

Tetley Bittermen.
Join'em.

Overseas Students forced home

TORY CUTBACK TAKES EFFECT

Huge increases in Overseas Students' Tuition Fees have meant that a number of foreign students have returned home, unable to meet the 33% increase in the cost of continuing their courses. At the same time, a 6% cut in the total intake of students has been forecast.

HARDSHIP

At Park Lane College several overseas students, mainly from Iran and Malaysia, have already gone home.

However, the college is allowing students in "severe hardship" to pay their fees by instalments. But as the President of Park Lane, Nigel Fisher says, "The reduction in the number of Overseas students threatens the existence of many courses and doesn't, as the Govern-

by the News Staff

ment says, increase the number of places available for British students. They are totally destroying the education system we have had to fight for."

The University Union Council decided on June 18th that a Fees Strike should be instigated, a decision which prompted the University to issue a statement warning that students can only register when they have paid their fees in full. But Union Deputy President Dick Quibell has said that the University will ensure that no student has to leave, because "they'll look silly if they do, the publicity would not look good. They'll have egg on their faces." The Fees Strike could result in £250,000 being withheld from the University.

The Union has asked the University to extend the Hardship Fund

which provides financial help for students in need, particularly those from overseas, and to make it available to freshers.

A national conference at London University Union will discuss the problem on Sunday. Leeds University delegates are Dick Quibell, Union Treasurer Len Siskind, and the Overseas Student Committee Secretary Kar Man Yee. At a local level, students at Park Lane have voted to fight all increases and to campaign for the total abolition of fees.

DIVIDED

Student Union leaders are divided on one implication of the increases. Dick Quibell said that they would mean that only "no-so-well qualified students from the very wealthiest families" will be able to take up their places. From the Polytechnic, Deputy President Mike Waterfall said "I don't think Britain is providing an education for working class people from developing countries at the moment."

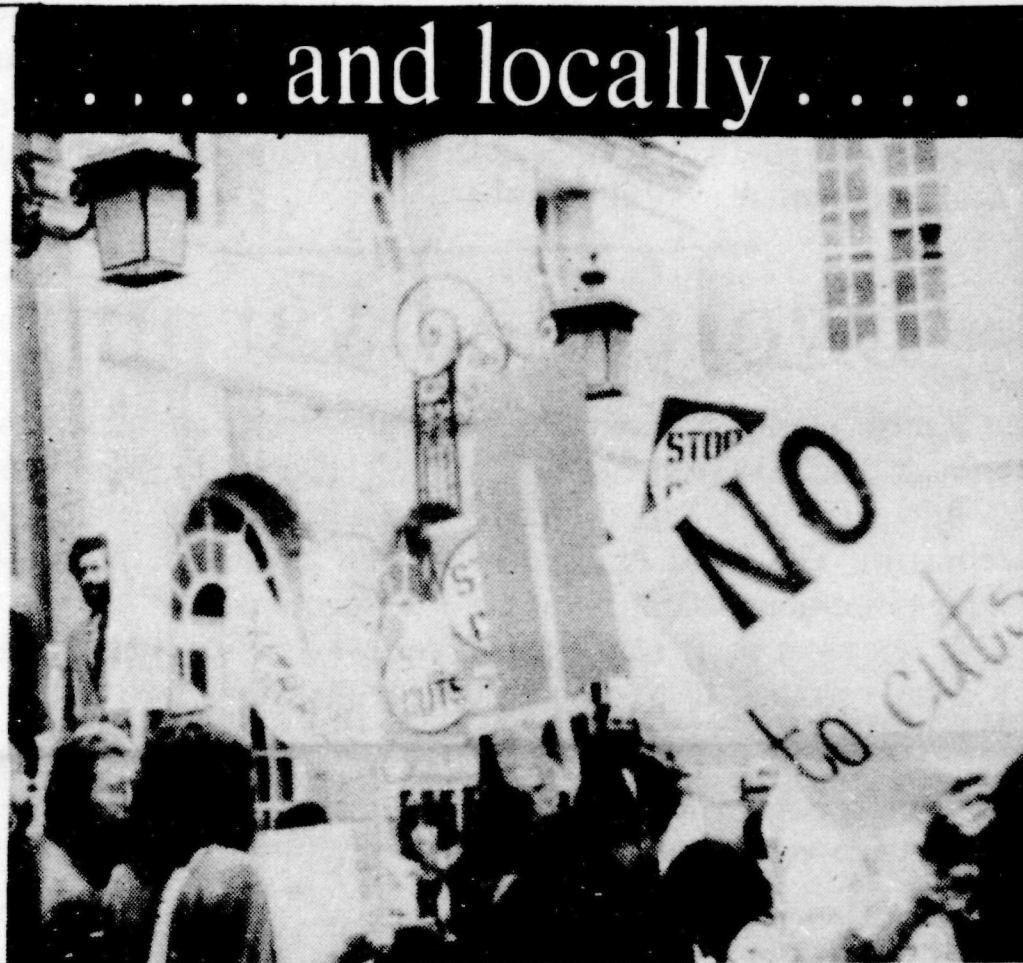
At the same time as the Fees rises were announced, the Chairman of the University Grants Committee sent a letter to all Universities warning them that they should be prepared for a reduction in the number of places available for students next session. The letter used the figure of 94% of the 1979 intake.

STATEMENT

A reduction of 6% would mean that the University Union would be deprived of £30,000 of fee derived income — an amount equivalent to the largest surplus that the Union has ever made.

A further statement is expected within the next fortnight from the University Grants Committee which will give advice on admissions targets for the next four years.

The two moves form part of the Government's policy of heavy Public Expenditure cuts, announced in the Budget last June. The Tories have added an increase of 21% to the Overseas students fees, in addition to a 9% increase announced by the Labour government in February.



Pickets outside the Civic Hall

No result from NALGO blacking

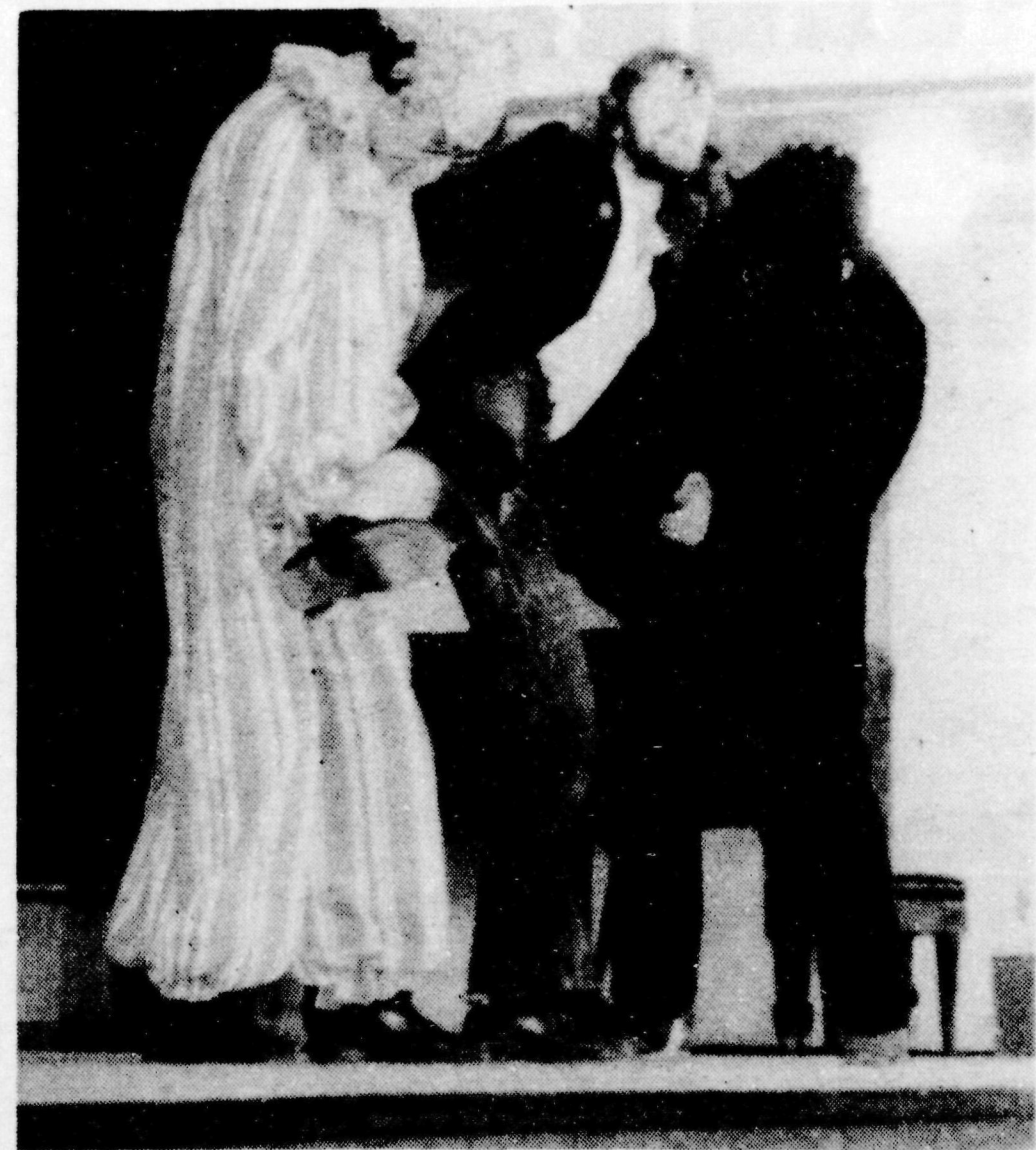
Fears that University students would not receive of strike grants promptly because of their action by the clerical union NALGO, have proved groundless.

Registration of students was slowed down but otherwise was proceeding as normal. About 50% of staff in the Fee's Office belong to NALGO and the figure is even less in the Registry.

The union are in dispute with the University over a wages claim. They initially asked for a rise of 25%, though this has now been lowered to 14%.

Included in the union's action was a one day strike last Monday. Margaret Mason the NALGO branch secretary at the University says a settlement in the next week or two is 'unlikely'.

The University Union has made arrangements with the banks to provide students with commission free loans should the industrial action become more effective.



The Rag Committee provided some light relief for students involved in Freshers Conference. During a talk in the Great Hall on subjects such as the South African Scholarship Fund, Student Health and Sports opportunities, the Rag Chairman was molested and finally escorted from the room by two of his colleagues, pictured above.

**Sports facilities
in Leeds —
are there enough?**
Pages 6 and 7

**Ripper precautions
— warning
to women students**
Page 3

**Alien and
The China Syndrome
reviewed**
Page 8

**Preview page
Page 11
Warbeck**
Page 5

LEEDS STUDENT

5th October 1979

Muddled motion

The motions calling for a fees strike by overseas students may just be counter-productive.

If the strike was to gain total support, £¼ million would be withheld from the University. The University has already opposed the rapid increase in overseas students fees. The decision to raise the fees was not made by the University, the Polytechnic or any other college. It has been forced through by a Government committed to the pruning of Public Expenditure.

The Unions should therefore be co-operating with the College authorities, and presenting a united front of opposition. The people who need to be convinced are the Tory MPs who created the policy. It is hard to see how withholding large sums of money from College authorities is going to achieve much in that direction.

Perhaps the most pressing problem, though, is that such a strike would place the students involved in an untenable position. Without paying their fees, or giving an undertaking to do so, no-one can become a student. In other words, the motions call for overseas students to jeopardise their courses to fight a battle directed against the wrong opponent.

No student can be happy at the prospect facing education as a whole at the moment. However, the student movement must not allow itself to be carried along by a wave of hysterical opposition, so that it finds itself embarking on a campaign against the interests of its members.

Two-edged warning

Recent warnings about the Yorkshire Ripper are all sensible enough, and everyone would be well advised to heed them.

But there is a danger inherent in the attitudes that they represent. The word "irresponsible" has already been used to refer to women walking home alone at night.

It is only a short step from there to a position where many will hold women to be responsible for their own rape and even murder.

Fracas over face-lift



Work is progressing on the landscaping outside the University's new Block 19. Criticism of the scene came from NALGO who organised a picket in August objecting to the use of £130,000 on campus cosmetics when there was a shortage of funds for their wage claim. The money was taken from an Accumulated Reserves Fund and represented left-over cash from previous projects, saved up for a campus face-lift.

Union Deputy President Dick Quibell, commenting on the University decision, explained that the money was a lump sum, and would have been of limited use in supporting any Recurrent Funding such as the NALGO wage claim, overseas students fees or the Nursery.

Ransacked house greets student

Between £600 and £700 worth of goods were stolen from a student house in Blenheim Avenue last month.

Third year Polytechnic student Alison Crosby returned from her holiday in America last week to find her house in a state of devastation. Not only were valuable items including two stereos, jewellery, lamps, hairdryers, a sewing machine, records and a toaster missing, but all the wardrobes and drawers had been emptied onto the floor and spattered with ink, make-up, soap powder and even urine. In addition lampshades had been burnt, posters and correspondence torn up and a pay-phone in the hall had been robbed.

This was the worst of a spate of burglaries in September which left many students without their most treasured possessions. The Hyde Park area, where most University

and Polytechnic students normally live, appears to have been the worst hit. Some flats and houses left vacant for only a few days have been broken-into and ransacked.

Inspector Spencer of Millgarth Street Police Station said that there had been twelve similar burglaries in the Hyde Park area in the last fortnight. In most cases thieves gained entry by forcing a door.

A youth of 16 has been charged and remanded in custody in connection with the Blenheim Avenue break-in, and investigations into the other burglaries are proceeding.

by John Armstrong

Hall works: Poly gigs homeless

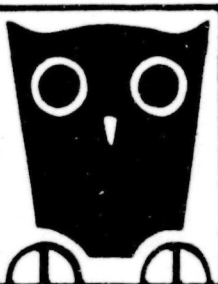
Reconstruction work in the Assembly Hall at the Polytechnic City Site has ruined the Union's usually varied entertainments programme.

The refectory can only hold small crowds, and so 'big name' attractions have to be staged elsewhere. There has already been one concert in the University refectory, and one Judie Tzuke, at the Grand. Later in the term, Caravan will also be playing at the Grand.

The Union has never made vast profits from the concerts, and so the loss of the revenue will not affect students too much.

The Assembly Hall will be out of action for the whole year, and so the Poly's promotions will have to be unusually low-key.

LEEDS PLAYHOUSE



Calverley Street
— 42111

Tonight and Tomorrow at 7.30 p.m. last two nights of
ABIGAIL'S PARTY
Devised by Mike Leigh

Improvised then scripted it is a black comedy that exposes modern lifestyles brilliantly and wickedly. "funny, practically continuously from beginning to end by that peculiar chemistry Mike Leigh brings to all his plays....Beverley the archetypal bitch and the awful Angela both sparkingly revolting"...L.O.P.

"very funny. It can indeed be compared to the best of Ayckbourn"...Y. Post.

"splendid comment on our times"...E. Post.

11th October — 3rd November at 7.30 p.m. (Tues. 8 p.m.) no Sunday or Monday perfs.
PRIVATES ON PARADE

Award winning comedy by Peter Nichols. "The first good new British musical in years." Punch.

Camp and bawdy adventures of a British Forces Concert Party in Malaya, 1948. Songs and sketches — Marlene Dietrich in drag! The British Tommy as he really was "Achingly funny"...Evening Std.

8th November — 3rd December our 100th production — Shakespeare's **HENRY V**

Reductions for students — Book also at Union Travel Office

6th December — 10th January Our Christmas Show — David Wood's
THE GINGERBREAD MAN

FILM THEATRE

Tonight at 11.15 p.m. — Visconti's **LUDWIG** (AA)

Helmuth Berger as the mad monarch who holds no real power in his kingdom and unable to cope with this and his homosexual tendencies becomes a recluse in his fairytale palaces. Returns by demand of its devotees following last season's success.

Next Friday 12 Oct at 11.15 p.m. **SOME LIKE IT HOT** (A)

Tony Curtis in an all girls band with Marilyn Munroe

MUSIC

Late Night Friday Jazz

19th October — IAN CARR'S NUCLEUS

16th November — BOBBY WELLIN'S SEXTET

22nd February — ELTON DEAN'S NINESENSE

14th March — LONDON JAZZ COMPOSERS' ORCHESTRA

Saturday 13 October at 11.15 p.m. — Sunday 13th October at 7.30 p.m.
DEATH IN VENICE (AA)

All seats 90p

Saturday 20 October 11.15 — 7 a.m. Sunday **ALL NIGHT BOGART**
with TO HAVE AND HAVE NOT, MURDER INCORPORATED, THE ROARING
TWENTIES, and THE BIG SLEEP
seats bookable at £2.50

18th November — 3 p.m. — VIENNESE OPERETTA.

25th November — 3 p.m. — FITZWILLIAM STRING QUARTET with Alan Hacker
Mozart Clarinet Quintets

7th December — LANDINI CONSORT — Early Christmas music played on authentic instruments.

28th January — NASH ENSEMBLE — Ravel and Boulez.

24th February — LINDSAY STRING QUARTET with Alan Hacker
Weber and Brahms Clarinet Quartets.

STUDENT PRICES — £1.00 and 50p

Balls are back with a bounce

Whatever happened to that vital date in every student's social calendar, the Union Ball?

University Union Ents Secretary, Dayve Lunnun has decided to revive the event, and is organising a new kind of Union Ball "on a completely fun basis".

He says:

"I think it's pointless to resurrect some of the old aspects — I don't think we could get people to come along in bow ties — but it's going to be a fun evening."

Mr. Lunnun's extravaganza is planned for Saturday, 3rd November. Lene Lovich, Jane Aire, and The Meteors will all be appearing in the Refectory, introduced by Anne Nightingale. Other attractions include Lew Lewis and The Revillos in the Riley Smith Hall and a disco in the Tartan Bar.

Mr. Lunnun is also hoping to provide a magician and "one of those huge inflatable bouncy things to jump on." Tickets will cost £2.20 and should be available in a fortnight.

West Yorkshire Police stepped up their hunt for the 'Yorkshire Ripper' this week with the launching of a campaign they call 'Operation Stop Press.'

The campaign is aimed at informing the public and persuading them to come forward if they have any information. A reward of £30,000 has been offered. The campaign, the first of its kind in police history, includes displays on hoardings, radio broadcasts of the so-called 'Ripper tape', and massive reproduction of the 'Ripper's' handwriting in local and national newspapers. The advertisements carry the slogan "Help us put away the Ripper."

Attack

The operation coincides with advice to female students from the University and the Polytechnic.

At the University freshers conference, the Vice-Chancellor, Lord Boyle, issued a warning that no female should walk alone at night whatever the circumstances and has posted notices to this effect throughout the University. The police have advised that women should be walked home to the door and not just to the end of the road, as the killer is just as likely to

Report by:
Cat Smith

attack outside a house as in a lonely area.

Students also listened to the tape recording which police believe to be the voice of the man who is terrorising women all over the north of England, and whose violent mutilation is "so sick that it has turned the stomachs of even the most hardened Police Officers." Inspector Spencer, the Police Press Officer, urged anyone who recognised the voice to contact the police.

It is only a month since sociology student Barbara Leach was murdered in the University area of Bradford, and many first year women students are apprehensive about moving to Leeds. Wendy Jones from Knutsford near Manchester, said that the possibility of danger didn't occur to her when she applied to University, as the story was out of the headlines then. Another new student, Eileen Fogarty from Burton-on-Trent, said that the warnings and tape had made her anxious, and that she certainly wouldn't walk alone in the future.

The sabbatical officers at the Polytechnic are providing mini-

buses for the freshers conference as usual, but are extending the service for an extra week. A similar service is being provided by the University Union to transport students to Halls after the City bus service has finished, but this will only last to the end of the week. Deputy President of the Union, Dick Quibell, says that it would be too expensive to continue these buses throughout the year.

Warning

The Union has also approached the Accommodation Office with the request that the lighting around Bodington, Tetley and Weetwood Halls should be improved. The Office is investigating this possibility. Warnings and advice will be given over the P.A. system to University concert audiences, and arrangements are being made to ensure that Ents stewards get home safely after gigs. Women's Halls, such as Oxley and Weetwood, are urging their members to phone if they get stuck away from home so that other people can meet them and accompany them back. The presidents of these Halls stress that this service is available at any time of night, however late it is.



• Above: Inspector Spencer addresses a freshers' meeting.

Picture by A. Kershaw

• Below: Lord Boyle's warning to women students.

Wine Soc disbanded after investigation

by Amanda Salmon

A University Union society has been disbanded because of alleged irregularities in its accounts. Officials of the society may face further action.

The Fine Wine Appreciation Society which was set up last year, was given an initial grant of £120. But a Union executive meeting voted to disband the society when it failed to produce adequate accounts of how the grant was used. The possibility of taking further action is to be discussed at the first Union Council meeting of term.

Union Treasurer Len Siskind

claims in his report of the situation that "the society has not been run within the constitution." Alleged irregularities include:

- failure to collect any membership fees. Membership is said to have been granted by a few members of the committee, who gave out cards free of charge.
- there is no record of any society revenue and no receipts of money spent are available.
- the society's treasurer, Graham Morrison, is said to have written a society cheque, made payable to himself, to re-imburse personal money spent on the annual dinner.

- the society spent three quarters of its budget on two events, one of which was attended by only ten people.

Mr. Siskind said: "It is not the Union's job to subsidise such a society's antics. In a year when the Cultural Affairs Budget is tight, we cannot afford such wastage." Officials of the Fine Wine Appreciation Society were not available for comment.

As a result of the investigation, Mr Siskind has produced a guideline for as to how society accounts should be kept.

WARNING

I have been advised by the West Yorkshire Metropolitan Police to warn all women students that, until the person responsible for recent murders is brought to justice, they should under no circumstances be out alone after dark.

I most urgently request the co-operation of all students at the present time.

Boyle of Haverthwaite

Vice-Chancellor

September, 1979

Office travels

The University Travel Office has begun a new service for Further Education colleges. A travel office representative will be visiting the colleges during the lunch hour to sell Railcards and International Identity cards, and to help students with their travel problems.

At present the service is experimental and so far only operates at Park Lane and Trinity and All Saints Colleges, though there are plans to expand if there is sufficient demand.

Next week there will be a stall at Park Lane on Tuesday and Thursday in the shop between 12.00 and 1.30, and in the coffee bar at T.A.S.C. on Friday at the same time. In future weeks these arrangements may be subject to change according to the availability of staff and space.

Unfortunately it will not be possible for the office to sell tickets away from the central bureau, but arrangements may be made for tickets to be brought on the next visit or collected from the University.

Eric Toft, the Travel Office Manager, explained that the service had been suggested by LANUS. "Students not at the University tend to think that the office is for University students only and are a bit shy to come in. Both Park Lane and T.A.S.C. have been very keen and if it goes well we will expand. The larger the clientele the better the rates we can get — so everybody should benefit."

The Travel Office have also started another new service this term. From now on, tickets for the Grand Theatre will be available from the Union Office.

CITY LIMITS

CLOTH CRAFT

BOUTIQUE

77 Raglan Road, Leeds 2

- Peruvian and Bolivian jumpers, cardigans, ponchos in 100% Alpaca wool
- Icelandic and Norwegian jumpers, cardigans and wool.
- Quilted plain and flowered jackets
- Beautiful hand embroidered dresses from Afghanistan, Turkey, Greece and India.
- Jewellery and leather goods

BE SMART FOR 25p



VISIT YOUR LAUNDERETTE IN
THE BASEMENT ADJACENT TO
LLOYDS BANK

7 WASHERS

4 DRYERS

IRONING FACILITIES & SOAP
AVAILABLE

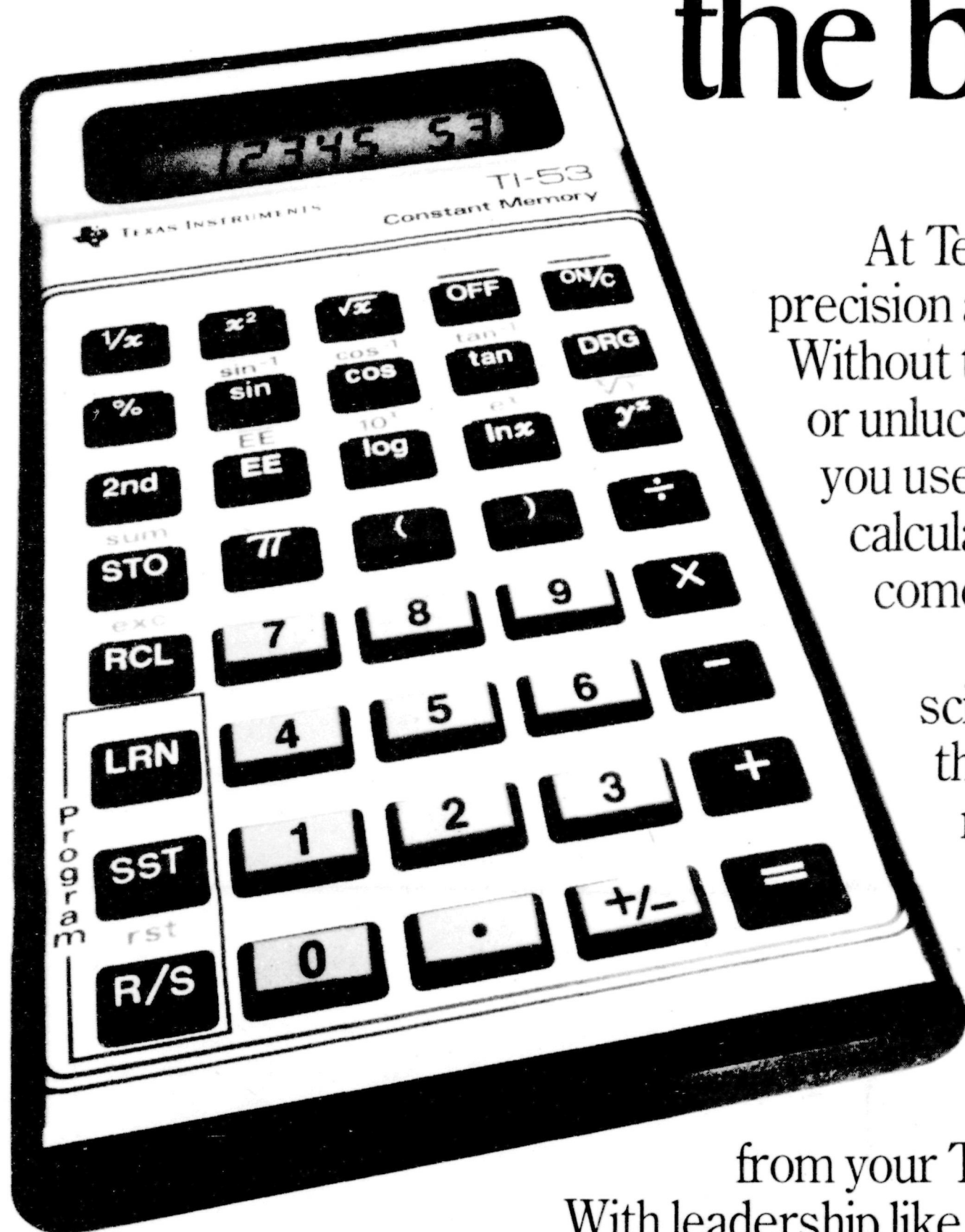
LAUNDERETTE PROVIDED BY

BRIGHOUSE LEISUREMATIC'S LTD.

BY COURTESY OF LEEDS UNIVERSITY

& LEEDS UNIVERSITY UNION

We wish any student who doesn't own a Texas Instruments calculator the best of luck.



At Texas Instruments we know how important precision and accuracy are to the student.

Without them results become just lucky – or unlucky guesses. But when you use one of our student calculators, luck doesn't come into it at all.

Choose a student scientific calculator from the new TI Slimline LCD range that includes the new TI-53.....

A powerful scientific calculator with 32 step programmability that comes complete with an applications book that ensures you get the very best from your TI-53, no matter what your subject.

With leadership like this, is it really worth risking your money on other calculator brands, or in fact just leaving your future to luck?

We think not.

TI-53

Our powerful new scientific calculator with 32 step programmability and constant memory that protects your programmes and data even when the calculator is switched off. Offered with the TI-53 is a new Applications Library of 84 pre-written programmes in maths, finance, natural sciences and areas of general interest. Calculator-book combination £29.95, including VAT.

TI-50

A 60-function scientific with statistics and factorials. This unique machine retains data in its two memories as well as statistical registers even when switched off. £27.50, including VAT.

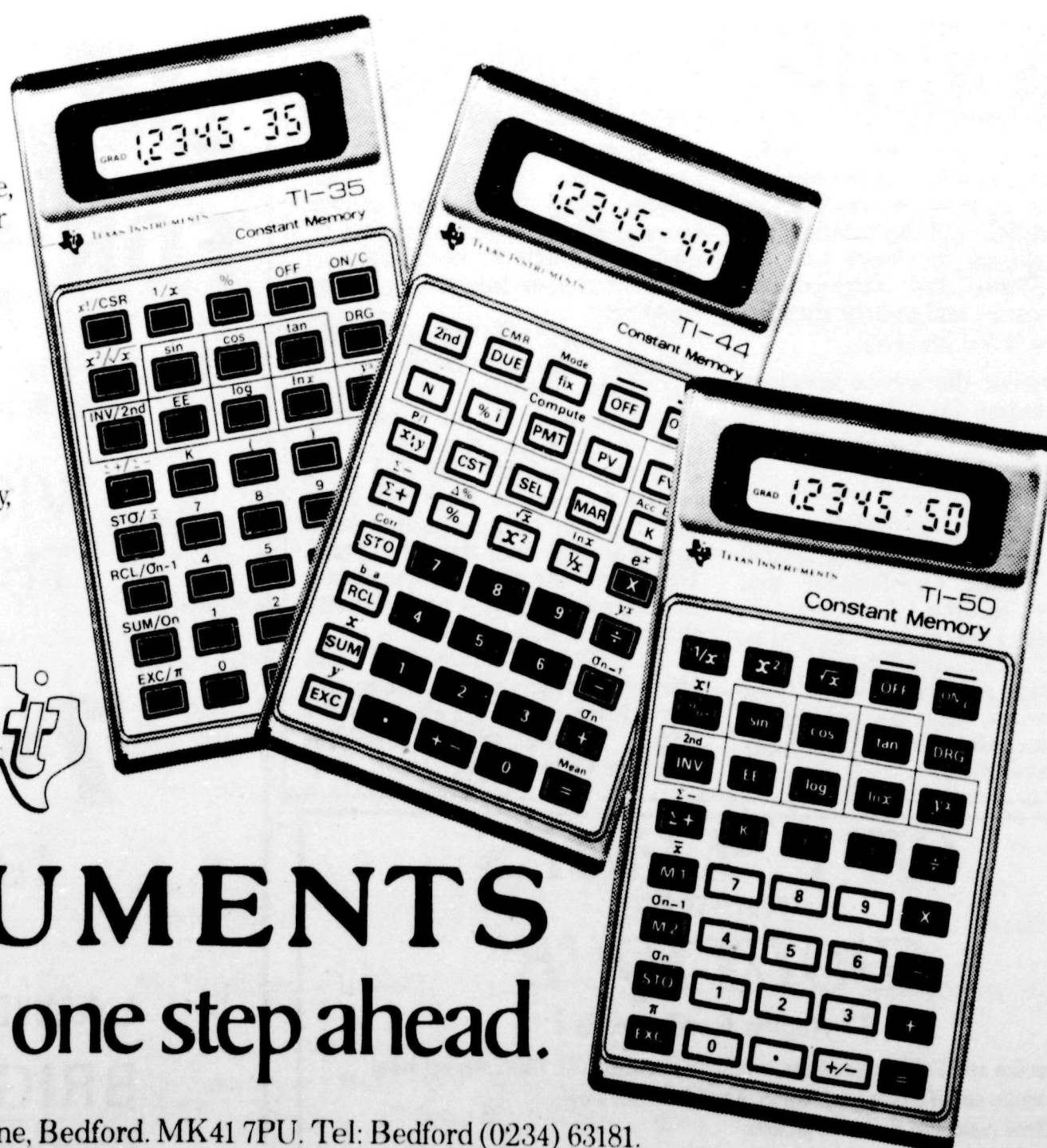
TI-44

For students and professionals alike, a pre-programmed financial calculator with powerful statistics and constant memory. Ideal for time/money, profit margin and forecasting problems encountered in business studies. £36.95, including VAT.

TI-35

Our economical new 54-function scientific with single constant memory, statistics and factorials. £19.95, including VAT.

All new TILCD scientifics feature the time-saving algebraic operating system (A.O.S.) which allows you to enter problems as they're usually written, from left to right. LCD scientifics and the TI-44 also have battery life of more than 1,000 hours with automatic switch-off and battery level indicator.



TEXAS INSTRUMENTS

Always one step ahead.

Texas Instruments Limited, European Consumer Division, Manton Lane, Bedford. MK41 7PU. Tel: Bedford (0234) 63181.

Warbeck

Returning from my summer frolic, it was a considerable surprise to bump straight into portly hack Alex Palacios. Alex, who is definitely not a Conservative, by the way, is just beginning his second session as University Union House Secretary. As this is an unpaid job, there must be powerful reasons for staying on to do the job for another year. I suspect that Jose, as he is called, has deluded himself that he is in a position of power, which he regards as the ultimate aphrodisiac, his record last year was not a stunning success in this direction.

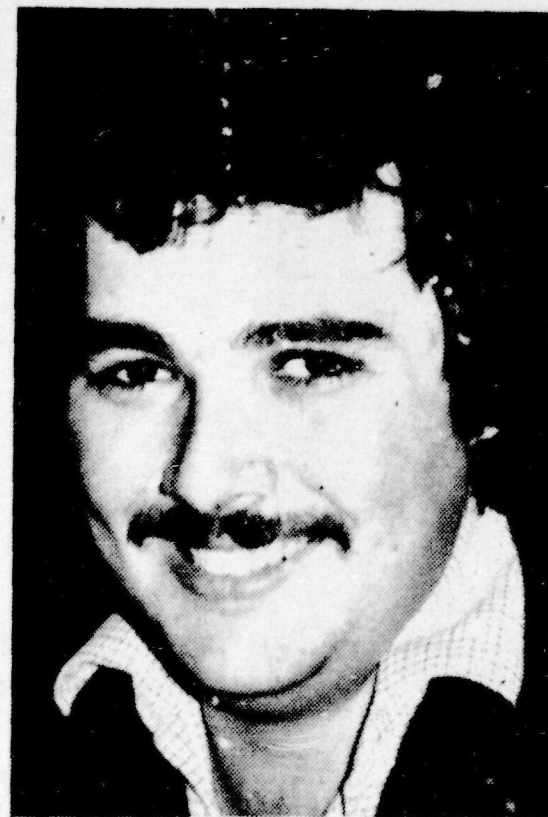
In order to increase the chances of his odious advances not being dismissed with the customary "Down boy", Alex is going along to the menopausal matron's lifesaver, the "Weightwatchers" society. Alex says that it is the embarrassment that helps him to shed his puppy-

fat. The poor lamb is so afraid of being shown up by the battle-axes that frequent this sacrilegious haunt, that he doesn't eat for days beforehand. The thought of a reasonably proportioned Palacios should be more frightening to any young ladies, than the Ripper, himself.

An intriguing rumour has reached me about the University Vice Chancellor, Lord "Eddie-baby" Boyle. He has revealed a secret passion. When he is sure that prying eyes are far away, he climbs into an old pair of elephantine grey flannelled trousers, and, would you believe, actually jogs around his garden - the mind boggles. Rumour has it that publicity conscious hack is planning to set Lord Boyle up for an embarrassing challenge during Rag week. Apparently the hack, who is himself not possessed of the most sylph-like body, is going to challenge Eddie-



Portrait of a secret jogger



Alex Palacios

baby to a sponsored slimming competition. The whole thing is cheap and sordid, and this infatuation with skinny people is disgusting.

However, if any one can furnish me with a picture of the Vice Chancellor indulging himself in this masochistic activity, I should be suitably grateful.

The more wide awake of you will have noticed some changes inside the University Union, perhaps you will think them an improvement. What really annoys me is that it has taken so long. Those poor people trying to give away their records at Parnassus have suffered the most. It took thirteen weeks to knock down one door, and move one waifer thin wall a distance of two feet.

Apparently this has meant a loss of business in the order of £1000 in turnover. Now, I don't really want to point fingers, but as ex-President Charlie "Emperor" Brobby was in overall charge at the time that the work was started, his claim to have revolutionised the commercial side of the Union may just have more significance than he is aware. In any case, the whole operation should have been completed by August to give everyone a chance to settle into their new accommodation, as it is, chaos rules.

Mainliner Crossword

Win Two free tickets to the Hyde Park.

CLUES ACROSS

1, 10; Construct illicit relationship by moonlight (4,1,3,2,3) 8; Get superintendent to love metrical line, expressing hesitation. (8) 9; An importuner, perhaps, in relaxed attitude (2,4) 10; see 1 across. 12; Inhabitant of cheap lodgings has one set of documents (7) 13; General (upper class) in Cambridgeshire town - unfeignedly (9) 14; "And beauty and length of days and night and..." (Swinburne) (5,2,3,5) 18; Shout interjection, taking directions before a tract of water (6,3) 21; Intent step just after the hour (3,4) 22; Spread myself at father's note (4,5) 24; He is unable or able to sing (6) 25; Record gold awards for shoulders (8) 26; Keep quiet about 6 down with a little tin (8).

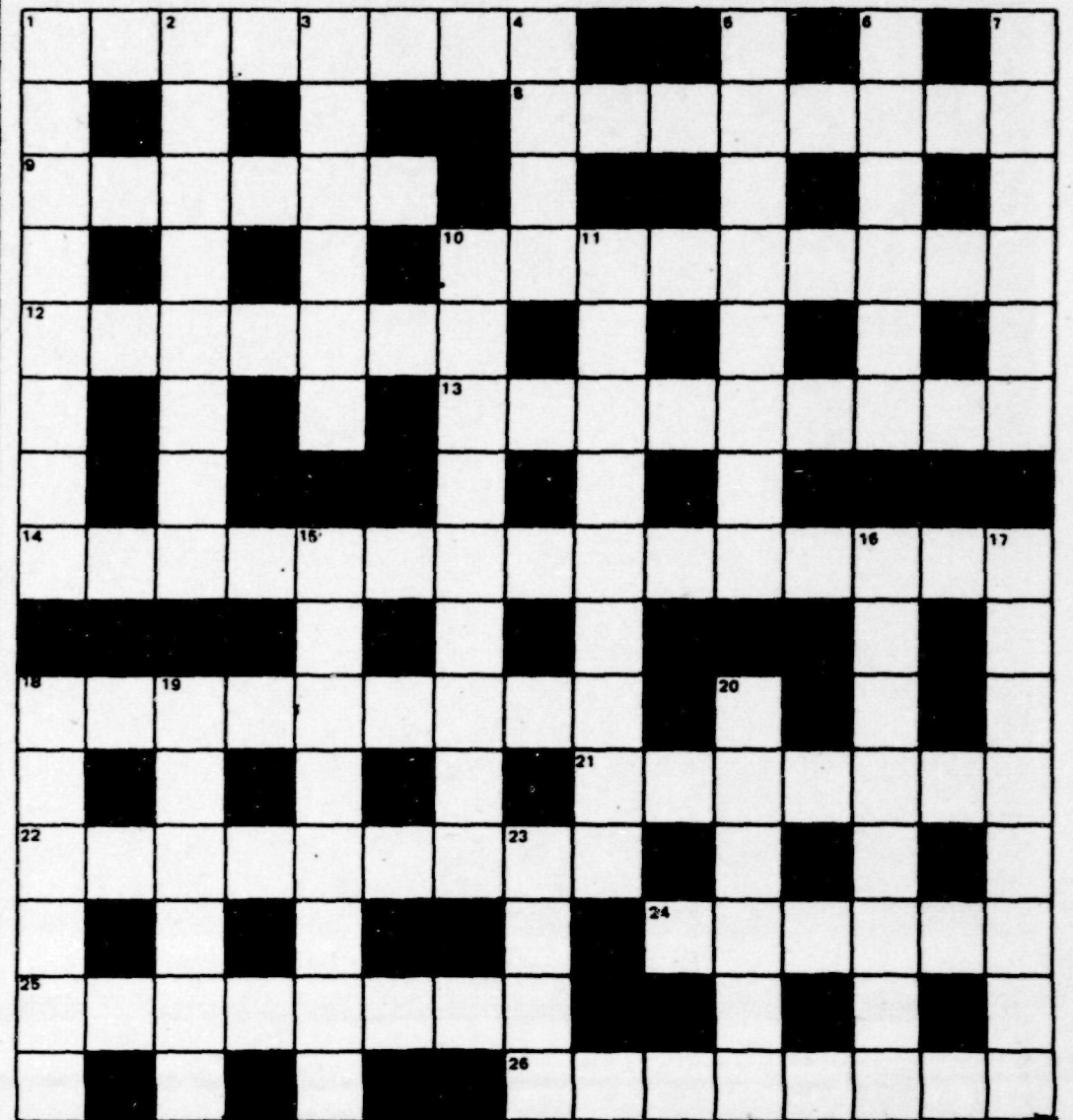
CLUES DOWN

1; Ignoble Russian comes up before society and makes a circuitous journey (8) 2; Hold on to Oriental drink as a memento (8) 3; Sailors lie back and come down the rope (6) 4; Settlement to

tow away? (4) 5; Proverbially untrustworthy gunner going up before blokes get one - a name (8) 6; Decide to lose a large number, but gain fifty point one (6) 10; Musicians who make the strains go (9) 11; Extremely poor quality tithe, perhaps (5,4) 15; Professional member puts on weight many years after - but punctually (8) 16; Huge absurd action after the concert (8) 17; Stood feebly and summed up about the Queen (8) 18; Lament fruit on the sea overseas (6) 19; Scotsman in small US city has society climbers (6) 20; Bring into conflict as every northern guy and gal expects initially (6) 23; Throw up to ship (4).

First correct entry wins two tickets to the HYDE PARK CINEMA.

Send completed crosswords to, LEEDS STUDENT, 155 WOODHOUSE LANE, LEEDS 2, or bring them to our office in the University Union.



Austicksforbooks

situated to serve . . .

Officially
Accredited
Booksellers
to
University
of
Leeds

UNIVERSITY BOOKSHOP

FIVE DEPARTMENTS - Containing the Largest Stock of Books in the North of England ALL YOUR TEXT BOOKS AS WELL AS A WIDE RANGE OF BACKGROUND READING Any book not in stock ordered immediately by Special Order Service from Publisher - Our expert staff always available to advise you on your book requirements.

21 BLENHEIM TERRACE, WOODHOUSE LANE
(Opposite Lloyds Bank)

OPENING HOURS:
WEEKDAYS 8.30 to 5.30
SATURDAYS 8.30 to 12.30

MEDICAL BOOKSHOP

MEDICAL AND DENTAL STUDENTS BE SURE YOU GET THE LATEST EDITIONS OF YOUR RECOMMENDED TEXT BOOKS AT OUR SPECIALIST MEDICAL BRANCH. CLOSE BY THE SCHOOLS OF MEDICINE AND DENTISTRY

57 GREAT GEORGE STREET
(Opposite Leeds General Infirmary)

WEEKDAYS 9.00 to 5.30
SATURDAYS 9.00 to 1.00

STUDENT STATIONERS LTD.

For Your - NOTE BOOKS - LOOSE LEAF FILES - REFILL PADS - DRAWING PAPER - GRAPH PAPER - DRAWING INSTRUMENTS - GENERAL AND SOCIAL STATIONERY - GREETING CARDS - NEWSPAPERS - MAGAZINES - JOURNALS - MAPS - STREET PLANS - LEISURE READING PAPERBACKS

172-174 WOODHOUSE LANE
(Opposite The Parkinson Building)

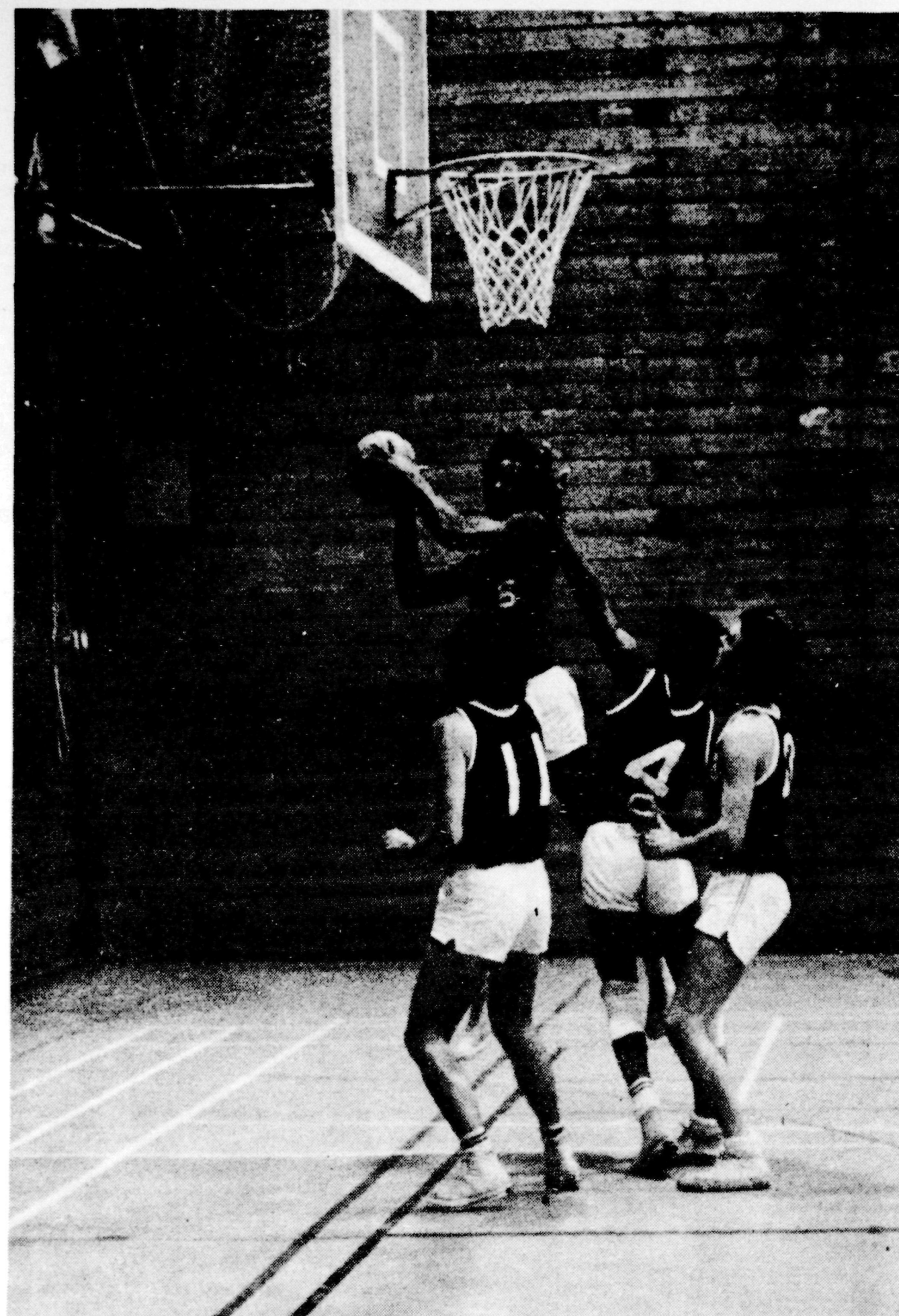
WEEKDAYS 8.30 to 5.30
SATURDAYS 8.30 to 12.30

POLYTECHNIC BOOKSHOP

FOR ALL THE REQUIRED READING AT LEEDS POLYTECHNIC AND ALL COLLEGES OF FURTHER EDUCATION IN THE CITY PLUS EDUCATIONAL STATIONERY. ALSO LARGE MAP CENTRE AND BUSINESS STUDIES DEPARTMENT.
H.M. Stationery Office Official Agency

25 COOKRIDGE STREET
(Opposite St. Anne's Cathedral)

OPEN SIX FULL DAYS
MONDAY to SATURDAY
9.00 to 5.45



Indoor sports: a chronic shortage of space

LEVI'S **LEE**
QUALITY JEANS
AT DISCOUNT PRICES
WRANGLER **FALMER**
FREEWAY JEAN COMPANY



QUALITY HEAVYWEIGHT PRE-SHRUNK DENIM
JEANS AT DISCOUNT PRICES

LEVI'S	18" Straight Leg	Leg	36"	} £13.95
	22" Flare	Leg	34" & 36"	
WRANGLER	18" Straight Leg	Leg	36"	} £14.95
LEE	17" Straight Leg	Leg	34" & 36"	
	23" Flare	Leg	36"	
FALMER	18" Straight Leg	Leg	36"	
	26" "A" Line	Leg	34" & 36"	

All available in waist sizes: 26, 27, 28, 29, 30, 31, 32, 34, 36
 Also Levi's 22" flare available in waist sizes: 38, 40, 42

GET TOGETHER AND SAVE!! - SAVE 50p PER PAIR
 WHEN YOU ORDER 5 PAIRS OR MORE, MAKING THE PRICE AS LITTLE
 AS £13.45 WITH NO POST AND PACKING TO PAY

DON'T HESITATE TO WRITE FOR OUR FULL BROCHURE CONTAINING
 DETAILS OF MORE STYLES AND SIZES, IN BOTH DENIM AND CORD

HOW TO ORDER

(Please state alternative choice where possible)

MAKE	STYLE	QUANTITY	WAIST	LEG

Total Remittance Due

Name

Address

Introductory Offer to Students
of

45p OFF PER PAIR

IF YOU SEND THIS VOUCHER
TOGETHER WITH YOUR ORDER
FORM BEFORE OCTOBER 31st 1979

FREEWAY JEAN COMPANY

Offers a money back guarantee
if not completely satisfied

Please make cheques/PO's payable to:-

FREEWAY JEAN COMPANY

Freeway House, 26 Camdale View
 Ridgeway, Sheffield S12 3XQ

Sport - Leeds is not the place to come

University students will have noticed that the campus is getting a face-lift at the moment. The operation is costing £160,000. At the same time, a plan to build a new sports complex is in jeopardy because of lack of funds. In these times of public spending cuts, it is interesting to see the University's priorities.

Sports facilities in Leeds are pathetically inadequate for the 60,000 students in the city. The University and the Polytechnic are well off compared with Colleges of Further Education. Park Lane College, which has more than 7,000 students is a typical case.

"We actually have a table tennis set" said Nigel Fisher, president of the Union, "as well as one football and a pump". The football isn't really a lot of use as Park Lane don't have anywhere to play.

In an effort to provide some sport for some members of the College, Nigel Fisher organises a swimming session each week, but as only twelve people can have one hour in the pool this is hardly adequate. There is also some fencing for a very few full-time students.

On the advice of the City Council, the Union contacted the Sports Centres in the area to see if any arrangement could be made to give people a chance to be active. However, this raises two problems. The centres do not accept weekly bookings, each session has to be booked six days in advance. This means that it is impossible to organise societies round a fixed time and place. It also costs money to hire these facilities. "We can afford so much, but no more" explained Mr. Fisher. So even if the Sports Centres were available Park Lane could not take advantage of them. Another disadvantage of the Sports Centres is that they are spread all over Leeds, and as well as being inconvenient, this raises the overall cost of sport for the student.

Sharing

The problem for Park Lane is vast. The college is desperate for space anyway, simply to teach in, let alone to play in, and with money being so tight it is doubtful whether the situation will ever materially improve. The Polytechnic and the University have facilities which Park Lane would love to share, but they themselves are stretched beyond the limit, and there is no opportunity for any sharing policy. It seems, then as if Park Lane students will have to fight for the twelve swimming places each week.

The Poly is in no better shape. It has a tremendous tradition of sporting excellence in all fields, from canoeing to women's hockey. It is the City Site that is worst off. George Bulman, the Sports Organiser, explains why:

"When the City Site was opened there was no provision for indoor facilities. For an institution this size, it is a nonsense not to have a sports hall and at least one squash court. We're just desperate for indoor facilities".

On the surface, Beckett Park has a great deal to offer the sportsman. There are four gyms, a weight training room, a swimming pool, a covered training area, and an all-weather pitch, in addition to all the rugby, soccer and hockey pitches, and an athletics track. These are in constant use, and says George Bulman, no longer adequate.

"Our biggest problem is that Beckett Park

Sports facilities in Leeds are poor in some Colleges, and non-existent in others.
Hugh Bateson finds out why so little has been done.

was built for one and a half thousand students. It is now being asked to meet the demands of four or five times that number of full time students, and up to ten thousand part time."

The Polytechnic has absolutely no facilities for that most popular of student games, squash. To meet some of the massive demand, the Poly hires courts wherever it can find them. At the moment, it uses three areas, Chapel Allerton, Leeds Grammar School and Queens Hall. The cost of providing what is really no more than minimal service is well over £1000 per annum.

Squash courts could provide some sort of income for the Poly. Instead, the Poly students pass their money over to some external company, and more money disappears.

With facilities being so oversubscribed, there must be a temptation to reserve those that do exist for those who are good at the particular sport, and who will represent their college. The Poly resists such a temptation. For beginners at squash, there are novice courses run at Chapel Allerton, and George Bulman said that no facility is used simply for teams.

It can be argued that the Poly is better off than it makes out. Superficially, sport appears to be a major part of life there.

However, there are no facilities near the City Site, and those that there are at Beckett Park are hopelessly oversubscribed. The result all too often is that people go through their time at the Poly without having the opportunity to try out a new activity, when perhaps they will never have the chance again.

The problem is much the same at the University. A 'League Table' of British Universities' sports facilities was carried out in 1976/7. Leeds came top of the table so far as participation in Intra-mural leagues was concerned, and was fifth in the number of grass pitches provided. The position in the table for indoor facilities is the most significant, thirty-second out of thirty six. It is sad to see that a University with such a large number of people wanting to participate in sport should provide such a pitiful service for those people interested in indoor sports.

At least there are some squash courts for University students, but even these point out the inadequate provision made by the University in this field. The money from the charges does not go to the University. When they were built, not enough money could be found to pay for them, and so a loan was taken. It is to pay off the interest on this loan that all the fifty pence fees go, not into

any fund to further improve facilities.

A recent questionnaire of forty two Universities revealed the real situation. It was found that the average number of courts owned and administered by each University was six. Leeds has three, and one of them is not full size. It was also found that the average cost to a student for one game was 17.64p. The charge in Leeds is 50p. If the University is short of money, it must be wondered if the campus facelift is the best way to spend £160,000. Jack Hartley, who is the chairman of the University Committee on Facilities for Athletics and Physical Education, defended the squash court situation by saying:

"If you think in terms of private clubs, then 50p is not expensive", and he explained the squash courts were loan-financed because "the University felt that they couldn't give that amount of money".

The problem is that any decision to spend the sort of money needed (a new squash court costs in the region of £35,000) has to be made by Senate, a body of 150 heads of department, professors, and all of seven students. Jack Hartley pointed out gently, that this body is "probably not fully aware" of the situation.

In an economic shortage it is not likely that such a group is going to give money to a pastime such as sport. It is partly because of this that the University is at present negotiating with private enterprise to finance a new sports complex.

The Playhouse company rent the shell of one half of the Sportshall from the University, and their lease expires next August, at which time the University has an obligation to buy the fittings at cost price.

Plan

The plan basically is that the remaining half of the sportshall and the land with it, including the squash courts, be sold to the Playhouse, and all the indoor facilities be centered in a new complex built on some land provided by the council behind Blenheim Terrace.

However, the recent economic crisis has meant that no funds are now available. "Everyone bitterly regrets the delay" said the Bursar, Ray Head, "and the matter is being dealt with at the highest level, by the Vice Chancellor".

At the moment the University is in the middle of negotiations designed to raise at least half of the £1¼ million needed from private enterprise, and in two or three years there might be some improvement.

Hockey and Tennis players might be a little more fortunate though. The University is planning to sell one acre at the corner of the Bodington playing fields, and the money will be used to build an all weather playing area near Oxley Hall, a facility which is badly needed. This does nothing to alleviate the on-campus problem though.

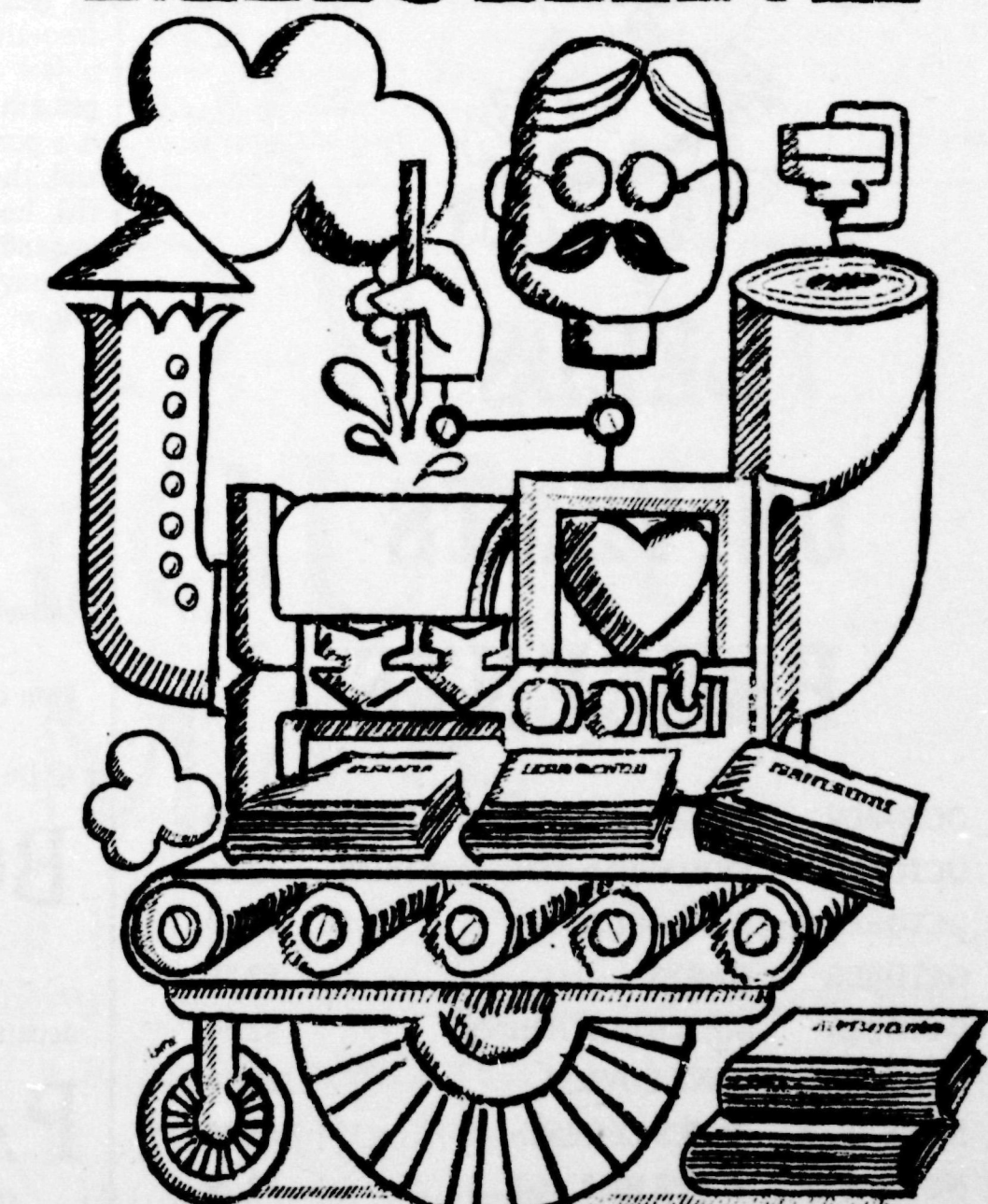
Indeed, if the University do not succeed in raising the required sum, there is no sign that any move can be made to increase the facilities.

Although both the University and the Polytechnic have facilities, in some ways they are in the same situation as the Colleges of Further Education. In each case there are large numbers of people wanting to play sport but being denied the opportunity. It is a problem without an easy solution as it is only money which can ease the situation at all.



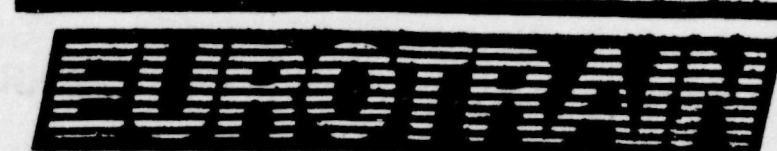
Outdoor Sports: Well used in Leeds

THE BOOK MACHINE



UNION BASEMENT
MON. - FRI. 9.30 - 5.00

New Science Department
 Now Open



Rail travel to destinations all over Europe for young people under 26

WE HAVE NEGOTIATED REDUCED RATES

WITH SWINNARD COACHES

FOR PRIVATE COACH HIRE.

AVAILABLE TO ALL STUDENT GROUPS

TELEPHONE: 448877 FOR DETAILS.

STUDENT TRAVEL OFFICES

UNIVERSITY UNION BUILDING
 MON. TO FRI. 9.00 - 4.30 p.m.

PARK LANE

TUE. & THURS. 12.00 - 1.30 p.m.

TRINITY & ALL SAINTS

FRI. 12.00 - 1.30 p.m.

BOOKS

Ayone for Cricket.
Diary of an Austrian Tour.
by Bob Taylor and David Gower.

Last winter's tour of Australia has now been responsible for six books, ranging from the standard cricket commentary of Christopher Martin-Jenkins to the tactical study presented by Mike Brearley. Of them all, this diary is the most interesting as it deals not so much with the business of winning cricket matches but with the effect of a strenuous three month period on two totally different characters.

Gower, the young star of a moderate batting line up, has a dry and detached view of the game, his first century against Australia he calls merely 'very satisfying'. Throughout the tour he appeared to be looking for ways to enjoy himself to the utmost, producing Hitler impersonations at public functions, and attempting to carry out the drinks in one game dressed as Father Christmas.

At the same time, he gives an excellent account of the extra-curricular activities that help while away the time, mostly drinking and sunbathing on topless beaches.

Bob Taylor on the other hand, seems to miss home life a great deal; a meal of roast beef and Yorkshire pudding immediately conjures up thoughts of his wife. He is also strangely insecure for a man at the top of his profession, worrying about his place in the side and for how long he can hold it.

A lot of book's attraction stems from the fact that the authors are not characters given to public outburst, so that it can be seen as the revelation of personality rather than of a constructed public image.

It is this atmosphere of genuineness both of enjoyment and of despair that raises the book above the level of the conventional sports book.

'The China Syndrome'.

Odeon.

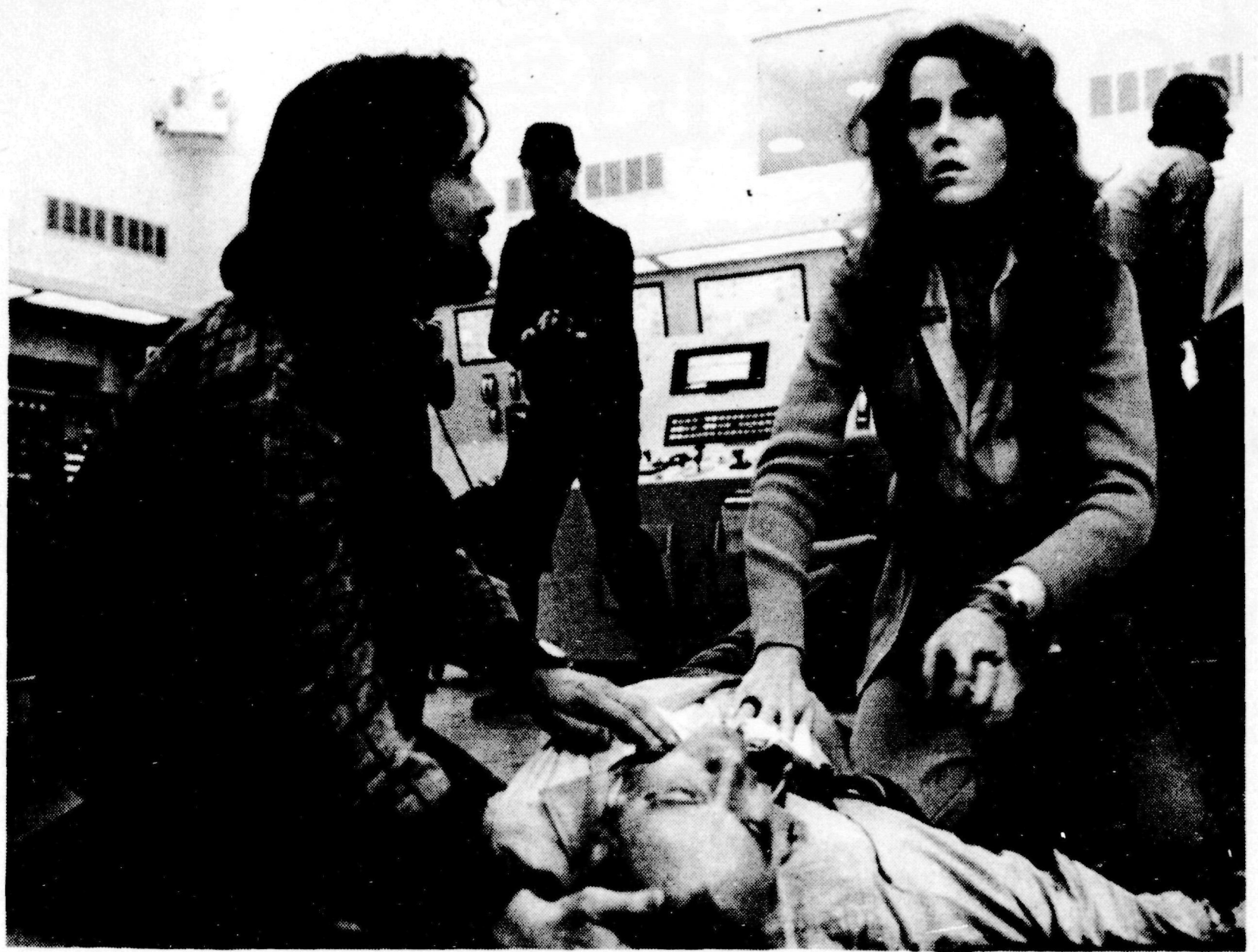
'The China Syndrome' was a surprise. The film is about a nuclear power station, and a television crew who try to expose the possible dangers of the new and expensive power source. Sounds dull.

But two factors make the film necessary and exciting viewing. Firstly, the film received an unexpected boost when a nuclear mishap in Harrisburg, Pennsylvania gave the whole world a horrible warning. The film succeeds in frightening us again. It does not, however, confuse us with a mass of scientific jargon, but, on the contrary, explains in fairly simple terms, that, although great care and expensive equipment provide a good safeguard, there is no guarantee against human fallibility. In other words, a nuclear power station is not 100%, 10 out of 10, absolutely and unconditionally safe.

The film's success is also due to the tight direction of James Bridges (of Cuckoo's Nest fame). He controls the film well, pacing it so that the tension leads to a gripping climax. He gives us a camera-eye view of the managers of the plant, who try to hush up an 'accident', and of the excited TV crew who witness it and become determined to bring the episode to the public's notice. Bridges said that this was a film which is true to life and not exaggerated - where 'lives are compromised by careers, and perceptions clouded by competition'.

Michael Douglas (son of Kirk) the man with the 'Midas Touch' who also helped to bring 'Cuckoo's Nest' to the screen and has now produced another winner also stars. He shakes off his 'Streets of

Chinese Consequences



Michael Douglas, Jack Lemmon and Jane Fonda in *The China Syndrome* (Odeon)

San Francisco' image and grows a beard to become a free spirited, socially conscious cameraman on no-one's payroll but his own. Jane Fonda (daughter of Henry - how lucky to have hereditary opportunity) plays the part of a young red-haired television reporter. Unfortunately, she is only a Lesley Judd type and wants to join the Sue Lawley grade and cover important events. The 'accident' at the plant provides the opportunity. Fonda and Douglas give adequate performances.

But Jack Lemmon is superb as the top engineer, at the plant, who, after the 'accident' becomes convinced of another danger which further jeopardizes the safety of the plant. Unfortunately, no-one believes him. The management go to great lengths to keep him away from the press, and finally he has to hi-jack the plant control-room to prevent the switch on of power. He is a proud man who loves his work, and the agony of his decision to risk his job to tell people of the impending danger is convincingly portrayed. America can boast only a few really talented actors, and

Jack Lemmon is one.

His performance and James Bridges, direction make the film compelling. The title has a relevance; the theory is that a rogue reactor left unchecked could bore a hole right through the earth from America and emerge in China. God help the Australian Syndrome.

Craig Howell.

For those who slept through the summer months, *Alien* is about a commercial starship - the *Nostromo* - which picks up an unwelcome guest when investigating an SOS call from a nearby planet. The rest of the film charts the grim progress of the crew as they try to track down and destroy the creature through the labyrinthine ship.

Admittedly, the plot is culled from the low budget American 'B feature' horror movies of the 50's and 60's. The skilful nature of the presentation though, steers clear of the characteristic humour and incompetence of the genre. The crew are neither fearless heroes nor zombies with pointed ears. Rather, they are shown as ordinary people

with a job to do, muttering scantly about pay and conditions.

The acting is rare melodramatic, and all the traditional horror-film stereotypes are kept firmly out of sight, not once does the heroine twist her ankle in panic stricken flight from the monster. The special effects, which are very special, also add to, rather than detract from the general atmosphere of credibility you don't see the strings on the spiders.

The film does, though, have its limitations, those to which all horror films are prone; the all-too-obvious lulling of the viewer into a false sense of security and the subsequent weakening of the inevitable shock. The explicit gore that Scott tries to shock with invite invites revulsion, but causes little tension.

I had expected something of the philosophy of 2001, but *Alien* is non-cerebral entertainment, and is not science-fiction. If your expectations are not too high, and your stomach not too queasy it's worth a visit.

Pete Dean.



LEEDS UNIVENTS PRESENTS

3	OCTOBER	BUZZCOCKS. (Freshers' Gig).	£2.20
5	OCTOBER	SIOUXSIE & THE RANSHEES	£2.25
13	OCTOBER	STRANGLERS	£2.50
20	OCTOBER	DARTS	£2.70
24	OCTOBER	SOUTHSIDE JOHNNY	£2.50
3	NOVEMBER	LENE LOVICH	£2.20
5	NOVEMBER	BLUES LEGEND	£1.75
10	NOVEMBER	STEVE HILLAGE	£2.20
14	NOVEMBER	RECORDS	£1.25
21	NOVEMBER	JOHN MARTYN	£1.75
28	NOVEMBER	GANG OF FOUR	£1.50
1	DECEMBER	MOTORHEAD	£2.00
8	DECEMBER	LINDISFARNE	£2.50
11	DECEMBER	POLICE	£2.50

Student Travel Office

University - Tel. 448877.

Park Lane.

Trinity and All Saints.

Mon to Fri. 9.00 - 4.30 p.m.

Tues. & Thurs. 12.00 - 1.30 pm.

Fri. 12.00 - 1.30pm.

FUN TRIPS. From Leeds.

BOULOGNE

Christmas Shopping Day Excursion.

departing 14th November.

£22.00

Price includes 1 litre of spirits and 200 cigarettes.

PARIS

Weekend 14th - 16th December.

£39.00 Price includes:-

Accommodation, Breakfast, Insurance, City Tour.

AMSTERDAM

Weekend 21st - 23rd March.

£44.00 - Price includes:

Accommodation, Tour of Vollandam, Insurance.

Now Available - RAIL CARDS - INTERNATIONAL CARDS - DISCOUNT CARDS.

Juke box Judie

Judie Tzuke

Cruising At The Grand

"The Cruise" came to Leeds last Sunday night, and the capacity audience that filled the Grand Theatre to see Judie Tzuke must agree that this cruise is "born to run and run and run".

On only the third concert of this long-long tour that takes her in to December, Judie was refreshingly taken aback by the enthusiastic reception that she received.

Supporting, Nigel Mazlyn Jones lulled the audience into a mid-60's, mushroom-induced haze. His set showed again the combination of one man, acoustic twelve-string guitar, and assorted electronic wizardry which made John Martyn famous. The difference is that Jones does it better.

With perceptive imagery, and some of those electronics to create

exquisite self-harmonies, he took the crowd "Travelling" and from "Ship to shore", provided, of course, that they were still awake. His second album "Sentinel and the Fools of the Finest Degree" is also interesting. Its professional finish belies the fact that it was produced in Jones' native Cornwall.

Dressed simply, in black, with long blonde hair attractively tousled, Judie Tzuke won everyone's affections with a set of fifteen songs co-penned with band guitarist Mike Paxman.

Varying from the spare and haunting "Ladies night" to the up-tempo semi-rock "Sportscar" — a new song — Judie's singing displayed a greater range than had been apparent from her last two singles. Outstanding songs of the set were "Welcome to the cruise", with the band sounding just like LA's

finest, and the first single, "(Stay with me) Till dawn". Her latest rendition "For you" lacked impact, relying on a pre-recorded backing track, suitable only for TOTP.

With two singles and an album in the lower twenties, Rocket records are obviously concerned that Judie Tzuke "breaks" by Christmas. However, from late October, she acts as support for Gallagher and Lyle (on the comeback trail) for the rest of the tour, and there she must shine in comparison.

J.V.

LIVE :
Judie Tzuke
Wilki Johnson
and
Agony Column

Wilko wasted on wash-out audience

Last Thursday the Poly took over the University Refectory as part of their Fresher's Week events, and put on a fine bill of talent to refresh any fresher.

Although they only used half the refec, the event was rather sparsely attended. For those who did make it though, the evening began well with a set from guest artists the Inmates. Second on the bill was Lew Lewis, who displayed an excellent repertoire of straight Rhythm and Blues, characterised by his fine harmonica playing, and the sheer energy of his set.

The main act, Wilko Johnson's Solid Senders came on to fairly rapturous applause and delivered a highly professional heavy R&B set. Personally I preferred Lew Lewis, though the rest of the audience seemed to be biased towards the main band. It's a shame this gig didn't attract more people, though this is probably due to it having been on too early in the term. Later gigs should be better attended.



MOR at the Grand

Agonized antics

Agony Column Polytechnic Refectory

Locked in its time warp, the Poly Disco is finally returning to fashion as heavy metal resurges.

The appearance of a power popping new wave outfit of local origins in the Poly Refectory managed to separate the audience into local well wishers and the Disco crowd.

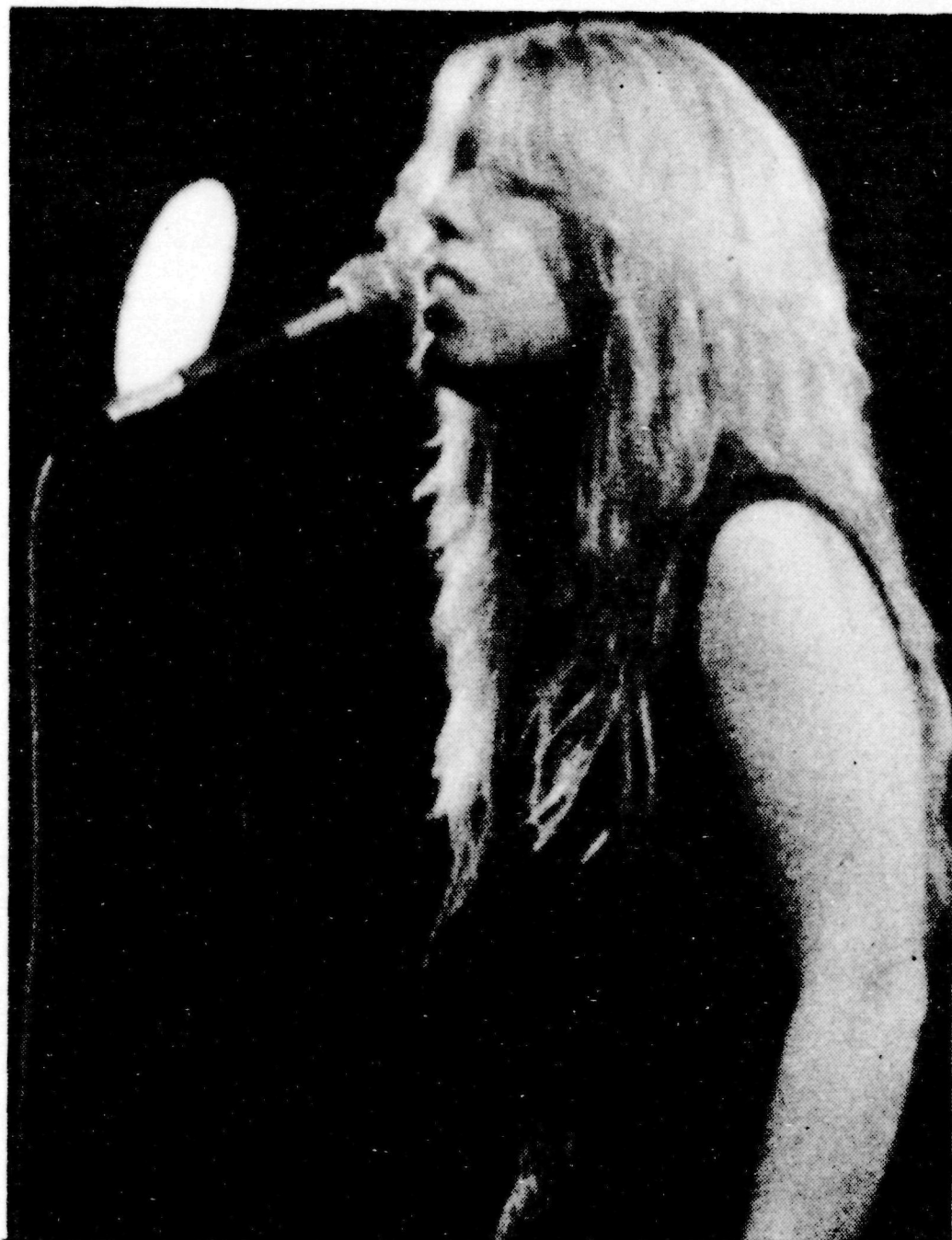
Never mind, Agony Column are still one of the best local outfits around. At their best, they perform short snappy pop tunes which are complemented by some very well-written lyrics. The potential shown by their first single *All Worked Out*, could be developed. However, I do wish they wouldn't over-complicate some of their songs. Sure, numbers like *Home Movies* do provide a relief from the beat, but the aim of

lulls in a set is to relax the audience and then build to a crescendo, but not bore them to death. They should plug their neat pop tunes and let their musical development take time. They certainly were too musically stretched on some of the songs.

The performance of their songs would be helped by allowing the singer to take more limelight, because he has the patter and charisma to shine through. To do this, the guitarist ought to concentrate on his choppy XTC-style guitar work which can be used to great effect on some numbers.

Having been a fan of those early XTC singles, my advice is to catch this band now. They could well be approaching their peak.

Steve Henderson



R n B at the University

Leeds Student Needs

NEWS REPORTERS; REVIEWERS;
FEATURE WRITERS; PHOTOGRAPHERS;
SPORTS WRITERS; GENERAL HELP.

If you are interested, come to a
meeting at 155, Woodhouse Lane
(next to the Fenton) on Sat 6th at 11.00 a.m.

LEARN TO DRIVE

JOHN LEE

COOKRIDGE SCHOOL OF MOTORING

D.O.E. Approved Instructor

Member of Institute of Advanced Motorists

Student Rate £4.50 per hour

Pick Up Service

Telephone LEEDS 612200
Ring Evenings and Weekends

OVERSEAS STUDENTS

CONTACT

ATLANTIS

FOR PACKING AND/OR SHIPPING OF YOUR EFFECTS

10% Discount for Students

39 OTLEY ROAD, LEEDS 6

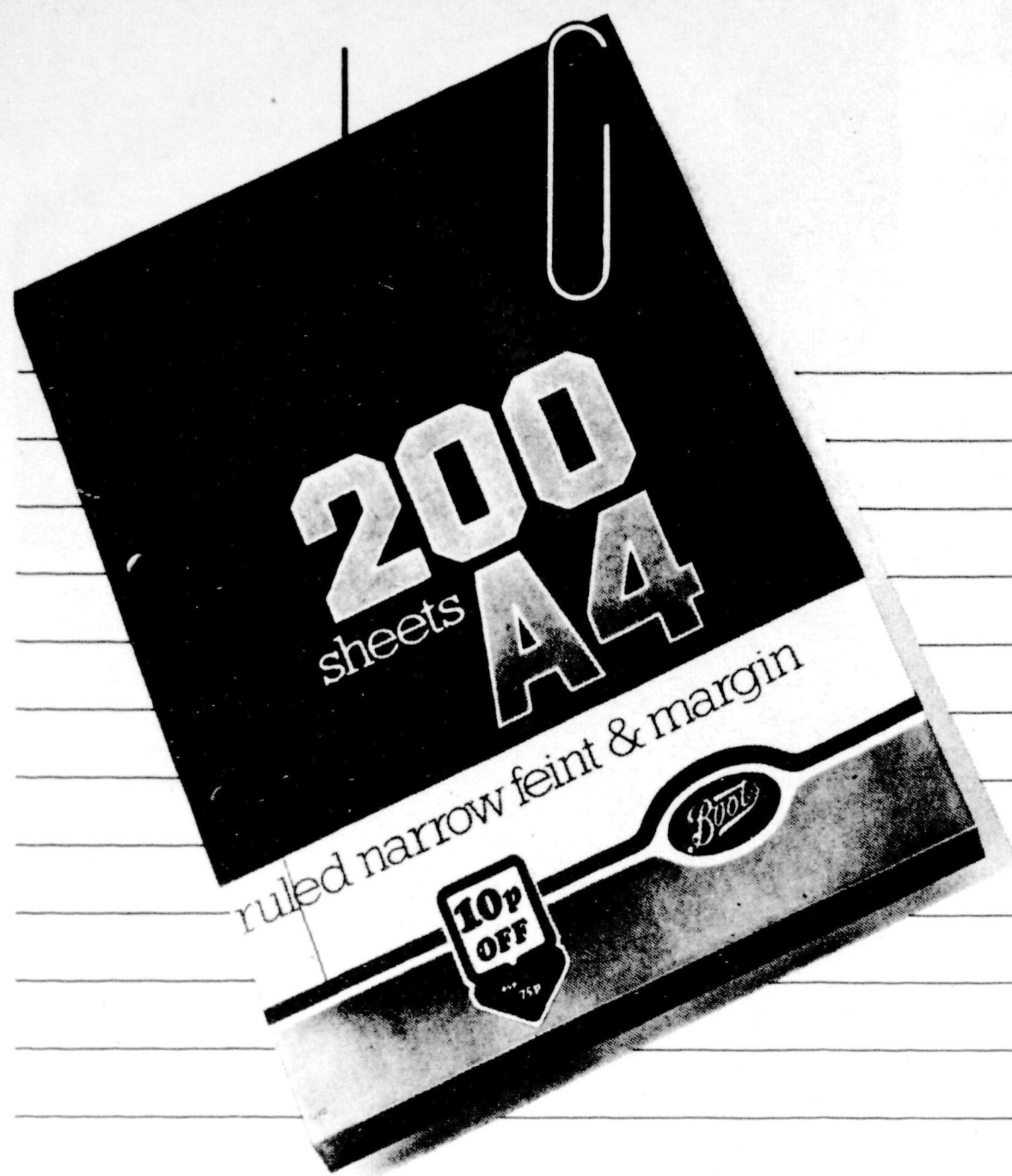
Telephone: 789191

'GO WEST YOUNG MAN*!'

Final Year and Postgraduate students ask your Heads of Department about Student Exchange Schemes with the Universities of California, Vanderbilt and Massachusetts or contact Mrs. D. Ince (Room 10.9b in the Physics/Administration Building — Telephone Extension 301) direct.

Latest date for applications 24th October 1979.

*Advice made in the unenlightened days before Women's Liberation. Please prefix the last word with "Wo—" where appropriate



THE BEST PAPER ON CAMPUS 200 PAGES. FOR ONLY 75p.*

The Boots A4 200 sheet pad is not only on most students shelves but it is also on every college Best Sellers list.

And at just 75p it's likely to stay number one.

But that's just part of the value you'll find at Boots on all equipment you need for college. Everything from calculators to typewriters pens to paper. It's all at Boots and it's all on sale now!

*Reduced from pre-V.A.T. increase normal price of 85p.
New normal price 91p.
Available, while specially marked packs last from
Boots Stationery Departments.
Also available: Feint, feint and margin,
narrow feint and margin, plain.



Make the most of your Boots.

PREVIEW PAGE

By now, you'll all be familiar with the dead end acoustics of the University Refectory. They may be pretty dire, but it is the biggest venue in Leeds, and with a good band playing, the atmosphere can overcome the sound.

The University Union has continued its policy of engaging big name bands and seem set on breaking their record of six sell out concerts last year.

Everyone must be familiar with the Strangers and Darts, who appear on the 13th and 20th October, (£2.50 & £2.70) but Southside Johnny will probably be fairly new to people no au fait with live bands. They started out as the proteges of Bruce Springsteen and Bob Seger, and play excellent American R. & B. Even if you're feeling jaded after the previous concerts, this is the one to see (Oct. 24th - £2.50).

Lene Lovich (Picture below) first came to Leeds with the Be Stiff tour last year. She returns on November 3rd (£2.50) to promote her new single "Bird Song", and her forthcoming album. She's got a new band, but the same distinctive voice. Support comes from Jane Aire and the Belvederes.

The "Blues Legend" (5th November, £1.75) may be legendary, but they are also pretty obscure. Efforts to find out more about them have resulted in the

tentative theory that they were formed by Paul Jones who used to play with Manfred Mann. Future issues will confirm or confound this theory.

Next up is ex-Gong Steve Hillage. Isn't it nice to know that some things carry on unchanged for ever....

The Records (14th Nov. £1.25) guested on the last Stiff tour, as well as backing Rachel Sweet. It should be a good gig - best, though loosely, defined as New Wave Pop.

John Martyn makes his annual trek to the University on Nov. 21st, pedalling electronic folk for the faithful few.

The Gang of Four (Nov. 28th £1.50) are our very own answer to the Mekons. They represent the acceptable face of Fine Art Political rock and have improved immensely since their original concerts in the Lipman building.

For the headbangers there's Motorhead. On December 1st (£2.00) and proving festive cheer there is the resurrected Lindisfarne on the 8th (£2.50). The last gig on December 11th by the Police will no doubt be the one to be seen at....but don't let that put you off, as they are one of the best bands around to-day.

So that's the new term, nothing much new, but a fairly catholic selection for the season.



HYDE PARK

One of the first things any fresher in Leeds should grasp is that the Hyde Park Picture House (corner of Brudenell Road and Queens Road) exists purely to enhance the quality of student life.

The Hyde Park is not only situated in the heart of the city's student ghetto, it is also the cheapest cinema in Leeds and show several different films a week, including two late night shows and a special Wednesday afternoon show.

This term, the Hyde Park is offering its usual wide programme.

Lovers of macho will find plenty to please them. A season of Clint Eastwood classics opened on Wednesday with A Fistful of Dollars. There are half a dozen more to see between now and the end of the month.

Those of you who go to the movies for light relief can look forward to two excellent Woody Allen double bills Annie Hall and



Sleeper, closely followed by Love and Death and Bananas. There are more laughs still in High Anxiety Mel Brook's tribute to Alfred Hitchcock which includes Brooks

- style remakes of famous scenes from Vertigo. The Birds and Psycho. Gene Wilder and the late Zero Mostel provide the hilarity in The Producers, a late night show on December 1st.

EVENTS

A varied programme of entertainment has once again been drawn up for the University Union this term by the events staff.

For the dancing enthusiast there is a regular Disco on Thursday nights, - with a bar extension till 11.30, and there will be something to tempt people from the pubs on most nights of the week till Christmas.

The term kicks off with a jazz concert tomorrow night in the Tartan Bar by the Morrissey Mullen Band and rock bands are booked for Wednesday 10th (Canned Rock) and Friday 12th (local up-and-comers City Limits).

Fellini's Casanova is being screened in the Rupert Beckett Theatre on Monday 15th for Donald Sutherland fans and you can see Omen in the Tartan Bar on

the 17th. There is a special treat on Friday the 19th when there is a chance to see the famous Mekons and Delta 5 in the Riley Smith, and the nearly famous Agony Column (see this page) and the Statics in the Tartan Bar. There will be a bar extension and the evening will be a must for anyone wanting to be in on the Leeds Bands' explosion.

Later on in the term there will be more bands including local heavies Deadringer, Mike Absalom (comedy folk) and Vienna, as well as Theatre and Cinema - including Day at the Races by the Marx Brothers.

Leeds Students will be keeping you up to date on all forthcoming gigs as well as reviewing the ones you missed so you can kid your friends you were there.

Incidentally the Union needs Stewards so anyone wanting free gigs in return for a few hours work should contact Andy Buchan the Cultural Affairs Secretary in the Union Executive Office.

Admirers of Roman Polanski can see two of his best films, the powerful Chinatown starring Jack Nicholson and Faye Dunaway and his version of Macbeth with Jon Finch and Francesca Annis.

English finalists interested in passing their Shakespeare paper might find Paul Schofield's portrayal of King Lear on November 28th inspiring.

Or if it's thrills rather than inspiration that you're after, the Hyde Park has a host of likely films on offer. If you can stomach the thought of dental torture, go along and see Dustin Hoffman suffer at the hands of Laurence Olivier in Marathon Man. Clint Eastwood is at risk on October 19th in an excellent thriller, Play Misty For Me. And a week later Barry Newman faces untold horrors in the film of Alistair MacLean's Fear Is The Key.

15-20% DISCOUNT ON ALL STOCK

A wide selection of
rock, jazz, blues, soul,
reggae, new wave,
classical and folk.

EMI Record tokens sold
and exchanged.

Personal orders accepted
ITS YOUR SHOP

Parnassus records



LEEDS UNIVERSITY UNION RECORDSHOP

DATELINE....

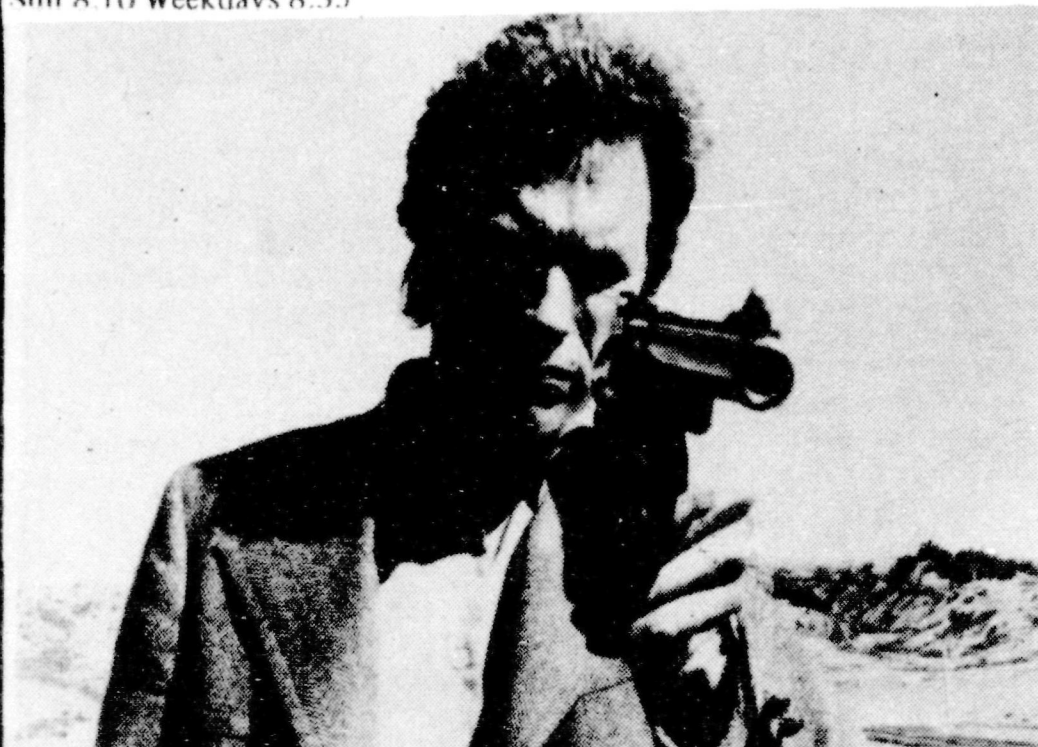
DATELINE....

DATELINE....

CINEMA

HYDE PARK

Tonight and tomorrow:
Revenge of the Pink Panther
 8.20 and Burt Reynolds in
Impasse 6.55
 Late Night Movie tonight:
Day Day Afternoon and cartoons
 11 p.m.
 Late Night Movie tomorrow:
 Clint Eastwood as
Dirty Harry and cartoons. 11pm.
 Sunday, for seven hilarious nights
 Donald Sutherland in
National Lampoons Animal House
 Sun 8.10 Weekdays 8.35



Clint Eastwood as Dirty Harry at the Hyde Park

and Woody Allen in
Play It Again Sam
 Sun. 6.30 Weekdays 6.55
 We advise you to get there early.
STUDENT'S SPECIAL. Wed. 2.30
 Clint Eastwood season:
The Good, The Bad and The Ugly
 plus cartoons.
 (Please note: **King Lear** will now
 be shown one night only Oct. 24th
 — not Nov. 28th as listed on the
 handbills.)

COTTAGE ROAD

Tonight and tomorrow:
 Anthony Franciosa and Carroll
 Baker in:
The World Is Full Of Married Men
 6.00, 8.35, LCP 7.45
 Status Quo at the Wembley at 8.00
 Late Show Tonight: 10.45pm
 Emerson, Lake and Palmer in
Pictures at an exhibition
 Sunday and all next week:
 Geraldine Page and Diane Keaton
 in Woody Allen's
Interiors
 plus Marilyn Monroe, Tony Curtis
 and Jack Lemmon in
Some Like it Hot.

LOUNGE

Tonight and tomorrow:
 Roger Moore as James Bond in

Moonraker
 5.40 and 8.15
 Next week:
 Same programme, same times

ODEON 1

Tonight and tomorrow:
 John Hurt in
Alien
 2.45, 5.30, 8.30
Stepping Out
 4.15, 7.10. Sun. 3.30, 7.00
 Next week same.

ODEON 2

Tonight and tomorrow:
Alien
 2.15, 5.00, 8.00

Magnum Force
 2.05, 6.15
 Sunday and next week:
Bloodline
 Weekdays 4.25, 8.30
 Sunday 4.00, 8.00
Wages of Fear
 2.25, 6.30
 Sunday 2.00, 6.00

ABC 3

Peter Falk and Peter Boyle
The Brink's Job
 Jeff Bridges and Jessica Lange
King Kong
 1.20, 6.00
 Sunday and all next week:
Blazing Saddles
 Weekdays 1.45, 5.15, 8.50
 Sun. 4.30, 8.05
Monty Python and the Holy Grail
 Weekdays 3.24, 7.00
 Sundays 2.40, 6.15

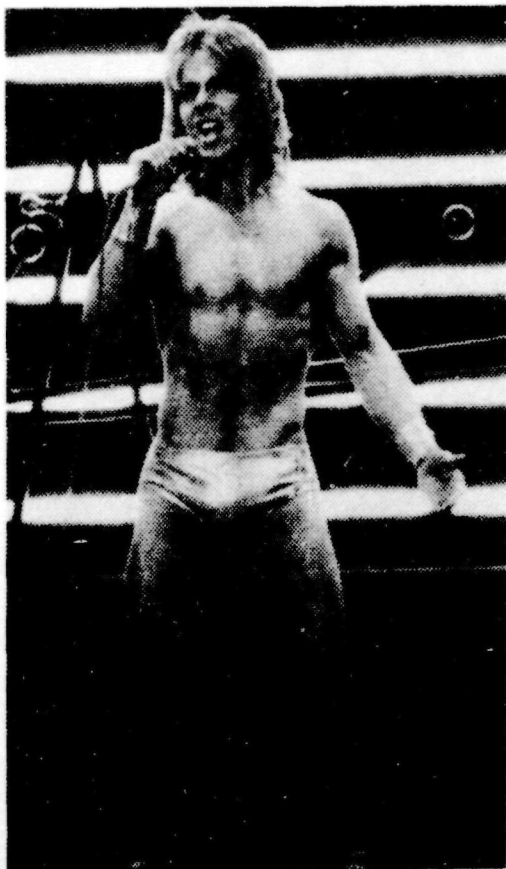
TOWER

Tonight and tomorrow:
 Clint Eastwood and Sondra Locke
 in
The Gauntlet
 4.00, 8.25
 Clint Eastwood in
The Outlaw Josey Wales
 1.35, 6.00
 Sunday and all next week:
Doctor Zhivago
 plus support film.
 Weekdays 3.10, 7.00
 Sunday 3.00, 6.35

PLAZA

Tonight and tomorrow:
Sexual Fantasies
 2.55, 6.00, 9.05
Finishing School
 1.10, 4.15, 7.25
 Sunday and all next week:
Queen of the Blues
 Weekdays: 1.45, 4.20, 6.50, 9.25
 Sunday: 3.50, 6.25, 8.55

Rocky Horror Show
at the Grand Theatre



Sylvia Kristel on board the
Concorde in Airport '80. The
Concorde at the ABC

Message Girls of Bangkok
 Weekdays: 2.55, 5.20, 8.00
 Sundays 6.55, 7.30

PLAYHOUSE
FILM THEATRE

Tonight:
 Helmut Berger, Trevor Howard,
 Romy Schneider in
Ludwig 11.15 p.m.

UNIVERSITY FILM SOC.
 Tuesday 9th 7.00 p.m. LT21
Ludwig
 Friday 12th Rupert Beckett
Rocky

POLYFLIX

Tonight City site
Whatever Happened to Aunt Alice?
 Wednesday October 10th at
 Beckett Park Site:
The Night Porter

Theatre
GRAND THEATRE

Tonight and tomorrow:
 Hilarious rock 'n' roll musical:
The Rocky Horror Show
 6.30 and 8.30
 Seats from £1.50 — £3.75
 Student reductions available
 Monday and all next week:
 Leeds Thespians Amateur Operatics
 present:
Hello Dolly
 Tickets for the Grand theatre are
 now available at the University
 Union Travel Office.

PLAYHOUSE

Tonight and tomorrow:
 Revised by Mike Leigh
Abigail's Party
 7.30 p.m.
 Starting 11th October

Peter Nichol's
Privates on Parade.

CIVIC THEATRE

Starting Tuesday October 9th
 Leeds Art Theatre presents:
Measure for Measure
 by William Shakespeare
 Tickets 70p, students 50p.

THEATRE GROUP

Saturday 6th: Riley Smith Hall
 World In Action Theatre Group
 presents
Blooming Connie
 plus Instant Theatre
 7.30 p.m. 30p.

October 10th, 11th, 12th Riley
 Smith Hall 50p.
 Political comedy by Dario Fo:
 "We can't pay? We won't pay."

Music

UNIVERSITY

tonight in the Refectory:
Siouxsie and the Banshees
 plus **The Cure**
 £2.25. Tickets from porters or from
 Travel Office and on the door.
 Doors open 8 p.m.

Saturday 6th October
 Jazz in the Tartan Bar
The Morrissey Mullen Band
 Tickets £1.50, students £1.00
 Doors open at 8.30 pm. Late bar
 until 11.30 p.m.

Wednesday 10th in Tartan Bar
Canned Rock
 plus a union support disco
 Bar extension to 11.30 p.m.

POLY

Saturday 6th Refectory
The Vye

Tuesday 9th Refectory
The Aiwoodley Jets.

PACKHORSE FOLK CLUB

(in Woodhouse Lane)
 Saturday 6th October at 8.30pm
 Tony Capstick

DISCOS

UNIVERSITY

Tonight in the Tartan Bar
 Extension to 11.30pm

Thursday in the Tartan Bar
Stompers Disco
 Extension to 11.30 p.m.

ALL ENTRIES FOR DATELINE
ARE FREE AND MUST BE
SUBMITTED BY THE WEDNES-
DAY BEFORE PUBLICATION.
CALL IN AT THE UNIVERSITY
UNION OFFICE (OPPOSITE THE
BAR) OR TELEPHONE Leeds
39071 ext. 58.

LEEDS UNIVERSITY UNION BARS

The following brews of real ale
 are available

Tetley, Timothy Taylor, Boddington and Scotch Bitters
 Timothy Taylor's Landlord and Ram Tam
 Tetley's Mild

ITS YOUR BAR FOR YOUR BENEFIT — USE IT!