

# LEEDS STUDENT

155 WOODHOUSE LANE  
LEEDS LS2 3ED Tel: (0532) 39071

## The chill sets in

Back to wartime conditions. What a comparison to have to draw. And what a disgraceful indignity for men and women who can place themselves among the nation's top academic resources to have to do their work wrapped in overcoats and mufflers.

For some time, Universities have suspected that they have become the forgotten sector of education. That suspicion must have turned to reality with a shudder this week — with staff and students alike experiencing the chilly tentacles of higher education's financial freeze.

"We'll shiver together for the sake of Britain", mutter senior administrators.

We say NO.

NO on behalf of the students working for exams which are crucial to their careers.

NO on behalf of clerks and secretaries who have to sit through barely legal temperatures because they cannot take their work home with them

And NO on behalf of the dons doing teaching and research work which is essential to the quality of British life.

## LETTERS TO THE EDITOR

### UNITED WE STAND

Sir,

I applaud your call for students and teachers to work together to fight cuts in education but I believe you are wrong to describe the present situation as one in which they are "cutting each others throats".

The Secretary of State for Education may try to suggest that the more money he provides to make students' grants adequate the less he will be able to provide to make university teachers salaries adequate and vice versa, but we should not fall into the trap of accepting such devious arguments.

There are positive signs that co-operation is possible. The Leeds University Union supported the AUT strike on May 6th and circulated an effective leaflet calling on students to support the Day of Action. The AUT has made many statements supporting students' demands for adequate grants; the latest of these appears in the current AUT bulletin.

Here in Leeds a Campaign Against Education Cuts was set up last December on the initiative of the AUT. It now has the support of all the following organizations as well: ASTMS, ATCDE, ATTI, CASE, HMA, NUS, NALGO, NUT and WEA. These organizations will naturally continue to mount their own campaigns to defend the immediate interests of their members, but their co-operation in a common campaign to defend all aspects of education is greatly to be welcomed.

Tension may occur between students and university teachers if the financial situation becomes even worse, but I believe these will be due to differences in the styles of action that the different groups find most natural to adopt, and not to any essential conflicts of interest. It is important that we should not let these different styles distract us into attacking each other when the real threat comes from outside.

Yours,

Alan Slomson.

School of Mathematics, The University, Leeds LS2 9TJ.

## COME COME MR. CLARKE

Sir,

I was interested to read in "Leeds Student" of May 2nd that Charles Clarke, President-elect of the NUS accuses Union Council of being intractable and out of touch with the student body!

The reason that we are not waging continuous militant campaigns against the authorities is not because as Mr Clarke suggests, we are so out of touch with the student body as to consider student life ideal.

Far from it. The reason is that many of those on U.C., myself included, question the results to be gained by such campaigns.

Even the grants campaign, almost the raison d'etre of NUS, has done nothing to eradicate the anomalies of the grants system and one suspects that the increase to £605 could have been obtained as easily by negotiation as by "militant campaigning." But then militant campaigning" protest has always had an ideological appeal to the left.

Students have no real weapons with which to vent their grievances — frequent resort to demonstrations is a sign of impotence rather than strength. There is more to be gained by discussion which may improve administrators awareness of student problems than by parading in the streets, which does alienate public opinion.

It is Charles Clarke and NUS which are out of touch with the student body. The majority of students are fed up with the militant line and support for left-wing organisations which continually emanates from NUS.

Were it not for the travel concession I am sure that many of its constituent organisations would cease to pay their affiliation fees.

If NUS Executive posts were elected by the student body as a whole (a ballot box in each union) instead of by conference delegates, then could Mr Clarke and the Broad Left say that they were in touch with the student body — if they were elected.

Yours,

John N. Harvey.

Leeds University Union.

### Warwick

The University of Warwick issued writs to five members of the Union executive, who had to appear before the High Court to justify activities during the occupation last week.

The High Court refused the repossession order, and the decision has been hailed as a victory by the Union.

Although exams may be threatened by the continuing occupation, students voted last week to carry on with the protest over rent increases at the university.

Nita Bowes, the Union secretary said: "The University's attempt to split the students by withholding grant cheques and threats to postpone examinations has simply not worked."

Colonel Hornby, the University development officer said that most students desperately wanted their grant cheques which the university claims cannot be paid while the students are in occupation. The students still say that the financial offices have been deliberately excluded from the sit-in.

### Lancaster

Controversy has broken out over the appointment of Professor Sylvia Shimmin to chair the committee which is to hear Lancaster students' appeals.

The Vice-Chancellor, Charles Carter, has told



## STUDENT WORLD

Professor Shimmin that she must stand down because she is a member of the University Senate.

The students have passed a resolution that her moittee would not be used as a legal argument by any of the appellants. The trouble arises because of a ruling by Lord Widgery and Lord Sachs in 1970 that students could claim that the committee was not properly constituted with the professor as chairman, and might challenge the correctness of its decisions.

However a student spokesman said: "We are very satisfied that Prof Shimmin would make a fair and unbiased chairman. Everyone is convinced of her integrity. Why look elsewhere?"

Compiled by Sue Beardsworth

Philistines reject authority and cultural pursuits and stay in hall because it is more convenient for work although they actually work less than the authoritarians who are: "vocationally oriented, responsible, hard-working, religious, middle-of the road politically (but to right of centre) and respectful of existing authority.

"Those who move out are classed as "individualists", the report states.

Other revelations of the report, which was designed to find out why some students stay in hall while others don't, were that social-scientists are more likely to be left-wing and that pure scientists are more likely to accept Christian concepts.

### Staffordshire

A design student at the North Staffs Poly has sent out leaflets to 60 leading companies advertising himself. He is offering his prospective bosses a chance to try out his talents on a ten day free trial offer with no strings attached.

The leaflet which he has designed contains a composite of photographs since his childhood, and an order form reading:

"Please send me without obligation one Alan Law for interview. If I am not convinced that I must have this superb Photographer/designer in my employ, I may return him within 10 days and owe nothing."

Since the original penalties were imposed, a petition signed by 400 staff has urged that they should not be reconsidered.

### Nottingham

A survey of students who had spent some time in halls of residence at Nottingham University has revealed that the students who stay in Hall for a second or third year are likely to be more hardworking than those who move out.

The report showed, amongst other things, that second year hall residents could be classed as either "philistines" or "authoritarians".

## personal column

Rock Bottom Disco — Phone 658320  
Spanish guitar — never used — unwanted gift — complete with case. Will sell for a mere £20, Baker L3 2/1 Lupton Flats.  
Rich, handsome, successful? You need the best disco around. ROCK BOTTOM — Phone 658320. For extra £2 we also play for poor, ugly failures.  
Roper says you can't have a perm until you've come three time. (Maybe it makes you rhair curl).  
Muck Agrics wish Mc Civ Eng (Mc Flat 6) best of luck in Much Finals  
Rock bottom disco — Phone 658320. It was sticking out when Sue went to the bar, wasn't it Mick  
GOOD LUCK!  
Sarah — the little drinker with the big kick.  
Reaching you is all that I need. Pete's moustache cleans like a fish (er).  
FOR SALE — Honda 90. MoT, Apply 13 Broomfield Road (off Chapel Lane), Leeds 6.

To the upper middle classes digging by degrees for £6,000.  
Wedding Bells in R38. More like Dumb-Bells. PAUL.  
MARRY ME MAGS. LOVE 71.  
I'd like to weave a tapestry for a very rare bird.  
MARTIN would like to thank all those who contributed to his column last week and has a special message for them. "PISS OFF RED NOSE!  
Where were you Saturday nite lan? NEE TREMBLER MOBILE DISCO for hall and society parties book now to avoid disappointment. RING 654606.  
AG TYKE HIKE. Knacker yourself for charity. Forms from Porters Office (or R38).  
await the dreaded sock 'n' hank with baited breath.  
Paddle your Brig in R38 — your time is up!  
Where were you at 2 am on Monday morning lan?  
Visit the world's largest collection of Milk Bottles at Ashe Grove (just off Woodhouse Moor) Curator: Jack Boot, esq.  
Two Birdstn the hand! Not even one in the bush! — HACK NEE COBBER.  
More cavalier than Royalist. Tumble-down Dick!  
Even the best laid plans fail Martin.

SPECIAL REDUCED RATES TO STUDENTS  
**CHARLIE GOULD LTD.**  
DRESSWEAR HIRE SERVICE  
4 Grand (Theatre) Arcade, Leeds 1  
DINNER SUITS **£2.00 PER DAY**  
(Including V.A.T.)  
All Sizes Available Accessories if Required

**GREECE**  
14 DAY VILLA HOLIDAY  
from £84  
**CANARY ISLANDS**  
14 DAY APARTMENT HOLIDAY  
from £87  
We are Specialists in Economy  
Travel to World Wide Destinations  
**TRAVELEADS LTD.**  
14 NEW STATION STREET  
LEEDS LS1 5DL  
Telephone: 33007 - 35799  
ALL OFFERS SUBJECT TO AVAILABILITY

A graduate offers speedy repairs to your TV set. Why pay for an estimate when I will advise you quite freely?  
CALL — TOM — 605375

Est 1900 HIGH-CLASS TAILORING Tel 456573  
for Ladies and Gentlemen  
**PHILIP DANTE**  
83 RAGLAN ROAD, WOODHOUSE LANE, LEEDS 2  
(2 doors from Packhorse Hotel)  
500 Cloths to choose from in worsted, mohairs, tweeds, etc.  
Individually Tailored in Modern or Conservative Styles  
Own Materials Made Up Alterations to all types of Garments

**ROVER TREK SAFARI ADVENTURE HOLIDAYS**  
Overland/Sea/Air  
To Spain, Greece, Morocco, France, Turkey, Austria, Germany, Switzerland.  
ALSO PRIVATE SAFARIS ANYWHERE  
SEND FOR YOUR FREE BROCHURE  
33 Grove House Road, Bolton Road, Bradford 2.

SELL AND BUY YOUR BOOKS AT  
**VOLUME ONE**  
BOOK SHOP  
Cash Paid for:  
PENGUINS, PELICANS, HISTORY, PHILOSOPHY, OCCULT, ART, POETRY, MYTHOLOGY, SCIENCE FICTION, POLITICS, OLD ILLUSTRATED AND ANTIQUARIAN BOOKS.  
WIDE SELECTION OF SECOND HAND BOOKS IN STOCK  
Open Monday to Saturday until 6.00 p.m.  
198 WOODHOUSE LANE, LEEDS 2

# Five hurt in Saturday night violence

Five people had to be taken to hospital after incidents at both the Alex Harvey hop and a Gay Lib disco last Saturday.

Three members of Gay Lib were injured, two of them seriously, during violence at their own disco in the Lipman building.

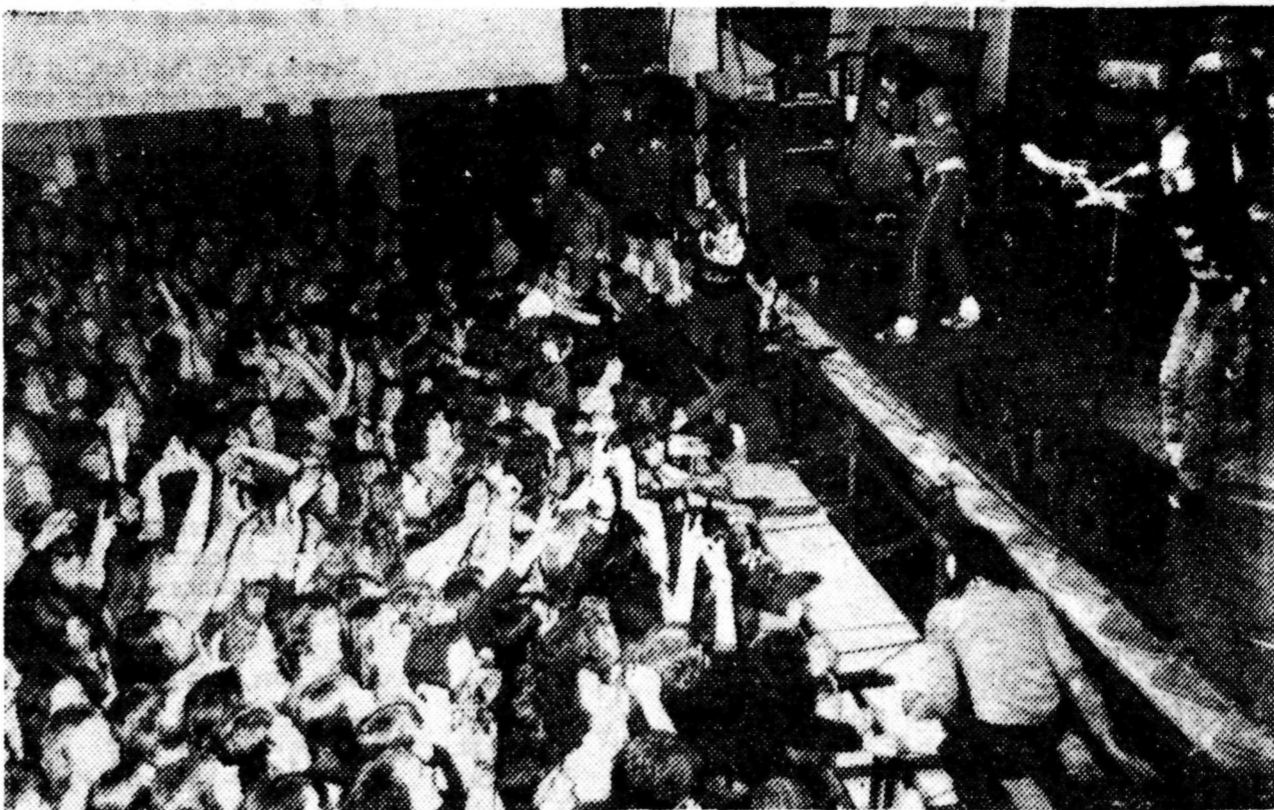
The two who suffered serious injuries were hit by flying glass after a brick was thrown through a window of the building. Both have been detained in hospital,

one after an operation to remove glass from his left eye. A hospital spokesman described the condition of both as "comfortable" earlier this week.

The brick-throwing incident happened minutes after two people were ejected from the disco. Later, a third member of Gay Lib was injured when he was attacked by two men as he left the building. He was later discharged from hospital after treatment.

Now, police are interviewing all the guests at the disco. They are particularly anxious to trace the two men who left shortly before the brick was thrown.

Both are described as being in their early twenties, one slimly built, six foot tall with short blond hair and a full gingerish beard, wearing brown corduroy trousers and a maroon shirt; the other was 5ft. 7in. tall with long, dark brown hair and wearing a red and white cheque shirt



Fans press forward as stewards wrestle with a troublemaker in front of the stage. Alex Harvey (right) spreads his hands to calm the audience

and dark jeans. The police appeal to anyone who can help trace these men to ring Leeds 35353, extension 307.

At the Alex Harvey hop in the university refectory, an ambulance had to be called after a man who had been ejected by stewards fell and badly cut his head.

He was taken to hospital where the wound was stitched. Another person also required hospital treatment after scuffling in the audience.

## Prentice's "fatuous" plan dismissed

The university has dismissed as 'fatuous' a suggestion by Education Secretary Reg Prentice that universities should sell some of their treasures to bolster their sagging finances.

Mr Prentice made his suggestion last week to a Commons Select Committee on Science and Technology. He told them that universities "had more fat on them" than other sectors of education. Universities all over the

country immediately hit back with anger.

Edmund Williamson, Leeds University's Bursar, said earlier this week that he found the plan "fatuous and unthinkable."

"We hold various valuable manuscripts and collections but they are there for research purposes. It would be absurd to consider selling them to help us out of our immediate financial problems," he said.

## Tighten belts — Taggart

University Union President Neil Taggart this week called on the union executive to aim for a nil deficit budget for next session.

He said proposals to draw money from next year's income to be placed in the reserve fund was "foolhardy."

"Our reserves are sadly depleted, but we must try to make best use of what money we have. It is no good attempting to make money from money," he said.

Mr Taggart added that a budget could be worked out in the light of the £9 per capita fee increase announced last week, which would not run into deficit.

## Union congratulates Vietcong

The University Union is to send a letter of congratulation to the Vietnamese Provisional Revolutionary Government's Charge D'Affairs in London.

Union Council on Monday decided not to delete a motion passed by a meeting of NUS Policy Committee just over a week ago, recommending that the letter be sent.

Strong opposition to the move came from UC member John Harvey. He said he didn't think the majority of students at the university would support the sending of the letter.

Member Sarah Ward said that the letter was not meant to congratulate the PRG on their policies: "We should, however note the fact that the Vietnamese people have been liberated," she said.

LEEDS CYRENIANS urgently need helpers. Full-time for Vac-Board and lodgings plus £3.45 per week. Part-time — working in house for 10 single, homeless women.

Contact: JIM EDWARDS 703824 & 634068

Veteris haud immemor vinculi is the motto of the Leeds University Old Students' Association in London. If you are leaving the University this year for the London area then keep the old links and forge new ones by joining the Association. Our programme includes an Annual Dinner, visits to theatres and concerts, tours of places of interest, informal dinner parties at London restaurants and the occasional debate or talk.

Details from the Hon. Secretary, Miss Doreen Bayley, 10 Gardenia Road, Enfield, Middlesex EN1 2HZ.

## OVERSEAS STUDENTS

Contact

### ATLANTIS

For

SHIPPING - FORWARDING - PACKING

10% Reduction for Students

Telephone:

PUDSEY 76646

7 ANDREW STREET, FARSLEY, LEEDS LS28 5DA

NOT ONLY BOOKS BUT ALSO . . .

### POCKET CALCULATORS

SINCLAIR CAMBRIDGE	£13.99
SINCLAIR OXFORD 100	£13.99
SINCLAIR CAMBRIDGE WITH MEMORY	£19.39
SINCLAIR SCIENTIFIC	£21.55
CBM 7840	£10.75

REMPLOY BRIEF CASES AND TRAVELLING BAGS  
From £1.25 upwards

SHIELDS OF LEEDS UNIVERSITY ..... £3.05

All in Stock at:

**Austicks University Bookshop**

## Is the Rapist a student?

by Nick Witchell

Could the Cambridge Rapist be a student? This is the question the city's police are pondering as they continue the hunt for the man who has raped eight girls since last October.

So far all the attacks have occurred during college term time which has led to speculation that the rapist may himself be a student.

A spokesman for the special police rape squad told Leeds Student earlier this week that they held an

"open mind" on the theory. "We are pursuing all lines of enquiry," he said, "obviously we are considering the theory that he may be a student."

Since the latest attack last week, when a 21 year old secretary was stabbed by the rapist, students in the city have been organising protection services for girls living alone.

Tony Allen Mills, President of Cambridge University Students Union, has advi-

sed girls to ensure they have company at night time and is circulating a letter containing a list of precautions to be taken.

The Union has set up its own guard service which provides two male students to sleep in the homes of any girls worried by the attacks. "We have had a good response from the men and the service is in heavy demand," said a union spokesman.

Meanwhile, there is concern that the anxiety caused to girl students by the rapist may affect their exam performance.

## NEW GAIETY

### CAROUSEL DISCO BAR

Progressive Music every Monday night

Top DJ Phil

### GAIETY SHOW BAR

Folk every Sunday night

Millstone Grit

### VARIETY SUITE

Available for private parties

Ring Roy — Leeds 624902

Roundhay Road, Leeds 8

## Arts

A novel aspect of the Centenary celebrations

# Mystery pageant back on the road

Leeds University will slip back into the Middle Ages next week, when, for the first time in 400 years, the complete York cycle of Mystery Plays will be performed. Traditional pageant wagons will be hauled along a route through the University which will take them past the Union and through the Beech Grove gates to finish outside the Great Hall.

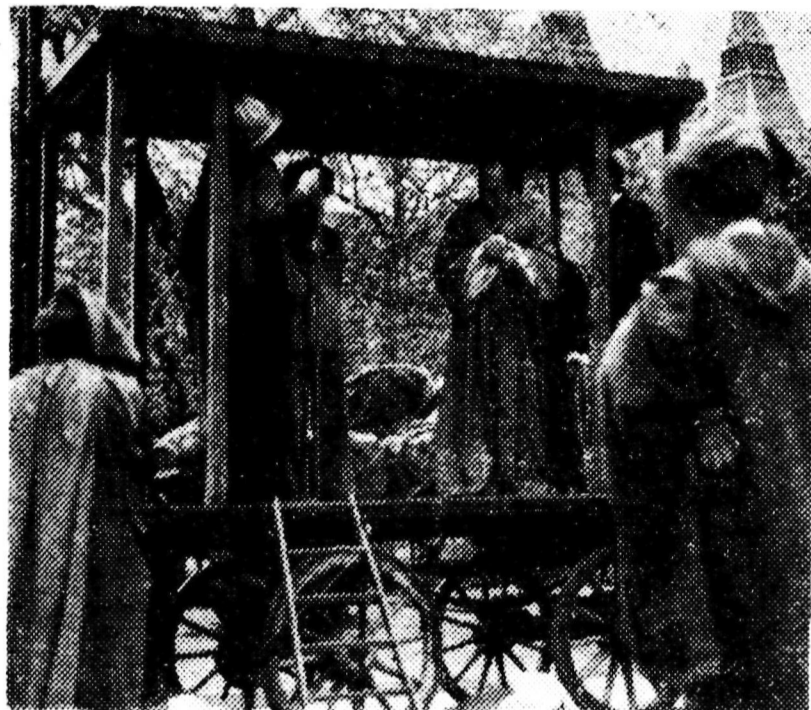
The plays developed from the processions of trade guilds which took place on the feast of Corpus Christi. It was at the beginning of the 14th century that the feast was first established, and by the 1370's the cycles were well-established.

### Church

Towns at which the cycles were held benefited a great deal, but the plays were intended primarily for the glorification of God, and for the teaching of the doctrine of the Church. Anyone who visited the Chester plays in a proper frame of mind was granted one thousand and forty-five days of pardon by the Pope.

The cycles were usually performed by the trade guilds alone, each guild presenting the same play year after year, usually with the same actors — unless the high mortality rate had claimed some members of the cast. A guild's play was usually connected with its trade — the shipwrights would take the building of the Ark, for example.

On the day of the performance, the procession would move off through the streets, stopping at twelve places, it is thought, so the whole cycle



One of the wagons which will be on parade next week

would be presented twelve times. But as it is not entirely certain how many times the plays were given, one of the aims of the Leeds production next week is to determine how many performances were practical merely from the point of view of the actors' stamina. The Leeds cycle will be presented three times; even so, the part of Christ on the cross will be very taxing.

The plays died towards the end of the 16th century because they couldn't compete with the sophistication of the new theatre and because they fell foul of the post-Reformation Church. Recently, though, the plays have come back into favour as works of art in their own right.

The Leeds production, part of the University's Centenary Celebrations, will be as accurate a representation of the mediaeval performances as possible. Several University departments have been assigned

ned a play — Earth Sciences have taken the Creation of the World and Chemistry, the Transfiguration, but it's not solely a University occasion, for several city groups have contributed — the Co-op have taken Adam and Eve, for example.

### Farmer

Altogether, over 150 groups including church groups and local drama groups, are involved. Props and wagons have been supplied by local people like the Yorkshire farmer Geoff Morton, who runs his farm literally on horse-power, and has five wagons which will be used. How long the cycle lasts will depend on how easy or difficult the waggons are to man-handle. At the mediaeval fair, which will accompany the plays there will be fortunetellers and local craftsmen of various sorts.

by Sue Beardsworth

# William's weight lost

## My Fat Friend

by Charles Laurence  
PLAYHOUSE

"Lose a Ton for Tom" is the slogan of a student style campaign mounted to remove three stones of ugly fat from Vicky, "My Fat Friend".

This, in a nutshell, is the plot of Charles Laurence's play, which, without careful consideration, could be written off as a propaganda piece for Weight-watchers. For Laurence is a victim of the same circumstances as one of his four characters. Vicky's lodger James Anderson, who has a serious novel rejected by publishers in favour of a cookery book. Laurence apparently intends to convey a serious message to his audience. But this is lost in a vehicle which

is billed as a 'delightful comedy'.

The redeeming aspect of the play, which also serves to popularise it and further distort any underlying theme, is its witty repartee. However, this is not sustained throughout and is undermined at the start by a series of weak lavender jokes.

The role of the quasi-queer of Henry, Vicky's other lodger, is tailor-made for Kenneth Williams who in fact

performed the part when the play was first presented, in London three years ago. While Peter John, who plays Henry at the Playhouse doesn't miss any of the subtle innuendo, I constantly found myself thinking that Williams' unique expression must have added an extra dimension to the original production.

Laurence's play, part of which was written in Leeds, is of high entertainment value and includes many amusing asides about modern customs but the discerning theatre goer will be left puzzled as to the raison d'etre of this work.

Ian Coxon

## What's it all about?

Alfie Darling  
ABC 3

Alfie Elkins is a truck driver who spends his life chasing women, with great success, interrupted only by the odd delivery of goods.

Unfortunately, Alan Price never really delivers the goods as Alfie. He is far too nice to make Alfie's crude boastfulness anything but nauseating and he cannot convey the same cold cynicism as Michael Caine did in the earlier film.

When Alfie falls for the sophisticated Abby (Jill Townsend) he sees the errors of his ways, and makes amends by proposing to her. All set for a rosy ending, as love blossoms while Cilla Black pipes up with the theme song, but we are brought close to tears by an ending which would do justice to Peyton Place. Abby dies in an aeroplane crash.

A mildly amusing film which doesn't produce one good laugh could never hope to recover from an ending like that.

## Character Study

Six Characters in Search of an Author  
by Luigi Pirandello  
WORKSHOP THEATRE

On one level 'Six Characters' discusses the nature of reality, for Pirandello suggests that although the Actors (and other humans) rarely have a clear and stable Self, the Characters, with their fixed and immutable essences, are truly real.

In the play six strange people interrupt a producer and some Actors who are rehearsing a play. They claim to be the Characters of a drama that has not yet been given a permanent structure because no Author has been found to write the script.

In order to convey the fixed nature of the Characters, masks and other devices are recommended by Pirandello, but Robert Page did not take up this advice for his production. This was probably because he had chosen to concentrate upon another aspect of the play, the suggestion that, like Eliot's 'The Waste Land' it is a record of the disillusionment and spiritual desolation of its time. Page stresses the passionate tragedy of ordinary people tormented and defeated by life, and plays down the philosophical surface of the play.

Within these terms of reference the play was effective, and, on the whole, well

acted. The Father (Peter Gans) was a weak, ineffectual man loathed and scorned by his step-daughter, portrayed well by Mary Tempest Whiteley).

All the main characters appeared constantly to the petulant and insensitive producer, delightfully caricatured by a blustering Anthony Hunt. They requested that he write a play to contain and give form to their tragic existence. It is interesting (and relevant to Page's production) to note that Pirandello, a member of the Fascist party, appealed to Mussolini as the saviour of Italy.

The production was essentially successful, then, but it did have some limitations, especially the fact that the novelty of the Characters was not emphasised very strongly, either by the Actors response to them, or by the use of costumes and masks, left an important aspect of the play understated.

Roger Yelland

**THE GRAND**  
Theatre & Opera House Leeds

☆ LIVE ☆  
ENTERTAINMENT  
☆ IN THE ☆  
GRAND STYLE

This week:  
**JOHN HANSON** in the Dancing Years  
Monday, 19th May, 7.30:  
**ROD McCUEN** in Romantic Evening of Poetry and Song  
Wednesday, 21st May, 7.30  
**SHOWADDYWADDY**. The Greatest Rock & Roll Show Ever!  
Thursday, Friday, Saturday, 7.30:  
**SPIKE MILLIGAN** with Jeremy Taylor  
in "For Three Only"

Book now, phone (0532) 450891 or 40971 or Leeds Libraries  
and usual agents

LEEDS PLAYHOUSE

Calverley Street, Leeds LS2 3AJ  
Telephone: 0532 42111

Nightly 7.30 p.m. Tuesday 8 p.m.  
Wednesday, 14th May to Saturday, 31st May

**MY FAT FRIEND**  
by Charles Laurence  
a camp comedy by Charles Laurence

Tuesday, 17th June to Saturday, 21st June  
Tombs Theatre Company presents  
**NO GOOD FRIDAY**  
by South African author Athol Fugard  
The lives of black people in ghetto townships. Threatened by white  
laws and black gangsters.

FILM THEATRE:  
Saturday, 17th May, 11.15 pm:  
**THE GRAPES OF WRATH** ⊕  
Sunday, 18th May, 7.30 pm:  
**TRIPLE ECHO** ⊕

## DATELINE

### cinema

#### ABC 1

Tonight and tomorrow: In full stereo sound... The Towering Inferno ⊕. Sunday 230 and 6.30. Weekdays 1.00, 4.00 and 7.20. Next week: Same.

#### ABC 2

Tonight and tomorrow: Monty Python and the Holy Grail ⊕ 1.25, 3.55, 6.25, 8.55; plus The Case of the Mukkinese Battle Horn ⊕ 3.00, 5.30, 8.05. Next week: Same.

#### ABC 3

Tonight and tomorrow: Around the World With Fanny Hill ⊕, 2.40, 5.40, 8.45; plus The Case of the Smiling Stiffs ⊕, 1.20, 4.20, 7.25. Next week: Alfie Darling starring Alan Price ⊕. Sunday 4.10, 7.55. Weekdays 1.15, 4.55, 8.45, with Your Three Minutes Are Up ⊕. Sunday 2.15, 6.00, Weekdays 3.00, 6.50.

#### ODEON 1

Tonight and tomorrow: Barbra Streisand and Robert Redford in The Way We Were ⊕, 4.25, 8.20; plus For Pete's Sake ⊕, 2.35, 6.30, LCP 6.30. Next week: Dustin Hoffman in Papillon. No times available.

#### ODEON 2

Tonight and tomorrow: Warren Beatty Julie Christie, Goldie Hawn in Shampoo ⊕ 3.00, 5.45, 8.30; and Falling Angels ⊕, 2.15, 4.55, 7.45, LCP 7.45. Next week: Julie Christie, Warren Beatty and Goldie Hawn in Shampoo ⊕, 2.15, 7.40.

#### ODEON MERRION

Tonight and tomorrow: Matinees Wednesday Friday, Saturday only: Dr Zhivago ⊕ Matinees 1.50. Evenings 6.50. Next week: And Now The Screaming Starts ⊕; plus The Mask of Dr Death ⊕. Sunday cont. 3.00 pm, Weekdays 7.00 pm, Wed., Fri., Sat., Matinees 2.00.

#### TOWER

Tonight and tomorrow: Can You Keep It Up For A Week ⊕, 1.45, 5.15, 8.45; plus Escort Girls ⊕ 3.25, 7.00. Next week: The Taking of Pelham 123 ⊕ with Walter Matthau Robert Shaw. Sunday 3.75, 7.35. Weekdays 12.30, 4.25, 8.30; plus Charles Bronson in The Mechanic ⊕. Sunday 5.40 only. Weekdays 2.30, 6.30.

#### PLAZA

Tonight and tomorrow: The Sex Adventures of the Three Musketeers ⊕, 3.05, 6.05, 9.00; also Moonlighting Wives ⊕, 1.25, 4.25, 7.20. Next week: Sex Crazy ⊕ Sunday 5.00 and 8.15. Weekdays 2.30 5.40, 8.50; also Knickers Ahoy ⊕. Sunday 3.20, 6.35. Weekdays 12.55, 4.05, 7.10.

#### CLOCK

Tonight and tomorrow: In Stereophonic Sound: That's Entertainment ⊕, 5.30, 7.50. Next week: Richard O'Sullivan in T.V.'s Man About The House ⊕; plus Danny la Rue in Our Miss Fred ⊕. Sunday 5.00, LCP 6.30. Weekdays 5.30, LCP 7.00.

#### COTTAGE ROAD

Tonight and tomorrow: Charlton Heston, Karen Black, George Kennedy in Airport 75 ⊕, 5.50, 8.40 LCP 7.40. Next week: Richard Harris, Omar Sharif and a clutch of superstars in Juggernaut ⊕. Sunday 5.00, 7.35, LCP 6.50. Weekdays 5.40, 8.25, LCP 7.35

#### HYDE PARK

Tonight and tomorrow: Cartoon and Comedy Time, 7.30; The Andromeda Strain ⊕, 8.05. Sunday, May 18th: Steve McQueen in The Sand Pebbles ⊕, 6.45. Monday 19th for three days: David Hemmings Unman, Wittering and Zigo ⊕, 6.50; plus Warren Oates and James Taylor in Two Lane Backtop ⊕, 8.35. Thursday, May 22nd for three days: Bo Weiderberg's Adelin 31 ⊕; plus Boris Karloff in Targets ⊕, 7.00.

#### LOUNGE

Tonight and tomorrow: Donald Sutherland, Elliott Gould in MASH ⊕, 7.10 only; plus Lee Marvin, Gene Hackman in the superb Prime Cut ⊕, 5.40, 9.00. Next week: What's Up Doc ⊕ with Barbra Streisand and Ryan O'Neil; plus Dad's Army ⊕.

#### LEEDS FILM THEATRE

May 17th: Henry Fonda in Jihn Ford's classic The Grapes of Wrath ⊕, 11.15.  
May 18th: Oliver Reed, Glenda Jackson in The Triple Echo ⊕, 7.30.  
May 24th: Costa-Gavras 'Z', 11.15 pm.  
May 25th: Glenda Jackson, George Segal in A Touch of Class ⊕, 7.30 pm.

#### BRADFORD FILM THEATRE

May 18th: Jean Renoir's La Regle du Jeu ⊕, 7.15.  
May 19th - 21st: Jean Eustache's: The Mother and the Whore ⊕, 6.30.  
May 22nd - 24th: Paul Mazursky's Blume in Love ⊕, 7.15. (Starring George Segal, Kris Kristofferson).

#### YORK FILM THEATRE

May 18th: Ingmar Bergman's Cries and Whispers ⊕, 7.00.

#### UNIVERSITY FILM SOCIETY

Wednesday 21st May: Truffaut's Shoot the Pianist, 7 pm Non Members buy tickets in advance from LUU Record Shop.

## theatre

#### GRAND

May 22nd-24th at 7.30 for three days only: with Spike Milligan.  
May 26th-31st: So Who Needs Marriage; with Jon Pertwee and Diana Coupland.

#### PLAYHOUSE

Until May 31st, excluding May 19th and 26th: My Fat Friend (Charles Laurence). Monday and Wednesday - Saturday performances at 7.30, Tuesday at 8.00.

#### WORKSHOP (University)

Saturday and Sunday: York Cycle of Mystery Plays. Tickets now available at Information Bureau — £1.

#### BRADFORD ALHAMBRA

Until May 18th at 7.15: Trial by Jury and The Sorcerer (Bradford Gilbert and Sullivan).

Compiled by James Massy Collier

# SPORT

Edited by Nick Kehoe

CATHY DAVIS reports from Beckett Park athletics ground

## Carnegie outclass international stars

CARNEGIE 93 NOTTS AC 86

Carnegie Athletes won a narrow victory over a strong Notts Athletics Club side which included former Great Britain discus thrower, Dennis Roscoe, last Saturday.

Carnegie picked up most points in the sprint events taking first and second places in the 400 and 110 metres hurdles the 100m and the 200m races.

There was just one tenth of a second separating the two Carnegie 100m runners with B. Fuxon (11.3) just pipping Tom Naisby (11.4) at the post for first place.

In the 400m hurdles, P. Latham opened up a gap which the opposition found impossible to close. He won in 60.6 seconds — four seconds ahead of the second placed J. Brodley (64.7) of Carnegie.

Carnegie's captain, Keith Jackson, easily won the 200m in which he clocked an impressive 22.5 secs. R. Palmer also of Carnegie was placed second with a time of 23.8. The 400m went to Notts, with Rudi Dupont winning in 49.4. Dupont came off the blocks very quickly and gradually overcame the stagger to take the lead round the

final bend to win easily by three metres.

Dennis Roscoe has been plagued with injuries the last few seasons but won the discus convincingly on Saturday with a throw of 45m 9 cm, well ahead of the second placed Carnegie man, F. Armstrong (38m 72cms).

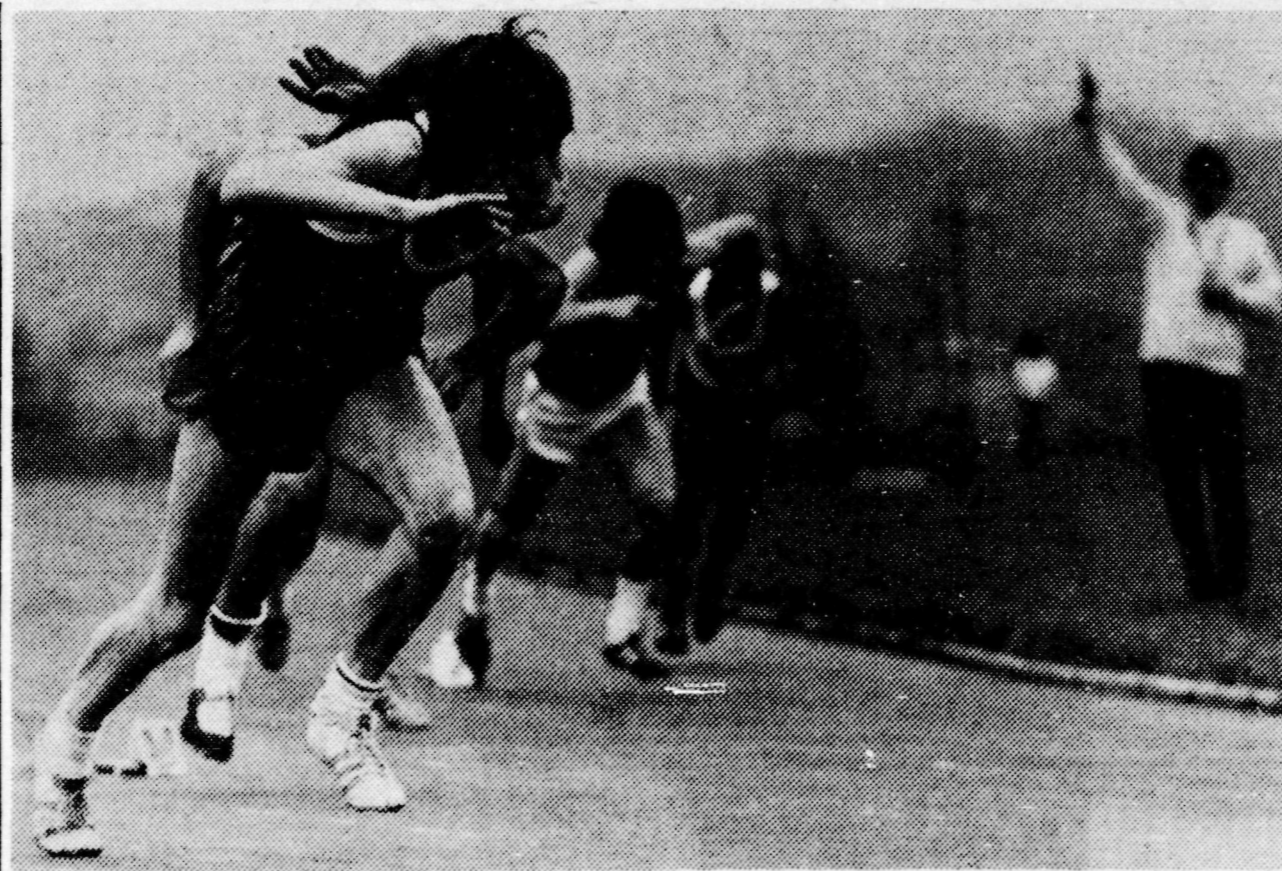
In the field events Nottingham's Chris Wilson, a junior international, easily won the high jump with a leap of 1.75m. The long jump was won by Roy Clarke of Carnegie with a jump of 21.7m.

With only four points separating the two teams the crucial events of the afternoon were the 4 x 100m relays.

Carnegie led from the start in the 4 x 100. With superior changeovers the team were never in any danger and came home in 44 seconds.

Track events: Carnegie 54, Notts AC 50.

Field events: Carnegie 39, Notts AC 36.



Picture by Ian Mitchell

They're off! The start of the 200 metres

### Varsity top UAU

The University cricket team thrashed Lancaster by 159 runs last Saturday to move to the top of their section in the UAU championships.

Leeds who won the toss and batted first, started badly losing captain Barret for only eight runs. Fowler improved his teams score with a good stand of 26 but just after lunch Leeds were still only 107 for 6.

The turning point for the University came with a superb partnership of 127 between Bruce and Standloft who scored 58 and 69 respectively.

Leeds then declared with a formidable total of 240 for 7.

The university bowlers were also in top form and the Lancaster wickets fell quickly.

Ramsaren took 4 for 31 and Partridge 3 for 19 and Lancaster were soon all out for 81.

### Cavendish champions

Cavendish Hall won the Inter-mural netball championship with a brilliant 11-7 victory over the Chemistry department, last week.

In the semi-finals they defeated the French department by 15 goals to 4.

### Loco men hold hockey side

The Carnegie hockey team were held to a 2-2 draw by a team of Sheffield train drivers at Beckett Park last Saturday.

Leeds played some fine attacking hockey but could not gain complete control of the game against a very strong British Rail side.

Carnegie took the lead after thirty-five minutes when Dave McFarlane, capitalising on a mix-up in the Sheffield defence hit a fine goal from the edge of the 'D'.

Sheffield quickly retalia-

### Hockey

ted a few minutes later, with a good goal by Fletcher.

Although Carnegie constantly pressed forward it was not until the second half that they regained the lead.

The midfield trio of Floyd Gooding and Ellison produced some fine passing shots, weaving through the Sheffield defence before Floyd finally shot the ball into the

back of the net from the inside of the 'D'.

In the closing minutes of the game, Sheffield drew level with a good goal by Higgins from a short corner.

### Boxhill carves up Cricketing Docs

In a 25 overs a side match the Poly cricket team beat the University Medics by 36 runs at Adel last week.

The Poly batted first and after a fine stand of 36 by Boxhill and 45 not out by Pollock declared at 125 for 3.

The Medics could not match that kind of standard and despite a stand of 28 by Widdrington were all out for 89 in only 16 overs.

Boxhill showed he was just as happy bowling as batting taking five wickets for only 10 runs.

### Top flyers on display

A world class gymnastic display will be staged at Carnegie College next Wednesday at 7.30 pm.

Among those taking part will be the college's own international gymnasts, Jeff Davis and Morgan Smith who finished 7th and 5th respectively in the recent world tumbling championships.

### Crossword

Our crossword compiler Arthur is away this week due to exam commitments. We hope, however, he will be back in our columns within the next few weeks.

Last week's winner was JAMES COLVILLE of Charles Morris Hall.

SOLUTION TO MARINER NO. 35

STAGEDIRECTION  
 PCRNSSHNP  
 ACTRESSSTRETCH  
 COIEEHA  
 EGRETSONNETEER  
 TOLCIBM  
 RUNWASTEDRAMA  
 AAEEULC  
 VIVIDPECKSLIE  
 EILHTU  
 LEGISLATEYEAST  
 LATNRLLI  
 ENTRANTIDIOTIC  
 RORRESDOA  
 DRESSREHEARSAL

# WIN 5 LP's

Every week this term we will be offering, in conjunction with EXPRESS Records of Grand Arcade, Leeds, five albums to the winner of this simple competition. All you have to do is identify the album cover pictured below. Send your answer, on the form below, to LEEDS STUDENT, 155 Woodhouse Lane, Leeds LS2 3ED, to arrive not later than first post on Monday. The winner will be able to collect five albums of his or her choice, total value anything up to £10, from EXPRESS Records. Any student in the Leeds area can enter — so why not have a go?

Last week's winner was MARY HEPINSTALL of SIDLAW TERRACE, LEEDS 8  
 The answer was "NATTY DREAD" by Bob Marley and The Wailers

Name.....

Address.....

College.....

Identity of Album.....

By.....

## EXPRESS RECORDS

10/11 Grand (Theatre) Arcade,  
 Leeds 1. Tel. 451994

LOWEST PRICES IN TOWN  
 Will beat any price (not s/h)

# LEEDS STUDENT

Friday, May 16th, 1975

your weekly newspaper

## BISTRO 5

— The Intimate Restaurant —

BREAK EXAM BLUES

After your revision dine as the Bistro on

PIZZAS or STEAKS

THEAKSTONS BEERS — MARANCI WINES

5 ALBION PLACE

(opposite precinct fountain)

Sunday to Wednesday 11.30 am to 11.00 pm

Thursday to Saturday 11.30 am to 11.30 pm

Romance is back  
Take her to dinner at  
Get Stuffed Dining Chambers.

She'll love the atmosphere,  
she'll love the dinner,  
she'll love you.

**GET STUFFED**  
DINING CHAMBERS

41 Park Cross St., Leeds 1. Tel: 25965  
(Off Headrow, opposite Town Hall)

AROUND £3.50 per head including wine Last orders 11.30  
10% Student Discount — Monday to Thursday inclusive



## PAUSE

Tonight: LOOK OUT

Tomorrow:

**JAB JAB**

Friday 23rd: MIND

Saturday 24th: RUDDY and the ZIPS  
(ex Be-Bop Deluxe)

Friday 30th: THE FALCONS

Saturday 31st: MASTER PIECE

Friday and Saturday, June 6th-7th: SHANGHAI  
MEMBERS FREE BEFORE 10 p.m.

— FOOD SERVED —

Licensed to sell Theakstons Ales on draught  
9 p.m. until 2 a.m. Six nights a week

**5 BISHOPGATE STREET, LEEDS 1**  
(opposite City Station)

Telephone 457758

PRIVATE MEMBERS CLUB

## Gloomy message from Tory chief

There is little comfort for Leeds' colleges following the capture of the City Council by the Conservatives in the recent local government elections.

The new Chairman of the Education Committee, Councillor Paul Crotty who succeeds Labour's Cllr Doreen Hamilton in the post, told *Leeds Student* this week that with the present clampdown on local authority spending it was impossible to be optimistic about the coming months.

"In over twenty years of local council work I have never started a new appointment with quite so many worries as I do now," he said.

He said he did not think local people realised how serious the situation was: "Everybody is going to suffer", he added.

Mr Crotty takes up his post officially on Monday. He declined to comment about his party's views on the re-development of Park Lane College's St Peter's Annexe, which was recently condemned as "uninhabitable" by the Department of Education

and Science. There are fears that if it closes at the end of this academic year and no alternative teaching accommodation is found, the college will have to reduce its intake by 30 per cent.

He also declined to say anything about the merger between the City of Leeds and Carnegie College with the Polytechnic and James

Graham College.

"Until the new committee has met and considered these various matters in detail I cannot say whether our approach will differ from that of our predecessors."

"But", he added, "I cannot see many basic differences since we will be operating in the same financial squeeze as they did."

## A woman's right

The University Union is to affiliate itself to the local branch of the National Abortion Campaign.

Union Council member Sarah Ward told Monday's meeting that it was important that the union lent its support to the Leeds branch of the campaign before the third reading of the James White Abortion Amendment Act, due before the end of the present parliamentary session.

The Poly union affiliated to the campaign several weeks ago. Chris Walton, a member of the union's Women's Group said that they would be giving as much support to

the NAC campaign as possible.

There is to be a Week of Action in Leeds from June 7 to 17, finishing with a city centre demonstration. A national demonstration in London is being held on June 21.

## Dogs banned again

Dogs are to be banned once again from the University Union, it was decided this week.

Union Council member Julian Vearncombe, who proposed the ban at Monday's meeting, said that dogs were running around the

union building without leads, and several people had been bitten: "It's a dangerous health risk," he said.

The ban, which does not include guide dogs for the blind, takes effect from this coming Monday.

## THE BOOK MACHINE

Deposits taken now for BOOK EXCHANGE.

We sold 6,000 books this way last year — what about yours. Come and see us in the University Union.

## TYKE-HIKE

Forms from Porters Office

JUNE 15th, 1975

3 PICK UP POINTS

1 PARKINSON

2 SKYRACK

3 BODINGTON

PLUS REQUESTED STOPS  
PRIZES FOR MOST SPONSORSHIP



One last fling before exams:

Saturday, May 17th:

### MAN

Featuring JOHN CIPPOLLINA  
(ex Quicksilver Messenger Service)

plus

A BAND CALLED 'O' — £1.00

Saturday, May 24th:

### BE-BOP DELUXE

plus Support — 80p

Tickets on sale NOW at porters/services—on the door

## LEEDS UNIVERSITY UNION

### General Meeting:

The Next OGM is scheduled for Tuesday, 20th May, 1975. See posters for more details.

### Freshers' Conference 1975

Assistance will be required. If you are willing to help, either as a Group Leader or Steward, see the General Secretary in Executive Office.

### Counselling Service:

If you have any problems, discuss them in complete confidence with trained counsellors.

**Counselling Room, West Wing,  
Union Building**

**12.00-14.00 and 17.30-18.30**

### Union Annexe:

Societies wishing to use rooms in the Annexe should contact the House Secretary as soon as possible.

**N.B. Dogs Banned from Union  
Building—Starting Monday**