

# Leeds Student

27th November 1981

FREE

- ★ Paisley calls for Northern Ireland to be made ungovernable - a 'Third Force' is set up in addition to the UDA, UVF, etc, etc.
- ★ IRA's bombing campaign extends their war against the British Army in Ireland to Britain.
- ★ Thatcher too extends the war against the 'terrorists' to Britain by a campaign of search/detention/interrigation of supporters of the Irish National Liberation war under the powers of the **Prevention of Terrorism Act (PTA)**.

## WHO ARE THE REAL TERRORISTS?

Day conference on Ireland with speakers from: British labour movement, Middlesex Poly students arrested under the PTA, H-Block/Armagh Committee, Dublin.  
**SATURDAY, DECEMBER 5**  
**BELLE VUE CENTRE, BELLE VUE ROAD, LEEDS. 10.00 - 18.00 hrs**  
 Registration £2 (Unemployed £1.50) - ORGANISED BY RCS/SPTAC

### In Brief..In Brief

#### Show success

A commendable £160 was raised for the NSPCC at Cavendish Hall's annual fund-raising event which took place in the Poly's Beckett Park Bar.

Ian Burton and Richard Calvert had worked hard to stage a very entertaining show which included dance and comedy routines. Other fund-raising attractions included show-shiners bunny-girls and the novel idea of auctioning slaves. A disco was provided free of charge by "Fergulyn" with the money from the ticket sales also donated to the NSPCC.

#### Cheeky Rag

Students from the University of Surrey have side-stepped a LUU ban on their rag mag.

At the weekend, a band of intrepid raggies made the 250 mile trip from Guildford to Leeds - knowing their rag would get the cold shoulder from the exec because of its racist and sexist jokes.

Last February, a decision was taken to ban the sale of any rag publications containing discriminatory material on union premises.

So the Surrey students peddled their mags around university flats and halls of residence.

To add insult to injury, the 30p mag contains several barbed references to the LUU stand.

An example: "Wanted - Leeds student with a sense of humour".

The letter informing the Surrey exec. of the ban is reproduced in full in the mag. No other campus has come in for the same treatment as Leeds.

#### Chunttee Leong

The High Court in Leeds has decided to hold another hearing, probably after Christmas, to decide the case of Chun Hee Leong, the Malaysian student from Kitson College who faces deportation.

The Chapeltown Law Centre and Chun Hee's mother have been told that they must produce evidence during the next two weeks to prove that she supported Chun Hee while she was in England and he was in Malaysia. The Home Office will then decide whether there is a case for a judicial review.

If the Home Office decides to contest the evidence it will ask the High Court to set a date for the hearing. If not, Chun Hee Leong and his mother will be left in peace.

His mother says that she now has all the documents to prove that she did have sole responsibility for her son during their separation. In the meantime the Law Centre has written to the Home Office asking them not to proceed with the deportation order until after the hearing has taken place.

This Monday night at 7.30 pm there will be a meeting in the University Union to decide whether anything more can be done to aid the case.

# KERSHAW SELLS OUT

If LINX'S gig at the University is the shape of things to come then their whole tour is guaranteed to be a knock-out success.

It is an acknowledgement of Leeds' reputation that Linx are playing here as this is the only student date on their first tour. A combination of perceptive bookings by Ents Sec. Andy Kershaw early in their career and excellent publicity within the Union has ensured a sell-out success. Andy Kershaw commented, "this is the high point for me of a really good term, nearly every concert this term has been a sell-out, this is one of the best terms I've had here and certainly the most profitable".

Following the success of "You're Lying" and "Intuition" singer Dave and bassist Sketch have founded a successful 'home-grown' Tunk band on the strength of three singles and a debut album. Andy commented "Because they are a singles band their success so far has been entirely dependent on it, so I reckoned the gig was either going to be a total success or an absolute disaster.



#### CND is here to stay

Leeds University will play host this weekend to the annual Student CND Conference. A weekend of workshops and discussions is planned, to take place in the Riley Smith Hall.

About 200 delegates are expected to attend, living on the floors of student flats. The workshop sessions will include discussions on NATO, the Cold War, Unilateralism and the "Russian Threat".

## Ramp by Xmas?

A wheelchair bound student has had to endure months of discomfort and inconvenience to reach classes - because college authorities failed to instal two wooden ramps.

Chris Lydon, a 17 year old was born with Spina Bifida. Each morning he has to negotiate a series of

obstacles before he can begin with his studies at Park Lane Further Education College.

He has to rely on fellow students to lift him in and out of 'The Huts' - part of the college where his course is held. They also have to aid him when he wants to reach a lavatory for the disabled - situated in an adjacent building.

When he came for interview for his course - Basis for Choice, a one year programme intended to help students with low CSE and O level grades - he was told ramps would be provided.

Five months later he is still waiting for them to appear. His morning journey begins with a taxi ride to Park Lane. Then comes a 30 yard push up a steep, narrow path, ending with three steps. Classes cannot be arranged for him in another building because of purpose built equipment installed in the Huts.

A college spokesman said most of the problems with installing the ramps had now been overcome. He expected the ramps would be in position by Christmas. Materials are to be supplied by the college, and labour by the Youth Opportunities Programme.

Chris said it took about 10 minutes at least to reach the lavatory. The college said delays over estimates for the work, and liaison were now largely out of the way, so Chris should soon be able to attend his course with less difficulty.



● The Steps

#### Memorial Service

A Memorial service was held last Monday for the late Vice-Chancellor of Leeds University Lord Boyle.

The Service opened with a University procession led by the Chief Marshall, with the President of the Union, Seamus Gillen carrying the University Mace. They were followed by Civic and Clergy processions, to the accompaniment of organ music from Bach, Davies and Elgar.

The Lesson, from the book of the revelation of St. John, was read by the Pro-Vice-Chancellor Prof. Brian Hogan. Prof. William Walsh, the Acting Vice-Chancellor, read the Address in which he praised the service rendered by Lord Boyle to the University and the City.

He was Vice-Chancellor from 1970 until his death in September this year.



RAY CASTLE



# O.G.M. NEWS

A student barred from the union because he threw a bucket of water over former president Chris Shenton has been officially pardoned.

This week's LUU OGM voted to waive the ban on Tej Singh, after a gushing speech from Shenton's successor, Seamus Gillen.

He turned the tide of opinion in favour of removing the ban, imposed last summer, providing Mr Singh offered an apology.

The meeting heard that Mr Shenton was caught in his best suit, en route to a funeral, when he received the liquid vote of no confidence.

Events sec Chris Karle was the only speaker to spout opposition to the vote. He said he refused to condone any form of violence directed against a union official.

The remainder of the meeting developed into a verbal duel between deputy president Jim Murtagh and treasurer Andy Kershaw.

Round one came over a proposal to divert £36,000 from building improvements in



● ANDY KERSHAW

the union to other areas, including the women's centre and minibus service.

Andy pointed out that over the last decade the union facilities had undergone continual improvements, to claw union services back from the brink of delapidation. He said most members effectively voted in support of maintaining standards through an increase in use of facilities.

Jim said money was already committed to essential health and safety measures, and this was not the subject of the debate. He said cash should be re-allocated to help more deserving causes, including the nursery service, the women's centre, the minibus service and welfare groups such as Action.

Andy said the cash offered by the University was a lump sum. It would be withdrawn



● JIM MURTAGH

if not used for the specified projects.

A two thirds majority rejected the plan to re direct the funds.

Round two came with a row over union policy on officials accepting free lunches. Jim attacked this practice, but Andy rebuffed this by saying it was accepted business practice, and would not necessarily influence exec members decisions on which firms they did business with. President Seamus Gillen brought the debate to a close with a ruling that accepting free meals was unconstitutional. He said he always paid for meals provided at University functions, and ruled that in future other exec members should follow suit.

By MARTYN WINCUP.

## POOR SHOWING FROM LEEDS AT WESTMINSTER LOBBY

Lack of support and organisation were the keynotes for the LUU contribution to the education cuts lobby at Westminster last week.

Demonstrators filled only one coach, instead of the expected five - and half of the passengers on this were an overflow from the AUT train which left Leeds on the same day.

The 20 students aboard must have been left wondering whether their journey was really worthwhile.

Union president Seamus Gillen turned up to wave them off - but he too seemed ill informed about the protest.

On arrival at Westminster, events became no clearer. Groups of 'protestors' began to drift off...some apparently bound for the West End, after deciding that a lobby of Selfridges would prove equally rewarding politically.

Others made for the House of Commons, despite the words of a post-grad, who told the group that there was scant chance of seeing any MP without an appointment.

The remainder made for Caxton Hall and Central Hall,

to meetings where anti cuts debates would be aired.

Students were turned away from the Association of University Teachers (AUT) meeting at Central Hall, but were admitted to Caxton Hall.

There NUS and white collar union representatives from NUPE, NALGO and ASTMS urged a strong anti cuts line.

NUS president David Aaronovitch and union leader Clive Jenkins gave particularly rousing speeches.

A few Leeds students found to their embarrassment that neighbouring Bradford mustered five coach loads, including most of their exec, while Sussex travelled up from Brighton in a rumoured 17 coach convoy.

All this bears a sad reflection on the Leeds campus and prompts questions on the lack of publicity pushed out by exec. It's interesting to note that on the day of the lobby, education secretary Piers Williamson was apparently nowhere to be seen.

SUE RYLANCE.

## MORE 'THRILLS' COMING TO UNIUNION BARS

Andy Kershaw, Union Treasurer and Ent's Secretary, has announced plans to attract more custom to Union bars by making them livelier, and providing regular free entertainment.

Jazz and Folk music as an accompaniment to conversation and drinking will be encouraged, and a 'honky-tonk' piano, plus resident pub-pianist, will be installed in the Tetley bar.

Barry Andrews of Brighthouse games has promised to provide a '160 selection' juke-box for the Tetley bar at the same price as the one currently in the M.J., which incidentally is to be removed.

The emphasis is on providing 'thrills' on the boring nights of the week!

Earlier this week there was a free trial with a video film projection unit aimed at boosting sales in the Doubles

bar. If this is a success, it is proposed to hire a video projector and films, and hold free film shows in the Doubles bar on at least three nights a week. The costs would be recouped by increased bar sales, and hopefully the system would give Network Four a captive audience for its News and feature programmes.

Events will be published in a special 'Whats On' notice in Feedback.

It is also planned to give the Tartan Bar the attention of a design consultant and to install cozy spotlights in the Tetley Bar to 'soften the atmosphere.'

All these ideas have met with the Bar managers approval, and Mr. Kershaw hopes that a weekly programme can be organised between himself and other members of Exec.

By MARILYN HONIGMAN.

## FIRE IN UNION EXTENSION

Firemen had to be called when a fire broke out in the Union extension on Monday afternoon. Building contractors, burning pitch of the roof in an attempt to stop it leaking, accidentally set fire to rubbish in the insulation cavity above the ceiling.

The fire had been smouldering for a couple of hours before firemen were called at 12.30 pm but they put it out almost immediately by knocking a hole in the roof and flooding it.

Thus is one more tale of woe in the saga of the seemingly jinxed roof. At the time of the fire workmen were trying to repair a permanent leak in the other end of the roof.

It now seems very unlikely that the repair work will be finished by its original completion date of December 5th.

By CHRIS LUMB.

## 'STRAY CATS' FOR CHRISTMAS

Don't Rush home for Xmas! That's the message from LUU Ent's, who've managed to pull off an 11th hour booking for Fri 18th Dec, when the Stray Cats will appear.

Tickets at £3 will be on sale at the union record shop soon.

The Pretenders concert has sold out, but Ent's Sec Andy Kershaw is anxious to quell rumours that Ms Hynde and co have pulled out. He says unequivocally, they have NOT cancelled.

PS: John Patterson - a T shirt has arrived at the Porter's office for your collection - bring along your union card as I.D.

## PHANTOM FLAN-FLINGERS

Phantom flan flingers went on the rampage at Oxley Hall last Thursday...and almost landed themselves a plateful of trouble with the law.

The antics of the custard pie commandoes - dressed in para military style clothing and wearing masks - came to the attention of the local constabulary after Oxley's warden took exception at becoming a prime victim.

It's understood that, far from entering into the spirit of this charity event, the warden wanted to press charges against the flan flingers, but police left without making arr-

ests. "It's the best laugh we've had in ages," said one officer at the scene.

The escapade raised just over £9, to be presented to Action to benefit mentally handicapped people.

The raiders told us they wished to remain anonymous, but said the episode was motivated by an Oxley residents jibe against Devonshire residents.

Apparently in Oxley circles they bear the unflattering suffix "stiffnecks."

AILEEN DUFFY.

## CARNEGIE UPSETS

A Special General Meeting was held last Tuesday at Beckett Park to reverse the decision of the OGM of the 12th November regarding the allocation of places in Carnegie Hall.

Over 180 people, nearly all from Carnegie School, accepted an amendment to the original motion, and concluded the meeting in just over ¼ hour, making it the fastest meeting held this year.

The meeting was called because Carnegie students felt that the new Union policy represented another in the destruction of the traditions of Carnegie School, and was thus against the interests of a large number of students at the Polytechnic.

However in its original form the motion for the SGM was so weakly worded that Poly President Sean Morris felt obliged to get

it amended, saying: "It wouldn't be fair to get this passed. It would only cause bad feeling."

The amendment to the motion was much more precisely worded, instructing the Exec. to "uphold the system of allocating places in halls of residence", and "ensure that all students in Carnegie Hall are Carnegie School students."

Nobody spoke against the motion, and it was passed with only three votes passed against.

However the saga will continue....Bob Goarlay in his summing up speech told the meeting that a motion had been put to the OGM for 26th November to reverse the decision of the SGM.

This subject was first raised two years ago, and it doesn't look as if it has finished yet. This one will run and run.

By CHRIS JAMES.





# UNIVERSITIES TIGHTEN THEIR BELTS

Universities throughout the country are making contingency plans to balance their books after the Governments latest refusal to make any concessions of the cuts.

The proposals have been varied and inventive, but so far none as controversial as those of the University of Manchester Institute of Science and Technology. Admission tutors at UMIST have been told to admit Overseas students of lower academic standard than they require from home students.

Overseas student numbers have been falling ever since the Governments decision in 1979 to stop paying their fees. UMIST is 150 short of its usual quota this year and badly needs the extra revenue from their fees.

UMIST might not be the last College or University to adopt a double standard of entry. If overseas numbers continue to drop, other institutions will

have to consider ways to bring them back.

Birmingham University has now reached the stage where it can neither afford to keep lecturers on, nor make them redundant. Only a handful of academics have so far been 'retired early' at a cost of £130,000, but it has no more money to pay compensation for the other 300 jobs that are due to go.

An unlikely combination of Prince Philip and GEC Power engineering have got together to promote Salford University, but its neighbour Manchester is facing a deficit of £8m by 1983/4 unless "corrective measures" are taken. Part of its survival plan is to ask lecturers to forego salary increases, or covenant part of their salaries to the University.

Chelms College, London is in similar financial straits. Their Finance Officer says that he is unable to pay bills totalling £800,000, and if the

College is going to survive it will need to borrow £2m over the next 12 months.

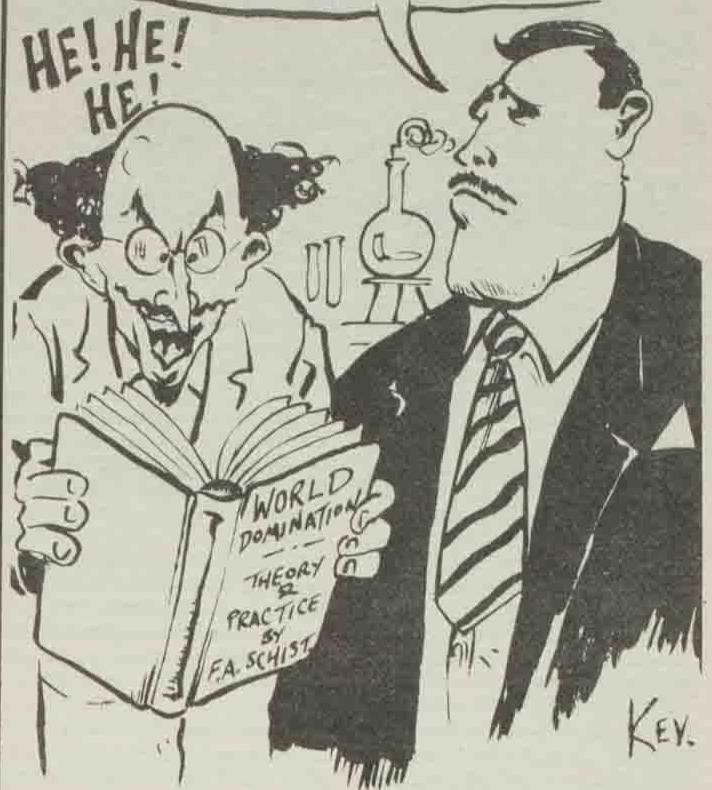
Sheffield University is planning to sell off any excess land or buildings.

Aberdeen University has told Scottish M.P.'s that the scale of the cuts imposed on them is threatening them with extinction. They say that they have received no convincing explanation from the U.G.C. as to why their cut (of 23%) was so severe. Like Birmingham they cannot afford to pay redundancy compensation to the 370 staff it is going to have to sack. The Treasury is going to have to pay if Aberdeen is to survive. That means a £6m bill in the interest of saving £1.5m from the University's budget!

All this at a time when UCCA has announced that application from home students for entry next year are up by 7%.

By JAMES MATES.

THIS BOMB SCARE HAS GOT PEOPLE TALKING, PROFESSOR. JUST WHAT ARE YOU RESEARCHING INTO ?!!



The Physics Administration building was evacuated last week after a bomb scare. A man telephoned the switchboard at about 1.20pm to say that a bomb had been placed and was timed to go off at 2.15pm. Police were called, but after a search by security officers the building was reopened at 2.20pm.

## EXEC MEMBERS ARRESTED

Two prominent members of the University Union were arrested and charged with 'breach of the peace' at an A.N.L. demonstration in Dewsbury last Saturday (the 21st).

Rob Farn (Welfare Officer) and Chris Karle (Events Secretary) were taken to the demonstration by the Union minibus as part of a group, which included 20 other Union members, protesting against a public march through the city by the extreme right wing group the British Movement.

Mr. Karle and Mr. Farn were arrested while attempting to come to the aid of active Union member Helena Cunningham who appeared to be in some difficulty after an incident with a B.M. member. They were detained for four hours at the police station and finally charged with 'Words or behaviour liable to cause a breach of the peace'.

The cases come up before the magistrates court on the

21st of December and both Mr. Karle and Mr. Farn stated this week that they intended to plead not guilty.

The march itself consisted of between 50 and 70 people; the vast majority of whom, according to one eye witness, were aged between 12 and 14, and supposedly protesting against Tory policies but was routed through an area of high Asian population and maintained a constant barrage of Nazi salutes and chants of 'Sieg Heil.'

The general feeling amongst the protesters, however, was that the police presence was disproportionate to the size of the march; comprising, they claim, of a sizeable external force, a number of S.P.G. units, a horse division and police dogs in addition to the local force; which, they maintain was protecting what they regard as an inflammatory gesture.

By DON WATSON.

## PARK LANE SHAMBLES

Park Lane College's Student Union is still trying to recover from the mess the last President, Peter Stevens left it in.

He took over from Nigel Fisher, now General Secretary of LANUS, during the Summer term, and left abruptly to take up a place on a drama course in London. But the shambles he left behind lingers on. "It has taken the Union Secretary and us up until now to make sense out of the mess and we're still not up to date" commented Ruth Passman who took over from Mr. Stevens. "The election procedures for a new president were not initiated until the day before he left, and I had to go round telling people that they could stand against me. There was no attempt made to explain the key system, and the key box itself was always left unlocked. We're still finding keys in odd drawers. I'm not sure that we have all of them now, as we've kept the stockroom locked, and things have still gone missing, which suggests that there are still outstanding keys."

The shop itself was still closed this week, a hangover from the state in which Mr. Stevens left the stock room. "When I first went in there" said Ms. Passman "Stock was piled all over the floor, and there were no records. The shop was closed and I called in the accountants. In the Union Office there was no filing system, the bank was not informed of the changeover, so I couldn't issue cheques etc, to cover salaries. Pete set up a system of perks for Union Officers such as free drinks at meetings which is all very bad for a small student organisation. We've only just got a full exec together, and things should be a lot better in future."

## F.C.S. SAY: "14% IS ENOUGH"

The Federation Of Conservative Students has declared the claim by the National Union of Students for a 17.4% increase in the grant "unrealistic", despite the fact that the under secretary for education, Mr William Waldegrave, this week told student leaders that he felt they had put forward a reasonable case for the claim.

Mr. Tim Linacre, Chairman of the FCS, suggested that a claim for 4% was a more realistic target, being in line with the public sector pay guidelines. He pointed out that students were already a "fairly privileged minority", and added that he did not see why they "should be treated better than, for instance, British Leyland workers."

At present the maximum grant outside London is £1,535; if the NUS claim were accepted it would rise to £1,803. However, the NUS president, Mr David Aaronovitch, was far from hopeful after the meeting with Mr. Waldgrave. He feared that the grants budget might be cut by as much as £100 million. The Government appears to have three options: abolition of the £410 minimum grant, increasing the parental contribution,

and awarding only a tiny increase in the grant. Following its discussion with ministers the FCS believes that the minimum grant is certain to be abolished.

The Yorkshire Region secretary for the FCS, Mr Steve Lane, said that he was not surprised by Mr. Linacre's quotes, as they have a national disaffiliation campaign which is not supported either by Mr. Lane himself, or the YRFCS, or by the Leeds University FCS.

Mr Lane is seriously considering standing for the presidency of the University next year. He added that he regards the call for an increase of 4% as unrealistic, and suggested that 8% to 12% would be more viable.

Mr. Sean Morris, president of the polytechnic and vice-chairman of YRFCS, stated his opinion in forceful terms.

"As usual Tim Linacre speaks without thinking" he said, adding that he too thought that a demand for an increase of between 10% and 12% was more realistic. Asked what he thought the chances were of such a demand being met, he replied "I really don't know."

By ROZ KAY.



● ROB FARN



● CHRIS KARLE

## R.S.H. REPORT ACTS "AS CATALYST"

Following a report in the November 13th issue of Leeds Student drawing attention to the unsatisfactory standard of the work done on the Riley Smith Hall, many of the recommendations have been acted upon.

Martin Blakey, Union Research and Welfare Officer commented: "The story in Leeds Student acted as an essential catalyst in making sure that the work was completed."

The decor has been returned to its original 1939 style

and a few technical problems, such as the missing covers on the electrical trunking have been remedied.

Mr. Blakey blamed the delays on "too many bodies dealing with too many bits of the same problem."

## GRADUATE RECRUITMENT FALLS

Major companies are making stringent cuts in their recruitment requirements for the coming year.

One example is British Aerospace Aircraft Group who have made a substantial cut-back in the number of students they are going to interview at Leeds. Last year they had 2,500 applications for 100 jobs.

The reasons for their cut are a lack of movement within the company and a glut of trained apprentices; the legacy

of far-sighted training schemes in the recent past. They are trying to avoid what they called "Graduate Indigestion" and, remarked that future job prospects were poor.

Other areas of the recruitment picture were described by the Careers Service as "Very healthy" and this has prompted us to examine the whole picture of current Graduate recruitment.

See Perspective in next weeks issue.







# President under attack

Dear Sir,  
Sean Morris wheeled out all the old ruses in his contribution of last week. His letter either avoids issues altogether, or directs attention away from them by claiming virtue in irrelevant areas (para. 3). Added to this however are straight evasions on one or two crucial points. These may have left some Union members confused, and they consequently merit a reply.

Morris "resents his policies being brought into student affairs", as if Toryism were a personal attribute like buck teeth or a stutter, and therefore above reproach. This is all very touching, but it's an ABC of democracy that the rank-and-file has the right to assess a candidate's political position in advance, since on election he or she will be responsible for speaking for the membership. Rather than being a "private" issue or an issue of conscience, politics here is the public concern of everyone. And of course politics comes into student union affairs. The subject of my original letter was the attempt of Morris and his cronies to prepare the ground for LPU disaffiliation from the National Union of Students (Leeds Student 6th and 13th November) but Morris is still clinging on to his "non-political" fig leaf, only a week after the failure of that coup! In doing so he adds insult to injury for the mass of Poly students.

The alibi he produces on the election is peculiar, to say the least, and it immediately prompts a question. If Sean Morris was so adamant on the point back in the spring, and his political views were "quite well known" then, why didn't he insert an appropriate disclaimer in his material, in order to preempt this sort of "misunderstanding"? Perhaps something along the lines of "you may have heard a rumour that I am a member of the Federation of Conservative Students. This is perfectly true, but I promise that if I am elected, every time the Federation issues instructions to its member activists, I will try

very hard not to listen"? But of course, that would have let the cat out of the bag.

It was also implied that anyone could have found out about Morris' politics by attending one of the hustings meetings, where he was questioned constantly on that score. It would be a healthy situation indeed if hustings were attended by the majority of students, but everyone knows that in a normal period only a handful will actually take the trouble to go. Thus the main medium of communication remains candidate's printed statements, so I would repeat that the FCS has only managed to capture the two leading positions at the Poly Union by underhand methods.

Nor is Mr. Morris telling the truth about financial support from the Conservative Party. He denies having received any; however early in the campaign, one of the candidates informed me that Morris had just asked him to run on an FCS ticket. The individual concerned (a non-sabbatical officer last year, now a sabbatical) is by his own admission apolitical, and had the integrity to refuse. I don't recall the amounts involved, but the significance of the FCS getting an extra candidate onto their (secret) slate was that the adult Party's backing would increase more than proportionately. Whether or not Morris and the Second FCS candidate actually overspent on the campaign is not the most important issue, although it is still important. The subject of finance was raised because it poses very clearly the question of political allegiance.

For example, the Labour Party has an interest in winning students to Socialist ideals, and accordingly subsidises the general leaflets etc. used by the National Organisation of Labour Students. This is all above board, because NOLS activists operate openly on the basis of their ideas, especially when putting themselves forward for positions. And they have done so at Leeds Polytechnic Union (in elections for NUS conference delegates) when the FCS candidates,

including Morris again, said nothing political whatsoever.

Sean Morris displays the sickening hypocrisy of all Tories, in ruthlessly pursuing a class political interest but simultaneously presenting their every action as sweet, reasonable and "above politics"? Of course the capitalist status quo and its representatives are never political, its only those who challenge who are "playing at petty politics". Imagine the rumpus the FCS would kick up if it had been two left wingers who had gained office by covering up their political affiliations!

Mr Morris asks me to acknowledge the enthusiasm and hard work of the "entire executive" at L.P.U. Not being a polytechnic student now, it would be presumptuous of me to generalise, but I can at least salute the enthusiasm of members Cregun, Gratwick, Godwin, Bako, Ward and England in getting into print so quickly to disassociate the Executive from the petty politics of the president, his deputy and the regional FCS organisation. May I suggest that their next action should be to force Morris to stick to the mandate of his own past statements, and - at the very least - to censure him every time he forgets himself and carries out a political action, or utters a political syllable? (Apparently "the students don't like it").

The dangers to the Poly Union outlined previously will continue as long as these two characters hold their ill-gotten posts. I hope that the Union leadership as a whole, in conjunction with the permanent officers, will introduce democratic safeguards into the election procedure, operative from next year, so that the Conservatives can never pull a fast one on the student body again. If this isn't done, one day they may even fiddle an outright majority for themselves, and for Sir Keith Joseph and friends.

Yours sincerely,  
**LIONEL WRIGHT**  
(formerly of National Organisation of Labour Students and L.P.U.)



## Happy landings

Dear Sir,

I am writing on behalf of the L.U.U. Sport Parachute Club in response to a letter from Kevin Smith in your last edition.

I should like to draw readers' attentions to the reasons why the training and parachuting which we offer is, in fact, superior to the scheme Mr. Smith outlines in his letter.

1) We are not concerned with the military, nor do we require training equipment designed with their purposes in mind.

2) We are trained only by fully qualified British Parachute Association instructors. Our training is not, as he suggests, in any way "lacking". All our jumpers are trained in accordance with BPA rules, which stipulate 13 hours basic ground training, including much practical as well as theoretical training.

3) As Mr Smith is himself forced to admit in his letter,

our training is cheaper. Also we do not have an 80 mile trip to Bridlington to pay for, and in any case our travelling is subsidised, cutting costs yet further.

As far as I am aware, the Parachute Regiment exists to drop troops quickly into a combat arena in wartime. We are not interested in boosting Army recruiting figures! What we wish to do is to introduce students to the sport of parachuting. We succeed in doing just that for a large number of students, keeping costs down, and above all with SAFETY as our watchword. In view of that, I would thank Mr Smith for wishing us luck, but point out that "luck" is the last thing we need since we take no chances on safety and sacrifice nothing to ensure that our students receive the best possible training.

Yours Faithfully,  
**HENRY BERRY,**  
President, LUU Parachute Club

## Iran Solidarity

Dear Sir,  
**IRAN SOLIDARITY COMMITTEE LUU**

There has been a characteristic lack of publicity and analysis in the British media about the executions taking place in Iran under Khomeini's regime.

There have been **More than 3000 executions in recent months** including pregnant women and school children (some as young as 9). Amnesty International has condemned these executions and said that there have been more executions in Iran in 2 months than the total for the whole world in the year 1980. On one occasion 100 school pupils who had been wounded in a demonstration were taken away from the hospital and executed.

**Unemployment** is at 5 million and inflation at 100% per annum. **Workers' councils and unions** are banned and **strikers face execution. Iranian women** who played a large part in the struggle to overthrow the Shah have seen their progress towards liberation reversed. Under the present reactionary regime women are denied **equal rights and status and are regarded as second class citizens.**

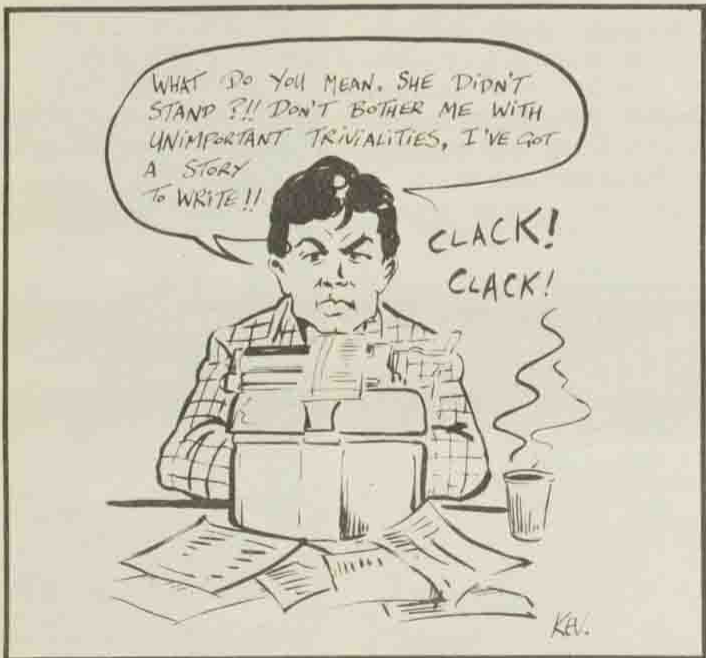
**All universities have been closed** for two years due to Khomeini's regime's intolerance of the activities of progressive and aware students. The future of more than 100,000 students is now uncertain. 70,000 school students have been barred from attending classes. All political opposition is forbidden.

**National and religious minorities are savagely suppressed**

In such a situation the Iranian people have been forced to a rightful and just resistance by all possible and legitimate means. Iran Solidarity Committee, L.U.U. has been formed to campaign for the most widespread condemnation of Khomeini's barbaric regime. In solidarity with the Iranian people we are demanding an immediate end to the executions and the release of all political prisoners.

For more information and a chance to participate in our activities, **COME TO OUR GENERAL MEETING ON MONDAY COMMITTEE ROOM A AT 1 PM. SUPPORT THE IRAN SOLIDARITY CAMPAIGN.**

Iran Solidarity Committee



## We're Sorry!

Dear Editor,  
In the edition of "Leeds Student" published on 20/11/81 there was a mention of my name in the section entitled "In Brief".

Your writer incorrectly stated that I stood as a candidate in the recent NUS Conference Elections and "could only muster one first preference vote," this probably being my own. I take extreme exception to

this type of irresponsible reporting, especially in view of the fact that your reporter could so easily have cross-checked his material.

In conclusion, I wish to register a strong protest with you and your staff, and may I request that you put the record straight.

Yours,  
**LYNNE GURNEY**  
Sorry - our fault, Ed

## Crossword Prize

Last week's crossword puzzle prize was won by **J.P. Ratloy**, who wins two complimentary tickets to the Hyde Park Cinema.

The completed crossword is shown below:

H	E	B	R	E	W	S	E	R	G	O	F			
A	O	C	P	N	O	A	I							
C	A	U	G	H	T	R	E	D	H	A	N	E		
K	R	O	I	I	T	C	H	V	E	D				
K	I	B	S	N	A	R	K	F	A	L	L			
E	O	L	G	O	S	N	E							
Y	A	N	K	E	S	N	O	T	I	C	E			
B	V													
R	A	I	M	E	N	T	F	L	A	P	P			
A	S	S	L	H	L	W	A	E						
D	O	C	K	D	E	B	U	T	O	Y	E			
I	L	U	T	R	S	S	M	I						
C	H	I	N	E	S	E	C	H	E	C	K	E	R	S
A	T	A	S	E	U	N	T							
L	U	R	S	A	D	E	H	O	T	E	S			



## Pseudos Corner

Dear Don "Dare",  
I would explain, but you'd never see in a million years.  
Love,  
**ROY HOLLAND.**  
P.S. "There, there my dear."

I'd listen to your letter but your logic's far too lame. And I'd only waste a couple of valuable minutes of my life with your insincerity."  
**DON DARE.**



# BEGINNINGS &



**A LOOK AT SOMA  
TANZANIA. IT ALL  
'PROPER' EDUCA  
PEOPLE, TO FREE  
"GUTTER EDUC  
APARTHEID. A L  
STEPS, ITS EDUCA  
LOOK TOWARD**

SOMAFCO is the school established by the African National Congress of South Africa in Tanzania. It is the product of a radical political response to the lack of education under Apartheid. The underlying moral and ideological rationale behind the school is that black students must not be "domesticated" in the way that is intended by Apartheid "gutter education", indeed an education designed "to fit the Bantu more effectively for their future occupations", namely to be unskilled labourers in South Africa. Apartheid means that black people must forever be oppressed and be tied to conditions of servitude, and significantly it is to this end that "Bantu education" is oriented.

In June 1976 the struggle against "Bantu Education" erupted in a massive black student revolt comparable to that of the "revolution" of 1968 in France and elsewhere. It began ostensibly as a youthful response to the Apartheid State's imposition of Afrikaans as a medium of instruction in black schools. "Afrikaans is oppressors' language", so ran a slogan of the black student insurgents. But the real issues were bigger; black youth was up in arms not only against specific aspects of "Bantu Education" but against Apartheid in all its manifestations. The Apartheid state however proved strong enough to lay low the revolt. In desperation hundreds of black youths turned their backs on Apartheid and sought out the liberation movement in exile for training as guerillas. Many of these eventually found a niche in an alternative, radical system of education: SOMAFCO.

What then precisely is SOMAFCO? What are its objectives? What are its tasks? And what has been achieved in the realisation of these objectives and tasks?

SOMAFCO refers to the Solomon Mahlangu Freedom College. It is mainly a high school, not just an ordinary school, but one conceived in the political practice of the national struggle against Apartheid. As such, it has both a symbolic and a material, concrete reality; symbolic, because it stands as a monument to an heroic ANC black student who gave his life to the fight for liberation in South Africa; Material and concrete, because architecturally and in terms of educational and vocational building projects, a rather huge complex has been built on land generously donated by the Tanzanian government in Mazimbu, Morogoro. Initially, the Tanzanian government set aside 3,500 acres of land; however, with the rapid growth of the school necessitating more land, it granted an additional 4,000 acres.

Work on the school began in late 1977 when a qualified ANC engineer and two European solidarity workers held a series of meetings to discuss the projected complex.

## HURCULEAN TASK

Simultaneously, ANC educationalists throughout the world started to formulate educational policy, prepare syllabi, recruit teachers, and so on. Shortly thereafter, preparations were made to renovate existing buildings in Mazimbu for accommodation workers, teachers and students and for running workshops, offices and classes.

Effective building operations began in early 1979 when the first foundations for Dormitory Unit 1 were laid. Slowly this structure became the nucleus for use as classrooms, the library, the principal's office, a staff preparation room, and student hostels. Meanwhile space for accommodating workers and teachers, for work shops, stores, a health clinic and an overall administrative office was found in renovated buildings.

Construction and production goals were set high, and where expertise was not available within the ANC ranks it was tapped from outside sources. Thus welders, electricians, carpenters, joiners, plumbers, architects, engineers, and so on were drawn from the ANC's own ranks as well as from solidarity workers from abroad. Financial assistance poured in from many sympathetic donors (governments, organisations, firms, individuals), and to say the least it is this assistance together with the energy of ANC cadres, and solidarity workers that has given the whole school its real dynamism.

Rapid, often improvised strides in building operations were made in 1980-1982. Dormitory Unit 1, consisting of student bedrooms, study or playrooms, a kitchen, a community hall, and laundry room, as well as four attached staff houses, saw their completion. Other, similar dormitory units either saw their foundations being laid or drew towards completion.

## THE VISION

All in all the target is to have six dormitory units, each with four attached staff houses, and each housing 144 students comfortably or about 250 students with some cramming. One block of eight large class rooms has been finished, and the beginnings of another block are



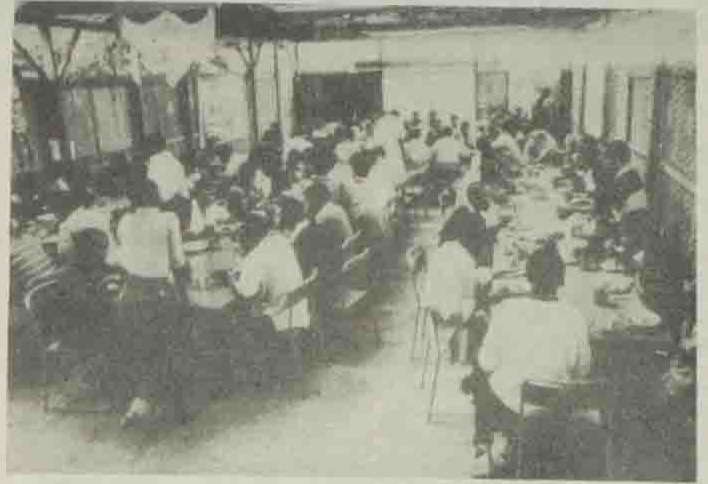
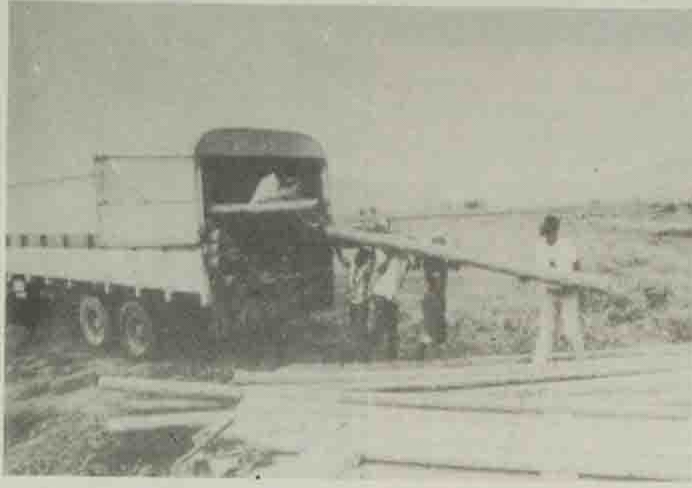
● A COMPLETED DORMITORY UNIT. CENTRE, STORE AND COMMUNITY HALL





# & THEIR ENDS

**SOMAFCO, A SCHOOL IN  
SOUTH AFRICA TO PROVIDE A  
SOLUTION FOR BLACK  
CHILDREN THEM FROM THE  
"APARTHEID" UNDER  
THE NEW GOVERNMENT.  
LOOK AT ITS FIRST  
YEAR OF OPERATION PLAN, AND A  
VIEW OF THE FUTURE.**



already evident. The building of well-equipped science laboratories is in the planning stage, but a basic photographic laboratory catering for local and wider political needs has been finished. A huge centre for vocational training in carpentry, bricklaying, electrical installation, motor mechanics, painting, tailoring, and plumbing is in the offing. Limited medical aid and relief is possible in the existing clinic, but tentative plans for a hospital and health service depots have

already been drawn. Nurse and primary schools for use by the Children of the resident ANC community have been set up in renovated buildings. Day-care centres and creches for babies and infants exist, but are presently situated outside Mazimbu in the residential areas of Morogoro. Finally, production units for vegetables, fruits, poultry and livestock have been established. Although these are manned and managed adequately, students are encouraged to spend some of their time daily in agricultural work. It is expected that these production units would make the resident ANC community self-sufficient in the long term.

## THE RANGE

At SOMAFSCO teaching and learning are seen as a dialectical, two-way process; students learn just as much as teachers learn in the educational situation.

There is often a conscious application of newer, radical methods of pedagogy, and the acquisition of basic political knowledge by students is considered to be essential. Much emphasis is placed on the ideological character of the social sciences and on the role of the educated man or woman in society. In the end, education is seen as one more dimension of the struggle for liberation. As expressed in the words of one student, "Properly educated, I feel more equipped intellectually and theoretically to fight for the liberation and advancement of my people".

Non-Curricular activities for students cover a wide spectrum. Notable amongst these are the following; debating and seminar student groups, which exchange political ideas with Tanzanian and other African students; cultural groups, including a choir, which has won international acclaim for their performances; and sports and indoor games' groups, which show admirable progress in spite of limita-

tions, like a shortage of sporting equipment.

The school does not control the influx of students, nor does it select those who are admitted. The choice is made by other agencies, such as regional or refugee committees in the front line states, and by the Education Department of the ANC.

Students finishing their schooling at SOMAFSCO, or sometimes even before doing so, are sent on scholarships to receive higher education in the West and the socialist countries. So far the ANC has been able to negotiate successfully with governments, organizations and unions to see these students through financially and otherwise. Special consideration and even sympathy appears to be afforded in this respect, and perhaps international opinion and conscience is indeed touched by the perseverance of struggling people refusing Apartheid "gutter education" and seeking the development of their natural intellectual and educational potentialities to the full.

## OBSTACLES

Much, due to limitations of space here, has been left out. Essential to mention in closing, however, are the main difficulties faced in the realisation of projected objectives and tasks. Funds are always limited and sometimes critically restrictive in the execution of plans. There has always been a shortage in teaching staff. Partly this was due to admitting hitherto only ANC teachers, but this has been altered to allow for the recruitment of salaried volunteers who show an interest or a commitment to the national liberation politics. There is a perennial shortage of teaching aids and materials, as well as stationery and textbooks, and prospects for remedying this situation appear still bleak. Only the goodwill of all of the world's peoples can be counted upon, and it is hoped that anyone who wants to help or to simply elicit more information should approach the Anti-Apartheid Society at Leeds University.

**REPORT  
BY  
SALIM  
ESSOP**

## NOTICE

A one-day photographic exhibition and a talk on SOMAFSCO have been arranged to take place at Leeds University towards the end of November. The relevant venues and times will be published in Feedback and on posters soon.



● MEETING BETWEEN STUDENTS & SERETSE CHOABI, DIRECTOR OF A.N.C.



★ Arts ★ Arts ★ Arts ★ Arts ★ Arts ★ Arts ★ Arts ★ Arts ★ Arts ★ Arts

# Lizzy on the loose

**Thin Lizzy**  
Queens Hall

The main headache for a band playing the Queens Hall is, as everyone knows, the acoustics. In the past too many concerts have been ruined by the awful acoustics and the total lack of warmth of the place. Thursday night, however, was an exception, being one of the best and most enjoyable rock concerts I've seen in a long time.

The support band, **Sweet Savage**, provided the audience with three quarters of an hour of hard, driving rock. Unfortunately, by the time they reached the last number, the crowd showed signs of boredom and began chanting for **Thin Lizzy**. However, for a relatively new band, their stage presence before a capacity audience was quite amazing, and

I don't think the time is too far off when they'll be heading the bill, if not at the Queens Hall.

As the hall lights dimmed for **Thin Lizzy** the applause was deafening. As the band took the stage, they broke into the title track from their latest album, 'Renegade', due for release next week. After two more appetizers from the new album, it was basically a greatest hits show, running through early hits such as 'Boys Are Back In Town' to the most recent hits such as the controversial 'Killer On The Loose'.

**Thin Lizzy** are easily the most choreographed band I've ever seen. Phil Lynott, Scott Gorham and new member Snowy White (ex Pink Floyd session man) have their top of the P.A. jumps timed to the split second for maximum effect. Snowy

White, unlike the domineering Gary Moore, is flash to suit the band rather than to upstage.

Darren Wharton tinkling on an unobtrusive keyboard added an extra element to the sound and was especially effective on slow numbers such as 'Don't Believe A Word'. The massive lighting system and the use of dry ice and smoke bombs was also very effective and the combination of all three during the final encore of 'Rosalie' gave an explosive end to a first-rate concert.

The fact that **Thin Lizzy** sent the fans home all happy despite playing in such a place as the Queens Hall is proof of their sheer professionalism and the amazing rapport they had with the audience.

JON TAYLOR



**Altered Images**  
Poly, 19th November

If the audience was attracted to this gig because of the group's recent chart success 'Happy Birthday', they certainly couldn't complain, because that's what was served up, under various different names for almost an hour. It was difficult to assess whether the crowd was uninspired because of the music or whether their apathy had a detrimental effect on the band. At first it seemed that the lead singer, Claire, would at least offer some visual excitement but after a while her prancing, pouting and posturing became decidedly nauseating.

The performance was redeemed to some extent by the final number, 'Incense', which showed some attempt toward experimenting with a strangely Oriental sound. If the group could resist the temptation to play safe they might be met with a more enthusiastic response.

# Miller on the make

**Steve Miller**  
Circle of Love

Miller is a man who in recent years has been much-maligned, not to say ignored, by the British music press. Adjectives such as bland, pretentious and self-indulgent have all been used to describe the man's music and attitudes. He has been seen as a manifestation of easy-going America, wrapped up in its own cosy dream of a world consisting of trouble-free romance and social myopia.

It would be all too easy just to repeat the cliched criticisms of the American music scene, and dismiss it as worthless, but I decided to put aside these preconceptions (we are honoured - Arts Ed) and judge the album for what it is; namely a collection of songs designed to give pleasure to the listener.

**Circle of Love** is American soft rock at its most palatable. Side One kicks off with **Heart Like A Wheel**,

an up-tempo song and presumably a tribute to Eddie Cochran. The bass riff blends with Miller's own jangly guitar playing and steady mellow vocals to produce a very commercial song, memorable for the sheer sense of enjoyment it conveys.

The next track, **Get On Home**, combines a girly backing refrain with a rousing chorus and eccentric keyboard breaks, to produce an endearing little ditty, marred only by the lyrics, which verge on the deplorable. They lead me to suggest that Steve Miller either has his tongue firmly embedded in his cheek, or erroneously employed Andy Pandy's scriptwriter as lyricist - I am inclined to believe the former explanation.

The title track, **Circle of Love**, is an outstanding composition. It possesses the distinctive atmospheric quality of Miller's **Fly Like An Eagle** and the commercial irresistibility of **The Joker**. It simply exudes class,

mood and virtuosity. A strong opening harmony, evocative of the very best Beach Boys material is superseded by the meandering and wistful guitar playing of Steve Miller.

Side Two is wholly devoted to one track, **Macho City**, which lasts eighteen minutes, a playing time which smacks of the orchestral self-indulgence of Genesis and E.L.P. The opening five minutes or so reveal a Steve Miller approaching tentative social awareness with references to El Salvador and Afghanistan, and claims that 'macho man's heading for a big fall'.

**Circle of Love** is one of those albums you play after a gruelling day at college, when your strength has been sapped by one lecture too many and the pubs don't open for another hour. It is relaxing, tasteful, and has class stamped all over it.  
RAY O'SHAUGHNESSY

# Cinema

**Enter the Ninja**  
Odeon

In my last review of a martial arts film, sadly rejected, I commented on "Were Shogun Assassin a better film, it would be dreadful", "Enter the Ninja" is a better film.

It concerns the ancient Japanese art of Ninjutsu, the ultimate in martial arts.

We begin with the good guy, Cole (Franco Nero) dressed in white being pursued by the gad guy

Hasegawa (Sho Kosugi) who is conveniently dressed in black. Helping in the pursuit are thousands of men in red, all of whom are master of the ancient art of falling out of trees and getting killed.

Needless to say, our hero in white (for it is he) wins hands down (or off) and is appointed supreme of ninja. In a remarkable display of xenophobia, the Black Ninja minutes his dissent, and a plot line is left hanging.

Abruptly we find ourselves on a coconut plantation in Manila, where the White Ninja, now disguised as Steve Austin, arrives just in time to help Susan George.

She and her husband (an ex-army buddy of the White Ninja are being

victimised by bullyboys in the employ of a man known as the "Hook", who is in the employ of Mr. Venarius, who appears to be answerable only to God, and only if he feels like it. The White Ninja settles the thing by beating everyone up, until Mr. Venarius sends to Japan for his very own Ninja. Rather than spoil your enjoyment, I won't tell you who they import, but its not very hard to guess.

The fighting in the film is the only thing that saves it from disaster. I've seen demonstrations of Martial Arts, and this is very well done. The man who plays the White Ninja in the fight scenes in Mike Stone, the World Karate Champ, so its not really all that surprising. The rest of the film is utter drivel, heavily reminiscent of the very worst of the 60's films, with none of the compensating freshness and optimism.  
IAN BEDDOW

# The Black and White Ninja Show!



# LEEDS PLAYHOUSE

Calverley Street. Tel: 442111  
book also at University Union Record Shop

Finishes Saturday  
**THE OLD ORDER**  
- Stephen Bill

1 December - 9 January  
Flying Tortoise Children's Theatre

**FREDDIE SUPERFLEA**

16 December - 16 January  
**PIAF**

**FILM THEATRE**

Tonight at 11.15p.m.

**YANKEE DOODLE DANDY**  
(U)

Tuesday at 9.00p.m.

**THE UMBRELLAS OF CHERBOURG** (A)

Wednesday at 9pm

**HEARTLAND** (A)

Thursday at 9pm

**ODD MAN OUT**  
(A)

**JAZZ**

This Sunday at 12 noon in the bar

**BOPTET** 50p

Sun 6 December 12 noon

**GORDON BECK'S EUROPEAN QUARTET**

Students £2.00

# Austicks for books

**CHRISTMAS BOOK FAIR**

NOW ON AT THE

**ARCHWAY BOOKSHOP**

12 Great George Street

**UNICEF CHRISTMAS CARDS**

ON SALE AT

64 THE HEADROW ■ 25 COOKRIDGE ST ■ 21 BLENHEIM TERR.



★ Arts ★ Arts ★ Arts ★ Arts ★ Arts ★ Arts ★ Arts ★ Arts ★ Arts ★ Arts

## Drama

## A sharp intake of Brecht?

## Whose Life Is It Anyway?

## Bradford Playhouse

Brian Clark's play 'Whose Life Is It Anyway?' explores the issues of life and death with sensitivity and ironic black humour. The main character Ken Harrison (played by Peter Hall) is paralysed from the neck down and feels he has a choice between suicide or a 'life sentence' imprisoned in a body which renders his clever and articulate mind practically useless. He defends his right to choose, which he feels is essential in order to retain his human dignity. When told he is to be transferred to another hospital he comments with wry humour: 'Is this the place where you grow the vegetables, you store them somewhere else do you?'

The drama draws to a climax with a tribunal to decide whether Ken is sane enough to choose between life and death. He argues convincingly: 'If I choose to live it would be appalling if society killed me. If I choose to die, it is equally appalling if society keeps me alive.' Eventually Ken wins his battle against bureaucracy and the moral qualms of the hospital authorities and is allowed to die with dignity.

Peter Hall's portrayal of Ken was both subtle, skillful and convincing, presenting a bitter, desperate man in one scene and a witty, flippant character in the next. Unfortunately some of the supporting cast failed to match up to the standard he set, although there were good performances from Penny Carlisle as Dr. Scott and Ken Greenwood as the hospital psychiatrist.

KAREN BUTTERWORTH

## Tryad Theatre

is a new Leeds based theatre company formed in the summer of 1981.

They will shortly be touring with their production of Barry Collins play 'Judgement'.

The group was set up with the idea of working on projects which rely on their own skills and which can be performed almost anywhere with the minimum of setting up.

'Judgement' is based on an incident at the end of the second World War. A number of captured Russian Officers were left locked in an abandoned Polish monastery; only two of them survived, having killed and devoured the others.

When the advancing Red Army found them, both officers were crazed by the experience.

Collins' play is a reimagining of the events based on the premise that one of the survivors, Vukhov, was sane and able to present his defence to his judges, the audience.

Tyrad as the name implies has three founder members, Tim David, Richard Haswell and Nick Wyatt who share a wide range of experience having still had time, while preparing 'Judgement', to run successful workshops which have proved useful to students who are involved in theatre work.

They are performing on 2nd, 3rd, and 4th of December at the Workshop Theatre beginning at 7.30. Admission is 80 pence.

Do go along.

## Workshop Theatre Scenes based on Bertolt Brecht's The Caucasian Chalk Circle

No play by Brecht or based on Brecht can ever be described as entertainment in the music hall sense of the word. It can be entertaining but it is entertainment with a didactic intention, and Brecht employs methods of alienation so that we are not allowed to forget this.

And so, at the Workshop Theatre last week, the audience found themselves seated in a circle around a bare stage, with the actors and actresses seated amongst them and looking no different to anyone else.

The action began with a scene based on the prologue to Brecht's play where the 'wine people' the 'goat people' and 'the government' discuss - or rather, argue about - who can use a certain valley to its

best advantage. On the second day (Friday) this was omitted from the performance because, I was told, they felt it hadn't worked. As a spectator I felt it had worked and had added to the overall impact of the production. However, the scene which constituted the main part of the action, proved to be just as effective on its own.

The 'story' around the action tells how a servant girl, Grusha, saves the baby son of her mistress, who has deserted him on the outbreak of the war. Grusha risks everything for the child and even marries a peasant to give it name and status. When the war ends the wealthy mother sues for the child's return, simply for the sake of the family estates. The

good-bad judge, Azdak, tries the case and settles it by reversing the old test of the Chalk Circle. The child is supposed to go to whoever can pull it out of the circle, but Grusha cannot bear the thought of tearing him to pieces and doesn't pull at all. The judge recognises her maternal instincts and gives the child to Grusha, at the same time as granting her a divorce, so that she can return to her soldier fiance. The final moral is that both child and valley should go to whoever serves them best.

What was so interesting about this production was that there were no set roles: 16 people were involved in all, and they swapped characters at regular intervals, so

that the part of Grusha was in fact played by five different actresses. In performing the scenes in this way the members of the Workshop Theatre were given good opportunity to display their remarkable acting skills as they slipped from one character to another - from grumpy old man to nagging housewife, to give just one example and the result was a lively and convincing production.

This kind of 'Co-operative' acting lends itself very well to Brecht; we, the audience, are not allowed to identify too closely with the characters involved and are left, instead, to concentrate on the dialogue and the message conveyed through it.

ROZ HANNA



Good-day punters. Has the weather not been remarkably bad of late?

It's remarkably difficult to do a bit of honest posing in Leeds in the winter. You can't be a boy about town when it's too cold to venture past the front door without several layers of clothes. I mean it's not really on strutting around with you nose turning a deep shade of red and your quiff dripping with sleet, is it?

All this is by way of explanation for the fact that I have been firmly ensconced in the surrogate-womb warmth of the Dare residence for the entire week and thus am somewhat short of ammunition for this week's column; which of course puts me in a heart-wrenchingly difficult situation. I mean how could I dissappoint the legions of young hipsters who undergo the unbelievable embarrassment of being seen with a copy of this turgid comic for the sole purpose of absorbing my sparkling wit and dazzling insights.

I could, of course give you a guide to the up-and-coming events but the truth is that, with a few exceptions, the entertainment prospects are as bleak as the long-range weather forecast. One burst of excitement should certainly be provided by the remarkably swift return of Vic Godard and the Subway Sect to the Warehouse (this

Monday) - on his last visit to this fair city, with the Club Left (reviewed in these pages a few weeks ago), Vic provided a recreation of the vintage period of swinging and torch singing which positively oozed with style - not that a repeat performance should be expected, Mr. Goddard has always been too much of a maverick to consider presenting re-runs of successful formulas and given the hastiness of his return I have no doubt that he has something up his sleeve, and I certainly intend to be there to find out what it is.

Apart from this, however, there appears to be little to tempt one to brave the elements and venture beyond the warmth of the living room - which might not be so bad were it not for the fact that the BBC have decided to devote interminable hours of air-space to a lively representation of the spirit of rock and roll, yes that eternal wild hedonist, that disciple of danger and excitement, the man from whom the upholders of the values of normality and conservatism recoil in terror, the man who fronted the outrageous band who changed the face of music with daring and defiant razor slashes. Yes I speak of none other than (pause while aged grandmothers clutch at their failing hearts in utter revulsion at the very mention of this name) - the man so rightly called a rock and roll juvenile (Oh get on with it for God's sake - Arts Ed.) .....Cliff Richard.

I can only hope that this sickening self-righteous wimp continues his apparently endless existence (very likely considering his appalling clean-living habits) after all life would be utterly intolerable if he were ever to give in and croak it. Just imagine it, Summer Holiday

from morning to night, all those unbearably obsequious tributes, his entire back catalogue making showings in the charts. You thought the death of that obese cheeseburger fanatic, whose name I can't quite remember at the moment, was bad - well brother that would be nothing to our Cliff booting the bucket.

Mind you there seems to be a conspiracy around here to prove that blands have more fun - not only do we have to put up with people

pretending that Cliff Richard has done anything of any remote significance in his entire life, we also have professional Cockney Tommy Steele putting in his tooth dominated face at the Grand. Mind you, as someone is bound to remind me before long, he'll be giving the audience what they want - excuse me while I return to hibernation.

See you next week (If I get up by then)

DON DARE

## Jansch Preview:

If you haven't heard of Bert Jansch then you have been missing out and I can only recommend that you go along to the University Union, Riley Smith Hall on Thursday 3rd at 7.30 pm and treat yourself.

An influential musician in the folk field for many years, Bert began playing in his teens in Edinburgh. After climbing the folk ladder he formed 'Pentangle' with John Renbourne. In league with others they rose to international renown producing albums called 'Rosemary Lane' and 'Moonshine'. In 1972 after the demise of the band, Bert retired to Wales, producing two more albums over the period leading up to the formation of 'Conundrum' with Martin Jenkins at the end of the decade. They recorded

'Avocet' and 'Thirteen Down' together and have toured the world as the central figures in 'Conundrum'.

Their range of musical instruments is notably varied. Mandocello, flute and fiddle-playing number amongst Jenkins' talents but his vocal harmonies stand out, as the perfect foil to Bert's more down-to-earth style.

They play both traditional and contemporary music, their emphasis lies with acoustic instruments, but everything they do is interpreted in their unique style.

Don't be duped into thinking they are a bunch of 'Old Folkies' in the usual sense for they are anything but that.

CHRIS SPRINGHAM

CINDERELLAS  
ROCKERTHELLAS

Merrion Way, Leeds LS2 8BT

A superb club now available  
for Free Private HireIdeal for Students Parties, Birthday Parties,  
Charity Events, etc.

Available every Sunday, Monday and Tuesday

Special free Introductory Offer.

Interested? We think you will be.

Ring Sandra 440704 for details.

(Plus free admission to all Students every  
Monday and Tuesday upon production of  
Students Union Card).

## OXLEY

## CHRISTMAS BALL

Friday, 4th December 9.00pm-3.00am

## SLOW TWITCH FIBRES

## The Aurora Disco

Buffet

DOUBLE TICKET-£10

Late Bar

## Leeds Cosmo Club

58/62 Francis St. Leeds 7

The Student's Choice

For A Good Night Out

Mon to Sat 9.30-2.00am Sundays 9.30-Midnight



# t • Sport • Sport • Sport • Sport • Sport • S

## women's victory

### WOMEN'S HOCKEY

Despite a well deserved 2-1 victory over Bradford, the 1st XI has to await the result of the match between Sheffield and Nottingham before they know whether they will qualify for the U.A.U. quarter finals.

Whatever the outcome the game on Saturday revealed a fighting spirit perhaps lacking in previous games. Having gone a goal ahead early in the match, through Pamela Jones, it looked as though Leeds might romp home. Then a surprise equaliser temporarily dampened their spirits and consequently they had to wait until the very end

of the match before they could press home their advantage. Reduced to ten players due to an injury to the captain, the long awaited goal finally came when Gill Kehoe latched on to a cross from the right to score from close range. There were no such worries for the 2nd XI. Sure of qualification even before the game they took the field in a very relaxed frame of mind and three excellent goals scored by Paula Morris, Paula Winder and Sue Mitchell ensured their entry into the quarter finals, having come top of their group in the Round Robin Section.

## firsts come second

### Men's Hockey Welton 0

#### Leeds University 2nd XI 1

On Saturday, the 2nd XI returned from Welton after a deserving win of 1-0. With only half the normal strength, the team settled down after some ten minutes, Damian penetrating the Welton defence to score.

On several occasions, Welton looked threatening, however some fine play by Smith, the goalkeeper who also made a good save from a penalty, kept the attack at bay. In the midfield, Amijee, Broxup and Berkmount played a constructive game, using Foord on the wing whose pace gave Leeds

ample chances to score; however they lacked the final finishing.

#### Leeds University 1st XI 0 Farsley 2

On Saturday, the 1st XI played Farsley at Weetwood in the Yorkshire League. In a closely contested game, Leeds had spells of good, fighting play, but they were always susceptible to fast breaks, one of which led to the first goal. In the last few minutes of the second-half, Farsley gained a penalty flick, which was well converted, in the ensuring controversy. Wheatley was sent off for dissent.

## poly men on top

### MEN'S HOCKEY NEWCASTLE POLY 1 LEEDS POLY 3

It was obvious from the way Leeds started their match that the previous weeks coaching from National Coach Trevor Clarke had been of great assistance with a far more disciplined approach coming from the team.

The Leeds poly midfield of Eggleston Clay and Tucker took immediate control of the game with both Sharks and Hamial being used to great effect on the wings. Indeed it was from the right wing that Leeds won their first corner of the game. However they failed to take advantage of this, with the Newcastle defence looking fairly solid. The match developed into one of the best Leeds have played this season with Newcastle having obvious potential to be a strong force in the B.P.S.A. Competition. However, although Parr, the Leeds keeper, was called upon to make some good saves during the first half, the Poly



came out on top, but unable to have anything to show for it on the score sheet at half-time.

The second half saw Leeds Poly anxious to break the dead lock, and it was not long in coming. With Hamilton latching on a clearance from defence he was able to cross it from the right-wing for Eggleston to hit a blistering shot past the Newcastle keeper only to strike the post; but with opportunist Shanks to flick into the net from the rebound, Leeds went 1-0 up. Newcastle then responded with some pressure on the Poly defence and were rewarded with an equalising penalty flick. Leeds then stormed back to regain the lead, and went

ahead when Hamilton gained possession on the halfway line and managed to push past the keeper to put his side 2-1 up again. Although Newcastle won several short corners, the Leeds defence of Dennis, Farrow, and Jim, held steady with Parr making two fine saves from short corners indeed, Leeds put the result out of doubt when from a goalmouth scramble Hamilton pushed an easy third goal into the net.

With a good team spirit and an ability to play hockey of a high standard, the Leeds' Poly side can certainly go on to be B.P.S.A. champions, as long as they work hard and build on their achievements so far.

## university thirds score three

### Hockey Leeds University 3rd XI 3 Bardsey 3rd XI 1

The Hockey Club's most success-XI fought their way to yet another victory at Weetwood on Saturday.

A make-shift Leeds team settled down more quickly than the visitors on a heavy pitch, and underlined their superiority with three first-

half goals from Clague and debutantes Perkins and Beasley.

Bardsey fought back well in the second-half but solid work in defence by Isherwood, Davies and McCartney, backed up by some useful goal-keeping by Choudhury, restricted the visitors' attack to a single goal.

The last few minutes found

the Leeds team pushing forward again, having weathered the storm, and Hargreaves was unlucky to trip over his own feet with an open goal gaping before him.

This victory brings the 3rd XI's goal tally to 48 in ten games played so far this season.

BRIAN THOMPSON.

# LEEDS UNIVERSITY UNION

- 3 SEATS ON UNION COUNCIL
- 12 SEATS ON DISCIPLINARY TRIBUNAL
- 7 SEATS ON DISCIPLINARY TRIBUNAL APPEALS CTTEE
- 1 STUDENT MEMBER OF SENATE
- 2 STUDENT MEMBERS OF UNIVERSITY COUNCIL
- 1 STUDENT MEMBER OF ACADEMIC CTTEE

Notice is hereby given that the candidates listed below have been nominated for the above elections.

UNION BUILDING FOYER - 10.00am - 7.00pm on BOTH days for all other students and for Health Students and Engineering and Houldsworth School students outside the times shown above.

Members who are unable to vote at the times stated may make personal application to the Returning Officer, before the close of poll.

Voting will be by means of a stamp on the current Union Card and will be in accordance with the Constitution and Bye Laws.

Please note that a student will be permitted a vote only if he carries a current Registration Certificate/Union Card.

THE ATTENTION OF THE CANDIDATES, PROPOSERS, SECONDEES, AGENTS, SUPPORTERS AND ALL OTHER UNION MEMBERS IS DRAWN TO THE CONSTITUTION (Cap IV, p7, Chap VII 10 (f)) wonder if anyone reads this bit (v), p16 of the Constitution Handbook) AND BYE LAWS (Section VII, p37).

(Sgd) STEVE BROWN  
Returning Officer  
25th November 1981

### UNION COUNCIL (1 seat)

AHMED, Talal  
BARRETT, Anthony C  
CONINGHAM, Helena  
EARNSHAW, Paul G  
GLICKMAN, Gary  
HILL, Paul  
HIPSON, Mark  
JAMES, John F  
KNOWLES, Hugh  
LANGFORD, Stephen Mark  
McAFEE, Peter  
MINSHULL, Robert G  
SARAKI, Okunide  
WINTER, Christine M

Proposer  
Proctor, Andrea C  
Graham, Andrew J  
Mehboob, Ishrat  
Sowery, Alison  
Goswell, Elaine D  
Murtagh, James  
Murtagh, James  
Lane, Stephen  
Graham, Andrew J  
Harland, Richard W  
Grundy, David A  
Erskine, John L H  
Patterson, Andrew J  
Cassidy, Mary B

Secunder  
Gillen, Seamus J  
Bispin, Malcolm  
Neville, Alaric  
Conningham, Helena  
Erskine, John L H  
Leong, Sek Onn  
Watts, Colin A  
Goswell, Elaine D  
Lane, Stephen  
Johnson, Kathryn  
Patterson, Stephen  
Lebor, Adam  
Murtagh, James  
Gillen, Seamus J

### DISCIPLINARY TRIBUNAL (12 seats)

As there were only ten nominations received for this election, the following are hereby declared elected.

GEOFFREY DUNN

LYNNE GURNEY

MARCUS KILLICK

PHILIP WEBB

ANDREW GRAHAM  
JOHN JAMES  
KEITH PATTEN

STEPHEN GRATTON  
MARK JOULTON  
BRIDGET SHALLCROSS

### DISCIPLINARY TRIBUNAL APPEALS COMMITTEE (7 seats)

As only two nominations received for this election, the following candidates are duly elected.

IAN CHAPLIN

PETER WHITELEY

### SENATE (1 seat)

As there was only one nomination received for this election, the following candidate is duly elected.

FIONA CAREY WOOD

### UNIVERSITY COUNCIL (2 seats)

GOLIGHTLY, Ian  
LANE, Stephen  
WALTERS, Gordon M L

Mularczyk, Christopher  
Goswell, Elaine D  
Kershaw, Andrew J G

Coppack, Jeremy John  
Newman, Gill  
Graham, Andrew J

### ACADEMIC COMMITTEE (1 seat)

As there was only one nomination received for this post, the following candidate is hereby declared elected.

IAN CHAPLIN

POLLING for UNION COUNCIL and UNIVERSITY COUNCIL elections will take place on Monday, 30th November and Tuesday 1st December 1981 at the following polling stations at the times stated:-  
HOULDWORTH SCHOOL FOYER - 12 noon - 2pm on TUESDAY, 1st DECEMBER ONLY, for Engineering and Houldsworth School Students only  
LEVEL 7, NEW MEDICAL SCHOOL - 12 noon - 2pm on MONDAY, 30th NOVEMBER ONLY, for Health Students only.

## MANDATES

**TALATAHMED:** Reason for standing: Need for changes in the organisation and structure of certain bureaucratic bodies to revitalise interest and participation in union politics. We must oppose: cuts and loan scheme; apartheid and recruitment; military research on campus; violation of human rights.

**STEPHEN LANGFORD:** If I am elected onto Union Council I will try to represent you the Student. It is your Union and as such I believe that more people should be encouraged to voice their opinion so that the Union policy is truly representative of the majority of student views.

**HELENA CONINGHAM:** In the past year I've been active in C.N.D., A.N.L., and 3rd World societies because I believe these are the most important issues at the moment. Students can no longer pretend to be an isolated group; events in society do affect us; have there been any cuts in your department?

**JOHN JAMES:** For a person who puts students first and believes in moderation and common sense.

**MARY CASSIDY:** My main issues are: Women's Minibus. The University must guarantee a percentage of the costs for the future. Cuts. Students and staff must fight together to save education. Female representation is too small at all levels of Union administration.

**PAUL EARNSHAW:** Member: Socialist Worker Student Organisation. Member: C.N.D. Society. Delegate to Student C.N.D. Conference 1981. Member: Students Against Nazis Society. Delegate to NUS Conference 1981. Elect me to Union Council as an activist with Socialist politics.

**PETER McAFEE:** I'm standing for Union Council because I believe U.C. contains too many left-wing extremists. I will campaign 1. against IRA sympathisers; 2. for fairer grants; 3. for pro-capital punishment policies. For a democratic Union fight the left.

**ROB MINSHULL:** The candidate believes in constructive opposition to the present government's expenditure cuts and is also a supporter of C.N.D. I am totally opposed to sexism and racism in any form, both in and outside of the university. I am Vice-Chairperson of L.U.U. Labour Club.

**PAUL HILL:** I firmly believe that students cannot isolate themselves from community issues. As ACTION Co-ordinator I have experience of working in the community, and understand many of the problems of deprivation facing certain sections of the local population. Vote for somebody who doesn't just believe in justice, but works for it!

**MARK HIPSON:** Education - only active campaigning will save grants from further cuts which the govt has proposed. Minibus service - The university is trying to withdraw support for the Minibus. We must be prepared to meet this threat. Amnesty International: Support human rights and oppose detention and torture of prisoners of conscience.

### UNIVERSITY COUNCIL:

**IAN GOLIGHTLY:** Did you every think you views were not being represented? Did you know there were plans afoot to shift money away from sports and societies? Did you often wonder why the Union Fights on so many issues? and succeeds in so few? Or didn't you care?

**GORDON WALTERS:** I have been involved with the Union, and the University for two years, and I believe that my experience, and proven commitment is invaluable for this important post.



## Sport • Sport • Sport • Sport • Sport • Sport

## COLD DRAW

Football  
Academicals 2  
Leeds University Reserves 2

Leeds University Reserves won a hard-earned point against Academicals at Adel last Saturday.

On a cold, bleak afternoon, both sides ploughed courageously through four inches of mud to draw eventually 2-2.

This match, despite the condition, was superior to their previous meeting this season, aided by some astute refereeing. Academicals, physically stronger and more experienced, rocked the Reserves with a series of early bursts in which their big centre forward was prominent. The Reserves' defence of Smith, Moglia, Marsh and Foster held fast for 30 minutes and then gradually Leeds began to take command. Playing with four in midfield, the task of the Reserves' attackers Atherton and Fanning was not an easy one for much of the first period, but to their credit they persevered. After 35 minutes Leeds took the lead when an Aspinal corner was turned into his own goal by an Academicals player. For the rest of the half, the Reserves kept their opponents hemmed in and despite an overall lack of chances, Leeds deserved to begin the second-half one up.

As so often happens, the Reserves relaxed in the opening ten minutes of the second half.

Within five minutes two corner kicks led directly to goals for the opposition. The first was scored by the centre-back with an unstoppable header. The second was a shot from the edge of the area after a weak defensive clearance from the corner kick. At 1-2 down after an hour's play, Leeds seemed likely to capitulate for Academicals showed by the ferocity of their tackling that it would require much determination from the students to dislodge them.

In the event, Leeds provided their best football of the season in the last 30 minutes. Repeatedly Aspinal and Faulkner crashed through fierce tackles to make ground. Moglia's play on the left provided Leeds with a springboard for countless attacks, the Reserves' equaliser coming from one such attack. A cross from Moglia was handled on the six-yard box by a defender, but even as Leeds appealed for a penalty, Fanning sent the loose ball home. At 2-2 the students were now confident enough to go for the winner, but despite strong shots by Atherton and Keogh they could not find the net.

STEVE QUILTY.

## ENCOURAGING WINS

## Football

After a promising start to the season the University 1st slipped into a series of draws and throw away defeats which were blamed on a lack of finishing and lapses of concentration in defence. The past three games have seen an encouraging improvement with a 3-0 home win against Hull a 1-1 draw against Bradford, and on Saturday, a 6-3 away win against Manchester Poly.

In the mid-week U.A.U. game versus Bradford, the university opened the scoring with a well taken goal by Large but Bradford equalised soon after with a goal due to poor defensive marking. Leeds should have capitalised on numerous chances open to them in the second half, but again finishing power let them down.

On Saturday, however, Manchester Poly were convincingly

beaten by six decisive goals. Four of them were well taken headers by Large, Conning, Gayle and Askew. Large scored his first goal with a superb chestdown and volley effort which the goalkeeper had no chance with. He battled hard to set up Lawton for Leeds' last goal. Conning and Ashew battled hard in midfield and fresher Gayle had a promising debut.

Under Chris Rigby's determined Captaincy and with the sort of aggressive finishing shown on Saturday, the 1st XI could make a stronger challenge on the N.U.L. in the second half of the season.



## SPIRITED DEFENCE NOT ENOUGH

Rugby  
Morley 30

## Leeds University 6

The University gave one of their most spirited displays for years last Saturday against crack Northern side Morley.

Although the final scoreline might suggest otherwise, Leeds played some attractive rugby and in the end it was the sheer physical superiority of the huge Morley pack that told. Indeed, Leeds had to concede three push-over tries. Without a doubt the most impressive aspect of Leeds' play was the consistently first-rate tackling. Centres Batey and Gibbons effectively closed down the

mid-field whilst breakaway forwards Eley, Rubin and captain Fandley covered superbly.

In the first half Leeds conceded only the one push-over try and were unlucky not to score when Stanton made an incisive blind-side break but could not quite get the final pass to winger Joyce. Two penalties by Scotter for Morley put the score at 10-0 at half-time.

In the second-half it was inevitable that the Morley pack was going to war down the University forwards but despite their fatigue they refused to give in and were eventually rewarded with a fine try.

Fittingly, this was scored by man-of-the-match, scrum-half Thomas whose cover tackling during the whole of the game was excellent. From a run by Joyce the ball was switched inside to Gibbons whose speed took him to the full-back; an inside pass to Rubin was followed by a kick to the line and 'Henry' claimed the try. Lyall's conversion completed the Leeds' scoring.

If the spirit that the side showed on Saturday can be maintained throughout the rest of the season they can start to chalk up a few more victories.

The second half saw something of a revival by the Heaton Mersey side and they won a greater share of ball possession, than in the first half. However, they were well-contained by an organised Leeds defence and therefore only managed to add two goals to their first-half score. Leeds continued to score steadily to increase their score to 19, the goals being scored prominently by attack players.

## SLIDING AHEAD

## Ski-ing

The University ski race team has participated in two dry slope races this term in preparation for the English and Welsh Universities' Ski Championships in Flaine, France at the end of term. The first was the E.W.U.'s Dry Slope Championship at Gloucester on Sunday 8th November. The meeting, organised by the University club was attended by fifteen universities with a total of twenty men's teams and six ladies' teams. With five skiers in each team the three best individual aggregate times are added together to make the team time. The men's first team were placed third overall behind Swansea and Loughborough due to good individual performances by Jeremy Nash and Mark Reed. The ladies' team sur-

passed this by winning their event with Janet Heywood and Maria Liancola coming seventh and eighth respectively in the Ladies' Individual event and Sue Rea also doing well. In the dual slalom, the Leeds' 3rd team reached the semi final only to be narrowly beaten by Bangor.

On Thursday 19th November, the University team also competed in the Yorkshire Championships held at Harrogate. The first team again skied well and were placed second overall, Nash producing a good individual time. Spirited performances were also given by Gregory Mutch, Robert Moore and Hugh Knowles which is an encouraging sign for the championships coming up soon in Flaine.

JAMES HOOKE.

## TEN PIN BOWLING

## Sheffield Singles Tournament

Leeds Poly sent five players to Sheffield on Saturday and had a very successful tournament.

Ladies team captain, Nikki Bruce, gave a brilliant display

of bowling skills to take the Winner's Trophy in the Ladies Section of this annual tournament. In the six games she played in the first round group she had a total pin fall of 1002, average 167

per game and in the three game semi-final she had another good series of 494 and in total averaged 7 pins per game over 2 games, an outstanding performance.

In the Men's Section Peter Gaffikin also bowled well taking a Group Winner's Trophy by beating all six opponents in his first round group, average 73 per game, but went out in the semi-final.

## Nottingham Doubles Tournament

The Poly sent three teams to Nottingham and all bowled well, but only Lol Wiles and Andrew Lam managed to get through to the semi-final, and although they lost there, they picked up a Group Winner's Trophy each.

Other bowlers taking part were Paul Benson and Chris Kelly and Paul Greaves and Peter Gaffikin.

## LEEDS ROBBED

## Golf

Leeds University 3  
Sheffield University 3

On a cold, wet day at Lindwick Golf Club, the Leeds team were unlucky just to come away with a draw.

After the first four matches Leeds were 3 matches to 1 ahead after some very solid performances by Philip Hemsted, Stuart Lund, and Paul Bannister. Hemsted found some of his best skills to out-class his arrogant Sheffield opponent and run out an

easy winner 5-4. Lund had a very impressive win against Ralph Brindle, previously unbeaten for over two years. New boy Bannister got off to a flying start winning 5 of the first 6 holes and then steadied himself to win 3 and 2.

Leeds narrowly lost the last two matches, so enabling Sheffield to scrape a draw.

The point gained from this match almost ensures that Leeds has qualified for the knockout stages.

## LACROSSE

Heaton Mersey 3  
Leeds University 19

A convincing win by Leeds against one of the few teams to take 4 points from the University last season.

The first half was totally dominated by Leeds with the midfield putting in a lot of hard work to win possession. The Leeds attack took full advantage of this and scored some well-earned goals, and although the Mersey attack rarely looked threatening, Leeds' defence was solid, with Bub in particular having an outstanding match. The result was 10-1 in the University's favour at half-time.

## LEEDS BOUNCE BACK

## Men's Basketball

The first round of the UAU's were held at Nottingham featuring a fourway tie between the universities of Nottingham, Bradford, Sheffield and Leeds.

Leeds' First team met Bradford first, taking the lead after an unsettled start, and going on to win 73-51, with Wilson scoring 23 points and Matias 16 points.

They then faced Sheffield and played more comfortably than in the first match, maintaining an early lead to win by 84-59.

On Sunday they played the deciding match against Nottingham. This game was unfortunately lost in the first 10 minutes, Nottingham using

fast-breaks and superior height advantage, and capitalising on the unsettled play by the Leeds team. At this point, Leeds began to pull back, but despite spirited attempts, the first team never realised their full potential, and lost the match 75-53.

Eventually finishing second in the tie, Leeds qualified for the next round of the UAU's and in the league maintained their unbeaten record by beating Sunblest 86-51.

**Your sport not covered?  
Hand your report into  
Leeds Student (Union  
Office) before 2.00p.m.  
Monday**



