

INSIDE...
Reading this through the bottom of a pint glass? Turn to the Centre Pages for the frightening truth.....
Happy Bonfire Night!

STUDENT IN CLIFF FALL

First year University student, Jim Thomas, 19, was dramatically rescued from a narrow ledge after falling 40 feet from a cliff face in Cheddar Gorge, Somerset, last Friday.

Geology student, Jim was climbing the Warlord Cliff Face in the Gorge when he fell down to the ledge, 250 feet up the cliff face, where he had started the climb. The fall fractured his skull, broke his jaw and left him concussed and unconscious.

Luckily his partner on the climb, ex-university student, Paul Clarke, 27 was close at hand and able to make Jim comfortable and tie him to the rocks for safety before going to get help.

"Paul came down as quick as he could to go for help," said Leeds University Climbing Club President, Nigel Birtwell, 23. "He couldn't get to the police station himself so he stopped some tourists in a car and wrote them a message for the police before he ran over to where Dave Turnbull and I were climbing further down the Gorge."

"Although we were already quite high up on our climb we managed to get down on one rope length and rushed to where Jim was as quickly as possible to see if we could help," he added.

"Whether he slipped or the rock broke away, we can't tell, but all the safety pieces he had put in the cliff face broke away.

Paul who was on the anchor rope didn't even feel any strain on it when Jim fell."

"Thankfully his fall was broken by some bushes and he landed on the ledge. He was lucky that Paul is such an experienced climber and knew exactly what to do," he continued.

The Mendip and Avon Mountain Rescue Teams were quickly on the scene. After rigging handrails on the narrow ledge for safety and clearing the bushes on the descent from the ledge to the floor of the gorge, they put Jim on an inflatable stretcher and lowered him to safety.

"The ambulance was waiting below and Jim was in hospital just two hours after his fall," added Nigel.

A spokesman for Weston-Super-Mare Hospital, where Jim was taken after his fall, said on Wednesday that he was quite comfortable and hoped to be discharged early next week.

"Jim is a very good climber. We're all glad he's going to be alright after such a dangerous fall," said Nigel Birtwell.

MARK LEONARD



Pic: Dave Moore.

Postgrad John Fox ran a blinder to win the Leeds marathon on the toughest course in Europe at the weekend. For more pics and report, see page three.

ELECTION RESULTS



Mark Clutterbuck
University Education Secretary
MARK CLUTTERBUCK
Union Council
DAVID GARTH
PETER McAFEE
Disciplinary Tribunal
ANNE HAWORTH
Leeds and West Yorkshire Area
NUS Council
MARY CASSIDY
PHILIP WEBB
JOHN ERSKINE
MICHAEL JAMES

NUS Conference delegation and observers

Mary Cassidy 1st Stage	Paul Davies 8th Count
Marcus Killick 1st Stage	Aileen McLoughlin 8th Count
John Erskine 1st Stage	Peter Whiteley 10th Count
Michael James 1st Stage	
Alison Wright 1st Stage	OBSERVERS
Mark Clutterbuck 2nd Stage	David Garth 11th Count
Cyril Cyril 4th Count	Mark Hipshon 11th Count
Ruty Ambalo 6th Count	Peter Scott 11th Count

NON-EVENTS

The row between the LUU Council and the Events Committee over payments to security staff erupted again this week, despite earlier reports that the issue had been resolved.

Paul Hill, the Union Deputy President, claimed that members of Events security staff had refused to "police" Thursday's University disco, as they were not being paid.

He reported that several stewards were present, but said that they were not willing to take any action in the event of trouble. Despite a crowd of almost 500 people, Mr. Hill was told that he would have to deal with any trouble himself, a prospect which he described as "chaotic and frightening."

Events, however, say this was not the case. The stewards they claim, had decided earlier in the week not to act as security on that particular night, as they believed they would not be paid. They were at the disco "purely as customers" and as a result the only executive member present, Paul Hill, had to assume control.

Fortunately, the evening passed without sight of trouble, but the incident has added fuel to an already heated argument.

The debate centres on payment to the "volunteer" staff, which had previously taken the form of a meal allowance. This term however, the system has been reviewed and as one council member admitted "the situation is still somewhat confused" and with the council split on the issue, no definite policy has been formulated.

Keith Jones, secretary of Events, was unrepentant over the stance taken by the stewards, and adamant over the pay issue; "There's no glamour in being an Events steward, as there may be in Ents, it's just hard work. The job is tough, time-consuming and often quite dangerous - they deserve reward."

The issue cannot be raised again until next week and with the security staff threatening similar protests, many Events activities may suffer.
DAVID KEEPE.

POLY PUBLICITY



A new Publicity Secretary has been elected at the Poly this week. Chris Bailey won the position in an election which involved less than 100 votes.

Mr. Bailey fought the same election last year but lost to Gabriella Lanza who eventually had to pull out of the position when she left her course.

My sources tell me that Mr. Bailey's first action on winning the election was to clean out the Exec. office of all unwanted papers.
DAVID HARRIS.

PARK PROTEST

Wednesday's Leeds City Council meeting was the scene of a noisy protest by a number of Leeds Labour Students and members of the Revolutionary Communist Party in support of a recent council decision.

Leeds City Council has decided to name a park in the centre of Leeds the 'Nelson Mandela Gardens'.

Nelson Mandela is currently serving a life prison sentence for his leadership of the African National Congress and his work struggling against apartheid.

Leeds students were protesting against a deputation presented by three Tory ex-councillors in opposition to the

Labour run council's decision.

The speech for the deputation was interrupted by R.C.P. members shouting about Bobby Sands, and loud catcalls followed the suggestion that the gardens be named after "our maimed Falklands heroes."

However as the matter of naming the gardens has already been decided by the Policy & Resources Committee the Labour majority would have to overturn for the decision to be rescinded.

The whole issue of naming the gardens was still being discussed as Leeds Student went to press.

ADAM LEBOR

Darwin Debate

The University recently staged the latest instalment in the ongoing debate on evolution.

R. J. Murray, Professor of genetics at London University was the guest speaker at a public lecture organised as a tribute to the life and work of Charles Darwin.

The discussion itself 'The many deaths of Charles Darwin' centred on the frequent dismissals of Darwinism by fellow scientists, and was delivered in a surprisingly light hearted style. Professor Murray, in staunchly revoking such attacks, remained balanced and objective. He highlighted the fragility of many alternative theories and showed as he claimed that 'The Darwin theory is alive and kicking'.

The climax however came in the inevitable discussion of Darwin and his relations with the Church. Here Professor Murray took an unexpected stance, saying: "I believe in the truth of the Bible. I believe that God could have created the Earth".

The obvious surprise was slightly tempered by the Professors explanation. He could not agree with the creationist theory that Darwin's process was 'sinful', but added: "God could certainly have made man, but only through the method Darwin highlighted".

DAVID KEEPE

Cut-Price Pints

Serious drinkers down at the Polytechnic may have noticed a change in their beer. Out have gone brewers Whitbreads, to be replaced by the best that Halifax-based Websters can offer.

The reasons are financial — Websters, offer terms that Michael Green, Poly tradings manager, could not refuse. Although Whitbreads offered a discount of £3.50 per 36 gallon barrel, Websters' £20 discount eclipsed this.

The change means that the Poly no longer serve student favourite Castle Eden, but Mr. Green stresses that Poly is still very much a free house.

ROGER HOLLAND

WHALING TRIP

Brum Ragging



Outstanding *Radio Aire* personality, James Whale, deigned to give an audience to ten first year students on Thursday last. The visit arranged by the 'James Whale Appreciation Society' proved exhilarating fun for the lucky Devonshire chaps who went along!

The elite 10 trooped off to *Radio Aire* studios anticipating a pompous bigot — who they met — however they managed to penetrate his character, as Andrew Howe, (Society Secretary) says, "We found him to be a very nice guy — who talked on a level. He lived up to our expectations and bettered them; was very personal and not in the least stand-offish".

Their admiration for this particular *Radio Aire* D.J., lies in his sarcastic wit, humour and intelligence, which they feel is brought directly across on his

late night phone-in slot. Russ Gilbert (founder member) said; "On arriving in Leeds, listening to James's show was one of the first things I did, and I was immediately impressed by his sarcastic and totally arrogant treatment of the phone-in callers. As a radio personality for me his proved refreshingly unique".

Once the Society was established they wrote to James who invited them onto the show. Society members saw this as an opportunity to raise James's very low opinion of students — or 'parasites of societies economy' as he prefers to describe those indulging in higher education. They feel they succeeded in at least making him rethink his attitude on this subject.

One fruitful event of Thursdays' visit was James's accep-

tion of their invitation to one of the infamous Devonshire formal dinners — after which he may do a show. Such an opportunity is too great to miss in the Society's opinion and so arrangements are being made in earnest!

Presently James Whale is not hosting his evening slot — the prospect of nights without James's insolent banter disappoints Russ Gilbert, who said: "We'll be in mourning this week because he's taken over an early morning slot, for the next two weeks. Whilst we were at the studio he told us to ring the new bloke and give him a lot of hassle".

Meanwhile James Whale, is according to Andy Kershaw (last years' Ents sec. — now fellow *Radio Aire* D.J.), becoming even more insufferable!!

RITA BRADY

Third World Weekend

Three quarters of the world's infant deaths could be prevented by the provision of clean water, immunisation and adequate nutrition.

This was one of the lessons of last weekend's Politics of Health conference, organised by Third World First.

Over 80 people, including

hospital shop stewards and factory health and safety inspectors attended a series of workshops on the issues of health both in the Third World and Britain.

On Saturday morning, speakers considered the links between profit and health, including the aggressive and inappropriate campaigns by drug companies in the Third World; and the hazards of industrial processes such as asbestos production.

In particular, an increasing amount of production is being transferred to countries with poor health and safety standards from those with restrictive safety codes, such as Britain.

Here the steady rise of unemployment and the privatisation of the health service could severely affect the level of health of the population.

However, very little emphasis

is placed on the social conditions leading to ill-health and the effects of improved conditions in factories and other measures such as bans on cigarette advertising.

Most of the workshops were taken up with considering cheap, effective ways of improving the general standards of health improving the general standards of health in the Third World. This meant stressing the irrelevance of most drugs and technology prevalent in Western medicine. Instead good sanitation, village medics and health education were the vital issues, conference members learnt.

With films, slide shows and entertainment all present seemed well satisfied with the event, with ideas for several campaigns generated.

MARTIN GILCHRIST

Ex-car park goes computer

The Springfield House site near the Faversham, is to be developed into a high technology centre for industry.

The company, English Industrial Estates hope to turn the old building into a 34,000 sq. ft. complex by extending, improving and refurbishing the property, which for many years has been used as a car park. Mr. David Hickton of English Industrial Estates explained that; "although the development would be a private con-

cern, there would be close contacts with the University through exchange research facilities and computer links". "The time of completion for the site", he added, "would probably be around next March".

The site of Springfield House had been sold last year, after the University had been refused planning permission to knock it down. Mr. Sladdin, the University Estates Officer said that; "we were looking for something to do with the site and were glad

Leeds Rag kicked off its 1982-83 programme with a Rag Mag selling trip to Birmingham, when students from all over Leeds descended on the city with a brief to sell all the Mags they could get rid of before retiring to the pubs.

Prizes are awarded depending on the number of Rag Mags sold, for a hundred, you win a bottle of wine, three hundred wins you a free sweat-shirt. Once the thousand mark has been reached, you reach for a firkin of ale.

The person who sells most over the year wins a weekend for two in Paris. Incentive races have a similar purpose. These involve two people going to wherever they like, free of charge so long as they send a postcard from their destination, sell at least two hundred Rag Mags and go on either a Wednesday or weekend.

If all the Rag Mags are sold and they come back with a postcard or Rag Mag from that area, they qualify for entry into each weeks competition for who goes furthest. The prize is a bottle of spirits of your choice.

Events planned for the next month or so include a Pyjama month or so include further selling trips and an all-night film festival at Hyde Park cinema, followed by a breakfast at the Merlion Centre.

Rag Week itself starts on 27th November with a parade through Leeds City Centre.

Polytechnic students are asked to contact Tim Tay and Jim Miller in Exec. for information.

MARILYN HONIGMAN

Poly Petition

Staff and Students in the Department of Fine Arts at the Poly have taken further measures to try and prevent the reduction in facility time available in the department.

They have now drawn up a petition calling for support from staff and students of other departments, as well as asking for support from the Fine Art department at Liverpool Polytechnic.

These measures are necessary, says Union President, Pete Godwin, because the staff and students are "coming up against a brick wall" in their efforts to resolve the issue.

NICK TURNER

Tut, Tut!

The Poly Exec. have passed a motion of censure on their Services Secretary, Clare McAdam. The motion was proposed by President, Pete Godwin at Monday nights' Exec. meeting and was passed unanimously.

Miss McAdam has been reproached for not turning up at three out of four Exec. meetings and has sent her apologies to none.

DAVID HARRIS

THE NEWEST OLD BAR IN LEEDS

HAPPY HOUR WITH FREE BUFFET

BAR-B-Q FOODS & LIVE MUSIC - COUNTRY, BLUES & FOLK

LARGEST VIDEO SCREEN IN THE NORTH

SMITH & NELSON

FOOD AND BEVERAGE EMPORIUM

BRAMLEY'S YARD (OPPOSITE THE ODEON)

THE HEADROW, LEEDS 1

(Between Lush Fabrics & The Post Office)

when English Industrial Estates popped up out of the blue to buy it.

The sale price of the land has not been disclosed but it is understood that £100,000 of the proceeds from the sale will be retained by the University to build replacement car parking facilities to the south side of the physics/administration building. This work has now begun and it is planned to be finished by Christmas.

SCOTT SMEDLEY

WAR in Bradford for Basil

About 30 Workers Against Racism members demonstrated outside Bradford DHSS Tribunal on Monday, in support of Basil Gwatidzo's appeal against his disallowed social security claim.

Basil, who recently spoke at O.G.M., came to Britain in 1975 after UDI was passed in Rhodesia. After working he studied at Bradford college on a grant from Sheffield LEA. When he claimed social security this summer after finishing his course, he was told he could have "no recourse to public funds."

WAR believes this as a government attempt to force him out of the country.

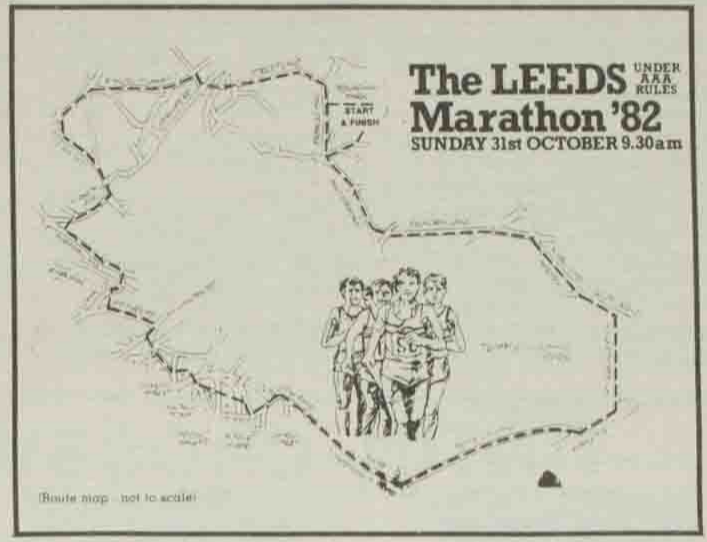
Since then he has received no money and has been refused a grant to study at Leeds University. He is now penniless having

sold virtually all his belongings and is living in University temporary accommodation.

His only income is from WAR collections in his name. At the appeal, a DHSS spokeswoman argued that since Basil had survived from June, he did not have a case for claim. Rob Knight, a leading organiser of the campaign said "its like the old witch's test no doubt if he'd died he would have been given the money."

LUU has supported Basil's case from the beginning, and in this weeks OGM voted to mandate Exec. to raise money through benefits and take any steps necessary to further Basil's campaign. A mass demonstration is to be held in London against deportation on 13th November.

SUZANNE LEVY.



Running wild...

While most of us were tucked up in bed recovering from a heavy Saturday night, 3000 people were pounding round the streets of Leeds on Sunday, in the annual marathon.

John Fox, a post-doctorate Research Fellow at the university, came in one quarter of a mile ahead of the field, with a winning time of 2 hours 23 minutes 8 seconds.

The race was run in aid of Wheatfields Hospice for cancer patients, and the likes of Jimmy Saville were there raising money. Dr. Fox however did not run for charity, believing that this was an event for athletic achievement only - and not for raising money. A lot of money was raised and with this in mind the Marathon will be held again next year. Dr. Fox will not be running. He says that there is "no incentive" as he could not run a personal best time on such

a tough course.

In training for the event Dr. Fox ran daily to the university from his home in Chapel Allerton and back again, a distance of about 7 miles. Marathon running is his only sporting activity and he "enjoys a drink" something which obviously did not hinder him in any way on Sunday.

Starting in Roundhay Park, the course skirted round South-east Leeds, Hunslet, Armley and Headingley to finish up back at Roundhay. In the park itself the crowd was entertained by numerous displays and a fun-fair.

Despite being reputedly the toughest course in Europe, the event attracted runners of all abilities. And of course there were the usual fun entries. One (male) runner decked himself out in a nurse's uniform (complete with stockings). He

finished, but the two competitors in Mr. Men costumes were last seen struggling around the fourth mile.

The Leeds Marathon was first staged last year. The increase in the number of entrants (last year there were just 900 runners) is typical of the mushrooming of interest in this peculiar sport.

But what is it that makes people put themselves through apparent torment as they run/walk/crawl around the 26 miles 385 yards? For many it represents the ultimate running challenge. As for the ordinary jogger, the prospect of a marathon provides the impetus required to get them out of bed and running round the park on cold mornings.

Just finishing seems to have been reward enough to make most of them want to come back next year.

JULIET LEE
FERGUS WALSH



• War demo

Low Key OGM

This week's OGM was altogether a more low-key affair than the previous two. The observance of one minute's silence for the victims of the Beirut Massacre at the start of the meeting was the only reminder of last week's controversial debate on the Israeli invasion of Lebanon.

Principal matters under discussion were the threatened annexation of the Italian Department and the achievements of the present Government.

It was resolved unanimously that LUU should support proposals to freeze the Chair of the Italian Department at this week's Senate Meeting. OGM also noted that the Department - the second largest in the country - would cease to exist in its own right should it lose its Head of Department.

Things were not so straightforward on the issue of the Government's record. Jeremy Mindell, proposing the motion that the Tories recent success in lowering inflation will help combat unemployment, applied for an

extra two minutes to put his case. However, members voted to restrict him to the normal four minutes, obviously in the belief that this was ample time. An Amendment then replaced the original motion, proposing that the only alternative to present Tory policies is a Labour Government with a truly socialist mandate. This was voted in by a clear majority.

OGM also discussed again the case of Basil Gwatidzo, a member of LUU now threatened with immediate deportation. It was resolved to take a collection for him at the end of the meeting, with a fund-raising disco to be held in the near future.

OGM also resolved:

- that the Union's publicity for the work of Amnesty International could be used for better effect.
 - to ask the Government to give fair treatment to Polish refugees.
 - to ask the University to waive academic and accommodation fees for all refugees.
- CHRIS LUMB.

Help for Chu

An overseas student who was stuck for cash has been given the chance to finish his course.

Brian Chu, a mechanical Engineering student was hit by the increase in fees for foreign students and left after the first year. He had to continue at home until a trust, set up by Leeds University, brought him back for more. The trust, in memory of Lord Boyle, the late

Vice-Chancellor, offered Brian £1000 a year to go on studying.

The trust was set up only this year and this is its first award. Brian could not have carried on without it. The award has been further supplemented by £1000 from the Tetley Lupton Scholarship scheme for promising students.

JULIA KAY.

Jobs at Action

Action will shortly be joined by two full-time workers. This is a long overdue event as at present, Action are the second largest student community action group in Britain, with no full-time staff.

Graduates will be interviewed in the next few weeks and will take up posts which are sponsored by the Manpower Services Commission. They will be involved in setting up new projects, especially in the Hunslet area, and with recruiting volunteers for Action, in particular the unemployed. A future project will be the preparation of a booklet on the availability and effectiveness of short-stay accommodation in Leeds.

Ann Barratt, Action co-ordinator, has said she sees this

as 'a valuable addition to Action's resources'. She added that this will help Action to involve themselves further in community life.

JULIET LEE.

DON'T BANK ON BARCLAYS

A demonstration against Barclays Banks' involvement in Namibia and South Africa was held by the Anti-Apartheid Society on Wednesday in support of the Internal Week of Solidarity with the People of Namibia.

Barclays are the biggest British bank operating in South Africa and supply capital to the government for military projects and business purposes. The campaign to make people aware of Barclays' investment in South Africa aims to publicise the collaboration of British companies with South Africa's illegal military occupation of Namibia's mineral wealth.

● The poor attendance at the demonstration was blamed on the bad weather and general student apathy.

KAREN BUTTERWORTH.

BEER MONEY

Thursday's Polytechnic OGM promises good news for Beckett Park residents.

Despite the threat from local opposition to the bar licence of the site Social Club, the OGM seems likely to pass a motion instructing the Exec. to carry out improvements to the bar.

The motion allows a budget of £40,000 for the improvements.

Although happy with the motion, the current Exec. are far from happy with its proposer, he is Mads Dohm, last years Vice-President, and to quote LPU Deputy President John Crean, "He did nothing at all on this last year, and now he turns round and wants to dump this in our laps!"

ROGER HOLLAND.

CHARITY FASHION SHOW

original fashions from 40's, 50's, 60's and 70's
for St. Gemma's and Wheatfields

Wednesday 10th November 1982
7.30p.m.

Tickets: £2.75 with Chicken & Chips; £1.00 without
Tickets from Rag Office in University Union

New Style for 4

A new style news and current affairs programme is to be broadcast by Network 4 from next Monday.

The programme, which is to be called *After One*, has been made possible by the enormous interest shown in the service since the start of term, said Elaine Bedwell, President of Network 4. It will be a combination of the existing news programme and *Magazine*, which is an arts-type show containing interviews and reviews.

The format of the new programme will be on the lines of an

arts-based *Nationwide*. It will open with news bulletins, followed by a more in-depth analysis of current affairs and rounded off with a more light-hearted look at cinema theatre and other cultural events around Leeds.

Elaine explained that since the acquisition of a portable video-recorder, the potential for live news coverage and interviews had greatly increased and the new programme was intended to reflect this.

Other features will include a special consumer spot, compar-

ing the prices of goods available around Leeds, and checking out places offering discounts to students.

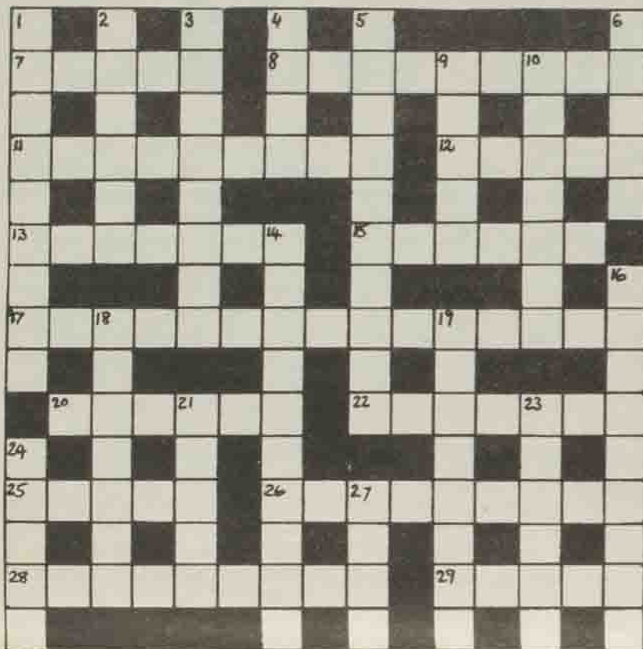
Elaine emphasised that everything possible was being done to overcome the technical problems experienced in the past.

They were often the result of outdated equipment still in use due to lack of cash for replacements.

After One will go out at 1.20 p.m. every Monday and Thursday, and can be seen in the ITV lounge or the Belton Bar.

ANDY CLOUGH

TINTIN CROSSWORD



ACROSS

7. Coverage gets pole in a fury (5)
8. 28 perhaps a girls best friend (9)
11. Choose verbal type of register (9)
12. Heading order (5)
13, 25. Explodes on fire, bright occasion (7,5)
15. Solution is to be responsible (6)
17. Girl reels away from 28 (9,6)
20. Found in sialic upheaval? (6)
22. He's responsible for corrosion found in peg (7)
25. see 13.
26. Throwing them a rose an food (9)
28. Sack the factory on 13,25 (9)
29. Not at home - a party to go one better (5)

DOWN

1. Money, perhaps found after lying in the park (9)
2. Inmate we heard in fit (6)
3. First to travel and stand across (8)
4. Despot in despot's army (4)
5. See (19)
6. Wakes in a turmoil? (5)
9. Childs toy birds (5)
10. Next, remember contains the last (7)
14. R.I.P. - Pete has become gravestone inscribers (10)
16. A son tires out wit averment (9)
18. Something to pull under the lone ranger? (7)
19. 5, 28 here nearly resulted in Ben's downfall (6,2,10)
21. Being pulled behind location of phallanx we hear? (2-3)
23. Went in to have a bash loosing heart with 9 and 11 (6)
24. That's enough for the drunk to make him sneeze! (5)
27. The remainder sleep (4)

Whodunnit set for April

A massive three day experiment in theatre techniques will take place at the end of April at Leeds University.

The experiment, to test the production methods of medieval street theatre will take the form of a free, one-day fair in the heart of campus. The other two days will be occupied with such events as a joust, a banquet at Kirkstall Abbey and, perhaps an ox roast on Woodhouse Moor.

The fair itself will be set up with a street atmosphere in mind. Flame throwers, puppeteers and musicians will be invited to provide entertainment while serving wenchies provide (fresh) mediaeval food. Stocks, ducking stools, May-poles and Kings on camels will also be featured.

But the main purpose of the fair will be the showing of the Chester Cycle of Mystery Plays for the first time in 400 years. The 25 plays will be presented on three home-made travelling wagons fashioned in wood and string. The aim is authenticity to find out about the problems the original players must have encountered.

The event is being produced by Jane Oakshot, a member of Leeds University English department, who is an authority on Mystery play cycle production. She produced the very successful York cycle here in Leeds in 1975.

Jane is hoping for involvement from the town as well as from the University and is already appealing for cash for the costumes. They will be specially designed for such characters as God, Lucifer and Noah, and each play will cost £400 to stage.



The community has already responded with great enthusiasm and the University is providing £2,000 worth of services for the fair.

Charities and Union societies stand to do well for there will be no charge to set up a stall. A market charter, dating back to 1610 prevents markets from charging their stall holders within 6/8 of a mile from the Leeds City Market. The University comes within this boundary and there will be no cash taken for the stalls, making this festival the only one of charity status in England.

Hopefully some 30,000 people will be attracted to the festival.

JULIA KAY

LEEDS UNIVENTS

PRESENTS.....

- Saturday 20th November
GILLAN with Spider.....£4.00
(Cheapest date on the tour)
- Wednesday 24th November
ALEXEI SAYLE.....£2.75
(Riley Smith Hall)
- Saturday 27th November
SIMPLE MINDS.....£3.50
PLUS MORE GIGS TO BE ANNOUNCED SOON

Be there or
be square!



Don't
be a
TURKEY ~

Austicks for books

UNIVERSITY BOOKSHOP - 21 BLENHEIM TERRACE, LEEDS
for

TEXT BOOKS & MUCH MORE

(LEISURE READING, TRAVEL CASES, BRIEF CASES, BOOK TOKENS
& HERALDIC SHIELDS FOR YOUR XMAS SHOPPING LIST)

Help a Child in Need - Buy
UNICEF CHRISTMAS CARDS

on sale at

64 THE HEADROW ■ 25 COOKRIDGE STREET ■ 21 BLENHEIM TERRACE

Grants Debate After All

This year's increase in student grants is likely to be debated in the Commons after all. This was unavoidable after an embarrassing defeat of the standing committee who hoped to pass the motion unchallenged.

Opposition parties are trying to raise the grants increase from the present four per cent which they consider insufficient.

They are accusing the Government of trying to impose an incomes policy on students in an attempt to force them to demand a loans system themselves.

This would avoid the need of the Government to attempt to implement such a system with all its resultant problems.

The loans scheme would discriminate against poorer and working class students who may

be unwilling to get into debt - said SDP spokesman Tom McNally.

William Waldegrave - Under Secretary for Higher Education, countered these claims, saying that the award for London students has risen by 6 per cent in real terms although it has fallen by 3.7 per cent elsewhere.

Mr. Waldegrave felt that students were being cossetted against inflation.

"The graduate population is still the best treated of the age group", he said.

He also stated that, "The student is being provided with a greatly enhanced life expectancy of earnings."

With the present graduate unemployment rate, Mr. Waldegrave?

JULIA KAY

LEARN TO DRIVE

BEGINNERS COURSE: FIRST 4 LESSONS £4.90 hr

JOHN LEE

Cookridge School of Motoring

D.O.E. Approved Instructor

Member of Institute of Advanced Motorists

STUDENT RATE £6.00 HOUR TELEPHONE
PICK UP SERVICE LEEDS 612200

SEXY FOREIGN MAGS...

Following the recent invasion of the city of Leeds by Nottingham University's rag mag, which bears the provocative title "Chicks" as well as revealing an even more provocative and sexist centrefold, the Union Exec. discussed in a meeting on November 1st a suitable line of attack of combatting the corruptive influence of such publications.

As the Union used to be bound by the constitution not to admit any sexist and/or racist material to the Union's premises, it was proposed that a blanket ban should be placed on all

rag mags other than Leeds', to prohibit their sale in the building itself. But such advocates of depravity will still reach the uninformed through other avenues, namely by selling the mags on the rest of campus.

Yet the very effectiveness of these proposed measures is in the Exec's demonstration of disapproval, which extends, according to Paul Hill, LUU Deputy President, to Leeds University rag mag itself, which hasn't been on sale in the Union since its publication one month ago.

SU BRAY.

BANNED IN UNION?

When Mr. Hill tried to prevent the sale of Nottingham rag-mags, he found that all Union policy against sexism had lapsed this year. This would allow anybody to publish any sexist material whatsoever in the Union, and understandably gave the Executive quite a problem.

President Mary Cassidy believes she has found the answer in the LUU Disciplinary Tribunal, the jurisdiction of which covers the publication of sexist material "by Union societies or members or Union bodies". She claims that this provision would operate, by extension over any member of any other Student Union, pres-

ent at LUU. However, as a source explained "in practice it's not as easy as it sounds. Under the present rules only the Disciplinary Tribunal can rule whether an article is 'sexist'. So that until a D.T., hearing, which takes about a week, no one, not even Mary Cassidy is justified in taking any steps at all against any purportedly 'sexist' material".

In the case of a day-trip to sell rag mags then, the Exec. are powerless to act. And, in fact, any Union member can get away with publishing any sexist material, although he may later be fined by the Disciplinary Tribunal.

ROGER HOLLAND.

AND AGAIN...

A sexist advertisement posted by Digby's Nightclub in the Poly Union last week has caused great concern to students and Exec. members alike.

The Ad. called for "Ravishing Beauties oozing charm and personality to work as Bar Staff and Drinks Waitress" and bore the official Poly Union stamp. The stamp is authorisation that the poster conforms with Union Policy and should only be given by Exec. members.

The fuss was created more by political hacks complaining that the poster was in contravention of an O.G.M. decision taken last year which banned sexism from the noticeboards, than by feminist students.

The offending item was brought to the attention of Monday nights Exec. meeting by Ben Cribb, External Affairs Secretary. Speaking before the meeting Mr. Cribb said "If I fail to have the offending poster banned, I will act unilaterally in removing the poster myself. The issue that has been raised is one of accountability to the decisions of Union General Meetings". At the meeting it was decided that the poster should be removed and the Exec. are now seeking the advice of the Equal Opportunities Commission in order to formulate a ruling on what the Union will regard as sexism in the future.

DAVID HARRIS.

FREE SPORT FOR DISABLED

Plans to allow disabled people to use University sports facilities free of charge are under consideration this week.

It's planned to allow 10-20 people, mostly mentally handicapped to use facilities for a few hours on Saturday mornings, without the need to pay the newly introduced £7.50 sports fees for non students.

An Action spokesman said the people involved could not afford to pay this levy. The scheme being run is in conjunction with the Sports Association for the Disabled.

LUU President Mary Cassidy has written to the acting vice-chancellor William Walsh to urge action. Mr. Walsh has expressed initial interest in supporting the proposal.

Action, the university community help group said the success of the venture, if given the go ahead, would depend on a positive response from students, as those taking part would need close supervision.

STEVE MARKEY.

CONSCIENCE EFFORT

Conscience, a recently formed student group is embarking on a new venture - teaching English to Vietnamese recently settled in this country.

The group, now with 50 plus members began life a year ago under the auspices of the Leeds Jewish Social Responsibility Council. It aims to involve both Jewish and non Jewish students from both polytechnics and university.

Currently, students are visiting over 25 such families. It's hoped that later in the year the project will be enlarged to cover Asian women, who are unable to attend mixed language classes.

Conscience is at present on the lookout for students to help with this venture - previous experience of this type of work is not necessary.

BRIAN ZEMMEL.

HELP HALIMAT

Societies in both the University and the Polytechnic have united to battle on behalf of Halimat Babamba, a twenty five year old Nigerian woman threatened with deportation.

Halimat came to Britain with her husband in 1980. She claims that ever since their marriage her husband has been violent towards her and tried to throw her out and keep their two children, one of which was born in Leeds. She alleges that he threatened to kill her on many occasions. Halimat said she managed to escape with her children to a Women's Aid refuge.

Her husband has since returned to Nigeria, and is trying to persuade the Home Office and the Nigerian Embassy to deport her. She fears that under Nigerian law her husband has the right to take the children, and if deported she faces the further threat of violence from him and destitution.

Halimat is employed and is a member of N.U.P.E. and is

SLEEPLESS NIGHTS IN LYDDON

Residents of Lyddon Hall claim they have been suffering so much from late night noise from events in the Tetley Bar that this week they complained to LUU Exec.

Lyddon President Shern-Lin Chew said that 30-40 rooms are affected by the noise, which carries on six nights a week, often until midnight.

Without wanting to be kill-joys, the residents are calling for a restriction on the number of discos held, particularly during the early part of the week.

Whilst sympathising with the residents, Union Exec. members said it was in the Union's interests to use the resources to the full. A great deal of money had

been spent on improvements to the building with this in mind.

They explained that nothing can be done this term, as the Tartan bar is booked up until Christmas.

A long term solution would be for the university to fit double glazing to the hall windows.

Previous approaches for this work were rejected by the university, so it seems unlikely that it would be carried out before the summer.

Meanwhile, Exec. has agreed to look into a proposal to limit the number of discos each week, and to ensure that the events end on time.

ANNE HAWORTH.



PRO-CHANCELLOR DIES

Sir William Tweddle, the Pro-Chancellor of Leeds University died unexpectedly on Saturday, 23rd October aged 68.

Sir William was elected Pro-Chancellor last November by the Court of which he had been a member since 1970. He was heavily involved in the University's recent financial and physical development and was the most influential layperson connected with the University.

Having graduated from Leeds in 1934 with a first class Honours Bachelor of Laws degree, he obtained a Master of Laws degree the following year.

He later served in the war and

became a Lieutenant Colonel. He later became a solicitor with a major firm of Leeds solicitors.

Apart from his University post Sir William held a number of other influential positions in Leeds. He was warden of Leeds Parish Church, Chairman of the Leeds Musical Festival from 1972 until 1978 and President of two building societies.

However it is for his work in the health service that he will be most remembered. He had been due to open the re-designed Leukaemia Unit only hours after his sudden death.

It is for his consistent service to health in Yorkshire that Sir William was knighted in 1977.

His death will mean a great loss to Leeds and the University for which he showed immense concern.

Professor Walsh, acting Vice-Chancellor of Leeds University said ".....It will be impossible to replace Sir William, so many were his gifts and so whole heartedly did he apply them for the good of others. He was a man who combined high spiritual aspiration with an admirable and rare practicality."

EMMA BATHA.

PARTY PIECE

If you're thinking of throwing a party, it will now be a little bit easier, and cost a bit less than you thought.

It is now possible to hire equipment from the University Union at a very reasonable cost. I asked Stuart Galbraith, the brains behind the Entstech hire service, how much it would cost for an average student party. He said that a cassette deck, amps and speakers would come to

about £8, with a deposit of around £50.

Entstech have just received a grant of about £1,400 to cover replacement and repair costs, and Mr Galbraith says that the service is now fully functional.

All interest parties (sic) should contact the Ents office between 1 p.m. and 2 p.m. any lunchtime.

ANGIE RIOZZI.

Who Dares Wins... AT A CINEMA NEAR YOU NOW!
"UNBIASED, ACTION PACKED STORY" DAILY MAIL

P.J. Polyp



Greetings, reptiles, young Claude's off pig-sticking in Croxeth or somesuch, so he can't come out to play this week. No matter, I, his dowager Aunt, the Lady Katherine du Warbeck, wield a far niftier pen.

Although it is the proud boast of our new editor, sultry pouting Susy Rylance, that her paper will be neither sexist, racist, nor even southernist, we of the Warbeck column feel that this must be discretionary. There are some matters which cannot be ignored.

For example, it cannot be denied that LUU Exec. office has recently seen scenes (sic) to turn the most Olympian of stomachs. Complaints abound of gross sexual harassment, most of which feature Ents. Sec. Dave Goodman. Witnesses agree that President Mary Cassidy has repeatedly made unspeakable advances to the virtuous, nay virginal David. On several occasions the helpless Goodnose has been dragged screaming into her office to suffer sordid degradation. I pass no judgement, but merely inquire of our fair President whether such horseplay will not perpetuate society's sexual stereotyping; and indeed, whether this is any way to get onto the NUS National Executive?

As a result of this ill-

treatment Dishy David's own sexual appetites have reluctantly awakened.

Together with renowned Events Sec. Keef Jones, he is competing to see who can 'pull' the most 'freshers' by Xmas. For some reason Keithy has a preference for blond mohicans, while Dave feels he cannot afford to be fussy. Our Super-league table shows that after 11 matches neither side has scored. David in particular seems so prematurely past-it that Newcastle Utd. are expressing an interest. What would Andy Ker-shaw have said?

More news of this incipient rivalry. Jones had attempted a cataclysmic coup in promoting the titanic Wah! for his fledgling Events outfit. However Good-nose, envious beyond belief, somehow convinced the powers-that-be that the band (the future of rock 'n' roll, no less!) would not be "financially viable". This from the man who booked Joan Jett!

Now we must turn to events Polywise; for despite the fact that they do nothing worth writing about, the Poly Exec. still persist in their ridiculous claims for equal coverage. Unfortunately for them, Warbeck is only too happy to oblige.

It is common knowledge that

there is much funny business afoot over the Polytechnic owned Warton Grange Hotel. This has been a perpetual source of financial embarrassment and legal problems for successive Poly Execs. But whenever approached about this most newsworthy item, they wander away, glassy-eyed, murmuring the satanic incantation "sub judice, no comment".

Fiddlesticks Mr. Godwin, come clean. I think we should be told.

Another leading light at the Poly is Margaret "Maggot" Saville, part-time bouncer and full time thugette. Poly Ents. Sec. and one of a horde of Vice-Presidents, the Maggot is not top of anybody's popularity poll at present.

Described by some as the Shirley Williams of Leeds - scruffy, and always late - Ms. Saville can be seen strutting around puffed with pride over the success of her recent Culture Club concert. Her ego tis' said, is nearing Chris Karle-type proportions (freshers, ask a second year).

For the morbid among you, Ms. Saville is the large lady with the Siouxsie haircut that went out of style three years ago.

There; that's about 35%, and I hope you're happy at the Poly; if not, ring up and complain. Just ask for Cathy.

STOP PRESS

Lastest sports results; after a controversial goal disallowed for off-side (The Dead Kennedys had something to say about this). Dave Goodman has finally scored, with Ashtray Double-Barrelled. Next week.....the lowest form of life, the political hack.....

COMPETITION

LEEDS UNIVENTS have kindly donated the prizes for the **GILLAN comp.** Just answer the questions below...

1. Who are the two bands who supported Gillan last time he played at the University?
2. What is the name of the bald moustacheoed guy with Gillan?
3. Stevie Wonder's last single was a cover version of a song written by whom?

The first three out of the hat will receive copies of Gillan's album 'Magic'.

The next three lucky winners will receive a copy of Gillan's latest single, 'Long Gone.'

All entries to be submitted by Tuesday 9th November, luncheon time to:

155 Woodhouse Lane
University Union Leeds Student Office
Polytechnic Executive

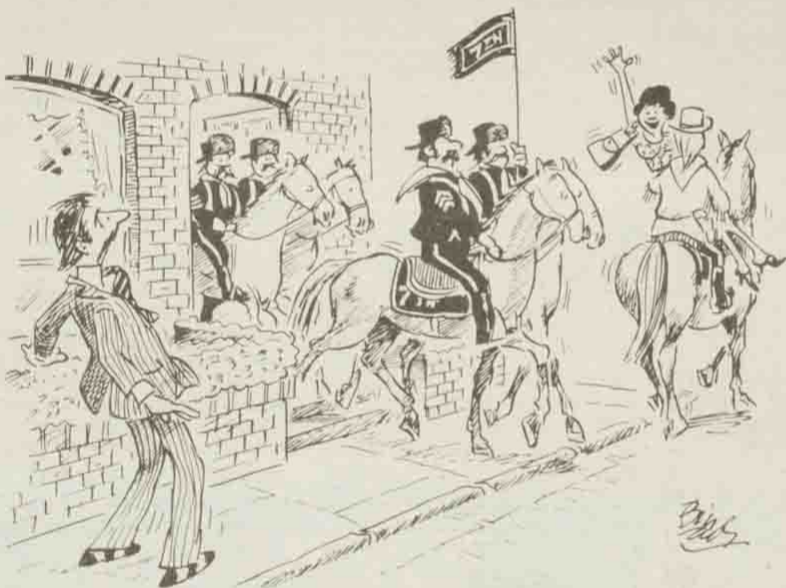
If you don't win - or even if you do, there are still tickets left for GILLAN, appearing in the University Refectory on Saturday, 20th November.

Tickets are £4, and it's the cheapest date on the tour.

Don't be a TURKEY



TAKE YOUR LITTLE LADY THERE BEFORE SOMEONE ELSE DOES.



THE BOSTON DINER
44 ST. ANN'S LANE,
HEADINGLEY,
LEEDS.
(0532) 755404.



MOTIONS FOR OGM

- ★ **Socialist Education Policy**
- ★ **Remembrance Day**
- ★ **Church and the Bomb**
- ★ **No Discrimination Against Irish Political Prisoners**

PRESIDING OVER SPORTS HALL CHARGES

Dear Sue,

Following your recent coverage of the Sports Hall charges issue, I would like to clarify a few points for all concerned.

Firstly, when authority was given for the new hall to be built it was on the understanding that it would be self-financing from registration fee income although it was not made clear at that time that the fee was to be recouped from students.

At a meeting with the sports club captains during last summer the charges were agreed to in principle. The controversy arose when the University attempted to implement the charges at the beginning of the session, an action which both the Vice-Chancellor and the Registrar admitted would have been quite illegal.

Discussions then took place over the basis of charges and University Council approved the following arrangements:

1. Students and staff of the University would pay an annual subscription of £3.50 and £6.50 respectively for free use of the facilities with the exception of the squash courts.
2. Students new to the Univer-

sity will be allowed to use the facilities free of charge for one month in order to sample the facilities before deciding whether to pay the registration fee.

3. Intra-mural users who are not registered users may use the hall on payment of the general public entrance fee of 15p.

4. Where clubs have reciprocal arrangements with clubs outside the University these will be considered on an individual basis by the committee so as not to prejudice present benefits to club members.

5. Students of other institutes of further and higher education in Leeds would pay a fee of £7.40 p.a. plus a reduced rate for use of the facilities.

Finally, with regard to the OGM motion on the subject, which I ruled out of order, this was unconstitutional for the following reasons:

1. Proposals to change the budget must specify the budget heading from which the money is to be taken, which the motion did not do.
2. As it is the University which provides the Union with its block grant, for a separate pro-

vision to be made, the University would have to take £15,000 from some other department to give to the Union, which we would then pay back to the University in respect of the Sports Hall charges. Such a proposal would be contrary to the University constitution and would be looked upon as quite ridiculous.

I hope this will clarify what has been quite a complicated business, and if anyone has further queries I would be happy to deal with them.

Yours sincerely,

MARY CASSIDY

TORY DEMISE?

Dear Editor,

As a member of the Labour Party (but certainly not of LUU's Militant dominated Labour Club) I am delighted to see that the Tories in our Union have collapsed once and for all.

Not only were they unable to find a candidate for the vacant position on the executive, but only two candidates were willing to put their names forward as delegates to NUS conference. Are these people ashamed of their politics? Even the humble SDP found a candidate somewhere in the woodwork to stand for Education Secretary.

Although I consider student politics to be a joke (a participative democracy in which no-one participates) it gives me great pleasure to see the end of a movement that I have despised for all of my thinking years.

ALISON DAVIES

DE-SPIRITED

Dear Editor,

We would like to express our disagreement with Ross Welford in connection with his article 'Spirits in the material world' in the 30th October issue of *Leeds Student*. In it he claims that spiritualists are part of the Christian church, and he does this with out backing up his statement at all. In fact, the Bible completely condemns spiritualism as can be read clearly in Leviticus, Chapter 19, verse 31, "Do not turn to mediums as spiritists for you will be defiled by them. I am the

Lord your God", and further in Leviticus 20, verse 6, where God says, "I will set my face against the person who turns to mediums and to spiritists to prostitute himself by following them and I will cut him off from his people".

Yours sincerely,

D. WILLIAMS
C. HICKS

● We have received several letters on this subject of the same import. Editor.

LETTERS to the EDITOR

All contributions should be made by the Monday lunchtime before publication.

Editor
Leeds Student
155 Woodhouse La
Leeds 2

51 Stn Leeds 1

I can only hope you will be able to help me with this.

MAKING AMENDS

Dear Editor,

The last OGM (26th October) debated the Israeli militarism, and the amendment to the original motion was carried forward. As usual *The Leeds Student* (29th October), reported the O.G.M. on the front page in a very disgraceful manner.

We would like Mr. Mark Leonard to research his topic more fully in order to get his facts straight. It seems that he did not bother to read the amendment, perhaps it was too long for him to read.

We refer to his article in *The Leeds Student* (29th October) when he wrote "The original motion was quickly amended from supporting the PLO to a more moderate stance condemning both massacres at Sabra and Chatilla, and the PLO." The context of this paragraph makes out that the PLO is responsible

for the massacres and not the Israeli troops and their allies.

The facts remain to be: (a) The amendment which was carried forward doesn't condemn either the PLO nor the Israeli Government. (b) The amendment criticised both sides, the PLO and the Israeli Government.

We consider the way Mr. Mark Leonard reported as part of the Zionist propaganda to distort the image of the Palestinian people and their sole legitimate representative the PLO.

In consequence, the Palestinian Soc. demands an apology from Mr. Mark Leonard and *Leeds Student* concerning the mentioned matters. Otherwise, Mr. Mark Leonard should explain how he reached such a conclusion.

L.U.U. PALESTINIAN STUDENT SOC.

TELLY SELLY TIME

Dear Sir,

As a group of concerned students, we would like to express our horror at the neglect shown by Leeds students regarding the whereabouts of deleted T.V. celebrities.

In particular our campaign has been focused on the sadly lamented demise of 'Bernie the Bolt'. Does he now manufacture exocet guidance systems? We are also looking into the question of whatever happened to the 'Blue Peter baby'. Did he really play Gripper Stebson in the last series of 'Grange Hill'?

We are looking into social, theological, legal, medical and literary implications of the disappearance of these pillars of our society. Those interested in this campaign please contact us, and lobby the Leeds Student office to give us a regular column.

Yours faithfully,

THE NORSEMEN
(names supplied)

SPARE RIB SUPPER

Dear Leeds Student,

Are women merely 'little ladies' to be taken somewhere by men? (re. Boston Diner advertisement, L.S. 22nd Oct.). Don't you know that women do not have to be 'taken' places by men as a way of enjoyment?

Perhaps the person in charge of advertising space at Leeds Student could be reminded of the policies which both the University and the Polytechnic Student Unions have in that advertisements of a sexist nature should not be given space.

ALISON THORP, LUUWAG,
LINDSAY WARD, LPUWAG.

● Whilst I am aware of the Unions' anti-sexist policy, I feel I must point out that Union policy cannot dictate the policy of Leeds Student which, according to the constitutions is neither the official organ of L.U.U. nor L.P.U. Having said that, Leeds Student does have a policy of not accepting material of a sexist nature, and it is just unfortunate that this one slipped through the net.

Editor.

LE PHONOGRAPHIQUE

THE MERRION CENTRE

Leeds 433688

INVITES ALL STUDENTS EVERY MONDAY NIGHT TO THE 'STUDENTS DISCO'

Free on door with Union cards. All pints and spirits 50p all nite.

ALL STUDENTS WANTING A PARTY AT THE PHONO CAN DO SO WITH NO CHARGE AT ALL. JUST PHONE 433688.

WEDNESDAY NIGHT

Free on door up to 10.30p.m. (after 50p).
All the best sounds with D.J. Jym.

THURSDAY NIGHT

Now every Thursday night - live band "PINK PEG SLAX".

All the best Rocky Billy Sounds from the 50's up to the 80's.
70p up to 10.30p.m. (After £1.00)

FRIDAY NIGHTS

Free on door with your Union Cards.
All pints and spirits 50p up to 11p.m. - SO COME EARLY!
No pumps or track shoes on this night.

SATURDAY NIGHT

All the best sounds from Ann your D.J.
Soft Cell, Cramps, Banshees, etc.
£1.00 up to 10.30p.m. (£1.50 After)

NOVA

10% discount for Students on our clothes.

Two floors of unusual gifts, clothes, jewellery, cards, etc.

nova is new

Albion Place,
Leeds Centre

Drink, Dra



The Student grant is at its lowest real level for years. Yet the Original Oak is still packed at weekends.

Leeds Student investigates some of the problems and cures of heavy drinking.

Around two per cent of the population in Britain are afflicted with alcoholism. Over the past thirty years it has become our largest social and health problem. In 1979, a report by the Royal College of Psychiatry warned that if alcohol consumption continues to rise, the country will soon be in the 'Grip of an endemic disorder of frightening magnitude'.

The cause of the trend is a general relaxation in attitudes towards alcohol, social pressure and easier availability. Young people are starting to drink at an earlier age than ever before and there is evidence that those who start earlier tend to have a higher alcohol consumption. The trend is enforced by the

dramatic increase in female alcoholism. The ratio of female to male alcoholics is now 1:3 compared with 1:8 ten years ago. This is particularly alarming because women are more susceptible to liver damage; only half the women who continue to drink when they have liver disease will survive whereas eighty per cent of men would survive in similar cases.

Alcohol is a great burden on contemporary society. Patients with alcohol related illnesses occupy one in every five hospital beds. In 1968, 42 per cent of all murder defendants were known to have some alcohol in their bodies. Over half 16 to 24 year old male deaths are road accidents with alcohol attributed as

the main factor, and drinking and driving offences as a whole cause one in five of all deaths on the road. The gory list goes on...

The effect upon the family with an alcoholic parent can be extremely emotionally damaging, especially for the children. Not only will the children miss one of the stable influences in their family but the other parent may inadvertently neglect the child as all their energies are drawn into the battle between the other spouse and alcohol. The Council of Europe in 1970 claimed that 60 per cent of child cruelty came from a background of alcoholism. It is also significant that a third of alcoholics are divorced or separated.



HIGH IN SPIRITS.

As you stand at the bar draining the last dregs of Tetley Bitter from your glass wondering whether it's your fifth or sixth pint tonight consider this fact.

Medical experts generally agree that if you drink five pints a day (or the equivalent in any alcoholic drink) you are running a high risk of damage to your health, not to mention other social problems associated with heavy drinking; Liver cirrhosis, heart disease, peptic ulcers, pneumonia, cancers of the intestine and even a late onset of epilepsy are some of the unpleasant surprises in store for the person who drinks excessive amounts of alcohol regularly.

What might begin as light-hearted social drinking can easily develop into a pattern of heavy boozing which increases the danger of becoming dependent on alcohol.

In particular, great pressures are exerted on students as drinking is often seen as a form of acceptability. Heavy drinking is mistaken for a sign of toughness, adulthood or sophistication. The 'macho' male's (and sometimes female's) 'reputation' is often based on the number of pints he can consume without throwing up. Social pressures such as the obligation of buying a round of drinks etc., can make it difficult to refuse a drink. It can become easy to rely on alcohol as a way of boosting confidence in awkward social situations, for example by loosening inhibitions at parties. Many

alcoholics are psychologically dependant people who find alcohol 'helps' them to overcome their feelings of inadequacy which often derives from their inability to communicate or cope with external problems.

That much is pretty obvious. But there are many unrelated and unseen social problems which can develop as a result of reliance on drink. Poor work performance, risk of accidents, an increased tendency towards violence, risk of incurring financial debts and a lack of sexual potency are all potential dangers which may affect the heavy drinker. Some people believe it is a stimulant. It is in fact a depressant and when it enters the blood stream it begins to effect judgement skills and self control.

It is difficult to draw the line between tolerance of alcohol and physical dependency on alcohol. A heavy drinker is one who regularly drinks over a bottle of wine, a third of a bottle of Whisky, half a bottle of Sherry or approximately four to five pints of Beer a day. These are the people who will eventually have a serious health risk though this high level of drinking can continue for a long time before problems arise. The signs of dependency are when a drinker begins to drink in the early morning to relieve withdrawal affects. Amnesia or 'blackouts' are warning signs that drinking is out of control. Excessive drinking does not necessarily

produce physical dependency and addiction but it can cause social and health problems. It is therefore seen as a species of alcoholism.

Most alcoholics who seek help are between the ages of 35 and 55. There is often 20 years between the first drink and the commencement of treatment. Younger alcoholics advance more rapidly and those who begin drinking at the age of 15 or 16 can lose control in their early twenties.

Constant alcoholic abuse can lead to addiction as alcohol is a drug which acts like an anaesthetic on the Central Nervous system. It is absorbed into the bloodstream via the stomach and 100 per cent absorption can take place even after a heavy meal. The amount of alcohol in the blood is found by measuring how many milligrams of alcohol are present in 100 milligrams of blood.

After one and a half pints or three whiskies (50 mg) the drinker becomes more cheerful and a feeling of warmth develops. These symptoms are accompanied by impairment of judgement and inhibition. Having consumed 2½ pints or 5 whiskies (80 mg) a person will be breaking the law if he or she drives a car. Having swallowed 5 pints or 10 whiskies (150 mg), the amiable social drinker can lose self-control, become exuberant or quarrelsome and his speech may sound slurred. Hav-

**Words: Karen Butterworth
Alison Warner
Photos: Tracy Moir
Cartoons: Ross Welford**

ink, Drunk

A SOBERING THOUGHT..

ing guzzled 6 pints or 12 whiskies (200 mg), he may stagger, lose his memory and see double. Having emptied ¾ a bottle of spirits (400 mg), oblivion, sleepiness and even coma could occur. Death becomes a possibility when a whole bottle of spirits has been consumed and

the level of alcohol in the blood has reached 500 mg. Death is certain when the blood level is 600 mg.

These figures vary according to the persons height, weight and tolerance but the steps outlined are a general guide-line.

Treatment for alcoholics has improved greatly over the last 20 years, though it is only successful when the patient is highly motivated. He must first accept that he is an alcoholic, which, lets face it, is a difficult step for anybody, and then contact outside help.

Treatment involves detoxification, a process in which a minimal amount of drugs is used to cover withdrawal fits, should they occur.

A strict regime is followed, and the alcoholic can only be considered 'cured' if he abstains from drinking completely for the rest of his life.

N.H.S. specialist units have been set up all over the country since 1962. The Leeds Addic-

tion Unit in Clarendon Road was set up 6 months ago. The specialist staff include; a consultant Psychiatrist, a community nurse, social workers and an occupational therapist. They deal mainly with alcoholics although some drug abusers and glue sniffers are referred also.

The Detoxification Centre in St. Mark's Lane treats the single, homeless alcoholics who can often be seen in Leeds.

Should you, or a member of your family have a drink problem, or just want further information contact:

Leeds Council on Alcoholism
21/22 West Boar Chambers,
38 Boar Lane,
Leeds.

Telephone: 431029

... "Wassat? ... Oh yeh, minsh a pint John ... Do what? No, it's only me sixth, coursh I can drink anuvver ... thasshh right, gerrit damn you ..."

We've all had or heard conversations like this. You stagger home afterwards with an empty wallet, but bulging bladder and stomach.

When you wake the next morning, the world is a grim place. Your scalp feels as if it has shrunk a couple of sizes overnight. Unaccountably, your tongue has fused itself to the roof of your mouth.

You view the day through bloodshot eyes and wan features, running a gauntlet of increasingly fanciful tales from your friends of how much you drank together and the escapades that followed.

Drinking can be fun, and should be enjoyed. It's certainly true that it enhances a variety of social situations — alcohol is

after all the only socially approved drug. Getting pissed, the badge of maturity. Or is it?

I reckon not. After several years of oozing bar room charm, drinking up, falling down and too many hangovers and associated embarrassing experiences, I attended a two evening seminar this summer on how to keep the booze at saloon bar's length away.

Points that emerged worthy of noting on the back of a beer mat are numerous.

● The key to slowing down is to decide how much you're going to have before you get to the pub or party. Stick to this self-imposed limit.

● Order halves of beer, or single measures. (It's worth bearing in mind that tonic with gin, or ginger ale with scotch, adds to the drunkenness factor, as the alcohol hits you faster).

● If the number of rounds tops your pre-set limit, switch to soft

drinks.

● In a crowded bar or party, where you're forced to stand, always ensure you can put down your glass in between sips — the drink will last longer.

● Try not to drink every day. At least, if you drink at lunchtime, then give the pub invite the same evening a miss (or vice versa).

● If you do have a skinful, then try to stay off booze for at least two days. It's reckoned that it takes that long to flush all the alcohol out of your system.

I've tried all this. I can't say hand on heart that my life has never been a little too full of cheer since, but I'm aware of changes in my life.

I'm better off financially, I can get up in the morning more easily, and I look and feel better.

What's more, when I do venture onto licenced premises it's enjoyable. Not inevitable.

ALCOHOL HIC...ME?

1. During or after drinking, do you become:

- (a) Irritable or easily angered,
- (b) Jealous or moody
- (c) or Neither of them.

2. Do you lose time from lectures or work due to drinking?

- (a) Sometimes,
- (b) Frequently,
- (c) Never

3. Do you drink at lunchtimes?

- (a) Most days,
- (b) Occasionally,
- (c) Rarely.

4. How often do you drink alone?

- (a) Never,
- (b) Two or three times a week,
- (c) More than that.

5. On a normal day, about how many 'drinks' do you have (one drink is the equivalent of half a beer, a single measure of spirits or one glass of wine)?

- (a) One or two,
- (b) Between three and six,
- (c) Up to ten,
- (d) More than ten.

6. Do you find you need a drink at a certain time, or the 'morning after'?

- (a) Yes,
- (b) No.

7. When you get drunk is it always 'intentional' (i.e. at the start of the evening you realise there's a fair chance that you'll be drunk?)

- (a) Nearly always,
- (b) Usually,
- (c) Never,
- (d) Never drunk.

8. How much do you spend on booze in a typical week?

- (a) £2.50 or less,
- (b) £10 or less,
- (c) More than £10.

9. Have you ever lost a friend through your drinking habits? (Be honest, now!)

- (a) Yes,
- (b) No.

10. Does the amount you drink ever concern you?

- (a) Often,
- (b) Sometimes,
- (c) Never.

Finished? Been brutally honest? ('Cos let's face it, if you feel you've gotta fib, you've got a problem anyway). Now add up your score and see if you need to book yourself a place at the Leeds Addiction Unit. But remember, this quiz can only be a guide, if you have any fears about your drinking, then don't hesitate to seek help!

- 1. (a)3 (b)3 (c)0
- 2. (a)1 (b)3 (c)0
- 3. (a)3 (b)1 (c)0
- 4. (a)0 (b)2 (c)3
- 5. (a)0 (b)1 (c)3 (d)4
- 6. (a)3 (b)0
- 7. (a)1 (b)2 (c)3 (d)0
- 8. (a)0 (b)1 (c)3
- 9. (a)3 (b)0
- 10. (a)3 (b)1 (c)2

How did you rate?

Eight points or less. What are you? A teetotaler? No, seriously, you are probably a sensible drinker, and know when to stop. Though if your score was made up of a couple of threes, then you might be at a slightly higher risk ...

Between nine and fifteen points. Well... this is a sticky one. You're probably not at any real risk at the moment, though take it easy. Those not-so-infrequent piss-ups are hardly doing you any good.

Between fifteen and thirty points. Yep, you got it. You drink too much, and don't try kidding yourself. Getting pissed is great fun but you do it too often. Either that or you're regularly drinking amounts that aren't good for you. Try cutting down, you'll save a lot of cash too! Over thirty points. Well, glad to see you could find a sober moment in which to complete the quiz. You are a real piss-artist and if you haven't got one already, you'll soon find yourself with one hell of a problem. Meths and tonic OK? ...

WHAT'S IT TAKE?



Blood Alcohol Level
50 mg.
(per 100 ml.)
"Delightful and Devilish"



Blood Alcohol Level
120 mg.
(per 100 ml.)
"Disgusting and Delinquent"



Blood Alcohol Level
200 mg.
(per 100 ml.)
"Dazed and Dejected"



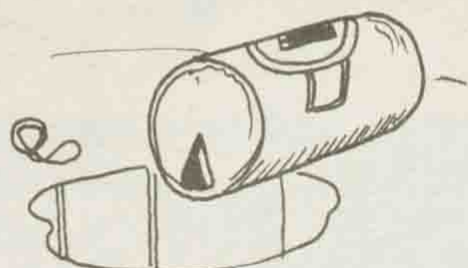
Blood Alcohol Level
400 mg.
(per 100 ml.)
"Delirious and Dizzy"



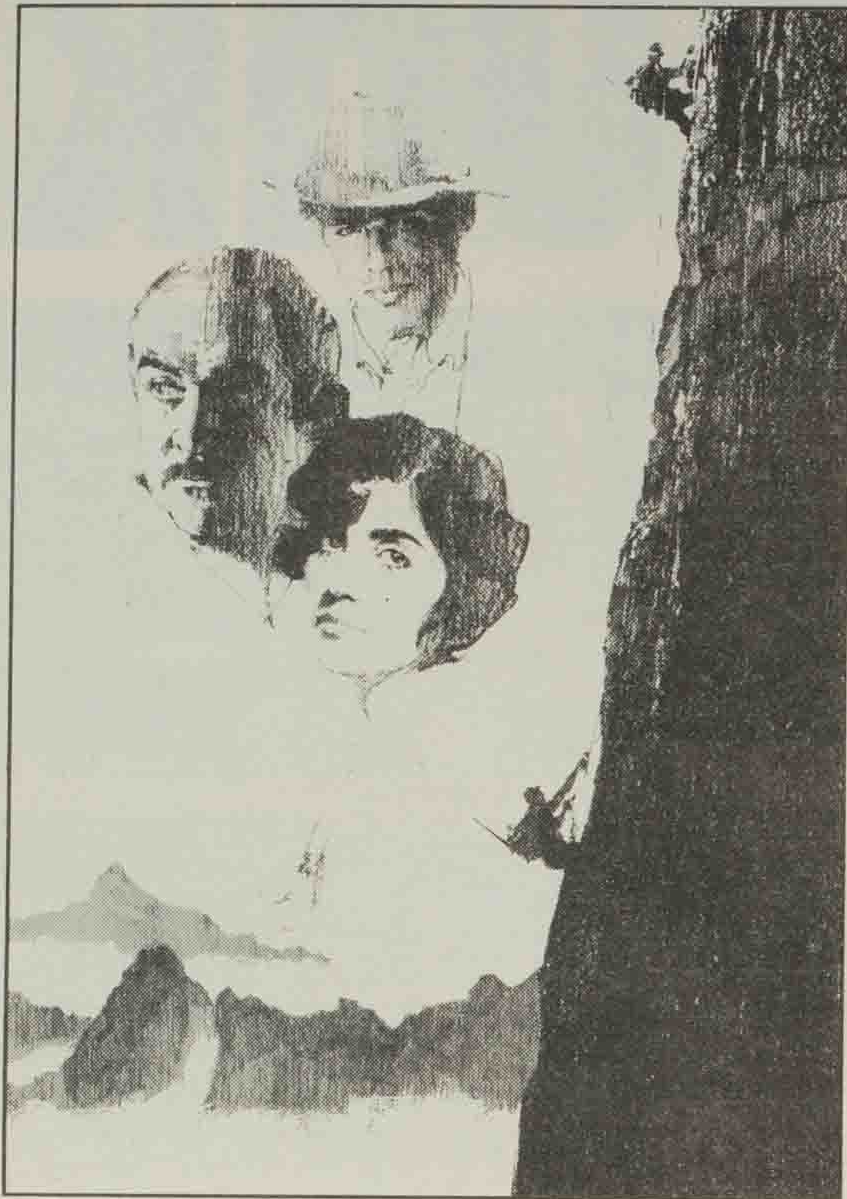
Blood Alcohol Level
500 mg.
(per 100 ml.)
"Dead Drunk"



Blood Alcohol Level
600 mg.
(per 100 ml.)
"Dead"



An obsession, a love, a memory.



FRED ZINNEMANN'S

FIVE DAYS ONE SUMMER^A

Starring

SEAN CONNERY

Introducing

BETSY BRANTLEY

and

LAMBERT WILSON

with

GERARD BUHR ISABEL DEAN

JENNIFER HILARY

ANNA MASSEY SHEILA REID

SEAN CONNERY in FIVE DAYS ONE SUMMER

Introducing BETSY BRANTLEY and LAMBERT WILSON

Screenplay by MICHAEL AUSTIN Executive Producer PETER BEALE

Music by ELMER BERNSTEIN

Director of Photography GIUSEPPE ROTUNNO AIC., ASC.

Produced and Directed by FRED ZINNEMANN



**Exclusive showcase presentation
now at
ABC Leeds**

Cinema

THE THING ABC

The latest in the recent rash of 'scaries', John Carpenter's 'The Thing' is memorable only for its imaginative special effects and its similarity to 'Alien'.

A remake of Howard Hawks' 1952 film 'The Thing from another World', it has all the elements of a typical monster from outer-space movie; a group of men cut off from the outside world fighting a creature that is both more powerful and more resourceful than they, with the fate of all civilization hanging in the balance.

Mind you, the plot has to be an improvement on the 1952 version in which a USAF base at the North Pole is threatened by an eight foot high intellectual carrot, that turns into James Arness in a spacesuit!

This time it's a US research station in the Antarctic, and the creature arrives in the form of a stray husky. Not that it remains a dog for long, for this creature has the unusual ability to eat people and then reshape itself to look exactly

like its late victim.

Result: it's impossible to tell man from monster, causing understandable mistrust and ill-feeling among the beleaguered 'scientists'.

Each appearance of the Thing is accompanied by ever more spectacular special effects — all very clever but not particularly frightening. Quite a shock when it first appears, but you quickly get used to it.

At one stage a man's head falls off, sprouts eight legs, and walks off like a spider. "You've got to be f...ing joking" remarks one character. Well maybe that's what Carpenter was doing, but it's often difficult to tell whether or not his tongue is in his cheek.

He is evidently trying to shock and to frighten, but he ignores the subtler methods of suspense and suggestion. Instead he uses gruesome representations of strange coloured tentacles erupting from living bodies in an attempt to beat people into a state of terror.

It doesn't work. The whole thing is too predictable, and too far removed from reality. It might, before long be removed from our cinema screens, and it won't be missed.

JAMES MATES



Books

FIRE FLOOD AND OTHER STORIES

VONDA N. MCINTYRE.

HALLIWELL'S FILM GUIDE — 2nd EDITION

Last month the second edition of Halliwell's film guide finally appeared in paperback form.

Leslie Halliwell, an established reviewer, buys feature films for ITV. His extensive knowledge of Hollywood formed the basis of the first Edition of the guide, intended as an encyclopedia of all English language films. The second edition not only has extensive revisions and updates, but also includes a selection of major foreign language films. However it is only a selection, and not particularly comprehensive. There is a dearth of Fasbinder films, for example. Some of the comments that accompany the films are a little strange also. In Bertolucci's masterpiece '1900' really 'for specialists only?' Of Bergman's classic 'The Silence' Halliwell writes: "Bergman may know what this is all about, but it is a certainty that no one else did; so everyone thought it must be very clever and went to see it".

In the field of English language/Hollywood productions this is a well-informed guide. However in a wider context the enthusiast will find it sadly inadequate.

STEPHEN McCUE

Science fiction writing has always been the bridge between our desire for imaginative thought and the need to give it reality.

Vonda N. McIntyre winner of the Hugo and Nebula awards for best novel in 1979 with 'Dreamsnake' is in this tradition. Many parallels can be made with Asimov; like him she asks the moral and philosophical questions in her collection of short stories. Her Tales are based on what she has learned from her degree in biology and the post graduate work she did on genetics. Her future worlds are based on plausible theory and facts projected into a fantasy universe taken over by advanced genetic engineering and technological fascism.

Her writing is clinical, painful, and truthful in its efforts to find human compassion in a world ruled purely by hard rational knowledge. The characters are alone, fighting back despair, but always idealistic and searching for a more humane and better future. Just like the one that greater technology is supposed to bring.

Most of McIntyre's stories are bleak and precise in their menace and frightening in the questions they ask about the future.

DERMOT QUIGLEY

Theatre

MEDIEVAL PLAYERS
RILEY SMITH HALL

The Riley Smith Hall is not the most congenial of places for an evening of medieval entertainment, but as usual the Medieval Players transcended their surroundings with their fast-paced, polished production of 'The Blessed Apple Tree', a 15th century Dutch comedy, and 'The Pardoner's Tale' by Chaucer.

The whole production is geared to recreating the probable style of medieval travelling players with authentic looking costumes and easily portable sets. There is also no elaborate lighting, just as the original players would have acted in daylight on the village green. Great attention is paid to diction; the pronunciation of Chaucer for example is the nearest the academics have got to determining the speech of medieval times. All the actors speak crisply and clearly, augmenting the verse with gesture and mime, which makes it very easy to follow the action — you don't have to be an English student!

An integral part of the evening is the ingenious fooling, stilt-walking, fire-eating and juggling which takes place between the set-pieces. The players are highly skilled at building up their audience.

The 'village idiot', for example, juggled balls, frequently dropping them. He was handed a set of knives which he juggled... and dropped. Finally someone walked on with three burning brands — by this time the people in the front row were looking nervous — and he juggled them faultlessly. He even managed to juggle two balls and an apple — while eating the apple! It's hard to tell if they are genuinely making mistakes or just playing with the audience — I suspect the latter.

Both pieces are simple moral tales. The earnest faith in God in the face of adversity is treated in a tongue-in-cheek way in the 'Blessed Apple Tree' where there are character-types such as Faith Trustwell. The highly exaggerated style of acting brought out the humour without caricaturing the characters' simple faith. The hilarious finale finds three apple thieves, a particularly ugly devil and his consort Death all stuck fast to the magic apple-tree — the grace of God has enabled Frank Goodheart to outwit the Devil and postpone Death.

'The Blessed Apple Tree' has been translated from the Dutch by a scholar and reworked to make it more appealing to a modern audience by the poet Edwin Morgan. 'The Pardoner's Tale' however, demonstrates that the English sense of humour has changed little since the 14th century!

Over two nights the Medieval Players attracted over 450 people — many of whom went both nights. Rumour has it that a full programme of professional theatre is tentatively planned for the union next term. There is obviously a demand for first class theatre as the success of this venture has shown. Let's hope more such cultural events will be organised.

S. M. FEAY

GAMMER GURTON'S
NEEDLE
RILEY SMITH HALL

In an evening of rollicking ribaldry, **The Medieval Players** maintained the high reputation that they built up during their two visits to the University last year.

The performance of the play at the University restored some of its original significance since the first

printed edition in 1575 bears witness to the fact that it was 'played on stage not long ago in Christ's College in Cambridge'. Nevertheless, wherever it be performed, the play is sure to extract laughter from even the most sullen of people.

The trifling loss of the needle belonging to Gammer Gurton is magnified into a major catastrophe by the trail of deceit laid by Diccon the Bedlam. His delight in causing havoc and mayhem results in a battle, both verbal and physical, between Gammer Gurton and her neighbour, Dame Chat.

It is only the monumental efforts of Master Bayly, the local judiciary, that restores peace to the community. The play concludes with a celebration in the tavern, for Gammer Gurton's needle has now been located in the trousers of Hodge, her servant.

It is difficult to nominate any paramount acting performances since they were all so excellent. The constant hearty laughter and generous applause from the audience provides sufficient indication that the play overcame any potential linguistic hurdles to produce an outstandingly entertaining evening.

If you still have not seen **The Medieval Players**, then make sure that you are first in the queue for their next performance. But a word of warning — don't sit in the first three hundred rows!

PAUL BROMLEY

OI FOR ENGLAND
POLYTECHNIC

D.A.C. theatre company has in the last few months taken 'Oi For England' on a rather off-beat tour of community centres and youth clubs, spurning a 'theatrical' audience for one which can identify directly with the subject matter of the play.

The play is set in a dank basement in Chapeltown (for this performance at least) where a skinhead 'Oi!' band rehearses to a backdrop of rioting England. The group is approached by the National Front, and asked to play at a right wing carnival.

The play then focusses on these youths as their attitude to fascism polarises, both for and against. Trevor Griffiths specifies that each performance should be followed by a general discussion; the play is intended to fuel such a discussion rather than bulldoze through a single point of view.

But tragically this has lead

the play foul of Sheffield City Council's leisure services department, whose refusal of a £12,000 grant to the company has effectively ended the tour. Councillor Ron Brown argues that the play offers a rejection of fascism which is 'only' symbolic — i.e. incomprehensible to the audiences D.A.C. were playing to.

This is strange, since in D.A.C.'s experience no one in the discussion thought the play to be right wing.

There is, however, room for confusion, since the play contains a number of powerful pro-National Front speeches which are never directly refuted. Indeed, out of the four skinheads approached by the N.F. two are in favour, one vacillates, and only one is prepared to reject the offer out of hand.

But what, one might ask, would be the point of an anti-fascist play finding a weak caricature of the right wing to kick around the stage for an hour. Griffiths presents the

N.F. point of view in all its ugliness, but with its appeal intact. For the National Front does have its appeal, as we can clearly see, as we look at things from the skinheads perspective.

In the painful, claustrophobic, hopeless world of the unemployed teenager the National Front offers the promise, however empty and fatuous, of a return to past glories. The appeal must be faced head on, or not at all. And in fact the most persuasive arguments against

extreme right wing politics come when its supporters are given the chance to speak;

Their England. Made on the backs made by the sweat and bone of the white working class, generation after generation. This England, run BY foreigners, FOR foreigners, Jews, Arabs, coons, Pakis, wogs from all corners of the earth. Chocolate England.

Griffiths forces a yes or no answer from cast and audience alike. The fascist option remains, but the middle

ground is shattered. As Finn puts it.

... if you're not a human what are you?

— A Nazi.

— Right.

'Oi For England' is, like the music it contains, loud, brash and muscular, with a message which demands to be heard. It is also quite extraordinarily powerful drama. If you want to see it maybe you should write to Councillor Brown and ask him why you can't.

MIKE TEASDALE

Preview

SIREN
EMMANUEL CHURCH

Siren is a London women's group which has been in existence for two years, touring extensively in the U.K. and on the continent. They owe much to their roots in street theatre, using mime, dance, experimental sound and music.

On Thursday, November 11th, at 8.00 p.m., they will be performing **Curfew** at Emmanuel Church — a stylistic production portraying a totalitarian society where 'the Managers have become the Menace'. Three women fight for survival, both against the Menace and against their own fears and conditioning. Relationships between them are explored with tenderness and 'razor-sharp' humour.

After the **Scarlet Harlots'** production at the Poly last night, and **Siren's** arrival next week, it seems that women's theatre is finally reaching Leeds.

LUCY O'BRIEN

COMPETITION

The ABC CINEMA is once again offering ten pairs of free tickets as prizes in this week's competition.

The tickets to a new British film 'Privileged' from the Oxford Film Company (directed by Michael Hoffman) will go to the first ten correct answers drawn out of the hat to the question printed below.

Entries must be handed in to the Leeds Student office in the University Union or the pigeon hole in the Polytechnic by 1.00 p.m. on Tuesday, 10th November.

"WHO PLAYS CLARK KENT

IN THE SOON TO BE RELEASED SUPERMAN III?"

Tricky one, eh?

● Even if you don't win, the manager of the ABC has promised that three students will be allowed in for the price of two for this film.

More details next week.

QUIZ WINNERS: J.A. Edkins (Lyddon Hall), Carol Isherwood (Kelso Road), T.H. Org (Ebor Place), S. Smith (Skelton Crescent), A.C. Chong (Ebor Crescent), Ian Winter (St. Marks Flats), Rick Greer (Moorland Ave), J. Peters (Clarendon Road), Erica Johnson (Belle Vue Road), Angela Parish (Shaw Lane).

THREE JOHNS
TARTAN BAR

The **Three Johns** — a band recently featured on the NME and on the John Peel show — make a special live appearance in the Tartan Bar, supported by **Red Star Belgrade**, on Friday, November 12th, in an event organised by **Music for the Masses** society.

Meanwhile **Music for the Masses** advise all would-be band members to complete the available forms at the gig,

where new membership cards will also be available. Watch out for a soon to come feature on the **Three Johns** in these very pages.

The **Three Johns** will soon be releasing their second single, a follow up to the highly acclaimed **White Boy Engineers**. This gig is a must for all of you engineers contemplating emigrating to South Africa.

ED VERT

LEEDS
PLAYHOUSE

Calverley Street

442111



FILM THEATRE

Tonight at 11.30p.m.

'Our of the Blue' (X)

— a picture of a wasted generation

Tomorrow at 11.30p.m.

'The Hunchback of Notre

Dame' (A) — with a magnificent

performance from Charles Laughton

as Quasimodo.

Sunday at 7.30p.m.

'Greed' (A) — Erich von

Stoheim's most famous film plus live

piano accompaniment!

MUSIC

Monday at 8p.m. — JAZZ

Jimmy Giuffre Band

Students £2

Until 13 November

Alan Ayckbourn's

TAKING STEPS

'An evening of enormous fun

recommended to everybody'

Yorkshire Post

'... spirited Playhouse production'

The Guardian

'... stepping up the laughs'

Evening Post.

Starts 18 November for 2 and a half

weeks only

THE ELEPHANT MAN

Student tickets from £1.50

Arts

Chicago on Woolf... SOH...Tiger Milk...Not Q-Tips...

Exhibitions

JUDY CHICAGO AT THE SISTER TO SHAKESPEARE EXHIBITION LIVERPOOL

I went to Liverpool last week expecting Merseyside's Blackie Community Centre to be a fairly modern building, not the large pillared monstrosity that it is.

The *Sister to Shakespeare* exhibition had been going on since 15th October; a special event to commemorate the centenary of Virginia Woolf. As well as workshops, the past week had featured women writers, artists and performers - including well-known names such as Eleanor Bron, and Frances Horowitz.

Last Thursday night, Judy Chicago gave a lecture which was perhaps the key to the whole exhibition. An American artist, Ms. Chicago is probably best known for her creation of *The Dinner Party*, an exhibit which took six years to complete. Fusing industrial design with needlework, it honours famous women throughout history.

Her lecture, entitled *Women, Art and Society: a Tribute to Virginia Woolf*, outlined the major difficulties that women have to over-

come in bringing their work before the public - not only temporarily, but also in order that it should have lasting historical value.

Using Virginia Woolf as a model, Judy Chicago stated: "It starts with telling the truth and going as far as you can." Woolf, - with her "man's"



• Virginia Woolf by Jacqueline Morreau

genius in a woman's body" - went too far, finally deciding to quit the society she was constantly at odds with by committing suicide. A pioneer in "telling the truth," Woolf directly related literary form to female experience in her use of language - words that wed ideas to feeling.

Judy Chicago referred to the "excess of masculine culture" which has weighed

down feminine values, causing much of women's energy to be trapped, internalised and therefore left unconsidered. She appealed to the necessity for women to redress society's imbalance - the need to give a softening influence to the brittle edges of abstract and intellectualised masculine thought.

Though generalised, and perhaps simplistic, Judy Chicago's ideas undoubtedly moved the mixed audience. She spoke directly, without any redundant information; and at the end invited questions or responses. She presented a deliberately uncorny challenge, urging women to declare themselves, - by taking the public face, straightening out powerful, yet chaotic female feeling with intellectual rigour.

By "competing with yourself to do your best," and using methods of co-operation rather than traditional masculine competition "women can help open up the system, so that we all can use it."

This stirring talk left the audience in controversy. It was a lecture that gave direction to the *Sister to Shakespeare* exhibition; showing how women, like Virginia Woolf, have a strongly intellectual as well as practical importance for society. LUCY O'BRIEN.



The things I do for you. Having studiously avoided contact with Bow (Wow Wow) Haus over the last couple of years, I felt it my duty to you, fans, to investigate this cult on your behalf. It was painful. I'd rather catch rabies than go to the Doghaus to be barked at again.

You've all heard their new (??) single, Ziggy You-Know-What. So they can ape Bowie. Very good. For those not familiar with Northampton's finest - it doesn't say much for Northampton does it? - a touch of personal history.

Pete Murphy has always had an obsession about living in the same house as David Bowie. The rest of the band used to find this embarrassing. They put up with him because, even then, Pete was a better David than Ziggy, or should that be a better Ziggy than David? Pity Pete's no good as a frontman for a band.

Never mind. At any rate, the rest of the band had a bit more street sass than our Pete - not difficult, I agree, as Pete is a graduate of the Freddie Mercury school for sensitive singers - and they vetoed all of Pete's suggestions for a band name. Given Pete's obsession, they opted for Bowhouse, instead of the more obvious Bowhouse.

Pete reluctantly agreed to the final change to Bauhaus when it was pointed out to him that although the reference to Bowie was not transparently obvious, people

Q-TIPS WAREHOUSE

Sunday night. Hallowe'en. James Bond on the telly and Q-Tips at the Warehouse.

It was cold on Sunday, but I did a lot of walking to keep warm. Firstly, half way across Leeds to find a functional dit-dah-doo-dah machine (automatic service till to the uninitiated) and then to the beloved Warehouse. Both "romps" were a waste of time and energy - the stupid machine was "out of service" and the Warehouse would not let me in.

"Why ever not?" I hear you cry. Because "we've already got five from Leeds Student in" I was told. Being nice people they were very nice about it but all the same I could not get in unless I produced £3. This financial exaction brings me back to the dit-dah-doo-dah - if you recall it did not dit-dah

would immediately make the connection when they came into contact with his subtly derivative stage persona. In Ego's opinion, as you ask, Pete Murphy doesn't deserve to live in the same house as the thin white duke, Bowie's garden shed would be more his style. But then, Baushed doesn't have the same ring to it, does it?

Bauhaus are far more pernicious than other Bowie copiers such as Gazza Numan or Duran Duran. For some unfathomable reason, they retain a cult following and have some sort of credibility. On second thoughts, the reason is not so unfathomable, the difference between them and Gazza et al is that no



• Piers Williamson

one's listened to Bauhaus before. This tour and single should soon put a stop to these misapprehensions.

As the more intelligent of you might gather, Di Ego was not impressed by Bauhaus. They were crass, bombastic, boring and untalented. Pete Murphy was the worst culprit, with his pseudo - serious strutting and ham-fisted posturing. An enduring memory is Pete clutching his mike, leaping to his knees and leaning his head on the ground while trying to give an impression of an angst ridden artist. I was waiting for Pete to do a Yosser Hughes and headbutt the stage. No such luck.

It was sad watching the audience go crazy to the familiar strains of Ziggy Stardust. More than any other theme, the self-referential tale about the destruction of the pop star is not meant to be revived. All in all, a pathetic sight.

This has been a public service denouncement. DI EGO DE VEGA.

or doo-dah so I was left with only a quid on me.

I tramped miserably back to the grand centre of entertainment, the Union and watched T.V. O.K. so I missed James Bond, but at least I saw Clive James, perhaps a literary equivalent.

If you really want to know about the Q-Tips, I'll hazard a guess, though you might be better off asking the five bastards who got in. Last year they played on their farewell tour at the Warehouse (confusing, isn't it?). It was hot and steamy and everybody had a ball, dancing the night away. But what the hell, who needs rehased, sub-standard versions of the soul classics when you can slap the originals on the turn-tables at home? This is sour grapes and probably unfair to the Q-Tips, but I don't frankly care any more. DAVE SAMBROOK.

Jazz

SOH/TIGER MILK LEEDS PLAYHOUSE/PACK HORSE

SOH is an all-male band led by Alan Skidmore, saxophones, with Tony Oxley on drums, another veteran of the British scene, and German bass player Ali Haurand.

Initial impressions are dangerous at the Playhouse. It niggled that H's bass, stage left, sounded from high over the right hand side of the stage, thanks to the PA. More importantly O's drums clattered away busily so that the others had to fight to be heard, throughout, except when a player was soloing.

The first piece was John Coltrane's *Lonnie's Lament*. S played contemplative melodic tenor while H bowed discreetly. The tempo and intensity gradually built until we were bombarded with a flurry of notes, leaving just a hint of melody and regularity. H was given a first opportunity to show his skill in a solo by turns percussive and melodic, fluent and contemplative. He also explored harmonics and dissonance.

Later Coltrane's *Weaver of Dreams* figured, with others by John Surman, S and SOH. S's performance showed it was important to him to start from the work of Coltrane, but his leading role constrained him from taking the space required to let us hear him properly. Both the others were given several solo passages. O's drumming was quietest and most interesting when the other two were silent. H provided consistent and discreet support in ensemble, but in solos, technique outweighed invention.

The group improvisation was frequently intense but mechanical. It had a distant relationship to the themes it was based upon, especially the reflective and melodic Coltrane tunes.



A combined high and low point was provided by the band tune. H opened the proceedings by applying a vibrator to his bass, obtaining a variety of interesting noises which might have repaid further investigation. These were interspersed with cracks about "holes" and various German and British conservative leaders. Such a crass attack would have been better left out.

All credit to the Playhouse for giving us the opportunity to see top modern jazz names. I was glad to have it, and found it interesting, but not very enjoyable. The reduced audience which stayed for the second half were in no danger of applauding long enough to suggest they wanted an encore.

Meanwhile, an evening of improvised music was the treat in store at the Pack Horse. The players were Anne Marie Roelofs, from Holland and known from the Feminist Improvisation Group, violin and trombone, Su Ferrar of the London Musicians Collective, (sometimes amplified) violin, and Josefina Cupido, percussion and voice.

The unusual line-up took a bit of getting used to.

This one seemed to contain more arranged elements than most, but the improvisation turned out fine because of three elements in particular: the trombone, Josefina Cupido's vocals and humour. In the second piece, Su's violin gave us a brief quote from

the Marseillaise but moved on without labouring the point. In the third the voice screeched softly, sang, popped and crackled, with similar accompaniment from trombone and violin, in a kind of free scatting which caused hilarity. It turned into a vacuum cleaner which was thrown against the wall and then backed a mime of factory work which led to a splitting headache. The eight improvisations which made up the bill of fare took us all over: lyrical passages, a tinge of Gaelic folk and allusions to Bach, Beethoven's 9th and Stephane Grappelli. Referring to jazz, the trombone made declamatory noises like a barker at a fair. At other times the music was quietly intense, in a dialogue of squeaks and squawks, scratchings and rustlings. The widest range of sounds was explored. And we all had fun! The longest part ended with the performers exchanging exultant embraces and the audience applauding wildly. For the last number the group was joined by local musician Alan Wilkinson on soprano sax. The augmented ensemble was pressed into doing two encores by a crowd that packed the room. They ended the evening by taking their name off a nearby bottle of wine and promising to come back soon. Anyone at all interested in this kind of music would be well advised to see them when they do. PAUL HUBERT.

CITY LIMITS BOUTIQUE

NOW OPEN AT OUR NEW PREMISES
2 EMPIRE ARCADE, LEEDS 1

Telephone: 438815

For the finest selection of Ethnic Clothes
plus
Beautiful exclusive English craft clothes.

Merry Mari's 'mazing...Murphy's Mediocrity...

Arts

Gigs

MARI WILSON
LEEDS POLY

Question: What is bordering on the tubby with a mouth like a country oven and a hairstyle that looks like it's been carved from wood? No answer required.

You could tell it would be good. From the dramatic *Rhapsody in Blue* intro and the glittering sign behind announcing the 'Hank B.Hive Show with Mari Wilson'. Corny? Of course.

Hank B.Hive is a caricature of a 1950's T.V. host. You know, a pain in the arse with cringe-inducing wisecracks like 'This is Wilbur. He's so cool, when he looks at a gurrl (heavy American accent) she doesn't blush, she turns blue! Ha Ha!'

But he got away with it mainly 'cos we knew he wasn't serious.

The introduction over, Hank took a back seat after announcing 'Heeeeeeere's Mari!'

Launching straight into her last single *Baby it's true (I can't stop myself from loving you)*, Miss Wilson was lured and lacquer all the way.

It was hammed up outrageously, going way over the top yet never getting tedious.

She's had enough of you was acted out by Hank, Mari et al in between the quite ridiculous hand-actions and finger-clicks. In fact it was all a trifle silly.

That's what made it so good. The songs themselves are great. **What a dreamer you are** has a brilliant tinny 'Happy Days' sound — but without the actions and the accompanying accessories it would have been pretty two dimensional. As it was there was enough corn to open a chicken farm.

BAUHAUS AND SOUTHERN DEATH CULT REFECTORY

In Wales the sounds of the long dead have been recorded by putting volts through the stone walls of an old pub. 'The British Electric Foundation' used a similar technique and fed a power supply through various forms of human receptors producing a disconnected generation of the quasi-Sparks and an inhuman league of Gary Numans.

Then a band called 'Jack Plug and the Sockets' put their energy into reviving older cultural Frankensteins and hoped to bring their glam-god Ziggy back to 'the land of the living'. Seeking wealth and immortality they changed their name to something with a bit of prestige and artistic irrelevance and decided that 'Bauhaus 1919' fitted the market. They shook off Ziggy's stardust and put on the black of an anarchic sub-cult, fixed on their death masks and went out to lead the 'lost rebels' to a world where ('The Sun's Gone Out - latest LP (no-one eats or sleeps and grows thin and morbid in the dark.

Their followers hung like disorientated moths around these luminous recreations of 'Bella Lugose' (lead singer Pete Murphy) and 'Ziggy' (lead guitarist Danny Ash) that had been charged out of



● Pic. Kev Murtha

Mari's no mean artiste when it comes to ballads either, as *Cry me a River* plainly showed.

Sitting on her own on the stage and with a bit of help from Harry on sax, her simple rendition of a beautiful song was one of the high points of the show.

Next of course to *Just What I Always Wanted* which was, if you'll forgive the predictability of the comment, just what the audience wanted.

Glitter and hair grease worked together with the music to provide a show of such professionalism it's difficult to see why Mari Wilson and the Wilsations haven't made it sooner.

After the show I asked Mari if she was surprised they'd taken so long: "Well it's had its advantages," she replied

in her tinsel-town Neasdon accent. "Marc Almond said he half regretted getting famous so easily, so perhaps having to wait has been good for us".

How did they find time to rehearse the show? "Actually we do very little real rehearsal. The present act has been built up over time."

This is a twenty-six date tour, does it get exhausting? "Well yes, and no. Obviously it's tiring but when you compare it with our last two tours which were 45 and 60 gigs, twenty-six is a relief!"

So still looking bright-eyed and bushy-haired I left Mari Wilson as she went off to the Warehouse.

A returning to her roots?

NORMAN BHARDWAJ

Gothic Rock. These were the visions and re-amped sounds transmitted to a near-capacity crowd at their Leeds venue, supported by 'Southern Death Cult' (another band that hopes to stay young forever by worshipping the darkness and embalming themselves in clouds of carbon dioxide).

This band played with maximum power output, but the locomotive drumming and furious vocals failed to move the audience. There's mild clapping. 'Ta' says the lead singer, 'You're boring'. He's got the right Ziggy image but the wrong act: two guitarists are pillared each side as he does an old Mohican hen-hop, knee-jerking like he's got *Evo Stick* on the bottom of his feet. Then the galloping drums are off again and it's back to basics and Banshees with the drummer thrashing it out against a deluge of plunging guitar riffs and roaring vocals.

At the end of the last song the crowd violate the law of audience/Star disparity and start to approach the stage which really angers the 'sullen demi-gods': 'This is the biggest shithouse in the World' shouts the lead singer, 'You lot should be THERE not here'.

The congregation is waiting for the 'real gods' from outer space. Atmosphere and expectancy revved up by the thundering of Holst's 'Mars'

from 'The Planets' (Bowie used Beethoven's 9th Symphony in his Ziggy days). Smoke rises and lighting flashes behind the spider shapes that move on stage. The 'Bauhaus' ensign ignites like a flaming cross and the crowd roars. Power connected: 'Bauhaus' transmit a sound that is coordinated and finished by vocals with the thin 'Bowie' cutting edge.

Murphy paces the stage and proves he can match the agility of Ziggy. (once described by 'The Daily Express' as being 'more like a Soho stripper ... he bumps and grinds, he wiggles his hips') and includes a few Kung Fu kicks to show off his youthful Jagger physique. He dives between light rays and picks up an ultra-violet rod so his face glows skeletally in the dark. Then in a kaleidoscopic frenzy of strobe lights his head and shoulders flicker across the stage: It's a real performance-spectacle.

The music is mainly echoes from traditional Glam-Rock: pounding drums and strutting bass alternating with floods of sound and up-tempo rhythm. Ash experiments with a 'squalling gull' sax and makes a 'saw played with bow' sound using a drumstick across his guitar. A production line effect on drums by Kevin Haskins is punctuated by Soft Cell synth: some evidence of the innovations of 'Bauhaus' that back

SQUEEZE
BRADFORD, ST. GEORGE'S HALL.

Squeeze — the 'Coronation Street' of pop. Miss a few episodes and you know nothing will have changed when you come to watch again.

They should progress, shouldn't they? Yet why change a winning format?

Trouble is Squeeze don't have the character of the Street.

Not that they're boring, they're just so normal.

They're a good singles band (and it was the singles that shone tonight) but whereas Chinn and Chapman were able to write singles and create images from their stars, Squeeze desparately lack a true home.

What makes so many people totally indifferent to them is also their weakness live. They're incredibly visually bland. OK, they needn't come on like Boy George, but they don't need to look like Elvis Costello in the later stages of rigor mortis (a la Tilbrook).

In a world of Oakeys, Heywoods and Adams, Squeeze are probably doing

BLUE ZOO
LEEDS POLY

Blue Zoo came on unannounced, faced with an audience left cold and cooling rapidly after the support 'B.K.'s' departure. Similarly, a non-descript usual mish-mash with one look-a-like band member; the keyboard player from the disbanded 'Sparks' — gangly and uncoordinant!

Comparatively though, 'Blue Zoo' were more forceful

and exacting than their support. They sounded and looked more determined; more professional. A few of the numbers had the elusive 'dance your ass off' quality (sic - danceability) and the repertoire was more varied, including the occasional ballad. Already at number 39 in the charts with 'Cry Boy Cry' they may do well; to elevate themselves above the standard chart mediocrity they'll have to do a lot better.

WAYNE HAYES



● Pic. Tracy Moir

the sounds of the long dead that use Murphy's body to transmit themselves into the present.

Hysteria spreads mildly in the front rows and punks start throwing themselves into the air. David Jay (fretless bass) asks them if the night time is 'the right time', and for the first time the crowd knows that they're singing about and Security has to start moving in.

Then silence as a mark of respect for the Music Industry. 'Bauhaus' look the audience straight in the eye and start up the intro to their single: 'Ziggy Stardust'. Confident by chart success but shaky without a production crew, Murphy cries out the first 'Oh Yeh' wildly out of tune. People burst out laughing. For a moment Glam Rock turns to Sham Rock. But it doesn't matter, they get their encore and come back with

the right thing getting out now, while they're ahead. Too many bands, too little money.

Such a situation favours the supergroup, and bands like Tilbrook and Co. (as the albeit enthusiastic crowd of 1,200 in a 2,000 hall showed) can't viably compete.

Cool for Cats, Up the Junction, Pulling Mussels, Good-bye Girl and Annie Get Your Gun were excellent but they'd have been equally good on my record player at home, probably better as the lyrics were lost tonight. Tilbrook sounded like he was singing through a song — and that's a sad reflection on the band when a second mortgage is needed for your average concert ticket.

A live performance should rarely just report recorded material, it should be an event. Adam Ant realises that, Springsteen too. And Squeeze? Well, I've got more excited picking my teeth. A case of 'nice songs, shame about the songs'.

Enjoy the new singles compilation, (a fitting epitaph) but don't think you've missed anything here.

MARTIN WILSON

JULIE BRANDON

t • Sport • Sport • Sport • Sport • Sport • S

The Pole' axed Prima Donnas

Leeds University 1st XI2
Leeds Polytechnic 1st XI4

On a muggy Weetwood afternoon a fiercely competitive contest of 100 mile an hour football, sorted out the men from the boys as Leeds University slithered to a desperately disappointing derby defeat at the hands of a gritty, well-drilled, Leeds Poly outfit.

You could cut the atmosphere with a knife as the all-ticket crowd roared on their heroes. From the start the University surged forward in repeated oscillating waves and within ten minutes the home players were looking to heaven in despair as a flick by Inyama was touched onto the woodwork.

However, on the 20 minutes mark, the home crowd erupted as 'Prima' McDonough, the returning prodigal son, found himself in hectares of space, centimetred his way through the Poly defence and tucked the ball away.

Yet, after this, the Poly team, finger by finger, weakened the University's grip on midfield and soon levelled when their dazzling winger went clean past Persil, the left-back and clipped in a low cross for Lockhead, their balding marksman, to send a diving header looping into the net.

Minutes later the home fans were baying for the referee's blood when he

REPORT BY:
BRIAN GRANVILLE

ignored the offside flag of seasoned Colombian linesman, Tony Ponsford, allowing a Poly forward to race through unopposed and square for a simple tap-in.

The Poly augmented their advantage inside ten minutes when a rebound was converted after a brilliant save by the University's keeper, Johnson, who was working more miracles than Luis Palau (Hallelujah!) in keeping the homeside in the game.

Fifteen minutes after the restart an incident, which should have serious repercussions, rocked any decent football lovers in the crowd. After another incredible failure to give offside almost led to a fourth goal for the Poly, a University 'supporter', who I can only describe as a mindless lout, threw a ball-bearing, striking the referee on the back of the neck.

But Bristolian tea-boy, Dave Hussey, saved everyone's bacon by donning



● Pic V. Raane, 'Ref Floored' the black attire and took charge for the last half-hour.

The University gave up the ghost with 15 minutes to go when the Poly scored from a corner and an injury time headed goal by the University's own black pearl, Inyama, was purely academic.

Perhaps it is still not time for University Captain Matthews to press the panic button but he must prove that he can make a silk purse out of a sow's ear and turn the 110 per cent effort his team display into results.

That's football!

'Tetley fuelled sticks'

MEN'S LACROSSE

Rochdale 'A'0
Leeds Univ.26

This match, the opening round of the David Beesly Trophy, found Leeds drawn against the strongest side in the sixth division.

An exhausting midweek victory in the E.U.L.A. over Nottingham Univ. meant that Leeds took the field bristling with confidence, despite a last-minute team change. Fuelled with Tetley Bitter and free Trebor sweets they proceeded to rip the Rochdale defence to shreds.

The attack's precise and well-organized approach was a thankful contrast to last Saturday's 'shoot and hope' attitude. An expansive Rochdale pitch and improved team fitness aided the selfless off-the-ball running and creative use of space which totally overwhelmed the bemused Rochdale team. Sharp, accurate passes, skillful stick-handling and powerful shooting brought a constant flow of

goals past the cursing Rochdale keeper, and at no stage did the Leeds onslaught degenerate into a free-for-all amongst the attackers. A measure of the success of the 'Total Lacrosse' approach (to adapt a Brian Granville phrase) is that no fewer than seven Leeds players managed to score. Even defender-turned-goalkeeper Lawrence Whitworth came close to scoring on one occasion. He was particularly pleased with the achievement of keeping a clean sheet, performing with great assurance behind a miserly Leeds defence. Rochdale's attack, denied steady possession by the tenacious Leeds midfield, handled neatly but the crucial passes were always beaten down or intercepted. By the end of the game they had hardly even broken sweat.

Scorers: Davies 7; Paterson 7; Jones 6; Hubbert 2; McNeeny 2; Gray 1; Blythe 1.

HUW DAVIES

'BURXED'

Leeds Univ. R.U.F.C. 3rd XV29
Yarnbury4

Playing a weakened Yarnbury side, the 3rds romped home on Saturday scored six times. Solid scrummaging and good jumping in the line-outs by Brian M'Ginnity provided the Leeds three-quarters with ample possession. This was used to good effect and winger Richard Grant ran in four tries.

The first try stemmed from Leeds' complete territorial domination of the Yarnbury

25 yard area. As Yarnbury desperately tried to break out, an interception by Richard Leach provided an easy four points. Mark Ashcroft converted and Leeds were 6-0 up after five minutes.

After fifteen minutes the Yarnbury forwards were knackered (Northern word) and the 3rd fifteen pack's mobility allowed Leeds to win a stream of 2nd phase possession. With Mark Ashcroft (fly-half) looping with his centre's and full-back Ralph Hearnshaw continuously in the line, overlap after overlap was created.

Matters were made worse

for Yarnbury, when one of their three-quarters damaged ligaments in his knee and they were reduced to fourteen men. A try by Dave Capstick and penalty by Mark Ashcroft put Leeds further ahead and the game began to look one-sided. Tired and disillusioned Yarnbury players at one point couldn't be bothered to wait behind their own try line for the conversation, preferring to observe it from the halfway line instead.

Final score 29-4 to Leeds, the score reflecting the open running rugby of the 3rds.

PETER MITCHELL

'Unreserved!'

After six games Leeds Reserves have won a match, they beat Leeds Postal 2-1 at Weetwood on Wednesday.

Despite the closeness of the scoreline the University thoroughly deserved their win, only careless finishing keeping the Reserves tally down to two. Time and again good approach work was spoiled by either a poor final pass or a wayward shot. Fanning and Waterfield dominated the game but were as guilty as any when it came to marksmanship. The best move of the half did bring Leeds some reward, it was started and finished by Setton. He channelled the ball to Waller on the right who in turn set Sharpe loose down by the cornerflag. Sharpe's low cross was controlled and blasted home by Setton. At half-time Leeds were one up when it could have been six.

The second period saw the Post Office under a constant bombardment but as in 1916 the attack was ineffectual and the defenders held out well. Just when it appeared that the students would have to settle for just one goal the Postmen cracked. Setton made a break on the right wing and his centre was turned home by Quilty at the near post.

The Post Office pulled one back and at 2-1 the Reserves looked shaken, but captain Fanning got them going once more to hold on for a welcome victory.

On Wednesday Leeds Reserves play T.A.S.C. in the cup at Weetwood.

STEVE QUILTY

'Spirited'

Sheffield Poly.12
Leeds University13

Having suffered three defeats in the first three matches of the season, the team set out from Leeds with a firm dictum: 'Win or die!!'. Finding Sheffield's ground was the first obstacle to overcome, as it was sited about 12½ miles from the Poly. It was generally agreed that it would have been closer for both teams if we'd played at home!

Leeds conceded a try after five minutes. Undeterred, Leeds resumed the attack but basic errors in ball handling made the deficit 6-0 after fifteen minutes. A spirited fightback then took place, resulting in Dave Feeney breaking through three tackles to score — the try was converted by Ian Poynton.

From kick-off Leeds tried to run the ball out from their own 22 and were caught, resulting in another try for Sheffield. Half-time score: 9-5.

The second half started and after constant pressure, Martin Derry crashed through from 5 yards for another try which was converted by Poynton. Sheffield then played like men possessed, using their extra weight in the drives forward. Ferocious tackling by Leeds kept them at bay, but with two Leeds men injured after a clash of heads, Sheffield scored: 12-10.

The light was now fading fast and with the referee looking anxiously at the luminous dial on his watch, Leeds resumed the attack. After five minutes of concerted pressure, Nick Dickson scored a try in the corner: 12-13.

Sheffield never recovered and in the final ten minutes Leeds should have scored twice more.

J. M. NOONE

student
15% Discount
on all...
graphic supplies -
artists materials -
student
stationery -
MECANORMA
letter press.
Gledhill Graphics
Graphic Art Supplies
79, Great George St. Leeds.
(behind the infirmary, near the George Pub)
Open Mon - Fri
9-00am - 5-30pm

t • Sport • Sport • Sport • Sport • Sport • S

POLY VOLLEYED OUT

Mikasa Cup Senior K.O.
Leeds Poly 2
L.A.I. 3

Leeds Poly came close to causing one of the biggest upsets in the Mikasa Cup so far against local rivals L.A.I. of the 1st division. Against all the odds, the game went to 5 closely contested sets, with both teams losing concentration at crucial stages during the match.

The 1st set began nervously to 6-6. L.A.I. then romped ahead and took it to 11-7. Leeds Poly struggled to contain the quick attacks and the set finished 15-10 to L.A.I.

By this stage the Poly had begun to settle down, and then started the second set more confidently. They built

up an 8-5 lead with much improved back court play, especially from Andy Craig, who celebrated his 21st birthday in style.

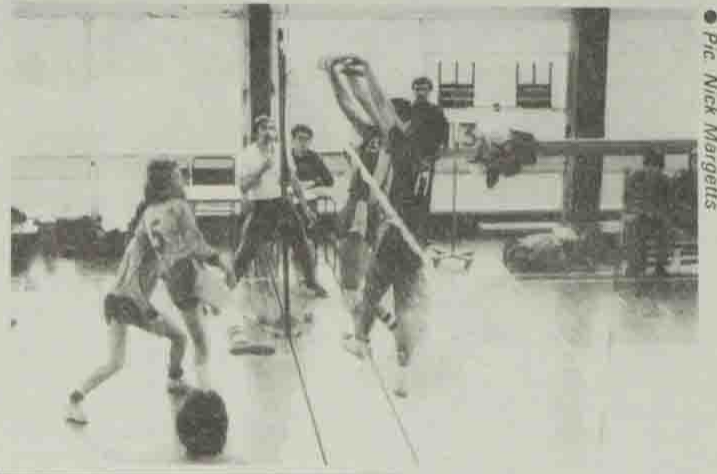
L.A.I. changed their rotation with 2 subs but this failed to benefit them and the Poly extended the lead to 13-5. The excellent play of the Poly was the dominating factor, and they took the set 15-6. The third set began well for L.A.I. with an 8-5 lead. Leeds Poly's first pass let them down, and L.A.I. capitalised on this to take the set 15-7.

Fortunately for the Poly, the fourth set was somewhat different, and they took a 7-4 lead before L.A.I. fought back to a 9-8 lead. At this stage some excellent rallies had the 48 spectators applauding every point. Services

changed hands several times without a point being scored. L.A.I. pulled away to obtain the match point at 14-11, but the Poly regained service with Andy Craig and Ian George at the net. They leveled the score and finally won the set 16-14.

In the fifth and final set Leeds Poly carried on where they had left off, taking a 7-2 lead. L.A.I. fought back using their two best players alone at the net. The Poly team could not control their hitting off the block, and L.A.I. pulled back to win 15-9 in a skilful and fast-moving game enjoyed by all. Their next home fixtures are on Saturday, November 20th at 6.00 p.m. and Sunday, November 21st at 3.00 p.m.

G. S. and S. M.



• Pic. Nick Margetts

CROSS COUNTRY VICTORY FOR POLY

In both the men's and women's races the Leeds team did exceptionally well in winning the first team positions. In the men's, Lines dominated the race from start to finish with a fine victory. He was supported well in 4th place by Croken, who only became detached in the final stages. After a slight problem earlier in the race Benson came in 5th to secure victory for the Leeds Poly 'A' team. Batchellor, returned to fitness to come in 6th closely followed by Trigg in 7th and Currie in 9th giving the Leeds 'B' team 3rd place. Other good per-

formances came from C. Jones in 10th, Travers in 19th and Bates in 20th place.

The ladies kept up the record with some fine running, notably from Lea who came in a clear second. Matheson supported her team mate well, finishing 3rd, and Rowbotham, making up the winning team came 5th, closely followed home by McDonald in 6th place.

With these victories in mind, the Leeds team can look forward to their next race in the Sheffield 'Eskafeld' league meeting.

STICKS AND STAFFS

LEEDS POLY II 4
NORTH STAFF POLY II 2

Both teams in this challenge were well-balanced for fitness and skill, but it was pressure in the goal area that finally yielded results. The Leeds team was allowed more shooting chances, and repeated mistakes by the North Staffs defence led to the goals that gave Leeds the match. Lindsay Riggot strengthened the Poly's position with two good goals.

But a fight-back in the closing stages of the game was not enough to shake Carnegie's lead. The two teams must now play off against Liverpool Poly for a place in the quarter-finals of the British Polytechnics Sports Association Cup Challenge.

NICK MARGETTS.



• Pic. Nick Margetts

'WATER SNAKES'

Leeds Poly Swimming Club.

The club began with a splash (gulp, Ed.) this term, with a closely fought match against the University club, who beat us by 4 points. However, on Saturday the Club beat Ripon St. John's convincingly by 46-38. Competition was fierce but touches of humour were added by the chanting of Ripon St. John's supporters, and the watersnakes made by the false start rope.

DERBY

Leeds Univ. 3rd XI 0
Leeds Poly. 3rd XI 6

As your correspondent was keeping goal for the University in this game, the report will be as brief and painless as possible. Some bad defensive mistakes and slack marking at set-pieces enabled a Poly outfit to run up a score that completely flattered them; University captain Walters was left to rue the chances both he and Downey put wide when well-placed at vital stages of the game, although he could not fault the amount of effort and workrate put in by most of his players.

GRANVILLE

LEEDS SNATCH WIN

Wakefield 1
Leeds Univ. 2nd XI 3

On Saturday, Leeds produced a brilliant second half display to completely destroy a strong Wakefield side. After falling behind to a short corner goal in the first half, a revitalized Leeds side equalized shortly after the restart from a short corner by Nutt. Parkinson 'poached' a goal to give Leeds the lead, then to cap a fine performance Damien added a third near the end.

The 2nd XI also defeated Thirsk on Sunday in the Cup.

STEWART SMITH

MEDITATE

(in your way)

Meditation develops your inner life and your deeper sensibilities gradually and naturally. It opens a new dimension of identity and individuality. It is not concerned with what you should be; it reveals what you really are.

A series of talks will be given on spirituality, psychology, consciousness, yoga, realisation and reincarnation as introductions to meditation

at

Room LG15, Arts Building
Leeds University

on

10th & 26th November

7.30p.m.

Admission free and without obligation.

SOCCER

Leeds Poly 3rd XI v 2
Hull University 3rd XI 1

Playing in difficult windy conditions, the Polytechnic dominated this game and should have come out winners by a far bigger margin.

Only some excellent goal-keeping and poor finishing stopped Leeds from netting several goals.

Hull pulled a goal back late in the second half after Dewsnip and Howick had eased Leeds into a comfortable early lead; but they never looked like really troubling a very sound Leeds defence.

Outstanding performances on the day came from McCoombe who controlled the midfield, and Fitzpatrick who commanded admirably at the back.

Leeds have yet to really 'click' this season but when they do their opposition had better beware ...

REVENGE IS SWEET

Sheffield University 1st XV 0
Leeds University 1st XV 3

Leeds travelled up to Sheffield hoping to make amends for last year and produced a good, though unrepresentative result.

The Leeds forwards, refreshingly dominant for over half the game provided a supply of ball which their backs had not known previously this season. But despite this, and looking by far the better handlers, the Leeds backs found it hard to create scoring chances as did their

Sheffield counterparts. Tackling was certainly a feature of the game, with E. Buck prominent in the centre, as was the referee's whistle which sounded with painful regularity, often bringing to a halt what looked like the beginnings of good, open rugby.

The referee also saw fit to disallow two tries, both of which appeared genuine to everyone else. The game was finally decided by an excellently struck penalty by N. Folland late on in the second half.

A. STIMPSON

OVERSEAS STUDENTS

SHIPPING AND PACKING OF YOUR EFFECTS.

T-Chests provided - Insurance arranged

Telephone: 432422

MARSLEY FORWARDING LTD.

87/91 MEADOW LANE, LEEDS 11.

DATELINE

Cinema

HYDE PARK (752045)

Until Sat. **Altered States** 8.40 and **The Stone Killer** 7.00 Late show, Fri. 11.00 p.m. Liza Minelli in **Cabaret**. Late show Sat. 11.00 p.m. Humphrey Bogart in **Conflict** (first time here) Sun. for 7 days **The Blues Brothers** 8.15 and **The Secret Policeman's Ball** 6.30 Following week **Porky's**.

COTTAGE ROAD (751606)

This and next week **Poltergeist** Sun. 5.00 cont., LCP 7.00 week cont., 5.30, LCP 7.30 Friday late show 12th, 10.45 **Dracula Sucks** (indeed).

LOUNGE (751061)

Until Sat. Pink Floyd **The Wall** cont. 5.40, LCP 8.10. Next week **Conan The Barbarian** Sun. 4.40, 7.10, week 5.40, 8.10.

TOWER (458229)

Until Sat. **I, The Jury** 2.45, 6.40 and **Body Heat** 12.40, 4.35, 8.40. Next week **Blazing Saddles** Sun. 3.00, 6.45 week 3.00, 6.45 and **The Wolfen**, Sun. 4.40, 8.25 week 1.00, 4.45, 8.25.

ABC 1 (451013)

Until Sat. **The Thing** Fri. 2.00, 4.40, 7.25, 10.10, Sat. 3.00, 5.40, 8.35, LCP 7.35. Next week **The Best Little Whorehouse in Texas**, Sun. 2.40, 5.20, 8.00 (LCP 7.20) week 3.00, 5.45, 8.30, (LCP 7.45).

ABC 2

Until Sat. **Porky's** 3.45, 6.10, 8.50 (LCP 8.00). Next week **The Thing** Sun. 2.05, 4.50, 7.50 (LCP 6.50), week 3.00, 5.45, 8.35 (LCP 7.35).

ABC 3

Until Sat. **Poltergeist** 2.45, 5.30, 8.30 (LCP 7.35). Next week **Five Days One Summer** Sun. 2.50, 5.15, 7.45 (LCP 7.05) week 3.35, 6.10, 8.40 (LCP 8.05).

ODEON 1 (430031)

Until Sat. **Piranha II - Flying Killers** (I ask you), 1.30, 5.10, 8.50 and **Silent Rage** 3.10, 6.50. Next week **Nutcracker**

ODEON 2

Until Sat. **Conan The Barbarian**, 2.35, 5.20, 8.05 (LCP 7.30). Next week **Entity** (no times).

ODEON 3

Until Sat. **Rocky** 1.45, 6.10 and **Rocky II** 4.00, 8.25. Next week **Conan The Barbarian** (no time).

LUU FILM SOC.

Fri. 5th Nov. **Strike** (Russia 1924), Rupert Beckett LT. Tues. 9th Nov. **Germany Pale Mother** (WG 1980), Roger Stevens LT 21.

Fri. 12th Nov. **Swept Away** (Italy 1975) RBLT (All 7.00 p.m.).

LUU ENTS VIDEO

Sun. 7th **Time Bandits**. Mon. 8th **Every Which Way You Can** (Both Doubles Bar 50p, 8-ish?).

WORKSHOP THEATRE

Studio, Emanuel Inst. Tues. 9th, 1.00 p.m. **The Cabinet Of Dr. Caligari**.

Discos

BECKETT PARK

Disco and Bonfire Party Friday 5th, FREE.

POLY DISCO

Big Roadshow Disco City Site, PDS Disco, 8.30-1.00 a.m., 60p Bar and Food. Sat. 6th.

ROCK DISCO

Poly City Site, 8.30, 50p bar until 12.30, food, Wed. 10th.

BRUNSWICK TERR.

Librarianship Disco, Thurs. 11th, 60p Bar until 12.30.

COMB./BIOCHEM.

Combined Studies and Biochemistry Soc. Disco, Nov. 10th, 9.00 p.m. to 1.00 a.m. The Merrion Suite, Tickets 60p.

RUB CLUB

Reggae and Soul Disco, Kent Lounge, 7.00-11.00 p.m. every Friday, Members 50p, non-members 80p.

TEXTILE SOC.

1982 Ball, 19th Nov. Metropole Hotel, King St. 7.30 p.m. to 2.00 a.m. (Formal dress) Tickets on sale at

Man-made Fibres Building lunchtimes. Members £8.00, non-members £9.00.

LABOUR CLUB

Disco, Tues. 9th, Tartan Bar, late bar. Members 30p, non-members 50p.

SOUL SOC.

Disco, Fri. 5th Doubles Bar. 8.00 p.m. to Midnight. Late bar (again).

FUEL SOC.

Disco, Doubles Bar, Wed. 10th, 8.00 p.m. to Midnight, Bar till 11.30 p.m. 50p.

PSYCHOLOGY SOC.

Party, Thurs. 11th Nov. Doubles Bar. 8.00 p.m. late bar. Members 40p, non-members 60p.

BALLROOM DANCING

Soc. Barn Dance, Tues. 9th. Music by 'Oscar the Frog'. Refec. 8.00 p.m. late bar £1.00 on door.

REGGAE

Evening, Nov. 5th, Disco and Plansmen, Tartan Bar. 60p.

Theatre

GRAND (459351/440971)

Nov. 8th to 13th, The National Theatre in G.B. Shaw's **Major Barbara**, 7.30p.m., Sat. 4.00p.m. and 8.00p.m.

PLAYHOUSE (442111)

Until Nov. 13th, Tues. 8.00 p.m. Wed. to Sat. 7.30 p.m. Alan Ayckbourn's **Taking Steps**.

CIVIC (462453)

The Owner Of Redfields, by F. L. Cavy, until Sat. 6th.

AT THE POLY

Thurs. 11th Nov. 8.00 p.m. Tryad Theatre Co. **The Lost Honours Of Katharina Blum**, from the Heinrich Boll novel. Tickets from Central Library, Poly Drama, Poly Info Point.

Misc.

POLY HAPPY HOUR

City Site 7.00 p.m. to 8.00 p.m. 60p per double, Mon. 8th. Beckett Park, 7.00 p.m. to 8.00 p.m. 60p per double, Wed. 10th.

RAPID PIPS

Band, Beckett Park, Tues. 9th, FREE, late bar.

FORD MOTOR CO.

and LUU Economics Soc. present: **'Project Sierra'** a marketing talk by Director Keith Prickett with films and slides. Rupert Beckett LT Thurs. 11th Nov. FREE 5p.m.

RHYTHM METHOD

Jazz and funky dance music, Shines Bar, East Parade, Leeds, every Monday, FREE.

ARCH. SOC.

Thurs. 11th Nov. LT 10. 7.15. **'Are towns really necessary? - Britain 200 BC-AD 1000'** by Mr. R. Reece.

CAV. TABLE TENNIS

Tournament, 5th Nov. 7.30 p.m. in Common Room. Booze and Fireworks. Free food. 75p.

LUU REVUE

First rehearsal to workshop material. Mon. 8th, 7.30 p.m. in Riley Smith Hall.

GROUND ZERO

Band, Sun. 7th, Tetley Bar, LUU, FREE.

WHITE ELEPHANT SOC.

Group Captain. A. Townend speaks on Boeing 747 in LT20, Nov. 9th, 6.30 p.m.

CHINESE SOC.

Wed. 10th film show, 6.30, Rupert Beckett LT. Members £1.00, non-members £1.50.

SPACE EXPLORATION

Soc. Meeting about visit to British Aerospace at C3 Henry Price, 6.00 p.m. Nov. 10th.

BONFIRE PARTY

Fri. 5th, 9.00 p.m. at Lupton Flats, Alma Road.

SOVIET JEWRY

Speaker on religious repression and emigration applications. Tues. 9th, 8.00 p.m. Hillel House.

LUU MUSIC SOC.

Windband Mon. 8th, 5.00-6.00 p.m. in Great Hall. Players of all standards welcome.

JUSTICE & PEACE

Discussion on unemployment at Catholic Chaplaincy, Nov. 10th, 1.00 p.m.

CONSERVATIVE SOC.

Policy meeting, Mon. 8th, 1.00 p.m. Committee Room B. Social meeting in the Coburg, Tues. 9th. Speaker Geoff Davison (Nat. Cmtee FCS).

PARACHUTING

Free introductory talk and video show on parachuting in Roger Stevens LT 7. Thurs. 11th, 7.00 p.m. Followed by a

cheese and wine party in RH Evans Lounge. Tickets 70p members, £1.00 non-members from the committee.

PARACHUTE CLUB

Meeting Wed. 10th, 1.00 p.m. in Faversham.

COLLEGE OF MUSIC

Overture Semiramide by Rossini, Bassoon Concerto by Weber, St. Anthony Variations by Brahms, Don Quixote by Strauss, 7.30 p.m. Sat. 6th, Leeds Town Hall. Students half-price in advance from College of Music, Woodhouse Lane. College of Music Chamber Choir - Missa Aeterna Christi Munera by Palestrina, Let God Arise by Handel, Mon. 8th, 8.00 p.m. at St. Anne's Cathedral. (Students £1.00).

Paul Rutherford Trio - Celebrity Jazz Concert, Wed. 10th, 7.30 p.m. Institute Gallery, Cookridge St. Students £1.00.

WOMEN

Talk on pornography, Tues. 9th, 5.00 p.m. Women's Centre, Flat 14, 23 Cromer Terrace. Women's Action Group, Wed. 10th, 1.00-2.00 p.m. at the Women's Centre.

Women's Week Planning Committee. Thurs. 11th 1.00-2.00 p.m. at the Women's Centre.

Siren Theatre Co. (Women's theatre group), Thurs. 11th, Emmanuel Church, Woodhouse Lane. £1.50 waged, £1.00 unwaged. 8.00 p.m.

THIRD WORLD FIRST

Mon. 8th, 1.00 p.m. group meeting in RH Evans Lounge. Speaker Professor Nixon.

IMPORTANT S.G.M.

Wed. 10th, 2.00 p.m. in RH Evans, film 'Malawi - The Women'.

WORKERS AGAINST RACISM

Picket DHSS Offices, 37-39 St. Paul's St., Leeds 1, Nov. 12th, 12.00-2.00 p.m. (Stop Race checks and defend NHS).

Demonstration against all deportations (support Afia Begum and Basil Gwatidzo). Sat. 13th Nov., in East London. Minibus, LUU Steps, 7.00 a.m. and Leeds Trade Club, 7.15 a.m. prompt.

LEEDS UNITED

Home to Charlton, Sat. 6th, 3.00 p.m. (Come if you're not banned).

again please let me in. From a sweet transvestite but more Dizzy than A/C.

Dai and Slob have discontinued naughtiness until further notice.

Phil Reed at Roundhay - who needs the Stones?

Happy 21st Jane - the DJ and Taff.

Discreet Enquires Inc. Vinny Spillane and Tram Travis. We will investigate for the usual fee plus expenses. Anything considered, no stone left unturned in the cause of peace and justice. No divorce work. Box No. 1 c/o Rag Office.

Mike who?

Did you know your editor (ie. SUE) has a fang fetish! Love and bites Bride of Dracula!

Al Capone - a short, fat Italian says 'Get Vinny Spillane a contract!'

Crunt - enjoy your birthday present (but try to keep me awake this time).

Sandra wears ankle warmers after only two nights.

"Ron, how much do you think Mick Ferguson's worth?" "Don't know, Howard."

Adam's got a personal.....

Classified

STOMPERS
STOMPERS
STOMPERS MOBILE DISCO
LEEDS 620385

Work in America
This summer with BUNAC. Information available every Friday 12.30-2 p.m. LUU Extension at the BUNAC Table.

NIGHTLINE
Someone to talk to from 8pm-8am every night of term. We are a student-run, completely confidential telephone service - 442602

DOUBLE GLAZING
For only £2.50 using heavy-duty clear polythene sheets 2m x 2.5m - send cheque to 'Dohm', 24 Moorland Road, LS6.

RECORD COLLECTORS
Fair Sun. November 21st 11am to 5pm Astoria Centre, Roundhay Road, Leeds 8. Full details Leeds 687572.

Personal

ADIDA never tell till God made SPLAMI (Nashe)

Congratulations Geography - Top of the League.

HBDY MORPHEUS! Love Gluth and the General.

WANTED - Barrett house complete with gift-wrapped husband for 21st birthday. Apply Rm. 4, 32 Kelso Rd.

SHIRLEY - I LOVE YOU! The man in the sack.

To my darling Jane, Happy 21st. Ily, how did they built the Pyramids?

Barry, are you really 42?

Ian 'Subbuteo-head' 2 Rest of the World 0

Spit the Dog and supporting cast at 113 now.

Den.... You can grope my tits anytime!xxx

F**k off old boot - love old boy.

Ian-perforated Cosifits half-price at Tesco! (spla)M

We love you Crunt - but do you believe us?

Pat, the BSc stalker of Headingley seeks companion stalker - preferably BSc.

One-night cyclist, profoundest apologies - The General

Happy Birthday Animal 21. mental age still lagging!

Phil REED - a man of sorts!

Happy Birthday Den, oodles of love, the Gang.

Mrs Campbell - Smith's blue-eyed boy is here.

Any more tries for the Irish Wonder?

Happy 21st Chas - good luck with the polo!

More spare blubber than Michelin Man - 113

Andy (A2.3. Lupton), where have you hidden the magazines?

DUEL! ADIDA versus SPLAM. Sunday at dawn, Woodhouse Moor. Choose your weapons! Sal's are built-in are yours?

Crunt has nice areas!

Kez - Ta for the last two, here's to the next few. Spider.

Fiona ditches Ian for an External affair.

Phil Reed and Dave Hackett-Marathon Men!!

B.L. STRIKES AGAIN number 12 of the season.

Second-hand tea bags for sale at thrifty prices - see Ann.

Do you know what's happened to Neil Thomas?

Crunt - have fun with your present - but try to keep him awake this time.

CAS ? Do you keep a spare stick-on chest in your suitcase? Guess who?

Jane - the 21st Pyramid will be completed on Nov. 5th. But how? Answer supplied on Nov. 4th. Luv from the Pharaoh!!

Happy Birthday, Rampant Stallion, love Fluffy Bunny.

Congratulations Ian. You've found a girl at last!

URGENT. Goalkeeper needed for Law soccer. Contact Dave Hewitt (Law).

CATH - What will Steve uncover this weekend when he meets the sluts - a sweet transvestite?

All Phil Reeds appearing in this column contain all permitted artificial colourings and preservatives.

To our resident pant-shitter, Face it mate, Mick Green is FAT.

Alex, you're now 21!!!!

Smoothing oil on your feet was such a thrill, Fiona my dear you were dressed to kill. With your long black locks and your silky skin. When I come

LEEDS UNIVERSITY ARCHIVES