



生生大酒樓  
**SANG SANG**  
CHINESE RESTAURANT  
• FULLY LICENSED •  
7 The Headrow, Leeds 1.  
we specialise in  
Cantonese food  
Variety of Tim Sum snacks  
Excellent atmosphere  
and service

# ASBESTOS SCARE

## *Killer dust found in boiler rooms*

Dangerous blue asbestos was discovered in the University Boiler House in the summer vacation despite assurances to the workforce there that the pipe lagging was a composite mix containing no asbestos.

Sources inside N.U.P.E. informed Leeds Student that management had told the workers for several years that there was no asbestos in the boiler house lagging.

However when twelve samples were subsequently taken from the pipe lagging in the Central Boilerhouse they were subsequently found to contain asbestos. **REPORT**

Although the asbestos was not discovered until routine maintenance was carried out a report was completed six years ago detailing the locations where the asbestos had been found around University environs.

While Mr. K. Everett the University safety officer refused to give Leeds Student a copy of the report we have obtained one.

The report however lay dormant and had not been circulated amongst the workforce who could have easily taken the necessary precautions for dealing with asbestos much earlier. When a specialist firm was

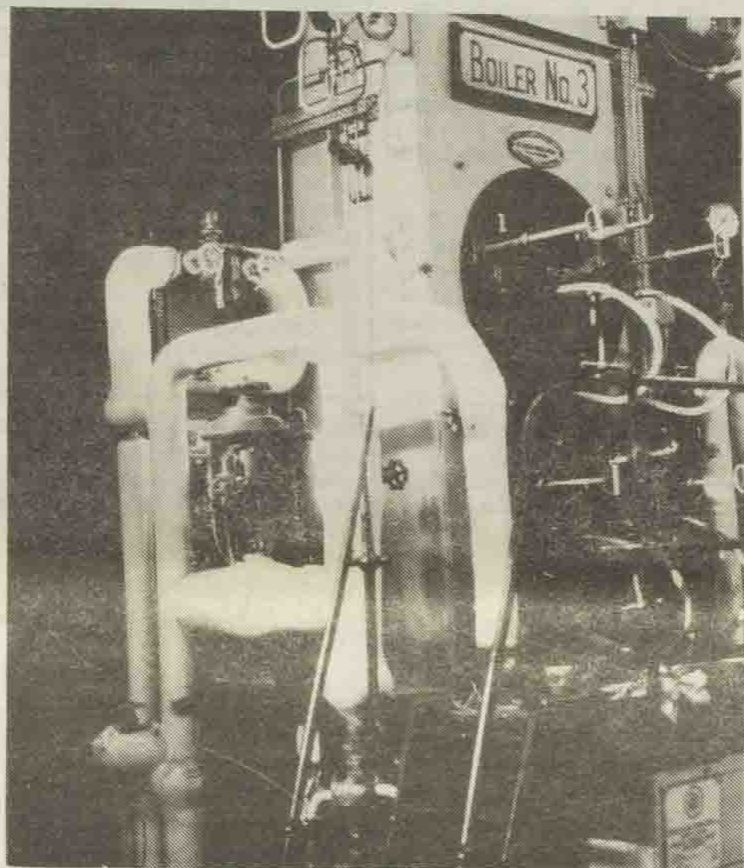
called in by the University after the asbestos had been discovered the workforce were only provided with masks for protection.

According to 'Asbestos Killer Dust' published by B.S.S.R.S. Publications simple gauze masks are virtually useless in terms of protection offered, and the safest protection comes from using an independent air line or oxygen supply.

The World Health Organisation stated in 1977 'At present it is not possible to assess whether there is a safe level of (asbestos) exposure below which an increased risk of cancer would not occur.'

The 1977 University report details where the asbestos is and what sort of asbestos is present, whether blue, brown or white. Asbestos is present in a number of halls including Charles Morris, Ellerslie and Sadler Hall. There is no danger from this as asbestos is perfectly safe while it is sealed up, and the University have taken samples to ensure that safety levels are maintained, and old insulation will be checked.

The factory inspectorate have declared the boilerhouse to be clean after taking air samples there. **ADAM LEBOR**



University Boilerhouse. Pic by Kevin Powley.

## MINISTER VISITS

An on-the-spot invitation to Sir Keith Joseph to visit the Students' Union of Thomas Danby college was briskly turned down when Sir Keith visited the college last Friday.

The invitation was made by the President of the college Union as the Education Secretary made his way to the new teaching facilities in Roundhay Road.

Thomas Danby College suffers from severe over-crowding, with 600 students crammed into a refectory and Students' Union rooms at lunchtime, roughly twice the number the rooms will comfortably hold.

The Principal of Thomas Danby who was escorting Sir Keith on his visit is reported to have told him: "This is the place we do not like to show people," as he steered Sir Keith towards the spacious new college.

## FRASER WALKS OUT

Students gave a resounding 'thumbs down' to University's Health Service charge at the start of registration on Wednesday, forcing the stall in the Great Hall to close down early due to lack of interest.

Third-year students Nick Clarke and Trevor Thorne, who watched the proceedings at the Student Health desk, claim that only one student all day coughed up the five pounds that the University is demanding for 'special services' registration.

The University refused to confirm or deny the report. A Registry Office spokesman said that accurate figures of how

many students had paid up would not be available until a backlog of paperwork, usual at this time of year, has been cleared.

The lethargy of Wednesday's Health Registration was in contrast to a Freshers' meeting a day earlier.

Temperatures ran high when University Health Officer Dr. Iain Fraser walked out after delivering an impromptu speech attacking L.U.U.'s 'Health Student' fact-sheet.

The meeting in the Great Hall took place four times, once for each group of first-years. Six speakers were present giving

short speeches on Union matters.

At the first meeting, Dr. Fraser delivered his speech about Student Health refraining from any mention of the controversial Health Service levy. Following Dr. Fraser, Aileen McGloughlin, General Secretary of L.U.U., roundly denounced the £5 charge.

When the second meeting began, Dr. Fraser departed from his prepared speech and criticised 'Health Student' at length and in detail, clearly flustered by the whole incident. After finishing, he excused himself to chairperson Sally Ryder

and left the stage. He did not return for the remaining meetings.

Said Aileen McGloughlin, "Dr. Fraser's arguments were not very strong, but I was really thrown. Given the preconceptions that many first-years have about Students Union, what he said could have been very damaging to our campaign." Dr. Fraser has previously been very sympathetic to the Union, but Aileen said: "He feels torn between the two sides of the argument."

Dr. Fraser was unavailable for comment at the time of going to press.

**ROSS WELFORD**



# POLY SPARED AXE

At the beginning of last year the National Advisory Board (NAB) was set up to cover local authority education, its given purpose to ensure slack capacity is used more fully.

In the real world this means they have to begin to plan for cuts of an average 10% in the public sector for 1984/85. All PUSHE (Public Sector Higher Education) colleges and polytechnics have come under NAB's Axe and several polys have been singled out for a special attack.

Jim Miller, the Deputy President at the Poly,

believes cost conscious Leeds has got off lightly. No department has been closed nor courses lost but around £1 million has been deducted for 1984/85. In real terms this comes to around 4 to 7 per-cent and is only bound to affect educational standards: standards the Conservative Manifesto pledged to protect. As the Government has proved, in education as in health, promises are made to be broken.

In the Yorkshire region, Huddersfield Poly has been particularly hard hit losing 10% of their grant. The City of London, Central

London and Oxford Polys have suffered the severest cutbacks of all, losing students, staff and courses.

NUS is sending members to lobby the next NAB meeting in Eastbourne on the 15th of October. Back home in Leeds there will be a march from the Town Hall on November 10th with students coming from West Yorkshire, South Yorkshire and Humberside Polys. Union officials believe we cannot afford the continuation of student apathy much longer. Leeds Poly not RIP just yet. (OK)

ROB MINSHULL

## FEES SQUEEZE

Foreign governments are just not paying the fees for students they sponsor, says Leeds City Council Education Committee spokesman, Councillor Les Carter.

Almost £146,000 is owed to the council in unpaid tuition fees, mostly for Polytechnic students.

Nigeria is the worst offender, owing £85,700 approx. for eighty-seven students. Sudan, Libya, Kenya, Iran and Iraq also feature on the 'spending watchdog' committee's list of eleven

countries who have failed to pay up.

Education Chief, Councillor Bernard Atha is worried about the effect this will have on the students in question. He wonders if the council will ever take a decision to "jeopardise a student two-thirds the way through a course because the money has not been paid."

Councillor Atha says that overseas students who come to Britain are an invisible export and he has attacked the Government for making it so expensive for them to study in this country.

Meanwhile Councillor Atha has told council committees who want to interfere, and perhaps send foreign students with outstanding debts home, that they can "go to hell!"

JULIA KAY

## THREE THROWN OFF

A DISASTROUS start to term lay in store for three students when they arrived at the Polytechnic's business school to take a post-graduate course.

Matthew Lake, Ian Walker and Stefan Pompa were told by the course director, Sue Turnbull, that they were ineligible for the course because they had fallen foul of a minimum age limit of twenty-three. They were also informed that they "lacked the required supervisory level work experience."

They had all been accepted by the department after interviews in July and had paid a fees deposit of more than £300.

It is believed that breaking of the age and experience regulations is commonplace amongst polytechnics and that Sue Turnbull had gained permission from the Council for National Academic Awards to waive the rules and allow the students to register on the course.

However, the CNAA later refused to ratify any waiving of the regulations and insisted that all three could not take the course.

Ian Walker was informed by the CNAA that "it was wrong for students to suffer due to such errors and it was up to the Polytechnic to accept him back." The CNAA declined to comment on the matter.

Stefan Pompa and Matthew Lake have been allowed to join the part-time course but Ian Walker is insisting on continuing the full-time course.

ANDY HOWARD

## FALL OUT

A temporary bomb shelter will be built by L.U.U. in Dortmund Square next month as part of a five-hour 'nuclear event' Leeds City Council have decided.

The application to the council "to attempt to build" a shelter in accordance with the Government pamphlet *Protect and Survive* met with some opposition from Tory and SDP council members.

But despite objections the event will go ahead on Saturday, 19th November. It will feature a mock family of students who will try and build the shelter from tables, chairs, blankets etc. A small exhibition will be presented and leaflets handed out.

## POSTER PRIZE

On Thursday, 10th November, in conjunction with other National Union of Student area organisations and Polytechnics throughout Yorkshire and beyond, Leeds and West Yorkshire Area National Union of Students will be holding a demonstration against the Government's cuts in higher education.

LWYANUS is offering a prize of one £25 book token for

the best A2 sized poster designed for the event. It should be simple, powerful, and the design should leave about a quarter of the space free for further information on the demonstration. Only monochrome designs will be considered.

The closing date is Monday, 10th October. Further details can be obtained from: LWYANUS, 155 Woodhouse Lane, Leeds.

In a *Sunday Times* article, entitled 'Covering the student risk', Endsleigh Insurance compared favourably to two other personal possession policies offered by Harrisons and Barclays Bank.

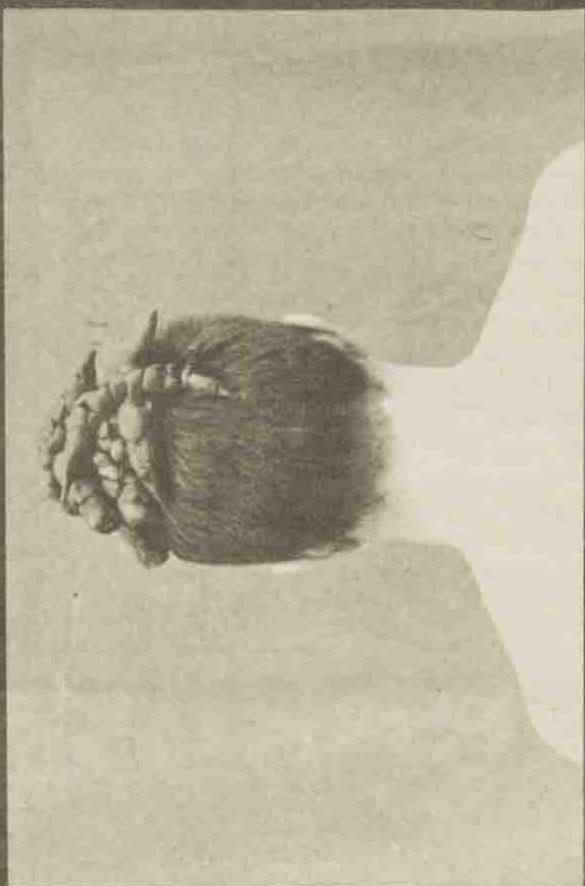
The article, printed in

## CHEAP ENDSLEIGH

August, found that Endsleigh's personal possession package for students was the best unless you happened to live in London, Liverpool or Manchester:

'Endsleigh looks the best all round and has a couple of useful additional features - cover for misuse of credit cards and £500 if the student incurs additional expenses as a result of an accident.'

# TIRED OF WEARING THE SAME OLD SHIT?



THEN VISIT  
X CLOTHES  
42, CALL LANE  
LEEDS 1. TEL: 454555





# BODINGTON

## No joke

# DOPE

# HAUL

The West Yorkshire Police Drugs Squad denied the report. Their spokesman told me, "You know it's not and I know it's not true". The Observer, though, is sufficiently confident as to the accuracy of its report not to print a retraction. Whilst the paper has printed a letter from University Information Officer David Morriss, stating the University's point of view, it still regards its report as essentially accurate. The colour magazine argues that one's interpretation of the article depends on what is meant by 'bust'. They say that 'bust' does not necessarily imply either conviction on drug offences, or police involvement.

John Rawcliffe, Senior Warden at Bod, denied that there had been any involvement at Bodington and his secretary described the whole Observer article as 'a fairy story'. In fact, so upset is Bodington about the Observer story that it hopes to obtain reimbursement for any money lost as a result of first years' reluctance to take up offers of accommodation. One anxious parent has already contacted the hall seeking reassurance on the issue.

So, if both the University and the police are confident that the report is concocted, where did the story emanate from, and why is the Observer so adamant in its stance?

Warden John Rawcliffe told me that he had contacted last year's Union President Mary Cassidy at one point during the year, expressing concern over allegations that dope was freely available in one of the Union bars. He then contacted the Drugs Squad for advice as to what proceedings he should take in the event of drug use becoming a serious problem at the University. He argues that he

never referred to a drugs problem at Bodington, and consulted Mary Cassidy and the police simply as a responsible senior member of the University taking steps to protect the University's good name.

This being the case, what was the Union doing when it told the Observer that fifty students had been bust at Bodington, for it would seem that the paper's story originated in the Executive office of L.U.U.

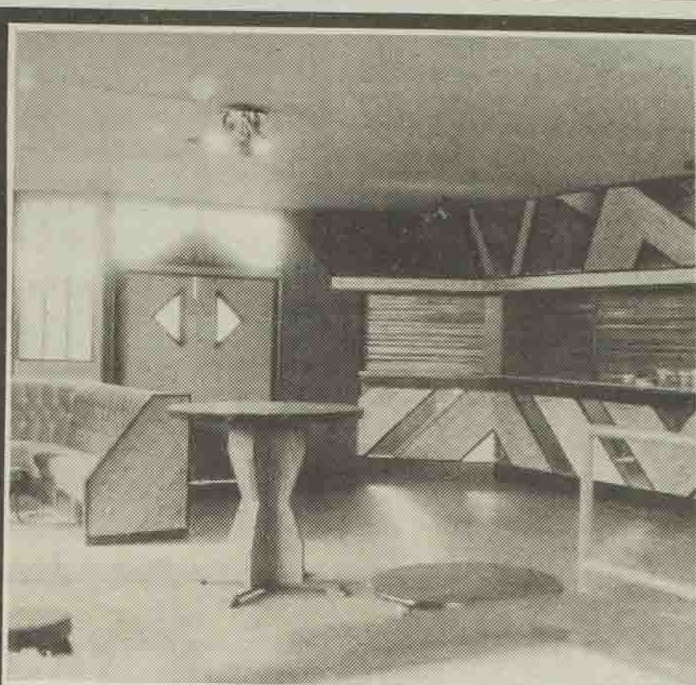
University and Union sources confirm that the Observer got the story as a result of routine research carried out via student unions nationwide.

If N.U.U. is guilty of such exaggeration, then it must accept responsibility for damaging the reputation of the student population whose interests it is elected to serve.

But this may not be the end of the story. Certain students claim to remember vividly the night when uniformed police arrived at the Hall's Hay House. Current Union President Sally Ryder told the University General Purposes Committee on September 29th that the Observer's allegation was not entirely fictitious.

What is the whole truth concerning the alleged Bodington bust? We have a right to be told.

TIM LUCKHURST



The Tartan bar has been redecorated and refurbished at the cost of £30,000. Fittings and fixtures are brand-new and give the place a bright and lively appearance.

With its built in disco and lights the Tartan bar still offers the Thursday night disco and is also available for societies for an evening at the cost of £10 a session. Events are hoping to extend the alcohol license to 2 a.m. and with the availability of food this place could soon be the Unions answer to a nightclub.

Stuart Galbraith, the Cultural Affairs Secretary, warns students to 'look after it' because with Union funds so low any damage will be considered irreparable.

HELEN SLINGSBY

## Lecturer dies

PETER SEDGWICK, who died tragically on September 8th, 1983 is not only a sad loss to Leeds University Department of Politics but to the fields of socialist politics, literature and psychology.

Before coming to Leeds University in 1973 he had worked as a psychologist at Liverpool University, as a tutor at a psychiatric prison, as a research psychologist studying brain-damaged patients at an Oxford hospital, and finally took up Politics as a lecturer at York University. He was a member of the Communist Party, but left in 1956 to join the International Socialists (S.W.P.). But he maintained his own critical and

personal approach and eventually left them in 1976, though he could find nothing satisfactory to replace them.

His great diversity of talent, his very individual character and his personal experiences with the mentally ill were influences upon his politics and his prolific writing. Peter Sedgwick will not only be remembered as a sensitive translator of Victor Serge, but as author of the recently highly acclaimed 'Psycho Politics'.

He was challenging to the student while respecting the individuals' opinions and will be deeply missed by students, colleagues and Staff in the Politics Department.

FRANCESCA BAINES

Racist Jokes in Leeds' Rag Mag have resulted in a ban on its sale in the University Union.

All jokes are vetted by the Rag Committee but an error during the proof-reading led to the inclusion of certain jokes not intended for publication.

A meeting of the Union's Executive voted in favour of banning it from the Union building. This accords with the Union's anti-racist policy.

Former Rag Treasurer and Secretary, Nigel Pepper, who is the External Affairs Secretary of the Union, said, "it's unfortunate but not disastrous". Sales of the magazine at the University were bad last year, anyway.

Condemnation of the magazine's content has been widespread. The President of the Union's Nigerian Society, Bola Ajomale, described the racist jokes as "most distasteful".

An anti-semitic joke brought similar condemnation from Marcus Sheff, Chairperson of Leeds University Union Jewish Society. "We are absolutely horrified that this racist filth that passes as rumour could be distributed in the union. An apology is not enough. If their explanation is not sufficient, the Jewish Society will help to ensure their removal from the Union."

John Gratton, Chairman of Leeds Student Charity Rag said that he may black out the offensive material and sell the magazines within the Union.

However, the Rag parade and the magazine selling trips to various towns near Leeds will go ahead as planned.

The first selling trip was to the Liberal Party Assembly at Harrogate two weeks ago.

Liberal Member of Parliament for Leeds West, Mr Michael Meadowcroft, called the racist jokes "appalling", "I used to lift jokes out of rag mags to include in my speeches but not anymore", he said.

Park Lane College of Further Education have also banned sales of the magazine and it is expected that the Polytechnic will do similarly next week.

PAUL BROMLEY

## New Union theatre

This term sees the opening of the new Raven Arts Theatre in University Union basement. The £43,000 project occupies the former debating chamber and can be found next to the Tartan bar.

Forthcoming productions include: Tikand Tok, Compass Theatre and T.N.T. Tickets will range from £1.50 upwards and will be available from the change kiosk outside the Tetley bar.

MARTIN HEFFER

**MECANORMA**

**15% STUDENT DISCOUNT!**

**GG**

**Cladhill Graphics**

Great George Street, Leeds LS1 3JR

Tel: Leeds 450024/5

**OASIS**

**HAIR STUDIO**

**10% STUDENT DISCOUNT**

**11 OTLEY ROAD, HEADINGLEY.**

**PHONE 789214**



## PAYING FOR HEALTH

For the last thirty four years the service provided by the University Student Health has been a free one. However following pressure from the University Grants Committee for 'selective economies' of 4% the University is introducing a charge of £5.

On 21st April 1981 the University Council considered a recommendation from the Advisory Committee on the University Health Service to charge a registration fee for the use of special services at student health - including Infra-red treatment, Physiotherapy equipment and Sick Bay facilities.

### FIGHT

A fee of £25 was originally proposed but the University Union successfully fought to reduce it to £5.

Students who live in University accommodation may pay the fee at the same time as they pay their accommodation bills. An important factor in the controversy surrounding the charges is the University Sick Bay. Without a sick bay the service would not be permitted to operate outside a two mile (approximately) radius of the University.

Subsequently the service might not include several halls and any students living south of the canal. Sick bay is also the centre for emergency and answering services.

Sick Bay costs £61,500 p.a., half of the University's Health Service's budget. The maximum figure which could be raised by

payment of the fee is only £20,000, therefore even if everyone paid the fee it would not cover half the cost. However, the principle that the "Special Services" provided must be paid for will have been established.

It is in the best interests of the University to maintain the services provided by Sick Bay, as it avoids the responsibility of providing sick bays in halls and flats. It also avoids administration problems when students are unwell - (they can take exams in sick bay).

### SPECIALIST

The implications of this are that students need a specialist type of health care. If this is in the best interests of the university, many students feel that the university and not the students should provide it. Rather than reducing costs students are expected to subsidise something which has obvious benefits for the university.

### CAMPAIGN

A campaign has been mounted by the Union, in an attempt to reverse a move which denies students the basic right to free adequate health cover. There are fears that the figure will not remain at £5, but will steadily increase and may possibly take on a compulsory rather than a voluntary status as has happened at the universities of Hull, Reading and Birmingham. It is also possible that this is the first of a series of cuts of vital student services such as sports, general amenities and the Careers Service.

### REFUSAL

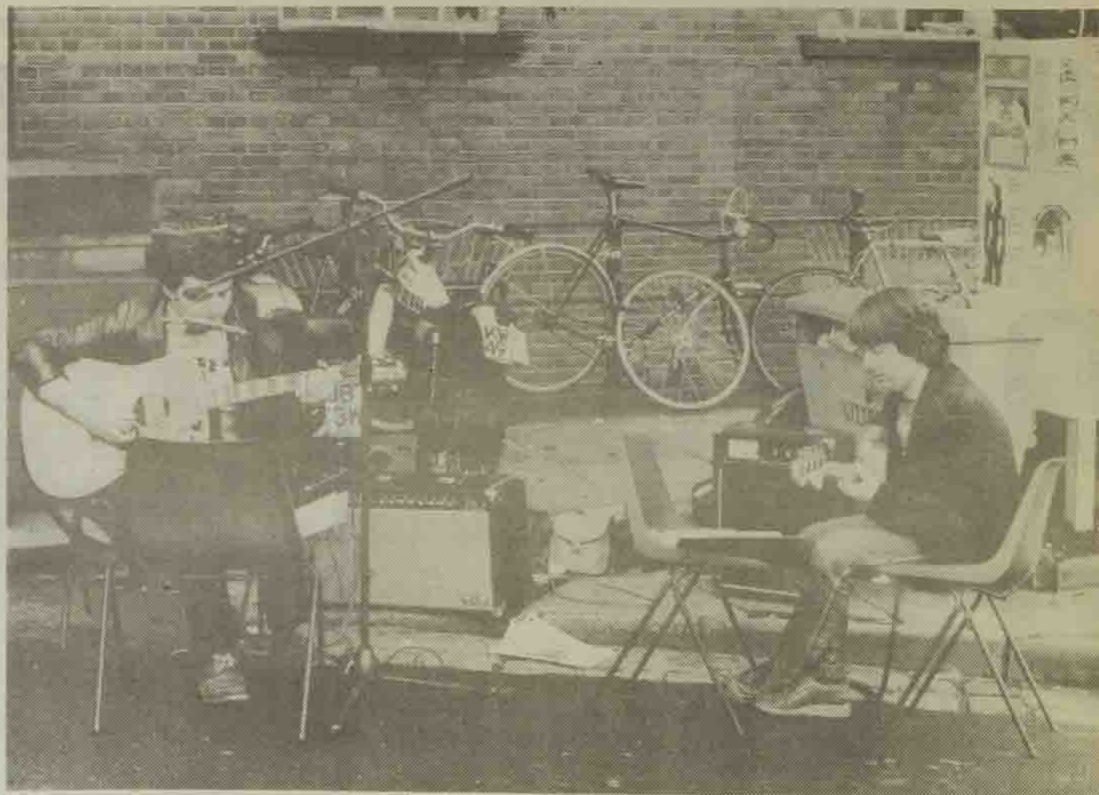
The University has refused the requests of the union to look together at real priorities for the

long term future of Student Health.

### G.P.s

For the majority of students Student Health is not the most accessible surgery and as shown by the lists drawn up by the Union, many independent G.P.s based in student areas are willing to accept new student patients onto their lists. A comprehensive news sheet has been produced by the Union explaining the full implications of the £5 registration fee which is not levied at the majority of universities, a map and a list of alternative G.P.s in the Leeds 6 area. Canvassing of University is taking place to try to inform students of the form of private medical insurance which is being presented to them as an attractive cut price deal.

DIANE TAYLOR



## PLAYING FOR HEALTH

A musical twist was given to the campaign against the health service when, on Monday, buskers from the College of Music played outside the entrance to the University Union building.

They had been invited by Martin Glancy, the Publicity Secretary, to attract even more attention to the first major campaign of the academic year. He has already produced posters and a comprehensive newspaper on the charge which is compulsory to all students living in University owned property.

The campaign can be seen to be directed primarily at first year students, the majority of whom, unlike second and third

years, live in University accommodation. However, for the campaign to have any measure of success, students from every year will have to heed the Union's call to boycott the charge.

The musicians, Clive Pearce on bass and Peter Galpin on guitar, failed to demonstrate in their musical style the rancour and excitement that is being generated in the political arena. Obviously accomplished musicians, they played a selection of hazy, laid-back jazz/blues numbers which though aesthetically pleasing seemed incongruous to the rest of the campaign.

GRAHAM WALL

## intime disco

MERRION CENTRE, LEEDS 2

Tel: 439166 after 9.00pm  
or 737545 day

OPEN TUES - SUN ★ 9pm - 2am

AVAILABLE FOR PRIVATE  
HIRE TUES & WED

(HALF PRICE FOR STUDENTS)  
BIRTHDAYS, SOCIETY PARTIES  
OR ANY CELEBRATION

HALF PRICE ADMISSION TO  
DISCO BEFORE 10.30 FOR  
STUDENTS SHOWING UNION CARDS

DRESS: SMART CASUAL

FULLY LICENSED 9pm-2am

**THE Dungeon CLUB**  
at **TIFFANY'S**  
Merrion Centre Leeds

**October**  
Tuesday 11<sup>th</sup> **PLAYDEAD**  
Tuesday 18<sup>th</sup> **HANOI ROCKS**  
Tuesday 25<sup>th</sup> **Beast**  
Sunday 30<sup>th</sup> **SEX GANG CHILDREN**

**THE FFORDE**  
THE FFORDE GRENE-HAREHILLS LEEDS  
A GREAT NEW SEASON AT THE "FFORDE" LI

**15 October THUNDERSTICK!**  
ADMISSION £1.50  
to come: VANDIS... RICHARD THOMPSON... DAVE KELLY...  
TICKETS: 10p (Thurs-Fri), 15p (Sat-Sun), 20p (Mon-Tue)

**8 October HAZE**  
7.30-11pm  
ADVANCE OR "SOUNDS" coupon £2.00  
DOOR £3.50

**14 October 'PERMAN' VERSION**  
7.30-11pm  
ADVANCE OR "SOUNDS" coupon £2.00  
DOOR £3.50

## forthcoming events

europeans & annabel lamb.... R.S.H.  
Monday 17th October  
£2.00

john cooper clarke.... R.S.H.  
Wednesday 2nd November  
£2.50

george melly.... R.S.H.  
Tuesday 22nd November  
£3.00  
.... and many more!



# Austicksforbooks

## Austicks Bookshops

welcome you to Leeds, and invite you to buy  
your books at our newly enlarged

### UNIVERSITY BOOKSHOP

21 Blenheim Terrace, Woodhouse Lane, Leeds 2

All subjects - texts and background reading - available

**Open Mon. to Sat. 8.45am to 5.30pm**

#### SPECIAL OFFER TO CELEBRATE OUR NEW SHOP -

The first 500 students to spend £5 on books will receive a FREE COPY  
of 'Mastering Study Skills' by G. Freeman.

### 1 University Bookshop

All Year text books, as well as a wide range of background reading. Any book not in stock ordered immediately by Special Order Service from publishers. Our expert staff always available to advise on your book requirements.

21 Blenheim Terrace,  
Woodhouse Lane.  
Monday to Saturday:  
8.45 a.m. to 5.30 p.m.

### 2 Students Stationers Ltd

For your note books, loose-leaf refills, refill pads, drawing paper, graph paper, drawing instruments, general and social stationery, greetings cards, newspapers, magazines, journals, maps, street plans, leisure reading, paperbacks.

172-174 Woodhouse Lane  
(opposite Parkinson Building)  
Weekdays: 8.30 a.m. to 5.30 p.m.  
Saturdays: 8.30 a.m. to 12.30 p.m.

### 3 James Miles (Leeds) Ltd

For antiquaries, second-hand books on a wide range of subjects, plus the largest selection of new book bargains in the North.

80 Woodhouse Lane.  
Monday to Saturday:  
9.00 a.m. to 5.30 p.m.

### 4 Polytechnic Bookshop

25 Cookridge Street - Monday to Saturday: 9.00 a.m. to 5.30 p.m.

For all the required reading at Leeds Polytechnic, and all colleges of further education in the city, plus educational stationery. Also large Map Centre and Business Stud Dept H.M.S.O. and Ordnance Survey Official Agents.

### 5 Medical and Legal Bookshop

57 Great George Street - Monday to Saturday: 9.00 a.m. to 5.30 p.m. (opposite Leeds General Infirmary)

Medical, Dental, Nursing, and Legal books for the student and practitioner.

### 6 Headrow Bookshop

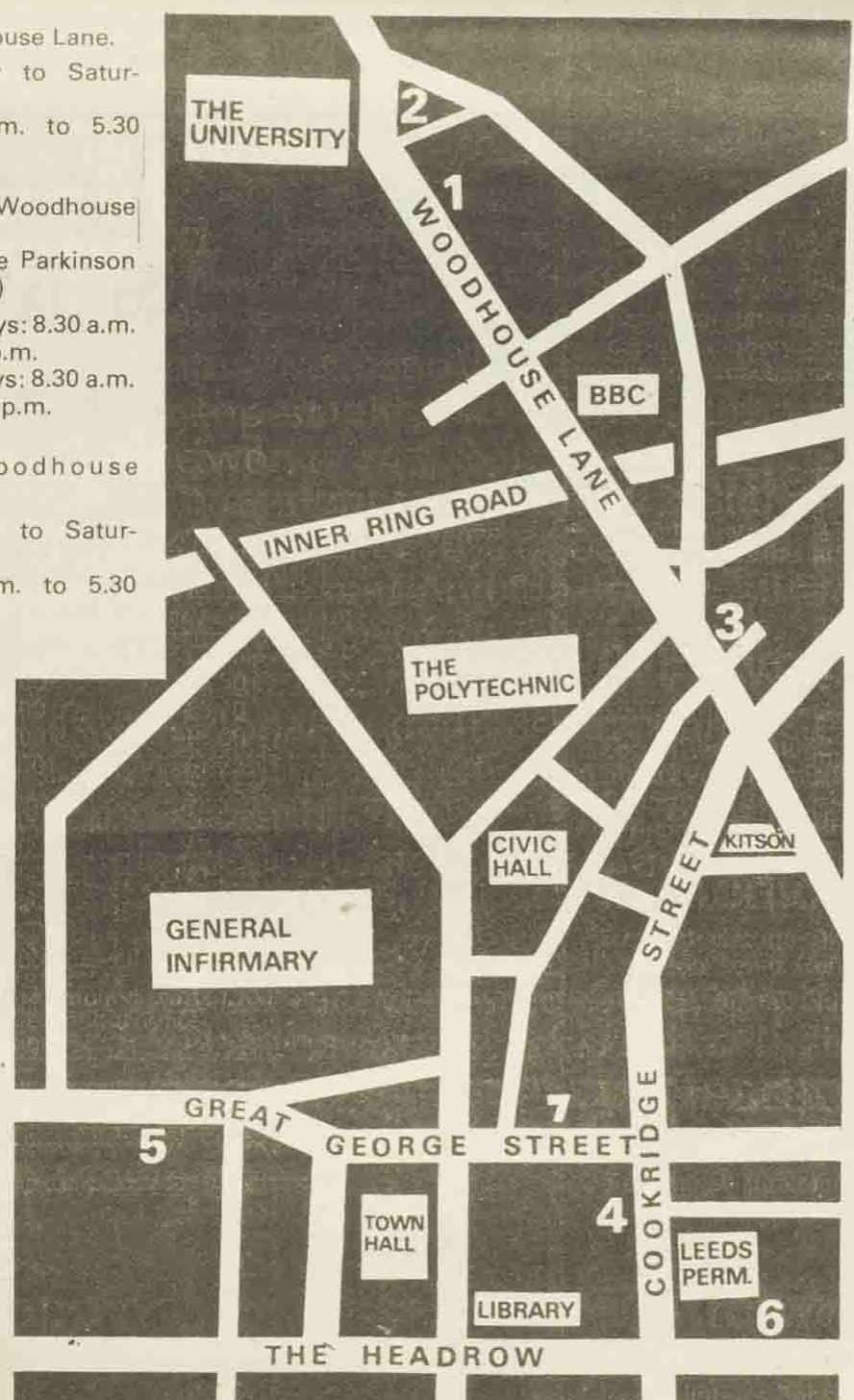
64 The Headrow - Monday to Saturday: 9.00 a.m. to 5.30 p.m.

For your Leisure reading - in a wide range of subjects - Art, Sport, Fiction, Biography, Transport, Humour, Hobbies, Crafts, and large Paperback Department.

### 7 Archway Bookshop

12 Great George Street - Monday to Saturday: 9.00 a.m. to 5.30 p.m.

Our Children's Bookshop.





# HELP YOURSELF TO FREE HEALTH CARE

## STUDENT HEALTH CHARGES?

### What they are

The £5 subvention has been introduced this year for 'Special Services' namely:

Infra-red treatment, Basic physiotherapy equipment, Sick Bay, Vaccination and immunisation medical certificates. Sick Bay is the most substantial of these services.

● All students can use normal NHS facilities free of charge by registering with Student Health or your local G.P.

● The original suggestion by the University was a £25 compulsory fee.

We have been successful in reducing it to £5.

● The fee is voluntary for those outside University accommodation. For those in University accommodation it is compulsory but the University has said that conscientious objections genuinely held will be respected.

### What we think about them

● The moral aspect. The whole question of private medicine is raised by these charges. Providing services not available to the local community and charging for them is private health care.

● The economic aspect - we think the University needs Sick Bay more than we do. It overcomes administrative problems when students are too ill to take exams and it means they do not need to provide mini sick-bays in University accommodation.

The fee will only raise a fraction of the cost of Sick Bay so the argument that the University will have to close without the fee does not stand up.

● The University needs Sick Bay for their own reasons. The money for it is a drop in the ocean to them. It is not a drop in the ocean out of a dwindling student grant. It is a matter of their priorities.

### What you should do

● If you live outside University accommodation - ignore the University's form. SIMPLY DO NOT PAY THE FEE.

● If you live in University accommodation - the charge will appear on your accommodation bill. It is completely separate from your accommodation charges. To support the campaign pay your bill less £5.

Then send a conscientious objection letter:

STANDARD LETTER:

The Deputy Registrar  
UNIVERSITY OF LEEDS

Dear Sir,

Re: Health Service Subvention £5.00 for Special Services.

I am a ... year student studying ..... I understand that allowance has been made by the University for those who object to paying the above fee on conscientious grounds, to be exempt from this compulsory charge. I wish to register, in this letter, a genuinely held conscientious objection to paying this subvention, and I trust that this declaration will be respected.

Yours faithfully

(Sign your name)

(Your name here in capitals)

to the University. For extra cover you can pay your £5 into the Student Health Fund.

Take your bill plus £5 to Finance Office or Executive in the Union Building. You will be given a receipt and if we win the campaign you will get your money back.

WE ARE PREPARED TO WORK ON YOUR BEHALF  
BUT WE NEED YOUR HELP. SUPPORT THE UNION  
CAMPAIGN!

## FOR YOUR LEISURE READING THIS AUTUMN

"SLOW BOATS TO CHINA" by GAVIN YOUNG. Penguin.....	£2.95
"SCHINDLER'S ARK" by THOMAS KENEALLY. Coronet.....	£2.95
"THE VALLEY OF HORSES" by JEAN AUEL. Hodder.....	£4.95
"CONSTANCE, OR SOLITARY PRACTICES" by LAWRENCE DURRELL. Faber & Faber.....	£2.95
"THE NON-BORN KING" by JULIAN MAY. Pan.....	£1.95
"THE CONE-GATHERERS" by ROBIN JENKINS. King Penguin.....	£2.50
"MERRY CHRISTMAS MR LAWRENCE" by LAURENS VAN DER POST. Penguin.....	£1.75
"THE COMPLETE NAFF GUIDE" published by ARROW.....	£2.50
"BODILY HARM" by MARGARET ATWOOD. Virago.....	£2.50
"STEVIE SMITH - A SELECTION OF HER POETRY" published by Faber & Faber.....	£3.50
"WHITE GOLD WIELDER" by STEPHEN DONALDSON. Fontana.....	£2.50
"GOOD BEHAVIOUR" by MOLLIE KEANE. Abacus.....	£2.95
"THE CORN KING AND THE SPRING QUEEN" by NAOMI MITCHISON. Virago.....	£4.95
"THE STONOR EAGLES" by WILLIAM HORWOOD. Hamlyn.....	£2.50
"NEW VOLUME" A COLLECTION OF POEMS BY ADRIAN HENRI, ROGER McGOUGH AND BRIAN PATTEN. Penguin.....	£1.50
"MIDNIGHT CHILDREN" by SALMAN RUSHDIE. Picador.....	£3.50

## GREENHEAD BOOKS LTD

THE BOND STREET CENTRE, LEEDS 1



# CINEMA

## THE FLYING SQUAD

BLUE THUNDER - Odeon

Out of the skies over Los Angeles roars Blue Thunder, a helicopter belonging to the Astro Division of the LA police force.

No ordinary helicopter though - it can fly at up to 200 miles per hour, fire 4,000 rounds a minute, and contains a laser-bright searchlight, video equipment and a computer display terminal.

Roy Scheider plays experienced helicopter pilot Frank Murphy, a man unsure of his mental balance. He is dogged by memories of his time during the Vietnam war when he flew combat missions, he has a patchy, volatile relationship with his girlfriend Kate, and he checks his sanity with his wristwatch.

His young co-pilot, Lyman-good (Daniel Stern), is just out of training school and, at first, finds both Murphy and Blue Thunder awe-inspiring.

They are provided with an opportunity to test Blue Thunder in the air one evening. And they discover a lot more than now the chopper works...

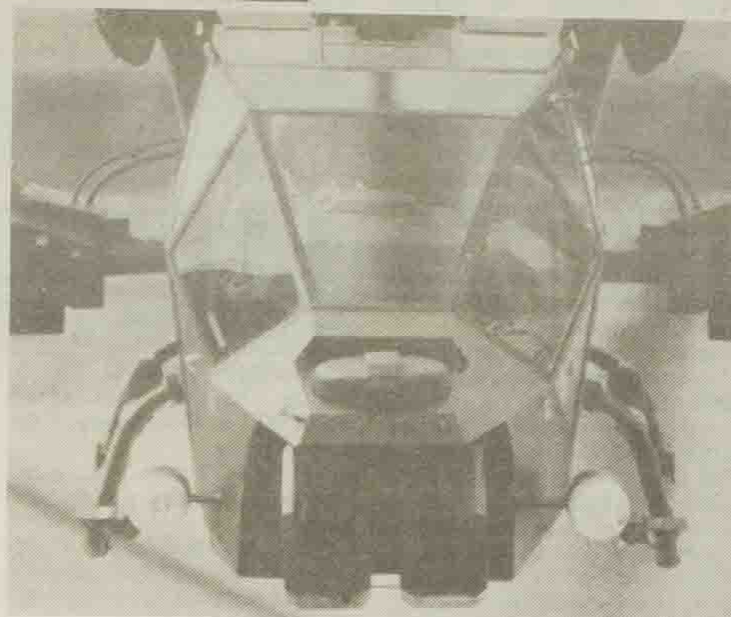
The special effects and

stunts are scintillating but it is all too frequent in action-packed films of this kind that the action shades the plot into insignificance. The linking scenes between the stunts are either thin to the point of non-existence or incredulous to the point of absurdity. Not so with Blue Thunder.

Operation Thor, federal agents, the local TV station and Cochrane (Malcolm McDowell), who flew alongside Murphy in Vietnam, all ensure that the tension never drops and the excitement never wanes.

The film gathers pace throughout until Murphy is being pursued by bomber planes and Kate on the ground by police cars.

Undoubtedly, the helicopter itself is the star of the film but Roy Scheider gives a fine performance as Murphy and manages not to be upstaged completely. However, if you are prompted to classify the film as fantastical or futuristic,



then think again. None of the Blue Thunder's weaponry has been invented for the film - it is all available in the United States.

It is a factual and amusing

film, but, at the same time, thought-provoking and alarming. Blue Thunder - it's a cracker.

PAUL BROMLEY

## SCREWBALLS - ABC

This is a fine example of a truly sexist film: one which belittles both sexes equally. Male and female are in states of permanent high blood pressure lust, but neither sex does much about it, so they remain in bulging-eyed, purple-faced attitudes of sexual frustration.

Instead of simply leaping into bed and getting on with it, they content themselves with fantasy and innuendo, deflecting their urges almost fetishistically away from the opposite sex (Purity Busch's masturbation session with her teddy-bear, mock oral sex in the French lesson with a model of the Eiffel Tower!). Or rather, their urges are

turned away from the normal sex act - the five heroes in particular channel their frustrations into uncovering as many pairs of breasts as they can.

And there, in a nutshell, is the whole plot of the film. Miss Purity Busch, the Homecoming Queen (we are, of course in an all-American High School) is sexy but stand-offish, so, to teach her a lesson and also to achieve some peculiar voyeuristic pleasure, our heroes resolve to get a look at her tits.

They go to inordinate lengths involving mass hypnosis, burying themselves in sand to catch her sunbathing, and breaking into her house.

After all five individual endeavours fail, the boys team up to sew wire into Purity's Homecoming dress. At the height of the ceremony in the school gym, they turn the basketball posts into giant magnets. The final shot is of Purity's hapless tits bouncing about in horror as her dress flies off. Ho Hum. Riveting stuff, eh what?

I seem to remember laughing about five times, but only for want of anything better to do. I suppose the most constructive thing one can say about this film is that perhaps it gives a peculiar insight into the American psyche.

S.M. FEAY



# BOOKS

### THE FONTANA BIOGRAPHICAL COMPANION TO MODERN THOUGHT

Fontana Paperbacks

£6.95

Hardback edition by William Collins Sons and Co. Ltd.

Although a Companion to Modern Thought has been compiled primarily as a work of reference, it can be readily browsed through as its information and unpretentious style of writing makes for easy reading.

In fact some of the 1,945 mini-biographies are perhaps too well constructed in that they readily interest and inform, but due to the limitations of space are forced to rapidly end, just when interest in the subject is rapidly increasing.

Each of the entries has been written by one of 300 contributors, an impressive list of professors, lecturers and specialists such as George Melly and Dillys Powell for the Jazz and Cinema entries.

The editors and compilers of the Companion to Modern

Thought have succeeded rather well in compiling and producing what is a very ambitious project. Their criteria for choosing whether an individual merits inclusion or not in a Companion to Modern Thought seems to have been fairly well considered and includes all those they consider to have made a contribution to over sixty fields of human endeavour and achievement.

Apart from encompassing the obvious ones of literature, art, politics, and academics these include, Popes, jazz musicians and Feminists. In short every household name is covered (depending on what sort of house you live in) from Lenin to Henry Moore to Thomas Wolfe.

Although its inherent limitations are obvious, a Companion to Modern Thought is a very useful reference work, and will give you ample information on all those names that your compatriots in higher education are sure to be dropping all around you!

ADAM LeBOR

### WHITE GOLD WIELDER

Stephen Donaldson (Fontana) - £2.50

Thomas Covenant, as you may know, is an Unbeliever. An Un-Lord, a disenfranchised leper. He is also the White Gold Wielder - possessor of the power of the wild magic.

This book marks the final chapter (or 21) in an extravagant double trilogy, a sh-pack of swords, sorcery and metaphysics. The Chronicles Of Thomas Covenant The Unbeliever. And consequently your options are limited.

If you, like me, have enjoyed the earlier tales of Covenant's adventures, then you too will have awaited this, the saga's apparent conclusion with eager anticipation.

And you will not be disappointed. All the imagery, complexity and internal conflict of the previous volumes are brought to an eminently satisfactory conclusion. The paradoxes are, indeed, reconciled and the final scenes leave room for a third trilogy.

If Donaldson's bank balances should require.

If, on the other hand, you are a stranger to the mysticism and wonders of The Lord of the Rings, then this book is not for you.

However, the uninitiated, the avid reader with a taste for addictive fantasy, would

be well advised to check out Stephen Donaldson. Start your assault on the first, cap-tivating volume, Lord Foul's Bane, and work your way through the whole compelling series. It won't cost as much as a single law book, and will be lots more fun. ROGER HOLLAND

## FREE TICKETS

SEVEN AND A HALF HOURS of rock cinema for FREE!!

That's the amazing offer from the manager of the ABC Cinema, Vicar Lane.

On Sunday week (16th October), there will be a 3-in-1 rock programme starting at 2.15 p.m. The three films are: Woodstock, The Song Remains The Same (featuring Led Zeppelin), Heavy Metal (with the music of Black Sabbath and others).

Leeds Student has five double guest tickets to GIVE AWAY in this easy-to-enter competition.

Answer the simple question below, fill in the details and hand your entry in to the Leeds Student office (opposite the Tetley Bar) in the University Union or in the newstray on the Leeds Student desk in the Polytechnic Exec Office.

All entries to be in by Tuesday lunchtime.

A full list of winners will be available from those two places on Wednesday lunchtime and in next week's issue of Leeds Student.

The tickets should be collected from the Leeds Student office in the University Union as soon after Wednesday as possible.

QUESTION: Name Led Zeppelin's personal manager?

Answer: .....

Name: .....

Address: .....



## Coming Soon

Stan Tracey is a veteran of the British jazz scene. His music, though not experimental, is very individual. He always surrounds himself with good musicians and his own piano playing is fascinating.

The Stan Tracey Octet is at Leeds Playhouse this Sunday (9th October) at 2.30 p.m.

The Playhouse has another impressive line-up of films to supplement its theatre programme.

Amongst the films booked by Andrew Youdell of the British Film Institute are:

**Blade Runner**, the futuristic thriller starring Harrison Ford. **Missing**, Jack Lemmon searches for his lost son in Chile in 1973 after the coup. **Pat Garret and Billy the Kid**, with Bob Dylan and James Coburn. It is directed by Sam Peckinpah.

**The Secret Policeman's Other Ball**. The Python team up to their usual tricks supported by the 'Not the Nine o'Clock News' team, Billy Connolly, Alexei Sayle...

**Reds**. Warren Beatty's portrayal of John Reed and the rise of socialism.

Tickets go on sale half an hour before the start of each performance and cost only £1.50.

A leaflet giving the full details of the films and screening times is available from the foyer of the Playhouse.

The Balinese Gamelan orchestra is a percussion orchestra. Such groups have rarely been heard here but perhaps the current interest in the percussion based African musics will also provide an audience for this Far Eastern music.

It can be sampled this week in Leeds. The English Gamelan Orchestra are playing at Leeds Grammar School, Clarendon Road at 7.30 p.m. today (Friday). They will perform traditional Javanese music and modern pieces written for this ensemble.

What do John Cleese, Peter Cook and Dudley Moore, The Goodies and David Frost all have in common?

They were members of the Cambridge Footlights.

You can see the current brand of mayhem from the Footlights on Tuesday week (18th October) in the Riley Smith Hall starting at 7.30 p.m.

Tickets can be obtained from the Theatre Box Office (the change kiosk outside the

Tetley Bar in the University Union) and cost an amazingly low £2.00.

Next Thursday lunchtime, there is an opportunity to hear a composition, the Sequenza for trombone, by Luciano Berio, in the University.

The Sequenzas are virtuosic explorations of the

potential of instruments as seen by a modern composer. It will be sandwiched by two fo J.S. Bach's Brandenburg concertos.

The concert features the ensemble of the University's Department of Music. It is at 1.10 p.m. in the Clothworkers Centenary Concert Hall and admission is FREE.

## Cinema

### HYDE PARK (752045)

Friday, October 8th, James Bond 007 in **Octopussy**. 7.00 p.m. nightly.

Late Show, Friday, 11.00 p.m. **The Blues Brothers** plus cartoons.

Late Show, Saturday, 11.00 p.m. **National Lampoon's Animal House** plus cartoons. Next... Monty Python's **The Meaning of Life**.

Coming... **Dark Crystal**, **Sophie's Choice**, **Staying Alive**, **Psycho II**, **Rocky Horror Picture Show**, **WarGames**, all for £1.30 and £1.50.

### TOWER CINEMA (458229)

**My Bloody Valentine**. Sunday: 3.15, 6.40. Week: 3.45, 7.00.

plus **Friday 13th Part III**. Sunday: 4.55, 8.15. Week: 5.20, 8.45.

### ODEON 1 (430031)

**WarGames**. Sunday: 2.00, 4.40, 7.20. Week: 2.25, 4.55, 7.35.

### ODEON 2

**Blue Thunder**. Sunday: 2.30, 4.40, 7.20. Week: 2.20, 4.55, 7.35.

### ODEON 3

**Breathless**. Sunday: 2.20, 4.50, 7.20. Week: 2.35, 5.05, 7.40.

### ABC 1 (452665)

**Stayin' Alive**. Sunday: 3.15, 7.15. Week: 1.40, 4.45, 7.55.

### ABC 2

**Screw Balls**. Sunday: 4.50, 8.10, LCP: 6.20. Week: 2.30, 5.40, 9.00, LCP: 7.10.

### ABC 3

**Psycho II**. Sunday: 2.30, 7.00. Week: 1.25, 4.25, 7.30.

**Three-in-One Rock Show**. Sunday, 16th October, 2.30 to 9.30 p.m. **Woodstock**, **The Song Remains the Same**, **Heavy Metal**.

## Film Society

### FILM SOC

Poly, Thursday, 13th October.

**The Choirboys**. 5.00 p.m. at H114. Membership £6.00 for academic year. Guest tickets from Union Info. Point.

### THE OTHER FILM SOC.

11th October, **Sitting Ducks**.

Info, 584-341. Trinity and All Saints College, Horsforth. £5.00 for year.

### LEEDS PLAYHOUSE

7th October at 11.15 p.m. **If**. 8th October at 11.15 p.m. and 9th October at 7.30 p.m. **Veronika Voss**.

## Television

Yorkshire Television programmes to be broadcast this week include:

**The Outsider** - Episode two of this mystery series is broadcast tonight (Friday).

John Duttine plays journalist Frank Scully whose arrival in the small Yorkshire town of Micklethorpe starts tongues wagging.

Scully finds himself becoming trapped in a web of romance, intrigue, and mysterious revenge when three different women begin to take an interest in his life.

**The Bounder** - Yorkshire Television's award-winning situation comedy stars Peter Bowles, George Cole and Isla Blair.

# WHAT

Tonight's episode at 8.30 p.m. involves a guard dog (an Alsatian to be precise) being brought to heel by Peter Bowles (Howard) when in fact he's barking up the wrong tree. Woof! Woof!

News from YTV - Emmerdale

Farm has been sold to New Zealand television.

It will be screened in 90-minute editions on Saturday afternoons so for a bumper-sized package of life on the farm in the Yorkshire Dales, emigrate to New Zealand.

## Discos

### UNIVERSITY

Saturday, 8th October. Progressive Rock Society. Non-members 60p, members 30p. Year membership £1.00 on the door.

### FRENCH SOCIETY

Tuesday, 11th October. French Society Disco. Tiffany's - the Merriem Suite. Tickets from Bazaar stall 50p.

### EVENTS DISCO

Thursday, 13th October. Tar-

tan Bar. Admission 60p.

### POLYTECHNIC - FANCY DRESS

Friday, 7th October. North Yorks Roadshow. Hall Pres. Fancy Dress - prizes. 10.00 to 12.30 with late bar. Admission 60p.

### POLYTECHNIC - DIZZY LIZZY

Saturday, 8th October. Dizzy Lizzy Disco in the Ents Hall. Admission 60p before 10.00 p.m. and £1.00 after.

## Misc.

### PROVINCIAL BOOKSELLERS' FAIRS ASSOCIATION

October 8th, Griffin Hotel, Boar Lane. A sale of antique and out-of-print books. 10.00 a.m. to 5.00 p.m.

### UNIVERSITY

Riley Smith Hall, University Union. 7.30 p.m. Edwin Heath, Hypnotist.

### UNIVERSITY LIGHT OPERA SOCIETY

Rehearsals for Christmas Show, **The Gondoliers** by Gilbert and Sullivan. 5.00-7.00 p.m. Friday, October 7th. No

chorus audition. Principal auditions on Sunday, October 16th. All Welcome.

### UNIVERSITY WOMEN'S CENTRE

Flat 14, 23 Cromer Terrace, Leeds 2. Lesbian Line, Tuesday, October 11th. Tel. 453588 for information.

Women's Action Group - Wednesday, October 12th. 1.00-2.00 p.m.

Women's Centre Support - Friday, October 14th. 1.00-2.00 p.m.

## Theatre

### LEEDS FRINGE

Until October 8th. City Varieties Theatre, Headrow. Rodent Arts Trust (RAT) in Joseph Kite's **The Assassin**. October 8th, 8.30 p.m. Leeds Youth Opera **Down in the Valley** (Kurt Weills), plus **The Penny Hedge**. October

8th, 3.00 p.m. For information Tel. 462453.

### TOP GIRLS

Top Girls (Caryl Churchill) at Leeds Playhouse. Starts 7th October, 7.30 p.m. Except Mondays.

**WON'T GET FOOLED AGAIN** By David Bromley. Adelphi

## LEEDS UNIVERSITY UNION

## ORDINARY GENERAL MEETINGS

This is the sovereign decision making body of the Union. Come along and have your say.

Held every

**TUESDAY at 1.00p.m. in the RILEY SMITH HALL** starting on Tuesday 18th October 1983

Details of motions submitted can be found on posters around the Union or on the Agenda available on the Monday before.

## RAVEN THEATRE

FRIDAY OCT 14th - £1.25

Doors 6.45pm

PUBLIC PROPERTY THEATRE CO

\*\*\*\*\*

THURSDAY NOV 6th - £1.25

Doors 6.45pm

COMPASS THEATRE CO

\*\*\*\*\*

WEDNESDAY DEC 7th - £1.00

Doors 7.00pm

THE NEW THEATRE (T.N.T.)

R.S.H.

TUESDAY OCT 18th - £2.00

Doors 7.30pm

THE CAMBRIDGE FOOTLIGHTS

- HAWIAN CHEESE PARTY - COMIC REVUE

ALL TICKETS FROM CHANGE KIOSK (& FOOTLIGHTS FROM JUMBO RECORDS)



# LEEDS

## AND HOW TO LIVE IT

### PLACES TO EAT

Even a poor student needs to eat occasionally and let's face it the average student is hardly a cordon bleu. So when you've cooked your last greasy beefburger, why not add a bit of spice to your culinary life and get out of the kitchen and into.

Leeds' wide variety of interesting restaurants. By following this guide to popular student haunts you will find places in which you can expand your tummy without stretching your grant cheque.

For those with asbestos mouths there are several cheap Indian restaurants around the University and Headingley area. Probably the best is the **Kaghan Valley**, on St. Michaels road. This is a place to suffer your self for less than three quid, with drinks included. Opposite the University are three similarly priced eating houses: **Naf-fee's Chakwell's** and the **Islamabad**. All three serve into the early morning and are therefore popular with the late night razzlers. Although the food is not too great, you will taste worse currys than these.

afield, visit **Shebab's** on Eastgate. Make this a once a term treat as the dishes are superb but the prices are high. Meals aren't rushed and come com-

plete with all the trimmings: hot flannels are given to wipe your face after each course.

As in every other city, Leeds has its own large collection of Bistros. In between the university and polytechnic is **Strawberry Fields**. It is split into two halves. Upstairs the decor is sparse, the menu limited, and the grub reasonably cheap (chilli con carne and bread around £1.30). Downstairs is slightly posher with a wider menu and more expensive prices. **Ron's Bistro**, opposite the Lounge in Headingley is well worth a visit. A three course meal with wine should cost around £5. It is often crowded which makes the service a bit like a production line. The pizzas etc are as good as any

restaurant in town with the exception of **Salvo's** just outside Headingley on the Otley road. **Salvo's** has recently been awarded the 'Le Relais Routier' award for good food and is obviously a good place to go if you've got time to queue. Also worth a visit is **Ikee**, punvegor of hamburgers to the hungry and cocktails to the thirsty.

American food is served at the **Boston Diner**, on St. Annes Road Headingley. A classy joint but it can be very expensive depending on your tastes. Cheap cocktails are

served at Happy Hour on most evenings.

The **Wharfe Street Cafe** on Wharfe street caters for vegetarians, usually with a selection of three or four meals. A good place to go for lunch if you are shopping by the market.

A vagrants guide to Leeds would include **Terry's All Time** and the **In and Out** as both are open all night. **Terry's** is a pretty squalid place and is definitely not recommended for those with weak stomachs. By comparison the **In and Out** is rela-

tively, specialising in bacon butties.

**Harpo's Pizza Takeout** in Headingley Lane is very good value, with a wide choice of pizzas and pasta and a selection of desserts, while **Theo's Charcoal Grill Takeout** over the road from the Parkinson Building has meaty, spicy kebabs for around a quid: a pleasant change from the Refec. If you're too damn lazy even to go to the takeaway, 'phone for a homemade curry delivered to your door.

Stuffing your face has never been easier.

### YOUR FOUR PAGE GUIDE TO STUDENT LIFE IN LEEDS

COMPILED BY: ADAM LEBOR  
ROGER HOLLAND  
JOHNNY CALVERT

### PLACES TO DRINK

Like any major city Leeds has a huge variety of drinking hostilities ranging from spartan alkies' bars to very plush rooms with velour furniture. As with decor, so with beer and Leeds Pubs offer anything from weak and watery Whitbreads to hand pumped Old Peculiar.

In the main Students frequent Pubs in Headingley, around the University and Hyde Park, but when these have palled a trip downtown can make a pleasant change from the Otley Road Pub-crawl.

Opposite Charles Morris Hall is the **FAVERSHAM**, offering handpumped beer, high prices, a trendy jukebox and trendier clientele. The Fav can get extremely crowded as it is extremely popular. This is also true of the **LITTLE PARK** which is usually packed out with locals as well as students. The Little Park has excellent hand-pumped Stones bitter and is very friendly.

Up the road towards Headingley are the **ROYAL PARK** and the **HYDE PARK** pubs. The former is full of hippies, bikers, and ex-students, the beer is O.K. and you will usually see someone you know there. The Hyde Park is one huge room where it can take ages to get served and lacks both atmosphere and good beer.

Further down the Otley Road you will come across those two student stalwarts the **SKYRACK** and the **ORIGINAL OAK**. The Skyrack is blessed with a pool table, bad beer although it caters for Geordies offering Whitbreads Scotch Ale. Across the road is the **Original Oak** haunt of the pressed jeans and Lacoste jumpers brigade, where the

young boys and girls about town congregate. On weekends the Oak can get packed both upstairs and downstairs.

Just past Safeways are the **NEW INN**, and the **THREE HORSESHOES** and the **WOODMAN**. The New Inn is a sort of up-market Original Oak with good Castle Eden beer and fake log fires. The Three Horseshoes which boasts hand-pumped Tetleys. Both are popular with students especially from the Poly. The Woodman is frequented by bikers and hairy heavy metal fans.

In the opposite direction along the Otley Road near the University lie the **PACKHORSE**, the **ELDON** and the **FENTON**. The Packhorse is a renowned engineers haunt and offers a wide range of music from up and coming local groups. Flares and beards are by no means obligatory, and the service is quick.

The Eldon is more of a locals' pub and is fairly run of the mill, but students are quite welcome. The Fenton is opposite the B.B.C. and is very popular with Poly students. Like the Packhorse and the Eldon the Fenton is a Tetley Pub with handpumped beer.

Just behind St. Marks Flats is the **BRICKLAYERS ARMS**, a John Smith's pub that has recently been refurbished.

Alcohol prices in Leeds are much of a muchness apart from the Faversham (expensive) and the Poly and University Union bars (cheap). Both the latter offer a good range of beers to get drunk on.

Generally students are quite welcome in the city pubs but there are one or two to avoid. Near the University is the **NEWLANDS** where trying to get a game of darts is not a good idea, and opposite the train station is the **SCAR-**

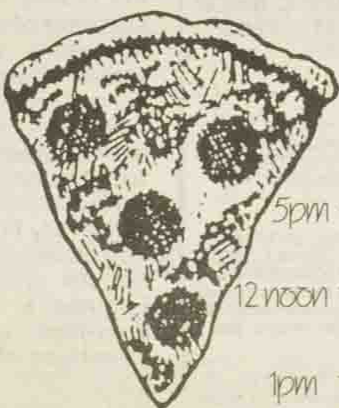
**BOROUGH** where people with very short hair and big boots hang out. The same is true for the **PRINCE OF WALES** and **GIACOMELLI'S** the deceptively suave looking Berni's underneath British Home Stores is also a place to avoid if you are a Manchester United fan.

Also downtown, just past the medical school are the **GEORGE** and the **VICTORIA**. The George is popular with medics and like the Victoria can get very crowded in the evenings. Slightly further afield are the **TOWNHALL TAVERN** and the **EAGLE TAVERN**. Both of these are free houses and well worth a visit. The Eagle has a wide selection of live jazz and folk music. Also to be visited is **WHITLOCKS**, Leeds' oldest pub with a variety of fine handpumped beers. A recent addition to Leeds is the **FOX AND NEWT** opposite Park Lane College and boasts automatic electric piano sawdust on the floor and its own 'Burley' and 'Query' bitters.

Very near the Merriam Centre are the **PIG AND WHISTLE** and the **COBURG**. The Pig and Whistle is an uninspiring city centre pub and the Coburg is one of Tetleys best money spinners being very popular with Poly Students.



**Harpo's**  
Original  
Pizza, Pasta  
and Burger  
Take-Out



Open

Mon-Fri  
5pm till Midnight

Saturday  
12 noon till Midnight

Sunday  
1pm till Midnight

23 Otley Road Leeds 6  
Tel. 782415

#### THEO'S

A quick and tasty range of  
Take-away Kebabs  
and Patisseries

164 WOODHOUSE  
LANE,  
LEEDS 2

Tel: 458641

Open Mon - Fri 11.30 - 2.30  
and 5.30 - 11.30  
Saturdays 6.00 - 11.30



# TOWN SOUNDS

Live music-wise, Leeds is a city and a half. With so many students, not to mention the native population, there is big money to be made from importing the big (and medium) names. Add to this the fact that the massed students occasionally throw up a medium (or even big) name themselves, and what you have is a city that is always dancing.

1. **The Warehouse** 19/20 Somers St. Leeds archetypal post-punk, new wave trendy night club. An unwelcoming exterior is more than matched by the interior and the atmosphere. A niterie to disturb even the most regular digestion, haunted by the worst sort of poseur: who only really go there to be seen there in the first place. However, it's usually well worth the irritation and the eyesore to catch some interesting, and sometimes marvellous acts.

2. **Brannigans** Lower Briggate. Back in the seventies (man) Brannigans housed the Fan Club - a true punk club. Now that the punk is dead and rotting in bastard painted black leather jackets, Brannigans is still a 'punk' club. Currently operating out of the Hell hole is Nick Toczek, a local poet type, weekly bringing us such delights as Conflict, GBH, and Bad Brains.

A night out at Brannigans is likely to constitute a rather ugly spectacle, and students are advised to dress down for the occasion. Brannigans is not likely to be the last venue in Leeds to be investigated when the new glue sniffing laws come into force.

3. **Dortmunder Dungeon** (The Bierkeller, Merriion Centre). This is a Leeds Batcave-style

venue. Thrill to the sound of Peter And The Test Tube Babies, marvel at the wit and invention of Seething Wells and gasp in amazement at the ludicrous Hofbrauhaus decor.

Really a slightly upmarket Brannigans.

4. **The Fford Grene**. Somewhere out in Roundhay, Chapletown. While city centre venues come and go, the Fford Grene goes on forever, and so do some of the bands.

One of the more traditionally rockist among us, the good old F.G. blends bare faced second division heavy metal - still the local's prime cut - with the more interesting sounds of living legends such as Bo Diddley, Wilko Johnson, Dr. Feelgood and John Otway.

Not really as far away as it looks on a map, and well worth the walk (or bus fare) for Bo Diddley.

5. **Queen's Hall**. Quite the worst venue in the western world, the Queen's Hall is a cavernous car park masquerading as a concert hall. In previous lives it has served as a tram shed, a cattle market and a flea market. You can readily believe this air-craft hangar monstrosity as each and all of these, but as a rock venue? Don't make me laugh John.

Scene of John Keenan's Futurama soirees, and host to some of the most self important and avaricious bands in the known world. The acoustics are non-existent, the views of the stage minimal, and the prices exorbitant. In the winter months, the concrete floor feels like ice, and thick woolly socks and hiking boots become essentials.

The Queen's Hall is a thoroughly bad deal for the

concert going public, but wonderful for the typically unconcerned promoter.

6. **The Polytechnic**. Has always come a poor second to the University as a student venue. And sadly will continue to do so for the foreseeable future. Simply because of the size of hall available. It is very hard to do well nowadays with a venue which is at best medium sized. However, some shrewd, or lucky, bookings occasionally pay off. For example, both Adam And The Ants and Culture Club were booked into the Poly just before their big breaks, and so, come the night of the actual concert, said bands are huge. Still you can't always book the next enormous thing just before they make it rich, and so mostly the Poly loses out.

Nonetheless, a pleasant, newly modernized, and above all fairly civilized place to spend the night.

7. **The University**. Actually the leading college venue in the country - the only one to be truly accepted into the major circuits. Unfortunately, the main hall, the Refectory leaves quite a bit to be desired. Just wait for the sold out gig with the condensation raining down from the ceiling. Still, except for the occasional spurious megastar's megabash at the Queen's Hall, Elland Road, or even Roundhay Park, the University is the place in Leeds to catch all those chart favourites.

Additionally, the University has several smaller venues on offer: The Riley Smith Hall, which is on a par with the Polytechnic, and plagued by similar problems in size; And the newly refurbished Tartan

Bar, a Brannigans sized (400/500) club atmosphere.

8. **Tiffany's**. The Merriion Centre, and

9. **Caesar's**. Both are two very similar traditional large city centre night clubs occasionally transformed into seething rock 'n' roll venues courtesy of that man Keenan, (he gets everywhere). Neither have been much in evidence recently, but the potential is there so keep your eyes peeled.

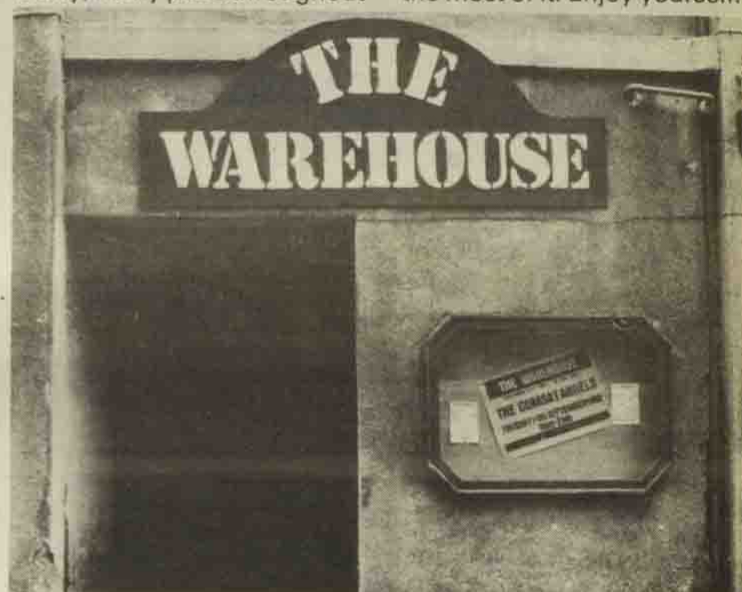
10. **Grand Theatre**. Upper Briggate. Another occasional venue. Only used when there's an easy killing to be made. Or when a band insists on an all seated venue, e.g. Judy Tzuke or Dexy's Midnight Runners. Imagine watching Kevin Rowland coming over all passionate and sincere through opera glasses from a private box and you've got the Grand sussed.

11. **The Infamous Pub Circuit**. All over Leeds. There are many, many pubs throughout

Leeds not averse to a spot of music. Some go for jazz, some for blues, a lot go for heavy metal, and there's at least one hardcore rockabilly pub (step forward The Whip).

The cream of the circuit is the Fford Grene, and the bottom is the upstairs room in The Packhorse. Check out your local press for details of where to find what. Well, there you have it. Leeds music-wise. It's not bad. It's not Liverpool, but it's not bad. Support your local music scene and it will support you.

There are, of course, some venues and some promoters who are more adventurous, more committed to music, and more worthy of your patronage. Hopefully you'll discover this yourself and do the right thing by them. But above all, whatever your taste, be it Kiss at the Queen's Hall, Wham! at the University or the Sisters Of Mercy at the Warehouse, Leeds will have something to offer you. Make the most of it. Enjoy yourself.



# SCREEN SCENE

As you might expect from a city of size, cinema in Leeds is at a premium.

Top of the heap, allegedly, are the triple-screen Odeon and ABC extravaganzas. Replete with bars and hamburger stalls, not to mention city-centre rating values, the duo offer comfort and newly released blockbusters, at a price. Find the Odeon in its prime position at the top of Briggate, immediately opposite Lewis's; and the ABC

hidden somewhat up opposite Ike's at the top of Vicar Lane.

Also to be found in downtown Leeds are the decidedly seedy, and the slightly seedy Plaza and Tower moving pictures emporiums. The latter dealing in recycled Emi material (Very Cheap Seats on Monday afternoons) and the former in m porn, porn and... porn.

Coming away from the Headrow into the outskirts of Studentland, we first find the

quite wonderful Leeds Playhouse. Featuring late night cinema of both populist and arty appeal, the Playhouse marks a must in the student's cultural calendar. Missed those Asterix films the first time round? Catch them at the Playhouse. Reasonable prices for often important Cinema. Join the intellectuals down the Playhouse, get an early morning breakfast at the Food Box (nee Inn and Out) and freeze on the way home.

Into Headingley proper

now, and the true student cinema rears its head. The Hyde Park, on the corner of Brudenell Road and Queen's Road, is the first to show. All the worthwhile retreats from downtown, at very reasonable student-sized rates. If you live locally you will come to love the Hyde Park. But beware the seats.

On North Lane, just off the main Otley Road/Headingley Lane, the adventurous student will encounter the Lounge Picture House.

Another budget priced, but more comfortable, establishment, the Lounge also gets the films a little later than the Odeon and ABC, but some would say that the saving and the convenience, make the wait worthwhile.

Out just a little further along the main road, and on the other side of the road, lies Cottage Road, where, logically enough, you will encounter the Cottage Road Cinema. The finest of the three independent Headingley cinemas, the Cottage Road retains the low prices of the others, while attaining a standard of comfort and facility which would not look amiss downtown. And for some reason, the films have been arriving Cottage Roadwards pretty much in step with the city centre cinemas.

Add to these the occasional University Film Society Show and other odd society events, not to mention the LUU Engineer's Society regular showings, and you should always be able to find some sort of film to see. Whether you choose to make a night of it in town, or to slip round the corner to your local, and end the evening with a dash to your other local, both options exist. It's your choice.

**WE'RE VERY NEAR FOR YOUR TRENDY GEAR**

fifty  
fifty

**10% DISCOUNT ON PRESENTATION OF THIS VOUCHER**

**17 HEADINGLEY LANE, LEEDS LS6 1BL** ☎ **744751**

**AFGHAN COATS, THREE QUARTERS, WAISTCOATS LEATHER TROUSERS, SKIRTS, JACKETS**

**"SUEDE" SHIRTS, BELTS,**

**MANY VARIETIES OF HIGH QUALITY FASHION WEAR IN STOCK FULL RANGE OF LEATHER AND STUDDED ACCESSORIES**

**SKIRTS £22.95 ★ TROUSERS £49.95**

**STEPHENS MUSIC SHOP**  
70 NEWBRIGGATE LEEDS  
Tel: 434710

ROLAND SYNTHS PIANO'S ETC  
Jupiter 6 £1595; MC202 £299;  
SH10/Synths £225; HP30 Piano £225;  
Drimatix & Brassline each £199

YAMAHA GUITARS, SYNTHS  
CS70M POLYSYNTH NOW £1250  
CS01 Monosynth £139; CS80 Poly £750;  
SG Electric Guitars at discount prices;  
Hand-made acoustic guitars from £79;  
Home Recording Tapes Mixers, etc.

DRUMS, CYMBALS, ETC  
Ludwig & Yamaha shop-soiled 20% off;  
Paiste, Avedis, Sabian Tosco Cymbals;  
also Gibson, Fender, Custom Sound,  
Trucker, Badger, Casio, etc.

**8-TRACK RECORDING STUDIO**  
★ NOW OPEN ★



# WHAT TO WEAR

## AND WHERE TO GET IT

An interesting characteristic of the Genus *Freshus Studentus* is its capacity for undergoing a considerable transformation in its plumage over the course of an academic year.

Shirts with hang-glider like collars are often discarded for grandad collar-less versions, flares are exchanged for drainpipes or more commonly army trousers and there is a huge run of business for shops that pierce ears. Neither is this confined to the male of the species, the female tends to discard her frilly blouses for shapeless, sack-like things and blue plastic earnings.

Whatever style of attire you choose to adopt, or even if you're not really interested in looking sharp and just want to keep warm and ward off those chilly Yorkshire winds, Leeds can supply the goods, and cheaper than in London.

### SECONDHAND

There is one word that can save you pounds and pounds and that is **SECONDHAND**. Cheapest of all for second hand clothes as well as general bric-a-brac are **JUMBLE SALES**. Arm yourself with a trusty pair of elbows, and **BE FIRST IN THE QUEUE!** Jumble Sales are very popular and can get extremely crowded. Find out where they are by looking in shop windows, the free weekly paper Leeds Weekly News or the Yorkshire Post.

### CHARITY SHOPS

Bargains can also be found at the various charity shops, including an **OXFAM** shop and a **MIND** shop in Headingley and the **SUE RYDER** shop in Hyde Park. There are also a number of charity shops along Boar Lane, near the main train station. Also on Boar Lane is a small new shop, **CHEAP THRILLS**, which has interesting selection of gear including Hawaii shirts and suede shoes.

In a similar price range (about £4-£5 for a shirt, £12 for a suit and less for a dress) are the 40's 50's 60's shop in Call Lane and **FUNNY WONDER** around the corner near Wharfe Street.

### TRENDIER

**X CLOTHES** is trendier as well as more expensive catering for the bleak and black crowd, although not exclusively. Sited in Call Lane (opposite 40's 50's 60's) it also offers sunglasses and black leather jockstraps.

Near Briggate are **OTHER CLOTHES** and **CITY LIMITS**. Other Clothes sells trendy clothes at highish prices, some of which are just within the reach of a grant cheque. City Limits is in the same arcade as Other Clothes and sells ethnic dresses and other hippyish paraphernalia including those extras that any devotee of herbal cigarettes will need. A place to get your head together at.

### CHEAPER

Opposite the University is

Pomegranate selling similar merchandise to City Limits. Fluffy jumpers can be had at **F.M.P.** Clothes in Hyde Park which also sell jeans and suchlike for a good few pounds cheaper than they cost downtown. Also worth checking out for bargains are the stalls in the market and the **Merrion Superstore**.

For the more discerning, less 'Alternative' student, Leeds has somewhat less to offer. In truth this is probably somehow related to the fact that, at the last count, Leeds was almost two years behind the civilized world. However there are some bright spots to be found among the dark days and cobbled streets of the Wool City City Centre.

Of course, all the usual high street watering holes abound. Here a **Debenhams**, there a **Lewis's**, everywhere a **Chelsea Girl!** Seek, and ye shall find.

Worthy of a special mention, for one reason or another, are the following.

1. **Schofields** - a 'major' department store in the traditional mould. Large shop, impressive stock and bloody terrifying prices. The basement menswear/sportswear could come in handy for all those little bits and pieces: Pringle jumper, ultra-stretch Farahs...

2. **HMV** - scores a mention simply because it's none too easy to find at first. The standard chainstore bit, at the back end of Marks and Sparks.

3. **Jumbo** - while we're talking records, let's talk about the best, most 'vital' shop in Leeds. Perhaps not such good value on chart albums as the **Megastore** brigade, but just **GREAT** on singles.

4. **Austin Reed** - about the same size as the London store's third floor gents, but worth a nose by Leeds standards. The sports department, in the basement boasts the most 'hip' stock in Leeds.

5. **Lillywhite's** - Yes, the 'finest sports store in the world' expands from Piccadilly Circus, bringing its ridiculous London prices north. For some things it is actually cheaper to travel to Manchester or even Liverpool. Still, almost a must for the swish young things around town. Loads of Adidas, Nike... and when I last looked, two Ellesse tennis shirts and four Tacchini track suits.

6. **The Benetton Shop** - get your blue and white rugby top here.

7. **Top Shop** - All the usual low brow, high street fashions, plus an extensive Adidas range. This shop caters for the Leeds United Service Crew (you've seen the movie, now read the cartoon). Trainers? They got 'em.

Stanley Park, Leeds Student's resident life-stylist, stresses that the truly great among you will, of course, feel the need to steal everything you can lay your hands on, and accepts that this can do no harm in moderation - but asks you to remember this one important tip. **DON'T TRY IT IN LILLYWHITES.**

# FMP CLOTHING

## HYDE PARK CORNER

### HAND KNIT MOHAIR JUMPERS

£19.99

ALSO

BAGGY, LOOSE, TIGHT, STRETCH,  
PLEATED, STRIPED REVERSIBLE

JEANS, CANVAS, CORD, JACKETS, SHIRTS

by

LEVIS, PEPE, INEGA, LOIS, WRANGLER, LEE,  
JAYTEX, EASY, WALLY'S



# LEFT, RIGHT AND CENTRE

Student life at Leeds can offer a lot more than the mere pursuit of qualifications.

Leeds' student environs can be a marvellous training ground for aspiring politicians, and getting involved in student politics rapidly teaches the techniques

of backbiting and intrigue that are the pre-requisites for a career in the public eye.

To a large extent student political groupings mirror the conflicts and conditions of their counterpart national organisations. L.U.U.'s Labour Club is a case in point.



## A Beginners Guide to Student Politics

Their meetings usually fall into a familiar pattern of the Monotonous, sorry Militant Tendency comrades telling their yawning audience of the need to nationalise the top 200 monopolies to an accompaniment of last weeks jerky hand movement.

Non militant members spend much of their time plotting to further the cause of proper democratic socialism, i.e. anything that hinders Militant. Occasionally members of other Trotskyist organisations join the Labour Club, but unarmed with Militants ruthlessly used weapon of boring speeches they generally have little impact.

What of the Tories? L.U.U. President Sally Ryder once held office in the Federation of Conservative Students so presumably she qualifies for the label. Strangely enough though, she swept to power running on an 'apolitical' ticket.

However generally, Tories don't come out and say that they are right wing and instead they refer to their policies as 'sensible' or 'moderate'. Sorry Sally, but being terribly polite to Mrs. Thatcher won't bring back the Hebrew or Archaeology departments or the other £25 million pounds in education funding that the Leeds area is

to lose over the next three years. All part of that dirty 'Politics' business.

To some extent the rise of the Tebbittite thug right has been mirrored in F.C.S. nationally. Searchlight magazine has exposed a number of links between sections of F.C.S. and the National Front. Generally, though Leeds Tories are just middle-class types who intend to stay that way.

The Alliance in the University are fairly small at least in terms of influence wielded. This is probably due in part to their lack of a really strong personality to turn them into a real force. For now in L.U.U. at least, they seem to be missing out on the band-wagon that their national organisations are rolling along aboard.

Student politics however are by no means monopolised by the big three, especially on the left. The far right are present if toilet graffiti is anything to judge by, but they seem to have the sense to keep their politics exactly where they belong.

There is virtually no (orthodox) Communist Party activity within the student milieu, which is surprising as the party has over 300 members in the city. What we have instead is the Revolutionary Communist Party whose members are extremely active, as are their front organisations 'Workers against Racism' and the Irish Freedom Movement. Members of the R.C.P. can be seen all over town selling their paper 'The Next Step', full of barely comprehensible articles about the menace of Imperialism.

In true 'Life of Brian Style' the Revolutionary Communist Party split off from the Revolutionary Communist Group who had split off from the Socialist Workers Party (S.W.P.). The student section of the S.W.P. known as S.W.S.O., were once a real force in student politics in Leeds but following splits and expulsions they now exert little or no influence. Needless to say the R.C.P. and the S.W.P. hate each other, a result of fairly complex

ideological disputes. The S.W.P. thinks that the Soviet Union is 'State Capitalist' the R.C.P. doesn't. It's nearly as trendy and much less hassle to join the Labour Party, and you don't have to stand around in all weathers selling a newspaper that nobody buys, while getting abuse for being a trot.

Last and least there is the Young Socialist Students Society, student branch of the Workers Revolutionary Party. Their miniscule presence at both University and the Polytechnic is probably a result of their perverse politics which includes support for Colonel Gaddafi and Ayatollah Khomeini. The W.F.P. newspaper Newsline is the only daily national paper to be able to afford colour photos and feature extensive Libyan News. Any suggestion that the one is paid for by the other is vigorously denied.

If none of the above appeal you could join the Anarchist Society, some of whose members are into herbalism and they usually manage to organise a weekly bookstall in the Union. Of course there is also much scope for hackery in 'issue' societies and groups such as C.N.D., Women's Action Group, the Green Society and the various solidarity Campaigns. In fact as you will rapidly realise the opportunities for student politicos are virtually boundless as Jack Straw, once L.U.U. president and now an M.P. found out.

Are you Barclaying up the wrong tree?  
Are you fed up with Midland of the road service?

Then read on . . .

Ikes don't offer free banking for students

Ikes don't offer a cheque book and card for students

Ikes don't offer personal loans or free advice for students

. . . But Ikes do offer discount on the best food in Leeds!

Produce your union card and we will give you 10% discount, bring a party of 7 or more between Sunday and Wednesday and will also waive the 10% service charge (all cards must be produced).

We welcome all new 1st year students, along with our other regulars to Ikes for the best food in Leeds including beautiful burgers, stupendous steaks and

and impeccable pizzas and pastas.

LIVE MUSIC  
WITH SIMON  
FOLEY EVERY  
MONDAY EVE

CROSS BELGRAVE STREET,  
LEEDS 1.  
TELEPHONE 433391

**WAT**  
Winnies

6.30 -  
7.30 p.m.  
SELECTED  
COCKTAILS FOR  
ONLY £1.00  
(Diners only)

### CITY LIMITS

EMPIRE  
ARCADE,  
LEEDS 1  
Tel: 438815

clothes  
jewellery  
incense  
leather



## Cooke's Corner

Even as I write thousands of bright-eyed innocents are filing into cell block refectories. Flee, dear friends, and use the that grant cheque that's burning a hole in your pocket to finance some wise capital expenditure. Follow the seven commandments of grub.

1. Buy a large, sharp, non serrated knife and a large cutting board. Sabatier make the best knives, but they're priced accordingly.
2. Buy a pressure cooker, a must for quick economical and nourishing soups and stews. Don't get a second-hand one.
3. Take up home-brewing.

Shrewd investment here will save a small fortune in months to come. The initial equipment will cost about £7, subsequent brews will produce beer for as little as 6p a pint. Make lager and drink it so cold you can't taste it.

4. Buy in bulk - lentils, rice, beans etc. In shared houses get a 56 lb bag of potatoes.
  5. Buy some recipe books and follow them as closely as possible.
  6. Don't forget the odd items that make life that much easier; a tray, and mixing bowl.
  7. Eat drink, be merry and try the recipes in next week's column.
- How happy you will be if you keep the Seven Commandments of Grub!  
Keep stirring!  
BILLY THE CHEF.



# 'S ON...

Hotel. Starts 8.00 p.m.

## TEMPEST

By Shakespeare. Civic Theatre, 7th and 8th October at 7.00 p.m.

## UNDER MILK WOOD

By Dylan Thomas. Civic Theatre, 11th to 15th October

at 7.30 p.m.

## BYE BYE LOVE

Leeds Poly Creative Arts Theatre, 13th and 14th October at 7.30 p.m.

## FITTING THE CRIME

L.U.U. University Road, 6th October at 7.00 p.m.

## Classical

### ENGLISH GAMELAN ORCHESTRA

October 7th. Grammar School, Moorland Road. English Gamelan Orchestra play a selection of traditional Javanese and New Western music. 7.30 p.m.

### MUSIC ENSEMBLE

October 7th. Clothworkers' Centenary Hall, University Campus. Dept. of Music Ensemble. 1.10 p.m.

### YOUNG MUSICIANS

October 8th. Leeds City Art Gallery. Young Musicians. 11.00 a.m.

### BACH

October 8th. Leeds Town Hall. English Chamber Orchestra and the Leeds Festival Chorus. A programme of Bach. 7.30 p.m.

### JOHN WEDELL HORSNER

October 11th. Leeds Town Hall. John Wedell Horsner from Denmark on the organ. 1.05 p.m.

### MEET THE PERFORMER

October 12th. Leeds City Art Gallery. 'Meet the Performer'. Oscar Shumsky (violin). 7.30 p.m. Students, £2.00. Music Serenade (wind octet) 1.05 p.m.

## Gigs

### UNDER TWO FLAGS

Tuesday, October 11th. £1.50. L.U.U. Tartan Bar. Bar Extension. **CANCELLED**

### U.K. SUBS

U.K. Subs plus Actifed. Thursday, October 13th. Poly City Site. £2.50.

### PLAY DEAD

Play Dead plus Lavoltalakota. Tuesday, October 11th. The Dungeon Club at Tiffany's, Merriem Centre. Members £2.00. Door £2.50.

### HAZE

Sunday, October 8th, 7.30 p.m. Fford Green (Harehills). Tickets £1.00 from Cheap

Thrills, Boar Lane and The Badge Shop in Merriem Centre Market.

### JOBOXERS

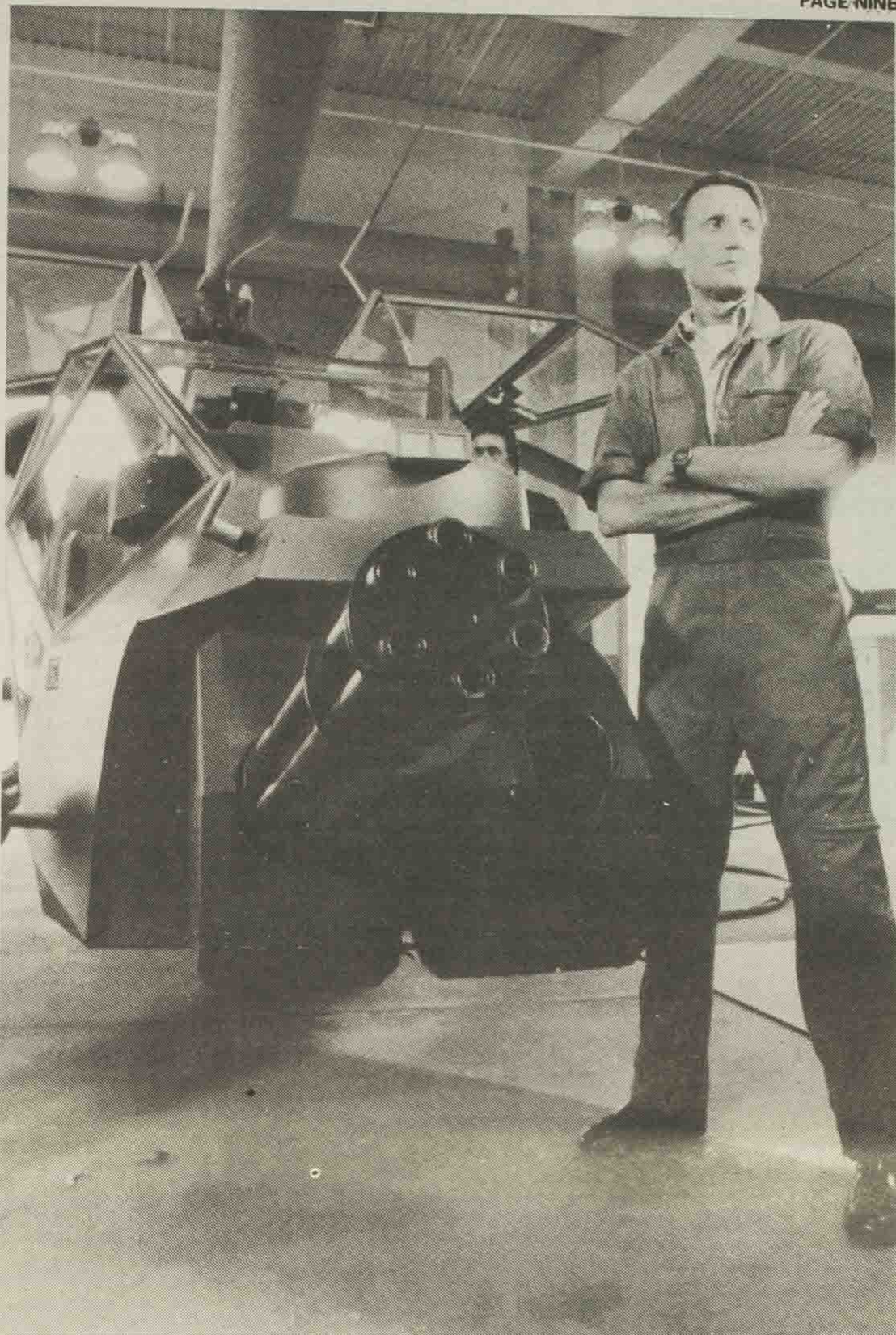
Sunday, October 8th at The Warehouse.

### BRANNIGANS

Conflict, Hagar the Womb, and Lost Cherries. Wednesday, October 12th. Brannigan's.

### THE THREE JOHNS

To Be Continued, Nick Toczek plus disco, Monday, October 10th. Leeds Venue Group, L.U.U. Tartan Bar. 8.00 p.m. to 12.00 midnight. Late Bar. 70p.



● Roy Scheider on guard with his chopper Blue Thunder.

## Film Index

### BLUE THUNDER

Roy Scheider as a helicopter pilot flying night-time patrol in Los Angeles - See page 7 for a detailed review.

### BREATHLESS

Smoothie Richard Gere takes the lead in this stunning film.

### FRIDAY 13th PART III

More horrifying stuff to send shivers up your spine and make your flesh creep in 3D IF

A fantasy film set in a public school. A classic piece of 60s cinema.

### NATIONAL LAMPOON'S ANIMAL HOUSE

Fun and frolics at an American college. The film that started a spate of college capers.

### OCTOPUSSY

Roger Moore up to his usual tricks in the latest death-defying Bond bonanza.

### PSYCHO II

Norman Bates is back. A generous showering of murder and intrigue.

### SCREW BALLS

See under National Lampoon's Animal House. Also Porky's and Porky's 2. Don't American college pupils do any work? - see page 7 for detailed review.

### STAYIN' ALIVE

John Travolta is Tony Manero, the dancing, twirling,

swirling, girating, dazzling disco dancer.

### THE BLUES BROTHERS

American cops driving around in high speed car chases. Smashing.

### THE CHOIRBOYS

An everyday story of American police folk.

### VERONIKA VOSS

A Fassbinder film set in the 50s about a washed-up film star.

### WARGAMES

A computer whizz-kid gains access to top secret information with near disastrous results.

## Exhibitions

### SCULPTURE

Shirazeh Houshiary and Edward Allington Sculpture. Until 28th October. St. Paul's Gallery, 57 St. Paul's Street, Leeds 1. Monday to Friday, 10.00-5.00 p.m.

### TAPESTRIES

Sue Lawtrey Tapestries. Until 29th October. City Art Gallery, The Headrow, Leeds 1.

### PAINTINGS BY G. BLAND

The Gallery, Almar Books, 10 Commercial Road, Kirkstall. Until 29th October. Paintings by Judy Barham,

31st October to 26th November.

### UNIVERSITY GALLERY

University Gallery, Parkinson Building, 11th October to 11th November. The Enhanced Value. The photographs of Horace Nichols, 1899-1920.

From Shore to Shing Shore. The work of USA Govt. photographers.

11th October to 1st November. Reginald Shepherd - silkscreen prints and watercolours.

## Politics

### ANARCHIST GROUP

Leeds University Anarchist Group. First meeting Tuesday, 11th October, 1.00 p.m. in R.H. Evans Lounge (All Welcome).

### SOCIALIST WORKER STUDENTS SOC

Friday, 7th October, 1.00 p.m. Committee Room C. 'The Revolutionary Road to Journalism' - speaker Jon Olley.



## Pomegranate Women's Co-op

**Cloths & knitwear**  
including original designs  
by Ariadne & Feel Sheepish



Hand-made  
Leather goods,  
Earrings,  
Scarves,  
Cards,  
etc.

Mon - Sat  
10a.m. - 5.00p.m.

**77 Raglan Road,**  
(near the University next to the Ale House)



## POST-PUNK NEUROSIS

**NEW TOWN NEUROTICS/  
ROUGH JUSTICE**  
Brannigans

With the punk clubs emptying last as the Elland Road terraces, the young punks 'stroll' Doctor Marten style; you can't pogo on a deserted dance floor.

Marooned amidst the worst haircuts since Mad Max 2, I shed a tear for days gone by. To think that a dream has come to this: a gaggle of drunkards making dicks of themselves in a uniform that never even existed way back when. Today's solvent abusers are depression hippies, equating, not to the Punk Ethic, but to the worst type of pissed-up biker. Ugly, but then we all knew that before we came, so on with the show.

Rough Justice tout an amiably unpretentious brand of crisp metallic bash. Spiritual Sons Of The Upstarts, incisive at times, fuzzily melodic at others, they show promise. As much as anyone can within these confines. With more songs like 'Jesus Christ, They've Got Guns!', and less like 'Victory To The

Rebels' they could have something.

Just like the Newton Neurotics could have done. Their 1980 single 'Hypocrite', still available on a Cherry Red compilation, was nothing to write home about, but it did show a good deal of promise. Three years, two singles and one album later, the Neurotics have got no further. In fact, after regressing into torpid one dimensional sloganeering, they have probably had to struggle to regain the relatively sophisticated and promising sound of 1980.

Still stuck in the 'jagged post-punk rock' of a limited Stiff Little Fingers, it is hard to believe that the Neurotics are so severely restricted. Their very name betrays their small town preoccupations. Their world revolves around hanging about on street corners moaning about living in a small town, sitting in seedy snack bars and pubs moaning about living in a small town, and singing small town songs moaning about living in a small town. Tunnel vision? They got it. Whingeing bastards.



Newtown Neurotics

Musically and lyrically, the Newtown Neurotics are obsessed with a particular shade of grey. Ignoring the rest of the spectrum, and what their apparent ability and intelligence might be able to achieve in colour, they

grind on, regardless of a surprisingly discerning audience, which voted, early and often, with its feet. Less whining and more guts please.

ROGER HOLLAND

## ALBUM

**KISS: Lick It Up.**  
(Casablanca)

KISS - a celebration/indictment of 20th Century American consumerism. Real-Life Super-heroes - Rock 'n' Roll Spidermen. Hear the records, read the comics, watch the movie, play the pinball machine - the spinoffs are endless and increasingly ridiculous (would you, believe lawnmowers and toilet paper?). Neither did I.)

The whole KISS concept stinks of the idea "If it's worth doing, it's worth doing for the money," and so, faced with ever declining U.S. sales, The Fantastic Four (only two of whom remain from the original line-up) peel off the

make-up. KISS with confidence, or an act of desperation? Well, they've had numerous albums' worth of practice and maybe they're now confident that the music no longer needs the camouflage of the Rock 'n' Roll Circus.

Stripped of the Liberace-like theatrical overkill, the grand illusion which was the foundation of KISS's phenomenal U.S. success, Lick It Up turns out to be a competent rock album, never stunning (and sometimes never rock) but infinitely more palatable than their thankfully discarded image suggested. And with a singer who could use his tongue as a belt and a guitarist who looks like a frog,

**Leningrad: Leningrad -**

This new outfit are a two-

it's probably just as well.

KISS have never emulated their U.S. success on this side of the Atlantic. Whether the image change will alter all that or merely alienate those who loved them for their American Excess, only sales will tell, but surely an album with a song called 'Dancing All Over Your Face' deserve more than a cursory glance?

Simmons and Co camp it up at the Queen's Hall on October 21st, so pack the baseball jersey and the Jack Daniels and experience some anthemic US rock, y' all!

CHUCK WILSON

piece comprising Lucy Mallows; voice & acoustic guitar and Paul Cooper; guitar, bass and drum machine.

The overall feeling is one of exquisite melody patterns laid down by criss-cross guitar rhythms, all held together by capable bass lines. Miss Mallows' voice tops off everything ornately. She has a very smooth, settling delivery (verging on a tenor at times) always perfectly accurate notewise, and sometimes reminiscent of a younger Chrissie Hynde. The lyrics, always clearly distinguishable, tell sad tales of solitude, low life, and even despair, without the usual awful slide into self-pity,

slush, and bottom-less pits which currently seem to be in vogue. The lyrics to "Move Along Woman" and "Touch" are particularly moving and all songs are originals.

Well, that just about wraps things up, kiddies, so considering the fact that these two musicians are also fairly pretty, and on the evidence of this first excursion into the wierd and wonderful world of rock and roll, this lot should do very well indeed, provided that they can keep up this sort of standard.

The band can be contacted at Leeds 744806, for copies of the tape or otherwise.

MARK WALLBANK

## UP...AND...COMING



**ON THE RAZZLE**  
Playhouse

Very rarely does Tom Stoppard produce revolutionary, controversial, innovative plays - they are more often the epitome of predictability. On the Razzle is no exception.

The publicity for the play promises 'a dazzling comedy', but the only thing I found even slightly dazzling was the number of sexual innuendoes which Mr. Stoppard managed to pack into two hours.

Not that the audience was unappreciative - the vast majority seemed greatly tickled by such show-stopping lines as "Are you a goer?", and "I've got the best pair of chestnuts in town" from an ancient and over-sexed coachman.

Adapted from an original by Nestroy, the nineteenth century playwright, the play recounts the adventures of two provincial shop assistants who decide to shut up shop and go to Vienna in search of fun and japes.

By pure coincidence (all in the best tradition), their own employer is also in Vienna on business. You've guessed it - chaos ensues with the inevit-

## THEATRE

able disguises, mistaken identities, chance meetings...

Unfortunately, On the Razzle manages to retain all the worst elements of what must have been, in its day, a satirical attack on the Viennese bourgeoisie. In 1983, we are confronted with little more than farce.

The badinage between the chief sales assistant, Wein-

berl, and Christopher, his apprentice, (whose Liverpool accent rendered it occasionally incomprehensible), was often extremely witty. However, for the most part, the play relies largely on the very silly and the very predictable for its entertainment value.

If you like farce, you'll love it. If, like me, you don't, give it a miss.

SUE McQUEEN

**LEEDS  
PLAYHOUSE**  
Calverley Street 442111

Until 29 October

**TOP GIRLS**

by Caryl Churchill

**SPECIAL STUDENT**

**OFFER!**

Two tickets for the price of one (full price) for 7,8,10 October only.

Seats bookable in advance - tel: 442111. Please bring your Union Card when you collect your tickets.

**JAZZ - Sun 9 Oct 2.30pm**

**STAN TRACEY  
OCTET**

'breathless, energetic, massively assured ... one of the great

medium sized jazz bands in the world' - Guardian.  
Students only £1.80!

**FILM**

Tonight at 11.15pm

**IF... (15)**

A marvellous fantasy set in a public school with the establishment trying to subdue the rebels.

Sat. 11.15pm & Sun. 7.30pm

**VERONIKA VOSS**

(15)

Fassbinder's version of 'Sunset Boulevard'  
Admission still only £1.50



# THE PACKAGE TOUR

## RESPOND TOUR Leeds Polytechnic

The first gig of a new year, and the first appearance of Paul Weller's second Respond package tour. In the absence of Paul Weller himself, the main attraction of the evening was Tracie and her Soul Squad. Their brand of 80s soul appealed to the mixed multitude that filled the Ents Hall, from Jam fans to bikers! Early offerings included **Boy Hairdresser** and seemed insubstantial when juxtaposed with the hit singles **Give It Some Emotion** and **The House That Jack Built**, that got everyone, including the bikers, grooving! Their brief set drew a zealous response securing an encore of an enjoyable, though an soporific, shoo-be-do-wop song.

The Questions had chosen to headline tonight. Though less revered than Tracie, they followed a more original method of dance. The catchy soul opener **Barking Up The Wrong Tree** was followed by the excellent **Everything I See**, an enticing soul/funk swirl. Sadly, disappointment followed these promising beginnings, and the bikers were forced to retreat to the bar to importune Tracie to sign their cut-offs. Much of the remainder of the Questions set was played against the now familiar background of a chant for Paul Weller from the Jam fans.

**Someone's Got To Lose Their Heart** was their last and most outstanding song - rolling rhythms, turbulent tunes, vivace vocals - producing a propitious climax.

All in all, not an unwelcome package of competent young bands, but lacking the innovation which made the Stiff Tours of the late 70s such an innovation.

CHRISTOPHER PEARSON



● Tracie - Pic: Richard Pollard

## SINGLE COLUMN

### THE FALL Container Drivers (Rough Trade)

Compelling ramshackle rockability bash surmounted by yet more of Mark E Smith's inimitable Mancunian drawl. A paean to the internationally adored large load lorry drivers, 'in Co-op jeans', which is almost entirely related to the under lying tune. Add a truly wonderful broken glass guitar solo, and you have a perfect Fall single. Single of the week, if you like The Fall.

### THE THE This Is The Day (Epic)

As with The Fall, an unlimited edition double single. Matt Johnson goes laconically continental. Peter Perrett comes off the drugs and meets Charles Aznavour in an attempt to shift some units. Deserves to succeed, but probably won't, because the radio stations won't trust a name like The The. Single of the week if you're a Some Bizarre new pop groupie.

### PLAY DEAD Shine (Situation 2)

A guitar sound hard and cold as an Arctic glacier completely wasted on a mid-seventies Genesis fixation. The record buying public needs to be very careful nowadays. Single of the week if you thought that the 'Lamb Lies Down' was the greatest thing since 'Hi Ho Silver Lining'.

### PHILIP CHEVRON The Captains And The Kings (Imp)

From Brendan Behan's 'The Hostage', produced by Costello and sung by a former Radiator (From Space). Tongue in cheek Irish political comment set to orchestrated folk. Could so easily have been a Noel Coward number. Single of the week if you're me.

### MODERN ENGLISH Someone's Calling (4AD)

Wonderful drum sound, precise guitar, lovely synth and nice voice. Great production, lousy song. A pile of sweet 'mysterious' electropop shit.

### MAJOR ACCIDENT Leaders Of Tomorrow (Flicknife)

Another for those who haven't yet sussed that the Upstarts were the last punk band. As a lesser journalist pointed out last week, so many of these singles open with one meaty guitar line, pause for breath and then start again with a quite inferior riff. The fact that this record is yet another example of this syndrome is the only remarkable thing about Major Accident. The fact that they're on Flicknife - a hippy indie in a desperate disguise - only goes to show that all these supposed new punks are just hippies with short hair and bad complexions. Single of the week if you're thick, spotty and easily ripped off.

### UNDER TWO FLAGS Lest We Forget (Situation 2)

Another case of the Emperor's New Clothes. Easily recognisable Joy Division bass line replete with all the usual progressive rock trappings. Single of the week if you like your heavy metal with a Bono haircut. ROGER HOLLAND

## ALTERNATIVE CABARET

### City Varieties

When I arrived at the City Varieties, half a dozen people were gazing towards a stage occupied only by an amp.

"Now this is what I call alternative," I thought. "Just like a Lennon film."

After a lengthy audience participation soundcheck, things got underway with Billy Bragg.

He's a 'punk Jake Thackeray,' fresh from Futarama, whose pronunciation of 'Wilderbeast' was a joy.

The first of the trio of Alternative Cabaret was the highly original and energetic Roy Hutchins, rubber lips and elastic larynx accompanying his frantic exploration of familiar paranoias and hangups.

Discos, meeting people, parties, sex. All these and more featured in a totally compelling performance during which was raised a question fundamental to the continuation of any relationship: 'Do you love anyone enough to rub shit in their face?'

Next, the far more sedate and stationary Sharon Landau, the evenings minority act.

Accompanying herself on the piano, she was at times reminiscent of Victoria Wood.

Tony Allen ended the night, clad in bizarre purple tights. In fact, he looked unfortunately like Russ Abbott, but who am I to argue? A self-confessed

militant agnostic ('One thing I'm sure of is that I don't know'), Allens idea of Breakfast TV is Pebble Mill at One.

His aim tonight, he said, was to look at 'British imperialism, the mass media's effect on collective unconsciousness and to have a good giggle.' In addition to all that, we got a graphic illustration of the wasp's courtship ritual and found out how the Pope managed five gigs a day on his trip to Britain.

It's a shame if people are put off by the words 'Alternative Cabaret' because they'd be missing some of the country's most creative, original and perceptive comic talent.

MARTIN WILSON

## BRADFORD WRITERS

### BRADFORD WRITERS WORKSHOP & BOB PEG AND JULIE FULLERTON SEETHING WELLS AT THE ADELPHI ON FRIDAY 30TH.

Founded with the efforts of Nick Toczek just one year ago, the Bradford Writers Workshop gave what was for many of them, a debut performance at the Adelphi on Friday night. Their poems, sketches, and songs, suffered from some stage nerves but they clearly vindicated the need for a fringe providing opportunities to such budding writers to show their worth.

In contrast Bob Pegg and Julie Fullerton brought years of experience to their highly professional folk act. Peggs wide knowledge of folk-lore,

his rich Derbyshire voice, and lively guitar work blended with Julie's dramatic and musical talents to create powerful entertainment.

Seething Wells seemed to enjoy the Folk songs which is surprising, because as all Fav drinkers must know, he specialises in savaging the audiences sensibilities with rhyming obscenities and tirades against all sections of society from students in red kickers to the wife-beating, hard-drinking, 'Tetley-Bitterman' he stereo-types so well. He is beyond any literary criticism because he defies it so well when he shouts that poetry is dead and proceeds to offer an alternative; posing as the nihilists guru doling out abuse and politics in equal proportions. For those brave enough to watch he is unbeatable entertainment. Lines such as seeing the Falklands as a 'penis warship' heading for a 'wargasin' and calling the freedom of press, the freedom to choose the sexual disease of your choice underline his humour and unique perspective, on the world. He is outrageous, and implacably negative, but anyone sharing my dislike of Mrs. Thatcher and Steve Wright in the afternoon will find him a breath of fresh air, which is after all, what the fringe is all about.

ing and yet passionate. Billy Bragg recalls nothing so much as the electrified, truly masculine equivalent of Tracy Thorn. Not a single song about seashells, but the feeling is the same.

A voice and a busy guitar which blew away the massed ranks of drum machines at the Queen's Hall and enchanted the Fringe. Billy Bragg cuts away the surplus flesh and goes straight for the vein.

ROGER HOLLAND

ANDY HOWARD

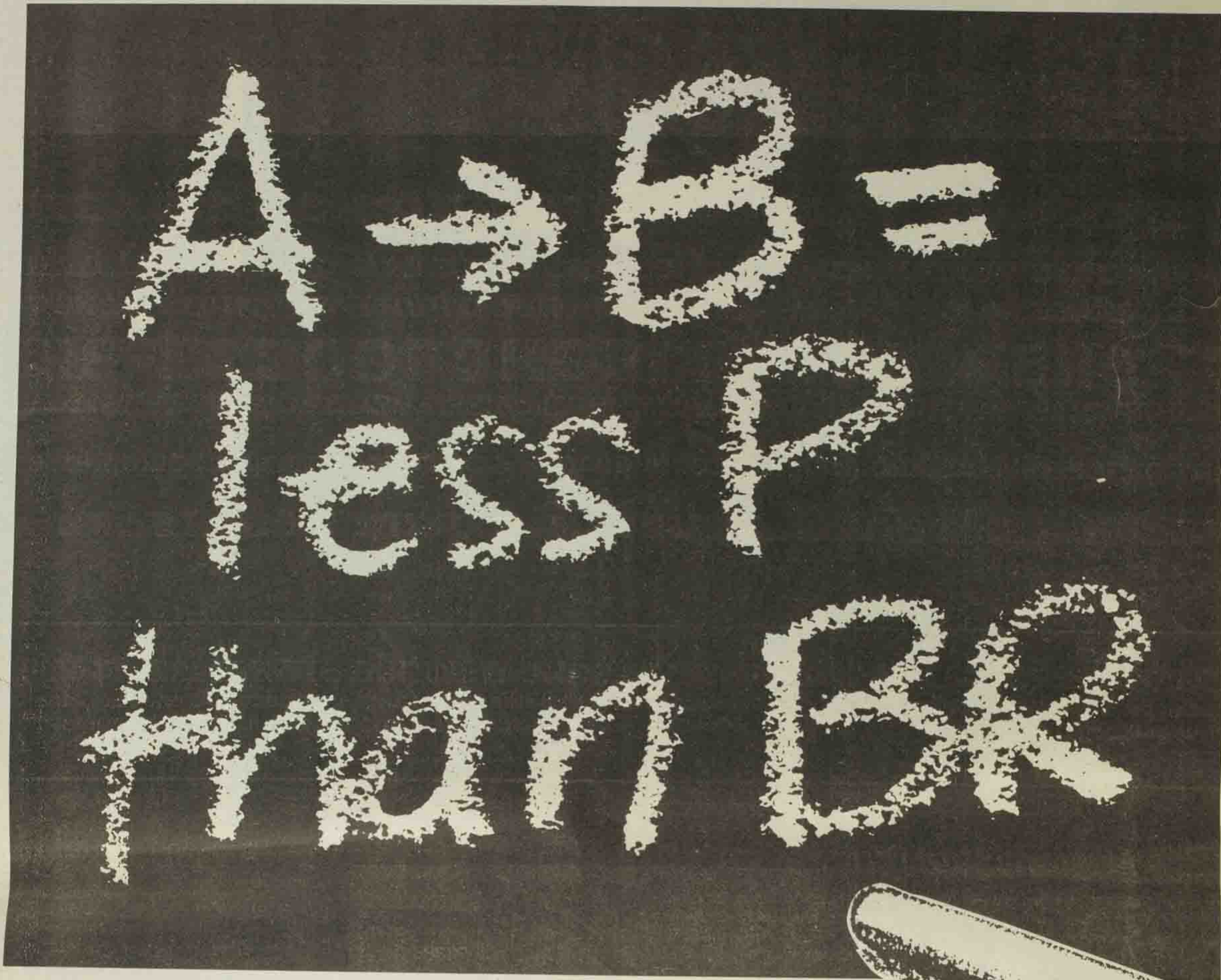
## FRINGE

### BILLY BRAGG City Varieties The Grove Hotel

Billy, one man and his guitar, goes down a storm wherever he plays nowadays. An engaging cocky cockney with a nice line in vigorous six string exertion, cursed/blessed with Paul Weller's voice, he was the undoubted star of this year's Futarama but sadly will never sell as many records as the Bay City Rollers. Or even Killing Joke.

Witty and stylish, whinge-





At National Express, we've been checking our sums.

And we've found that students can travel far more cheaply on our coaches than on British Rail.

In a random sample of over 300 main routes, more than 90% of our fares turned out to be cheaper. And the British Rail fares were an average of 70% higher.

This applies if you hold a validated International Student Identity Card (ISIC).

You're then able to travel by National Express coach to over 1,500 destinations in England and Wales for two-thirds of the full fare—or less.

Booking is easy.

Just contact your student travel office or any National Express ticket agent. There's no fiddling around with special travel cards—just show your ISIC.

You can go any time of the week, all year—there are no irritating restrictions. And as we're the simplest and cheapest way for students to get from A to B, we won't be a strain on your resources.

SAMPLE RETURN STUDENT FARES			
FROM	TO	BRITISH RAIL*	NATIONAL EXPRESS†
BIRMINGHAM	BOURNEMOUTH	£14.50	£9.25
LONDON	BRISTOL	£14.00†	£5.50
CAMBRIDGE	BIRMINGHAM	£12.00	£5.20
DERBY	LONDON	£9.00†	£5.00
EXETER	LONDON	£14.00†	£7.25
LEEDS	BATH	£20.00	£8.25
LONDON	LIVERPOOL	£14.00†	£6.50
LONDON	HULL	£13.00†	£8.25
MANCHESTER	LONDON	£14.50†	£7.25
NEWCASTLE	LONDON	£22.00†	£10.00
NOTTINGHAM	MIDDLESBROUGH	£13.00	£7.00
YORK	EDINBURGH	£19.00	£9.50

\*Fares from published leaflet 1.783. Student Railcard required—cost £12.00.  
†With ISIC—cost £3.00 (fares subject to change without notice).  
‡Saver fares with some restrictions.

**NATIONAL EXPRESS**   
**A to B, trouble-free.**







All tickets available from

**THE C.T.S. SHOP  
& JUMBO RECORDS**

**PAUL YOUNG** TUES. OCT. 25 tickets on sale oct 10

**Steve Hackett** FRI. OCT. 28

R.S.H tickets on sale now



FRI. NOV. 4 tickets on sale oct 17



SAT. NOV. 12 tickets on sale oct 17

public image ltd" FRI. NOV. 8

**2.2.TOP** SAT. NOV. 19

robert plant SAT. NOV. 26 **SOLD OUT**

IMAGINATION! WED. DEC. 7  
» TICKET RELEASE DATES TO BE ANNOUNCED



**Leeds  
University  
Union**

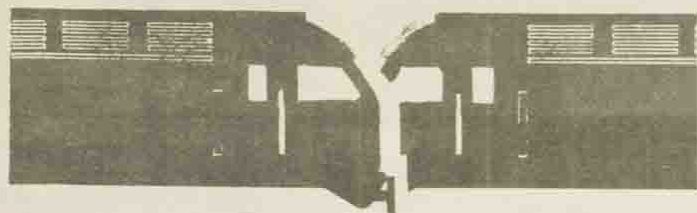
## Women's Self Defence Classes

**Every Monday  
from 1-2 pm  
in the Riley  
Smith Hall**

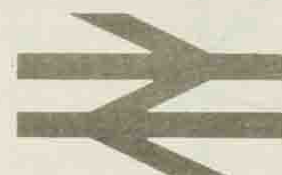
**Starting  
Monday  
10th October**

DO YOURSELF A FAVOUR  
USE YOUR

## STUDENT TRAVEL BUREAU



BUY YOUR RAILWAY TICKETS  
IN ADVANCE AT  
STATION PRICES



WE ARE AGENTS FOR -

- \* British Railways
- \* National Express
- \* Sealink
- \* Townsend Car Ferries
- \* P. & O. Ferries
- \* Transalpino
- \* Eurotrain
- \* Hertz

**DON'T MISS THE BUS  
BUY NATIONAL EXPRESS  
TICKETS IN ADVANCE**



THE TRAVEL BUREAU  
IS AVAILABLE  
TO ALL LOCAL STUDENTS



**GROUND FLOOR UNION BUILDING  
LEEDS UNIVERSITY Tel: 448877**

**MON - FRI  
9.00am - 4.30pm**



# UNDERGROUND DELIGHTS

...or the joys of caving. Nigel Clarke of LUU Speleological Society on the pitfalls of life underground.



The idea of going caving produces, in most people, a reaction similar to that produced by a decaying corpse; namely a shudder of revulsion and a desire to get away from the place as quickly as possible.

The impression most people hold of any cave is that it consists of a

tight muddy tube not unlike your average sewer, which at frequent intervals floods to the roof and kills all stupid enough to venture therein.

## COWARDLY

There are, of course, bits of caves like this, but cavers, being cowardly sorts, do all in their power to avoid these places, for example by not going caving at all. The cavers, such as the fine upstanding members of the University of Leeds Speleological Association will prefer to visit those caves where it is possible to walk accompanied by clean rock and glorious displays of stalagmites.

It would seem that the ultimate accolade paid to an underground trip is that it is 'sporting'. The word covers a multitude of sins, it frequently means that large numbers of echoing empty voids must be descended on wire ladders, or that waterfalls must be climbed or bits of passage must be negotiated with ones body and most of one's head under water. There are even those

masochists to whom the word means that the cave contains the muddy tubes described above. All these aqueous delights are made bearable, or even enjoyable if a wetsuit is worn, and usually there is something to urge you on into the cave, the lure of a superb grotto full of delicate formations, a superb section river passage, the desire to 'bottom' a famous hard cave, or perhaps a famous hard caver snarling angrily behind you. There is always of course the pub afterwards where the horrors of the day fade and it all seems fun.

## ADDICTION

This year, as every year dozens of first years will be escorted, urged and forced down some of Yorkshire's many fine caves; inevitably many will drop out and take up other pursuits such as course work, some however will keep going and join that group of students and ex-students who are addicted to the underworld, and are rarely seen in Leeds at weekends.

NIGEL CLARKE

## LE PHONOGRAPHIQUE THE MERRION CENTRE

MONDAY NIGHTS

### STUDENT DISCO

FREE ON DOOR WITH CARD - ALL SPIRITS 40p A SHOT

ALL BEER PUB PRICES

OPEN 9.30pm till 2.00am

WEDNESDAY NIGHTS

All the Best Sounds with JYM your D.J.

OPEN 9.30pm till 2.00am - 50p ON THE DOOR

THURSDAY NIGHTS

### LIVE BANDS OR PRIVATE PARTIES

STUDENTS WHO BOOK THE PHONO FOR THEIR PARTY -

★ NO CHARGE FOR OVER 100 PEOPLE ★

FRIDAY NIGHTS

OPEN 9.00pm till 2.00am

FREE ON DOOR WITH CARDS UP TO 11.00pm ONLY

ALL SPIRITS 40p PER SHOT UP TO 11.00pm

SATURDAY LUNCH

### DISCO

OPEN 12.30 till 3.00pm - NO CHARGE

SATURDAY NIGHTS

### ANN IS YOUR D.J.

"CRAMPS", "SOFT CELL", ETC.

OPEN 9.00pm till 2.00am

LIVE BANDS

THURSDAY 13th OCTOBER

★ IF, BUT & WHY ★

Tel: Leeds 446507 or 433688  
for dates for your party



# GETTING FIT

## (...and having fun)

Whether you're fighting the flab or giving an unconditional surrender, DAVID KEEPE looks at how to get the most from Sport in Leeds...

### STUDENT SPORTS CLUBS

For the student whose physical aspirations extend beyond beer races in the Tetley Bar the sporting options available to students in Leeds are extensive and well organised.

Both the poly and university give hefty subsidies to their sports clubs with the university having just spent numerous thousands on a new sports hall. Between them the Poly and University run over 70 sports clubs, with the University in particular running several societies with a sporting flavour.

It may cost you up to a pound or more to join the clubs and any extra expense depends on which club you join.

### POLY SPORT

The Polytechnic has an extremely fine record of sporting success, winning various national and regional prizes.

The sports clubs at the Poly are organised so that all levels, from beginner to professional, are catered for. Competition is organised at a local, regional and national level with prizes normally gathered in abundance. All major sports are catered for as well as some non competitive sports such as mountaineering.

### LOCATION

The Poly has the majority of its facilities at the Beckett Park site, which has an excellent all weather track plus an indoor training area for athletes.

On the central site facilities are limited, mainly due to lack of space, and as the Poly doesn't have adequate squash facilities outside venues are used.

For further details of where and when the sports clubs operate see poly sports or recreation leaflets.

### UNIVERSITY SPORT

With the addition of a new hall the new sports hall now offers its students exceptional facilities which easily match the standard of other universities.

As with the Poly, the University caters for students of all standards and also maintains a high standard of success.

The high cost of building the new sports centre means that the University now operates a payment system for the use of facilities.

Those students holding a



registered-users card can gain free admission and free use of facilities (except squash). Any University student can become a registered card holder and the cost is £3.50 a year.

If you do not hold a card, even if you are a member of a sports club, you will pay the full charge for use of facilities.

The locations for all outdoor sports are off campus,

mainly at Weetwood Athletic ground, where there are 12 soccer pitches and 7 rugby pitches. Facilities are also available for Hockey.

Both the Poly and University have spent a great deal on sport so it's now up to the students to show they were right.

Don't become a beer-bellied slob - get out and get fit!

## The sound of the crowd

### SPECTATOR SPORT

Students in Leeds are fortunate enough to be blessed with a wide range of spectator sports, so if you're sick of the frenzied union highlife why not venture into the great beyond and go and view some live sport?

### SOCCER

With the fortunes of Leeds United definitely on the wane the city can only offer the spectacle(?) of second division football but, with so many big name clubs having fallen on hard times, you can still view some of the country's better sides.

One word of warning. Leeds fans are not renowned for their hospitality so don't air your views too loudly - scouse and cockney accents definitely not recommended. If Elland Road is your destination you can catch the bus (A1 or A4) down to Meadow Lane and walk the remaining mile, or you can catch one of the metro special buses which run from the Swinegate bus depot. If you're driving on to the ground then leave early as parking spaces are few and far between.

Address: Leeds United, Elland Road, Leeds 11. Tel. 716037.  
Metro Buses: Tel. 451601.

### RUGBY

If the round ball game isn't for you then don't despair for Leeds is well represented in both types of rugby. The league ground, next door to the cricket ground in Headingley, can prove to be the venue for a good night out and you can soon get caught up in the rather partisan atmosphere.

Flying fists and head-butts are confined to the pitch, and although no longer one of the game's giants LEEDS normally come good in one of the competitions.

Leeds R.L.F.C., St. Michaels Lane, Leeds 6. Tel. 786181

Headingley R.U.F.C., Bridge Road, Kirkstall, Leeds 5. Tel. 755029

### CRICKET

Although not the most successful of teams in recent years, Yorkshire C.C.C. still have a great tradition to uphold and having recently lifted the John Player trophy next season looks more promising.

With the recent departure of Geoffrey Boycott the side will undoubtedly be depleted and whether you thought he was God, or the most boring batsman to ever grace the game, the controversy he provided both on and off the pitch will be greatly missed.

Headingley is a great place if you want to avoid some last minute revision, and even if play is rained off you can find refuge in the reasonably priced beer tent.

Both county games and Test matches are played at the ground but not always

during term time. Test matches are particularly hard to get into so book early.

Yorkshire C.C.C., Headingley Cricket ground, Headingley Lane. Tel. 787394

### SWIMMING

If you feel like drowning your sorrows, literally, then don't head straight for the union bar. Try the international pool which boasts some of the best swimming facilities in the North. The pool also possesses a sauna and solarium, both of which are reasonably priced.

The complex also hosts several galas and competitions, but despite its claim to be an Olympic sized pool, it's certain that the games will never be held in Leeds - due to an error in planning the pool is 4cms short of the required length.

Leeds International pool, Westgate, Leeds 1. Tel. 38696

### ICE SKATING

Unfortunately this is the one thing that Leeds does not possess, but with the nearest rink at Bradford you won't have far to travel. If you're daft enough to trek all the way to Bradford in order to get a bruised arse and laughed at by the assembled crowd then bus and train services are available.

The bus is probably a safer, cheaper bet owing to the introduction of Metro buses new 'off peak' fares

The bus is probably a safer, cheaper bet owing to the introduction of Metro buses new 'off peak' fares (max fare 30p).



Lacrosse - country running?



# Leeds Student Sports

## RUGBY USA

After a long and arduous three and a half weeks' tour of the East Coast of the U.S.A., to L.U.U. Rugby Club returned to Leeds having learned many things about rugby in North America - not least the overwhelming enthusiasm with which the colonials have adopted the game. The results indicate that the gap in playing ability between Leeds and New England is shortening every year.

The opposition usually consisted of college graduates who had made the switch from American football to Rugby Union. They were generally exceedingly

large and very physical in their approach to forward and back play. This factor, along with the burdensome heat - the game in Washington being played in 105°F - made our only advantage our technical superiority in tight play and rucking.

The tour, which is a biennial event for the University club, included games in Washington, Baltimore, Philadelphia, Connecticut, New York and the Blackpool of the East Coast, Montbank, Long Island.

As anyone who has ever toured knows, even if just to Bridlington for a weekend, touring is also a great social

event. Only one of the clubs we played actually has a clubhouse, so at all the rest we were treated to a 'cook out' at the house of one of our hosts. 'Cook out' is a peculiarly American pastime of grilling anything and everything in sight and eating to great excess. Drinking of course was necessary due to the intense heat!

L.U.U. Rugby Club returned with many memories of our North American tour and all will recall the great and very generous hospitality of our hosts without whom no tour would have been possible  
**ELDRED BUCK**

**IF YOU WANT TO WORK FOR LEEDS STUDENT THEN COME TO 155 WOODHOUSE LANE TOMORROW AT 3.30pm - NEXT TO THE FENTON**

### Personal

★★★★★  
Bad luck Jonny.  
★★★★★  
Boddington residents seek new dealer. Apply Millgarth Police Station.

★★★★★  
Happy Birthday Bruce. Love Barry and the Carnegie boys.

★★★★★  
Whatever happened to Friday? moaned Harry the Horse.

★★★★★  
Can Militant speak English?  
★★★★★  
When are you coming to power, Groany?

★★★★★  
Hello John -

★★★★★  
If you wish to annoy/enlighten people with your caustic comments/merry japes, the personal column is for you. Please hand entries in by noon Wednesday 10p a word.

★★★★★  
Confucius he say do not despise the emu for not flying, for who is to say he won't live in Devonshire Hall.

★★★★★  
Ismaili Students - Please contact me at 32 Harold Road, Leeds.

★★★★★  
Man and Machine in Perfect Harmony. Flavio, his, lube, the Road, a car (but Flav loves his petrol tank!!)

★★★★★

★★★★★  
Lost - one hamster, plus sel-lotape. Apply Rag Office.  
★★★★★  
Axeman Berkley feels similar.  
★★★★★  
Flopsy Rabbit loves Pink Snuggles. I missed you.

### Classifieds

#### NIGHTLINE

For someone to talk to and for information, 8.00 p.m. to 8.00 a.m. every night. 552602.

**CAN YOU HELP NIGHTLINE?**  
Training session this Saturday 10.00 a.m. Union Building.

**LU.U. BOOKSHOP**  
Will be open from 9.00 a.m. to 7.00 p.m. Monday to Friday next week.

**NEARLY NEW CLOTHES** will be on sale this Friday and every Friday. Union Extension, 8.30 a.m. to 3.30 p.m.

**TRILBY HATS** - GRANDAD SHIRTS - MOHAIR JUMPERS - EVENING SUITS & JACKETS - HARRIS TWEED JACKETS - LADIES & GENTS SHEEP SKIN COATS - WOOL JUMPERS - FLAT CAPS - SKIRTS - BLOUSES - DRESSES - Goods kept for two weeks for small deposit - cheques taken.

**SKINTIGHT RUBBER JUMPSUIT** for sale. Only one previous owner. £30.00 o.n.o. Apply Union Exec Office. No time-wasters.

**BRAINLESS BOZO** seeks entrance into Ents. Advice welcomed. Box 42.

it's only  
**£12.50**  
and it happens  
every 15 seconds

Every 15 seconds of the day during the first few weeks of term a student takes out a Personal Possessions policy from Endsleigh.

#### Why

- With the rising risk of theft it makes sense for them to protect their possessions.
- At premiums from only £12.50 per year, it is probably the best policy available to them.
- This policy is by far the most popular amongst students. Students' Unions and college authorities.
- Endsleigh are the only insurance service recognised and supported by the N.U.S.
- Get protection this minute - call in at the Endsleigh Office below for further details:-

6 Fenton Street, Leeds  
Endsleigh Office (0532) 457441

**Endsleigh**  
The NUS name for insurance

**MIND BOOKSHOP**  
tel. 694146

155/157 Woodhouse Lane, Leeds LS2 3EF

**SCREEN PRINTED T-SHIRTS & SWEATSHIRTS**



Leeds University Union

## Women's Safety Minibus Service

The minibus service runs every night after dark for all women students and Union staff. Women feel that it is vital to their safety and enables them to maintain the independence and freedom of movement which is their right. Please note that if a group of three or more women are going to the same destination they should not take up places on the minibus needed for women alone or in pairs.

**JOURNEYS FROM THE UNION** - The minibus leaves the Union steps at times displayed in Freeback and general publicity. Just wait in the foyer.

**OTHER JOURNEYS** - If you want to be picked up from any other address in Leeds you must book your journey in advance. Phone the Porters Office on 439071 at least one hour before you need to be collected. Please be ready in plenty of time so as to avoid delay. If you do not need to use the minibus please cancel your booking. No collections will be made after 11 p.m.

**BOOKING IN ADVANCE** - Bookings can be made up to a week in advance - just fill in the booking form in Executive Office. Make sure you give sufficient detail for the driver to find you and please write clearly.

**QUERIES/COMPLAINTS** - If you have any queries, complaints or suggestions please complete a form, available from the Porters Office, and place in the Suggestions Box in the Union Foyer. These will be dealt with by the General Secretary.

**COLLECTIONS BOX** - The service is provided completely free of charge but obviously costs the Union a considerable amount of money. Please contribute as generously as possible to ensure that we can continue this vital service.

**DRIVERS** - The minibus drivers have a difficult job. Please have patience - delays must be expected. Further details are available from the General Secretary in Executive Office.



LEEDS  
UNIVERSITY  
ARCHIVES