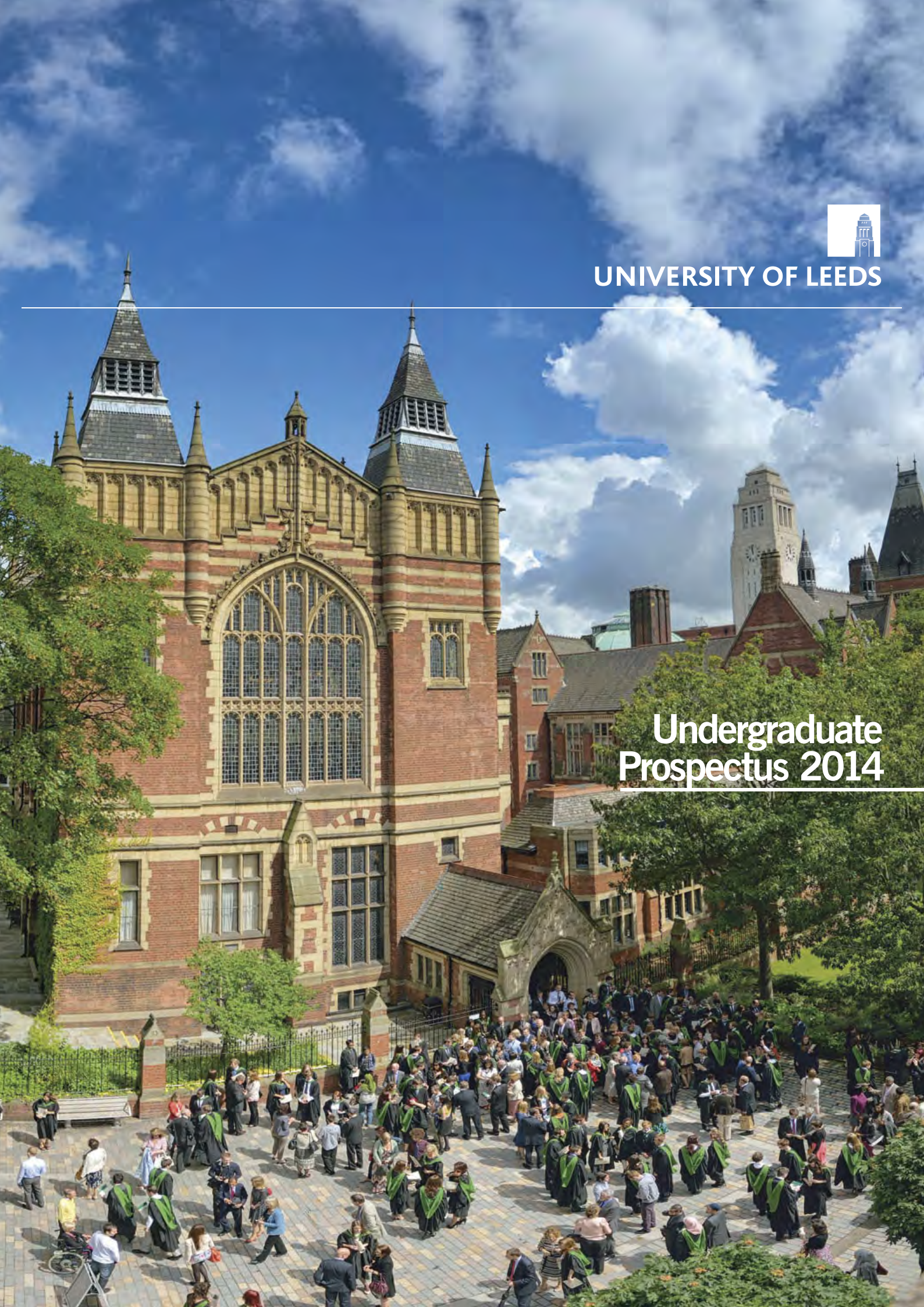




UNIVERSITY OF LEEDS

Undergraduate Prospectus 2014



Welcome to Leeds

This prospectus covers everything about studying with us. You'll find the things you need to know, how to apply, and what the city of Leeds is like, as well as some things you might want to know, such as the research happening on campus which is having real-world impact, what previous graduates have achieved and what our students say about studying here.

As this is a pdf of a printed document, we advise you to look at our website www.leeds.ac.uk for the most current information on courses, the qualifications you will need to apply and fees and funding. You can also give us a call on **0113 243 1751**.

Or, for the very best way to find out more, come and visit us on one of our open days. It's a great way to explore our campus and meet some of the staff who will be teaching you. You'll also be able to chat to current students and find out what life is really like in our city and at our University.

Legal

For current information on courses, fees and entry requirements please visit our website at www.leeds.ac.uk/undergraduate

Whilst the University endeavours to ensure that the information contained in this brochure is accurate at the date of publication, the University does not accept liability for any inaccuracies contained within it. Where circumstances change outside the reasonable control of the University, the University reserves the right to change or cancel parts of, or entire, programmes of study or services at any time without liability, even after students have registered at the University. Circumstances outside of the University's reasonable control include; industrial action, over or under demand from students, staff illness, lack of funding, severe weather, fire, civil disorder, political unrest, government restrictions and concern with regard to the transmission of serious illness. The University's contract with its students does not confer third party benefits for the purposes of the Contract (Rights of Third Parties) Act 1999.

OPEN DAYS

www.leeds.ac.uk/opendays

Tuesday 18 June 2013

Friday 21 June 2013

Saturday 22 June 2013

Saturday 14 September 2013

Saturday 12 October 2013



@comingtoleeds



www.facebook.com/universityofleeds



www.youtube.com/universityofleeds

Contents

Why Leeds	4
Academic discovery	
Learning in a research-intensive university	8
Research excellence	10
A creative campus	14
Academic facilities	17
Part-time study	18
Student Life	
Accommodation	20
Leeds University Union - Love your time at Leeds	24
Sport and fitness	27
Leeds – the city and region	30
Your future	
Study abroad	34
Year in industry	36
Leeds for Life	40
Preparing for your future	42
Student enterprise and entrepreneurship	44
Join a global network of Leeds graduates	46
Help and support	
Student wellbeing and support	50
International students	52
Money	
Costs and finance	55
Scholarships and bursaries	56
Essential information	
Applying to study here	60
Open days and find out more	62
Courses	
Foundation courses	64
Joint honours	68
A-Z of courses	click here
Maps and how to find us	
Our campus	74
Leeds and the UK	76-77



Why Leeds

Choosing to study here is your chance to join an elite university where you will be taught by academics who are experts in their field. We are part of the prestigious Russell Group of research-intensive universities and are one of the top 100 universities in the world (*QS World University Rankings 2012*).

Research, learning and teaching

Through our research power and the funding this attracts, we are able to invest in world-class facilities and teaching staff who are actively engaged in cutting-edge research. This means you will be taught by internationally renowned, inspirational academics working at the forefront of their fields – academics who share your passion for the subject. Our staff have been awarded more National Teaching Fellowships than any other English university, demonstrating the high quality of our teaching.

We recognise that when you join a university, you will experience a change in the way you learn. Your personal tutor will guide you through your transition from school to the University of Leeds. In addition, you will have access to student mentors; they are a great source of information and support because they have been exactly where you are now.

Our module and elective system means that you will have the chance to benefit from interdisciplinary learning and to take some subjects outside your course. (For more information about learning and teaching see page 8.) As a student here, you'll have opportunities to get involved in some of the research happening on campus – each year a large number of our students work alongside our academics on research projects. (For more information about our research see page 10.) Most of our courses offer you the chance to study abroad or take a year in industry as part of your degree. (To find out more about the options to study abroad or to spend a year in industry see pages 34 and 36.)

More than a degree

Ours is a vibrant and international campus, with more than 30,000 students from over 145 countries choosing the University of Leeds. You'll find state-of-the-art facilities to support your studies, including a dedicated Language Centre, one of the finest academic libraries in the UK, and outstanding computing resources.

There are a wide range of co-curricular opportunities to take advantage of, from volunteering locally or abroad to performing in student productions or joining sports teams. Leeds University Union has over 250 clubs and societies, so you can further your interests or try something completely new.

Our achievements

At Leeds, we're proud of our staff, our students and their successes. Here are just a few examples of what other people say about us:

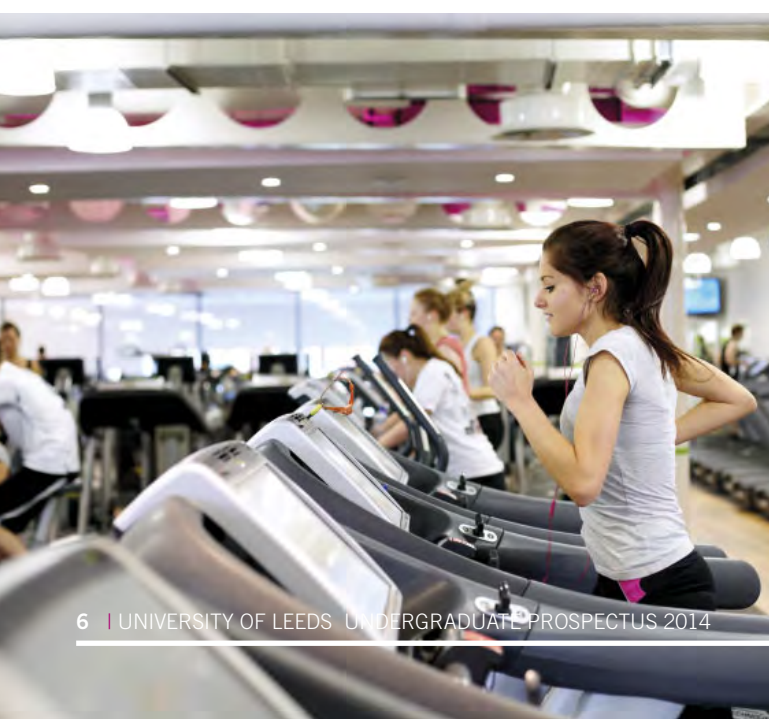
- 87% of our final-year students are satisfied with their experience at Leeds and 90% of our final-year students rated their course as intellectually stimulating in the 2012 National Student Survey (NSS).
- We have been awarded 17 National Teaching Fellowships (given to academics in recognition of their imaginative and innovative learning and teaching methods). That's more than any other English university – reflecting the excellence of our teaching.
- We are a top 10 university for research in the UK, according to the latest Research Assessment Exercise.
- We have been awarded the biennial Queen's Anniversary Prize, the country's highest accolade for an academic institution, twice in a row (in 2009 and 2011).
- The University was one of only two institutions reviewed by the Quality Assurance Agency (QAA) earlier this year to receive a commendation for its enhancement of the student learning experience.
- We are in the top 100 universities in the world (*QS World University Rankings 2012*).
- We have one of the UK's best students' unions. 90% of final-year students gave it a positive rating in the NSS and our students' union is the only one in the country to receive two gold standard awards for the Students' Union Evaluation Initiative (SUEI).

Top 100

We are part of the prestigious Russell Group of research-intensive universities and are one of the top 100 universities in the world (QS World University Rankings 2012).

17

Our staff have been awarded 17 National Teaching Fellowships, more than any other English university, demonstrating the high quality of our teaching.



Learning in a research-intensive university

When you enrol at the University of Leeds you will join a community of outstanding scholars who share your passion for your subject and are committed to helping you develop your full potential. Research is at the core of our learning and teaching. This is reflected in the content of your lectures and seminars, which will be delivered by some of the most respected academics in the world.

We recognise that studying at university is very different from school. To help you with this transition, you'll benefit from a structured support system, including a personal tutor with whom you'll have regular and structured meetings. In addition, you will be developing the skills you'll need to become an independent learner. To find out more about some of the support available to our students, see page 50.

Our staff are in demand across the globe – be it developing new technology and medical treatments, advising multi-million pound organisations or influencing government policy. First and foremost however, they are at the University to use their knowledge and experience to shape your learning and ensure you have the best possible experience.

Our approach to learning and teaching is geared towards developing your knowledge and skills, and training you to be independent and to think critically. This means that you will be taught through a combination of lectures, seminars and tutorials with additional time allocated to private study, project work, laboratory practicals and fieldwork.

From day one, you will experience how knowledge is created and learn in an environment that encourages academic enquiry and discovery.

Partnership

We will work closely with you to ensure we help you to adjust to university life, meet your expectations, respond to your feedback and let you know what we expect in return. The Partnership, an agreement drawn up by students and staff, sets out the basis of this vital relationship. It describes what all members of the University community can expect from each other for the benefit of us all.

Experience the latest in learning technology

Our Virtual Learning Environment (VLE) gives you instant access to a wide range of learning resources, including reading lists, past examination papers, skills guides and assessment guidelines. It helps you plan your studies effectively by providing easy access to timetables, announcements and coursework deadlines. It also provides an interactive learning forum through a range of tools including tests, blogs, lecture notes, podcasts, surveys, wikis and discussion boards.



Dr Neil Morris Faculty of Biological Sciences

Dr Neil Morris (pictured) has been awarded a National Teaching Fellowship in recognition of his contribution to learning and teaching at the University. He has also won a number of awards for teaching excellence, including the Society of Biology's Bioscience Teacher of the Year, the Otto Hutter Teaching award from the Physiological Society and Most Innovative Teacher at the Leeds University Union Student Choice Awards.

"Throughout my academic career I've maintained my involvement in research but teaching has been my main focus. I get a real buzz from interacting with students who want to learn and who are excited about my subject. It's not just a case of teaching facts; it's about getting them to understand concepts. I love my subject and I like helping other people understand it.

So, in advance of my lectures, I will always give students resources, such as a handout, maybe some YouTube videos to watch or a quiz on the VLE to find out how much of the topic they understand. During the lecture itself, I record the audio and sometimes I use tools to capture the slides and any drawings I do on the SMART board.

This gives students the opportunity to 'listen again' which is incredibly useful if they need to revisit difficult material, as they can listen repeatedly to increase their understanding.

I'll often let students 'chat' using their mobiles or laptops – asking questions which will appear on the screen at the front. This really helps to make the lectures interactive and allows students to ask questions or make a contribution without having to put their hand up.

I also use voting handsets. I'll put up a question, the students will vote for an answer and then I'll get them to talk to a neighbour about why they picked that answer. It's a good way for me to gauge if they've understood a concept, for the students to test their knowledge, and to generate a class discussion.

I like to use social media to encourage broader reading around the topic. After the lecture, I'll do a feed that goes to the VLE, to Twitter and to Facebook with follow-up comments about the lecture or additional resources that I've found. Using blended learning this way allows students to access the resources in a way that suits them."

Research excellence

Be part of something world changing

Whatever subject you choose to study, you will find that research is at the heart of your learning. Study here and you will experience an inspirational learning environment and will be taught by academics who share your passion for the subject.

As a Russell Group university we attract staff who are leading experts in their field. This means that from day one you will be taught by distinguished academics working at the cutting edge of their specialism. The quality of our teaching and research means you will be close to discoveries and breakthroughs that are having a real impact on the world.

We have partners in industry worldwide, and we work collaboratively across schools and departments to make the most of our vast knowledge and research excellence – creating a rich, stimulating and exciting environment for you to learn in.

There are lots of opportunities for you to contribute to research happening on campus. Each year large numbers of our students work alongside academic staff on research projects that have global impact. Research placements may be available right from the start of your degree and research projects in your final year provide the chance for you to design and direct your own piece of research. Here is a taste of the latest research we have been working on, all of which feeds into our teaching.

Top 10

The latest Research Assessment Exercise placed us in the top 10 universities for research in the UK.

A silver bullet to beat cancer?

One of our studies has shown that silver is as effective as the leading chemotherapy drug in fighting cancer cells – and may have fewer side effects. Chemotherapy can be a very gruelling experience for the patient. Finding effective yet non-toxic drugs is an ongoing problem, and these preliminary lab results are an important step forward.

Testing swimsuits for Speedo

Elite swimmers have academics from our School of Earth and Environment to thank for their latest 'low-drag' swimwear. Working alongside scientists from Speedo's own Aqualab, the team used lasers and flume tanks to test samples of fabric. By simulating the speed of an internationally competitive swimmer, they were able to compare how water flow changed over the different materials and use the results to produce the next generation of swimwear.

Creating energy from light and air – new research on biofuel cells

Our researchers are studying how to make electricity from electrodes coated in bacteria, and other living cells, using light or hydrogen as the fuel. The long-term aim of the research is to develop more efficient biofuel cells, seen as the future of electronics. Because biofuel cells are powered by readily available biological materials, they have the potential to be used indefinitely when electricity is required at places where it is not possible to replace or recharge a battery.

Discovery of new muscle repair gene

An international team of researchers from Leeds, London and Berlin has discovered more about the function of muscle stem cells, thanks to next-generation DNA sequencing techniques. The work, which was co-led from the University of Leeds' School of Medicine and the Charité, Berlin, means that accurate genetic testing and diagnosis will now be possible for devastating progressive muscle diseases.

Volcanic plumbing exposed

Two new studies into the 'plumbing systems' that lie under volcanoes could bring scientists closer to predicting large eruptions. International teams of researchers, led by the University of Leeds, studied the location and behaviour of magma chambers on the Earth's mid-ocean ridge system – a vast chain of volcanoes along which the Earth forms new crusts. Finding out where magma chambers lie and how they behave can help identify early warning signs of impending eruptions.

Research excellence

Led by an interdisciplinary team, 'You are what you ate' is an innovative project funded by the Wellcome Trust which aims to encourage public debate and personal reflection on modern eating habits through exploration of the dietary choices of the past.

Learn more about the project at www.leeds.ac.uk/yawya

Dr Alex Bamji
Lecturer in Early Modern History
Dr Iona McCleery
Lecturer in Medieval History and 'You are what you ate' project co-ordinator

Alex, Iona and Katrina are pictured in the Special Collections room of the Brotherton Library, November 2012.

"We saw there was a way to get undergraduates involved in the project and it has been very fruitful on both sides.

When we first met Katrina, we thought, 'she's really good academically but what would she be like in front of a whole bunch of kids at events?' And she's brilliant – she has really grown in confidence. It's hard to develop that sort of self-belief just through reading; students need presentation skills too, and the knowledge that they've actually gone out and found something new.

Research skills are so valuable to graduates. Our students should be able to go into any job, and not be phased when somebody presents them with a great pile of information and says: 'Right, synthesise that and give us a report by 9am tomorrow morning.'

All our students have opportunities to engage and participate, and they benefit directly from the project because it feeds into our teaching. They get to hear about research that has just happened, see photographs of work in progress – material they simply couldn't get from a book."



Katrina Longhurst
2nd year BA English Language and Literature
Undergraduate Research and Leadership Scholar

"Coming to university is a real culture shock, but once you have settled in I'd advise you to be proactive. Seek out opportunities outside your course to make the most of your experience.

There are two sides to my involvement in the project. There is the public engagement aspect, which includes helping out at food festivals where we talk about medieval diet and put on cooking demonstrations. The other side is my independent research topic. I chose to look at the recipes claiming to cure melancholia in Special Collection's 17th century cookery books. Today, 'mood food' is still used against depression. If you can take dark chocolate, which we're told boosts serotonin, rather than Prozac, why wouldn't you? I've always been really interested in mental health, so exploring what people thought about how food affects mood has been fascinating, and not that dissimilar from today. I'm really looking forward to my next year of research which will focus on recipes relating to maternal health in the same period.

I love my subject and I've been taught by people who love it just as much. That's what made me so passionate and encouraged me to get involved with things like this."

Read Katrina's research blog: <http://earlymodernrecipes.wordpress.com>

A creative campus

The University of Leeds is a creative community, with a vibrant and distinctive cultural life. There are dozens of ways to immerse yourself in the arts, or to get involved in performing. Or, if you'd rather just sit back and enjoy, there's no shortage of things on offer.

Located in the Parkinson building, the Stanley & Audrey Burton Gallery showcases the University's outstanding art collection, which ranges from the 16th to the 20th century. The Gallery also features a regular programme of temporary exhibitions, bringing together paintings, drawings and sculpture. Admission is free to all.

Stage@Leeds is the University's publicly licensed theatre complex. A contemporary performance space, it has excellent technical facilities and includes a 180-seat auditorium, a smaller experimental theatre and a dance studio. Productions are diverse, from *Romeo and Juliet* to *Hero* – a work by Riccardo Meneghini, one of the region's most exciting choreographers. The theatre also features NEWK (NEw and unfinished Work), a supportive platform during which performers can test ideas at any stage of development in front of an audience.

DARE is a unique collaboration between Opera North and the University of Leeds, the first partnership of its kind in the UK:

- Each year 10 students participate in placements and internships at Opera North in areas including stage management, marketing and PR, arts administration, and music.
- Opera North experts deliver 10 seminars annually to undergraduates about the roles and operations of an opera company.
- Students are recruited to work alongside practitioners on defined projects, including education activities with young people with Asperger's.
- Approximately 20 students work with Opera North Education each year to develop and deliver workshops in primary schools
- Over 600 students have observed the opera production process and engaged with the creative team since DARE began.

A company with a rich and varied past, Marks & Spencer has teamed up with our University to expose students to the application of research in a commercial environment. A living archive has been moved to the stunning purpose-built Michael Marks building on campus. The archive is also open to the public and offers a fascinating insight into a national institution.

The Leeds Poetry Centre invites poets along for regular readings, and the new International Writers at Leeds series offers an opportunity to hear successful writers from across the globe.

Our extensive International Concert Series offers a varied programme of events and includes jazz, traditional and folk music, classical and contemporary/avant-garde, as well as popular music. The concerts take place in the Clothworkers Centenary Concert Hall, a beautifully refurbished space that holds up to 250 people. Others take place in the University's Great Hall – another truly impressive venue.

The Stanley & Audrey Burton Gallery

Since it was first established in 1970, the Stanley & Audrey Burton Gallery has gone from strength to strength, and is now an Arts Council England accredited museum. Located at the heart of campus, the Gallery displays innovative contemporary exhibitions, as well as treasures from the University Art Collection and the University Library Special Collections.



Charlotte de Drouas

2nd year BSc Nutrition

Pictured in the Edward Boyle Library, November 2012.

“My course has a lot of contact hours, but when I’m not in lectures or labs, I like to study in the nooks and crannies I’ve discovered across campus. The Hidden Café is great, and I use the Edward Boyle Library a lot.

I like how the libraries and IT clusters are spread out around campus, and the mobile print system is a great idea. Instead of having to log into a University computer to print your work, there’s a specific email address you can send your document to and once you are on campus you simply swipe your student card and print! The Desktop Anywhere service is really accessible too – it means I can use the University’s computer programmes without having to be on campus. Even if I was researching across the globe, I could still be plugged into the Uni!”

Academic facilities

We’re continually investing in the best facilities for you. From brand new laboratories and studios to one of the largest and most impressive libraries in the UK, you’ll find everything you need for your studies right here on campus.

Visiting the campus is a great way to see the facilities on offer for yourself – see page 66 for details of our open days, or go to www.leeds.ac.uk/visitus

University library

Our library is one of the major academic research libraries in the UK. The University’s rich and extensive print, online and manuscript collections, gathered over 100 years and added to all the time, attract students and scholars from around the world.

As well as access to all the books you’ll need for your course, you will also have a host of electronic resources including e-books and over 35,000 online journals at your fingertips, accessible from home, halls of residence or anywhere else.

Three libraries on the main campus provide a variety of different working environments, with flexible group study areas as well as silent individual study space. All feature excellent IT facilities as well as access to the University’s wireless network if you want to work on your own laptop.

We are planning an additional undergraduate library development with 1,000 more seats, as well as group, quiet and silent study spaces and dedicated IT zones. Housing over 3.5 million items, including print and online books, journals and special collections, it is due to be completed in 2015.

<http://library.leeds.ac.uk>

Library skills advisors – here to help you

Our Skills@Library service can help you develop the academic skills you need to succeed at university and in your future career. We can help you become a more effective learner and researcher, to communicate more effectively, manage your time and much more: skills not just for the next few years, but for life.

Take advantage of our:

- interactive and informative workshop programme on topics such as ‘finding academic information online’, ‘effective presentations’ and ‘reading fast, reading more’
- online resources – to work through tutorials at a time and pace that suits you
- one-to-one advice – drop-in sessions for maths and academic skills help
- rooms for group working, including those with wireless internet access, video conferencing and presentation equipment.

Computers and IT

We have some of the best computing resources in the country, according to *The Guardian University Guide 2012*.

Our facilities are centred on you – most of our 46 IT clusters across campus are open long hours and most are available 24/7, ensuring you can study when it suits you. There are about 1,700 centrally provided networked PCs available on campus – including in our 11 cafés. All areas have free, high-speed wi-fi and there is fast internet access and free TV channels over the network in the halls of residence. Our Desktop Anywhere service enables you to log in to your University desktop and software securely from anywhere in the world.

A single log-in will give you access to all the information and resources you need, from the University’s Virtual Learning Environment (VLE) to personal timetables, academic and social groups and even our two new mobile apps. With the Blackboard Mobile Learn app you can access the University’s VLE from your mobile device; view content, participate in discussion boards and take tests. UniLeeds brings together useful information in one app, such as the library catalogue, campus maps and computer cluster availability. Our experienced Help Desk staff are here to give you IT support by phone, email or in person.

The Language Centre

Our specialist Language Centre offers year-round English language courses to support international students before and during studies. These courses are designed to improve English language skills and to prepare students for academic undergraduate or postgraduate study in the UK.

The Language Centre also provides students on any degree programme at the University with the opportunity to study modules in 12 foreign languages. These modules are offered at levels from beginner to advanced and allow students to accrue a further 10 to 20 credits.

Open to all students, our large Self-Access Area is somewhere you can study independently, and get access to learning materials in over 40 different languages. We also have an extensive collection of foreign language feature films and documentaries, and computer-assisted language learning. Our satellite television provides access to over 50 channels in 20 languages.

We have a dedicated language learning advisor on hand to help and we can also put language learners in contact with native speakers for conversation exchanges.

www.leeds.ac.uk/languages

“The campus, just 10 minutes from Leeds city centre, is constantly evolving both academically and in terms of facilities. *The Sunday Times University Guide 2013*”

Part-time study

The option to study part time is available to both mature students and school leavers. It can be an ideal way to gain an academic qualification while developing your career at the same time.

Many of our degrees can be studied part time. Visit our website to find out if the course you are interested in has a part time option. As a part-time student, you will follow the same course as your full-time counterparts, but typically take six rather than three years to complete a degree. Patterns of attendance vary but usually involve being at the University a few times each week.

The University also offers some bespoke part-time programmes, which are timetabled to maximise the possibility of students combining study and work. These include:

- Foundation degrees and diplomas of higher education, each with linked 'top-up' honours degrees (programmes in Learning Support, Child and Family Studies and Business Management)
- Certificate of Higher Education in Islamic Studies, with potential to continue study on the BA Islamic Studies course
- A wide range of professionally related courses in healthcare.

Full details of all part-time undergraduate programmes, including how to apply, are published in a separate prospectus which is available from the Lifelong Learning Centre.

0113 343 3212
lifelonglearning@leeds.ac.uk
www.llc.leeds.ac.uk

Mature students

The University of Leeds welcomes applications from mature students for full-time and part-time programmes. Your life and work experience mean there are alternative entry routes available to you other than formal qualifications – for example, a validated Access course and the Access to Higher Education Diploma. You could also use our alternative entry scheme to demonstrate your readiness for university study or apply for one of the foundation programmes listed on pages 64-66.

Fees and finance

Part-time students are eligible for the same government support for tuition fees as full-time undergraduate students. You will also be able to benefit from the generous financial support package offered by the University.

The University's standard tuition fee (2014) for UK or EU students on undergraduate courses is £9,000* per level. For part-time students, the number of levels involved in each type of course is the same as for a full-time student but the number of years you study will differ. The number of levels for different programmes of study is:

- Honours degree – 3 levels
- Top-up degree – 1 level
- Foundation degree/diploma of higher education – 2 levels
- Certificate of higher education – 1 level.

*There may be an inflationary increase to this fee, in line with government policy.

The Lifelong Learning Centre

The Lifelong Learning Centre (LLC) offers specialist support and programmes for mature and part-time undergraduates.

We provide:

- free, confidential and impartial advice, to help you make informed decisions
- a supportive 'home' for you during your studies – giving you dedicated space to study or meet up with others
- induction events for part-time students before other students arrive on campus
- social events and drop-in meetings open to all part-time and mature students across the University
- workshops and one-to-one sessions to help you grow in confidence as a student and achieve success
- practical assistance with negotiating administrative procedures, finding financial information and accessing disability support resources.

Find out how higher education can boost your career prospects.

0113 343 3212
lifelonglearning@leeds.ac.uk
www.llc.leeds.ac.uk

Bonita Jones

1st year BA Sociology and Social Policy

Bonita is pictured in Cafe Maia, situated in the Marjorie and Arnold Ziff building on campus – also home to the Lifelong Learning Centre, December 2012.

"I've worked in accounts for the last 30 years but recently decided that I no longer wanted a job sat behind a desk all day. I have a passion for working with people so I wanted to go into a career helping others.

I was volunteering at a charity when a lady from the Lifelong Learning Centre came to talk to us about studying here as a mature student. I was really interested but didn't know what course to choose so I booked an appointment to come in and we talked through my different options – they advised me about which subjects would suit me best. I'm now studying Sociology and Social Policy and really enjoying it!

The support I've received from the University has been excellent. The staff in the Lifelong Learning Centre, and my course tutors have been really helpful and because of problems with my eyesight, I've also had support from the Disability Team."

Accommodation

Choosing a university is also about choosing a home. At the University of Leeds we guarantee* University accommodation for your first year, and are dedicated to helping you find the accommodation that best suits you. We also provide a wide range of support services to help you feel at home from day one.

*Restrictions apply relating to deadlines, residence and academic offer status. For more information about our guarantee please go to the accommodation website.

www.leeds.ac.uk/accommodation

Catered or self-catered?

Our catered residences range from large, purpose-built accommodation to smaller halls where the atmosphere is more traditional and close knit. Self-catering accommodation is a great alternative if you'd like to be more independent but still enjoy the benefits of being in a student community with a lively social scene.

Here are just some of the things we offer you:

- a choice of locations – on campus, close to the city centre, or further afield
- a wide variety of accommodation – from modern apartments to converted mansions
- a range of rents to suit different budgets
- a large number of en suites for those wanting private facilities, or shared bathroom for those looking to keep costs down
- clear pricing, making it easy to budget – no hidden extras to pay
- energy costs included
- free membership of the University's flagship sports centre, The Edge
- 24-hour internet access at no extra cost – including blanket wi-fi across all residences
- insurance for your personal possessions included in your rent
- additional facilities at many sites – common rooms, TVs, pool tables, bars, some even have their own gym
- a Residence Watch scheme covering all accommodation and a security service on call 24/7
- an efficient, responsive maintenance service
- social and sporting activities organised by students, for students
- advice and support from experienced wardens and resident subwardens
- good customer care – we are a founding member of the ANUK National Code of Standards, which is a quality guide for student accommodation and fully approved by the National Union of Students (NUS).

Make lifelong friends

Living with fellow students following different courses of study is a great way to make friends and broaden your horizons.

There are plenty of opportunities to get involved in social and sporting events. Every residence has a student residents' committee for organising activities and events during term time. Whether that's a film night, a trip to the great outdoors or an end of term ball, there'll be something for you.

You might want to find out who you'll be living with before you arrive – once you have been assigned to a hall you can check out the Facebook group for that hall and say hello to your future neighbours.

How much will it cost?

As a vibrant northern city, the cost of living in Leeds can be cheaper than other cities, but obviously how much you need to budget depends on lots of factors including the type of accommodation you choose – on or off campus, catered or not, en suite or not – there are lots of different options. Figures were not available at the time of printing, but the cost of University accommodation last year ranged from £83 to £177 a week, including insurance, internet access and energy costs, plus free membership of the University's sports facilities.

For the very latest on the cost of living in Leeds, and lots of information on our accommodation costs, please take a look at the following sites:

Our University accommodation website has lots of useful information relating to life in halls of residence including costs and what each hall is like.

www.leeds.ac.uk/accommodation

Leeds University Union's advice on money has a great section on the cost of living.

www.leedsuniversityunion.org.uk/helpandadvice/money/costofliving

Getting from A to B

It's easy to get to campus or the city centre from any of our residences. Some are on campus, others within walking distance, and those further away are on frequent bus routes.

Leeds has a fantastic bus service, with buses running throughout the day and into the early hours (usually until 3am). There are cycle routes along the main roads and bicycle storage facilities at most residences and on campus. The University also boasts the 'Velocampus' scheme which provides cycle support for staff and students, with low cost, short- and long-term bike hire, bike maintenance facilities and advice – helping to make Leeds a cycle-friendly campus and city.

Most residences also have some car parking spaces, but there is no parking on campus due to space restrictions. Instead, we encourage students and staff to make use of the excellent public transport system, which also helps to reduce our carbon footprint.

Vincent Varza

2nd year BA International Relations

Vincent is pictured with friends on campus in St Georges Field, with Henry Price Halls of Residence in the background, June 2012.

"Living on campus is perfect – my flat is only 10 minutes walk to the city centre, two minutes to the Union, and the lecture theatres are nearby so if I get up late I can run to my classes!

Staying in self-catered accommodation has meant that my cooking has improved, as I didn't want to end up just living off pasta! But if I don't want to cook, I'll go to the Refectory – it's great having that flexibility.

I remember on my first day that everyone was so friendly. Everyone made an effort to get to know each other and we all get on really well.

The rooms are a good size, modern and cosy, plus there is lots of storage space. You will never be lonely here. We all make a lot of effort to organise things together, but if you want some time by yourself, the rooms are quiet and perfect for that."



Accommodation

Accessible accommodation

If you are a wheelchair user or you have mobility difficulties we have several sites both on and off campus with accessible accommodation, as well as adapted rooms for students who are blind or partially sighted, or who are deaf or hard of hearing.

Whatever your disability or long-term health condition, we'll work with you to find accommodation that suits your requirements wherever possible.
www.leeds.ac.uk/accommodation/additional

Our guarantee to you

The University guarantees* single accommodation for first-year undergraduates and international undergraduates, provided you apply by the deadline.

75% of our students are given the accommodation they apply for, but you should be aware that we can't always give absolutely everyone their first choice (in common with most universities in the UK).

*Restrictions apply relating to deadlines, residence and academic offer status. For more information about our guarantee please go to the accommodation website.
www.leeds.ac.uk/accommodation

Finding out more

You can find out more about our accommodation and look at the specific residences we offer by visiting our website.
www.leeds.ac.uk/accommodation

You can also download a copy of our Undergraduate Accommodation Guide online. If you would like a hard copy of the guide, or you have any other queries about our accommodation, then call us on **0870 1200189** or email accom@leeds.ac.uk

Come and have a look

We usually hold a viewing day each year in the spring, when all our residences are open for you to visit and explore. You will be able to see facilities and talk to students and staff who are on hand to show you around and answer your questions – further details are available from March on our website.
www.leeds.ac.uk/accommodation

You can also visit some of our halls on our University open days (see page 62).
www.leeds.ac.uk/opendays



Guarantee

The University guarantees single accommodation for first-year undergraduates and international undergraduates, provided you apply by the deadline.*

LOVE YOUR time AT Leeds

When you come to Leeds, you become a member of Leeds University Union – that is pretty good news, because, even if we do say so ourselves, we're one of the best students' unions in the country (don't worry, many other people have said it too!*)

Our building is handy, right at the heart of campus, and offers you amazing events, services and opportunities all designed to ensure you love your time at Leeds.

We always make sure our vibrant building is buzzing with activity, which isn't hard as we're home to over 250 clubs and societies, lots of places to meet, chill out and study. Oh, and there are a few award-winning pubs, clubs, shops and food outlets knocking around too.

But, as fabulous as our square footage is, we are so much more than a building. We are a charity run by students, for students, so we understand exactly what university life is like. Being a student is fun (understatement), but sometimes it's hard too, so we're always ready and waiting to offer support, advice and a nice cup of tea if you need to talk to us about anything.

You can talk to us in person, on the phone, through our website, in the Twittersphere, on Facebook, in the street, via carrier pigeon (that's our favourite). Quite frankly – however you would like to reach us – you can and no matter what is going on in your life, we're here to support you. Last year during exams, we even handed out free massages and biscuits!



What are you into?

With over 250 activities to choose from, you'll be spoilt for choice at Leeds. You can get involved in anything and everything, from football to chess, wine tasting to swimming, dance to 'a cappella' (now those guys can sing) and even Quidditch! Plus, if you and your mates want to do an activity that we don't have a group for, we'll help you set one up. Yes, we're that nice.

Want to be part of something big?

At Leeds University Union we're all about supporting communities, both local and further afield. Our volunteering groups are amazing; they donate almost 20,000 hours and raise over £200,000 annually to support local, national and international causes.

Whether it's cycling to Berlin, organising a charity fashion show in Leeds or heading off to Uganda to support school building projects, our friendly volunteering folk are always up to something and love getting new recruits.

Fancy a spot of media experience?

Our outstanding media societies like *Leeds Student* newspaper, Leeds Student Radio and Leeds Student TV have all won national awards and acted as the springboard for many careers in the media. Jay Rayner (*The Observer*), Nicholas Witchell (BBC) and Paul Dacre (*Daily Mail*) all started out by getting involved with student media at Leeds. Could you be next?

Get out!

The Union has so much to offer in terms of night-time entertainment that you might never actually have to leave campus (handy eh?)

We've played host to some of the biggest names in pop and rock & roll, including Ed Sheeran, Alt-J, Professor Green, Rizzle Kicks, Labrinth and Florence & the Machine. Legendary rockers The Who have even graced our stage!

Our club nights offer something for everyone, from Friday night cheese at Fruity to silent fun at our headphone disco, plus we've got nights dedicated to retro hip hop, indie tunes, power ballads and everything in-between. If you love nightlife, you'll love what we line up in Leeds. If you're more of a quiet drink and a chat kinda person, we've got our very own traditional English Pub, The Old Bar.

Bag a part-time job

As we provide you with so many ways to relax, unwind and enjoy yourself, you may want to find some extra income to



Black History Month Student Campaign



Nights out at your Union



Snowriders Snowboarding Society



RAG in Uganda Volunteering Project



Florence & the Machine The Summer Ball



Varsity Rugby Tournament at the Headingley Carnegie Stadium

help fund your new lifestyle, well – we can help there too. Through our own agency Joblink, we can help you find secure, meaningful work with a trusted employer.

Students rule

Literally. As we are a student-led organisation, the 30,000 students at the University of Leeds decide what we do in the Union. So, if you get here and there is something you don't like about the Union, the University or the city of Leeds, you have the power to change it!

We take student ideas to forums to get other students to vote on them, plus the student body elect six students every year to run the Union on their behalf. So, if they are not doing what students want them to, they get a good old ear-bashing. It's a good system. Oh, did we mention we hold the national record for student turnout in elections? That's how much Leeds students care about us – their Union!

Check us out!
If you like what you've heard so far, you'll love the rest. So check us out at www.luu.org.uk for a sneaky peak on what is waiting for you at Leeds, or find us @leedsuniunion on Twitter and Leeds University Union on Facebook

*Who else thinks we're great: "By far the best Students' Union in the country (world) as well!" NSS respondent 2012 / "Excellent Students' Union with hundreds of different societies." NSS respondent 2012 / We're the only students' union to win the SUEI GOLD award twice, ever / We scored 90% in the NSS 2012 overall satisfaction rating / We've won Gold in NUS Green Impact Awards this year, plus our bars won a bunch of NUS Best Bar None awards too.

Leeds University Union

Andrew Seddon
2nd year BA Broadcast Journalism

Andrew is pictured in the Institute of Communications Studies radio studios, October 2012.

“During freshers’ week I joined almost every media society on offer. LSTV has been my main focus and I’ve gained tons of experience through that, in combination with my course.

I was chosen as an LSTV presenter and went on to win the Best Male category at the National Student Television Awards. I also applied to present at the Paralympics and it was amazing to be selected. It was such a great experience, which all started with me going on the Leeds University Union website and joining LSTV.

It’s not only a huge boost to my CV, presenting in front of 7,000 people, but the experience I gained and the contacts I’ve made will be great for the future.

My advice is to really go for it and do everything you can. Then when you graduate, you haven’t just got the degree, you’ve got a lot more on top of that; the sort of skills and experiences that will separate you from other people.”



Sport and fitness

Whatever your level of fitness, our University provides excellent opportunities to keep healthy and get active. So, whether you want to participate for fun, at club level or at the highest national and international standards, at Leeds you will be inspired to achieve your personal best.

The Edge, our flagship £12m indoor facility provides fitness, sport and wellbeing opportunities:

200-station state-of-the-art gym (the largest in UK higher education) complete with Technogym equipment and Sky TV

25m, 8-lane swimming pool with movable floor

sauna and steam room

squash courts

strength and conditioning rooms

three studios offering over 130 classes per week covering everything from yoga and pilates to circuits and salsa aerobics

climbing wall

Take the virtual tour <http://sport.leeds.ac.uk/virtual-tour>

In addition, the University has excellent outdoor facilities at the Weetwood Sports Park which include:

The most playing field space at a university in the UK with a total of 51 hectares of playing field space – the size of 50 international size rugby pitches (*Higher Education Statistics Agency 2010/11*)

7 floodlit 5-a-side football courts

6 floodlit tennis courts

2 floodlit sand-dressed hockey pitches

3G floodlit rubber crumb synthetic pitch

32 grass pitches (for rugby, football, lacrosse, American football, ultimate frisbee)

5 cricket squares

For those wanting an adrenaline rush, we also have two dedicated outdoor centres in two of the most challenging and adventure-packed national parks, right on our doorstep.

“ Keeping fit and staying healthy is an important part of the university experience. At Leeds, you will have plenty of opportunity to pursue all your sporting interests or perhaps participate for the first time. We have excellent facilities, and offer support, whether you want to participate for fun or at club and elite levels.

Stewart Ross, Head of Commercial Services

Take part

You can get involved with the Intramural sport programme, which is one of the largest of any university or college. This programme offers the opportunity to participate in organised, recreational sport on a regular basis in a wide range of sports and is a great way to make friends.

Leeds University Union (LUU) has 36 sports clubs which range from cycling to subaqua, basketball to sailing. Teams compete regularly at the highest levels in the British Universities and Colleges Sport (BUCS) leagues. Athletes in these clubs benefit from a range of support services such as physiotherapy, strength and conditioning work and quality coaching to help them further develop.

There are also opportunities for you to gain extra experience and develop your skills by volunteering as a coach, events organiser, steward or sports administrator in the local community.

World-class facilities for world-class athletes

In 2012, we played host to the Chinese Olympic team in the run-up to the London 2012 Games. The fact that one of the world’s most successful teams chose our University for their pre-Games training camp is a testament to the quality of our sporting facilities. In addition, the Canadian Wheelchair Rugby Team were so impressed with the accessibility of our sports halls that they held three training camps at the University prior to the London Paralympics.

We support world-class athletes each year in their academic and sporting lives through the Performance Sport Programme. Recent scholars on the programme included Paralympic table tennis player Kim Daybell and Olympic gold medalist in triathlon, Alistair Brownlee, MBE. All elite athletes who are studying at the University are eligible to apply for a sports scholarship.

Find out more about sport and fitness
www.leeds.ac.uk/sport

“ I’d tell anyone interested in combining a degree with competing in sport that it can be done – you just have to be prepared to not have a lot of free time!
Jonny Brownlee, University of Leeds alumnus and Olympic bronze medallist, triathlon

Sport and fitness

Nicola Capstaff

2nd year BSc Biology

Nicola is pictured in the 200-station fitness suite in The Edge, October 2012.

"I wasn't really into sport before coming to university but I knew I wanted to join a society and that I wanted to try something different. When I went to the fresher's fair the rowing team was really friendly, so I went along to their welcome night where you get to meet everyone and joined up after that – I'm now a senior on the rowing team!

As well as going out on the rowing boats, I also train at The Edge a few times a week. The gym at The Edge is great as all the equipment is really up-to-date and the people who work there, are all very friendly.

Fitting my rowing in around my studies has meant that I've got to plan ahead but time management is a good skill that you need to pick up anyway. Because rowing is such a team-orientated sport it's also improved my team building and teamworking skills."



Leeds – the city and region

Leeds is a vibrant city renowned as a centre for arts, sports, leisure, entertainment and nightlife. It has everything you would expect from a major city and is surrounded by beautiful, accessible countryside. With over 200,000 students living within the city boundaries, there is a real student focus, making it an exciting place to live and learn.

Arts and culture

As a student here, you'll have the opportunity to take advantage of the lively and continually evolving cultural scene that the city has to offer. From the internationally acclaimed Opera North – with whom the University has a groundbreaking collaboration – and the West Yorkshire Playhouse to a growing number of visual arts collectives and a thriving music scene, there is something for everyone.

Events

You'll soon discover that there is always something to do in Leeds, with the city playing host to numerous events throughout the year such as the Leeds International Film Festival in November, the Leeds Loves Food festival in May, and Christkindelmarkt, one of the UK's most established German Christmas markets, during the festive period.

Retail therapy

As one of the UK's top shopping destinations, Leeds boasts over two miles of traffic-free shopping set in the beautiful Victorian and Edwardian arcades and modern purpose-built centres. You'll find an eclectic mix of high street favourites, exclusive boutiques and vintage stores.

Food and drink

The city offers an extensive choice of places to eat and drink, whatever your taste or budget – from Jamie's Italian and Carluccios to many smaller, independent eateries. Many restaurants and cafés have special deals for students or early-bird menus ideal for a student budget.

If you want to stay in and cook, Kirkgate Market, where Michael Marks opened his penny bazaar (later becoming Marks & Spencer), is one of the largest undercover markets in Europe and has recently been commended in Jamie Oliver's Food Guide for *The Sunday Times*.

Nightlife

Nightlife in and around the city is known for its diversity, with clubs and bars offering music to suit all tastes. There are also plenty of live music venues in the city, including the new 13,500 capacity Leeds Arena, the O₂ Academy, the Cockpit, Brudenell Social Club and, of course, the University's Refectory, which has played host to hundreds of top bands and artists in the past 40 years, including most recently James Blake, Wild Beasts and Chase and Status.

Sport

Whatever your sport of choice, Leeds is home to some great sporting teams, from Leeds United Football Club at Elland Road to Leeds Rhinos and Leeds Carnegie Rugby teams, plus you could also see live Test Match cricket at Headingley stadium. But if you'd rather get active, one of the country's biggest real snow slopes is in easy reach, and the city has plenty of gyms and health clubs, including our own pool and fitness complex, The Edge.

Green space

Leeds is one of the greenest cities in Britain. There are many areas of natural beauty and historic interest such as Roundhay Park, Temple Newsam, Harewood House and Kirkstall Abbey – all of which are great for walking or relaxing.

The Yorkshire region

Leeds sits in the heart of Yorkshire and is in easy reach of historic towns and cities such as York, Harrogate, Ripon and Bradford, as well as spectacular countryside including the Lake District, the Peak District, the Yorkshire Dales and the North York Moors. All are perfect for walking or hiking – and provide the ideal environment for University groups and societies taking part in everything from kayaking to potholing. We also have two hostels in the Yorkshire and Cumbria countryside available for you to use.

Getting around

Located at the centre of the UK and enjoying excellent transport links, Leeds is well connected to the rest of the UK by affordable, frequent and extensive coach and rail services. You can reach London in around two hours and Edinburgh is just three hours away by train. Leeds Bradford Airport provides regular flights to major international destinations.

www.leeds.ac.uk/leedsandyorkshire

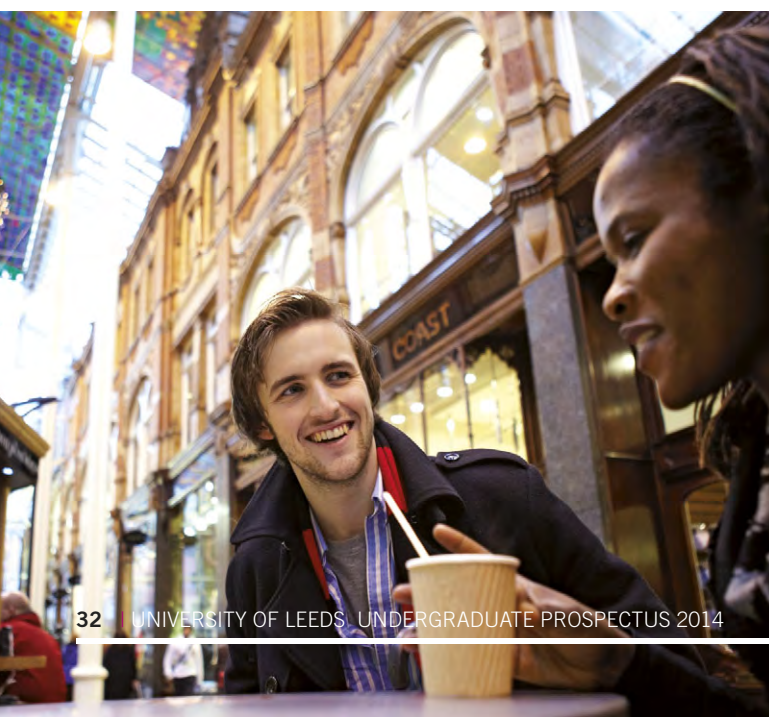
Laurina Austin-Seade 3rd year BA Linguistics and Phonetics

Laurina is pictured in the Corn Exchange, one of Leeds' beautiful historical buildings, which is now home to restaurants and boutique shops, October 2012.

"I came to Leeds because of the city. It's important for me to feel a good vibe from somewhere and as soon as I came off the train I got such a good feeling about it. I'm a city girl anyway and used to living somewhere busy, but I like the mix of old and new in Leeds and the fact that there is always something to do, no matter what you're in to.

My favourite place to shop is Victoria Quarter, and I even walk through there on purpose just because it's so nice. The Corn Exchange has some really good boutiques and niche shops for vintage clothes. You can tell the building has really been taken care of since its renovation and it's a chilled out place to go sit down with friends.

Leeds is very student friendly and being close to the city gives you so much choice. You never feel lonely or get homesick because everything you need is on your doorstep."



Study abroad

Our University has a global outlook, and our internationalisation strategy ensures this perspective informs everything we do. We attract world-class academics who have wide-reaching influence and are champions for international activity. We have links with over 300 institutions worldwide and over 5,000 international students study with us each year. All this means that you graduate with a truly global perspective – something highly valued by employers.

Study-abroad programme

Make friends, experience another culture, have fun, and at the same time, boost your employability. We actively encourage exchange programmes to enable our students to spend time at universities around the world and for international students to experience Leeds. It's a fantastic opportunity and also gives you the added extra that employers will be looking for when you graduate.

Unlike many universities, almost all our programmes give you the chance to spend a period abroad, usually for the full academic year. Choose from over 300 institutions – from Spain to Singapore. You will return to University having had life-changing experiences which can give a new perspective to your final year of study. You will gain confidence, broaden your horizons, and develop skills and experiences which can improve your career prospects when you leave University.

You could also be awarded an international or European variant of your degree, which will help you stand out to employers.

How it fits in with your studies

In most cases, students extend their degree to a four-year programme and spend their third year abroad. You won't pay the full tuition fees for your time studying abroad, but get a substantially reduced rate of just £1,350* for that year.

Find out if study abroad is offered with your chosen degree at www.leeds.ac.uk/coursefinder or email us at studyabroad@leeds.ac.uk

300

We have links with over 300 institutions worldwide and over 5,000 international students study with us each year.

Study in Europe

Funded by the Commission of the European Communities, the Erasmus scheme is a European exchange programme for university students, which could help you with tuition fees and provide a non-repayable grant to assist with the costs of studying abroad.

We have links with over 230 institutions across Europe, including universities in Madrid, Paris, Berlin, Amsterdam and Milan. Not all programmes require fluency in another language and in some partner institutions the teaching is in English. If you need it, we will provide you with advice on language learning opportunities before you go.

Study worldwide

Choose from over 70 universities across the globe, including many of the top-ranked institutions in the world. Popular destinations include the USA, Canada, Australia, New Zealand, Singapore, Hong Kong and Latin America.

<http://studyabroad.leeds.ac.uk>

* Subject to approval by the Office For Fair Access (OFFA). There may be an inflationary increase to this fee, in line with government policy.

“ I spent a year studying Psychology at Arizona State University in the USA. Living and studying in a different country provides a truly unique experience of that country and culture, that you cannot see any other way. Your eyes are opened to the ‘real’ side of the country, through the places you go and the amazing friends you make.

From the moment I decided I wanted to spend a year abroad, the Study Abroad Office was incredibly helpful, offering fantastic advice on the wide range of available places to go all over the world. I can't rate the study abroad programme highly enough – choosing to go to America was the best decision of my life.

Alex Keys, 4th year, BSc Psychology

Andrew Barney 3rd year BA French and Spanish joint honours

Andrew is pictured in Montreal during his year abroad, October 2012.

“As soon as I came to Leeds for an open day I just knew that this was the university for me, I was set on coming here. And the fact that I've been able to go abroad as part of my degree has been amazing.

Over the summer, I went to southern Spain to study at a language school for nearly four months, which was absolutely fantastic; a really great learning experience. I'm now on a study abroad year in Montreal, Canada.

Being abroad has not only improved my language skills but it's given me so much more. It's been a real confidence builder and I've become much more independent. When I've been to career fairs and mentioned that my degree involves studying abroad employers have been really interested in the skills I've gained.

Studying abroad has been a fantastic experience; it really is something special!”



Year in industry

There are lots of ways to experience the world of work when you choose to study here – from a full 12-month industrial placement (year in industry), to summer internships and shorter project work that you can undertake as part of your studies. Whichever you choose, it looks great on your CV, and proves to employers that you are experienced and motivated.

12-month placement

The 12-month placement gives you the chance to spend a year in industry with one of the hundreds of companies we work with each year, including KPMG, BMW, IBM, Marks & Spencer, PwC and Yorkshire Water. Choose this option and you will receive support from us throughout your placement and your course will convert from three to four years.

Find out if the course you are interested in offers a year in industry by visiting www.leeds.ac.uk/coursefinder

Help with funding

You will not need to pay full tuition fees while spending a year in industry. However, there is a substantially reduced fee to cover support and administration. For this year the cost will be £1,350*

If you take a work placement in Europe as part of your course, you could be eligible for the Erasmus work placement grant provided by the Commission of European Communities. Many different types of work placements are eligible, including those provided by the British Council Language Assistant scheme. For more information, contact the Careers Centre.

0113 343 7104
erasmuswork@leeds.ac.uk
<http://careerweb.leeds.ac.uk/erasmus-work>

Even if your course does not offer a placement, you can still take a Careers Centre work placement year module. This also offers you the option of gaining experience in up to three separate organisations during your placement year. Contact the Careers Centre for more information.

0113 343 5295
workexperience@leeds.ac.uk

Other work experience

You might want to take advantage of University holidays and take part in an internship over the summer, Christmas or Easter. It's a great chance to build your skills, giving you practical experience of commercial awareness, relationship building and networking, teamwork, and dealing with difficult situations. You'll also gain a real insight into working life in a particular company or sector. Your confidence will increase and you will be able to adapt to different environments more easily. Experience in industry could help you decide what kind of job you might like when you graduate and is a chance to forge links with employers and possibly gain a job offer.

The Careers Centre can help you find a placement and will help you make strong applications for the many holiday placements advertised by companies.

Recent examples have included students on courses ranging from Engineering to Business Economics taking paid work placements with Unilever, Goldman Sachs, IBM, Sainsburys, The National Trust, Opera North and John Lewis. The Careers Centre also creates internships in small, local and not-for-profit organisations exclusively for Leeds students.

<http://careerweb.leeds.ac.uk>

Part-time work

Many students choose to work part time, and the size of the city means there are lots of available jobs in Leeds. Working not only puts money in your pocket, it also helps you gain valuable experience. You'll find plenty of opportunities through the Joblink service.

www.leedsuniversityunion.org.uk/jobs

*Subject to approval by the Office For Fair Access (OFFA). There may be an inflationary increase to this fee, in line with government policy.

Jonathan Wilson 4th year BSc Electronic and Electrical Engineering

Pictured during his work placement at Datong, Leeds, October 2011.

"I really enjoy the electronic side of my course. One aspect is that we have to learn how electronic devices work at the very lowest level, so we have to learn about the underlying quantum physics – how the electrons move round in a transistor – it's mind blowing the stuff we learn."

I did a work placement at Datong near Leeds – it's high security because they make covert tracking devices for the police and government agencies; tracking beacons to go in cars or in money briefcases. I wanted to undertake a work placement as it's important to build up experience for your CV. At Datong I did a research and development project which really helped me to develop my communication, presentation and research skills. I designed a prototype for them – I had to design a circuit board and make it. It was good experience and they were really impressed. Engineering opens many doors – so after graduation I've got a lot of options."





Ceri-Elen Challinor and
Danielle Ray

4th year BA Fashion Design

*Ceri-Elen and Danielle are
pictured in the fashion design
studio on campus, November
2012.*

“For our year in industry we’d been thinking about setting up our own businesses and thought it would make sense to do it together. The company was called JAM and we sold quality handmade clothing with a vintage-inspired twist in a retail space in Affleck’s Palace in Manchester.

We were both interns and had to be each other’s supervisors, assessing each other’s development. Setting up a business is hard work, but you get out of it what you put in – and you’ve still got the safety net of the University in case things go wrong.

We got the Spark scholarship and the Careers Centre organised lots of talks from different people about tax, intellectual property and copyright laws – basically, all the stuff you need to know for a business. We’ve networked so much and met so many different people who have helped us on the way.”

Preparing for your future

In an increasingly competitive job market, our degrees and your wider experience at Leeds can give you the edge to help you stand out. We will help you develop the knowledge and skills you need to succeed, and give you plenty of extra opportunities outside your studies to increase your chances of securing that all-important graduate job.

Our commitment to your future works: 93% of our graduates are employed or studying within six months of leaving; the average is 69% according to the latest report from the Higher Education Statistics Agency (July 2011).

We encourage you to prepare for life after Leeds from day one; that's one of the reasons Leeds graduates are highly sought after by employers. Our award-winning on-campus Careers Centre, one of the largest in the country, has close links with many graduate recruiters. Over 450 employers visit our campus to meet our students each year, including Teach First, Unilever and Ernst and Young. In fact, the High Fliers report, *The Graduate Market in 2013* puts us in the top 10 in the UK for graduate recruitment.

We understand exactly the kind of graduates employers are looking for: self-assured, flexible, independent critical-thinkers. Our academic programmes, combined with the wealth of opportunities outside of your course, will help you broaden your experience and develop the skills employers want – skills that will benefit their organisation. We will work with you to create a career plan and develop it every year to address 'career readiness', monitor your progress and direct effort to where you need it most.

We will help and encourage you to follow three steps throughout your time with us:

- Step one: **Decide** on your future career
- Step two: **Plan** the ways in which you can secure your future
- Step three: **Compete** for employment at the highest level.

93%

93% of our graduates are employed or studying within six months of leaving; the average is 69% according to the latest report from the Higher Education Statistics Agency (July 2011).

The Careers Centre is the place to get advice about what to do after university, find work experience, improve your CV and deal with job applications and selection processes. Our experienced, qualified advisors will help you make informed choices, and are available to provide advice even after you graduate. Our services include:

- a daily drop-in information, advice and guidance service
- vacancies specifically targeted at Leeds students, updated regularly
- accredited career development modules worth 10 or 20 credits
- internships and placements and optional accreditation for one-year placements
- the Erasmus work placement grant, potentially providing extra funding for work placements in Europe (see page 36)
- the Leeds Network, which enables current students to make contact with Leeds graduates in their chosen areas of work
- recruitment fairs where you can meet major graduate recruiters
- e-guidance for those who have graduated or cannot visit the Centre.

Regular graduate recruiters to our campus include:

- Abercrombie and Fitch
- Apple
- BAE Systems
- Deloitte
- Ernst & Young
- European Civil Service
- Fujitsu
- Hallmark Cards Plc
- HSBC Group
- IBM UK Ltd
- Jaguar Land Rover
- John Lewis
- KPMG
- Lloyds TSB
- M&S
- Network Rail
- Next Retail
- Procter & Gamble
- PwC
- Rolls-Royce
- Sainsbury's
- Teach First
- The Co-operative Group
- Transport for London
- Unilever
- Waitrose

<http://careerweb.leeds.ac.uk>

Daniel Sanders
4th year BSc Aviation Technology and Management
Daniel is pictured in the flight simulator in the Faculty of Engineering, July 2012.

"When I came to open day, I got a really good feeling about the University. The lecturers I met were very knowledgeable and their passion for the subject really came across.

As part of my degree, I undertook a year-long project management internship at Rolls-Royce in Bristol. I worked for a variety of customers around the world; probably the most notable was the Red Arrows!

The Careers Centre played a big part in me getting the placement; they helped sharpen up my CV and we did a mock interview which was great preparation for the real thing. I would definitely advise other students to make full use of the Careers Centre while they are here.

Having had a year to see me in action, I'm pleased to say that Rolls-Royce have offered me a full-time position on their graduate scheme when I finish Uni. I'm looking forward to starting back with them and putting my degree to good use!"



Student enterprise and entrepreneurship

One of the things we're most proud of is the opportunity we give every student to get involved in real-world enterprise experience and activities. So whether you want to develop the enterprise skills employers are looking for, or are thinking about setting up your own business after graduation, we can help.

The Leeds Enterprise Centre

We will help you turn your ideas into opportunities. You can study enterprise at the Centre and choose from more than 12 different elective modules which are designed to enhance your transferable skills. You will develop your teamworking, adaptability, communication skills, leadership and networking; the kind of skills that employers will be looking for and which will serve you well if you decide to start your own business.

<http://lec.leeds.ac.uk>

Spark – business start-up support

Self-employment is a career choice just like any other. We have helped many of our graduates successfully set up businesses, and research indicates that a third of students plan to start their own business at some stage. The Spark initiative, our innovative business start-up support, is available at the Careers Centre. A team of specialists will ensure you get the most up-to-date information, and, crucially, dedicated support throughout the entrepreneurial journey – from start-up to growth and beyond.

Spark offers you:

- advice and assistance with developing ideas and business plans to help get you started
- free and confidential help with finance and marketing
- an annual business plan competition with prizes up to £2,000
- 'proof of concept' so you can test your idea before starting to trade
- workshops on the fundamentals of starting a business, with speakers on subjects from intellectual property and market research to social enterprise and website creation
- yearly three-day 'Entrepreneurs' Boot Camp' – including sessions on business planning, finance, legal issues, sales and PR
- enterprise scholarships of £3,000 plus a package of business support provided by influential and successful Leeds alumni
- business advisors and expert mentors always on hand to provide all kinds of help and advice.

<http://careerweb.leeds.ac.uk/go/spark>

If you are a budding entrepreneur, there are several groups and societies you can join when you get here which will help you on your journey to becoming the next Alan Sugar – look out for the Student Enterprise Society, Enactus – a community of students, academics and business leaders, and Bright Futures – a uniquely careers-focused national student society.

Hannah Gillicker 3rd year BA Management

Hannah is pictured outside the famous Leeds music venue, The Cockpit, December 2012.

"Ever since I can remember I've known that I want to work in the music industry. My Management degree has taught me a lot about running a business, but I also know that I need to use my own initiative and get out there and start managing bands myself.

The Year in Enterprise is perfect for me because I've been able to set up my own record label, Break the Boundary Records, with the full support of the Leeds Enterprise Centre (LEC) and Spark. I had to go through an interview process and draw up a business plan to be accepted onto the enterprise year and, although it was pressurised at the time, the rewards have been well worth the effort. I work in the LEC on campus every day and treat my business as I would a real 9-5, except I usually work longer hours than that!

The LEC and Spark offer so much support, putting me in touch with lawyers and accountants, and they've been great at helping me network. I applied for and was accepted to become an Enterprise Scholar which means that I have financial support, as well as £1,000 worth of training which includes a business bootcamp."

Join a global network of Leeds graduates

What connects the band Alt-J to a NASA astronaut, or the Director-General of the International Red Cross to the cartoonist for *The Guardian*? All of them studied at the University of Leeds. Our alumni can be found in all professions across the world – Nobel laureates and newspaper editors; politicians and policymakers; entertainers and entrepreneurs; High Court judges, scientists, faith leaders, and even an astronaut. Eminent Leeds alumni include:

Colin Needham (Computer Science) Founder and CEO of IMDb (The Internet Movie Database)

Craig Jordan (PhD, DSc Pharmacology) Chief developer of breast cancer drug tamoxifen

Baroness Usha Prashar (Political Studies) Chairman of Judicial Appointments Commission

Tom Fleming (English) bassist and co-singer, Wild Beasts

Jane Featherstone (German and History) Managing Director of Kudos Film and TV, and Executive Producer of *Spooks*

Bekele Geleta (MA Transport Economics) Director-General of the International Federation of Red Cross and Red Crescent Societies

Martin Green (MA Theatre Studies) Head of Ceremonies, Olympics, London 2012

Lisa Woodman (Geography and Politics) publisher, *The Big Issue*

Mark Knopfler musician and founding member of Dire Straits

Corinne Bailey Rae (English) Grammy award-winning singer/songwriter

Piers Sellers, OBE (PhD Biometeorology) NASA astronaut

Tim Smith (Microbiology and Zoology) Chief Executive of the Food Standards Agency

Alistair Brownlee, MBE (Sports Science and Physiology) Olympic gold medallist – triathlon

Jonathan Brownlee (History) Olympic bronze medallist and 2012 ITU World Champion – triathlon

Claire Cashmore (Linguistics) Paralympic silver and bronze medallist – swimming

Karen Darke (Chemistry and Geological Science) Paralympic silver medallist – hand cycling

Jacqui Oatley (German) *Match of the Day* commentator

Keir Starmer (Law) Director of Public Prosecutions

Wole Soyinka (English) Nobel Prize-winning playwright

Steve Bell and Kipper Williams (both Fine Art) cartoonists

Andrew Shovlin (Mechanical Engineering) Senior Race Engineer for Mercedes GP Petronas F1 team

Liz Kershaw (Textiles) BBC 6 Music presenter

Haydn Parry (International History and Politics) CEO of Oxitec and Chairman of the Help for Heroes charity

Gwil Sainsbury (Fine Art), Joe Newman (Fine Art), Gus Unger-Hamilton (English) and Thom Green (Fine Art) Members of the band, Alt-J

As a Leeds graduate you will join these well-known names in a global network of more than 180,000 people in 168 countries across the world who have a lifelong connection to the University of Leeds and to each other. Choosing to study at the University of Leeds is just the beginning of that relationship.

Imagine having the support of such a diverse group of successful and talented people all over the world. Many of them are keen to give something back to the place that gave them the opportunity to shine. How? Here are just a few examples:

- **Careers advice:** Get practical advice from the Leeds Network. Students and graduates can ask more experienced alumni all the questions they need to land that first job and to progress once they have it.
- **Scholarships:** More than 110 current Leeds students benefit from scholarships which are funded by Leeds alumni. They loved it here and want others to share in the University of Leeds experience.
- **Guest speakers:** During your time at Leeds, you will have the opportunity to meet and hear from graduates in a variety of careers. Some will offer an eagle's-eye view from high positions, while others will provide invaluable insights into the early years of a career.
- **Work placements:** A remarkable variety of placement opportunities result from our relationships with the students who came before you. Recent student placements range from The National Trust and John Lewis to Unilever and Goldman Sachs.
- **Financial support:** As well as funding scholarships at Leeds, donations from Leeds alumni support student volunteering projects, and have helped fund a range of initiatives that enhance the student experience, from sports coaching to library facilities.

After graduation, you will have access to a range of benefits and services for Leeds alumni, including lifelong careers advice and job information. On campus, Leeds alumni benefit from use of our libraries, access to Leeds University Union facilities and even a special membership rate at our sports centre, The Edge. You will always be welcome on campus.

If you choose to go straight on to postgraduate study, or return to Leeds to complete a Masters or PhD in the future, you may be eligible to receive a 10% bursary towards your postgraduate tuition fees. See our website for terms and conditions and eligibility criteria www.leeds.ac.uk/postgraduate

Away from Leeds, we organise and support alumni events across the world to help Leeds graduates meet up, and as a Leeds graduate you can make use of our online groups to connect with other alumni. You will have plenty of opportunities to network professionally and socially, to keep in touch with your University, to ensure that your Leeds memories remain strong, and to play a real part in the future of Leeds.

www.leeds.ac.uk/alumni

Piers Sellers, OBE
(PhD Biometeorology)
NASA astronaut



Nick Howard

Alumnus:
Theatre Acting (2002)
Managing Director –
Limehouse

Nick is pictured at the offices of his company, Limehouse. Limehouse is a full service communications agency which employs a team of 10. Clients include First Direct and Taylor's of Harrogate (makers of Yorkshire Tea).

"I'm from a family of teachers – but from a fairly early age I knew I wanted to do something a bit different. While I was at the University of Leeds, it was staff at the Careers Centre who got me interested in television. They helped me get bit parts in TV shows and I guess that's what helped me decide I wanted to go into video production. I started off as a runner on shows like Coronation Street and Peak Practice – then I got a job at a Yorkshire-based production company. I really enjoyed working as part of a team, and deciding to set up on my own felt like an extension of all the bits of my job I liked the most.

Limehouse started off as a straight film production agency and it was just me. As the company has grown, it has also evolved and now we work across a number of different industries, using the full range of communications channels such as radio, film, staff magazines and intranets.

I sit on the advisory board for the Leeds Enterprise Centre, and sometimes current students will get in touch to ask about different aspects of the business. We also have links with the School of Performance and Cultural Industries and accept students for work placements and internships. It's a good two-way experience because the students have a chance to work as part of the team and figure out where their skills fit in, and we get to engage with young people who offer a fresh perspective.

The advice I'd give to students interested in entrepreneurship is to use the University network and take advantage of the support offered by the Careers Centre and Spark. Work out what you can offer as an individual because your business starts with you. Look at how your skills, knowledge and experience might translate into a business idea and make sure you really believe in what you're doing. Also, be prepared to put the hours in. No two days at Limehouse are the same – but you can guarantee I start early and finish late!"

180,000

As a Leeds graduate you will join a global network of more than 180,000 people in 168 countries across the world who have a lifelong connection to the University of Leeds and to each other.



Student wellbeing and support

Exciting, exhilarating, nerve-racking, daunting. Coming to university can be many things. But however you feel about the next chapter in your life, it's reassuring to know that when you choose the University of Leeds, there's a network of specialist services centred on you and your wellbeing. We're here to help whenever you need us.

Help@Leeds

This is a joint project between the University and the students' union, designed to make it easy for you to find help when you need it. The Help@Leeds website has contact details of all the support services on campus and quick links to useful information that may answer your questions. If you get stuck, email help@leeds.ac.uk and we'll find the right person to help you. <http://help.leeds.ac.uk>

Student Advice Centre at Leeds University Union (LUU)

The LUU Student Advice Centre is a professional, friendly service providing help with any problems you may have concerning life as a student. Specialising in housing, money and academic concerns, all help is free and confidential and is independent of the University.

advice@luu.leeds.ac.uk
0113 380 1290

www.leedsuniversityunion.org.uk/helpandadvice

Student Counselling Centre (SCC)

We want you to achieve your academic and personal potential so the SCC is there if you need it, offering interventions designed to help manage a wide range of psychological difficulties and emotional problems, including depression and anxiety. We will help you cope with any problems you may have and also help you to develop skills and resources that you could use in the future if you need to.

As well as individual counselling, the Centre promotes emotional wellbeing by providing groups, workshops, mindfulness techniques and web-based self-help. We also offer a variety of activities throughout the year designed to enhance your coping skills during potentially stressful situations, such as revision and exam times.

www.leeds.ac.uk/studentcounselling

The Student Medical Practice

Leeds Student Medical Practice is an NHS practice specialising in all aspects of student health. As well as the usual GP services, students registered at the practice can access a wide range of specialist services including sports medicine, travel advice and immunisation, all contraceptive requirements, asthma and diabetes management.

www.leeds.ac.uk/lsmpr

Our Equality Service – for everyone on campus

The University of Leeds is committed to equality and diversity. We work hard to meet the needs of our diverse student population and provide a safe, supportive and welcoming environment for all.

Information on the University's approach to equality and diversity and associated guidelines, policies and procedures are available on the Equality Service website.

www.equality.leeds.ac.uk

For students with queries relating to other aspects of equality and diversity (eg age, gender, race, religion or belief, sexual orientation, pregnancy and maternity, and gender reassignment) advice is available in the first instance from the LUU Student Advice Centre.

www.leedsuniversityunion.org.uk/helpandadvice

Support for disabled students

As part of our commitment to equality and diversity, we aim to ensure that every student is treated fairly; part of this is our support for disabled students.

We have a good range of support for disabled students, including several Disability Coordinators who liaise with academic departments to arrange reasonable adjustments for students. A Support Worker Team provides one-to-one support through personal assistants and mentors, and our Student Mental Health Team provides mental health support. You may need to apply for additional funding for some support, but we can advise you on sources of funding (Student Finance England) and help you fill in forms. When you apply for this funding (called Disabled Students' Allowances), our Assessment Centre can assess your support needs. Recommendations can include assistive equipment (eg computers and software) as well as individual support workers. Types of support which require funding include:

- a full assessment of your support needs
- one-to-one strategy support
- transcription services
- sign language interpreting
- specialist mentor support
- note-takers
- personal assistant support.

We have drop-in and guidance appointments every day. You don't need to wait until you arrive in Leeds before you contact us. In fact, it is helpful if you contact us before you arrive so that we can start to arrange your support. Calls via RNID Typetalk are welcome.

Telephone: **0113 343 3927**
Textphone: **0113 343 2616**

disability@leeds.ac.uk
www.equality.leeds.ac.uk

Twitter: [@UoLDisability](https://twitter.com/UoLDisability)

Facebook: www.facebook.com/UoLDisabilityTeam

Childcare on campus

Bright Beginnings Childcare Centre offers staff and students campus-based childcare which is registered with Ofsted and complies with the EYFS (Early Years Foundation Stage) framework. We provide high-quality care and education for children aged between three months and four years (or to the age at which they go to school) and a 56-place play scheme for school-age children. If you would like an information pack or to book a place on one of our Bright Beginnings tours, please contact:

0113 343 1818

a.c.hynes@leeds.ac.uk

www.brightbeginningschildcare.co.uk

Chaplaincy

The University Chaplaincy offers spiritual and pastoral support to all students (of all faiths and none) throughout their time at Leeds. Whether you're struggling or seeking inspiration, we provide drop-in pastoral and spiritual care, space for meditation and reflection and opportunities for worship and spiritual development. We are based at the Emmanuel Centre, which also houses a chapel for quiet contemplation and a common room. There is a Jewish chaplaincy and an Islamic prayer room on campus. For details of our events and further information, please visit our website

www.leeds.ac.uk/chaplaincy

or telephone us on **0113 343 5071**

“ Since starting at the University of Leeds the chaplaincy service has been invaluable to me. There is always a warm welcome and I've made some wonderful friends who support me with advice and prayer. The chaplains are always there if you need to talk, and the building itself provides a peaceful place to go and reflect on the stresses of everyday life.

Rachael Raw, PhD Psychology

International students

A warm welcome awaits you at the University of Leeds. Each year over 5,000 students from outside the UK choose to study with us. Ours is a university world famous for its teaching and research, situated in the heart of a vibrant and affordable, multicultural city.

Arriving in Leeds

When you arrive in Leeds, our international welcome team runs a free 'meet and greet' service, meeting you at the airport, train or bus station to give you all the information you need to settle in during your first few days.

Before term starts in September you are invited to the International Welcome Week, which is a free programme of information sessions and social events. This will provide you with an excellent introduction to Leeds and is an important part of your successful study experience. It includes:

- campus and city tours
- workshops with advice on topics such as:
 - finding accommodation and opening a bank account
 - how to make Leeds your home
 - making your money go further
 - introducing British culture
 - essential study skills
 - finding out about useful services.

Support during your studies

Our International Student Office will provide you with information, advice and guidance on a wide range of issues, from coping with culture to UK study methods, or extending your visa.
www.internationalstudentsupport.leeds.ac.uk

The Leeds University Union (LUU) Student Advice Centre also offers advice on academic problems as well as housing, finance and legal matters.
www.leedsuniversityunion.org.uk/helpandadvice

Fees and scholarships

International student tuition fees for 2014 were not available at the time of printing, but as a general guide, annual fees for full-time international undergraduate students in 2013 were:

- International foundation year – £12,400
- Arts/Business/Social studies/Law/Education – £12,900-£14,000
- Science/Engineering/Studio-based Arts – £16,200
- Clinical Medicine (years 1 and 2), Dentistry (year 1) – £18,000
- Clinical Medicine/Dentistry (remaining years) – £29,750

There are exceptions and some programmes have special fees so you must always check the exact fee for your course.
www.leeds.ac.uk/internationalfees

Don't forget though, that as an international student, your budget must include these tuition fees plus living costs. There is help available towards costs through University scholarships; these are offered by a number of our departments. Ask the admissions tutor for your course whether a scholarship or fee bursary is available, or check the relevant school or department website regularly.

www.leeds.ac.uk/faculty

Working during your studies

We have a student employment service called Joblink that helps you find part-time work while you study.
www.leedsuniversityunion.org.uk/jobs

Most international students on courses of more than six months will be given a passport stamp or visa sticker that allows you to work part-time during the term (up to 20 hours a week) and full-time during the vacations.

International student societies

Students from all countries are represented in our international student societies. It's a great way to meet other international students, learn about new cultures and develop friendships. And with over 250 clubs and societies, including sports, arts and subject specific, there will be something to suit you.
www.leedsuniversityunion.org.uk/clubsandsocieties

Intercultural Ambassadors Programme

As part of our Leeds for Life initiative the Intercultural Ambassadors are a group of UK and international student volunteers who are trained to create and run exciting projects to help students get together and enjoy the benefits of being part of our multicultural global community.
www.globalcommunity.leeds.ac.uk

Your health

The Leeds Student Medical Practice, located next to the University campus, cares for the health needs of students. Most international students on courses of more than six months duration qualify for National Health Service (NHS) treatment. Visit the website to check your entitlements.
www.leeds.ac.uk/lsmpr

Study abroad and exchange students

If you are an international student wanting to spend a year or semester studying at Leeds please see
<http://studyabroad.leeds.ac.uk>

More information

For more information about all aspects of being an international student at Leeds, including details of representatives in your country who can help you make an application, visit our website.
www.leeds.ac.uk/international

Alternatively, contact the International Office.
 University of Leeds, Leeds LS2 9JT, UK
 Telephone: +44 (0) 113 343 4023
 Fax: +44 (0) 113 343 4056
internationaloffice@leeds.ac.uk

Jacqueline Zu Zhang 3rd year BA Management with Marketing

Jacqueline is pictured out and about on campus with her camera, October 2012

"I decided to come to the University of Leeds because in China it has a good reputation for marketing and I liked the fact that on my course you study a variety of modules. When I was applying, I used the University's website to search for information and if I had a question I could phone or email and someone would get back to me.

I live in University accommodation as I think it's a great way to make new friends. I'd also recommend that people join societies as you get to meet other students who share your interests. If you're not sure which society you want to join, the 'Give it a Go' sessions are a good way to try different things. I tried lots – for example photography, ballet and street dance.

The International Office has been really helpful and each week we have trips and socials, which has been really good for making friends."



Costs and finance

Alice Tweddell 2nd year BA Geography

Alice is pictured outside Lyddon Halls of Residence on campus, her home for her first year.

"I chose Leeds because I wanted to come to university in a big city and I liked the fact that Leeds is compact enough that you can easily travel around but it's still large enough that you don't feel that you have seen everything in one go. When I came to visit on an open day I really liked the campus and the fact it was so close to the city centre.

Living on campus is great as everything is on your doorstep – it's really handy. I am not very good with my money so being in catered accommodation has definitely been a benefit as everything is included – you even get a gym pass!

I love the gym; the classes are brilliant and so much fun, especially Zumba! I've also been doing a lot of swimming recently as the pool is really nice.

Coming to Leeds has just been an all round brilliant experience and I wouldn't change it!"

Choosing the right university is an important decision and an investment in your future. There is financial support and guidance available from both the University of Leeds, and the government for UK and EU students.

The following information will be updated on our website so please check regularly.

www.leeds.ac.uk/yourfinances

Costs to consider

There are two main costs to consider – tuition fees and your own living expenses.

At the time of printing, full details of the fees and support available for students starting in 2014 have not yet been finalised. We expect arrangements to be similar to 2013, so the figures we have provided below are based on 2013 fees. For the most up-to-date information please check our website.

www.leeds.ac.uk/yourfinances

Tuition fees

The tuition fees for full-time UK or EU undergraduate students coming to Leeds in September 2014 reflect the high quality of a University of Leeds education and will be £9,000 each year.* However, you will not have to pay this up front. As long as you haven't already studied a higher education course, you can apply for a loan from the government to cover the cost of your course. For more information on help with fees, please see 'Scholarships and bursaries' on page 56.

www.direct.gov.uk/studentfinance

A tuition fee loan is also available to part-time students on most programmes of study. For more details on part-time study see page 18.

It is very important that you keep up to date with changes to fees and details of the financial support available to you by checking our website regularly.

www.leeds.ac.uk/yourfinances

Living expenses

If you are a full-time student you can also get help with living costs in the form of loans. Depending on your household income, you could also qualify for a grant, which does not need to be repaid at all.

www.leeds.ac.uk/yourfinances

Leeds is a relatively low-cost city compared to many areas of the UK, but you still need to budget very carefully.

www.leedsuniversityunion.org.uk/helpandadvice

*There may be an inflationary increase to this fee, in line with government policy.

Consider the lifetime value of a degree

A degree is an excellent investment. The financial return on a degree has been calculated at around £160,000 although this varies according to both the institution attended and course taken. This is the gross additional earnings of a graduate, over someone with 2 A-levels, in today's money terms, for someone studying a representative undergraduate degree. This is a premium of 23.5% over someone with 2 A-levels.

Source: *Universities UK, The economic benefits of a degree*

Scholarships and bursaries

Student funding has been designed to ensure that you don't have to pay for your degree up front. There is plenty of help available in the form of loans and non-repayable grants from the University and the government.

At the time of printing, full details of the fees and support available for students starting in 2014 have not yet been finalised but we expect arrangements to be similar to 2013 and so the figures we have provided below are based on 2013. For the most up-to-date information please check our website.

www.leeds.ac.uk/yourfinances

Funding from us

On top of the government help (detailed below) we have put £16m into our student funding initiative. We anticipate that more students than ever before will benefit from University of Leeds funding, with one-in-three of our students expected to receive a financial award.

Full-time students from households with an income of £42,600 or less a year will be able to choose from:

- a tuition fee discount
- a discount on University-owned accommodation (halls of residence)
- a cash bursary to help towards the costs of University life.

None of these are repayable.

Students from the lowest income backgrounds will get a package of support worth up to £6,000 in their first year and £3,000 per year after that. Others will get support of up to £3,000 a year on a sliding scale depending on household income.

Conditions apply, and full details of all help available for 2014 entry will be published on the University website.

www.leeds.ac.uk/yourfinances

Even if you don't qualify for this University-funded support, you may be eligible for other sources of funding from us such as scholarships for undergraduates. We also offer sport scholarships to elite athletes (see page 27). Ask the admissions tutor for your course whether scholarships are available, or check our website regularly.

www.leeds.ac.uk/yourfinances

Funding from the government and how to apply

There is a range of support available from the government to help you with the cost of living and studying at university. This support is for full-time students from England studying for their first degree and not funded by the NHS.

Non-repayable living cost (maintenance) grant

- If your household income is up to £25,000 a year you can expect to qualify for the maximum annual living cost grant of £3,354.
- If your household income is between £25,001 and £42,600 you will get a grant of between £50 and £3,354.

You do not have to pay this money back.

Living cost (maintenance) loan

If you live away from home you could get up to a maximum of £5,500. This will be reduced if you receive some maintenance grant or if your household income is above £42,875 (based on 2013 figure). If you live at home your maximum loan entitlement will be £4,375. Check our website for the most up-to-date information.

www.leeds.ac.uk/finance

Tuition fee loan

This is designed to ensure that you don't need money to pay your fees before you go to university. As long as you haven't already studied a higher education course, you can apply for a loan from the government to cover the full cost of your course. If you choose to study medicine or dentistry, you will have the same tuition fee loan for the first four years. It is expected that fees for the fifth and subsequent years will be paid in full by the NHS and you won't have to repay this.

6%

Research indicates that graduates from Russell Group universities secure an average earnings premium of at least 6% over the rest of the UK sector, giving Russell Group graduates an earnings premium among the highest within the OECD (Organisation for Economic Co-operation and Development).

Source:

Russell Group's submission to the Browne review

Paying it back

Repayments on your combined tuition and living cost loans are modest and only begin the April after you graduate and once you are earning above £21,000 a year. And if you never earn over £21,000 you will never have to repay the loan. Regardless of the cost of your course, you will only repay 9% of income over £21,000. So, for example, if you are earning £22,000 a year you would pay back 9% of £1,000 which works out at about £90 per year or, put another way, less than £2 per week.

The repayment process for most people is simple as it is deducted automatically from your pay packet through the tax system. If your salary falls below £21,000 or if you stop earning, for example while bringing up a family, your repayments will also be automatically suspended during this time. If after 30 years you haven't managed to repay in full, any loan outstanding will be written off no matter how much you still owe.

For financial information about part-time study see page 18.

If you live in England prior to the start of your course, you will need to apply through Student Finance England, which is responsible for assessing funding available to you.

www.gov.uk/studentfinance

The government support package for students from elsewhere in the UK will differ.

If you live in Scotland

www.saas.gov.uk

If you live in Northern Ireland

www.studentfinancenir.co.uk

If you live in Wales

www.studentfinancewales.co.uk

Independent advice is available from Martin Lewis' website.

www.moneysavingexpert.com

Disabled students

If you are disabled, including if you have dyslexia, a mental health condition or other long-term medical condition, you may be able to apply for Disabled Students' Allowances (DSA) to your funding body, eg Student Finance England or NHS Student Bursaries. DSA is intended to meet the cost of any equipment and other support you require to access your academic studies. It is not means tested, it is not a loan and does not need to be paid back. You can probably still get DSA even if you don't get a loan, grant or bursary. To apply, you must fill out a form and submit this to the funding body with evidence of disability. They will ask you to undertake a Needs Assessment to identify what support you need. The University has a long-established, fully equipped Assessment Centre which is perfectly placed to do this for you. For more information on the DSA process and Needs Assessment visit

www.equality.leeds.ac.uk/for-students/leeds-assessment-centre-2

If you are disabled you are strongly advised to speak to the Disability Team at the University before you start your programme of study.

0113 343 3927

disability@leeds.ac.uk

Meal Deal

Choose from our £2.29 Meal Deal 'Essentials Sandwiches', sushi boxes, pasta pots or Urban Eat Pasties

Drink

Coca Cola, Diet Coke, Ubuntu Cola, Fanta, Sprite, Dr Pepper, Brecon Carreg Sparkling Water, Orange Juice or Apple Juice

Snack

Choose from all Walkers flavours 32.5g, Alpen cereal bar, banana, orange or apple

£2.29 Meal Deal



Konrad Malinowski
4th year BSc Economics

Konrad is pictured in Essentials supermarket in the Leeds University Union, October 2012.

"Whilst I was applying to come to university I was looking at different options for financing my degree; it was when I looked on the University website that I found out about the Leeds Bursary which I now receive.

Applying for the bursary was very simple. When I applied for my student loan I just ticked a box agreeing that my financial information could be passed to the University and they then contacted me. I don't get financial support from my family so the bursary has been really helpful – it's meant that I haven't had to worry about money!

I've never actually set myself formal budgets; I just try to have a good balance between having a social life and managing the financial responsibilities of rent, food and bills. I've found Leeds to be a really affordable city and I'm quite good with money so I haven't struggled financially."

Applying to study here

Ways to apply

Leeds is a diverse and socially mixed student community and we welcome applications from students without a tradition of university study in their family.

Our admissions policy aims to provide fair and equal access to a university education for everyone who has the potential to benefit from it.

www.leeds.ac.uk/admissionspolicy

As part of this commitment we have developed a range of activities to improve access and help widen participation in higher education. We are involved in projects and partnerships with schools and colleges to raise achievement and aspirations and provide positive role models.

For UK students we offer our alternative admissions scheme, Access to Leeds, which was recently used as an example of good practice of wider and fairer access to higher education in a government report on the future of universities (see page 61).

We also welcome applications from international and mature students, and those wishing to defer entry to a range of part-time degree, diploma and certificate programmes and the growing part-time undergraduate body.

If you are a mature student or wanting to study part-time you can book a guidance interview by contacting the Lifelong Learning Centre.

0113 343 3212

part-time@leeds.ac.uk

www.llc.leeds.ac.uk

How to apply

To apply to study here you follow the same application process as every other UK university, as all applications for full-time places in higher education are co-ordinated by the Universities and Colleges Admissions Service (UCAS).

For entry in 2014 you should apply online at UCAS from 1 September 2013. The first deadline for the submission of applications is 15 January 2014 with the exception of Medicine (A100) and Dentistry (A200) for which the closing date is 15 October 2013.

Late applications may be considered. Check with the appropriate admissions tutor before making a late application.

You can apply online.

www.ucas.com/students/apply

International students apply through the UCAS system in the same way as British students.

Selection procedure

Our admissions tutors give careful consideration to applications made before the closing date. Personal statements should demonstrate why you want to study your chosen subject. UCAS is responsible for acknowledging your application and letting you know the outcome. Our academic schools will make contact with you during the application process. Prior to receiving an offer, you may be invited to interview.

We strongly encourage you to visit us to find out more about what it's like to study at the University of Leeds. All successful applicants will be invited to an applicant visit day.

If, by the end of February, you have used all five choices but you are holding no offers, UCAS Extra gives you the opportunity to make a further application or applications. Universities declare courses for which they will accept Extra applications and UCAS post these on their website.

www.ucas.ac.uk

This scheme runs until early July. If, by early August, you still have not secured a place at a university or college, you will be given a final opportunity through the UCAS Clearing scheme. This scheme enables universities with vacant places to offer them to any suitable applicants interested in studying at the university.

If the University of Leeds has any vacancies, these will be listed on our website from mid-August. If you are interested in a particular course you are advised to contact the appropriate admissions tutor directly to enquire about possible vacancies.

University of Leeds entry requirements

For all courses applicants must have a minimum acceptable level of literacy (normally grade C or above in GCSE English or its equivalent) and numeracy (which varies from course to course).

We consider applicants with a wide range of UK, European and international qualifications for admission to our undergraduate programmes. The minimum entry requirement for admission to an undergraduate degree programme differs from course to course, so please check the course listings starting on page 80. These academic requirements are a guide and may change, so please check our website for the most up-to-date information.

We welcome the increased breadth offered in post-16 qualifications and applicants with other relevant level 3 qualifications such as Scottish Highers, Welsh Baccalaureate, International Baccalaureate, and access certificates. Admissions staff will, where appropriate, formulate offers on an equivalent basis with other level 3 qualifications. You are advised to contact the relevant admissions department for further details. Offers will be made using the information on the UCAS form, including performance at GCSE, personal statement, reference, predicted grades and year 12 AS results where certificated. Applicants not able to, or electing not to, certificate AS awards in year 12 will not be disadvantaged; however we strongly encourage all applicants to declare AS results where possible.

Many subjects exclude general studies and critical thinking from their offers. However, where general studies and critical thinking are excluded, they may be considered where applicants narrowly miss their offers when presented with good grades when they receive their results. Please contact the relevant department for further information about the specific entry requirements for your course.

Although we do not require applicants to take the Extended Project (EP), as a research-intensive University we appreciate that it provides the opportunity for applicants to develop important research and academic skills relevant to study at the University of Leeds. Candidates are encouraged to demonstrate learning from their project in their UCAS personal statement (and if invited, at interview), especially where it is relevant to the degree course being applied for.

Alternative admissions

Access to Leeds Scheme

The University of Leeds is committed to identifying the best possible applicants regardless of their personal circumstances or background. We understand that A-level grades alone cannot tell us everything about an applicant, their abilities or their individual circumstances. The Access to Leeds (A2L) scheme enables admissions tutors to gain a greater understanding of the context of an applicant's academic achievements.

Eligible applicants to the scheme will receive special consideration from admissions tutors. A2L applicants who receive an offer will also receive an A2L offer two grades below the standard offer.

To be eligible applicants must have the potential to succeed at Leeds and meet two or more of the following criteria:

- from a household with an annual income of £25,000 or below
- in the first generation of their immediate family to apply to higher education
- attend, or have attended, a school which achieved less than the national average of 5 A* to C passes (including English & Maths) at GCSE
- only option is to attend a local university
- studies disrupted by circumstances in their personal, social or domestic lives
- live in a geographical area with low levels of progression to higher education
- living or grew up in public care.

Please visit www.leeds.ac.uk/A2L for further details of the terms of the A2L offer, our eligibility criteria and how to apply to the scheme.

The University offers a range of scholarships, for some of which Access to Leeds students will receive additional consideration, for details visit www.leeds.ac.uk/yourfinances

Students wishing to defer entry

At the University of Leeds we welcome applications from students who do not come straight from school or college. This intention can be stated on your UCAS application.

International applicants

The University welcomes students with international qualifications. International students apply through the UCAS system in the same way as British students. You can apply online and we have a network of international representatives who can help you with your application.

www.ucas.ac.uk

www.leeds.ac.uk/international

Entry requirements

Entry requirements in this prospectus are expressed in terms of the British A-level system and the International Baccalaureate. However, admissions tutors at Leeds are familiar with international qualifications and welcome applications from students with equivalent qualifications. For advice on whether your qualifications are acceptable for entry please email the International Office internationaloffice@leeds.ac.uk

If you are not able to gain the equivalent of A-level qualifications in your own country you should consider applying to our International Foundation Year. This is a popular programme with an exceptional pass rate. It combines study of the English language with key academic subjects to allow you, after a year of preparatory studies, to enrol on one of a range of our undergraduate degrees. For more information see page 68.

<http://internationalfoundationyear.leeds.ac.uk>

English language requirements

All candidates whose first language is not English must gain an English language qualification. Many qualifications are acceptable. Typical examples include: GCSE or O-level grade C or better, TOEFL 87 overall (with no less than 20 in listening, 20 in reading, 22 in speaking and 21 in writing) or IELTS 6 (with at least 5.5 in each component of listening, reading, speaking and writing).

English language requirements are subject to changes and vary between courses, so please check the level necessary for your course. If you need extra English language tuition before you start your programme, you can enrol on one of our English language courses. Taught by members of the University's Language Centre, students can study from three to nine months.

www.leeds.ac.uk/languages

International applicants who require a visa to study in the UK will be asked to provide additional details including passport number in order to comply with UK student entry regulations. If you do not have a passport you are advised to apply for one as early as possible. This will avoid delays in processing your offer documents. Students are reminded that a visa for study in the UK is specific to a single named institution. This means you should only apply for your visa using the offer documents from the university at which you intend to study.

www.leeds.ac.uk/undergraduate

Open days and find out more

Every year we welcome thousands of students at open days and applicant visit days. Why not join them and get a real feel for what life at Leeds is like?

Visit us

One of the best ways to experience the University and find out more about the courses you are interested in is to visit us. University open days and applicant visit days give you an ideal opportunity to explore our campus and sample University life. You'll get to find out more about your course, meet the staff who will be teaching you and chat to some of our current students, who can answer any questions you may have. And because our campus is just a short walk from the city centre, you can visit the city too. Taking a stroll into Leeds gives you a real taste of what the city has to offer, from the five miles of shopping to the many restaurants and bars.

University open days

Visit our open days to get all the information you need – from subject-specific talks from the academics who will be teaching you, to information on student services including accommodation, finance and even UCAS top tips. You can also visit some of our halls of residence and take tours of our students' union, sports centre and libraries. Parents and carers are welcome to attend talks and tours too, or they can find peace and quiet or chat to students and staff who will be on hand around campus to answer any questions.

Campus tours

If you cannot attend the open days but would like to visit the University, we offer organised campus tours throughout the academic year. You will be guided by one of our current students and have an opportunity to ask questions about life at the University.

www.leeds.ac.uk/visitus

Independent visits

If you are unable to make a guided campus tour or you would rather explore the campus on your own, you can make an independent visit. You can visit at any time, but remember that University buildings are not normally open at weekends. If there is a particular academic department you'd like to see, you should contact the department directly beforehand to avoid disappointment.

www.leeds.ac.uk/visitus

Applicant visit days and interviews

If you apply to the University through UCAS you may be invited to an interview, or if you are made an offer, to an applicant visit day. If you have any queries about visiting please contact the department directly. Find the number you need at

www.leeds.ac.uk/contact

International students

The International Office at the University of Leeds regularly travels overseas to meet with prospective students and advise them about life as an international student in Leeds. To find out if we will be visiting your country in the near future, please check our website at www.leeds.ac.uk/visitstoyourcountry

Find out more

We hope you have a chance to join us on campus. For more information on where we are and how to find us, see page 77.

Our website www.leeds.ac.uk has much more information – on facilities, campus life, student and staff profiles and more about life in Leeds. You will also find up-to-date fees and finance information.

For a full list of our single and joint honours courses go to www.leeds.ac.uk/coursefinder

OPEN DAYS

www.leeds.ac.uk/opendays

Tuesday 18 June 2013

Friday 21 June 2013

Saturday 22 June 2013

Saturday 14 September 2013

Saturday 12 October 2013



@comingtoleeds



www.facebook.com/universityofleeds



www.youtube.com/universityofleeds

Joe Thomas

2nd year BA History

Joe is pictured working as a campus ambassador during one of our open days, October 2012.

"When I was thinking about coming to Leeds, it was the visit to campus that made the biggest difference for me. Coming to university is a complete unknown, so being able to talk to a student who was in your situation recently is ideal. Now I'm a campus ambassador welcoming students thinking of studying here.

I like the campus – it has a really nice feel to it. I'm always flitting, about between the libraries which are only two minutes apart. The areas like the Roger Stevens fountain and Chancellor's Court are lovely; it's almost like a park in some places.

Whenever I'm doing campus tours, I always point to my favourite place; the Brotherton Library. I like the look of it and the architecture; the main dome is really impressive."

Foundation courses

If you do not have the formal qualifications for immediate entry to a degree course, you can take a foundation course which will help you to prepare for a university degree.

BA Social Science (Extended degrees in social science)

UCAS code: L301

This extended (four-year) degree course is designed to provide an opportunity for candidates without formal entry qualifications to enter university. All applicants will be given the opportunity to demonstrate their potential to succeed at an informal interview. The first year (level 0) is a foundation year and provides students with the skills they require for successful study at undergraduate level. It combines a firm academic grounding in the social sciences with study skills and information technology. Students are taught in a supportive environment by experienced adult education tutors.

You will study three core streams during your first year:

Understanding Social Divisions in Contemporary Society

Key topic areas covered: childhood and youth, sexuality, race and ethnicity, disability, researching adulthood, gender and health.

Researching and Studying the Social Sciences

Key topic areas covered: introduction to and developing study skills, sociology of crime, the criminal justice system, young people and crime, researching crime, framing politics, political parties, the extreme right in Europe and Britain, human rights and the European Human Rights Act, and globalisation.

Understanding Social Welfare

Key topic areas covered: Conservatism, the Social-Democratic welfare state, Marxism, welfare and citizenship, liberalism, the welfare state today, feminism, poverty – definitions and measurement, children, young people and welfare.

Students who successfully complete the foundation year will be able to progress to a number of full- and part-time degree programmes including sociology and social policy, education, law, politics and social work.

www.sociology.leeds.ac.uk/undergraduates/ba-social-science

Applications can be made through UCAS and UCAS Xtra, quoting the course code (L301).

For further information contact:

Richard Tavernier
School of Sociology and Social Policy
0113 343 9109
r.t.tavernier@leeds.ac.uk

Suzanne Hallam
School of Sociology and Social Policy
0113 343 4455
s.i.hallam@leeds.ac.uk

The International Foundation Year

The University of Leeds International Foundation Year (IFY) forms the first year of a suite of integrated programmes intended for high-quality international students who have completed high school in their home countries but who don't yet have qualifications to enable them to go straight into a University of Leeds undergraduate degree programme.

The programmes have been offered for more than 20 years and are some of the most successful of their type in the UK. Each consists of two elements: a one-year IFY element followed by a three- or four-year undergraduate (UG) degree element. Those currently available are:

Arts

with Integrated International Foundation Year (4 years)

Business

with Integrated International Foundation Year (4 years)

Design

with Integrated International Foundation Year (4 years)

Engineering

with Integrated International Foundation Year (5 years)

Joint honours

with Integrated International Foundation Year (4 years)

Science

with Integrated International Foundation Year (4 years)

These programmes are not part of the UCAS system. To apply, you simply choose the UG element and apply for it directly, either online or by using a paper application form. Please see our website for full details. Details of the UG degrees that can be entered via these programmes, the entry requirements, the costs involved, the subjects you will study during the IFY element and what you have to do to progress to the UG element can also be found on our website.

<http://internationalfoundationyear.leeds.ac.uk>

You are also very welcome to contact us.

The International Foundation Year Office
12.14 Marjorie and Arnold Ziff Building
University of Leeds
Leeds LS2 9JT
England
Tel: +44 (0) 113 343 3209
Fax: +44 (0) 113 343 2264
intfyear@leeds.ac.uk

Lifelong Learning Centre foundation year courses
Foundation year courses in the Lifelong Learning Centre (LLC) are part of the University's commitment to being a diverse community that welcomes students from all backgrounds. They provide an intensive preparation for a wide range of degree programmes for those whose earlier opportunities for educational achievement have been limited. What we are looking for in applicants is less about prior qualifications and more about your capacity for hard work and dedication to realising your potential.

Priority is given to applicants who live permanently in the UK and meet at least two of the following criteria:

- your permanent address is in a neighbourhood with low progression to higher education
- you attended a school which achieved less than the national average of 5 A*-C passes at GCSE
- you grew up in public care
- the residual income of your household is less than £25,000
- you will be the first member of your immediate family (excluding older brothers or sisters or your own children) to achieve a degree
- your studies have been adversely affected by circumstances in your personal, social or domestic life.

Members of the LLC staff team are available to offer help with all aspects of your progress and you will have periodic individual meetings with your personal tutor to help you realise your goals. We also provide continuing support once students transfer from the LLC to other parts of the University.

There is a strong emphasis in our foundation courses on helping you to develop skills for success. Teaching is imaginative and supportive, making sure you are intellectually stretched and helped through any sticking points in your learning. Group sizes are small enough for you to engage actively and be well supported by your peers.

Methods of assessment reflect those that you will find later in your degree programme, ensuring that you are well prepared for your continuing study. You will become familiar with academic writing and with ways to handle formal examinations. We see assessment as a key way of enabling you to learn by doing and make sure that feedback from tutors supports this process.

Shortlisted applicants are normally invited to a selection day and/or interview to assess their commitment and potential.

BSc Business Studies with Foundation Year UCAS code: BFYO

The LLC delivers both the foundation and first year of the programme with students progressing to Leeds University Business School (LUBS) for the final two years of their degree. Depending on the choices you make, you may graduate with a degree in management, accounting and finance or human resource management. In your two years with the LLC, you will gain an understanding of key aspects of business studies and explore the practical implications of your learning through a work placement and business simulation. You can also choose specialist modules from LUBS or opt for electives in other disciplines to broaden your learning.

Entry criteria

GCSE grades A*-C English and maths or equivalent **and**
3 A-levels grade CDD (200 UCAS tariff points) or equivalent or
(for applicants with work and life experience who lack formal qualifications) entry through successful completion of the University of Leeds alternative entry scheme.

BA Arts and Humanities with Foundation Year UCAS Code: V901

This programme is a carefully designed preparation for progression to an arts or humanities degree at the University. You will have opportunity to develop your skills for academic success and will be introduced to some of the key concepts and approaches that are used in the arts and humanities. Core modules each take a topic or theme as the focus for exploration of current academic thinking and your development of a range of study techniques. Modules cover the Renaissance; modernity and post-modernity; communications; image, music and text; religion, politics and society.

You will also take a module in a subject of your choice from a relevant degree programme. This enables you to experience at first hand the programme and academic school to which you are planning to progress.

Entry criteria

GCSE grades A*-C English and maths or equivalent **and**
3 A-levels grade CDD (200 UCAS tariff points) or equivalent or
(for applicants with work and life experience who lack formal qualifications) entry through successful completion of the University of Leeds alternative entry scheme.

Foundation courses

BSc Interdisciplinary Science

UCAS code: CFG0

This intensive programme can lead to a wide range of degrees in science, engineering, computing and healthcare. You will have the opportunity to gain a firm grounding in three or four core disciplines from a choice of chemistry, biology, physics or mathematics and to follow some more specialist subjects such as mechanics or environmental chemistry.

Entry criteria

GCSE grades A*-C English, maths and science or equivalent **and**
3 A-levels grades CDD (200 UCAS tariff points) or equivalent or
(for applicants with work and life experience who lack formal qualifications) entry through successful completion of the University of Leeds alternative entry scheme.

Please note: Applicants interested in progressing to all healthcare degrees will need to have a minimum of 5 GCSEs grades A*-C (to include maths, English and science). Additionally, your interest in these degrees must be communicated on application.

BSc Earth and Environmental Sciences with Foundation Year

UCAS code: F75N

Study of environmental issues and the geology of the UK runs as a spine through the foundation year so that you develop an understanding of key concepts and apply knowledge from your other core modules in maths, physics and chemistry. Depending on where your academic strengths lie, you may progress to a range of environmental studies degrees, or to programmes in geology, geophysical sciences, meteorology or geography.

Entry criteria

GCSE grades A*-C English, maths and science or equivalent **and**
3 A-levels grades CDD (200 UCAS tariff points) or equivalent or
(for applicants with work and life experience who lack formal qualifications) entry through successful completion of the University of Leeds alternative entry scheme.

For more information about these courses please contact:

Lifelong Learning Centre
0113 3433212
lifelonglearning@leeds.ac.uk
www.llc.leeds.ac.uk



Roger Cope Foundation year Interdisciplinary Science 1st year BSc Food Studies and Nutrition

Roger is pictured during a practical lab session for his degree course, December 2012.

“When I left school I didn’t know what I wanted to do so I decided not to go into further education at that stage although I always knew that at some point I would. Last year, 10 years after leaving school, I completed the Interdisciplinary Science foundation course and now I’m studying for a degree in Food Studies and Nutrition.

The foundation course was really fun but also very intense as it was a steep learning curve. But my tutors have been amazing and the Lifelong Learning Centre provided so much help. Everyone has been really welcoming and supportive.

Completing the foundation course has meant that I’ve really hit the ground running with my degree. I’ve had a year to get used to the library, to practise referencing, and using University systems like the VLE – it’s definitely given me a head start.”

Joint honours

Combine two subjects in one degree

We offer one of the most varied selections of joint honours degrees in the country. These programmes allow you to specialise in two subject areas at University, giving you flexibility and the chance to explore your interests further. You can choose to pursue subjects familiar to you or explore new ones.

We have expertise in a wide range of subjects, which is why we can offer you such a broad range of joint honours degrees. Joint honours courses can lead to unique opportunities in research and postgraduate study, and enhance your employment prospects by giving you a broad knowledge and skills base.

The employment record of our graduates is excellent; they go into a wide range of careers including accountancy, banking, the civil service, the leisure industry, interpreting and management. Joint honours is also a good idea for students who might want to gain a PGCE as it can provide specialist knowledge in two subjects.

Studying joint honours doesn't mean twice the work; you'll study the same number of credits as a single honours student, but just take fewer optional modules in each of the subjects. All students should therefore have a more or less equal workload.

In practice, of course, you do have to learn the basic language and background of two subjects rather than one, but for most joint honours students, this is outweighed by the fact that they find it refreshing not to be spending all their time studying in just one area. When it comes to the final degree classification, joint honours students perform just as well as their friends taking single honours.

Like all our students, you will benefit from excellent teaching and academic support. Most joint honours students take the same classes and modules as single honours students, so the lectures, practicals, seminars and fieldwork are all undertaken with specialist academic staff. Joint honours students are particularly appreciated for the broader perspective they bring to seminars, discussions and group work.

Joint honours programmes vary in length, depending on the programme you choose. All programmes which include a modern foreign language are either four or five years in duration. Other programmes are normally three years, unless you choose to study abroad (see page 34) or take an industrial placement year (see page 36), which will make your course a four-year programme. You can find out how long your chosen course will be on the UCAS website or the University of Leeds Coursefinder. www.leeds.ac.uk/coursefinder

Dissertation

As a joint honours student you will benefit from having a wide choice of subjects for your dissertation or final-year project. It may even be an opportunity to formally combine two subject areas and demonstrate competencies in both. You could develop your knowledge in either or both of your subjects, and make the most of the wide range of supervisors and academic staff available. A dissertation is your chance to demonstrate research and transferable skills that employers value highly, or prepare you for further study.

Elective credits

Most joint honours courses offer you the flexibility to take elective modules, allowing you to choose several subject areas in your first year: your two named subjects and one or more elective topics. You may:

- choose to take elective subjects in areas which are new to you or which allow you to continue your interests from school
- plan your course so that the elective subject helps you develop useful skills such as IT or a new language.

Personal tutors

As with single honours students, you will have a personal tutor who is normally an academic in one of your primary teaching departments. Their role is to guide your module choices and offer support, as well as act as a point of contact for references and guidance. You will benefit from working with other staff who have many years experience in joint honours and the issues that are unique to students who decide to embark on a multidisciplinary degree.

Admissions and entry requirements

For full requirements, please refer to the University of Leeds Coursefinder or the UCAS website, as requirements change from time to time.

www.leeds.ac.uk/coursefinder
www.ucas.com

Personal statements should demonstrate why you want to study your chosen subjects, and explain how you think the combination of subjects will lead to your overall career aspirations.

All applicants who receive an offer will be invited to a joint honours visit day to find out more about their chosen degree and meet with staff and students.

The next few pages give you a flavour of the courses on offer, but for the most up-to-date information and more details of each combination visit www.leeds.ac.uk/coursefinder

Joint honours combinations – what can you study?

For a full list of all combinations see our website, or consider some of the popular combinations on the following pages.



ONE
DEGREE
TWO
SUBJECTS
ENDLESS
POSSIBILITIES

Joint honours

Two modern languages

If you have a particular aptitude for languages, a combination of two languages can be ideal. Unlike other universities, our courses allow you to spend two residences abroad in the countries of your chosen languages (typically a year in one and a term in the other, although there are some exceptions to this). This will ensure that you experience the full practical and cultural aspects of each language and will also help increase your graduate employment prospects.

If you combine two European languages, you can generally choose the country in which you will spend the year, which could consist of formal academic study, an approved work placement, or an English language assistantship in a school. The last two options provide you with the valuable work skills and direct local knowledge that prospective employers find so attractive.

If you are studying a non-European language from scratch, you will be required to spend a year at a university in an appropriate country (typically in the second year) rather than a work placement.

There are also a small number of five-year programmes. If you choose a combination of any two from Arabic, Chinese, Japanese and Russian, you will spend a full year in each country in years two and three in recognition of the challenging nature of such combinations.

Benefits

- The School of Modern Languages and Cultures was recently ranked in the top 50 in the world by the *QS World University Rankings* – meaning you have access to world-class facilities and teaching.
- Spend a year in one of the countries whose language you are studying, and a term in a country in which your other language is spoken.
- Develop an appreciation of the commonalities of different languages, and how cultural influences change and inform their development.
- An excellent foundation for teaching languages – providing a suitable background for PGCE study in two language specialisms.

A modern language with another subject

You can combine a language with courses in the humanities, business and maths/sciences. Whichever subject you choose, a year abroad is an integral part of your course. This could be a programme of study at a university, or work placement, for example as a language assistant in a school. If you are studying a non-European language, you will generally spend your second year at a university in an appropriate country. Whatever you choose, your adaptability, independence and intercultural awareness will improve immeasurably by being immersed in a different culture.

Combining a language with a humanities subject

Language and cultural awareness adds an extra dimension to studies in the humanities.

Combining a language with a business subject

Your language ability will be a key asset for those companies looking for overseas growth. You will also gain knowledge of overseas customs, cultural practices and working patterns.

Combining a language with a science/maths subject

Studying a language energises your maths/science degree as it develops your skills in communication, teamwork and effective presentations, which all enhance your career prospects.

Benefits

- The School of Modern Languages and Cultures is one of the largest and most diverse of its kind in the UK – here you can enjoy state-of-the-art facilities, and the expertise and dedication of internationally recognised scholars.
- Combine a language with a programme from across an exceptional range of subjects.
- Develop high-level skills such as communication, creativity, analysis, project management and effective research.
- Spend your third year abroad and enjoy a memorable experience, improve your adaptability, independence and intercultural awareness – all attributes highly valued by employers.



ONE
DEGREE
TWO
SUBJECTS
ENDLESS
POSSIBILITIES

Joint honours

English with another subject

You can choose to combine English with another arts and humanities, or modern languages, subject. From year one you can choose to specialise in either literature or in language, or take a combination of the two.

Across years two and three you can choose English modules which represent the range of literature and language taught in the School. Graduates with English as part of their studies go on to follow many different career paths: writing, theatre, law, publishing, newspaper and television journalism, administration, the civil service, management, advertising and marketing, management consultancy, HR and teaching, among others, and often go on to further study (eg a Master of Arts degree). English literature modules extend from medieval through to contemporary British, Irish, American and postcolonial literature. English language modules range from the historical development of the English language to contemporary varieties of written and spoken English.

Benefits

- The School of English has been judged 'excellent' in its teaching, and is among the top 10 English departments in the country for research (RAE 2008, GPA 2.95; RAE 2001, 5*A).
- Our School of English is one of the largest in the country, so you get to choose from an extensive range of modules.
- Develop a wide range of subject-specific and transferable skills, including the ability to analyse texts from a variety of sources, genres and historical periods, and the ability to communicate effectively in speech and writing.
- Spend your third year abroad and improve your adaptability, independence and intercultural competence, all attributes highly valued by employers. (If you choose a language, the year abroad is an integral part of your programme.)

Two social science subjects (humanities)

Social sciences encompass a huge range of subjects, from philosophy and politics, through to Asia Pacific studies and Latin. If you have a passion for understanding the world in which we live, and examining how you interact with the world around you, then we have the combination of subjects for you. Theories and debates which may be centred on one subject will automatically help you develop your thinking in the other.

Benefits

- The University has some of the largest social science departments in the UK, where the breadth of module choice will invigorate your studies.
- Our research and teaching expertise will help you explore issues affecting societies today; enabling you to learn how to change the world around you.
- Study abroad and work placement opportunities on our programmes enhance your personal development and employability upon graduation.

Economics or Management with another subject

Studying a joint honours degree with Economics or Management will give you a broad knowledge base which will make you more employable as you gain a wider range of transferable skills. Business is a truly global discipline providing skills and knowledge relevant across cultures and countries, so studying Economics or Management alongside a modern language could open up even more opportunities. If you have ever thought of working in another country or for a global company, take a look at the joint honours options with a language on our website.

Benefits

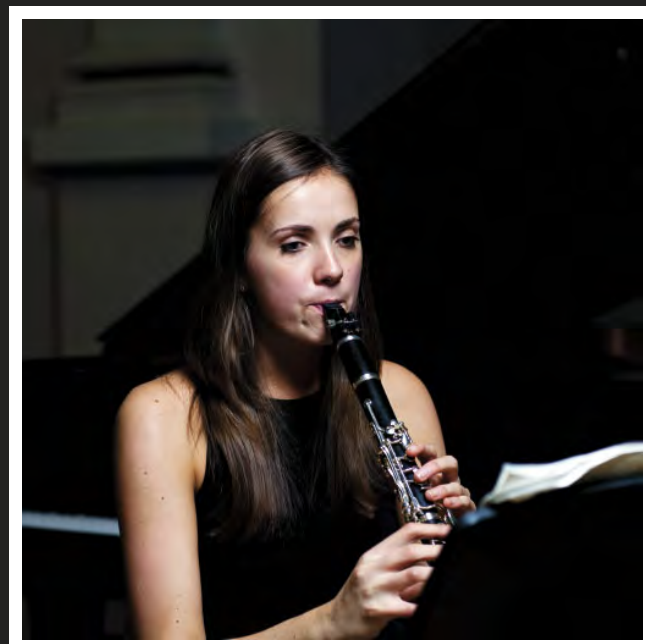
- The adaptability of Economics and Management means they can be combined with many different subjects.
- The opportunity of a work placement or study abroad year, giving you practical and personal skills and development alongside your academic degree, which will improve your employability.

Combinations including maths or science

Combining two science subjects or science and maths is an ideal way to develop your subject knowledge in more than one discipline and open up a wide range of career options. You can also study a science alongside another subject. Subject areas range from the applications of physics and principles of inorganic, organic and physical chemistry, to the structure, function, evolution, behaviour and ecology of animals and plants. You will be prepared for careers in the areas of health, ecology, conservation and sustainability, quantitative analysis, accountancy or finance, as well PGCE study at primary or secondary level for a career in teaching. There are a host of other opportunities in business and industry, including roles as a scientific or technical writer or marketing/business analyst.

Benefits

- There are opportunities for interdisciplinary study, based on the development of factual and conceptual knowledge, practical skills, problem-solving and computational skills.
- You will have the chance to undertake a substantial practical element, including laboratory work and team projects.
- The problem-solving skills gained through studying maths will help develop your approach to investigations in the scientific laboratories.
- Study in an environment in which you will achieve your full potential, including the opportunity to attend lectures given by leading industry experts.

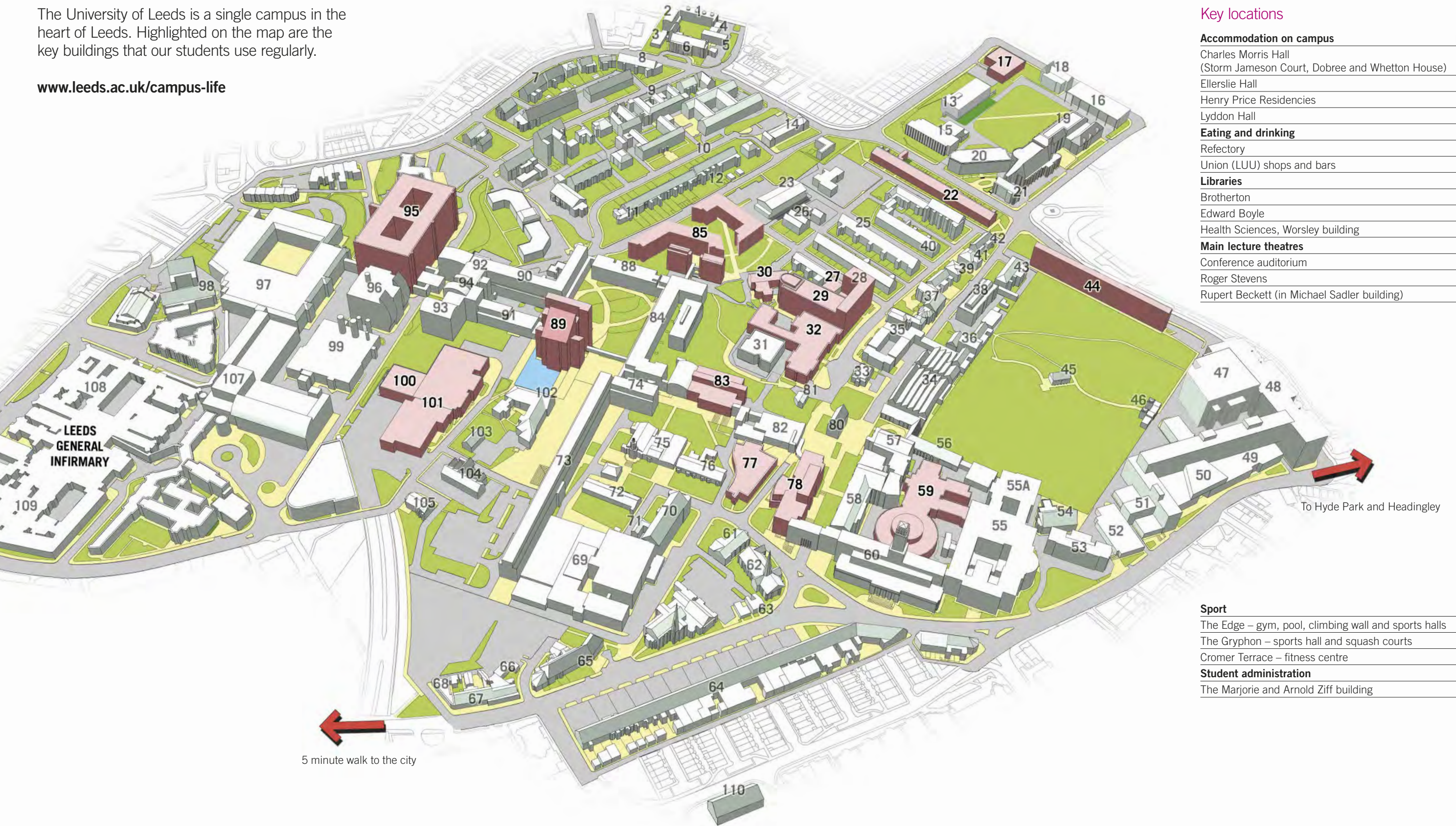


ONE
DEGREE
TWO
SUBJECTS
ENDLESS
POSSIBILITIES

Our campus

The University of Leeds is a single campus in the heart of Leeds. Highlighted on the map are the key buildings that our students use regularly.

www.leeds.ac.uk/campus-life



Key locations

Accommodation on campus	Map number
Charles Morris Hall (Storm Jameson Court, Dobree and Whetton House)	85
Ellerslie Hall	22
Henry Price Residencies	44
Lyddon Hall	30
Eating and drinking	
Refectory	29
Union (LUU) shops and bars	32
Libraries	
Brotherton	59
Edward Boyle	83
Health Sciences, Worsley building	95
Main lecture theatres	
Conference auditorium	100
Roger Stevens	89
Rupert Beckett (in Michael Sadler building)	78

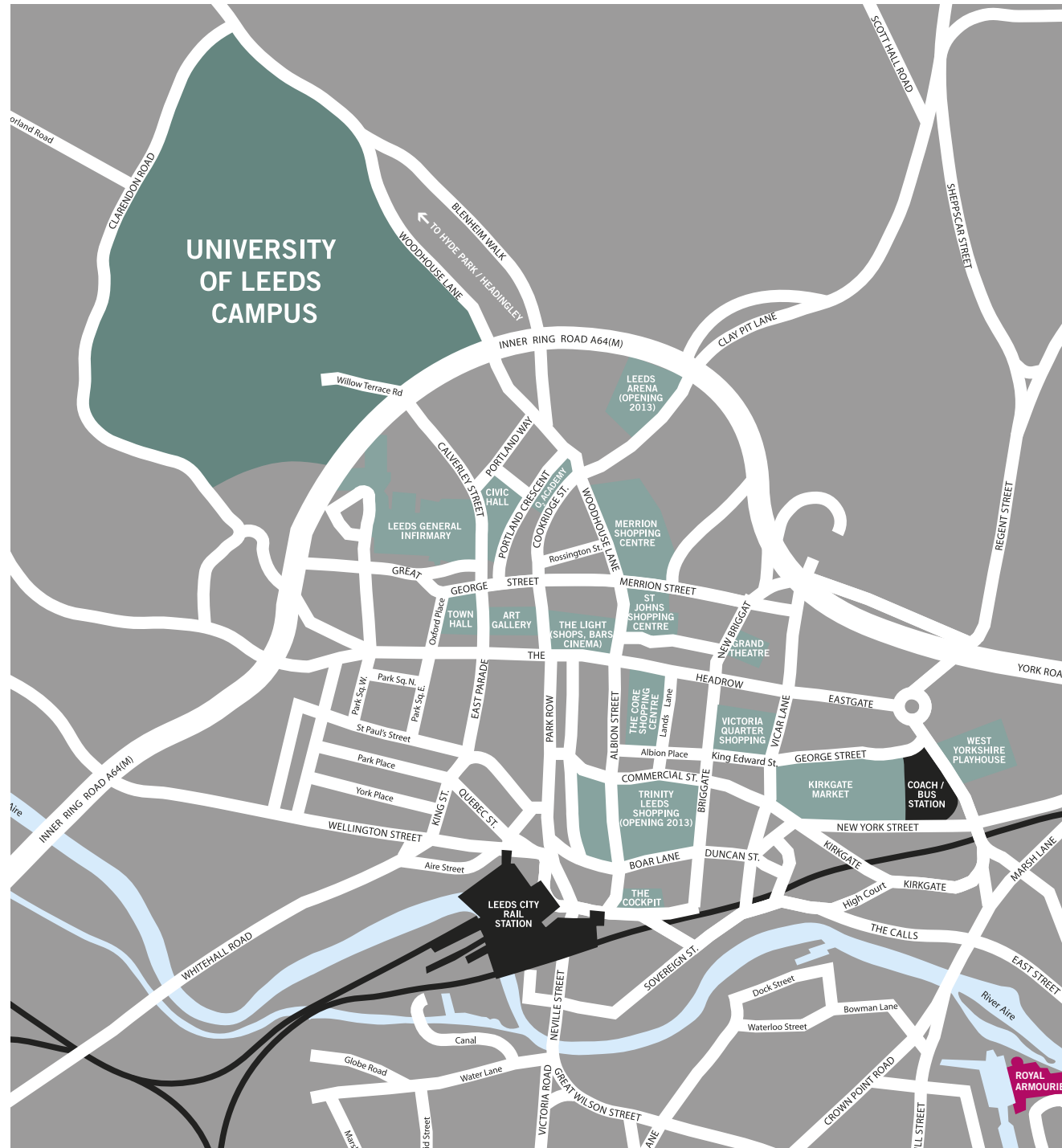
Sport	
The Edge – gym, pool, climbing wall and sports halls	101
The Gryphon – sports hall and squash courts	17
Cromer Terrace – fitness centre	27
Student administration	
The Marjorie and Arnold Ziff building	77

Leeds city centre map

The campus and the city

As you can see from the map below, our campus is a short, 10-minute walk from the city centre and all the attractions and amenities it has to offer, including theatres, bars, restaurants, bus and rail stations and more. www.leeds.ac.uk/citylife

Leeds city centre map



How to find us

How to get here

For full details on how to get here by train, bus, car and air please visit www.leeds.ac.uk and click on 'how to find us'.

City	Distance	Minimum travel time by train
York	24 miles	22mins
Manchester	42 miles	54mins
Newcastle	96 miles	1hr 27mins
Birmingham	118 miles	1hr 55mins
London	195 miles	2hrs 6mins (King's Cross)
Edinburgh	206 miles	3hrs



We've put this prospectus together for students looking to join us in 2014, and it was printed in spring 2013.

That means, to give you as much information as possible, the data in here was collected and written in January 2013.

It was checked and correct at the time of printing, but for the most up-to-date information please go to our website at www.leeds.ac.uk where you will find the latest admissions criteria, fees and finance information and more.

Produced by Communications, University of Leeds
Case study photography (except pages 35, 41 and 47)
by Mark Webster Photography
Printed by Linney Group

Alternative formats

If you require any of the information contained in this prospectus in an alternative format eg Braille, large print or audio, please email disability@leeds.ac.uk





UNIVERSITY OF LEEDS

Admissions Enquiries

University of Leeds

Leeds LS2 9JT

UK

T: +44 (0)113 343 2336

E: study@leeds.ac.uk

W: www.leeds.ac.uk/undergraduate