



**THINK
BEYOND**



UNIVERSITY OF LEEDS

Leeds city centre

First Direct Arena

The Edge

Laidlaw Library

Parkinson Building

Leeds University Union

St George's Field

Leeds train station**LEEDS CITY CENTRE**

Only a 10-minute walk from campus

FIRST DIRECT ARENA

Leeds' 13,500-capacity music venue

LEEDS TRAIN STATION**PARKINSON BUILDING**

The iconic landmark building of the University

LAIDLAW LIBRARY

Designed for our undergraduate students

THE EDGE

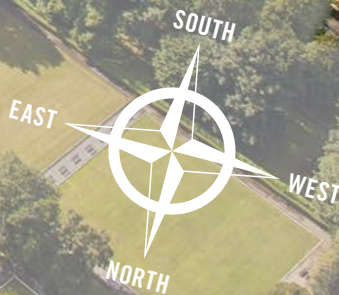
Swimming pool, fitness suite and sports halls

ST GEORGE'S FIELD

A beautiful space in the heart of campus

LEEDS UNIVERSITY UNION

Shops, music venues, bars and home to our clubs and societies



IMPORTANT INFORMATION

Information provided by the University, such as in presentations, University brochures and on the University website, is accurate at the time of first disclosure. However, courses, University services and content of publications remain subject to change. Changes may be necessary to comply with the requirements of accrediting bodies or to keep courses contemporary through updating practices or areas of study. Circumstances may arise outside the reasonable control of the University leading to required changes. Such circumstances include industrial action, unexpected student numbers, significant staff illness (where a course is reliant upon a person's expertise), unexpected lack of funding, severe weather, fire, civil disorder, political unrest, government restrictions and serious concern with regard to the transmission of serious illness making a course unsafe to deliver. After a student has taken up a place with the University, the University will look to give early notification of any changes and try to minimise their impact, offering suitable alternative arrangements or forms of compensation where it believes there is a fair case to do so. Offers of a place to study at the University will provide up-to-date information on courses. The latest key information on courses, entry requirements and fees can be found at courses.leeds.ac.uk. Please check this website before making any decisions.



CONTENTS

GO FURTHER, COME TO LEEDS	5	WE'RE HERE FOR YOU	49
Open days 2018	6	Support services	50
Welcome to Leeds	7	Support for international students	53
Your University adventure	8		
REDEFINING EXCELLENCE	11	CAMPUS LIFE	57
Creating knowledge that matters	12	A global community	58
Research-based learning	14	Students' union	59
Excellent learning and teaching	16	Sport and fitness	60
Discovery modules	18	A creative and cultural campus	62
Academic facilities	20	CITY LIFE	65
TAILOR YOUR EXPERIENCE	25	NEXT STEPS	71
Study abroad	27	Costs to consider	72
Work experience	29	Student funding	74
Student enterprise	30	Applying to study here	76
Volunteering	31	Alternative admissions	79
Clubs and societies	32	Visit us and find out more	81
PREPARING FOR YOUR FUTURE	35	FINDING THE RIGHT COURSE FOR YOU	83
Leeds for Life	36	Single honours courses	84
Career planning	37	Joint honours courses	84
A global network of Leeds graduates	38	Part-time study	85
		International Foundation Year options	85
YOUR HOME AWAY FROM HOME	43	Foundation years	85
Choosing your new home	44	Subjects and courses	
Come and have a look	45		
Our residences at a glance	46	MAPS AND HOW TO FIND US	86

*Top 100
university*

in the world for
academic reputation

QS World University
Rankings, 2018

GO FURTHER, COME TO LEEDS

When you choose to study here,
you'll join a welcoming community
of like-minded students and outstanding
academics who share your passion for
your subject.



Open days 2018

Friday 15 June

Saturday 16 June

Saturday 8 September

Saturday 6 October

www.leeds.ac.uk/opendays



WELCOME TO LEEDS

Be part of a prestigious, research-intensive Russell Group university, where you'll gain skills that will be invaluable to you, personally and professionally, for years to come.

You'll get the chance to take part in research, tailor your experience with discovery modules and take advantage of life-changing opportunities. You'll benefit from some of the best university facilities on offer and you'll be supported every step of the way. All on one campus, and in the heart of a thriving, friendly and multi-cultural city.

It's the whole experience you get at Leeds that makes us different.

Inside this prospectus you'll discover what student life here is like. You'll also learn what our graduates have achieved and what our current students say about studying here.

Find out more at www.leeds.ac.uk

COME AND SEE US

The best way to find out more is to come and visit us on one of our open days. You'll get to explore our campus and meet some of the staff who will be teaching you. You'll also be able to chat to current students and get a feel for the University and our city.

www.leeds.ac.uk/opendays

CONNECT WITH US



TALK TO US

+44 (0)113 343 2336

study@leeds.ac.uk

For the most current information on our courses, entry requirements, fees and student funding, visit courses.leeds.ac.uk

YOUR UNIVERSITY ADVENTURE



MAKE AN IMPACT

“Leeds is really innovative, offering loads of opportunities for undergraduates to get involved in research.”

Learn more from Emily on page 15.



DISCOVER MORE

“The discovery module option can really take you out of the course bubble you’re in and makes you aware of the wider opportunities around you.”

Find out more from Faidat on page 18.



CHANGE PERSPECTIVES

“I chose Leeds because of the range of study abroad options. I went to the University of Adelaide. It was a fantastic experience.”

Read about Ben's experience on page 27.



PUSH THE BOUNDARIES

“I worked as a Press Office Assistant at Kia Motors UK for my year in industry. The role was incredibly varied, from monitoring media activity to helping run new car launches in Italy.”

Find out more from Emily on page 29.

Don't take our word for it. Find out from our students how they've made the most of their time at Leeds.



TAILOR YOUR EXPERIENCE

“Taking a year out of my medical degree to run a successful business has been a pretty unbelievable experience.”

Read about Jenna's experience on page 30.



DO AND BE MORE

“University is all about learning and self-development, preparing you for the world beyond education. Leeds helped me do this.”

Learn more from Robert on page 40.



GET INVOLVED

“Clubs and societies are a great way to meet people outside your course or your accommodation. There are so many to choose from, you can try anything you want.”

Find out more from Louis on page 32.



KNOW NO BOUNDS

“The International Student Office organises events such as Global Café and Coffee Connections, making it really easy to meet people and make friends.”

Read about Kari's experience on page 54.

Top 10
UK university

The Times and The Sunday
Times Good University Guide, 2018

REDEFINING EXCELLENCE

Be inspired to be part of the next generation of highly skilled, independent critical thinkers – shaping the world around you in years to come.

CREATING KNOWLEDGE THAT MATTERS

What defines Leeds is our passion for discovery and our commitment to helping tackle worldwide problems.

Right now, our researchers are working together across different disciplines and collaborating with other organisations to find solutions to the world's most challenging issues in cities, climate, culture, energy, food, health and water.



Here are some of the ways we're changing the world...

TRACKING THE GIANT ANTARCTIC ICEBERG

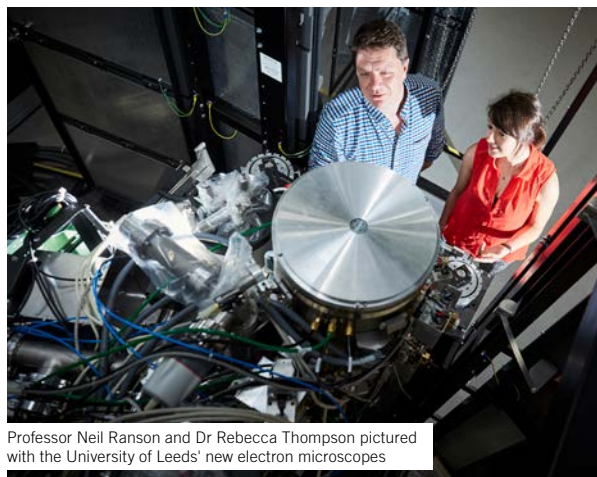
Antarctica's largest remaining ice shelf lost nearly 10% of its area when an iceberg four times the size of London broke free in July 2017. Our researchers have been working with the European Space Agency and the British Antarctic Survey to track the drifting iceberg – one of the biggest on record – using space satellite technology. Smaller icebergs have since formed from the giant iceberg and the remaining ice shelf – the largest is over eight miles long.

Following this dramatic natural phenomenon, the research team have been monitoring the activity on the ice shelf. If cracks continue to grow and more events like this happen in the future, the ice shelf could collapse, which would open the floodgates for land-based glaciers to flow more quickly into the sea, resulting in catastrophic rises in sea levels.

TACKLING ANTIBIOTIC RESISTANCE

Antibiotic resistance is one of the biggest threats to global health, as the antibiotics used to treat serious infections such as whooping cough and salmonella are becoming less effective.

Using powerful electron microscopes, our researchers have uncovered new information about a complex molecular machine called BAM, which helps bacteria to spread infectious diseases. BAM enables bacteria to build and maintain a defensive wall, protecting the bug from being attacked by antibiotics. This new insight will help the development of new drugs to target BAM and stop it from functioning, preventing the spread of disease-causing bacteria.



Professor Neil Ranson and Dr Rebecca Thompson pictured with the University of Leeds' new electron microscopes

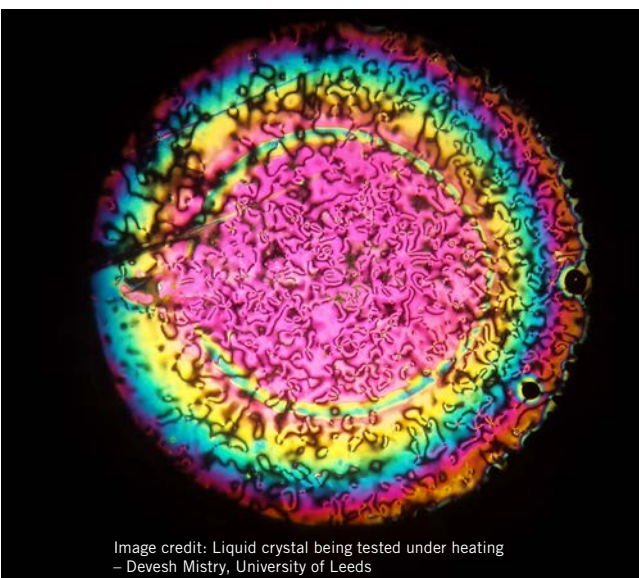


Image credit: Liquid crystal being tested under heating
– Devesh Mistry, University of Leeds

SUPPORTING CONFLICT SURVIVORS

The legacy of civil war, violence, even genocide, is one of the greatest barriers to development in post-conflict countries. *Changing the Story* is a four-year project led by our researchers to help young people whose lives have been affected by conflict in Colombia, Cambodia, Rwanda, Kosovo and South Africa.

Funded by the Arts and Humanities Research Council, the project is building a network of organisations to support local communities in achieving social justice. It aims to empower young people by getting them involved in creative media to understand conflict and share their experiences through local projects, such as inter-ethnic choirs in Kosovo and community filmmaking in Cambodia.

RESTORING VISION

Our new five-year partnership with leading global science and technology company Merck, and our other industrial links, will take optical innovations to the next level. Scientists will work together to develop new ways of using liquid crystals – commonly used in smartphone and TV screens – in high-tech applications such as smart contact lenses and virtual reality glasses.

We have a strong track record of research in liquid crystals. For example, our researchers have recently combined liquid crystals and graphene to create a pair of contact lenses that can switch between near and distant vision. We're also using liquid crystals to create an adjustable artificial eye lens, which could start to be implanted into eyes within the next decade, restoring age-related vision loss.



Image credit: Documentation Center of Cambodia Archives

RESEARCH-BASED LEARNING

Research happening on campus means you'll hear about new discoveries and breakthroughs as they happen – sometimes even before they've been published.

So, what does research-based learning mean in practice? It means research is at the heart of our teaching, so your course will be up to date with the latest developments, and designed and taught by staff who are experts in their field.

We'll also explore with you how research has influenced your subject and the research methods that are essential to making advances. You'll use these skills and methods in your own final-year research project, where you'll experience the excitement of immersing yourself in research and making your own contribution to the subject.

There are lots of opportunities for you to work alongside our academics and get involved in research happening on campus, so you'll experience first-hand how knowledge is created. In some subjects, research placements are available from the start of the course.

You could also develop your skills to become a future leader by applying for a Laidlaw Undergraduate Research and Leadership Scholarship, a prestigious international scheme. You'll receive leadership training and mentoring support while working on a live research project led by academic staff, or you could propose your own research project.



MAKE AN

IMPACT





“Leeds is really innovative, offering loads of opportunities for undergraduates to get involved in research. I won a Laidlaw Undergraduate Research and Leadership Scholarship, which allowed me to do a supervised degree-related research project. I sampled plant species from campus and the Himalayan Garden at Harewood House, and compared them to the fossil record to see how they’re affected by climate change.”

Emily Calvin

Pictured in the Himalayan Garden at Harewood House

 Learn more from Emily about her experience of research-based learning at www.leeds.ac.uk/emilycalvin



EXCELLENT LEARNING AND TEACHING

Teaching here is designed to help you develop your knowledge and skills and become an enquiring and independent critical thinker.

You'll learn how to define problems and how to go about finding answers – skills highly valued by graduate employers. You'll also engage with ethical issues in your subject area and gain an understanding of its global and cultural influences.

Our extensive research activity and the funding it brings mean we can invest in the very best facilities and attract staff involved in pioneering research. You'll study among inspirational academics – world experts who share your passion for your subject. Some may even have written textbooks and research articles you'll use on your course. They're committed to helping you learn and develop and, in time, become an expert in your own right.

Our staff have been awarded the highest number of National Teaching Fellowships in UK higher education, recognising their outstanding impact in the teaching profession. We're also proud to have achieved a Gold rating in the 2017 Teaching Excellence Framework (TEF), the highest award possible.





“The University has invested heavily in digital technology over the last five years, recognising that education is changing and students’ expectations are changing too. Digital technology can really support students’ learning and help them to achieve their outcomes, which is why we’ve spent money in a whole range of student education areas.”

Professor Neil Morris
Director of Digital Learning

 Hear more from Neil about the University's digital investment at www.leeds.ac.uk/neilmorris

You'll benefit from:

- support to help you adjust to studying at university
- a combination of lectures, seminars and tutorials, with time for independent study, project work, laboratory practicals or fieldwork
- the latest teaching technology in some lecture theatres, allowing you to access the Virtual Learning Environment, share group work, and contribute to discussions using desk microphones
- access to video and audio recordings of most of your lectures and other learning activities through our Virtual Learning Environment, meaning you can go back over your course content at any point in the year.

*We're a member
of the prestigious
Russell Group
of 24 research-intensive
universities*

90%

of our final-year students
rated their course as
intellectually stimulating
NSS, 2017



“The discovery module option can really take you out of the course bubble you’re in and makes you aware of the wider opportunities around you. It’s an option to be adventurous with, as you can do something completely unrelated to your course. My advice is to look at everything as you’d be surprised at the things you can do.”

Faidat Akinwale Braimoh



Find out more from Faidat about
our discovery modules at

www.leeds.ac.uk/faidatakinwolebraimoh



Faidat pictured in the Joseph Priestley Laboratory

DISCOVERY MODULES

As well as the compulsory and optional modules that make up your course, most of our degrees give you the opportunity to choose discovery modules. They’re a great way to tailor your study around your interests or career aspirations and help you stand out from the crowd when you graduate.

Our discovery modules are based around 10 Discovery Themes. In your first year, you could choose something related to your course or an existing interest, try something completely different, develop your transferable skills, or even learn a foreign language to prepare for a year studying or working abroad (see pages 27 and 29).

Explore the range of our discovery modules at
www.leeds.ac.uk/broadening



ACADEMIC FACILITIES

We're investing millions of pounds every year to make sure you have first-class academic facilities. From new laboratories and lecture theatres to one of the largest and most impressive libraries in the UK, you'll find everything you need for your studies right here.





LIBRARIES

The University Library is one of the major academic research libraries in the UK. Its print and online collections, gathered over 100 years, attract students and researchers from around the world. The Laidlaw Library, purpose-built for undergraduate students, has a variety of individual and group study spaces to suit the way you work.

You'll benefit from:

- four libraries on campus, open at various times, seven days a week (during term time)
- easy access to more than three million print items and thousands of online library resources
- dedicated library collections for your subject area
- different working environments, including group study areas and silent individual study spaces, as well as cafés for study breaks
- IT zones and study facilities with the latest technology, including bookable rooms for group work and interactive presentation equipment
- outstanding collections of rare books and manuscripts, which you can use for individual and group research as part of your course
- support for academic skills, including report and essay writing, delivering effective presentations and planning projects
- expert library staff on hand to help.

Find out more at library.leeds.ac.uk



COMPUTERS AND IT

You'll have access to the latest technology on campus. One login gives you access to all University IT services.

You'll benefit from:

- more than 1,800 networked PCs for you to use across campus – some available 24/7, so you can study when it suits you
- free high-speed wifi in most areas
- secure access to your resources, files and software from anywhere in the world with our Desktop Anywhere service
- a Microsoft Office 365 email account, so you've always got secure access to your email, calendar, contacts and tasks (you'll also be able to install up to five copies of Office Pro Plus for free)
- personalised content (like your timetable and library record) on your phone through the UniLeeds app
- experienced IT Service Desk staff available seven days a week to give you IT support by phone, email or in person.

Find out more at it.leeds.ac.uk



LANGUAGE LEARNING

If you want to learn a different language, our Language Zone has learning materials in more than 45 languages. It includes computer-assisted language learning, a dedicated space where you can study independently, an extensive collection of foreign language films and documentaries, and access to more than 50 TV channels in 20 languages.

If you're an international student, you can prepare for study in the UK with our pre-sessional English language courses, available before you start. And once you've started here, you can get academic English language development through part-time classes and workshops, which you can do alongside your degree.

You can practise conversation skills with native speakers through our Language Exchange and you'll also get free access to Rosetta Stone, the online language-learning software, with 24 languages to choose from.

www.leeds.ac.uk/languages



*4th in
the UK*
for student experience
Times Higher Education
Student Experience
Survey, 2017

TAILOR YOUR EXPERIENCE

Explore, grow and develop with an incredible range of opportunities, meaning you really can make your time with us unique.

 Learn more about Ben's experience of studying abroad in Australia at www.leeds.ac.uk/benbarrett



CHANGE

PERSPECTIVES

**From left to right:**

Ellena Sanderson and friends
pictured at Peyto Lake, Alberta,
Canada on a road trip



Lucy Yong pictured at Dead
Horse State Park, Utah during
her year abroad in America

STUDY ABROAD

A life-changing and confidence-boosting opportunity like no other. Studying abroad as part of your degree is a chance to experience another culture, make new friends and broaden your outlook on life. And it's amazing fun.

Most of our courses offer you the chance to study abroad as part of your degree. That's something not all universities can say. We have over 300 university partners in more than 40 countries worldwide. Popular destinations include Europe, the USA, Canada, Australia, New Zealand, Singapore, Hong Kong, Korea, South Africa and Latin America. You could extend your degree by another year and spend your third year abroad, or you could attend a subsidised summer school for up to eight weeks, usually after your first or second year, in Europe, Asia or Latin America.

You don't need to be fluent in another language to study abroad. You can go to an English-speaking country or our Language Centre will provide you with advice on language-learning opportunities before you go (see page 23).

www.leeds.ac.uk/studyabroad

“I chose Leeds because of the range of study abroad options. I went to the University of Adelaide. It was a fantastic experience. Most of my Leeds modules were around international development and politics, but in Adelaide there was a lot about China and Africa, which was interesting. The work culture was different too. It was a great chance to see how others do it. I travelled and worked and really gained my independence.”

Ben Barrett

Pictured at Whitehaven Beach,
Whitsunday Island, Australia

PUSH

**THE
BOUNDARIES**



📍 Hear more from Emily about her work experience at
Kia Motors UK at www.leeds.ac.uk/emilyjacklin

WORK EXPERIENCE

Develop commercial awareness, learn how to build professional relationships, gain the networking skills you'll need for life after university, and possibly even get a future job offer.

Most of our courses give you the opportunity to do a work placement. There are lots of ways you can do this – from a year in industry (a 12-month work placement that forms part of your course) to a summer internship, or shorter placements and project work that you can do as part of your studies. Placements can be in the UK or overseas and most are paid. Courses in medicine, dentistry and healthcare have clinical or professional placements already built in. You could also choose from a range of internship and ambassadorial opportunities available on campus. Whichever you choose, they will all give you valuable real-world experience, develop your skills, look great on your CV and boost your career prospects. It's also a great way to help you decide what kind of career you might like when you graduate.

Each year our students secure placements with huge global corporations such as Unilever, Goldman Sachs and Warner Bros, small-to-medium-sized enterprises such as Screenhouse Productions, and not-for-profit organisations such as Marie Curie.

Our partnerships also give you the opportunity to do exclusive paid work placements and summer internships at Unilever's site in Leeds (the biggest of its type in Europe), and gain insights into well-known brands such as Hallmark and Marks & Spencer. Dare, our pioneering collaboration with Opera North, has given opportunities in business and opera production to more than 10,000 of our students so far.

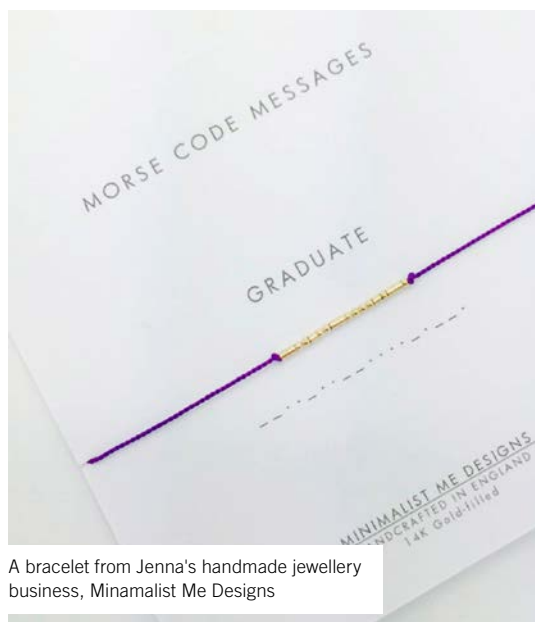
www.leeds.ac.uk/workexperience

“I didn't know I enjoyed public relations before my year in industry. I worked as a Press Office Assistant at Kia Motors UK. The role was incredibly varied, from monitoring media activity to helping run new car launches in Italy. The job was very different to my studies, but having the opportunity to spend a year trying something new was fantastic. My organisational and time management skills have all improved and my confidence has really grown.”

Emily Jacklin

Pictured at Kia Motors, Ringways, Leeds

STUDENT ENTERPRISE



A bracelet from Jenna's handmade jewellery business, Minimalist Me Designs

Whether you want to learn about enterprise or become an entrepreneur, you can get a head start at Leeds.

Our Centre for Enterprise and Entrepreneurship Studies runs enterprise-related discovery modules (see page 18). You'll develop transferable skills such as commercial awareness, creative problem-solving, teamworking, communication and leadership – skills much sought after by employers.

If you have an idea for starting your own business, our business start-up support team, Spark, can help you develop your idea into a viable business. You may even be eligible to base your start-up venture in our award-winning business incubator. You can get business advice, mentoring and access to funding, networking events and bespoke workshops to help you through your entrepreneurial journey. You could apply for an Enterprise Scholarship to help with business, training and transport costs, and win up to £2,000 to get you started in our annual business plan competition.

You'll also have the chance to take a year out to develop your business. Our innovative Year in Enterprise programme gives you a £5,000 bursary, plus access to academic tutoring, start-up advice, business mentors, and professional networks and serviced office space. And you'll find some great enterprise-focused student societies at Leeds University Union.

www.leeds.ac.uk/enterprise



“Taking a year out of my medical degree to run a successful business has been a pretty unbelievable experience. The support I've received has genuinely been second to none. Spark have offered massive help in terms of funding, providing a mentor for monthly meetings and opportunities to learn constantly, through retreats, boot camps or one-on-one meetings.”

Jenna Weets



Find out more from Jenna about how she started up her own business at

www.leeds.ac.uk/jennaweets




James pictured during a training exercise with the Leeds Medical Student Community First Responders



“After my first year, I set up the Leeds Medical Student Community First Responders, a volunteering initiative that trains medical students to respond to urgent emergencies in their local area. We work with Yorkshire Ambulance Service to train volunteers, who then go on call in pairs, responding to nearby emergencies using a GPS-enabled smartphone. Volunteering as a CFR gives students the chance to support the care of acutely ill patients in their local community.”

James Nicholson

 Learn more about James' experience of volunteering at

www.leeds.ac.uk/jamesnicholson

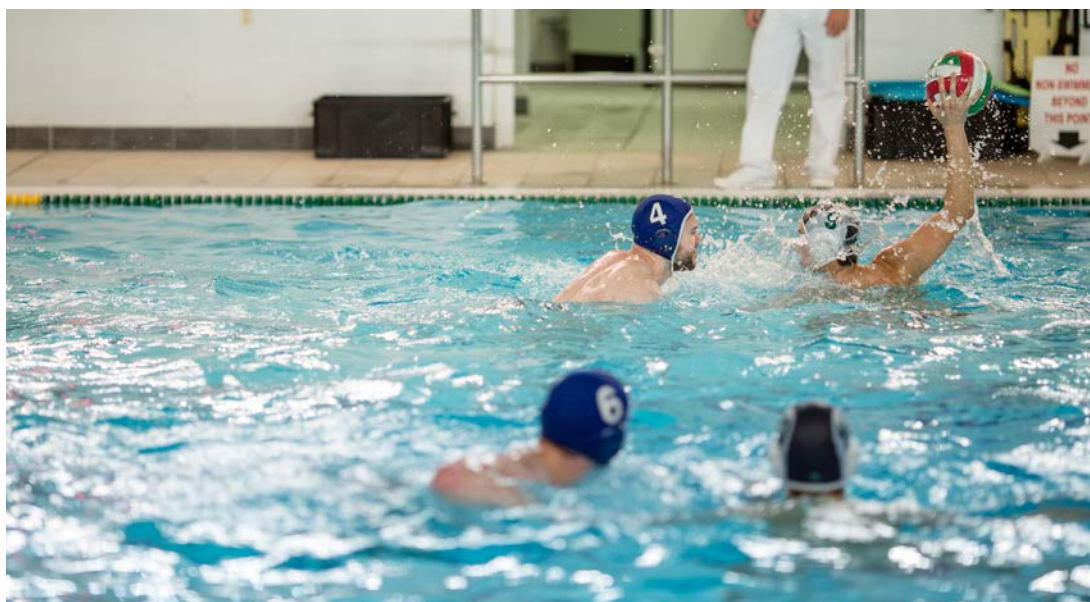
VOLUNTEERING

Become one of around 3,000 students at Leeds who make a difference to the lives of others each year. Volunteering is a great way to give something back to the local community, enhance your CV and broaden your life experience, as well as meet new people and have fun.

Whether you have a few hours to spare or more time to volunteer, there will be something you can get involved in. You could support young people in local schools through the Students into Schools scheme, become a sustainability volunteer for the Bike Hub, help young refugees or asylum seekers improve their English, get involved in a Leeds University Union volunteering society, or join a great local community project such as Hyde Park Source, an environmental charity. Leeds for Life grants are also available if you wanted to start your own project.

You could even get involved in one of our international volunteering projects, such as helping to run a summer school for children in rural Cambodia, adding another dimension to your University experience.


www.leeds.ac.uk/volunteering



“I signed up to the Swimming and Water Polo Society at the Freshers’ Fair in my first week. I’ve played games, gone to socials and met some of my closest friends through this. I also joined Leeds Student Radio to find out how I could further my DJ-ing opportunities.

Clubs and societies are a great way to meet people outside your course or your accommodation. There are so many to choose from, you can try anything you want.”

Louis Ewart

 Find out more from Louis about his involvement in Leeds University Union's clubs and societies at

www.leeds.ac.uk/louisewart

CLUBS AND SOCIETIES

Your students’ union, Leeds University Union, runs more than 300 student-led clubs and societies, bringing together like-minded students. They’re a great way to develop your skills such as team working and leadership.

You can get involved in lots of great activities and explore many interests. Football, caving, faith, theatre, gaming, dance, photography, skydiving, a cappella and even Quidditch are all on offer, and much more. Read more about Leeds University Union on page 59.

Most academic schools have their own society, which organises social events and talks from people in industry. It’s a great way to get to know people on your course and from other courses and year groups, as well as network with industry professionals.

www.luu.org.uk



*More than 300
clubs and societies
for you to join*



From top to bottom:

Leeds Student Radio / University of Leeds Boat Club
Salsa Society / Bhangra Dance Society / Archery Society

96%
of our undergraduates are
employed or studying within
six months of graduating
Higher Education Statistics
Agency, June 2017

PREPARING FOR YOUR FUTURE

Make the most of the opportunities at Leeds, have an amazing experience, and give yourself the skills and confidence to stand out from the crowd.



LEEDS FOR LIFE

You can start preparing for your future from day one of your course with our University-wide initiative, Leeds for Life, the first of its kind in higher education.

Leeds for Life brings together everything that's unique about you and your experience, so you can talk clearly and confidently to potential employers about what you've done and achieved. You'll have regular, structured meetings with a personal tutor, who'll help guide your academic and personal development. You'll also have access to the Leeds Network, a group of Leeds alumni who can provide real-life insights and contacts in professions or industries you're interested in.

Explore all the opportunities available to you and record and reflect on all your experiences at leedsforlife.leeds.ac.uk



CAREER PLANNING

More than 650 graduate recruiters, including Allen & Overy, Civil Service Fast Stream, HSBC, Jaguar Land Rover, Marks & Spencer, PwC and Teach First, target our students and visit campus year after year.

Your course and all the other experiences you'll get here mean you'll develop the skills that employers want. And because we help you start planning for your career as soon as you get here, you'll be ahead of the competition once you graduate.

Get help planning your career from our award-winning Careers Centre team, who will be on hand for help and advice even after you graduate. Our staff can help you find work experience, improve your CV, and offer advice on job applications, preparing for interviews and other options after graduation, including further study. They teach accredited career-related discovery modules (see page 18) and offer a daily drop-in service, one-to-one appointments and a jobs site featuring hundreds of vacancies targeted at our students.

Dedicated employability teams in your academic school can also give you support and advice specific to certain sectors.

careerweb.leeds.ac.uk

*Top 5
in the UK*

for graduate recruitment

The Graduate Market in 2017,
High Fliers Research



Be targeted by the top graduate recruiters, including:

ALLEN & OVERY



**Civil Service
Fast Stream**



M&S
EST. 1884



TeachFirst

A GLOBAL NETWORK OF LEEDS GRADUATES

What connects the band Bastille, a Paralympic medallist, the Chair of Unicef UK and a Turner Prize-winning artist? They all studied at the University of Leeds. Our graduates can be found in all professions throughout the world – Nobel laureates and newspaper editors, politicians and policymakers, entertainers and entrepreneurs, High Court judges and scientists, faith leaders and Olympians.

As a Leeds graduate, you'll join some well-known names in a global network of over 250,000 people in more than 180 countries – one of the biggest alumni communities of any UK university – who all share a lifelong connection to the University of Leeds and to each other.

Imagine having the support of such a diverse group of successful and talented people all over the world. Many of them want to give something back to the place that gave them the opportunity to succeed, and they do this by supporting our current students – from giving practical careers advice through the Leeds Network and funding student scholarships, to delivering talks and offering one-to-one mentoring and work placements.

Choosing to study here is just the beginning of our relationship with you. As a Leeds graduate, you'll always be welcome on campus and continue to benefit from a range of services – lifelong careers advice, access to our libraries and Leeds University Union facilities, plus a special membership rate at our indoor sports facility, The Edge. If you choose to go straight on to postgraduate study or return to Leeds to complete a Masters or PhD in the future, you may be eligible to receive a 10% bursary towards your postgraduate tuition fees.

STAY CONNECTED

Regular events across the world mean our graduates can meet up, and our online search tool can help you get in touch with old friends. You'll have plenty of opportunities to keep in contact with us through professional networks and social events long after you graduate.

Find out more at alumni.leeds.ac.uk

Alistair Brownlee,
MBE
Sports Science
and Physiology
**Olympic gold
medallist – triathlon**

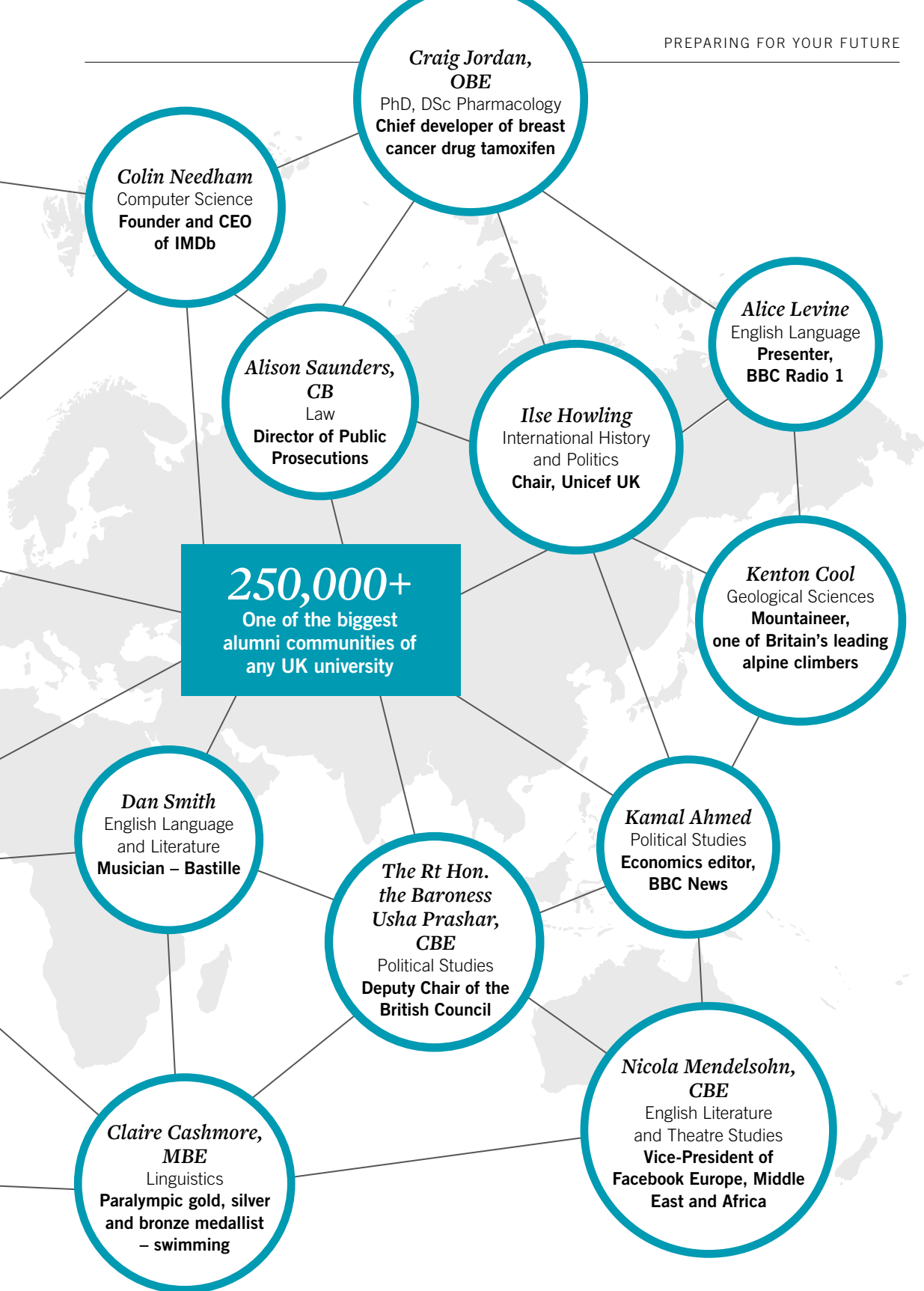
Hage Geingob
PhD Politics and
International Studies
**President
of Namibia**

Andrew Shovlin
Mechanical Engineering
**Chief Race Engineer at
Mercedes AMG Petronas
F1 team**

Jacqui Oatley,
MBE
German
**Sports presenter
and journalist**

Elizabeth Price
PhD Fine Art
**Turner Prize-winning
artist**

Wole Soyinka
English
**Nobel Prize-winning
playwright**



DO AND BE MORE



“University is about learning and self-development, preparing you for the world beyond education. Leeds helped me do this. We had great guest speakers, industry experts and alumni on campus to give us lectures, run workshops and talk to us about career progression. I had access to the Leeds Student Radio studios, allowing me to develop my craft, and my work placements let me build essential industry experience.”

Robert Bruce

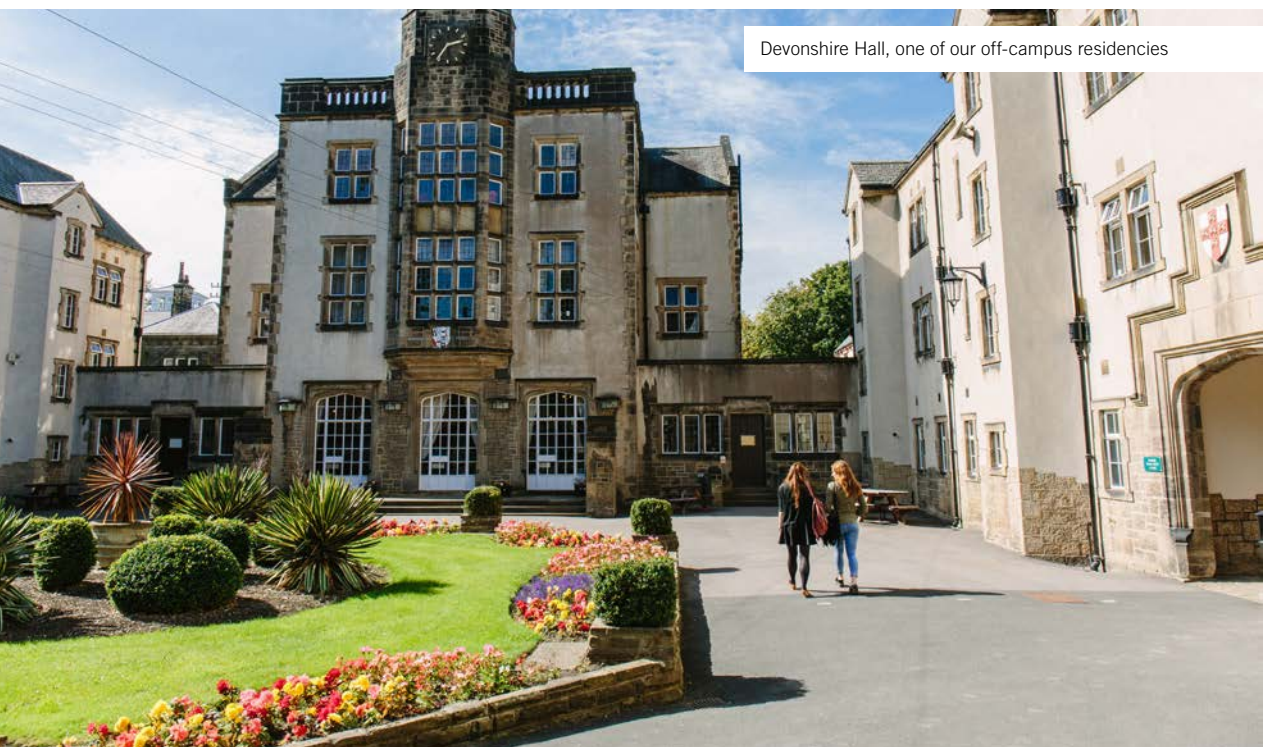
University of Leeds graduate, now working at Capital FM, Leicester Square, London



↑ Hear more from Robert about his University journey at www.leeds.ac.uk/robertbruce

YOUR HOME AWAY FROM HOME

Choosing a university is also about choosing a home away from home. You'll benefit from a wide range of support services to help you feel safe and at home from day one.



Devonshire Hall, one of our off-campus residencies

CHOOSING YOUR NEW HOME

Living in our University accommodation is a great introduction to student life, and a fantastic way to make new friends and feel part of our community. Most of our accommodation is off campus, close to the city centre or in the popular student areas of Headingley or Hyde Park – both are within walking distance or on frequent bus routes to the University.

Living with students who are on different courses means you'll make friends and broaden your social circle. You'll also have plenty of opportunities to get involved, as each residence has a student-led residents' committee that organises everything from film nights and day trips to end-of-term balls.

There are other benefits to living in our accommodation too:

- a range of residences to suit different budgets – from modern, purpose-built developments to more traditional buildings, catered or self-catered
- a large number of en suite rooms (or the chance to share a bathroom to keep costs down)
- no hidden extras to pay – utility bills, basic contents insurance cover, wifi and off-peak gym and sports membership are all included in your rent
- additional facilities at many sites, including common rooms with TVs, pool tables and communal study areas – some residences even have their own gym

- a safe environment, with our security service on call 24/7
- advice and support from experienced wardens and resident sub-wardens
- great customer service – we're a founding member of ANUK (Accreditation Network UK) and abide by its National Codes of Standards for student accommodation, fully approved by the National Union of Students (NUS)
- an efficient, responsive maintenance service.

We'll do our very best to give you your preferred accommodation. Around 70% of students get their preferred choice but, like other popular universities in the UK, we can't guarantee everyone their first choice.

Once your residence has been confirmed, you can join its official Facebook group and say hello to your future neighbours before you arrive.

ACCESSIBLE ACCOMMODATION

If you have a physical, hearing or visual impairment, we have adapted accommodation on and off campus. When you're starting to think about your accommodation, get in touch so we can help you find somewhere that best suits your needs.

COME AND HAVE A LOOK

You can take a look round our residences on our viewing day to help you decide which accommodation is right for you.

Viewing day is held each spring and all our undergraduate residences are open throughout the day for you to visit and explore. You'll get to see the facilities and talk to students and staff, who will be on hand to show you around and answer your questions.

You can also visit some of our residences on our University open days (see page 6).

www.leeds.ac.uk/opendays

Find out when the next viewing day is and get a feel for our residences at accommodation.leeds.ac.uk



OUR RESIDENCES AT A GLANCE

As a vibrant northern city, the cost of living in Leeds can be cheaper than in other cities, but how much you need to budget depends on lots of things, including the type of accommodation you choose. On or off campus, catered or self-catered, en suite or shared bathroom – there are many different options.

Figures for 2019 entry were not available at the time of printing, but the cost of University accommodation for 2018 entry ranges from £93 to £203 a week – don't forget that utility bills, basic contents insurance cover, wifi and off-peak gym and sports membership are all included in your rent.

Our guarantee


We guarantee* single University accommodation for your first year (and for all years for international undergraduates), as long as you apply by the deadline.

*Restrictions apply relating to deadlines, residence and academic offer status. Find out more about our guarantee at accommodation.leeds.ac.uk



“I lived in Devonshire Hall in my first year and absolutely adored it. The grounds are beautiful with lots of green spaces, as well as a gym and very sociable communal spaces. I met so many friends living there. It's very inclusive and sociable – it feels like a community and that's why I loved it. Whether you're into rugby or Quidditch, you'll make lots of friends.”

Marieke van de Braak

 Learn more about Marieke's experience of living in University accommodation at www.leeds.ac.uk/mariekevandebraak



Accommodation	Catered/ self-catered	En suite available	Number of beds	Contract length	Location
Price band A (under £112 per week)*					
Lupton Residences	Self-catered	No	640	42 weeks	Off campus
Montague Burton	Self-catered	No	456	42 weeks	Off campus
North Hill Court	Self-catered	No	76	42 weeks	Off campus
Oxley Residences	Self-catered	Yes	443	42 weeks	Off campus
Price band B (£112–£136 per week)*					
Devonshire Hall	Self-catered	Yes	345	42 weeks	Off campus
Henry Price Residences	Self-catered	Yes	355	42 weeks	On campus
James Baillie Park	Self-catered	Yes	563	42 weeks	Off campus
Leodis Residences	Self-catered	Yes	713	42 weeks	Off campus
Liberty Dock	Self-catered	Yes	488	42 weeks	Off campus
Sentinel Towers	Self-catered	Yes	243	42 weeks	Off campus
The Tannery	Self-catered	Yes	439	43 weeks	Off campus
Price band C (more than £136 per week)*					
Central Village	Self-catered	Yes	979	43 weeks	Off campus
Charles Morris Hall	Catered	Yes	625	39 weeks	On campus
CitySide	Self-catered	Yes	399	43 weeks	Off campus
Devonshire Hall	Catered	Yes	247	39 weeks	Off campus
Ellerslie Global Residence	Catered	Yes	97	39 weeks	On campus
Lyddon Hall	Catered	Yes	150	39 weeks	On campus

*Prices quoted are for 2018 and could change. Some large rooms will be outside these price bands.

WE'RE HERE FOR YOU

Exciting, exhilarating, nerve-racking, daunting – university can be many things. At Leeds you can be sure you'll have a network of support and wellbeing services dedicated to helping you.



SUPPORT SERVICES

From the moment you arrive through to your graduation, there are lots of resources and information to help and support you every step of the way. Our For Students website directs you to those support services, making it easier for you to get the right help when you need it. It also features quick links to useful information, like money advice, health concerns, disability support, and more.

Once you're on campus, our Student Services Centre can help and advise you on anything from accommodation and registration to fees and funding, and everything in between.

students.leeds.ac.uk

Student Advice, a professional, confidential service run by Leeds University Union, can help you with any problems you may face during your life as a student – no problem is too small or trivial. It specialises in housing, money and academic concerns, but the team can support you with anything and all their help is free and completely independent of the University.

www.luu.org.uk/student-advice

STUDENT COUNSELLING, WELLBEING AND MENTAL HEALTH SUPPORT

There may be times when stress, emotional difficulties or upsetting life events make it harder to cope academically or personally. At Leeds you can access free professional and confidential counselling, wellbeing and mental health support through groups, workshops, single-session consultations, brief counselling and web-based self-help resources. If you need longer term support or treatment, we'll help you identify the most appropriate local NHS or voluntary sector services.

You can also access free online peer and professional support, 24/7, with trained counsellors through Big White Wall. It's completely anonymous and provides a safe space to get things off your chest and help you feel more in control.

If you have an existing moderate to severe and enduring mental health diagnosis, our mental health advisors provide one-to-one support and will work with you to develop an appropriate support plan. They'll also act as an advocate between you and the University and liaise with external referral agencies.

students.leeds.ac.uk/supportandwellbeing



STUDENTS WITH SUPPORT NEEDS

If you have a disability, health problem or learning difficulty, you'll be offered a comprehensive range of support services. We'll work with your academic school and other University services to ensure that we meet your needs and put in place any reasonable adjustments.

Support can include drop-in advice and guidance sessions, modified examination arrangements, extended library loan facilities, transcription services and access to computers with assistive technology. You may need to apply for additional funding to pay for specialist academic-related support and equipment (see page 75). Our experienced staff can advise you on sources of funding and eligibility, and help you fill in any forms.

You don't need to wait until you start your course to contact us. Get in touch early, so we can discuss your needs and arrange the right support for you before you get here.

students.leeds.ac.uk/supportandwellbeing

LEEDS STUDENT MEDICAL PRACTICE

There's an NHS practice specialising in all aspects of student health that's close to campus. It has all the usual GP services, plus a wide range of specialist services, including sports medicine, travel advice and immunisation, contraception and sexual health services, plus asthma and diabetes management.

www.leedsstudentmedicalpractice.co.uk

MULTIFAITH CAMPUS

There are a number of spaces on campus for meditation, contemplation and worship. Our Chaplaincy is a place of welcome and friendship, offering support to you while you're here. You can join in with regular events or talk in confidence to one of our chaplains from a number of faith backgrounds.

students.leeds.ac.uk/prayerandcontemplation

CHILDCARE ON CAMPUS

If you need childcare, it's right here on campus. Rated 'Outstanding' by Ofsted, Bright Beginnings offers places for children between the ages of three months and five years (preschool). There's also a play scheme during school holidays for children aged between three and 11 years.

www.brightbeginningschildcare.co.uk

SUPPORT FOR MATURE AND PART-TIME STUDENTS

Coming to university as a mature or part-time student can be a very different experience from arriving directly from school or college, but we're here to help. A mature student is anyone aged 21 years or over on 1 September in the year they begin their studies.

Get dedicated support from our Lifelong Learning Centre, which provides specialised guidance and advice to mature and part-time students, from pre-application right through to graduation and beyond. Staff will also be on hand to help with any specific challenges such as balancing academic study with family and employment commitments.

Before you start, you can meet staff and other students, see the Library and other facilities, find your way around campus and prepare for the start of your studies. You'll also be invited to social events and drop-in meetings for mature and part-time students throughout the year.

www.leeds.ac.uk/lifelonglearningsupport



“I was a trained furniture maker for 26 years before I decided to pursue a career in care. The support I have received from the University and the Lifelong Learning Centre has been second to none. I would say to anyone who is thinking about returning to university, forget about whatever you think you can't do, you can do it, and the support is there.”

Gary Hinken



Hear more about Gary's experience of returning to education at

www.leeds.ac.uk/garyhinken

SUPPORT FOR INTERNATIONAL STUDENTS

You'll be part of a friendly and diverse global community here at Leeds. We're committed to helping everyone feel welcome. It's probably why we're one of the most popular destinations in the UK for international students. You'll mix with students from across the globe, be part of a truly international campus, and you may find other students from your home country too.

Leeds University Union has a range of international student societies. It's a great way to meet other international students, learn about new cultures and meet new people.

www.luu.org.uk

For more than 100 years we have welcomed international students from all over the world. This year will be no different. From the moment you accept our offer, you'll get help with travelling to Leeds, making sure you have the right visa, deciding what to bring with you, settling in and adapting to British culture. You'll also have plenty of opportunities to take part in social events, go on day trips or visit a host family for a weekend, so you can make the most of your time in the UK.

Staff regularly travel overseas to meet with prospective students and to give advice about life as an international student in Leeds. You can find out whether we'll be visiting your country in the near future at www.leeds.ac.uk/visityourcountry

For more information about all aspects of being an international student at Leeds, visit www.leeds.ac.uk/internationalstudents



ARRIVING IN LEEDS

When you arrive in Leeds, our Welcome team will give you all the information you need to help you settle in during your first few days. Our free Meet and Greet service runs in September and the team can meet you at Leeds Bradford Airport or Leeds train station to help you get to your accommodation.

Before teaching starts in September, you'll be invited to our International Welcome Week, a free programme of useful information sessions and social events. It includes an orientation programme, welcome talks, tours, day trips, café events, film nights and a taste of what our clubs and societies have to offer. It's an ideal way to introduce you to British culture and help you make new friends.

www.leeds.ac.uk/internationalarrival

Over 7,000 international students, including exchange students, from more than 150 countries



KNOW NO

BOUNDS

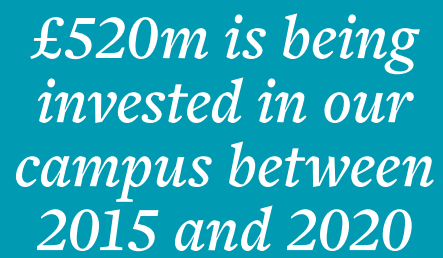
“I was scared and excited about studying in a different country, but the support provided by the University helped me settle in quickly. The International Student Office organises events such as Global Café and Coffee Connections, making it really easy to meet people and make friends. Leeds University Union has over 300 clubs and societies you can join and there are lots of volunteer programmes to get involved in.”

Kari Medalla

Pictured in Common Ground,
Leeds University Union



Learn more from Kari about living in the UK after moving from the Philippines at www.leeds.ac.uk/karimedalla



*£520m is being
invested in our
campus between
2015 and 2020*

CAMPUS LIFE

You can enjoy the best of both worlds here. Our single-site campus has everything you'd find in a small town and it's just a short walk away from the centre of our thriving, multicultural city too.



A GLOBAL COMMUNITY

Join our friendly and welcoming international community of over 34,000 students from more than 150 countries. It means you can make friends from across the world and become more globally minded – a great asset to future employers.

Our international outlook will also influence your studies. Whether that's through internationally-focused research projects or being taught by our academics and teaching staff from all over the world. You can also learn a new language, choose discovery modules with a global focus, or work or study abroad as part of your course.

Our weekly Global Café is a great place to relax with friends and meet people from all around the world. Celebrate the University's diversity during the annual World Unite Festival on campus, or become an Intercultural Ambassador and create exciting projects on campus and in the local area to bring people from different backgrounds together to share their cultures.

students.leeds.ac.uk/globalcommunity

STUDENTS' UNION

Join one of the best and most active students' unions in the country. Its mission is to make sure you love your time at Leeds.

Leeds University Union brings together our student community and is 100% student-led. It's a place where you can study, work, socialise, celebrate, relax, eat and drink. You can also get independent help, advice, support and representation. With more than 1,000 student reps, you can make sure your views are heard and influence real change in the Union, across the University and even in the city itself. You can join student campaigns and find a job through the Union's job shop, Joblink.

SPACES AND PLACES

The Union building is right in the middle of campus and has recently undergone a £20m transformation. You can buy most things there – from your everyday groceries, health food and University clothing to books, stationery and cards. There's even a farmers' market right outside the Union building every Monday during term time.

The Union has cafés, different places to get a bite to eat, bars and a trio of award-winning venues (Stylus, Pyramid and Function), as well as theatres for student performances, live entertainment, comedy nights and film screenings. Whether you want to meet up as a society, rehearse for a performance or organise your own event, the spaces in the Union building are completely flexible.

Its venues are also a destination for top bands and artists – Labrinth, Alt-J, Rizzle Kicks, Disclosure, Annie Mac, Ed Sheeran and Bastille are just a few of the most recent acts. Club nights have something for everyone, from Friday night cheese at student-favourite Fruity to dedicated hip-hop, indie and even power ballad nights.

The Refectory is where you'll find the main stage for big live events and festivals, including the Leeds Ball and Live at Leeds.



GET INVOLVED

The Union building is always buzzing with activity, and with more than 300 clubs and societies to choose from, you'll be spoilt for choice. Whatever you're into – or fancy trying – you'll find a club or society and some like-minded students. Everything is covered – from faith to hiking, film to snowboarding – and there are plenty of general interest societies too. The Give it a Go sessions are a great way to try a club or society, with no pressure to join for the year. If you and your friends want to take part in an activity which doesn't have a club, Leeds University Union will help you set one up.

Media societies like The Gryphon (the University's student newspaper), Leeds Student Radio and Leeds Student TV have all won national awards and acted as a springboard for many careers in the media. Polly Curtis (HuffPost UK), Jay Rayner (Observer) and Nicholas Witchell (BBC) all started out by getting involved in student media at Leeds.

Our students support communities and donate thousands of hours of volunteering. Leeds RAG, the Union's fundraising society, has raised more than £1m for local, national and international charities. You could be cycling to Berlin, organising a charity fashion show in Leeds or heading off to Uganda to support a school building project. Find out more about volunteering opportunities on page 31.

www.luu.org.uk

SPORT AND FITNESS

Whether you participate for fun, at club or elite level, you'll find everything you need at Leeds, from the UK's first purpose-built triathlon centre to one of the largest university fitness suites in the UK.

The Edge, our flagship £13.5m indoor facility features:

- 250-station state-of-the-art fitness suite complete with the latest Technogym equipment and Sky TV
- 25m, eight-lane swimming pool with movable floor
- sauna and steam room
- squash courts
- strength and conditioning room
- three studios offering more than 220 exercise classes per week during term time – covering everything from yoga to group cycle, as well as virtual classes available on demand
- personal training studio
- climbing wall.

Take a look around The Edge at sport.leeds.ac.uk/the-edge

Our outdoor facilities at Sports Park Weetwood, just three miles from campus, include:

- a total of 50 hectares – equivalent to 50 international size rugby pitches
- floodlit five-a-side football courts
- floodlit tennis courts
- two floodlit hockey pitches (water-based and tiger-turf)
- 3G floodlit rubber crumb synthetic pitch
- 32 grass pitches (for rugby, football, lacrosse, American football, ultimate frisbee)
- county standard cricket squares.

Our £5m sports facility at the University's Bodington playing fields, near Sports Park Weetwood, opened in April 2017. As well as grass pitches for sports, including football and rugby, The Brownlee Centre, named after our Olympic heroes Alistair and Jonny Brownlee, provides a new home for Leeds Triathlon Centre, as well as social spaces and changing facilities for all users. There's also a 1.6km outdoor cycling circuit for all abilities. If you're a disabled student and you want to improve your cycling performance, the facility is a British Cycling disability hub, so you'll receive all the support you need in a safe environment.

If you're looking for an adrenaline rush, we also have two dedicated outdoor centres in the Lake District and the Yorkshire Dales for adventure-packed trips like hiking, caving, mountain biking and climbing.

Find out more at sport.leeds.ac.uk





Get involved in sport

Whether you want to coach, volunteer, play socially or compete at the highest level, Leeds Sport has a range of opportunities to suit you.

Enjoy

Our social leagues are a great way to play competitively with friends against other student or staff teams each week. Or, if you don't want a weekly commitment but you enjoy meeting people and getting active, our weekly social sport sessions offer fun and non-competitive sessions in a few different sports – you just need to turn up.

You can try a new outdoor sport or activity, such as orienteering or kayaking, with our Get Out, Get Active programme. Female students can get inspired by our unique Uni Girls Can team.

Perform

You could join one of more than 60 sports clubs and become a Leeds Gryphon by representing the University of Leeds at one of several levels. Whether you're into triathlon or prefer aikido, there is a club for you. If you're an elite athlete, our Sport Scholarships programme will support you to achieve both sporting and academic excellence.

Lead

Sport isn't just about playing. You can develop new skills through our range of top-quality coaching courses and leadership programmes. You could also gain experience of working with children and young people through volunteering projects in Leeds or get involved with the Gryphons Abroad project in South Africa.

Find out more at sport.leeds.ac.uk/sport

A CREATIVE AND CULTURAL CAMPUS

Whether you want to get involved in performing or you'd rather sit back and enjoy, there's no shortage of things on offer. The University of Leeds is the perfect place to experience the arts without having to leave campus.

You could access outstanding creative facilities and cultural collections as part of your studies, such as the M&S Company Archive and our two galleries, which are all on campus.

Our Cultural Institute offers exciting opportunities to gain practical experience in a variety of cultural and creative organisations. You'll also be introduced to our pioneering research collaborations, which can provide inspiration for your own research and creative projects.



THE STANLEY & AUDREY BURTON GALLERY

Our free-entry Arts Council England-accredited museum displays stunning works from the University's art collection, dating from the 17th century to the present day. The Gallery hosts a series of innovative and contemporary art exhibitions, as well as a special exhibition held each year to show work by our recent graduates.



STAGE@LEEDS

We're lucky to have our own theatre complex, stage@leeds, which is licensed for the public and offers a range of performances from professional touring companies, as well as showcasing the talent of our students.



TREASURES OF THE BROTHERTON GALLERY

The Gallery displays treasures from the University's world-famous Special Collections. Highlights include a first edition of *The Hobbit* and original material written by the Brontës, along with medieval manuscripts and rare books from around the globe.



INTERNATIONAL CONCERT SERIES

This varied programme of free performances and recitals covers jazz, folk and traditional music, classical, contemporary and avant-garde, as well as popular music.



PUBLIC ART TRAIL

This trail guides you around the University's impressive collection of public artworks across campus, some of which have been designed and created by our own students.



M&S COMPANY ARCHIVE

Housed in the striking, purpose-built Michael Marks Building on campus, the living M&S Company Archive provides a fascinating insight into a national institution and a unique research resource for our students.

*Leeds named the 5th
best city in Europe
to visit in 2017
by Lonely Planet*

CITY LIFE

Leeds has one of the largest student communities in the country, making it an exciting place to live and learn. It also has lots of green space and nearby countryside to escape to.

📍 Explore all the great things to do in Leeds at www.visitleeds.co.uk



SHOPPING

- Leeds is famous for its historic shopping arcades, including the Victoria Quarter, Queen's Arcade and Thornton's Arcade.
- You'll find all your favourite designer and high-street brands under one roof in Trinity Leeds.
- The recent opening of Victoria Leeds (left) makes the city the third-largest shopping destination in the UK outside London.
- Leeds Corn Exchange (above), with its iconic domed roof, is home to many boutique-style shops and cafés.



MUSIC

- Leeds' nightlife is legendary, with clubs and bars offering music to suit all tastes.
- First Direct Arena (above) attracts some of the world's biggest artists to its 13,500-capacity theatre-style venue.
- O2 Academy Leeds is one of the city's historic venues for live music and comedy.
- Belgrave Music Hall and Canteen is an independent venue for live gigs, with a great rooftop terrace.



FOOD AND DRINK

- Leeds has a thriving independent food and drink scene, hosting the popular Leeds Indie Food festival each year.
- You'll find everything from quirky cafés and beer halls to rooftop bars with views of the city and Michelin star restaurants.
- Trinity Kitchen offers a vibrant mix of restaurants and street food vans under one roof.
- Leeds' historic Kirkgate Market (above), Europe's largest covered market, is a great choice for cheap, fresh groceries.



ARTS AND CULTURE

- Leeds is the only city outside London to have resident opera and ballet companies.
- You'll find several theatres, art galleries and museums, including The Grand Theatre, The Carriageworks, West Yorkshire Playhouse, Leeds City Museum (above) and Leeds Art Gallery.
- You can visit the Royal Armouries, the UK's national museum of arms and armour, with live jousting displays.



SPORT

- The famous Headingley Carnegie Stadium (above) is home to international Test matches and Yorkshire County Cricket Club, as well as Leeds Rhinos rugby league and Yorkshire Carnegie rugby union teams.
- Woodhouse Moor parkrun is one of several free events held at parks across Leeds.
- One of the country's biggest indoor real snow slopes is within easy reach, and the city has plenty of gyms and health clubs, including our very own fitness suite and swimming pool, The Edge (see page 60).



FURTHER AWAY, BUT WITHIN EASY REACH

- Leeds has amazing parks and spaces such as Roundhay Park, Temple Newsam, Harewood House and Kirkstall Abbey.
- You'll find traditional towns and cities nearby, like York, Ilkley, Harrogate, Saltaire and the village of Haworth – home of the Brontës.
- You can explore Yorkshire's stunning coastline, plus the Yorkshire Dales, the North York Moors, the Lake District and the Peak District.

Discover more at www.yorkshire.com

From top to bottom:

Harewood House, an 18th century stately house and gardens just north of Leeds

Staithes is a seaside village on Yorkshire's north east coast

Sutton Bank, part of the North York Moors National Park



EVENTS IN LEEDS NOT TO MISS

You'll find there's always something to do in Leeds, with the city hosting a full calendar of performances, events and festivals. Take a look at some of the things you can do in Leeds throughout the year.

- Leeds Valentines Fair, the UK's biggest mobile fun park, takes place just outside the city centre in February.
- The Northern Art Prize celebrates contemporary visual artists from the north. Shortlisted artists exhibit their work at Leeds Art Gallery in March.
- Live at Leeds, a metropolitan music festival, is held every year at venues across the city in April.
- Leeds Ball is a great way to round off your academic year. It's hosted on campus by Leeds University Union in June, with a great lineup of live music, DJs, performers, and more.
- Leeds Festival (top left) for 80,000 music fans and Leeds West Indian Carnival, the UK's second-largest after Notting Hill, both happen every August.
- September's Thought Bubble – the UK's largest event of its kind – celebrates comic art in all its forms.
- Light Night Leeds (left), a multi-arts and light festival, takes place in the city centre in October.
- Leeds International Film Festival, the largest in England outside London, with 300 screenings across 15 days, takes place in November.
- Leeds Christkindelmarkt (bottom left), a traditional German Christmas market, transforms Millennium Square in December.

Find out more at www.visitleeds.co.uk

NEXT STEPS

Choosing the right university is an important decision and an investment in your future.



COSTS TO CONSIDER

There are two main costs to consider at university: tuition fees and your living costs.

TUITION FEES FOR UK AND EU STUDENTS

The tuition fees for 2019 should be confirmed by autumn 2018 and will be available on our website at www.leeds.ac.uk/undergraduatefees

If you spend a year on work placement or studying abroad your tuition fees will be substantially reduced during that year. If you spend this year working or studying in Europe, there may be additional financial support available through the Erasmus+ scheme, provided the UK remains eligible. Find out more on pages 27 and 29.

If you're considering one of our foundation years (see page 85), you may qualify for a partial tuition fee scholarship, depending on your annual household income.

If you intend to study part time, your tuition fee will be adjusted based on the number of credits studied each year.

For more information on the changes to funding for nursing, midwifery and radiography courses, visit www.nhsbsa.nhs.uk/students/816.aspx

You can apply for a tuition fee loan from the government to cover the full cost of your course, or you can pay your tuition fees in full or in instalments. We also offer financial support, bursaries and scholarships to students, so that anyone with the talent and ambition can benefit from a Leeds education, regardless of background. For more information on student funding, see page 74.

TUITION FEES FOR INTERNATIONAL (NON-EU) STUDENTS

Tuition fees for full-time international (non-EU) undergraduate students vary depending on the course you choose. The tuition fees for 2019 should be confirmed by autumn 2018 and will be available on our website at courses.leeds.ac.uk

You may be able to apply for funding from your own government, independent sponsors or from other award-paying bodies. See page 75 for more information on the University scholarships you may be eligible to apply for.

LIVING COSTS

Living costs include things like the cost of your accommodation, food, transport and social activities. Leeds is a relatively low-cost city compared to many areas of the UK, but you still need to budget very carefully.

Leeds University Union offers lots of advice on money, budgeting and the cost of living in Leeds at www.luu.org.uk


If you need to top up your income during your studies, you can find part-time work with a student-friendly and trusted employer through Leeds University Union's Joblink (see page 59). Working not only puts money in your pocket, it can also help you gain valuable experience.

If you're an international (non-EEA/Swiss) student, you should check whether your visa allows you to work part time. When you apply for your visa, you'll have to prove that you can support yourself financially while in the UK. For more information, visit www.leeds.ac.uk/immigration



“I came to the University through the Access to Leeds programme, with a Pathways to Potential scholarship. It means I can really concentrate on studying. I can buy the books I need without having to wait for my student finance. It allowed me to do a summer internship in my first year and helped support the year in industry I took in my third year, both in Germany.”

Naomi Maher

 Find out more about how Naomi has benefited from University financial support at www.leeds.ac.uk/naomimaher



STUDENT FUNDING

Being able to finance your studies is an important factor in your decision to go to university. There are different kinds of financial support that you may be entitled to from the UK government and from the University of Leeds, although this depends on your home country.

FUNDING FROM THE UK GOVERNMENT FOR UK AND EU STUDENTS

Tuition fee loan

This has been designed to ensure that you don't have to pay for your degree up front. If you're a UK student studying for your first degree (whether it's full or part time), or a second degree in nursing, midwifery or an allied health profession (preregistration), you can apply for a tuition fee loan from the government to cover the full cost of your course, including any fees for a year spent in industry or studying abroad.

Funding arrangements for non-UK students from the EU starting university in 2019 and students studying for a second degree were under review by the government at the time of printing.

If you study medicine or dentistry, you're entitled to the same tuition fee loan for the first four years of eligible study. For UK students, the NHS funding arrangements for the fifth and subsequent years were under review by the government for 2019 entry at the time of printing. If you're an EU student, you may be able to apply for a tuition fee loan for your fifth and subsequent years, although this was also under review for EU students for 2019 entry at the time of printing.

You can get up-to-date information at www.gov.uk/student-finance

Maintenance loan

If you're an eligible UK student, you'll be able to get a maintenance loan to help with living costs, which is paid into your bank account at the start of each term. The amount you'll receive depends on your annual household income, where your permanent home is and where you choose to live while you're studying. This loan is repayable, but you won't have to start paying it back until after you graduate.

Funding arrangements for all students starting university in 2019 were under review by the UK government at the time of printing, so keep checking for updates at www.gov.uk/student-finance

You can also check our website for updates at www.leeds.ac.uk/governmentsupport

Applying for government funding

You can apply for government funding online from early 2019; you don't need a confirmed place at university to complete the application.

If you're from England, you'll need to apply for government funding through Student Finance England, which is responsible for assessing the funding available to you.

www.gov.uk/student-finance

The government support package for students from elsewhere in the UK may differ.

If you live in Scotland, apply to www.saas.gov.uk

If you live in Wales, apply to www.studentfinancewales.co.uk

If you live in Northern Ireland, apply to www.studentfinanceni.co.uk

Independent advice is available from the Money Saving Expert website at www.moneysavingexpert.com

Paying it back

Repayments on your combined tuition fee and maintenance loans are modest. You only become eligible to repay them in the April after you graduate and only start to pay them back when you're earning above £25,000 a year working in the UK. If your income doesn't exceed £25,000 a year, you'll never have to repay the loan*.

Regardless of your course and living costs, you'll only repay 9% of your income over £25,000. So, for example, if you are earning £26,000 a year, you would pay back 9% of £1,000, which works out at about £90 per year or, put another way, less than £2 per week*.

The repayment process for most people is simple as it's deducted automatically from their salary through the tax system. If your salary falls below £25,000 or if you stop earning, for example while bringing up a family, your repayments will be automatically suspended during this time. If, after 30 years from when you're eligible, you haven't managed to repay in full, any outstanding loan will be written off, no matter how much you still owe*.

*This information was correct at the time of going to print. You can keep up to date with the latest information about repaying your loans at www.gov.uk/repaying-your-student-loan

Funding for students with support needs

If you have a disability, health problem or learning difficulty, you may be eligible to apply for a Disabled Students' Allowance from Student Finance England (or the equivalent organisation) to pay for specialist academic-related support and equipment. You can get this extra funding on top of your other student finance. It doesn't have to be paid back and it's not means-tested. Our Disability Services team can advise you on sources of funding and eligibility.

+44 (0)113 343 3927

disability@leeds.ac.uk

students.leeds.ac.uk/disabledstudentsfunding

FUNDING FROM US

If you have the talent, drive and potential to succeed, we want to make sure you can study with us, whatever your financial circumstances. We offer one of the most generous funding packages in the country and, best of all, any funding you receive from us does not need to be repaid.

Leeds Financial Support

We offer non-repayable financial support to UK and EU students to help with the costs of being at university, which is linked to annual household income. If your household income is above the threshold, you may still be eligible for a scholarship from us based on academic achievement.

For full-time courses starting in September 2018, students with a household income of up to £36,000 could receive financial help from us. At the time of printing, our funding arrangements for 2019 had not been finalised. Keep checking our website for the latest updates at

www.leeds.ac.uk/leedsfinancialsupport

Scholarships

We offer a range of prestigious scholarships which UK, EU and international students may be eligible to apply for. Most are based on academic achievement in certain subject areas or on household income, but we also offer specialised sports scholarships for elite athletes.

UK students who apply through the Access to Leeds scheme (see page 79) will receive additional consideration for certain scholarships.

www.leeds.ac.uk/accesstoleeds

You can contact the Admissions Tutor for your course to find out whether you are eligible to apply for a scholarship based on academic achievement. Alternatively, a full list, including information on eligibility criteria, deadlines and how to apply, is available on our website. New scholarships are added throughout the year, so keep checking for updates.

www.leeds.ac.uk/scholarships

APPLYING TO STUDY HERE

OUR ENTRY REQUIREMENTS

All our undergraduate courses have their own entry requirements and unless stated, A-levels in general studies and critical thinking are not accepted. For the most up-to-date information, visit courses.leeds.ac.uk

Entry requirements in this prospectus are expressed in terms of the UK A-level system and the International Baccalaureate. Admissions tutors at Leeds welcome applications from students with equivalent qualifications, which we've explained in the table below – specific subjects may be required for your course which you can find at courses.leeds.ac.uk

A-level	IB Diploma	BTEC Extended Diploma	Cambridge Pre-U	Scottish Highers/ Advanced Highers	Irish Leaving Certificate	Access to Higher Education
A*AA	36 points overall (18–17 at higher level)	D*D*D* – D*DD	D3 D3 D3	AA at AH and AAABB/A at AH and AAAAB For non-AH applicants: AAAAA	A1A1AAAA/ H1H1H2H2H2H2	60 credits overall, with 45 credits at level 3 at distinction
AAA	35 points overall (18–17 at higher level)	D*D*D* – DDD	D3 D3 M1	AA at AH and AABBB/A at AH and AAABB For non-AH applicants: AAAAAA	AAAAAA/ H2H2H2H2H2H2	60 credits overall, with 45 credits at level 3 with an overall distinction and no credits below merit
AAB	35 points overall (16 at higher level)	DDD – DDM	D3 M1 M1	AB at AH and AABBB/A at AH and AABBB For non-AH applicants: AAAABB	AAAABB/ H2H2H2H2H3H3	60 credits overall, with 45 credits at level 3 with an overall distinction and no credits below merit
ABB	34 points overall (16 at higher level)	DDM	M1 M1 M1	BB at AH and AABBB/B at AH and AAABB For non-AH applicants: AABBBB	AAABBB/ H2H2H2H3H3H3	60 credits overall, with 45 credits at level 3 with an overall distinction and no credits below merit

Literacy and numeracy requirements

You need to have a minimum acceptable level of literacy: minimum GCSE grade C/4 or equivalent.

If you have a GCSE grade C/4 in mathematics but the course you're applying for requires a higher grade, we'll accept the Core Maths qualification, although the grade required will depend on your course.

Some courses require a minimum GCSE mathematics grade, or equivalent. To find out the full entry requirements for your course, visit [courses.leeds.ac.uk](https://www.leeds.ac.uk/courses)

Science A-levels in England

If you're studying a science A-level in England, you'll also need to achieve a pass in the practical assessment.

Extended Project

The Extended Project gives you the chance to develop important research and academic skills, helping you prepare for university study. Individual academic schools will decide whether they're going to use the Extended Project as part of their offer.

We encourage you to provide further information on your project in your personal statement and, if invited, at interview. In some cases, admissions tutors may make an alternative offer to an applicant that includes successful completion of the Extended Project – for example, AAA at A-level or AAB at A-level plus the Extended Project. The admissions team in the academic school will be able to give you more clarification on this.

ENTRY REQUIREMENTS FOR INTERNATIONAL APPLICANTS

If you're an international student, read more about our entry requirements, including equivalent level three qualifications at

www.leeds.ac.uk/internationalentry

International Foundation Year options

If you're not able to gain the equivalent of A-level qualifications in your own country, you should consider applying for one of our International Foundation Year options (see page 85).

www.leeds.ac.uk/internationalfoundation

English language requirements

If English is not your first language, you'll need to gain an English language qualification. Many qualifications are acceptable. Typical examples include GCSE or O-level at minimum grade C/4, or IELTS 6 (with at least 5.5 in each component of listening, reading, speaking and writing).

English language requirements are subject to change and vary between courses, so you'll need to check the level necessary for your course.

If you need to improve your English language skills before you start your course, you may want to consider one of the pre-sessional courses provided by our Language Centre (see page 23).

Find out more at

www.leeds.ac.uk/summerpresessionals

Visa and immigration requirements

If you're an international (non-EEA/Swiss) student, you'll need to hold an appropriate visa to study in the UK. You can find specialist immigration advice on our website, which will guide you through the visa application process at www.leeds.ac.uk/tier4visa

At the time of printing, the situation for EEA/Swiss students beyond March 2019 was unknown. Keep checking for updates at www.leeds.ac.uk/brexit

HOW TO APPLY



Depending on the course you choose, there are different ways to apply to the University of Leeds.

UCAS APPLICATIONS

For full-time courses starting in September 2019, with the exception of International Foundation Year options, you apply online through UCAS from 1 September 2018. The deadline for applications is 15 January 2019, with the exception of Medicine (A100) and Dental Surgery (A200) where the closing date is 15 October 2018. UCAS will acknowledge your application and let you know the outcome. Late applications may be considered, but you should check with the relevant admissions team before making a late application.

If you're an international student, you should also apply through UCAS. We have a network of international representatives who can help you with your application. Find out more at www.leeds.ac.uk/internationalstudents

You apply online at www.ucas.com/students/apply

APPLICANT VISIT DAYS AND INTERVIEWS

If you apply through UCAS, you may be invited to an applicant visit day or interview before you accept an offer. These are really important as you'll spend time in the academic department talking to staff and students and experiencing what student life is like at Leeds. Find out more about visiting campus on page 81.

RECEIVING AN OFFER

Following the government's reform of A-levels in England, we'll continue to make offers based on three A-levels or equivalent. You won't be disadvantaged when you apply to study at the University of Leeds if you don't have AS-level results.

We make offers based on the information you provide in your UCAS application, including your personal statement and reference.

DEFERRED ENTRY

We welcome applications from students who want to defer their entry – this means applying for a course and then taking a year out before going to university. If you would like to defer your entry, you need to state this in your UCAS application.

INTERNATIONAL FOUNDATION YEAR OPTIONS

You do not apply through UCAS for these courses as you apply directly to the course provider. See page 85 for more information, or for details on how to apply, visit www.leeds.ac.uk/internationalfoundation

MATURE AND PART-TIME STUDENTS

If you're a mature student or want to study part time, the Lifelong Learning Centre offers a free, confidential and impartial pre-entry guidance service. Our experienced staff can also talk to you about how you might meet the entry criteria and what support may be available to you.

www.leeds.ac.uk/lifelonglearningadvice

ALTERNATIVE ADMISSIONS

Leeds has a socially diverse student community and we actively welcome applications from students from all backgrounds.

Our admissions policy aims to provide fair and equal access to a university education for everyone who has the potential to benefit from it. The latest admissions policy can be downloaded at www.leeds.ac.uk/admissionspolicy

As part of this commitment, we have developed a range of activities to improve access and widen participation in higher education.

ACCESS TO LEEDS SCHEME

Access to Leeds, the University's widening access scheme, guarantees special consideration if your personal circumstances have affected your ability to demonstrate talent and potential through grades alone. The scheme, which is the largest in the UK, enables our admissions tutors to consider the context surrounding your educational achievements to understand your potential to succeed at Leeds.

Access to Leeds is open to all applicants in the UK who meet the eligibility criteria and can be used in applications to any of the University's undergraduate degrees. Applicants to the scheme who receive a standard offer will also receive an Access to Leeds offer of two A-level grades (or equivalent) below the standard offer.

To be eligible, you must be living permanently in the UK, have the potential to study at the University of Leeds and meet two or more of the following criteria:

- from a household with an annual income of £25,000 or less
- in the first generation of your immediate family to apply to higher education
- your school achieved less than the national average Attainment 8 score at GCSE
- your only option is to attend a local university
- your studies have been disrupted by circumstances in your personal, social or domestic life
- living in a geographical area with low levels of progression to higher education
- living in or grew up in public care.

Find out more at www.leeds.ac.uk/accesstoleeds

ALTERNATIVE ENTRY SCHEME

If you don't have the formal qualifications for immediate entry to a degree course, our Alternative Entry Scheme takes account of your work and life experience. The scheme only applies to certain degrees and it usually involves an interview and one or more pieces of work, set and marked by the relevant admissions tutor. If you don't have the required GCSEs, you may also be asked to take tests in English and maths. For more information, visit www.leeds.ac.uk/lifelonglearning



VISIT US AND FIND OUT MORE

The best way to find out more about what Leeds is like is to visit us.

Every year we welcome thousands of students at open days, on campus tours and applicant visit days. These are a great way to explore our campus and sample university life.

UNIVERSITY OPEN DAYS

University open days are designed to help you decide where to apply. Our open days give you a chance to find out more about the course, attend subject presentations, speak to academics, talk to student ambassadors, find out more about where you would be living, and talk to our experts about finance and how to apply.

You can also visit some of our student accommodation and take tours of our students' union building, indoor sports facility and libraries. You're welcome to bring others with you, including parents and carers. As our campus is a short walk from Leeds city centre, you can visit the city too. Taking a stroll around the city is a great way to see what it has to offer.

Open days 2018

Friday 15 June

Saturday 16 June

Saturday 8 September

Saturday 6 October

www.leeds.ac.uk/opendays

ACCOMMODATION VIEWING DAY

We hold a viewing day each year in the spring, when all our residences are open for you to visit and explore. You'll be able to see the facilities and talk to students and staff, who will be on hand to show you around and answer your questions.

accommodation.leeds.ac.uk

CAMPUS TOURS

If you can't attend an open day but would like to visit the University, we offer organised campus tours throughout the academic year. Guided by one of our current students, you'll have the opportunity to ask questions about life at Leeds. Depending on when you visit, you may also be able to visit the academic department you're interested in, but you should contact them in advance to arrange an appointment.

INDEPENDENT VISITS

If you're unable to make a guided campus tour or you would rather explore the campus on your own, you can make an independent visit. We have a self-guided tour programme that you can download from our website. You can visit at any time, but remember that University buildings are not normally open at weekends. If there is a particular academic department you would like to see, you should arrange this directly with the relevant department.

FIND OUT MORE

We hope you have a chance to join us on campus. See page 86 for more information on where we are and how to find us or visit

www.leeds.ac.uk/campustours

Our website has much more information – on facilities, campus life, student and staff profiles, and more about life in Leeds. You'll also find up-to-date fees and finance information.

www.leeds.ac.uk

For a full list of our single and joint honours courses, visit courses.leeds.ac.uk

IMPORTANT INFORMATION

Information provided by the University, such as in presentations, University brochures and on the University website, is accurate at the time of first disclosure. However, courses, University services and content of publications remain subject to change. Changes may be necessary to comply with the requirements of accrediting bodies or to keep courses contemporary through updating practices or areas of study. Circumstances may arise outside the reasonable control of the University leading to required changes. Such circumstances include industrial action, unexpected student numbers, significant staff illness (where a course is reliant upon a person's expertise), unexpected lack of funding, severe weather, fire, civil disorder, political unrest, government restrictions and serious concern with regard to the transmission of serious illness making a course unsafe to deliver. After a student has taken up a place with the University, the University will look to give early notification of any changes and try to minimise their impact, offering suitable alternative arrangements or forms of compensation where it believes there is a fair case to do so. Offers of a place to study at the University will provide up-to-date information on courses. The latest key information on courses, entry requirements and fees can be found at courses.leeds.ac.uk. Please check this website before making any decisions.

FINDING THE RIGHT COURSE FOR YOU

Our courses are designed to offer flexible study options and alternative routes for those looking to return to study.

SINGLE HONOURS COURSES

Our undergraduate single honours courses allow you to focus in depth on one main subject, but most of these courses also include the option to take discovery modules (see page 18).

Some of our degree courses are offered as integrated Masters – you undertake three years of undergraduate study with the fourth year taught at postgraduate level, converting your undergraduate degree to a postgraduate one. You may also be able to spend a year in industry or studying abroad, which would mean extending your degree by a further year. Check our website as you may need higher qualifications to apply for these courses at courses.leeds.ac.uk

JOINT HONOURS COURSES

If you want to study more than one subject in depth, our joint honours courses offer exciting combinations of two subjects in one degree. We have expertise in a wide range of subjects, which is why we can offer one of the most varied selections of joint honours degrees in the country.

Studying a joint honours course doesn't mean twice the work. You'll study the same number of credits as a single honours student but will take fewer optional modules.

Joint honours courses vary in length, depending on which you choose. All courses that include a modern foreign language are either four or five years long, as you'll spend time studying abroad as part of your course. Other courses normally last three years, unless you choose to spend an additional year studying abroad or in industry (see pages 27 and 29).

There are a small number of subjects that can only be studied as joint honours courses:

- Ancient History
- Classical Literature
- Comparative Literature
- European Studies
- Film Studies
- History and Philosophy of Science
- Portuguese
- Russian Civilisation

For up-to-date course details and all the subject combinations you can study, visit courses.leeds.ac.uk



PART-TIME STUDY

If you're a mature part-time student, you could choose one of our degrees in a professionally-related discipline.

These courses include Professional Studies (also available full-time), and part-time degrees in Business Management and Leadership, Child and Family Studies, and Learning and Teaching. They're designed so that contact time is clustered, making it possible for study to be combined with work or family commitments.

If you're an international student and need a Tier 4 visa to study in the UK, you won't be able to study a part-time course.

Find out more about part-time courses at www.leeds.ac.uk/lifelonglearning

On successful completion, you can progress automatically to one of more than 140 selected undergraduate degree courses in a range of subjects. Check our website to see if the University's International Foundation Year is available for your chosen course at www.leeds.ac.uk/internationalfoundation

Alternatively, you could consider the Leeds International Study Centre's International Foundation Year, based at Leeds Beckett University. Delivered by Study Group, this course will also help you to develop the skills and knowledge you need to succeed at university, with start dates in January and September.

If you want to stay in your home country to complete your foundation year studies, the University of Leeds is an owner member of NCUK, which delivers International Foundation Years at teaching centres in countries worldwide.

Find out more about these options at www.leeds.ac.uk/internationalfoundation

INTERNATIONAL FOUNDATION YEAR OPTIONS

If you're an international student and your qualifications are not equivalent to UK A-levels, there are different options for studying an International Foundation Year, which will prepare you for undergraduate study at Leeds.

The University's International Foundation Year is a popular course, which combines study skills with academic subjects relevant to your chosen course. The course starts in September each year and, because it's based on campus, you'll be taught by our academic staff and you'll be able to use all our student facilities.

FOUNDATION YEARS

If you don't meet the typical entry requirements for direct entry to one of our undergraduate courses, you could apply for one of our foundation years. These help you develop the skills and knowledge you need to progress to one of our standard degree courses.

We offer a number of foundation years in a range of subject areas – entry to these varies depending on whether you are a UK or EU student.

For more information about these courses, visit courses.leeds.ac.uk or www.leeds.ac.uk/foundation

For information on how to apply to any of our courses, see page 78.

MAPS AND HOW TO FIND US

HOW TO GET HERE

For full details on how to get here by train, bus, car and air visit www.leeds.ac.uk/howtofindus



CITY	DISTANCE	MINIMUM TRAVEL TIME (BY TRAIN)
York	24 miles	22 minutes
Manchester	42 miles	54 minutes
Newcastle	96 miles	1 hour 27 minutes
Birmingham	118 miles	1 hour 55 minutes
London	195 miles	1 hour 59 minutes (King's Cross)
Edinburgh	206 miles	3 hours



UNIVERSITY OF LEEDS CAMPUS

THE CAMPUS AND THE CITY

Our campus is a short, 10-minute walk from the city centre and all the attractions and amenities it has to offer, including theatres, bars, restaurants, bus and rail stations and more.

www.leeds.ac.uk/citylife

LEEDS
CITY TRAIN
STATION

LGI
HOSPITAL

INNER RING ROAD

CIVIC
HALL

WOODHOUSE LANE

O'ACADEMY

LEEDS
CITY
MUSEUM

TOWN
HALL

ART
GALLERY

THE LIGHT

FIRST
DIRECT
ARENA

GRAND
THEATRE

VICTORIA
QUARTER
SHOPPING

TRINITY
LEEDS
SHOPPING

VICTORIA
LEEDS SHOPPING

KIRKGATE
MARKET

COACH/
BUS
STATION

WEST
YORKSHIRE
PLAYHOUSE



This prospectus was printed in February 2018 and some of the information in it may have changed. For more information about our undergraduate courses, visit courses.leeds.ac.uk

Produced by Communications, University of Leeds.
Printed by Belmont Press.

STUDENT CASE STUDIES

Photography by Andy Lord Photography, Motus TV and Mark Webster Photography Ltd.

The image on page 26 was taken by Sam Barrett and the images on page 27 were supplied by the students featured.

Filming by Clearhead, with additional study abroad footage filmed by Sam Barrett.

Alternative formats

If you require any of the information in this prospectus in an alternative format eg Braille, large print or audio, email disability@leeds.ac.uk



UNIVERSITY OF LEEDS

Admissions Enquiries
University of Leeds
Leeds LS2 9JT
UK

+44 (0)113 343 2336
study@leeds.ac.uk

www.leeds.ac.uk/undergraduate