

20  
22

UNDERGRADUATE  
PROSPECTUS



UNIVERSITY OF LEEDS

# Our campus by the city

## Parkinson Building

The iconic landmark building of the University.

## Laidlaw Library

Designed for our undergraduate students.

## The Edge

Swimming pool, gym and sports halls.

## St George's Field

A beautiful green space in the heart of campus.

## Leeds University Union

Shops, cafés, bars, music venues and more.

## Western campus

Home to the University's Business School and School of Law, as well as the M&S Company Archive.

## North-east quarter

The Sir William Henry Bragg Building, creating an integrated campus for engineering and physical sciences.

Parkinson Building

Laidlaw Library

The Edge

Leeds General Infirmary

Leeds city centre

Only a 10-minute walk from campus.

Leeds train station

Only a 15-minute walk from campus.

Leeds University Union

St George's Field

North-east quarter

Western campus





# Contents

<b>Go further, come to Leeds</b>	<b>4</b>	<b>Wellbeing and support</b>	<b>46</b>
The Leeds experience	8	Support services	48
		International student support	51
<b>Be inspired</b>	<b>11</b>	<b>Campus life</b>	<b>53</b>
Research that makes a difference	12	Students' union	58
Research-based learning	15	Sport and fitness	60
Blended learning	16		
<b>Tailor your experience</b>	<b>25</b>	<b>City life</b>	<b>64</b>
Work experience	26	<b>Next steps</b>	<b>73</b>
Student enterprise	28	Costs to consider	74
Volunteering	29	Student funding	76
Study abroad	30	Applying to study here	78
Clubs and societies	32	Alternative admissions	82
<b>Prepare for your future</b>	<b>35</b>	<b>Find your course</b>	<b>87</b>
Career development	36	Course options	88
<b>Finding your new home</b>	<b>40</b>	<b>Subjects and courses</b>	
Choosing your accommodation	42	<b>The campus and the city</b>	<b>90</b>
Explore our accommodation.	43		
Our residences at a glance	44		

## IMPORTANT INFORMATION

Information provided by the University, such as in presentations, University brochures and on the University website, is accurate at the time of first disclosure. However, courses, University services and content of publications remain subject to change. Changes may be necessary to comply with the requirements of accrediting bodies or to keep courses contemporary through updating practices or areas of study. Circumstances may arise outside the reasonable control of the University leading to required changes. Such circumstances include industrial action, unexpected student numbers, significant staff illness (where a course is reliant upon a person's expertise), unexpected lack of funding, severe weather, fire, civil disorder, political unrest, government restrictions and serious concern with regard to the transmission of serious illness making a course unsafe to deliver. After a student has taken up a place with the University, the University will look to give early notification of any changes and try to minimise their impact, offering suitable alternative arrangements or forms of compensation where it believes there is a fair case to do so. The latest key information on courses, entry requirements and fees can be found at [courses.leeds.ac.uk](https://courses.leeds.ac.uk). Please check this website before making any decisions.

# Go further, come to Leeds.

When you choose to study here, you'll join a welcoming community of like-minded students and outstanding academics who share your passion for your subject.

**Top 100**  
university in  
the world

QS World University  
Rankings 2021





## Open days 2021

Find out about our next  
open day events at

[www.leeds.ac.uk/  
opensdays](http://www.leeds.ac.uk/opensdays)



## Welcome to Leeds

It's the whole student experience you get at Leeds that makes us different.

Get involved in research, tailor your course with discovery modules and take advantage of life-changing opportunities. Join us and be part of a prestigious, research-intensive Russell Group university, where you'll gain skills that will be invaluable to you, personally and professionally, for years to come.

You'll also enjoy some of the best university facilities on offer at Leeds and we'll support you every step of the way. And it's all on one campus, in the heart of a thriving, friendly and multicultural city.

Inside this prospectus you'll discover what student life here is like. You'll also learn what our graduates have achieved and what our students say about studying here.

### COVID-19 updates

We hope that by the time you're ready to start your studies with us the situation with COVID-19 will have eased. We'll continue to review our courses and other parts of the student experience in response to COVID-19 and we may need to adapt our provision to ensure the safety of our students. Keep checking our website for the latest updates at

[www.leeds.ac.uk/covid19faqs](http://www.leeds.ac.uk/covid19faqs)

### Connect with us



Get the most up-to-date information on our courses, entry requirements, fees and student funding at [courses.leeds.ac.uk](http://courses.leeds.ac.uk)

# The Leeds experience.

Don't take our word for it.  
Find out from our students how they've  
made the most of their time at Leeds.



## Research-based learning

*My lecturers were involved in the latest robotics research, which impacts our lives in a big way. I learnt the theory in the classroom and then applied it practically in the lab.*

**Jefferson Sanchez**



## Discovery modules

*Discovery modules can take you out of your course bubble. It's an option to be adventurous with, as you can do something completely unrelated to your course.*

**Faidat Akinwole Braimoh**



## Student enterprise

*The opportunities on offer at Leeds inspired me to make my business a success. The support was absolutely amazing too – I got an office and industry experts as mentors.*

**Harriett Howe**



## Volunteering

*Volunteering is a great way to meet new people and make friends. I was able to put my degree into practice, working with children in local schools.*

**Sophia Omarji**



## Work experience

*Working with people who had lots of experience in industry just blew me away and it's helped me to become so much more confident.*

**Ellie Sleightholm**



## Alternative admissions

*The University was there for me even before I started my course, which really settled my nerves and helped me understand more about studying for a degree.*

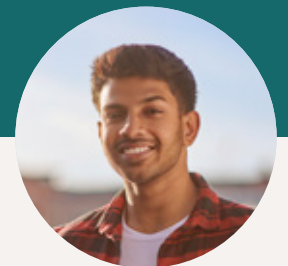
**George Hobley**



## Clubs and societies

*The people I met through joining clubs and societies made my university experience. Some of my best memories came from just putting myself out there and trying new things.*

**Isabella Bidlake Hull**



## City life

*The campus is really close to the city centre and I like how handy everything is. I can walk into town to grab some shopping or meet some friends for a bite to eat.*

**Rohan Cheerale**



# Be inspired.

Join the next generation of highly skilled, independent critical thinkers – shaping the world around you in years to come.

**We're a member  
of the prestigious  
Russell Group of  
research-intensive  
universities**

# Research that **makes a difference.**

Our research tackles the big issues affecting today's world. From helping fight COVID-19 to tackling climate change, researchers at Leeds are involved in pioneering work to build a better future.

Take a closer look at what we're working on at [www.leeds.ac.uk/research](http://www.leeds.ac.uk/research)

## Understanding COVID-19

We're using computer simulation to help scientists discover new antiviral drugs to treat COVID-19 by visualising ever-changing proteins in atomic detail.



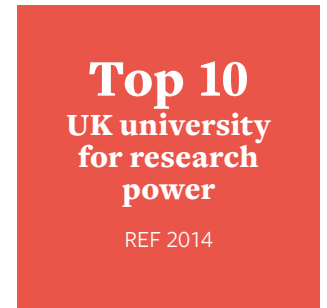
## Using robotics to make colonoscopy kinder and easier

We're developing robot-assisted colonoscopy that can guide instruments to precise locations in the body, making it less painful for patients and easier for doctors and nurses to perform the procedure.



## Developing solutions for a changing climate

By using satellite data to generate information on polar ice thickness and melting rates, we're able to track global sea level rises with more accuracy than ever before.



## Creating the cities of tomorrow

Our researchers are leading a £4.2m national research project to create self-repairing cities by developing robots to fix utility pipes, street lights and roads with minimal disruption.



## Supporting conflict survivors

We're empowering young people across the world, whose lives have been affected by conflict, to share their personal experiences and messages, using creative media to give them a voice.



## Research-based learning

Learn about new discoveries and breakthroughs as they happen – sometimes even before they've been published. Our globally recognised research feeds directly into your course and shapes what you learn at Leeds.

Together, we'll look at how research influences your subject and the link between your academic study and societal needs, covering ethical issues, global and cultural influences, and employability to help prepare you for future success.

You'll study among inspirational academics – experts who share your passion for your subject. Some may even have written textbooks and research articles you'll use on your course. They'll challenge you to explore, question and discover, so you become an independent critical thinker. You'll learn how to define problems and how to go about finding answers – skills highly valued by graduate employers.

You could apply for a Laidlaw Undergraduate Research and Leadership Scholarship in your first year, which helps you develop leadership skills while you're working on a live research project led by our academic staff.

During your course you'll have lots of opportunities to work alongside our academics through research projects and placements, so you can develop your own research skills and experience first-hand how knowledge is created.

In your final year, you'll carry out your own research project, so you can apply your research skills and make your own discoveries. You may even get the chance to present your findings at an undergraduate research conference – a great way to develop your presentation skills as a young researcher.

Jefferson Sanchez

Pictured in the National Instruments Active Learning Laboratory

“

*My lecturers were involved in the latest robotics research, which impacts our lives in a big way. I learnt the theory in the classroom and then applied it practically in the lab. I enjoyed the hands-on element of working with electronics and mechanics. For one of my projects I designed a robotic arm for a drone that could pick up and place objects. It's great how you can think outside the box at Leeds.*

# Shaped by research.

Studying a degree that crossed different disciplines helped Jefferson to develop a deep understanding of his subject and bring his own inventions to life.



## Blended learning

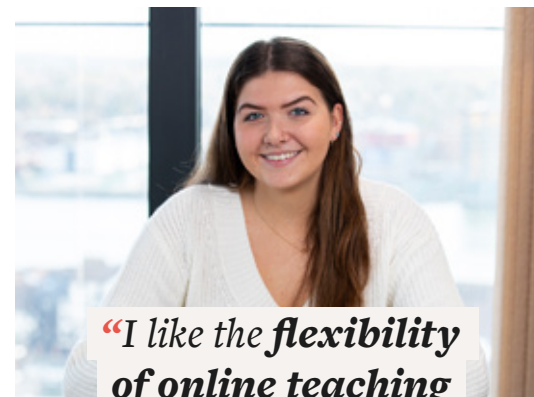
Teaching here is designed to be flexible, offering a blend of face-to-face and online learning, so you get the best of both worlds.

Our digital learning environment is interactive and engaging, using the latest multimedia technology to stimulate discussion between you, other students and your tutors as part of a supportive and community-focused experience.

Our campus has some of the best facilities to support you in your studies but you'll also have the freedom to learn online, where and when it suits you and at your own pace.

### Excellent teaching

Our staff have been awarded the highest number of National Teaching Fellowships in the country, recognising their skills and commitment to outstanding teaching in higher education. We're also proud to have achieved a Gold rating in the Teaching Excellence Framework (TEF), meaning our teaching is of the highest quality found in the UK.



*“I like the flexibility of online teaching and being on campus for seminars with smaller groups of students. The variety helps me to work through each week’s workload at my own pace and gives me time to do any reading or prep work for seminars.”*

**Sophie Riley**

### You'll benefit from a high-quality learning experience, which includes:

- support to help you adjust to studying at university, including regular contact with an academic personal tutor, who'll help guide your academic, personal and professional development
- a blend of virtual and face-to-face teaching (lectures, seminars and tutorials), with time for independent study, project work, laboratory practicals or fieldwork
- lecture theatres and seminar rooms with the latest digital learning technology, so you can work with other students, share group work and interact with your lecturer
- access to video and audio recordings of most of your lectures and other learning activities through our Virtual Learning Environment, so you can go back over your course content at any point in the year

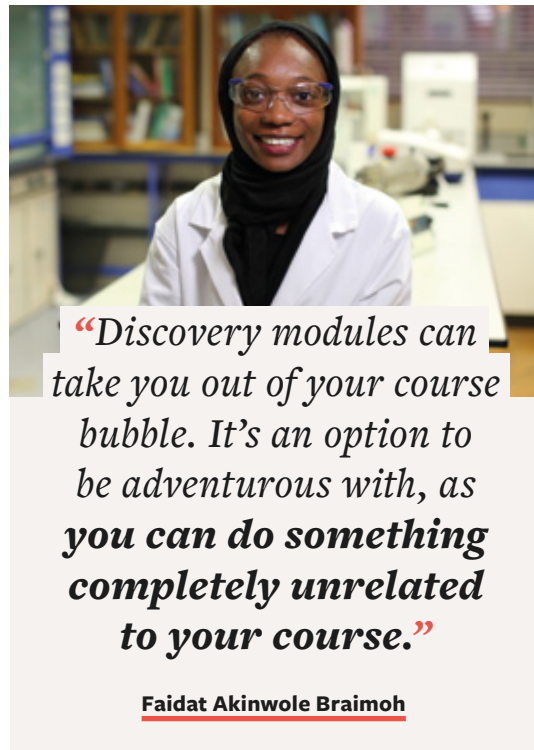


## Broaden your studies

You'll broaden your studies beyond your subject area through our discovery themes. You'll explore these themes as part of your course as they're embedded in the curriculum.

On most of our courses you can also take discovery modules. They're a great way to tailor your study around your interests or career aspirations, helping you stand out from the crowd when you graduate. You could choose something related to your course or an existing interest, try something completely different, develop your transferable skills, or even learn a foreign language to prepare for a year working or studying abroad (see page 26 and page 30).

Explore our discovery themes at [leedsforlife.leeds.ac.uk/broadening](https://leedsforlife.leeds.ac.uk/broadening)



*“Discovery modules can take you out of your course bubble. It’s an option to be adventurous with, as you can do something completely unrelated to your course.”*

**Faidat Akinwole Braimoh**





## Study facilities.

We're continually investing in our campus. From new laboratories and lecture theatres to one of the largest and most impressive libraries in the UK, you'll find everything you need for your studies right here.



### Libraries

The University Library at Leeds is one of the major academic research libraries in the UK. Its print and online collections, gathered over 100 years, attract students and researchers from around the world.

Our Laidlaw Library, purpose-built for undergraduate students, has a variety of individual and group study spaces to suit the way you work.

#### You'll benefit from:

- dedicated library collections for your subject area, including items digitised especially for your course
- easy access to more than three million print and online library resources
- four libraries on campus, open late seven days a week during term time
- different working environments, including group study areas and silent individual study spaces, as well as cafés for study breaks
- IT zones and study facilities equipped with the latest technology, including bookable rooms for group work and interactive presentation equipment
- outstanding collections of rare books and manuscripts, which you can use for individual and group research as part of your course
- support for academic skills, including report and essay writing, presenting and time management
- expert library staff on hand to help

[library.leeds.ac.uk](http://library.leeds.ac.uk)



## Computers and software

Through your University account, you'll have access to the best technologies and services to support your studies.

### You'll benefit from:

- a range of standard and specialist software and services
- free high-speed wi-fi across campus
- a suite of tools and services provided through Microsoft Office 365, seamlessly linked to your University account and securely available from anywhere in the world
- free access to licensed copies of Office 365 ProPlus for you to use at home or on the move
- personalised content (like your timetable and library record) on your phone through the UniLeeds app
- 24-hour access to personal computing resources with on-campus and cloud-based options, so you can study whenever and wherever it suits you
- help and support from our IT Service Desk

[it.leeds.ac.uk](http://it.leeds.ac.uk)

## Digital learning spaces

At Leeds you'll be able to engage with your learning in creative ways and at a pace that suits you.

### You'll be able to:

- access all the resources you need for your studies through our Virtual Learning Environment
- use mobile voting tools during your classes to test your understanding, ask questions, interact with your peers and give feedback
- track your learning progress
- access our collection of digital learning resources, including videos, ebooks, podcasts and specialised resources to support your learning
- reflect and record all your achievements with our online portfolio system



## Language learning

Once you've started your course, you can access learning materials from our Language Zone in more than 50 languages, including English. As well as a study and resource centre on campus, there are lots of activities and resources online to help you improve your language skills or learn a new language. And it's all free.

You can practise your conversation skills with native speakers through our language exchange, or join one of our student-led language groups. You could also take a language module as part of your degree (see page 18).

If English isn't your first language, you can improve your academic English level and prepare for university study with our undergraduate pre-sessional English course, available before you start. And once you've started your main academic course, you can access workshops and advice to continue improving your academic English language skills.

[www.leeds.ac.uk/languagecentre](http://www.leeds.ac.uk/languagecentre)





# Tailor your experience.

---

Explore, grow and develop through an incredible range of opportunities, meaning you can make your time with us unique.

**3rd**  
in the UK  
for student  
experience

Times Higher Education  
Student Experience  
Survey 2018

# Out of this world.

Ellie loves space and jumped at the chance to do a remote placement with the UK Space Agency but she didn't expect to develop a new passion.



“

*On my placement I got the opportunity to learn programming and how to code. The experience incorporated so many transferable skills and encouraged me to think analytically, which will really help in the final year of my maths degree and beyond. It was such a phenomenal experience, I started my own business to inspire others to learn how to code. Working with people who had lots of experience in industry just blew me away and it's helped me to become so much more confident.*

**Ellie Sleightholm**

Intern on the UK Space Agency's placement scheme

## Work experience

Increase your confidence, develop commercial awareness and learn how to build professional networks. You might even get a future job offer.

Most of our courses give you the opportunity to do a work placement and we're here to help you find one.

Our close partnerships with a range of organisations give you the opportunity to apply for roles advertised exclusively to University of Leeds students. Previously, roles have been available with the Environment Agency, Network Rail, NHS Digital, Virgin Media and First Direct, as well as smaller local companies, charities and third-sector organisations.

There are lots of ways you can gain work experience during your time at Leeds.

### You could take part in:

- a work placement year
- short placements and project work as part of your course
- student ambassador roles or internships on campus
- summer internships

Placements can be virtual or in person and they could be in the UK or overseas. If you study medicine, dentistry or healthcare, clinical or professional placements are already built into your course.

They all give you valuable real-world experience, develop your skills, enhance your CV and boost your career prospects. They're also a great way to help you decide what kind of career you might like when you graduate.

Each year our students secure placements with large corporations such as L'Oréal, Airbus, Goldman Sachs and Warner Bros, small-to-medium-sized enterprises such as Screenhouse Productions, Bluesmith and the Meatless Farm, and charities and not-for-profit organisations such as Marie Curie, Great Ormond Street Hospital and Yorkshire Cancer Research.

[www.leeds.ac.uk/workexperience](http://www.leeds.ac.uk/workexperience)

## Student enterprise

Whether you want to learn about enterprise or become an entrepreneur, you can get a head start at Leeds.

Our Centre for Enterprise and Entrepreneurship Studies runs enterprise-related discovery modules (see page 18). You'll develop transferable skills such as commercial awareness, creative problem-solving, teamworking, leadership and communication – skills top employers look for in graduates.

If you have an idea for starting your own business, Spark, our business start-up service, can help you develop your idea into a viable business.

### You'll benefit from:

- start-up advice and support throughout your entrepreneurial journey
- access to funding
- bespoke workshops
- experienced business mentors
- professional networking events
- office space

You could apply for an Enterprise Scholarship to help with business, training and transport costs, and win up to £2,000 to get you started in our annual business plan competition.

Leeds University Union also runs some great enterprise-focused student societies where you can develop your skills and get practical experience (see page 32).

[www.leeds.ac.uk/enterprise](http://www.leeds.ac.uk/enterprise)



*“The opportunities on offer at Leeds inspired me to make my business a success. The support was absolutely amazing too – I got an office and industry experts as mentors.”*

**Harriett Howe**



## Volunteering

Become one of around 3,500 students at Leeds who make a difference to the lives of others each year.

Volunteering is a great way to give something back to the local community, enhance your CV and broaden your life experience, as well as meet new people and have fun.

Whether you have a few hours to spare or more time to volunteer, there'll be something you can get involved with.



*“Volunteering is a great way to meet new people and make friends. I was able to put my degree into practice, working with children in local schools.”*

**Sophia Omarji**

Here are some of the volunteering opportunities you could get involved in:

- support young people in local schools through the Students into Schools scheme
- befriend an older person in the local community to help reduce isolation and loneliness
- become a sustainability volunteer
- coach others in your sport
- help young refugees and asylum seekers improve their English
- get involved in a Leeds University Union volunteering society
- join a great local community project such as Hyde Park Source, an environmental charity

Funding is also available if you want to start your own project.

You could even get involved in one of our international volunteering projects, such as helping to run a summer school for children in rural Cambodia, which will add another dimension to your University experience.

[www.luu.org.uk/volunteering](http://www.luu.org.uk/volunteering)





Lucy Yong – University of Wisconsin-Madison, US

## Study abroad

Most of our courses give you the chance to study abroad. That's something not all universities can say.

Studying abroad as part of your degree is a life-changing and confidence-boosting opportunity like no other. It's a chance to experience another culture, make new friends and broaden your outlook on life.

Employers value graduates with international experience. Being able to adapt to new surroundings and learning important life skills while studying abroad will put you ahead of the competition when you graduate. And it's amazing fun too.

We have over 300 university partners worldwide. Popular destinations include Europe, the US, Canada, Australia, New Zealand, Singapore, Korea, South Africa and Latin America.



Kim Maguire – Monash University, Melbourne, Australia

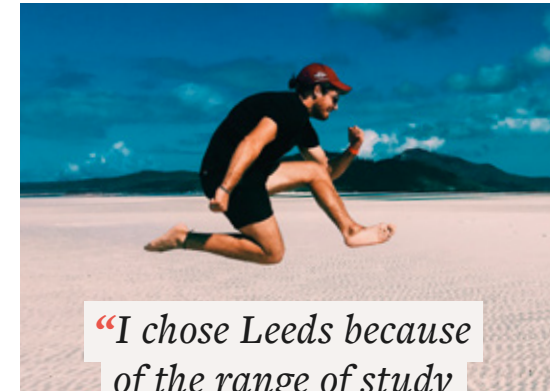


Adam Bilbey – Universidad de Guadalajara, Mexico

You could extend your degree by a year and spend your third year abroad, either taking modules relevant to your course or developing your foreign language skills and cultural awareness. Subsidised summer schools are also available for up to six weeks in Europe, Asia or Latin America, usually after your first or second year.

You don't need to be fluent in another language to study abroad. You could go to an English-speaking country or study at one of our Asian or European partner universities, which offer tuition in English. Our Language Centre can give you advice on language-learning opportunities before you go (see page 23).

[www.leeds.ac.uk/studyabroad](http://www.leeds.ac.uk/studyabroad)

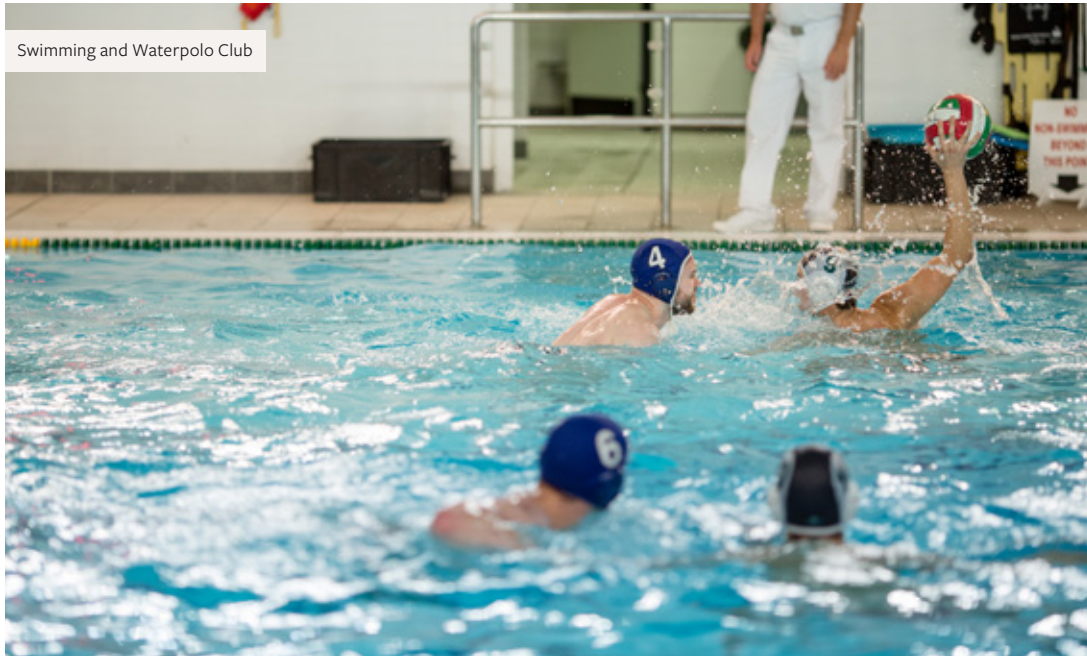


*“I chose Leeds because of the range of study abroad options. I went to the University of Adelaide. It was a fantastic experience. I travelled and worked and really gained my independence.”*

**Ben Barrett**



Elizabeth Wilder – Nanzan University, Nagoya, Japan



Swimming and Waterpolo Club

## Clubs and societies

Your students' union, Leeds University Union, runs more than 300 student-led clubs and societies, bringing together like-minded students.

They're a great way to meet new people, have fun and create some amazing memories. You'll also develop valuable skills while you're studying, like teamworking and leadership.

You can get involved in lots of great activities and explore many interests. Football, caving, faith, theatre, gaming, dance, photography, skydiving, a cappella and even Quidditch are all on offer, and much more. Read more about Leeds University Union on page 58.

Most academic schools have their own societies too, offering social events and talks from industry professionals. They're a great way to get to know people from other courses and year groups.

[www.luu.org.uk](http://www.luu.org.uk)



*“The people I met through joining clubs and societies made my university experience. Some of my best memories came from just putting myself out there and trying new things.”*

**Isabella Bidlake Hull**



Ballet Society



Women's Rugby Union



K-pop Dance Society



Aikido Club



Leeds Bhangra Society



IBM

# Prepare for your future.

---

Make the most of the opportunities at Leeds to gain the skills and confidence to stand out from the crowd.

**7th**  
**most targeted**  
**UK university by**  
**graduate recruiters**

The Graduate  
Market in 2020,  
High Fliers Research

# Career development

Leeds is one of the most targeted UK universities by graduate recruiters. There are lots of opportunities for you to talk to potential employers about the career you're interested in.

Your course and all the other experiences you'll have here mean you can develop skills that employers want. And because we help you start planning for your career as soon as you get here, you can be ahead of the competition when you graduate.

Get help planning your career from our expert Careers Service staff, who can continue to support you even after you graduate. They can help you improve your CV and offer advice on finding work experience, writing job applications, preparing for interviews and the various options after graduation, including further study. They also teach accredited career-related discovery modules (see page 18) and offer one-to-one appointments, careers events and a jobs site featuring hundreds of vacancies targeted at our students.

A dedicated employability team in your academic school or faculty can also give you sector-specific support and advice.

[careerweb.leeds.ac.uk](http://careerweb.leeds.ac.uk)



*“Leeds is one of our biggest campuses for recruitment. The students are independent, resilient and fit perfectly with our vision to employ the leaders of tomorrow.”*

**Amie Bloomfield,  
Senior National Account Manager, P&G**

## Be targeted by top graduate recruiters, including:



Civil Service  
Fast Stream



# Leeds for life

Start preparing for your future from day one of your course with our University-wide initiative, Leeds for Life, the first of its kind in higher education.

Leeds for Life helps you to get the most out of your time at university. You'll have access to lots of opportunities, offered by both the University and Leeds University Union, which will support your personal, professional and intercultural development.

You'll be able to tailor your experiences to suit you and reflect on what you've done and achieved, so you can talk with confidence to potential employers.



## A global network of Leeds graduates

What connects the lead singer of the band Bastille, the co-founder of Propercorn, a Paralympic medallist and the Leader of the UK Labour Party? They all studied at the University of Leeds.

Our graduates go on to achieve great things in industries and professions worldwide – Nobel laureates and newspaper editors, politicians and policymakers, entertainers and entrepreneurs, ambassadors and scientists, faith leaders and Olympians.

Imagine having the support of such a diverse group of successful and talented people all over the world. You'll be able to learn from their experience and expertise through:

- mentoring
- practical careers advice
- talks and presentations
- work placements and scholarships

As a Leeds student you'll be able to tap into one of the biggest alumni communities of any UK university. It's a global network of over 280,000 people in more than 195 countries, who all share a lifelong connection to the University of Leeds. [alumni.leeds.ac.uk](http://alumni.leeds.ac.uk)

## Sound of success.

Robert started out as a presenter on Leeds Student Radio. Since graduating, he's landed his own national radio show with Capital XTRA.

“

*University is about learning and self-development, preparing you for the world beyond education. Leeds helped me do this. We had great guest speakers, industry experts and alumni on campus to give lectures, run workshops and talk to us about career progression. I had access to the Leeds Student Radio studios, allowing me to develop my craft, and my work placements let me build essential industry experience.*

Robert Bruce

University of Leeds graduate, now working at Capital XTRA



# Finding your new home.

---

Choosing a university is also about choosing your new home. You'll have lots of support from us to help you feel safe and at home from day one.





## Choosing your accommodation

Living in University accommodation is a great introduction to student life and a fantastic way to make new friends and feel part of our community.

Most of our accommodation is off campus, close to the city centre or in the popular student areas of Headingley or Hyde Park – within walking distance or on frequent bus routes to the University.

Living with students who are on different courses means you'll make friends and broaden your social circle. You'll also have plenty of opportunities to get involved, as each residence has a student-led Hall Exec. They organise a variety of events throughout the year, from film nights and day trips to end-of-term balls.

### There are other benefits to living in our accommodation too:

- a range of residences to suit different budgets – from modern, purpose-built developments to more traditional buildings, catered or self-catered
- a large number of en suite rooms (or the chance to share a bathroom to keep costs down)
- no hidden extras to pay – wi-fi, utility bills, laundry facilities or credits, basic contents insurance cover and Edge Club gym and sports membership are all included in your rent
- secure cycle storage
- additional facilities at many sites, including common rooms with TVs, pool tables and communal study areas – some residences even have their own gym
- a safe environment, with our 24-hour security service
- a dedicated team, Residence Life, which offers advice and support, as well as regular events to make sure you feel at home
- an efficient, responsive maintenance service

We'll do our very best to give you your preferred accommodation but, like other popular universities in the UK, we can't guarantee this for everyone.

### Accessible accommodation

If you have a physical, hearing or visual impairment, we can offer adapted accommodation on and off campus. When you're starting to think about where you might live, get in touch so we can help you find somewhere that best suits your needs.



## Explore our accommodation.

We've got an impressive range of University accommodation, so there's somewhere for everyone.

Our virtual tours will help you get a feel for what our residences are like. You'll also see what some of our students think about living in University accommodation.  
[accommodation.leeds.ac.uk/virtualaccommodationtours](https://accommodation.leeds.ac.uk/virtualaccommodationtours)

Our annual viewing day is when all our undergraduate residences are open throughout the day to help you decide which accommodation is right for you. You'll get to see the facilities and talk to students and staff, who will show you around and answer your questions.

Check our website for the latest information about the next viewing day.  
[accommodation.leeds.ac.uk](https://accommodation.leeds.ac.uk)



## Our residences at a glance

As a northern city, the cost of living in Leeds can be cheaper than in other cities. But how much you need to budget depends on lots of things, including the type of accommodation you choose. On or off campus, catered or self-catered, en suite or shared bathroom – there are lots of different options.

University accommodation prices for 2022 entry were not available at the time of printing. The prices for 2021 entry range from £100 to £216 a week. Don't forget that utility bills, use of a washing machine or laundry credits, basic contents insurance cover, wi-fi and Edge Club gym and sports membership are all included in your rent.

**We guarantee\* an offer of single University accommodation for your first year (and for all years for international undergraduates), as long as you apply by the deadline.**

\*Restrictions apply relating to deadlines, residence and academic offer status. Find out more about our guarantee at [accommodation.leeds.ac.uk](https://accommodation.leeds.ac.uk)

Accommodation	Catered/ self-catered	En suite available	Number of beds	Contract length	Location
Price band A (under £125 per week)*					
Lupton Residences	Self-catered	No	640	42 weeks	Off campus
Montague Burton	Self-catered	No	416	42 weeks	Off campus
North Hill Court	Self-catered	No	76	42 weeks	Off campus
Oxley Residences	Self-catered	Yes	443	42 weeks	Off campus
Price band B (£125–£155 per week)*					
Clarence Dock Village	Self-catered	Yes	488	42 weeks	Off campus
Devonshire Hall	Self-catered	Yes	345	42 weeks	Off campus
Henry Price Residences	Self-catered	Yes	355	42 weeks	On campus
James Baillie Park	Self-catered	Yes	563	42 weeks	Off campus
Leodis Residences	Self-catered	Yes	713	42 weeks	Off campus
Sentinel Towers	Self-catered	Yes	243	42 weeks	Off campus
The Tannery	Self-catered	Yes	439	43 weeks	Off campus
Price band C (more than £155 per week)*					
Central Village	Self-catered	Yes	979	43 weeks	Off campus
Charles Morris Hall	Catered/ self-catered	Yes	625	39 weeks	On campus
CitySide	Self-catered	Yes	399	43 weeks	Off campus
Devonshire Hall	Catered	Yes	247	39 weeks	Off campus
Ellerslie Global Residence	Catered	Yes	97	39 weeks	On campus
Lyddon Hall	Catered	Yes	150	39 weeks	On campus
White Rose View	Self-catered	Yes	556	43 weeks	Off campus

\*Prices quoted are for 2021 and are likely to change. Some large rooms will be outside these price bands.



# Wellbeing and support.

Exciting, exhilarating, nerve-racking, daunting – university can be many things. At Leeds you'll have a network of wellbeing and support services dedicated to helping you.





## Support services

From the moment you arrive through to your graduation, there are lots of resources to help and support you every step of the way.

Find out about all of these on our For Students website, so you can get the right help when you need it. You'll find information about money issues, health concerns, disability support and much more. [students.leeds.ac.uk](https://students.leeds.ac.uk)

### Student Services Centre

Once you've started at Leeds, our Student Services Centre can help and advise you on most things – from accommodation and registration to fees and funding, and everything in-between.

### Independent student advice

Leeds University Union offers a professional, confidential help and support service. They can help you with any problems you face in your life as a student – no problem is too small or trivial. Although the team specialises in housing, money and academic concerns, they can support you with anything. All their help is free and completely independent of the University.

[www.luu.org.uk/help-support](https://www.luu.org.uk/help-support)



### Student counselling, wellbeing and mental health support

There may be times when stress, emotional difficulties or upsetting life events make it harder to cope academically or personally.

At Leeds, you can access free professional and confidential counselling, wellbeing and mental health support through groups, workshops, single-session consultations, brief counselling and web-based self-help resources such as Togetherall. If you need longer-term support or treatment, we'll help you find the most appropriate NHS or voluntary sector services.

If you have an existing serious mental health diagnosis, our mental health advisors provide one-to-one support and will work with you to develop an appropriate support plan. They'll also act as an advocate between you and the University and liaise with external referral agencies.

[students.leeds.ac.uk/supportandwellbeing](https://students.leeds.ac.uk/supportandwellbeing)

Leeds University Union engages students in making positive decisions about their health and wellbeing. A team of student ambassadors works with representatives in schools to offer activities that students want – from monthly wellbeing meetups to self-defence classes and stress management workshops. The Union also promotes peer-to-peer support through student-run helplines and online community groups.

[www.luu.org.uk](https://www.luu.org.uk)

### Support for disabled students

If you're a disabled student, we'll work with your academic school and other University services to ensure that we meet your needs and put in place any reasonable adjustments.

Support can include drop-in advice and guidance sessions, modified examination arrangements, extended library loan facilities, transcription services and access to computers with assistive technology. You may need to apply for additional funding to pay for specialist academic-related support and equipment (see page 76). Our experienced staff can advise you on sources of funding and eligibility, and help you fill in any forms.

Don't wait until you start your course to contact us. Get in touch early, so we can discuss your needs and arrange the right support for you before you get here.

[students.leeds.ac.uk/disabledstudents](https://students.leeds.ac.uk/disabledstudents)

### Medical care

Leeds Student Medical Practice is an NHS practice specialising in all aspects of student health and it's close to campus. It has all the usual GP services, plus specialist services such as travel advice and immunisation, contraception and sexual health services, and asthma and diabetes management.

[www.leedsstudentmedicalpractice.co.uk](https://www.leedsstudentmedicalpractice.co.uk)

## Support for mature and part-time students

Coming to university as a mature or part-time student can be a very different experience from arriving directly from school or college, but we're here to help. You're classed as a mature student if you're aged 21 years or over when you start your course.

Get dedicated support from our Lifelong Learning Centre, which provides specialised guidance and advice to mature and part-time students, from pre-application right through to graduation and beyond. Staff will also be on hand to help with any specific challenges such as balancing academic study with family and employment commitments.

Before you start, you can meet staff and other students, see the Library and other facilities, find your way around campus and prepare for the start of your studies. You'll also be invited to social events and drop-in meetings for mature and part-time students throughout the year.

[www.leeds.ac.uk/lifelonglearningsupport](http://www.leeds.ac.uk/lifelonglearningsupport)

## Childcare on campus

If you need childcare, it's available right here on campus. Rated 'Outstanding' by Ofsted, Bright Beginnings Childcare Centre offers places for children between the ages of three months and five years (preschool). There's also a playscheme during school holidays for children aged between three and 11 years.

[www.brightbeginningschildcare.co.uk](http://www.brightbeginningschildcare.co.uk)

## Multifaith campus

There are spaces on campus for prayer and quiet contemplation. If you practise a faith, you can be confident you'll be able to follow your beliefs in Leeds.

The Emmanuel Centre is a place of welcome and friendship, offering support to you while you're here. You can join in with regular events or talk in confidence to one of our chaplains, who have different faith backgrounds.

[students.leeds.ac.uk/prayerandcontemplation](http://students.leeds.ac.uk/prayerandcontemplation)



*"I would say to anyone who is thinking about returning to education, forget about whatever you think you can't do, you can do it, and the support is there."*

**Gary Hinken**



## International student support

We've been welcoming international students for over 100 years, so you can be sure of experienced help and support.

### Before you arrive

Our team of immigration experts can give you free advice on immigration law and requirements. They can also help you with the visa application process.

[www.leeds.ac.uk/immigration](http://www.leeds.ac.uk/immigration)

We'll also provide information and services to help you prepare for travel to the University.

[www.leeds.ac.uk/travel](http://www.leeds.ac.uk/travel)

We hold various virtual and in-country events to give advice on life as an international student in Leeds.

[www.leeds.ac.uk/visitstoyourcountry](http://www.leeds.ac.uk/visitstoyourcountry)

We have offices in China, India, Japan, Malaysia and Nigeria, as well as a global network of representatives who can advise you about studying here.

[www.leeds.ac.uk/meetus](http://www.leeds.ac.uk/meetus)

You can also talk directly to some of our current students about their experiences of studying at Leeds.

[www.leeds.ac.uk/linktoleeds](http://www.leeds.ac.uk/linktoleeds)

### Arriving in Leeds

When you arrive in Leeds, our Welcome team will give you all the information you need to help you settle in during your first few days. We also offer a Meet and Greet service on key dates.

You'll be invited to our international welcome activities, a free programme of useful information sessions and social activities before teaching starts. It's an ideal way to introduce you to British culture and help you make new friends.

[www.leeds.ac.uk/internationalarrival](http://www.leeds.ac.uk/internationalarrival)

Leeds University Union has a number of international student societies. They're a great way to meet other international students and learn about new cultures.

[www.luu.org.uk](http://www.luu.org.uk)

### Ongoing support

The International Student Office will continue to support you throughout your studies to help you make the most of your time in the UK.

[www.leeds.ac.uk/internationalstudents](http://www.leeds.ac.uk/internationalstudents)



# Campus life.

---

You can enjoy the best of both worlds here. Our single-site campus has everything you'd find in a small town and it's just a short walk away from the city centre.

**3rd**  
in the UK for  
sustainable  
impact

Times Higher Education  
Impact Rankings:  
Sustainable Cities and  
Communities 2020



## A global community

Join our friendly and diverse international community of over 38,000 students from more than 170 countries. You'll make friends from across the world and become more globally minded – a great asset to future employers.

Our international outlook will also influence your studies, whether that's through internationally focused research projects or by being taught by staff from all over the world. You could also learn a new language, choose discovery modules with a global focus, or work or study abroad as part of your course.

Our weekly Global Café is a great place to relax with friends and meet people from all around the world. Celebrate the University's diversity during the annual World Unite Festival on campus, or become an intercultural ambassador and create exciting projects on campus and in the local area, bringing together people from different backgrounds to share their cultures. [students.leeds.ac.uk/globalcommunity](https://students.leeds.ac.uk/globalcommunity)



*“The best part about University has been the friends I've made. **You'll never feel alone in Leeds** because your circle of friends can become your family.”*

**Keshav Bansal**



**35th**  
most  
international  
university in  
the world

Times Higher Education  
2020



# Our campus

Immerse yourself in student life at Leeds. Experience the arts, take part in sport and socialise with friends without leaving campus.



Sign for Art sculpture in Beech Grove Plaza



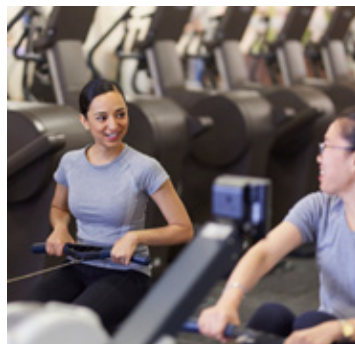
Hugo, our camionnette café, on the main precinct, opposite The Refectory



The Edit Room café in the Edward Boyle Library



Common Ground, a space to relax in Leeds University Union



The gym at The Edge, one of our indoor sports facilities



Learn about growing food in our sustainable garden



The Stanley & Audrey Burton Gallery



Rooftop terrace overlooking the Business School, western campus



## Smokefree campus

For everyone's health and wellbeing we're creating a smokefree campus  
[students.leeds.ac.uk/smokefree](https://students.leeds.ac.uk/smokefree)



## Students' union

Join one of the best and most active students' unions in the country. Their mission is to make sure you love your time at Leeds.

Leeds University Union brings together our student community and is 100% student-led. It's a place where you can meet, work, socialise and relax.

With more than 1,000 student reps, you can be sure your views are heard, whether that's influencing real change at the University or supporting national student campaigns.

Independent help and advice is also available and you can find part-time work through the Union's job shop, Joblink.

### Spaces and places

The Union building is in the middle of campus. You can buy most things there – from everyday groceries to University clothing and stationery. There's even a market selling local produce right outside the Union every Monday in term time.

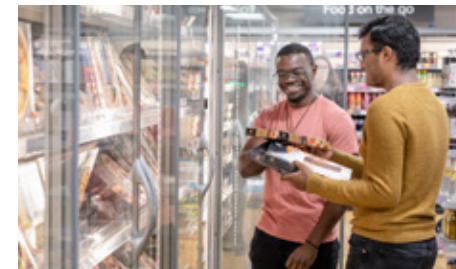
Whether you want to catch up with friends in Common Ground, put your knowledge to the test at a themed quiz night or enjoy a game of Fruity Bingo, there's something for everyone in the Union.

There are cafés, bars and clubs, as well as theatres for student performances, live entertainment, comedy nights and film screenings. If you want to meet up as a society, rehearse for a performance or organise your own event, the spaces in the Union building are completely flexible.

Union venues are also a destination for top bands and artists and the Refectory is where you'll find the main stage for live events and festivals.



More than  
300 clubs  
and societies  
for you to  
choose from



### Get involved

With more than 300 student-led clubs and societies, you'll find like-minded people, whatever your interests. Just about everything is covered, including football, debating, theatre, gaming, dance and photography, and there are plenty of general interest ones too.

Give it a Go sessions are a great way to try something new – there's no pressure to join up afterwards. And if you and your friends want to take part in an activity which doesn't have a club, the Union will help you set one up.

Our students support communities and donate thousands of hours of volunteering. Leeds RAG, the Union's fundraising society, has raised more than £1m for local, national and international charities. Find out more about volunteering opportunities on page 29.  
[www.luu.org.uk](http://www.luu.org.uk)

*“The Union provides lots of opportunities for you to have fun, meet like-minded people and get your voice heard. If things don't quite go to plan, you'll also get all the help you need.”*

**Isobel Walter,  
Union Affairs Officer 2020–2021  
Leeds University Union**



## Sport and fitness

Whether you want to keep fit, play sport socially or compete at a high level, you'll find everything you need at Leeds to keep active and feel your best.

### The Edge, our indoor sports facility, offers:

- 250-station state-of-the-art fitness suite, with the latest Technogym equipment and Sky TV
- 25m eight-lane swimming pool
- sauna and steam room
- squash courts
- strength and conditioning room
- three studios offering a variety of exercise classes during term time and virtual classes on demand
- personal training studio
- climbing wall
- swimming lessons and courses such as climbing, squash, self-defence and strength training

Remember, if you live in University accommodation, you'll automatically get Edge Club gym and sports membership.

[sport.leeds.ac.uk/the-edge](http://sport.leeds.ac.uk/the-edge)

### Outdoor facilities at nearby Sports Park Weetwood and Bodington Playing Fields offer:

- 3G FIFA Quality and World Rugby Regulation 22 pitches
- 3G training areas with six-a-side pitches
- grass pitches for football, rugby, lacrosse, American football and ultimate frisbee
- international-standard hockey pitches
- county-standard cricket pitch
- 1.6km outdoor-lit cycling circuit
- The Brownlee Centre – the UK's first purpose-built triathlon training centre and a British Cycling disability hub

The University Boathouse on the Aire and Calder Navigation Canal gives access to 4km of rowable water.

We also have a dedicated outdoor centre in the Yorkshire Dales, offering adventure-packed trips like hiking, caving, mountain biking and climbing. [sport.leeds.ac.uk/facilities](http://sport.leeds.ac.uk/facilities)



# Do what moves you.

We have more than 70 sports clubs, giving you the chance to represent the University either individually or as part of a team in the BUCS leagues. If you're an elite athlete, our Sport Scholarship programme will support you to achieve both sporting and academic excellence.

Our social leagues are a great way to play competitively against other student or staff teams, while our weekly social sport sessions offer non-competitive fun without regular commitment. The Get Out, Get Active programme gives you the chance to meet new people while exploring Yorkshire.

Develop new skills with our top-quality coaching, officiating and leadership programmes, or get involved in a local or international community sports project.

[sport.leeds.ac.uk/sport](http://sport.leeds.ac.uk/sport)





# A creative and cultural campus.

Whether you want to get involved in performing or sit back and enjoy the show, there are lots of ways you can enjoy the arts.

You'll also be able to take advantage of our unique creative facilities and cultural collections as part of your studies, such as the M&S Company Archive and our two galleries.

Our Cultural Institute offers exciting opportunities to gain practical experience in a variety of cultural and creative organisations. You'll also be introduced to our pioneering research collaborations, which can provide inspiration for your own research and creative projects.

[www.leeds.ac.uk/aroundcampus](http://www.leeds.ac.uk/aroundcampus)



## stage@leeds

We're lucky enough to have our own theatre complex, stage@leeds, which is licensed for the public and offers a range of performances from professional touring companies, as well as showcasing the talent of our students.

## Leeds International Piano Competition

Experience some of the world's most talented young pianists in this competition, held every three years. Performances take place in the University's Great Hall and Leeds Town Hall and are live-streamed, reaching a global audience of millions.

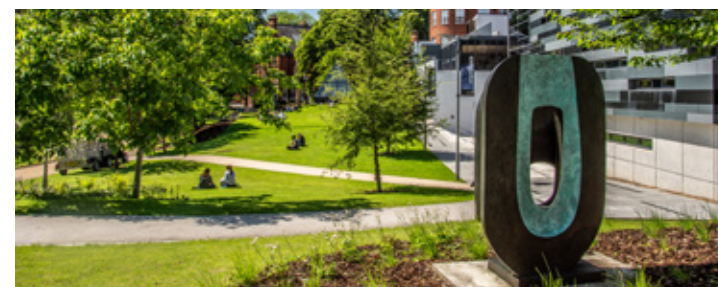
## The Stanley & Audrey Burton Gallery

Our Arts Council England-accredited gallery displays stunning works from the University's art collection, dating from the 17th century to the present day. The Gallery offers innovative art exhibitions throughout the year, including a special exhibition to showcase the work of our most recent art and design graduates.



## Treasures of the Brotherton Gallery

This Gallery displays treasures from the University's world-famous Special Collections. Highlights include a 4,500-year-old Babylonian clay tablet and handwritten material by famous authors, along with medieval manuscripts and rare books from around the globe.



## Public art trail

We've got some must-see pieces of art on campus. This trail guides you around our impressive collection of public artworks, some of which were designed and created by our own students.

## M&S Company Archive

Housed in the striking, purpose-built Michael Marks Building on campus, the living M&S Company Archive provides a fascinating insight into a national institution and a unique research resource for our students.

# City life.

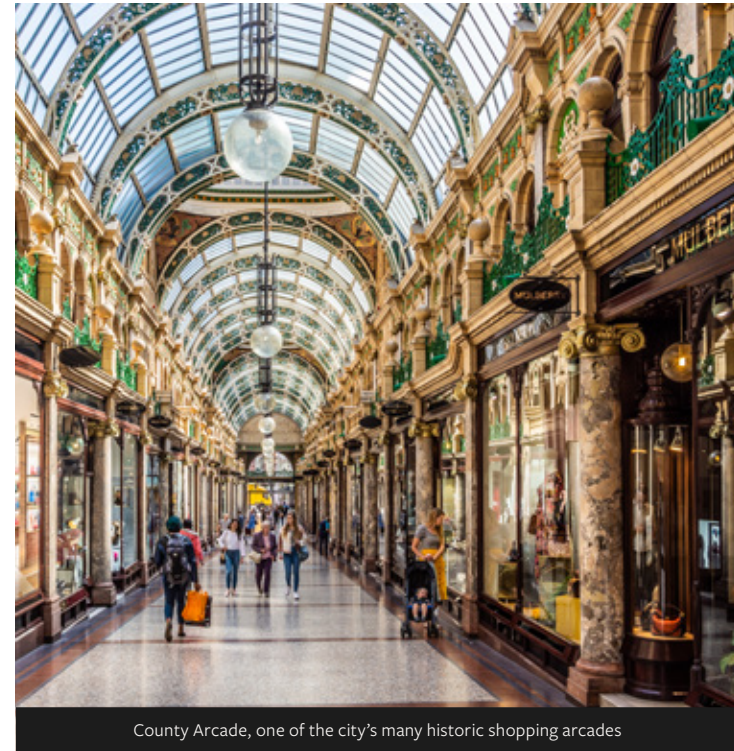
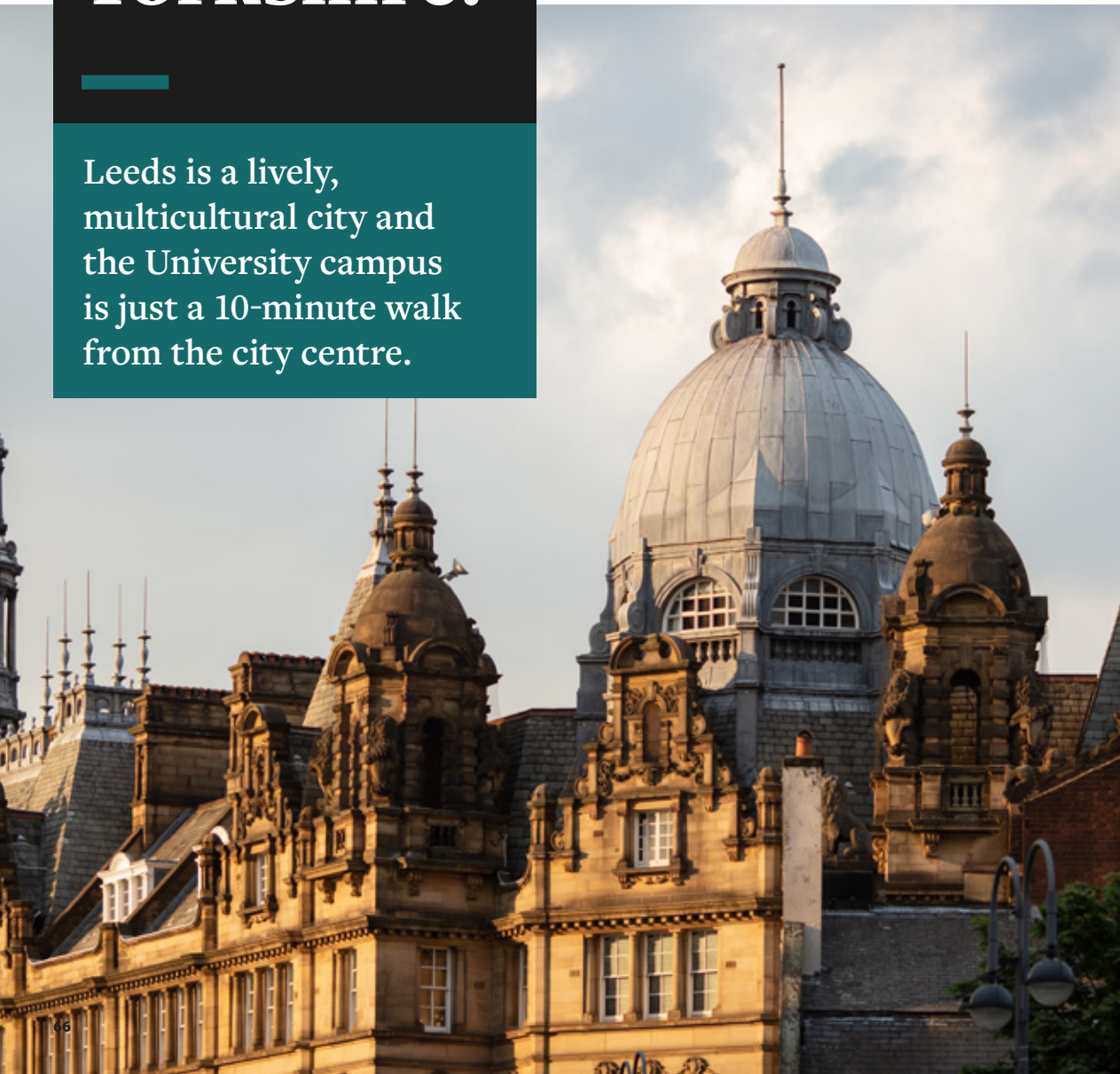
Leeds has one of the largest student communities in the country, making it an exciting place to live and learn. It also has lots of green space and nearby countryside to escape to.



# Leeds and Yorkshire.

Leeds is a lively, multicultural city and the University campus is just a 10-minute walk from the city centre.

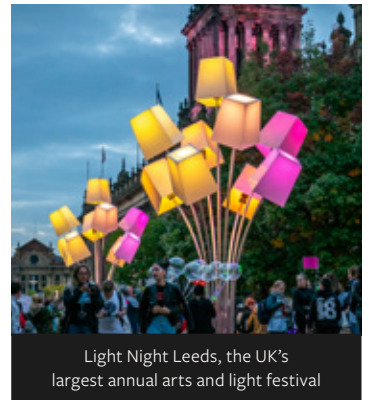
Explore all the great things to do in Leeds at [www.visitleeds.co.uk](http://www.visitleeds.co.uk)



County Arcade, one of the city's many historic shopping arcades



Live at Leeds music festival



Light Night Leeds, the UK's largest annual arts and light festival



Trinity Kitchen, a mix of restaurants and street food vans



The Royal Armouries, a national museum of arms and armour, with live jousting displays



Victoria Leeds shopping centre



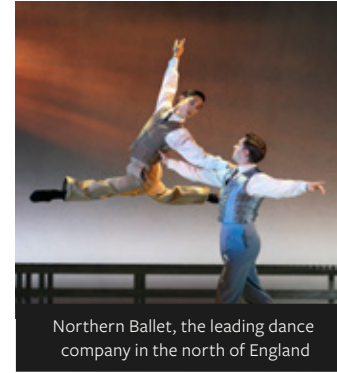
Leeds Central Library and Leeds Art Gallery



Discover some of the city's unique street art



Kirkgate Market, one of Europe's biggest indoor markets



Northern Ballet, the leading dance company in the north of England



Leeds city centre - one of the UK's Best Places to Live

The Sunday Times 2019



The famous Emerald Headingley Stadium



Taking a rowing boat out on the river is a great way to see Knaresborough



Kirkstall Abbey, ruins of an 800-year-old Cistercian monastery



Scarborough, a seaside resort on the East coast



Leeds water taxi on the River Aire



Thornton's Arcade is Leeds' oldest covered shopping street



Chevin Forest Park, overlooking the market town of Otley

“

*The campus is really close to the city centre and I like how handy everything is. I can walk into town to grab some shopping or meet some friends for a bite to eat. The Calls is one of my favourite places, as there are loads of lively riverside bars and restaurants to experience. I love being outdoors and exploring different hikes and trails – you can be in the Yorkshire countryside in less than 30 minutes, which is fantastic.*

Rohan Cheerala

Pictured with friends on Calls Landing by the River Aire

# 24/7 city.

Rohan had heard lots of things about Leeds being one of the best student cities. He hasn't been disappointed.



## Next steps.

---

Choosing the right university is an important decision and an investment in your future.



## Costs to consider

There are two main costs to consider at university: tuition fees and your living costs.

### Tuition fees for UK students

The tuition fees for 2022 should be confirmed by autumn 2021 and will be available at [www.leeds.ac.uk/undergraduatefees](http://www.leeds.ac.uk/undergraduatefees)

If you spend a year on work placement or studying abroad (see page 26 and page 30), your tuition fees will be substantially reduced during that year.

If you're considering one of our foundation years (see page 89), you may qualify for a partial tuition fee scholarship, depending on your annual household income.

If you intend to study part time, your tuition fee will be adjusted based on the number of credits studied each year.

You can apply for a Tuition Fee Loan from the government to cover the full cost of your course, or you can pay your tuition fees in full or in instalments.

We also offer financial support, bursaries and scholarships, so the best students can benefit from a Leeds education, regardless of background. See page 76 for more information on student funding.



### Tuition fees for international students

Tuition fees for full-time international undergraduate students vary depending on the course you choose. The tuition fees for 2022 should be confirmed by autumn 2021 and will be available on individual course pages at [courses.leeds.ac.uk](http://courses.leeds.ac.uk)

You may be able to apply for funding from your own government, independent sponsors or from other award-paying bodies. See page 77 for more information on the University scholarships you may be eligible to apply for.

### Living costs

Living costs include things like the cost of your accommodation, food, transport and social activities. Leeds is a relatively low-cost city compared to many areas of the UK, but you still need to budget carefully.

Leeds University Union offers lots of advice on money, budgeting and the cost of living in Leeds.

[www.luu.org.uk](http://www.luu.org.uk)

If you need to top up your income during your studies, you can find part-time work with a student-friendly and trusted employer through Leeds University Union's Joblink (see page 58). Working not only puts money in your pocket, it can also help you gain valuable experience.

If you're an international student, you should check whether your visa allows you to work part time. When you apply for your visa, you'll have to prove that you can support yourself financially while in the UK.

[www.leeds.ac.uk/immigration](http://www.leeds.ac.uk/immigration)

# Student funding

Being able to finance your studies is an important factor in your decision to go to university. There are different kinds of financial support that you may be entitled to, from the UK government and from the University of Leeds, although this depends on your home country.

## Funding from the government for UK students

### Tuition Fee Loan

This loan has been designed so you don't have to pay for your degree up front.

If you're a UK student studying for your first degree, or a second degree in nursing, midwifery or an allied health profession (preregistration), you can apply for a Tuition Fee Loan from the government to cover the full cost of your course, including any fees for a year spent in industry or studying abroad.

If you study medicine or dentistry, you're entitled to the same Tuition Fee Loan for the first four years of eligible study. If you normally live in the UK, you should contact Student Finance England (or the equivalent organisation) about the funding arrangements for your fifth and subsequent years.

Get up-to-date information at [www.gov.uk/student-finance](http://www.gov.uk/student-finance) [www.gov.uk/nhs-bursaries](http://www.gov.uk/nhs-bursaries)

### Maintenance Loan

If you're an eligible UK student, you'll be able to get a Maintenance Loan to help with living costs, which is paid into your bank account at the start of each term. The loan is repayable and the amount you'll receive depends on your annual household income, where your permanent home is and where you choose to live while you're studying.

Funding arrangements for students starting university in 2022 were under review by the UK government at the time of printing, so keep checking for updates at [www.gov.uk/student-finance](http://www.gov.uk/student-finance)

You can also check our website for updates at [www.leeds.ac.uk/governmentsupport](http://www.leeds.ac.uk/governmentsupport)

### Applying for government funding

You can apply for government funding online from early 2022. You don't need a confirmed place at university to complete the application and you should apply as soon as possible to make sure your funding is in place for the start of your course.

If you're from England, you'll need to apply for government funding through Student Finance England, which is responsible for assessing the funding available to you.

The government support package for students from elsewhere in the UK may differ. Find out more at [www.gov.uk/student-finance](http://www.gov.uk/student-finance)

Independent advice is available at [www.moneysavingexpert.com](http://www.moneysavingexpert.com)

### Paying back your student loans

Tuition Fee Loans and Maintenance Loans from the government are repayable. You don't start paying them back until the April after you graduate (or the April four years after your course started if you study part time) and only if you're earning over the repayment threshold.

The amount you repay depends on how much you earn and where you live. The repayment process is simple for most people, as the money is usually deducted from your salary through the tax system.

For the most up-to-date information visit [www.gov.uk/repaying-your-student-loan](http://www.gov.uk/repaying-your-student-loan)

### Funding for disabled students

If you're a disabled student, you may be eligible to apply for a Disabled Students' Allowance from Student Finance England (or the equivalent organisation) to pay for specialist academic-related support and equipment. You can get this extra funding on top of other student finance. It doesn't have to be paid back and it's not means-tested. Our Disability Services team can advise you on sources of funding and eligibility. [students.leeds.ac.uk/disabledstudentsfunding](http://students.leeds.ac.uk/disabledstudentsfunding)



*“I came to Leeds with a Pathways for Potential Scholarship. It meant I could concentrate on studying and buy the books I needed without having to wait for my student finance.”*

**Naomi Maher**

## Higher and degree apprenticeship students

If you choose a higher or degree apprenticeship, you'll receive a salary from your employer and your fees will be paid on your behalf directly to the University. This means you won't be eligible for student loans from the government or University financial support.

[www.officeforstudents.org.uk/apprenticefinance](http://www.officeforstudents.org.uk/apprenticefinance)

## Funding from the University

If you have the talent, drive and potential to succeed, we want to make sure you can study with us, whatever your financial circumstances. We offer one of the most generous funding packages in the country and, best of all, any funding you receive from us does not need to be repaid.

### Leeds Financial Support

If you're a UK student, you may be eligible to receive non-repayable financial support from us to help with the costs of being at university, which is linked to annual household income. If your household income is above the threshold, you may still be eligible for a scholarship from us.

For full-time courses starting in September 2021, students with a household income of up to £36,000 (or £42,875 for part-time or foundation year courses) could receive financial help from us. At the time of printing, our funding arrangements for 2022 had not been finalised. Keep checking our website for the latest updates at [www.leeds.ac.uk/universitysupport](http://www.leeds.ac.uk/universitysupport)

### Scholarships

If you're a UK or international student, you may be eligible to apply for one of our prestigious scholarships to help with the costs of being at university. Many are based on academic achievement in certain subject areas. Sports scholarships are also available for elite athletes.

If you're a UK student, you may also be eligible to apply for a means-tested scholarship, designed to help students who are most in need of support. Eligibility depends on your household income and personal circumstances. If you apply through the Access to Leeds scheme (see page 82), we'll give you additional consideration for certain undergraduate means-tested scholarships.

You can contact the admissions tutor for your course to find out if you're eligible to apply for a scholarship based on academic achievement. A full list of scholarships, including information on eligibility criteria, deadlines and how to apply, is also available online. New scholarships are added throughout the year, so keep checking for updates at [www.leeds.ac.uk/undergraduatefunding](http://www.leeds.ac.uk/undergraduatefunding)



# Applying to study here

## Our entry requirements

All our undergraduate courses have their own entry requirements and unless stated, A-levels in general studies and critical thinking are not accepted. For the most up-to-date information visit [courses.leeds.ac.uk](https://www.leeds.ac.uk/courses)

Entry requirements in this prospectus are expressed in terms of the UK A-level system and the International Baccalaureate.

Admissions tutors at Leeds welcome applications from students with equivalent qualifications. We've listed the requirements for some common qualifications below, although specific subjects may be required for your course. You can contact the relevant admissions team before you apply to check that your qualifications will be considered. Find out more at [courses.leeds.ac.uk](https://www.leeds.ac.uk/courses)

A-level	IB Diploma	BTEC Extended Diploma	Cambridge Pre-U	Scottish Advanced Highers (AH) and Highers	Irish Highers	Access to Higher Education
A*AA	36 points overall (18–17 at higher level)	D*D*D* – DDM Some courses may also require an A-level	D2 D2 M2 or D2 D3 M1	AA at AH and AAABB or A at AH and AAAAB For non-AH applicants: AAAAAA	A1A1AAAA/ H1H1H2H2H2H2	60 credits overall, with 45 credits at level 3, including 30 credits at Distinction and 15 at Merit
AAA	35 points overall (18–17 at higher level)		D3 D3 M2 or D2 M1 M1 or D2 D3 M3	AA at AH and AABBB or A at AH and AAABB For non-AH applicants: AAAAAA	AAAAAA/ H2H2H2H2H2H2	
AAB	35 points overall (16 at higher level)		D2 M2 M2 or D3 M1 M2 or D2 M1 M3	AB at AH and AABBB or A at AH and AABBB For non-AH applicants: AAAABB	AAAABB/ H2H2H2H2H3H3	
ABB	34 points overall (16 at higher level)		M1 M1 M2 or D3 M2 M3	BB at AH and AABBB or B at AH and AAABB For non-AH applicants: AABBBB	AAABBB/ H2H2H2H3H3H3	
BBB	34 points overall (15 at higher level)		M2 M2 M2	BB at AH and BBBBB or B at AH and BBBBB For non-AH applicants: BBBBBB	AABBBB/ H2H2H3H3H3H3	

## BTEC qualifications

You'll need to let us know if your BTEC qualification is part of the QCF (Qualifications and Credit Framework) or RQF (Regulated Qualifications Framework), as this might affect the entry requirements you need to meet. You can let us know when you apply. If you're not sure, just ask your current school or college.

## Literacy and numeracy requirements

You need to have a minimum GCSE grade C/4 (or equivalent) in English, although some courses require a higher grade.

Some courses require a minimum GCSE mathematics grade or equivalent. You can check the full entry requirements for your course at [courses.leeds.ac.uk](https://www.leeds.ac.uk/courses)

If you have a GCSE grade C/4 in mathematics but the course you're applying for requires a higher grade, we'll accept the Core Maths qualification, although the grade required will depend on your course.

If you don't meet the entry requirements for your chosen course, see page 82 for information about our Alternative Entry Scheme.

## Science A-levels in England

If you're taking science A-levels in England, you'll usually need to achieve a pass in the practical assessment.

## Project-based qualifications

The Extended Project Qualification (EPQ) or the International Project Qualification (IPQ) give you the chance to develop important research and academic skills, helping you prepare for university study. Individual academic schools at Leeds will decide whether they'll use either of these as part of their offer.

We encourage you to provide further information on your project in your personal statement and, if applicable, at interview. In some cases, admissions tutors may make an alternative offer to an applicant that includes successful completion of one of these projects – for example, AAB at A-level plus A in the EPQ or IPQ instead of AAA at A-level. The admissions team in the relevant academic school will be able to clarify this or you can visit [courses.leeds.ac.uk](https://www.leeds.ac.uk/courses)

## Entry requirements for international students

You'll find information about our entry requirements, including equivalent level 3 qualifications, at [www.leeds.ac.uk/internationalqualifications](https://www.leeds.ac.uk/internationalqualifications)

## International Foundation Year options

If you're not able to gain the equivalent of A-level qualifications in your own country, you should consider applying for one of our International Foundation Year options (see page 89). [www.leeds.ac.uk/internationalfoundation](https://www.leeds.ac.uk/internationalfoundation)

## English language requirements

If English is not your first language, you'll need to gain an English language qualification. Many qualifications are acceptable. Typical examples include GCSE or O-level English at minimum grade C/4, or IELTS 6.0 (with at least 5.5 in each component of listening, reading, speaking and writing).

English language requirements are subject to change and vary between courses, so you'll need to check the level needed for your course. If you need to improve your academic English language level before you start your course, you may want to consider the undergraduate pre-session English course provided by our Language Centre.

[www.leeds.ac.uk/ugpreessional](https://www.leeds.ac.uk/ugpreessional)

## Visa and immigration requirements

If you're an international student, you'll need to hold an appropriate visa to study in the UK. You'll find specialist immigration advice on our website, which will guide you through the visa application process, at [www.leeds.ac.uk/studentvisa](https://www.leeds.ac.uk/studentvisa)

You'll find the latest updates on Brexit at [www.leeds.ac.uk/brexit](https://www.leeds.ac.uk/brexit)

Get the most up-to-date entry requirements for our courses at [courses.leeds.ac.uk](https://www.leeds.ac.uk/courses)



## How to apply

Depending on the type of course you choose, there are different ways to apply to the University of Leeds.

You'll find our latest admissions policy at [www.leeds.ac.uk/howtoapply](http://www.leeds.ac.uk/howtoapply)

### UCAS applications

For full-time courses starting in September 2022, except International Foundation Years, you apply online through UCAS from September 2021.

The deadline for applications is 15 January 2022, with the exception of Gateway Year to Medicine (A101), Medicine and Surgery (A100) and Dental Surgery, Oral Science (A200), where the closing date is 15 October 2021.

[www.ucas.com/students](http://www.ucas.com/students)

UCAS will acknowledge your application and let you know the outcome. Late applications may be considered but you should check with the relevant admissions team before making a late application.

If you're an international student, you also apply through UCAS. We have a network of international representatives who can help you with your application.

[www.leeds.ac.uk/internationalstudents](http://www.leeds.ac.uk/internationalstudents)



### Writing your personal statement

Your personal statement is an important part of your UCAS application and it's your chance to stand out from the crowd. Take a look at our top tips to help get you started at

[www.leeds.ac.uk/personalstatement](http://www.leeds.ac.uk/personalstatement)

### Post-applicant experience

If you apply through UCAS, you may be invited to a post-applicant experience or interview before you receive or accept an offer. These are really important, as you'll learn more about your course and chat to academic staff and students about life at Leeds. Find out more about visiting campus on page 84.

### Taking a year out

Most of our courses allow you to defer your entry for a year. You can check the admissions policy for your chosen course at [courses.leeds.ac.uk](http://courses.leeds.ac.uk)

Find out how to defer your entry at [www.ucas.com/deferred-entry](http://www.ucas.com/deferred-entry)

### Receiving an offer

We make offers based on three A-levels or equivalent. You won't be disadvantaged when you apply to study at the University of Leeds if you don't have AS-level results.

Offers are based on the information you provide in your UCAS application, including your personal statement and reference.



### Mature and part-time students

You apply directly to us if you choose to study one of our part-time courses.

If you're a mature student or want to study part time, the Lifelong Learning Centre offers a free, confidential and impartial pre-entry guidance service. Our experienced staff can also talk to you about how you might meet the entry criteria and what support may be available to you.

[www.leeds.ac.uk/lifelonglearningadvice](http://www.leeds.ac.uk/lifelonglearningadvice)

### International Foundation Year options

You do not apply through UCAS for these courses, you apply directly to the course provider. Find out more on page 89 and at

[www.leeds.ac.uk/internationalfoundation](http://www.leeds.ac.uk/internationalfoundation)

## Alternative admissions

We know that grades alone can't tell us everything about your abilities. If you have the potential and ambition to succeed at Leeds, we'll do all we can to support you.

### Access to Leeds scheme

Access to Leeds is our widening access scheme. It guarantees special consideration if your personal circumstances have affected your ability to show talent and potential through grades alone.

If you're eligible for the scheme and you receive a standard offer for your chosen course, you'll also receive an Access to Leeds offer, typically two A-level grades (or equivalent) below the standard offer. To meet the requirements of your Access to Leeds offer, you'll need to make the University of Leeds your firm choice and successfully complete the online Access to Leeds module, which will help you prepare for University study.

You can apply to the scheme as long as you're studying a full-time course, living permanently in the UK and you meet the eligibility criteria. Check your eligibility and find out more at [www.leeds.ac.uk/accesstoleeds](http://www.leeds.ac.uk/accesstoleeds)

### Widening participation

If you're not eligible for Access to Leeds but you live in a neighbourhood where there is low participation in higher education, you'll receive a lower offer, equivalent to one grade below the published entry requirement for your course. You don't need to apply, as this lower offer will be processed with your UCAS application. Find out more and check if you're eligible at [www.leeds.ac.uk/alternativeadmissions](http://www.leeds.ac.uk/alternativeadmissions)

### Alternative Entry Scheme

If you don't have the formal qualifications for immediate entry to a degree course, you may be able to apply for our Alternative Entry Scheme, which takes into account your work and life experience. The scheme only applies to certain degrees. Find out more at [www.leeds.ac.uk/alternativeadmissions](http://www.leeds.ac.uk/alternativeadmissions)

# Life changing.

“

*The University was there for me even before I started my course, which really settled my nerves and helped me understand more about studying for a degree. I joined Leeds through the Access to Leeds scheme and found the welcome events really useful. They were run by people who had similar backgrounds to me, so they knew exactly how I was feeling. The whole experience has been massive for my self-confidence.*

**George Hobley**

Pictured studying with friends in the University's Laidlaw Library

Going to university wasn't always on the cards for George but the support he got from Leeds has helped him to succeed in his studies.



# Discover more about our campus.

There are lots of ways  
you can get a feel for  
our campus and for  
university life at Leeds.

## University open days

University open days are designed to help you decide which universities to apply to.

Our open days are a great opportunity for you to find out more about the courses we offer and hear directly from our academic staff, admissions teams and students.

Find out about our next open days at [www.leeds.ac.uk/opendays](http://www.leeds.ac.uk/opendays)

## Open days 2021

Find out about our next  
open day events at

[www.leeds.ac.uk/  
opendays](http://www.leeds.ac.uk/opendays)



## Campus tours

You can experience our campus from anywhere in the world with our 360° virtual tour.

[virtualcampustour.leeds.ac.uk](http://virtualcampustour.leeds.ac.uk)

On-campus tours are usually available throughout the academic year. You'll be guided by one of our current students, so there'll be plenty of opportunities to ask questions about life at Leeds. There's also a self-guided tour that you can download from our website.

You can visit us at any time but University buildings are not normally open at weekends. If there's a particular academic department you'd like to see during your visit, you should arrange this directly with them in advance.

[www.leeds.ac.uk/visitus](http://www.leeds.ac.uk/visitus)

## Explore our accommodation

Get a feel for what our residences are like with our virtual tours.

[accommodation.leeds.ac.uk/  
virtualaccommodationtours](http://accommodation.leeds.ac.uk/virtualaccommodationtours)

Our annual viewing day is when all our undergraduate residences are open throughout the day to help you decide which accommodation is right for you. You'll get to see the facilities and talk to students and staff, who will show you around and answer your questions.

Check our website for the latest information about the next viewing day at [accommodation.leeds.ac.uk](http://accommodation.leeds.ac.uk)



# Find your course.

---

Our courses are designed to offer flexible study options and alternative routes for those looking to return to study.

## IMPORTANT INFORMATION

Information provided by the University, such as in presentations, University brochures and on the University website, is accurate at the time of first disclosure. However, courses, University services and content of publications remain subject to change. Changes may be necessary to comply with the requirements of accrediting bodies or to keep courses contemporary through updating practices or areas of study. Circumstances may arise outside the reasonable control of the University leading to required changes. Such circumstances include industrial action, unexpected student numbers, significant staff illness (where a course is reliant upon a person's expertise), unexpected lack of funding, severe weather, fire, civil disorder, political unrest, government restrictions and serious concern with regard to the transmission of serious illness making a course unsafe to deliver. After a student has taken up a place with the University, the University will look to give early notification of any changes and try to minimise their impact, offering suitable alternative arrangements or forms of compensation where it believes there is a fair case to do so. The latest key information on courses, entry requirements and fees can be found at [courses.leeds.ac.uk](https://www.leeds.ac.uk/courses). Please check this website before making any decisions.



## Course options

### Single honours courses

Our undergraduate single honours courses allow you to focus in depth on one main subject, but most of these courses also include the option to take discovery modules (see page 18).

Some of our degree courses are offered as Integrated Masters – you undertake three years of undergraduate study, with the fourth year taught at postgraduate level, converting your undergraduate degree to a postgraduate one. You may also be able to spend a year in industry or studying abroad, which would mean extending your degree by a year. You may need higher qualifications to apply for these courses, so check our website at [courses.leeds.ac.uk](https://www.leeds.ac.uk/courses)

### Joint honours courses

If you want to study more than one subject in depth, our joint honours courses offer exciting combinations of two subjects in one degree.

Studying a joint honours course doesn't mean more work. You'll study the same number of credits as a single honours student, but just take fewer modules in each of the subjects. You'll also carry out your own final-year research project as single honours students do.

Joint honours courses vary in length, depending on which you choose. All courses that include a modern foreign language are either four or five years long, as you'll spend time abroad as part of your course. Other courses normally last three years, unless you choose to spend an additional year working or studying abroad (see page 26 and page 30).

**There are a small number of subjects that can only be studied as joint honours courses:**

- classical literature
- comparative literature
- film studies
- history and philosophy of science
- Portuguese
- Russian

For up-to-date course information and all the subject combinations you can study visit [courses.leeds.ac.uk](https://www.leeds.ac.uk/courses)

### Part-time study

If you're a part-time student, you could choose one of our degrees in a professionally related discipline.

These courses include Professional Studies (also available full time), and part-time degrees in Business Management and Leadership, Child and Family Studies, and Learning and Teaching. They're designed so that contact time is clustered, making it possible for study to be combined with work or family commitments.

If you're an international student and need a visa to study in the UK, you won't be able to study a part-time course.

Find out more about part-time courses at [www.leeds.ac.uk/lifelonglearning](https://www.leeds.ac.uk/lifelonglearning)

## Foundation years

A foundation year is an extra year of study at the start of a university course. If you don't meet the typical entry requirements for your chosen course, a foundation year will prepare you for undergraduate study at Leeds.

### Foundation years for UK residents

These foundation year courses help you develop the skills and knowledge you need to progress to one of our standard degree courses.

We offer a number of foundation years in a range of subject areas.

[www.leeds.ac.uk/foundation](https://www.leeds.ac.uk/foundation)

### International foundation years

If you're an international student and your qualifications are not equivalent to UK A-levels, there are different options for studying an International Foundation Year.

[www.leeds.ac.uk/internationalfoundation](https://www.leeds.ac.uk/internationalfoundation)

**For information on how to apply to any of our courses, see [page 80](#).**

### University of Leeds integrated International Foundation Year

Our integrated International Foundation Year is a four-year Bachelor degree, meaning you can apply for a visa to cover the full length of your undergraduate studies.

It begins with the International Foundation Year, which prepares you for entry to one of our undergraduate degrees. It's a popular course, combining study skills with academic subjects relevant to your chosen course.

On successful completion of the initial year, you can progress automatically to one of more than 150 selected undergraduate degree courses in a range of subjects. Check our website to see if the University's International Foundation Year is available for your chosen course at

[www.leeds.ac.uk/internationalfoundation](https://www.leeds.ac.uk/internationalfoundation)

The course starts in September each year and, because it's run by us and based on our campus, you'll be taught by our academic staff and you'll be able to use all our student facilities.

### Leeds International Study Centre International Foundation Year

Alternatively, you could consider the Leeds International Study Centre's International Foundation Year, based at Leeds Beckett University. Delivered by Study Group, this course will also help you to develop the skills and knowledge you need to progress to one of our undergraduate degrees, with start dates in September and January.

### NCUK

If you want to stay in your home country to complete your foundation year studies, the University of Leeds is an owner member of NCUK, which delivers International Foundation Years at teaching centres in countries worldwide.



# The campus and the city.

Our campus is a short, 10-minute walk from the city centre and all its attractions and amenities, including theatres, bars, restaurants, and bus and train stations.

[www.leeds.ac.uk/citylife](http://www.leeds.ac.uk/citylife)

As well as excellent bus and train services, Leeds Bradford Airport is just 30 minutes away. Full details of how to get here by train, bus, car and air are available at

[www.leeds.ac.uk/howtofindus](http://www.leeds.ac.uk/howtofindus)

Leeds is at the heart of the UK, well connected by road, rail, and air.



City	Distance	Shortest travel time (by train)
York	24 miles	21 minutes
Manchester	45 miles	47 minutes
Newcastle	102 miles	1 hour 20 minutes
Birmingham	115 miles	1 hour 46 minutes
London (King's Cross)	194 miles	1 hour 59 minutes
Edinburgh	221 miles	2 hours 50 minutes



Follow us on Instagram [@universityofleeds](https://www.instagram.com/universityofleeds)



This prospectus was printed in February 2021 and some of the information it contains may have changed. For the most up-to-date information about our undergraduate courses, visit [courses.leeds.ac.uk](https://courses.leeds.ac.uk)

#### Photo credits

Page 13 bottom left: *Ian Potten*

Page 13 bottom right: *Documentation Center of Cambodia*

Page 69 top left: *Northern Ballet dancers in The Great Gatsby, Emma Kauldhar*

#### Alternative formats

If you require any of the information in this prospectus in an alternative format, eg Braille, large print or audio, email [disability@leeds.ac.uk](mailto:disability@leeds.ac.uk)





**UNIVERSITY OF LEEDS**

Admissions Enquiries

University of Leeds

Leeds, LS2 9JT

UK

**[study@leeds.ac.uk](mailto:study@leeds.ac.uk)**

**[www.leeds.ac.uk/undergraduate](http://www.leeds.ac.uk/undergraduate)**