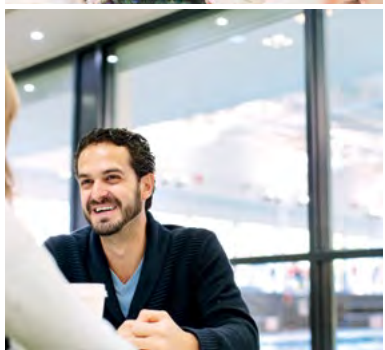




UNIVERSITY OF LEEDS

POSTGRADUATE  
DEGREES  
2015

INSPIRING  
MINDS



LEEDS CITY CENTRE



TOP 10 UNIVERSITY FOR RESEARCH POWER IN THE UK (RAE 2008)//  
**TOP 100 UNIVERSITY IN THE WORLD (QS WORLD UNIVERSITY RANKINGS 2013)**//OVER 30,000 STUDENTS FROM 147 DIFFERENT COUNTRIES//  
**ONE SINGLE CAMPUS, JUST 10 MINUTES WALK FROM THE CITY CENTRE**



## WELCOME TO LEEDS

Your postgraduate study is a great investment and it's vital that you choose the right course and university for you.

At Leeds, we provide an inspirational academic experience. You will be taught by experts who are at the forefront of their subject and who will bring up-to-date research and thinking into their teaching. They share your passion for the subject, they will challenge you and encourage you to explore, question and discover.

Whether you want to deepen your knowledge of a subject, enhance your career opportunities or take a new direction, the University of Leeds has a postgraduate course to suit you.

This prospectus provides information on the range of courses that are available, the specialist services that we offer, what our students think, and much more to help you decide whether Leeds is right for you.

For more information, please contact us using the email addresses listed in this prospectus.

To find out when a University of Leeds representative will be visiting your country go to [www.leeds.ac.uk/visistoyourcountry](http://www.leeds.ac.uk/visistoyourcountry)

Better still, come and visit us to get a feel for life on campus.

Postgraduate open day  
Friday 6 February 2015  
[www.leeds.ac.uk/pgopenday](http://www.leeds.ac.uk/pgopenday)

You could also meet us at a Postgraduate Study Fair which are held throughout the UK  
[www.leeds.ac.uk/pg\\_recruitment\\_fairs](http://www.leeds.ac.uk/pg_recruitment_fairs)

# CONTENTS

Why Leeds	6
An international University	13
Research and teaching excellence	16
Preparing for your next step	22
• Careers Centre	24
• Enterprise at Leeds	24
• Leeds for Life	28
• Our graduates	28
Scholarships, tuition fees and living costs	30
Entry requirements and how to apply	37
The Language Centre	42
Campus life	46
Accommodation	55
City life	58
Our courses	<a href="#">Click here</a>
Maps	64

Whilst the University endeavours to ensure that the information contained in this brochure is accurate at the date of publication the University does not accept liability for any inaccuracies contained within it. Where circumstances change outside the reasonable control of the University, the University reserves the right to change or cancel parts of, or entire, programmes of study or services at any time without liability, even after students have registered at the University. Circumstances outside of the University's reasonable control include, industrial action, over or under demand from students, staff illness, lack of funding, severe weather, fire, civil disorder, political unrest, government restrictions and concern with regard to the transmission of serious illness. The University's contract with its students does not confer third-party benefits for the purposes of the Contract (Rights of Third Parties) Act 1999.



## WHY LEEDS

Established in 1904, the University of Leeds is one of the UK's largest universities, world famous for its teaching and research and located in the heart of a vibrant, affordable and student-friendly city.



### Academic excellence

As a member of the prestigious Russell Group of 24 research-intensive universities and in the top 100 universities in the world (*QS World University Rankings 2013*), we can offer you a truly excellent academic experience.

Internationally recognised as a centre of excellence in a wide range of disciplines, we are known for the quality of our postgraduate teaching and research. We have more than 5,000 postgraduate students from 147 countries completing Masters and postgraduate diplomas, and over 2,300 research postgraduates. Our students enjoy the benefits of our outstanding resources, including one of the country's leading academic research libraries, a specialist Language Centre and state-of-the-art laboratories. In the most recent Research Assessment Exercise (which assesses the quality of research in universities and colleges in the UK) more than half our schools were ranked in the top 10 in the country, including Electronic and Electrical Engineering (ranked the best in the country), Italian, English, Food Science and Education, to name just a few. An incredible 61% of our research was judged to be 'world leading' or 'internationally excellent', with a further 32.5% of 'national importance'.

### Inspirational teaching

Our excellent teaching has a worldwide reputation. It will equip you with expert subject knowledge, based on inspired research, as well as the vital skills employers are looking for in this competitive job market. Our graduates are highly sought after and enjoy successful careers across hundreds of different professions.

Integrating research with learning and teaching is at the heart of our approach. We have more National Teaching Fellowships than any other institution in England, Northern Ireland and Wales – reflecting the excellence of our tuition. Study here and you will be taught by academics who are engaged in world-class research and cutting-edge professional practice, keen to share their knowledge, challenge and inspire you.

### Join us and you can expect:

- to be taught and supervised by academic staff, many who are also consultants and practitioners and who are all as passionate about your subject as you are
- an interdisciplinary approach to learning and high-quality academic teaching informed by world-leading research; ensuring what we teach is up to date and relevant
- teaching informed by a wide range of internal and external collaboration
- courses that are informed by the needs of business and industry
- essential training to develop lifelong transferable skills and enhance your employment prospects
- outstanding facilities and services, including one of the biggest and best academic libraries in the UK
- an excellent student experience in a friendly, supportive environment.

### First-class facilities

We are a large, distinguished institution, able to invest in world-class facilities for our students and staff. By 2015/16 we will have spent over £100m on new buildings and refurbishment to create an environment to pursue excellence in research and teaching, with a further £200m of expenditure in the pipeline.

Our outstanding facilities and services include an environmentally-friendly Student Services Centre and one of the largest fitness centres on any university campus.

### City campus

Our single campus sits on the edge of the city centre, and a short 10-minute walk will take you to the heart of the city of Leeds. Renowned as a centre for arts, sport, leisure and entertainment, Leeds is a cultural and vibrant city.

### What others are saying about us

#### The inspectors

The Quality Assurance Agency (QAA) safeguards and helps to improve the academic standards and quality of higher education in the UK. During their most recent audit, the University received the highest category of praise available – a commendation – for the enhancement of student learning opportunities.

#### International Student Barometer

The University has been ranked 1st out of 16 participating Russell Group universities for 'overall international student satisfaction' in the latest *International Student Barometer* survey.

### Postgraduate study at Leeds

#### Taught Degrees

Postgraduate courses have many benefits: they enable you to enhance your knowledge of a specialist area, extend your understanding of a subject, prepare you for a career or enhance your options within your existing career. Some employers now require a Masters degree as standard. A postgraduate Masters course can also provide excellent grounding for further study for an MPhil or PhD.

You will combine traditional seminar and tutorial work with independent project-based investigation. Assessment is through written examinations, essays and projects as well as continuous coursework. Assessment methods can vary between faculties and schools.

[www.leeds.ac.uk/coursefinder](http://www.leeds.ac.uk/coursefinder)

All our degrees are fully compatible with the Bologna Framework for Qualifications of the European Higher Education Area (EHEA); the University issues a combined Diploma Supplement and Transcript to all its graduates.

[www.ehea.info](http://www.ehea.info)

### Flexible study

Full-time courses last for 12 months. For those who don't wish to study full time there are other options. Some of our courses offer web-based distance learning or part-time attendance (subject to residential status).

Most flexible programmes enable you to accumulate credits as part of career development plans and work at a level appropriate to your needs.

International Masters students often progress to PhD programmes and we welcome applications from students who plan to undertake both Masters and PhDs at Leeds.

If you would like any information or advice about research degree study, please email Research Student Administration at [rp\\_applications@leeds.ac.uk](mailto:rp_applications@leeds.ac.uk) [www.leeds.ac.uk/rsa](http://www.leeds.ac.uk/rsa)





“I chose Leeds because it is known for its excellence worldwide and the Institute of Transport Studies is a well renowned institute for my specific field.

The quality of teaching is really good. How the information is transferred from the instructor to the student is important to me. Our professors are well known in their field and they have plenty of research experience and knowledge. I believe this course will give me a step up in my career when I go back to work for my company.”

**Yazan Madi**

MSc (Eng) Transport Planning and Engineering

*Pictured at the University of Leeds Driving Simulator*

## AN INTERNATIONAL UNIVERSITY

We are a truly international university. We have links with many leading institutions worldwide and over 5,000 postgraduate international students study with us each year.

“I was looking at several universities that do statistics around the world and the programme in Leeds had a combination of statistics and finance which is really unique. From all of the applications I did, Leeds was the easiest and the friendliest process. The International Office sent a lot of helpful information making it a simple process to come here; I even managed to arrange my accommodation before arriving in Leeds.

The University facilities are really good too. I love going swimming at The Edge and meeting my friends for coffee.”

**Javier Lopez**

MSc Statistics with Applications to Finance

*Pictured at The Edge cafe, with the 25m eight-lane swimming pool in the background*



Academic excellence is at the heart of our strategy, and internationalisation is integral to that. We take an international view of everything we do, whether that is welcoming students from other countries, developing relationships with universities and businesses around the world or incorporating an international dimension in our teaching and research.

We maximise the impact of our research and innovation through international strategic collaborations. We are a member of the Worldwide Universities Network (WUN) and have developed significant international links through our academic schools and faculties which has benefits for our students.

#### **An international experience on campus**

Whether you are an international or UK student, if you are looking forward to broadening your horizons at university, there are plenty of opportunities at Leeds.

Meet the world over a coffee at the Global Café, explore new global and cultural perspectives at the World Unite Festival, go on Global Saturday trips to explore the UK. Network with students who share your international interests by joining a choice of 40 international-related student clubs and societies.

If you want to contribute to your University and develop valuable employability skills at the same time, you could apply to be one of the University's Intercultural Ambassadors. Our Ambassadors create exciting new intercultural projects to enhance the international experience of our global community of students.

[www.globalcommunity.leeds.ac.uk](http://www.globalcommunity.leeds.ac.uk)

#### **International student support**

Leeds has a long history of providing both an inspirational academic experience and excellent student support.

As one of the most popular destinations in the UK for international students, we understand your needs and have developed specialist support to help you make the most of your time with us.

The International Student Office offers specialist international student advice and assistance. You can get help with issues like preparing for university life, immigration and UK regulations, opening bank accounts and other support to help you adapt to life in Leeds. You can ask questions or discuss any worries you may have, or find out about the opportunities on campus.

#### **International welcome**

We know that your first few days and weeks here are really important to the success of your time at Leeds, so we offer specialist arrival and orientation support for international students throughout the year, including a welcome pack that you'll get on arrival.

The International Student Office runs a free welcoming Meet and Greet Service for international students arriving in Leeds in September. The International Welcome Team will meet you when you arrive in Leeds and give you all the information you need to settle in during your first few days.

International Welcome Week provides an excellent introduction to Leeds and is a key part of a successful study experience. During this week, you will benefit from a wide programme of social events and workshops covering issues such as UK study skills and adjusting to your new home.

If you are not arriving in September, the International Student Office runs welcome and orientation sessions every week throughout the year. You can collect your welcome pack from the International Student Office and we can help you with any questions you may have.

[internationalstudents@leeds.ac.uk](mailto:internationalstudents@leeds.ac.uk)

[www.internationalstudentsupport.leeds.ac.uk](http://www.internationalstudentsupport.leeds.ac.uk)



## RESEARCH AND TEACHING EXCELLENCE

Whichever course you choose, you will find that research is at the heart of your learning. Our staff and students are continually striving for academic excellence. Studying here, you will experience an inspirational learning environment and be taught by staff actively engaged in world-class research. This knowledge informs your studies, meaning lectures and seminars are not only highly engaging, but also very relevant to today's world.

“The University of Leeds is well known for biological sciences, so for me it was just a matter of choosing which field I wanted to specialise in and the type of tuition and course structure offered. The website was very informative about the modules I could choose from. I was interested in host parasite interactions.

There's a personal tutor in the faculty, who really looks after you and makes sure you are adjusting okay. I'm now considering a PhD, as I would like to work as a researcher in academia.”

**Ciara Lim**

MSc Infection and Immunity

*Pictured in the lab in the Faculty of Biological Sciences*



### Research excellence

Our breadth of knowledge and expertise underpins our commitment to ensuring our research has direct economic and societal benefit. Our key areas of research reflect this;

#### Health

Researchers from the University of Leeds have discovered that mutations in a specific gene are responsible for a hereditary form of melanoma. Every year in the UK, almost 12,000 people are diagnosed with melanoma, a form of skin cancer. The team, funded by Cancer Research UK and the Wellcome Trust Sanger Institute, also found that there were cases of other cancer types in families with these hereditary mutations such as leukaemias and brain tumours.

#### Water

A study of coastal cities around the world found that whilst European cities top the leader board for their resilience, Shanghai is most vulnerable to serious flooding. The findings were based on a new method to calculate the flood vulnerability of cities, developed by a team of researchers from the Netherlands and the University of Leeds. The University hosts a large interdisciplinary centre for water research, called [water@leeds](mailto:water@leeds), encompassing expertise from across the physical, biological, chemical, social and economic sciences and engineering as well as the arts. [water@leeds](mailto:water@leeds) also has good links with industry and a track record of collaborative research to develop solutions to the world's major water issues.

#### Food

A study led by the University of Leeds has shown that global warming of only 2°C will be detrimental to crops in temperate and tropical regions. The researchers created a new data set by combining and comparing results from 1,700 published assessments of the response that climate change will have on the yields of rice, maize and wheat. The study also fed directly into the Intergovernmental Panel on Climate Change (IPCC) Fifth Assessment Report, aimed at providing a clear and up to date view of the current state of scientific knowledge relevant to climate change.

### Energy

A revolutionary liquid-cooled computer server, tested at the University of Leeds, could slash the carbon footprint of the internet. While most computers use air to cool their electronics, all of the components in the new server are completely immersed in liquid. See our video on the University's YouTube channel, where Dr Jon Summers from the School of Mechanical Engineering shows what happens when you put an iPhone in a beaker of the secret ingredient. Search for [iphone dunk leeds](http://www.youtube.com) at

[www.youtube.com](http://www.youtube.com)

### Culture

Exploring the impact of innovation in technology during the Great War and shedding light on how people resisted the war are just two of many insights offered by University of Leeds research. The research and public engagement project, Legacies of War, was set up in anticipation of the 1914-18 war's centenary and gives us a valuable opportunity to explore the many ways in which people's everyday lives, both in Britain and further afield, were touched by the war. At the heart of much of the research is the University of Leeds' Liddle Collection, an unrivalled archive that includes the personal papers of more than 4,000 people, as well as artefacts, memorabilia and oral testimonies of veterans and their relatives.

### Cities

While urbanisation continues to harm biodiversity, a major global study by the University of Leeds revealed surprisingly large numbers of plant and animal species persisting and even flourishing in urban environments. The research, involving the National Center for Ecological Analysis and Synthesis (NCEAS) at UC Santa Barbara in the United States, looked at 147 cities worldwide. Contrary to the conventional wisdom that cities are biodiversity wastelands, the study found that individual cities typically hosted hundreds of bird species and thousands of plant species.

Find out more about our research at [www.leeds.ac.uk/research-and-innovation](http://www.leeds.ac.uk/research-and-innovation)

### Teaching excellence

Our internationally renowned research is at the heart of campus life. As a student here, you will experience research-based teaching and work alongside academics who are making discoveries and breakthroughs in your subject. You will develop excellent relationships with your lecturers and tutors, and their passion and support will ensure you are at the forefront of knowledge creation.

Professor Anne Neville is Deputy Head of the School of Mechanical Engineering at the University, and leader of the Corrosion and Surface Engineering Research Group. Recipient of the UK's first ever 10-year Royal Academy of Engineering Research Chair in Emerging Technologies, Professor Neville is also course coordinator for the MSc in Oilfield Corrosion Engineering.

"Research and teaching are very intimately linked in the Oilfield Corrosion Engineering course, and I think that's what makes the programme unique. We are teaching from a position of understanding of what the current issues are; we're teaching the science, which is a given, but Leeds is a world leader in this area, so the theory is backed up by pioneering research.

"There are so many big challenges surrounding oilfield corrosion engineering, and it's important that these are addressed in our teaching. It's a fairly fast moving field, and one which has huge impact. For example, if the oil price changes, there are consequences for the whole economy – so oil and gas are extremely important. Especially because there's pressure now to reduce the environmental impact, so we have to make sure that we recover it very effectively, and then when we've got it, that we use it very effectively as well. In the School of Mechanical Engineering, we're involved in the recovery of oil and gas, so our students are learning all about how to get oil and gas from under the sea, in a safe and economic manner, while understanding the science of it, which is pretty challenging.

"In fact, it's probably as challenging, if not more so, than the space programme. We're going 3,000 metres into the subsea, and then maybe another 2,000 metres into the rock beyond, so we're talking about depths and pressures that are enormous! The technological demands are huge and comparable with what you see in the space programme – it's just that we're going down instead of up.

"I think, in every way, our students get an absolutely fabulous experience. Our laboratories are very well equipped – probably the best oilfield corrosion labs in the country. Because we're actively researching in that area, we attract funding which allows us to provide state-of-the-art equipment, which benefits students in the School. Our computational facilities and lecture spaces are very good, and there's a lot of great social space in the department too.

"We have a particularly good rapport with our postgraduate students – they each have a personal tutor for their research project, so we get to know the students we supervise. For me, that's a really enjoyable part of my teaching; their projects are quite substantial, and I feel I can help them go that extra mile with my knowledge and research in the subject. This year, some of my students got to attend a conference in the USA where they had the opportunity to listen and learn from experts in the field – it was a great experience for them.

"Prospective students need to be competent in physical sciences and have a desire to learn. They should be motivated, and interested in engineering, in addition to the science. In return for their hard work, the employment prospects for students in this area are extremely good; about half of my students go onto PhD study and half go into industry. There are lots of jobs in the field of oilfield corrosion engineering – it's not unusual for students to go straight from their Masters to working as an engineer in the UK earning £55,000. I actually make sure I have copies of the CVs of my current students, because I often get requests from companies who are looking to recruit graduate engineers. It's great to know there are so many opportunities for students after their time at Leeds."

“Research and teaching are very intimately linked in the Oilfield Corrosion Engineering course, and I think that’s what makes the programme unique. We are teaching from a position of understanding of what the current issues are; we’re teaching the science, which is a given, but Leeds is a world leader in this area, so the theory is backed up by pioneering research.”

**Professor Anne Neville**  
Professor of Tribology and  
Surface Engineering



## PREPARING FOR YOUR NEXT STEP

Whether you are planning for further study or progressing your career, a postgraduate degree from the University of Leeds makes you stand out. Our courses look to increase not only your technical and academic knowledge but also develop key transferable skills valued by employers.

“I want to focus my career in the cultural industries. For my Masters I did a lot of internet research for which universities are the best in this field and chose the University of Leeds. I also liked Leeds the city.

As an international student, it's really helped to have a good relationship with my personal tutor and course supervisors. This has built up my confidence step by step and guided me through my Masters and supported me with my research at PhD level.”

**Fan Wu, pictured with her PhD supervising academic Dr Ben Walmsley**  
MA Culture, Creativity and Entrepreneurship

*Pictured in the Alec Clegg Studio, one of two theatre spaces within the Faculty of Performance, Visual Arts and Cultures*



We offer a wide range of services designed to assist you in shaping your career.

### Careers Centre

The Careers Centre is here to help you explore opportunities and make decisions about your next steps. From finding work or further study to working out your interests, skills and aspirations, we can provide you with the expert information, advice and guidance you need. Whether you're not sure what your next step is, don't know where to start or know what you want to do and just need some guidance on your CV, we can help.

### How we can help you

As experienced, qualified careers professionals, we can give you clear advice, our services include:

- drop-in and guidance appointments – from CV checking to advice on gaining work experience
- mock interviews – we can give you a trial run and provide you with feedback to help you succeed on the day
- eGuidance – for students who are unable to make it to the Careers Centre or for graduates who have moved away. This service gives you access to help and support from one of our expert advisors
- information resources – we have a wealth of information at the Careers Centre for guidance and advice in your career planning
- graduates from the University of Leeds are highly regarded and the University has close links with many top graduate recruiters including IBM, ASDA Walmart, BP, Global, KPMG, Procter & Gamble, Santander, Unilever and Network Rail
- the SPARK initiative, our innovative business start-up support, has helped many of our graduates successfully set up businesses and is available at the Careers Centre. A team of specialists will ensure you get the most up-to-date information, and crucially, dedicated support throughout your entrepreneurial journey – from start-up to growth and beyond.

<http://careerweb.leeds.ac.uk>

### Enterprise at Leeds

Enterprise at Leeds is a University-wide strategy to make enterprise a distinctive feature of the University. It encourages students to get involved in enterprise education, real-world enterprise activities and gives them a chance to apply for alumni-funded Enterprise Scholarships.

Nigel Lockett is Professor of Enterprise at the Leeds University Business School and the Head of Enterprise at Leeds: "I'm an entrepreneur turned academic; after graduation, I only worked for one year before setting up my own company. Then it was much later in life that I actually went back to University to do a specialist Masters and then a PhD before becoming an academic."

Nigel also runs the Leeds Enterprise Centre (LEC), which is the curriculum centre for enterprise education. "We've developed modules and programmes which provide students the route into enterprise. At postgraduate level we've launched a specialist Masters; the MSc Enterprise. This is supported by a team of academics who cover the whole spectrum of enterprise from new venture creation and business start-up, to how to use enterprise skills to make an impact in a social as well as economic way."

LEC also runs some collaborative programmes, like the MA in Fashion Enterprise and Society. The Design School is leading the academic subject specialism and Nigel and his team support the enterprise skills development for new venture creation and understanding social enterprise.

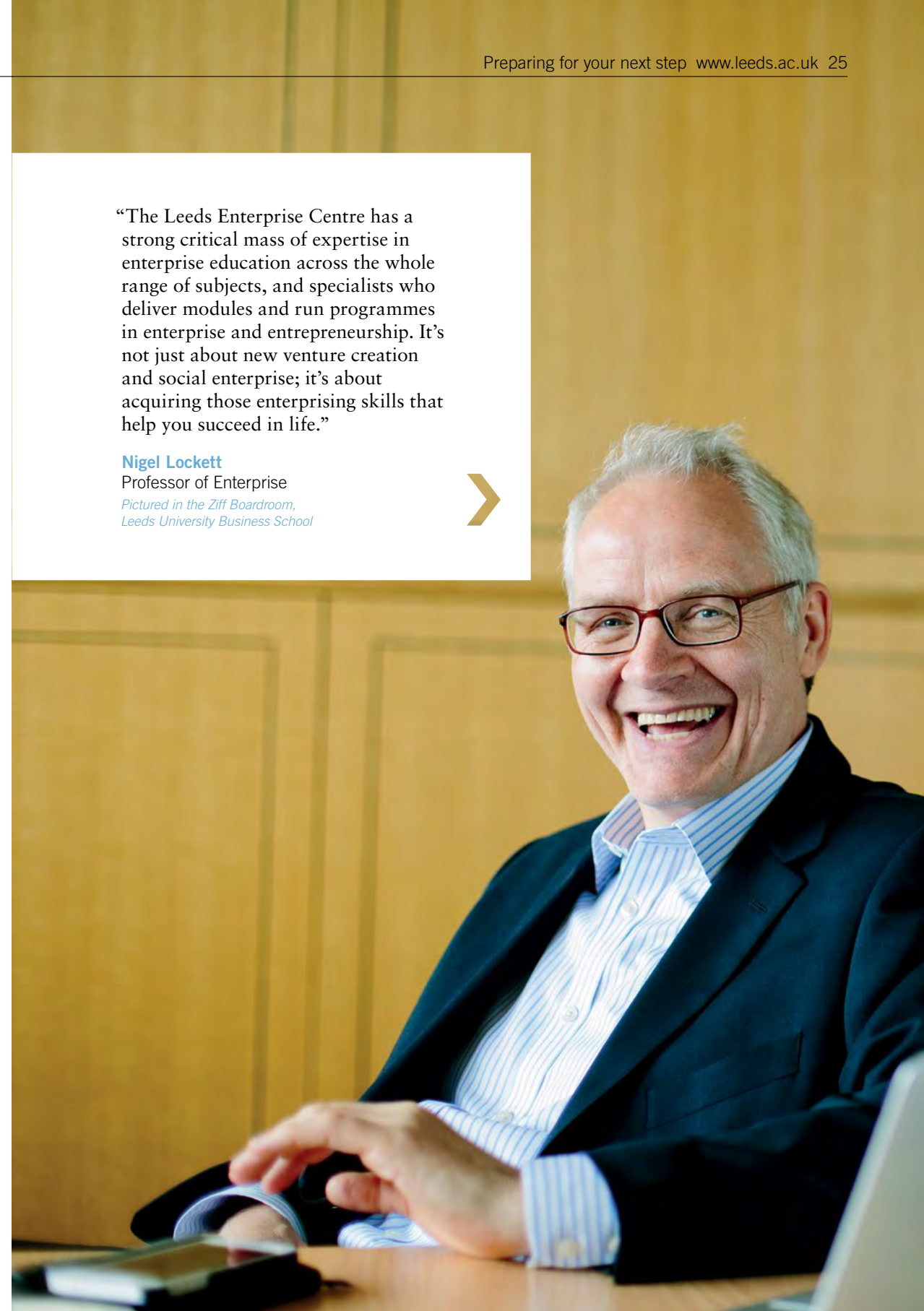
"Collaborative programmes like this mean that we get a huge diversity in the student groups, which is really exciting for both the students and academic staff."  
(continues on page 28)

"The Leeds Enterprise Centre has a strong critical mass of expertise in enterprise education across the whole range of subjects, and specialists who deliver modules and run programmes in enterprise and entrepreneurship. It's not just about new venture creation and social enterprise; it's about acquiring those enterprising skills that help you succeed in life."

### Nigel Lockett

Professor of Enterprise

*Pictured in the Ziff Boardroom,  
Leeds University Business School*





*Rob:* “I knew that I wanted to start my own business so I enrolled on the MSc Enterprise.”

*Andy:* “The idea for TourOutdoor was opportunity-driven; we didn’t have a particular ambition to go into the tourist industry, we just saw an opportunity and went for it.”

*Rob:* “We’ve done a lot of travelling, and you realise that when you land somewhere, you don’t really have a clue about the environment. Leeds is a highly international University and we had people on our course who were saying ‘Where can we go?’ And we thought ‘We’ll take you on tours and show you around the UK’. Andy’s a Yorkshireman and we are both really passionate about the UK, so we thought it would be a great business idea. We’ve had absolutely loads of support from the University and from the Careers service.”

*Andy:* “SPARK has been great as they’ve given us scholarship money and training; they sent us on the boot camp. We picked the Enterprise programme to get experience – not just to get the degree, but the skills to enable us to set up other businesses in the future.”

**Rob Conway and Andy Green**

MSc Enterprise

Owners of TourOutdoor

*Pictured on board the TourOutdoor coach*



“Increasingly, we find that students are seriously thinking about starting a business whilst they’re studying, because they’ve got a ready-made support network - not only from us as a University, but also a peer support network.

“Andy Green and Rob Conway (see page 26-27) were the first postgraduates to get an Enterprise Scholarship and received £5,000 worth of boot-camp experience, business advice and funding for their new venture. They didn’t know each other until they came on the programme. They recognised that UK tours aimed at international students weren’t very good – so they started their business.

“It’s really exciting to work with students as they go on that entrepreneurial journey, deciding what makes a good idea, questioning if it’s really a business opportunity and then working out how best to exploit it.

“We’ve got external networks that we leverage; entrepreneurs come onto campus to give live teaching cases, judge business plans and become mentors, so you get access to someone who’s grown their business and who will help you to understand the journey you’re about to go on. But it’s not just about new venture creation and social enterprise, it’s about acquiring those enterprising skills that help you succeed in life.”

The University is accredited with the Small Business Charter Gold Award.

[www.leeds.ac.uk/enterprise](http://www.leeds.ac.uk/enterprise)

### Leeds for Life

Leeds for Life makes a major contribution to ensuring you get the very best personal development during your time here. At the heart of Leeds for Life is the personal tutoring process, which ensures you get structured one-to-one meetings to support your professional as well as academic development. This not only helps you in your degree, but you’ll also become a confident, articulate and highly employable graduate. Leeds for Life helps you to reflect on the whole university experience and understand the value of your skills so that you can articulate the benefits of being at a world-class university when talking to potential employers. The new Leeds Network gives you access to career profiles of our alumni and an opportunity to contact them to find out more about how they got to where they are now.

[www.leeds.ac.uk/leedsforlife](http://www.leeds.ac.uk/leedsforlife)

### Our graduates

Joining us at the University of Leeds is the start of a lifelong relationship. When you graduate you will automatically be part of a Leeds Network community of 220,000 Leeds alumni in over 180 countries. You will have access to a range of benefits and services, and a membership of a worldwide professional and social network.

On campus, our alumni benefit from use of our libraries, access to Leeds University Union and even a special rate at our sports facility. Our alumni play an important role in the life of the University: by offering advice to prospective and current students, talking about their own careers, offering internships, funding scholarships and other projects to enhance the student experience at Leeds.

[www.alumni.leeds.ac.uk](http://www.alumni.leeds.ac.uk)

@LeedsAlumni

[www.facebook.com/leedsalumni](http://www.facebook.com/leedsalumni)

Search for us on LinkedIn in ‘Leeds Alumni’



“My Masters degree was in Biotechnology. The programme was very well designed, and included areas such as pharmaceutical drug development, molecular biology, bio-chemistry and pharmacology.

The most satisfying thing about my entire course was the research project. I even had the opportunity of getting a paper published in the journal *Biomaterials*, as a first author.

I was also a frequent visitor to the Careers Centre. The support and guidance I got for my CV helped me get a research job in Dubai and then get accepted for my PhD in the University of Connecticut, USA.”

### Bharat Behl

MSc Biotechnology

*Pictured in the lab at University of Connecticut where he is studying for a PhD in Biomedical Science*





## SCHOLARSHIPS, TUITION FEES AND LIVING COSTS

Postgraduate study at Leeds is a major investment in your future, and some support is available to help ease the financial pressure in the form of postgraduate scholarships.

“I applied for a scholarship and was lucky enough to get awarded a Santander scholarship based on academic merit, and a further scholarship from the School of Geography. This was great as it paid my course fees and meant that I could afford to live in student accommodation at St Mark’s, near campus. Being so close has allowed me to have the time to be a course rep, join The Edge gym and sing in the Leeds City Philharmonic Chorus.

Before I started this course I was an environmental consultant for two years, so I am hoping to progress my career when I finish.”

**Sarah Usher**

MSc River Basin Dynamics  
and Management with GIS

*Pictured by the Leeds and Liverpool canal at Saltaire, a  
World Heritage site 20-minutes train journey from Leeds*



The University of Leeds and other funding bodies offer a range of scholarships to UK, EU and international students. For full details of the University of Leeds scholarships, award values and terms, please check on the postgraduate scholarships website

<http://scholarships.leeds.ac.uk>

### Alumni bursary

If you are a former student of the University of Leeds, you may be eligible for a 10% alumni tuition fee bursary for your Masters degree\*.

Or, if you didn't study for your first degree at Leeds, but decide to come here for your Masters with the intention of staying on to complete a PhD, you may be eligible for a bursary for your research degree. Visit our website for terms and conditions and eligibility criteria at [www.leeds.ac.uk/alumnibursary](http://www.leeds.ac.uk/alumnibursary)

### International scholarships

If you are coming to study here from overseas you should also contact your own government agencies as there may be educational support schemes available which provide funding to study in the UK.

\*Terms and conditions apply



### UK/EU scholarships

Scholarships are very competitive and it is important to make enquiries and apply to all possible sources at an early stage in your application for study. You must have applied and received your Student ID number before you can submit an application for a scholarship.

The Research Councils operate a number of grant schemes for UK/EU postgraduate students (Masters and research). UK students are eligible to receive tuition fees and a maintenance grant, as well as some training and fieldwork costs. Candidates should check the relevant Research Council website for further information [www.rcuk.ac.uk](http://www.rcuk.ac.uk)

Further information about sources of funding for postgraduate study at Leeds can be found at <http://scholarships.leeds.ac.uk>

### Other financial support

For information on financial assistance to support your learning, go to [www.gov.uk/browse/education/student-finance](http://www.gov.uk/browse/education/student-finance) or telephone **+44 (0)800 100 900**

### Access to Learning Fund (ALF)

If you meet the residence requirements for a 'home' student and have commenced study on a full or part-time postgraduate course, you are eligible to apply for the Access to Learning Fund. This is government funding designed to help students enter and remain in higher education – particularly those who need financial help to meet extra costs which cannot be met from other sources of support, including funding for diagnostic tests such as dyslexia assessment. Money you receive from the fund is usually non-repayable.

[www.leeds.ac.uk/ssc/alf](http://www.leeds.ac.uk/ssc/alf)

### Tuition fees

The cost of a postgraduate degree varies by course and our fees are reviewed on an annual basis.

You will be classified as either a 'home/EU' or 'international' student for the purpose of assessing your tuition fees. If this is not clear on your application form, you will be asked to complete a fees assessment form.

For further information and advice, you can consult the UK Council for International Student Affairs (UKCISA) [www.ukcisa.org.uk](http://www.ukcisa.org.uk)

The figures here are for 2015-2016. These fees are intended only as a guide. For the most up-to-date fees information please check with the relevant school or department before you apply.

Fees quoted are based on full-time study and apply for each year of the course. In all cases these are the MINIMUM fee only. As a large number of courses are priced above this, it is important that you check with the school or department for the actual fees for your course.

### Minimum home/EU fee for full-time Masters programmes for 2015/16

Minimum home/EU	£5,500
-----------------	--------

### Range of international fees for Masters programmes for 2015/16

Arts/Social Studies/Law/ Education	Minimum £14,000
Science/Engineering	Minimum £17,750
Business	Minimum £14,500
MBA	£24,500*

\* Fee to be confirmed.

This information is provided for general guidance only. You will be given details of your specific fees with your offer letter.



### Part-time students

If you are studying part time, the fee is normally adjusted based on the proportion of the course studied each year, but this is not always the case. You'll need to confirm this with the individual schools admissions office.

The majority of part-time postgraduate Masters fees are fixed at the point of entry and will not rise in subsequent years of the course. This means you can more easily plan your finances at the outset.

### International students

International students taking programmes of more than one year have their fees fixed at the rates in the year of entry (subject to normal progression).

Self-supporting students can pay fees in full, or in two instalments. If paying in two instalments, 50% must be paid when registering and 50% is payable by direct debit from a UK bank account approximately five months after your start date. The academic fee covers normal tuition and examination costs, as well as membership of the Students' Union. You should check the detailed information sent with your offer letter. Students on some programmes may incur additional expenses or bench fees.

If you have any enquiries telephone  
**+44 (0)113 343 6055**  
or email [fees@leeds.ac.uk](mailto:fees@leeds.ac.uk)

### Living costs

In addition to academic fees, all students must budget for living costs such as accommodation, food, clothing, books, local travel and entertainment. The cost of living in Leeds is relatively low by UK standards and while costs will vary depending on individual lifestyles, we recommend a living cost budget of £650-£800 per month.

For money advice and tips on budgeting visit  
[www.leedsuniversityunion.org.uk/helpandadvice/money](http://www.leedsuniversityunion.org.uk/helpandadvice/money)



“I work as an academic on a Youth Work course. I applied to the University of Leeds as a mature student because I wanted to increase my academic knowledge and research skills across any subject. I work full time, so a part-time course was the only option for me. It's hard work doing both, but my lecturer has been very supportive. He's even allowed me to swap some of my lectures for seminar attendances, so I can manage both my job and my study. As part of my research I volunteer at a local activity centre for young people.”

**Caroline Mountain**  
MA Social Research

*Pictured at Herd Farm activity centre, Leeds*





## ENTRY REQUIREMENTS AND HOW TO APPLY

The normal entry requirement for a Masters course is the equivalent of a good bachelor degree in the British system.

The University of Leeds welcomes a wide range of international qualifications for entry to postgraduate study. Requirements vary between schools so please check the exact requirements for your course.  
[www.leeds.ac.uk/coursefinder](http://www.leeds.ac.uk/coursefinder)

### English language entry requirements

If English is not your first language, you will need a recognised English language qualification to be admitted on to any of the University's Masters degree programmes.

Acceptable minimum qualifications include:

- IELTS (International English Language Testing System): an overall band of 6.5 with no less than 6.0 in each component skill
- TOEFL (Test of English as a Foreign Language) internet-based test (IBT): a total score of 92 with no less than 21 in Listening and Reading, 22 in Writing and 23 in Speaking
- Pearson Test of Academic English (PTE Academic): a minimum of 64 on PTE Academic, with at least 60 in each of the skills.

Other English language qualifications are also accepted. Please consult our admissions policy for details at

[www.leeds.ac.uk/pgtadmissionspolicy](http://www.leeds.ac.uk/pgtadmissionspolicy)

Please note, some schools and programmes have higher English language requirements than these, so please check with your school when you apply.

You are welcome to apply to the University before you take one of these English language tests. If you meet all other requirements, you will receive an offer conditional on reaching the English language requirement before admission.

### Applying for a Masters programme is easy

You can apply for postgraduate courses using the online application system

[www.leeds.ac.uk/students/apply.htm](http://www.leeds.ac.uk/students/apply.htm)

or email [applyonline@leeds.ac.uk](mailto:applyonline@leeds.ac.uk)

If are unable to apply online you can download a paper copy of the application form at

[www.leeds.ac.uk/tp\\_application\\_form](http://www.leeds.ac.uk/tp_application_form)

If you have any enquiries please contact the Taught Postgraduate Admissions Team

**+44 (0)113 343 4044**

[tp\\_applications@leeds.ac.uk](mailto:tp_applications@leeds.ac.uk)

Teacher training candidates should note that applications must be made online through the UCAS Teacher Training web site at

[www.ucas.com/apply/teacher-training](http://www.ucas.com/apply/teacher-training)

### Worldwide representatives

All across the world, the University of Leeds works with overseas representatives who are happy to inform and advise students about Leeds.

Further information, including country-specific advice and details of our international network of country representatives, is available from the International Office at

[www.leeds.ac.uk/countryspecificinformation](http://www.leeds.ac.uk/countryspecificinformation)

### Points-based system for visas

Once you have accepted an unconditional offer from the University of Leeds and provided all necessary information to us, you will be issued with a Confirmation of Acceptance (CAS) which you must use to obtain your visa. A tuition fee deposit may also be required prior to CAS issuance.

[www.ukba.homeoffice.gov.uk/visas-immigration/studying](http://www.ukba.homeoffice.gov.uk/visas-immigration/studying)



“When I heard that the Institute for Transport Studies had won the highly-esteemed Queen’s Anniversary Prize for Excellence, I knew Leeds was the University for me. Currently my research is about CO<sub>2</sub> emissions in Transport. Eventually, I’d like to work as an integrated transport and land use planner or maybe study something at PhD level.

I am also a school rep, so I speak on behalf of and organise things for my fellow students. It can be quite difficult to know exactly what employers are looking for, so I organised an employability workshop on employer expectations and practice interviews for jobs in transport.”

**Benedictus Nyan**  
MSc Sustainability (Transport)  
*Pictured at Leeds City Rail Station*



## THE LANGUAGE CENTRE

Whether you're looking to develop your English and academic study skills in preparation for your University education or further your passion for languages, we have a specialist Language Centre based on campus to help you. The Language Centre offers a well-resourced Language Zone for independent study of foreign languages, as well as language support for international students through pre-sessional classes and in-sessional English language programmes.



### Pre-sessional English language support for international students

If your English language level is not quite at the required standard for entry to your chosen Masters degree programme, our English for Academic Purposes pre-sessional programme can help you to join the University, without needing to retake IELTS.

If you already fulfil the University's English language requirement at the time of application, you may still find the Language Centre's programmes useful preparation for your chosen degree programme.

For more information about pre-sessional courses visit

[www.leeds.ac.uk/presessional](http://www.leeds.ac.uk/presessional)

### How to apply

If you would like to study on a pre-sessional course, you can download an application form at

[www.leeds.ac.uk/languages](http://www.leeds.ac.uk/languages)

Completed application forms can be sent by post to:

**The Admissions Tutor, The Language Centre,  
University of Leeds, LS2 9JT**

or by e-mail to [elapplications@leeds.ac.uk](mailto:elapplications@leeds.ac.uk)

### Language facilities

Our Language Centre is well equipped, providing a large Language Zone, where you can study independently. Resources include learning materials in over 40 languages, an extensive collection of video material, over 50 satellite television channels in around 20 languages and computer assisted learning.

For more information about the Language Centre visit

[www.leeds.ac.uk/languages](http://www.leeds.ac.uk/languages)



“I chose to study the pre-sessional course before doing my Masters as I wanted to improve my English. It has also allowed me to spend some time to become familiar with the environment here, which has helped me build confidence in my studies and to make friends. When I first arrived, it was very hard to communicate with others in English. Now, six months on, I can talk!”

**Yan Li**

MA Professional Language and Intercultural Studies

*Pictured in the Language Centre*



## CAMPUS LIFE

Our vibrant campus on the edge of Leeds city centre has all the facilities and services you need to ensure you have the best possible student experience.

“I did my undergraduate degree at Leeds and really like it here. As I was a returning student I received a bursary towards my Masters course. I also got awarded a scholarship based on academic merit. I wouldn't have been able to do the course without them.

The library facilities here are excellent: I spend most of my time in the Edward Boyle Library, especially as we've had to do quite a lot of independent work this year.

It's also helped that all of the lecturers are really friendly and approachable and are always willing to provide support.”

**Eloise Brown**  
MSc Biodiversity & Conservation  
*Pictured in the Edward Boyle library*



## Sport

Whatever your level of fitness, our University provides excellent opportunities to keep healthy and get active. So whether you want to participate for fun, at club level or at the highest national and international standards, at Leeds you will be inspired to achieve your personal best.

The Edge is our flagship indoor facility providing excellent fitness, sport and wellbeing opportunities, all located on campus.

### Facilities include:

- 250 station state-of-the-art gym complete with Technogym equipment and Sky TV
- 25m eight-lane swimming pool
- sauna and steam room
- squash courts
- strength and conditioning rooms
- three studios offering over 130 classes per week covering everything from yoga and pilates to circuits and salsa aerobics
- climbing wall.

In addition, the University has excellent outdoor facilities at the SportsPark Weetwood, including more playing field space than any university in the UK.

For more information about sport and fitness at Leeds visit

[www.leeds.ac.uk/sport](http://www.leeds.ac.uk/sport)

## Computers and IT

We have some of the best computing resources in the country, according to *The Guardian University Guide 2014*, including three large-scale High Performance Computing clusters ('Supercomputer'), one on behalf of the Northern Universities research consortium. These facilities allow our researchers to create models and analyse data on a scale far beyond anything available on a desktop computer. Our new Office 365 email service includes bigger quotas and free downloadable Office Professional Plus for students.

<http://goo.gl/EvosgV>

### help@leeds

This is a joint project between the University and the students' union, designed to make it easy for you to find help when you need it. The help@leeds website gives you easy access to contact details for a range of support services on campus and quick links to useful information to answer your questions.

<http://help.leeds.ac.uk>

## Counselling

The Student Counselling Centre offers free, professional and confidential individual counselling, psycho-educational workshops, meditation groups, drop-in sessions, web-based self-help and online counselling for those who have problems with access.

[www.leeds.ac.uk/studentcounselling](http://www.leeds.ac.uk/studentcounselling)  
[stucouns@leeds.ac.uk](mailto:stucouns@leeds.ac.uk)

0113 343 4107

## Healthcare

If you have permission to be in the UK as a student for more than six months, you will be entitled to free medical treatment with the National Health Service (NHS). You must register as a patient with a General Practitioner (GP) and you will then be entitled to free treatment in NHS General Practice and NHS Hospitals (as long as the UK is your main home at that time).

Leeds Student Medical Practice is an NHS General Practice specialising in all aspects of student health.

[www.leeds.ac.uk/lsmip](http://www.leeds.ac.uk/lsmip)

## Disabled Students Assessment and Support (DSAS)

The DSAS provide information and advice on a wide range of topics to support learning and teaching. These include additional funding, one-to-one strategy support and personal assistants.

[www.equality.leeds.ac.uk/disabled-students](http://www.equality.leeds.ac.uk/disabled-students)  
0113 343 3927

## Childcare

Bright Beginnings Childcare Centre offers staff and students campus-based childcare which is registered with Ofsted and complies with the EYFS (Early Years Foundation Stage) framework. We provide high-quality care and education for children aged between three months and four years (or to the age at which they go to school) and a 56-place play scheme for school-age children.

[www.brightbeginningschildcare.co.uk](http://www.brightbeginningschildcare.co.uk)

## Chaplaincy

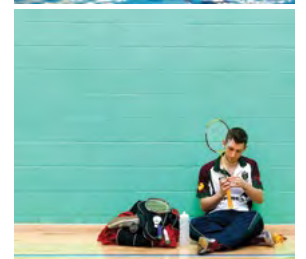
The University Chaplaincy offers spiritual and pastoral support to all students (of all faiths and none) throughout their time at Leeds. For details of our events and further information, visit

[www.leeds.ac.uk/chaplaincy](http://www.leeds.ac.uk/chaplaincy)  
0113 343 5071

## Skills@Library

Skills@Library provides workshops, online resources and advice to help develop your academic skills. You can book onto workshops covering topics such as presentation skills, preparing for exams, and finding and managing academic information. Alternatively, you can work through online tutorials and activities at a time and pace which suits you. There are drop-in sessions on offer to give support with maths problems and general advice on issues such as time management and essay structure. Skills@Library also provides rooms you can book free of charge for working on your group projects or presentations.

<http://library.leeds.ac.uk/skills>





“There are loads of things that you can get involved in here at the University, like the Union, the societies, non-course related lectures and socials. My advice would be to mix with people, get out there and get the full experience! In my halls I have Nigerian, Norwegian, Chinese, Malaysian and Lebanese roommates – it’s great.

I set up a football group with friends I met here. We’ll play at The Edge on their outdoor football pitch, which is a fantastic facility. There is always something going on here at the University that you can join in with and make new friends.”

**Raviraj Soman**

MSc Biodiversity & Conservation

*Rav is pictured on one of the 5-a-side football pitches at The Edge*



### Leeds University Union

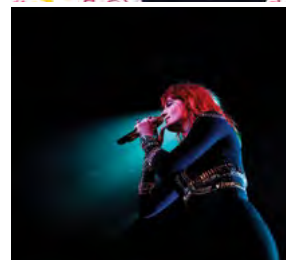
When you study at Leeds, you instantly become a member of the students' union, Leeds University Union, which offers you great services, support and opportunities, including over 300 clubs and societies, lots of places to meet, chill out and study.

The Union has played host to some of the biggest names in music, including Ed Sheeran, Frank Turner, Alt-J, Professor Green, Labrinth and Florence & the Machine. Legendary rockers The Who have even graced their stage.

One of the most popular and active student groups is the Postgraduate Society, they host events such as the Three Minute Thesis contest, where postgraduate researchers and Masters students have a get together and celebrate the outstanding work that is being done on campus.

The Union is an independent charity run by students, for students, so they understand exactly what support and social opportunities you may need throughout your studies. The independent Student Advice Centre provides confidential and impartial advice on housing, health and wellbeing and much more. The Advice Centre is accessible to prospective students as well as current students and can help with planning your funding, finding accommodation or any welfare queries you have.

**"BY FAR THE BEST STUDENTS' UNION IN THE COUNTRY (WORLD) AS WELL!"** NSS RESPONDENT 2012 // **"EXCELLENT STUDENTS' UNION WITH HUNDREDS OF DIFFERENT SOCIETIES."** NSS RESPONDENT 2012 // **LEEDS UNIVERSITY UNION IS THE ONLY STUDENTS' UNION TO WIN THE SUEI GOLD AWARD TWICE, EVER** // LUU SCORED 90% IN THE NSS 2012 OVERALL SATISFACTION RATING // **LUU WON GOLD IN NUS GREEN IMPACT AWARDS 2013, NUS GREEN UNION OF THE YEAR 2012/13.**



"There are so many places on campus to choose from to eat and to meet up with your friends. Sometimes we'll go to the Maths Café, or as most of my lectures are in the Roger Stevens building, we'll sit outside by the Waterside Café."

The union building is great for international cuisine or a visit to the Hidden Cafe for coffee and cakes. It also has a supermarket or you could shop at the mini farmers' market and have a picnic outside."

**Laura Mandefield**

MSc Statistics

*Pictured in the Hidden Cafe in Leeds University Union*



## ACCOMMODATION MAKING LEEDS YOUR HOME

Whether you are looking for family accommodation, a shared house, flat or studio, there is a wide range of accommodation on offer in Leeds.

“I come from Western Australia; my employer chose the University of Leeds specifically because of the world-renowned reputation of the Institute of Transport Studies; and they gave me a scholarship to come here.

The International Office was really helpful with sorting my accommodation with step-by-step checklists and the support material they sent us was super useful. I live in St Mark’s residence which is brand new and I really liked the idea of living with other postgrad students, we all hang-out with each other.”

**Catherine Wallace**

MSc Sustainability (Transport)

*Pictured at St Mark’s Residence, our newly-built, exclusively postgraduate accommodation*



Our University-owned accommodation are mainly self-catered residences. We provide kitchen facilities that you share with a small number of other residents. All rooms have a bed, wardrobe, desk and chair. Around a third of the rooms are en-suite, and where there is a shared bathroom, rooms may also have a washbasin. All residences have launderettes or provide washing machines.

We offer flexible payment methods and all our rents include energy bills, free high-speed internet access and basic contents insurance – so there are no hidden extras to pay. Most students will also receive membership to the University's flagship sports centre, The Edge.

#### Exclusively for postgraduate students

**St Mark's Residences** is a brand new development conveniently located less than two minutes' walk from the north-east corner of campus and within 15 minutes' walk of the city centre. A self-catered residence with over 500 en-suite bedrooms, a gym, business centre and lounge area, St Mark's offers 51 or 41 week contract lengths.

**Grayson Heights** are smart, modern apartments offering peace and privacy, close to local amenities, including a large supermarket and leisure centre, with 51 week contract lengths. At Grayson, you share a bathroom with one other person, and a kitchen and comfortable living room between just four other residents.

For more information about our postgraduate residences visit:

[www.accommodation.leeds.ac.uk/postgraduate](http://www.accommodation.leeds.ac.uk/postgraduate)

#### Our guarantee

We guarantee to provide University accommodation to all new single postgraduate students paying international fees who apply before the deadline. If you are a UK or EU postgraduate, although we cannot guarantee you University accommodation, we are confident that we will find you a suitable room.

If you start your course at any other time during the Academic year (other than Sept/Oct) or you are intending to study a pre-sessional language course, please see the accommodation website for details of how and when to apply.

[www.accommodation.leeds.ac.uk/apply](http://www.accommodation.leeds.ac.uk/apply)

#### Private sector accommodation

Independent help and advice is available on all aspects of private accommodation from Unipol, a student homes charity, and the Student Advice Centre (SAC) in the student union.

[www.unipol.leeds.ac.uk/leeds](http://www.unipol.leeds.ac.uk/leeds)

[www.leedsuniversityunion.org.uk/helpandadvice/housing](http://www.leedsuniversityunion.org.uk/helpandadvice/housing)



## CITY LIFE

Leeds has all you can expect from a major city and is surrounded by beautiful, accessible countryside. The compact city centre is a short 10-minute walk from campus with fast, frequent and cheap transport links.

“Leeds is a great city to photograph, with its different styles of architecture. Every week I meet with my friends in the photography society to discuss camera skills and technologies and how to take beautiful pictures.

There are loads of societies to join in LUU. I love archery, photography, swimming and badminton. I always go to The Edge gym to keep fit. I like the swimming pool especially as I know that the Chinese Olympic swimming team trained here.”

**Fan Long**

MSc Digital Communications Network

*Pictured out and about with his vintage camera in Millennium Square, Leeds city centre*



With a population of over 750,000, Leeds is home to people from more than 141 different nationalities. Over the years, people from all over the world have chosen to settle here. This gives the city a strong multicultural base, and makes Leeds an especially welcoming place for students of all origins and faiths.

Although the city's roots lie firmly in the textile industry, in recent years Leeds has become a centre for trade and commerce, and is one of Britain's most important financial, banking and legal centres. Leeds is energetic, fun and student-focused – it is one of the largest centres for university education in England. There is so much to explore and discover in Leeds and many of the city's cultural sights and venues are free or discounted for students.

[www.leeds.ac.uk/leedsandyorkshire](http://www.leeds.ac.uk/leedsandyorkshire)

### Arts and culture

The city has a vibrant cultural life, so whether you are a fan of cinema, opera, concerts or theatre, Leeds has something to suit you. Throughout the year the city is transformed by outdoor concerts in Millennium Square, street theatre and performance art, various European-themed festivals and markets, and even an ice rink in the winter. In and around Leeds you will find many areas of natural beauty and interest, such as Roundhay Park, Temple Newsam, Harewood House and Kirkstall Abbey. Within easy reach of Leeds are the Yorkshire Dales, Peak District and Lake District national parks and historic towns such as York, Harrogate, Ripon and Bradford.

### Sport

Leeds has a proud sporting tradition and has been chosen as the host city for the start of the 2014 Tour de France. The city is home to famous teams such as Leeds United Football Club, Yorkshire Cricket Club, Leeds Rhinos and Leeds Carnegie rugby clubs. If spectating isn't enough and you want to get active, one of the country's biggest real snow slopes is within easy reach, and the city has plenty of gyms and health clubs, including our own pool and fitness complex, The Edge.

### Shopping

As one of the UK's top shopping destinations, Leeds boasts over two miles of traffic-free shopping set in beautiful Victorian and Edwardian arcades. You'll find an eclectic mix of high street favourites, department stores such as Harvey Nichols, exclusive boutiques and vintage stores. Last year the city expanded its shopping opportunities even further, with the opening of Trinity Leeds, an exciting £350m retail and leisure haven in the heart of the city centre.

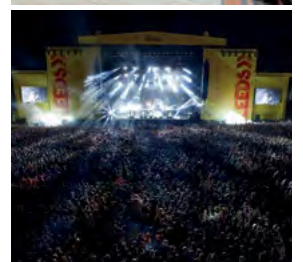
### Eating out and entertainment

The city offers an extensive choice of places to eat and drink to suit all culinary tastes and budgets. Leeds is famous as a major centre for entertainment and nightlife, and with an international reputation for music excellence, Leeds' world-class music scene can be experienced in every corner of the city, every night of the week. Live music venues include the new 13,500 capacity First Direct Arena, the O<sub>2</sub> Academy, the Cockpit, Brudenell Social Club and, of course, the University's Refectory, which has played host to some of the world's most famous bands including The Rolling Stones, The Who and Kaiser Chiefs.

### Transport links

The city is well served by affordable and frequent local transport with extensive coach and rail services connecting Leeds with the rest of the UK. Leeds is a perfect starting point for trips to London (just over 2 hours by train) or Edinburgh (3 hours by train).

Leeds Bradford International Airport is only 30 minutes away from campus, providing regular flights to an increasing number of destinations. In addition, Manchester Airport is just an hour away by train or road, giving you the opportunity to explore even further afield.





3RD LARGEST CITY IN THE UK,  
SURROUNDED BY CULTURE, HISTORY  
AND OUTSTANDING NATIONAL  
PARKS//**AN ACCLAIMED NIGHTLIFE  
AND VIBRANT MUSIC SCENE**//ONE  
OF THE GREENEST CITIES IN THE  
UK// **OVER 2 MILES OF TRAFFIC-  
FREE SHOPPING INCLUDING  
TRINITY LEEDS AND BEAUTIFUL  
VICTORIAN AND EDWARDIAN  
ARCADES FILLED WITH SHOPS OF  
EVERY KIND**//JUST OVER 2 HOURS  
FROM LONDON AND 3 HOURS FROM  
EDINBURGH BY TRAIN, IT IS THE  
PERFECT BASE TO TRAVEL AROUND  
THE UK



## HOW TO FIND US IN THE UK

A vibrant city surrounded by countryside, Leeds is at the heart of the UK. In addition to excellent bus and rail services, the nearest international airport is just 30 minutes away.

For full details on how to get here by train, bus, car and air, please visit [www.leeds.ac.uk](http://www.leeds.ac.uk) and click on 'how to find us'.

City	Distance	Minimum travel time by train
York	24 miles	22mins
Manchester	42 miles	54mins
Newcastle	96 miles	1hr 27mins
Birmingham	118 miles	1hr 55mins
London	195 miles	2hrs 6mins (King's Cross)
Edinburgh	206 miles	3hrs



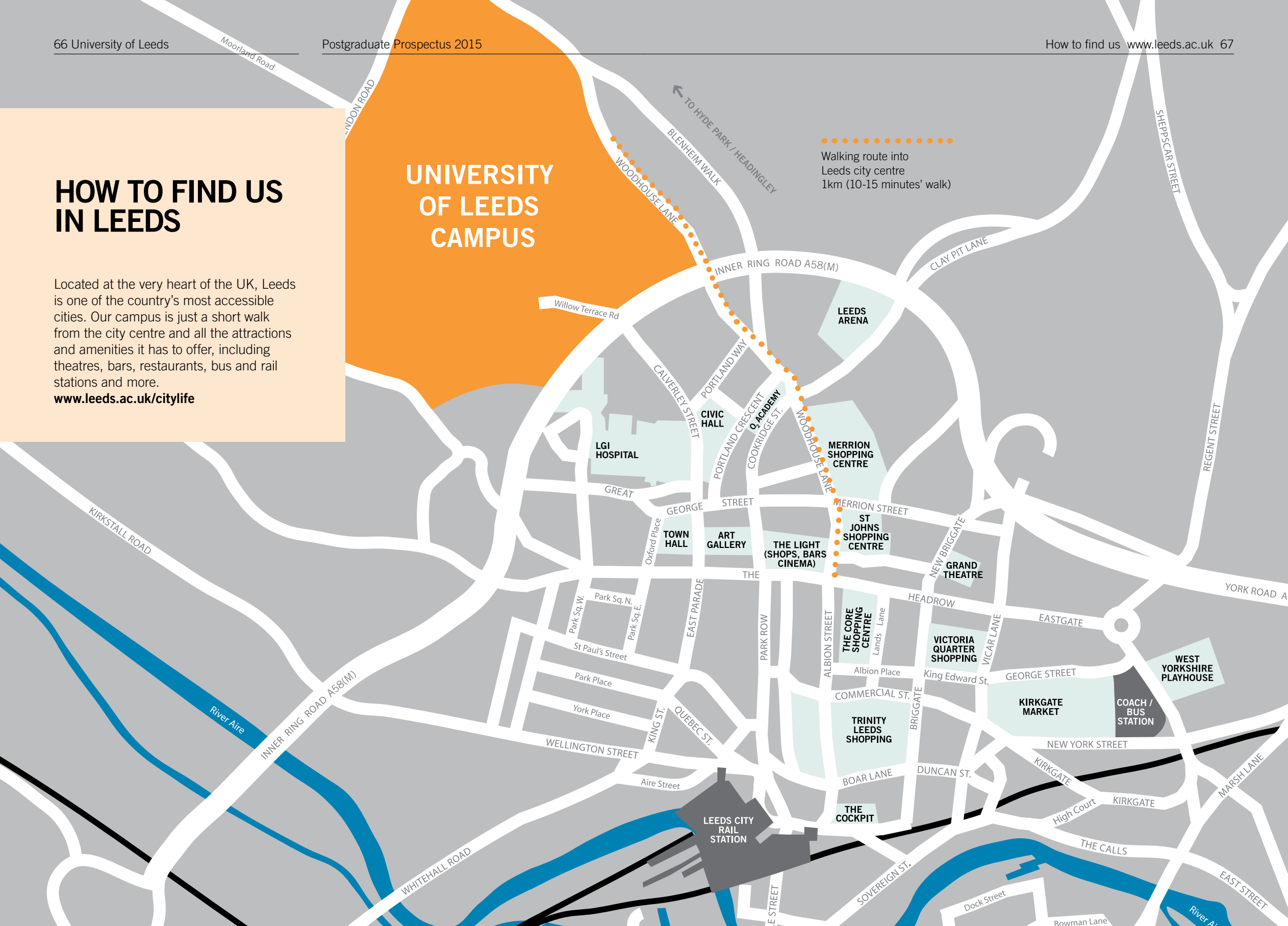
# HOW TO FIND US IN LEEDS

Located at the very heart of the UK, Leeds is one of the country's most accessible cities. Our campus is just a short walk from the city centre and all the attractions and amenities it has to offer, including theatres, bars, restaurants, bus and rail stations and more.

[www.leeds.ac.uk/citylife](http://www.leeds.ac.uk/citylife)

## UNIVERSITY OF LEEDS CAMPUS

Walking route into Leeds city centre  
1km (10-15 minutes' walk)



# CAMPUS MAP

The University of Leeds is a single campus at the heart of Leeds. Highlighted on the map are the key buildings that our students use regularly.

[www.leeds.ac.uk/campus-life](http://www.leeds.ac.uk/campus-life)

## Key locations

### Eating and drinking

Refectory	29
Union (LUU) shops and bars	32

### Libraries

Brotherton	59
Edward Boyle	83
Health Sciences, Worsley building	95

### Main lecture theatres

Conference auditorium	100
Roger Stevens	89
Rupert Beckett (in Michael Sadler building)	78

### Sport

The Edge	101
Gryphon	17
Cromer Terrace studio	27



**Important**

This prospectus was printed in July 2014 and some of the information in it may have changed. For up-to-date information about our postgraduate courses, visit [www.leeds.ac.uk](http://www.leeds.ac.uk) or follow the contact details for people and websites given throughout this prospectus.

**Produced by Communications,  
University of Leeds**

**Photography:**

Case studies: Mark Webster Photography

**Any questions?**

If you have any questions about postgraduate study at the University of Leeds, please feel free to get in touch using the contact details below:

**Admissions enquiries**

T: +44 (0)113 34 32336

E: [study@leeds.ac.uk](mailto:study@leeds.ac.uk)

W: [www.leeds.ac.uk/postgraduate](http://www.leeds.ac.uk/postgraduate)

**International Office**

T: +44 (0)113 34 32336

E: [international@leeds.ac.uk](mailto:international@leeds.ac.uk)

W: [www.leeds.ac.uk/internationalstudents](http://www.leeds.ac.uk/internationalstudents)

You can also ask questions using social media:

 @UniversityLeeds

 [www.facebook.com/universityofleeds](http://www.facebook.com/universityofleeds)

**Alternative formats**

If you require any of the information contained within this publication in an alternative format eg Braille, large print or audio, please email [disability@leeds.ac.uk](mailto:disability@leeds.ac.uk)



**UNIVERSITY OF LEEDS**

Admissions Enquiries  
University of Leeds  
Leeds LS2 9JT  
UK

T: +44 (0)113 343 2336

E: [study@leeds.ac.uk](mailto:study@leeds.ac.uk)

W: [www.leeds.ac.uk/postgraduate](http://www.leeds.ac.uk/postgraduate)