

Postgraduate
Research Brochure

RESEARCH

THAT
MATTERS



UNIVERSITY OF LEEDS

OUR CAMPUS BY THE CITY

PARKINSON BUILDING

The iconic landmark building of the University

EDWARD BOYLE LIBRARY

Includes a postgraduate-only Research Hub

LEEDS DOCTORAL COLLEGE

Coordinates postgraduate research support and activities

THE EDGE

Swimming pool, gym and sports halls

ST GEORGE'S FIELD

A beautiful green space in the heart of campus

LEEDS UNIVERSITY UNION

Shops, cafés, music venues and home to our clubs and societies

First Direct Arena

Leeds' 13,500-capacity music venue

Leeds city centre

Only a 10-minute walk from campus

Leeds train station

Parkinson Building

Leeds Doctoral College

The Edge

Edward Boyle Library

Leeds University Union

St George's Field



IMPORTANT INFORMATION

Information provided by the University, such as in presentations, University brochures and on the University website, is accurate at the time of first disclosure. However, courses, University services and content of publications remain subject to change. Changes may be necessary to comply with the requirements of accrediting bodies or to keep courses contemporary through updating practices or areas of study. Circumstances may arise outside the reasonable control of the University leading to required changes. Such circumstances include industrial action, unexpected student numbers, significant staff illness (where a course is reliant upon a person's expertise), unexpected lack of funding, severe weather, fire, civil disorder, political unrest, government restrictions and serious concern with regard to the transmission of serious illness making a course unsafe to deliver. After a student has taken up a place with the University, the University will look to give early notification of any changes and try to minimise their impact, offering suitable alternative arrangements or forms of compensation where it believes there is a fair case to do so. Offers of a place to study at the University will provide up-to-date information on courses. The latest key information on courses, entry requirements and fees can be found at www.leeds.ac.uk/pgp. Please check this website before making any decisions.

**CONTENTS**

GO TO THE NEXT LEVEL	5	CAMPUS LIFE	47
Welcome to Leeds	6	Students' union	48
		Sport and fitness	49
REDEFINING EXCELLENCE	9	A creative and cultural campus	50
Research with impact	10	Wellbeing and support	52
Tackling global challenges	12		
Working together with experts	14	NEXT STEPS	55
Collaborative working	16	Fees and funding	56
Making your contribution	18	Finding research opportunities	58
Leading research facilities	22	How to apply	60
Academic study facilities	24		
		YOUR STUDY OPTIONS	63
DEVELOP AND CONNECT	27	About your research degree	64
Develop your professional profile	28	Research areas	65
		MAPS AND HOW TO FIND US	72
YOUR RESEARCH COMMUNITY	33		
A welcoming community	35		
		CITY LIFE	39
Our city	40		
Living in Leeds	44		

GO TO THE NEXT LEVEL

Challenge yourself at a leading
research-intensive university.
Become an expert in your field.
Grow professionally and personally.

Top 100
university in
the world

QS World University
Rankings 2020



WELCOME TO LEEDS

Be part of a prestigious, research-intensive university in one of the UK's most diverse cities. We're engaged in world-class research across a wide range of disciplines. Our postgraduate researchers are an integral part of this, helping push back the boundaries of knowledge in new and exciting ways.

Find out more about our research and the people who carry it out, and be inspired to come and be part of this amazing adventure.

We are:

- one of the top 100 universities in the world (QS World University Rankings 2020)
- 'world leading' or 'internationally excellent' in more than 80% of our research (REF 2014)
- one of the 40 most international universities in the world (Times Higher Education World University Rankings 2019)

Join our thriving research community, with more than 3,000 postgraduate researchers at its heart. Develop your subject expertise and professional profile to excel in your chosen profession.



VISIT US

You can find out more about our research, meet our academic staff and chat to some of our current postgraduate researchers at our postgraduate open day.

Postgraduate open day
7 February 2020

Or make an appointment with our Doctoral College to discuss being a researcher at Leeds.
doctoralcollege@leeds.ac.uk

MEET US

Meet us at a postgraduate study fair, held throughout the UK.
www.leeds.ac.uk/postgraduatefairs

Or, if you're not in the UK, find out when a University of Leeds representative will be visiting your country.
www.leeds.ac.uk/visitstoyourcountry

TALK TO US

+44 (0)113 343 2336
study@leeds.ac.uk

CONNECT WITH US

   /universityofleeds
 @UniversityLeeds

REDEFINING EXCELLENCE

Work with leading thinkers, push the boundaries of knowledge, contribute to research that matters.

Over 80%
of our research is rated
'world leading' or
'internationally excellent'

REF 2014



RESEARCH WITH IMPACT

Leeds is one of the UK's leading research universities and one of the top 100 universities in the world (QS World Rankings 2020). We're at the forefront of knowledge across a range of disciplines. We need researchers at all levels, with exciting new ideas and approaches.

The University of Leeds is a place where world-leading research can flourish. Established in 1904, we're one of the largest research-intensive universities in the UK. With more than 80% of our research rated 'world leading' or 'internationally excellent' (REF 2014), we're in the UK top 10 for research impact – impact on the economy, public policy, civil society, culture and more. UKRI, the UK's biggest public funder of research and innovation, chose to hold its first anniversary event at the University in 2019.

We're a founding member of the prestigious Russell Group of research-intensive universities and have twice been awarded the Queen's Anniversary Prize, the country's highest accolade for an academic institution.

1. Cryo-electron microscope in the Astbury Centre



“If you want to be part of a community of research excellence that will encourage, stimulate, challenge and support you, the University of Leeds is ready to welcome you. Our research is tackling big global and societal challenges and helping improve lives. Come and join us and help change the world.”

Professor Lisa Roberts
Deputy Vice-Chancellor: Research and Innovation

RESEARCH THAT MATTERS

Our researchers:

- are finding new ways to combat brain cancer through the use of viruses
- have created the world's thinnest freestanding gold, with the potential to unlock new technologies, including in medicine
- co-authored and provided key evidence in the report which informed the UK government's commitment to net zero emissions by 2050
- are using cutting-edge electron microscopy to find new ways to stop plant viruses destroying crops

Top 10
UK university for
research power

REF 2014

A GLOBAL INSTITUTION

The University was recognised as one of the 40 most international in the world in the Times Higher Education World University Rankings 2019.

You'll work with outstanding students, researchers, academics and research partners from all over the world. Around half our postgraduate researchers come from outside the UK and our staff are from over 90 different countries. Over half our research outputs come from international collaborations.

FUNDING AND INVESTMENT

Our work attracts significant funding – £137m in research grants and contracts 2017/18. Our expertise in interdisciplinary international development projects has made us one of the most successful UK universities in securing funding from the Global Challenges Research Fund and the Newton Fund. Over the last 5 years the University received more than £45m funding from the Global Challenges Research Fund.

We want to attract tomorrow's researchers to Leeds. We offer a range of scholarships to try to ensure your ability to study with us depends on your talent, not your circumstances (see page 57).

TACKLING GLOBAL CHALLENGES

Researchers at Leeds are addressing some of the world's biggest challenges. Our discoveries are making a real difference to society. Here is some of our research that's making an impact.



SHAPING OUR FUTURE WITH DATA

Helping drive policy reform to tackle inequalities and improve health nationally as part of the SIPHER consortium.



DEVELOPING SOLUTIONS FOR A CHANGING CLIMATE

Estimating sea level rises more accurately using satellite data to generate information on polar ice thickness and melting rates.



DELIVERING A SUSTAINABLE ENERGY FUTURE

Advancing research into alternative energies and reduced emissions through our Energy Leeds multidisciplinary research group.



VIEWING GLOBAL CHALLENGES THROUGH A CULTURAL LENS

Supporting young conflict survivors across the world through an Arts and Humanities Research Council-funded project that helps them use creative media to understand conflict and share their experiences.



PROMOTING FOOD SECURITY AND SUSTAINABILITY

Leading a £9m research programme, AFRICAP, to improve policymaking and develop sustainable and productive agriculture systems in the face of climate change.



ENABLING ADVANCES IN GLOBAL HEALTH

Helping the worldwide fight against drug-resistant superbugs by reducing prescribing of unnecessary antibiotics to children in rural China.



CREATING THE CITIES OF TOMORROW

Leading a £4.2m national research project to create self-repairing cities by developing robots to fix utility pipes, street lights and roads with minimal disruption.



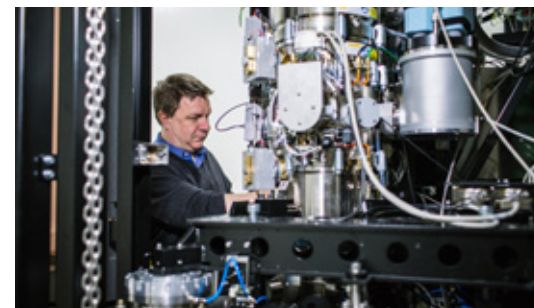
UNDERSTANDING SOCIAL CHANGE

Keeping girls in Uganda safe from exploitation through a project to address multiple barriers to schooling.



SAFEGUARDING GLOBAL WATER RESOURCES

Making clean water more accessible worldwide through our work with G₂O Water Technologies to test its graphene water filter technology and bring a cheaper method of water treatment for developing countries closer to market.



COMBATting GLOBAL DISEASES

Making advances in treatments for Parkinson's, Alzheimer's and diabetes by using cutting-edge equipment to investigate amyloid proteins.

Discover more about our leading research at www.leeds.ac.uk/research



WORKING TOGETHER WITH EXPERTS

We bring together researchers from different disciplines and backgrounds to combine disciplinary excellence and create an environment in which world-leading research can flourish.

INTERDISCIPLINARY SOLUTIONS

Our research tackles the big issues affecting today's world. Imagine chemotherapy treatment with fewer side effects, self-repairing cities, and easing global water scarcity. Our researchers are engaged in pioneering research – taking creative strides to build a better world.

The world faces large and complex problems. In our drive to find answers, we bring together wide-ranging expertise to create extraordinary solutions right here on campus. We are:

- pioneering a technique to avoid rejection of transplant tissue by combining medical engineering and medical immunology expertise at our Institute of Medical and Biological Engineering
- investigating with multiple partners how immersive technologies can help the public engage with history, such as the Virtual Holocausts Memoriscapes Project
- developing the use of microbubbles to deliver chemotherapy with fewer side effects, bringing together research expertise from physics, engineering and medicine
- using big data to improve health outcomes for heart attack survivors who develop other diseases



WORKING TOGETHER TO TACKLE COMPLEX ISSUES

The University works closely with a range of partners, including:

- industry and business to develop innovative commercial solutions
- charities and the health sector to increase understanding of health challenges
- government agencies and NGOs to provide expertise and influence policy
- academic colleagues nationally and internationally to achieve more together

Nexus, our new £40m innovation hub, connects business with our world-leading researchers, facilities and talent. It brings together business and academic minds to solve complex challenges, while delivering economic and societal impact.

1. Professors Eileen Ingham (Medical Immunology) and John Fisher (Mechanical Engineering) in the Institute of Medical and Biological Engineering



RESEARCH PARTNERSHIPS

The University is a founding member of the Worldwide Universities Network (WUN), a network of 23 research-intensive universities over six continents. We'll encourage you to take part in collaborative programmes and you'll have opportunities to be mentored by established experts in your field.

www.wun.ac.uk

The University belongs to the N8 Research Partnership of the eight most research-intensive universities in the North of England, which aims to maximise the impact of its research, focusing on two research themes.

www.n8research.org.uk

We are also part of the White Rose University Consortium, a strategic partnership between the leading research universities of Leeds, Sheffield and York, which involves cooperation on a number of levels, including a collaborative and global approach to doctoral training.

www.whiterose.ac.uk

The University is a partner in a number of UK Research Councils-funded Doctoral Training Partnerships (DTPs) across a wide range of disciplines. DTPs often offer interdisciplinary collaboration and placement opportunities. We also host several industry-focused Centres for Doctoral Training (CDTs). Read more at

www.leeds.ac.uk/externallyfundedphds

COLLABORATIVE WORKING

We'll encourage you to make the most of the collaborative opportunities all around you. Whether it's combining diverse expertise to solve complex problems or sharing research within your discipline, a new perspective can be revolutionary.

The University is home to several interdisciplinary centres, like the Priestley International Centre for Climate or the Astbury Centre for Structural Molecular Biology, which pool interdisciplinary expertise to push the boundaries of knowledge. Several prestigious UK Research Councils-funded Doctoral Training Partnerships and Centres for Doctoral Training are also currently based at Leeds.

Whatever your specialism, there will be opportunities for you to work with others in your discipline and across disciplines, through research groups, conferences and informal networks and socials, within the University and in other institutions.

PUSH

THE BOUNDARIES

“By collaborating, you can accumulate data a lot more quickly than you could on your own. I was fortunate enough to publish very early in my PhD and this led me to work with researchers from across Europe. Our equipment and expertise at Leeds allowed us to contribute a previously missing part to their research.”

Daniel Hurdiss

Structural characterisation of viral pathogens using cryo-electron microscopy.

Now Postdoctoral Fellow at Utrecht University, The Netherlands.

Pictured with PhD supervisor Professor Neil Ranson in the Astbury Centre for Structural Molecular Biology

Read more about Daniel's experience of collaborative working at www.leeds.ac.uk/danielhurdiss



MAKING YOUR CONTRIBUTION

Studying for a research degree will challenge you intellectually and push you to new levels. It's hard work, but the rewards can be huge. In the end you'll be an expert in your field.

Your research will make a meaningful contribution to the University's research excellence – over half our submissions to REF 2014, the most recent Research Excellence Framework exercise, included contributions from PhD researchers.

Postgraduate researchers are at the heart of the University's research. Choose Leeds and you'll join a community of more than 3,000 postgraduate researchers.

Whatever your field of interest, as a postgraduate researcher you'll be part of a community of researchers at the forefront of their subject who will challenge, inspire and support you.

The scale and quality of our research gives you the opportunity to be part of internationally important work. You can work on existing projects such as sustainable food sources and climate change, or conduct your own independent research project. And you'll find all the facilities and support you need to excel during your time here.



YOUR SUPERVISOR AND YOU

Finding the right supervisor for your project is a key part of choosing your research degree. Supervisors draw on their own experience to guide your work, encourage you and advise you on the direction of your research. They will be with you from the development of your research plan, through the creation of your thesis to preparing you for the viva – the final stage of your PhD.

You'll usually have at least two academic supervisors, who will be at the forefront of their discipline and will have the relevant specialist knowledge for your project. They'll provide support and encouragement, whilst empowering you to become independent in your working and thinking. They'll challenge your ideas, offer advice on training and development, review your progress, and provide guidance and feedback on your work.



WORK WITH EXPERTS

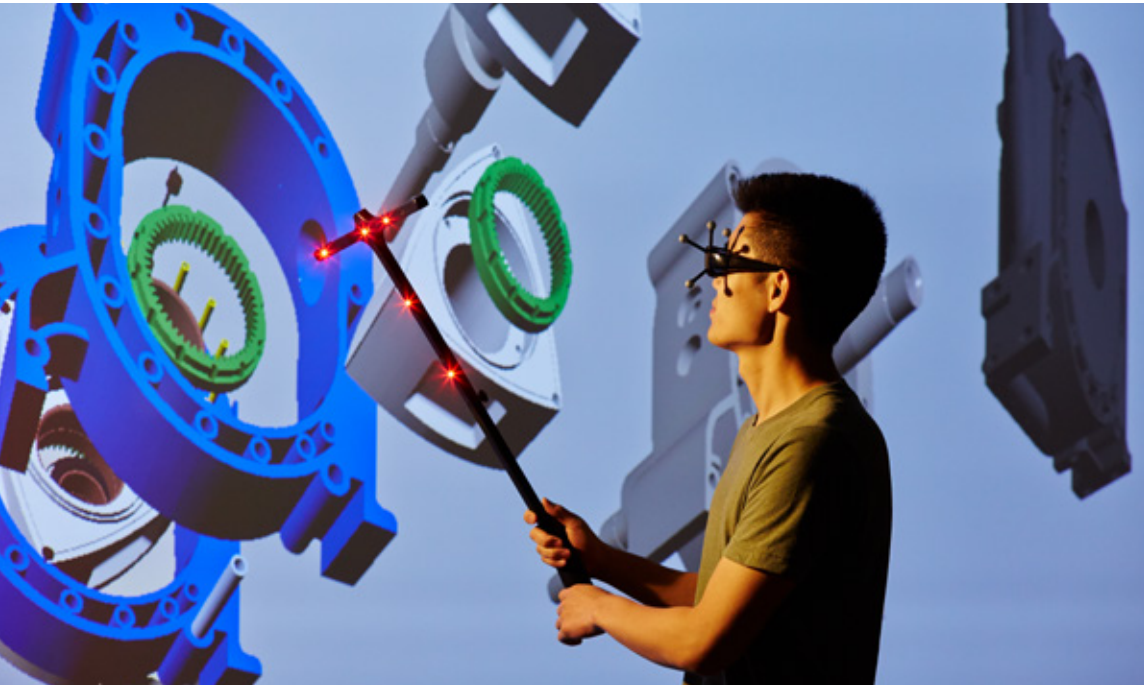
“My research is arts marketing and unpicking the term ‘cultural value’. I couldn’t have chosen a better place to study this. For example, the new Centre for Cultural Value is based at the University and the academics I work with bring in experts from the sector to teach and work alongside, and some have their own companies too. They aren’t just reading about art, they’re experiencing it.”

Emma McDowell

**Reframing theatre marketing:
from transaction to enaction**

Pictured in the University’s own
theatre complex, stage@leeds

 Read more from Emma about her experience of working alongside experts at www.leeds.ac.uk/emmamcdowell



LEADING RESEARCH FACILITIES

Our outstanding facilities provide an excellent platform for your research and enhance your academic experience. Some of the UK's leading research centres are based at the University and we're investing heavily to realise the potential of new technologies.

We're developing one of the most advanced centres in the world for high speed rail planning, design, construction and manufacturing. Our Bragg Centre for Materials Research brings together scientists and engineers across a wide range of disciplines.

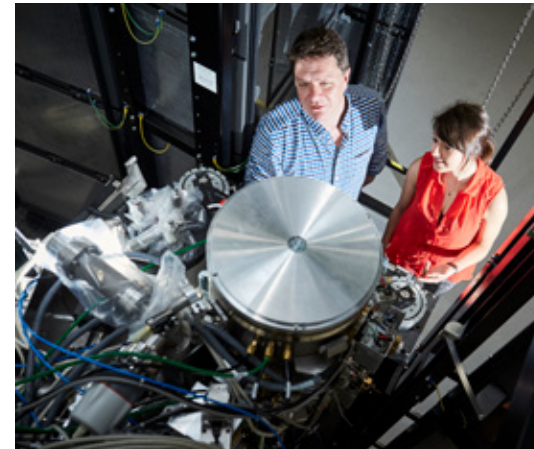
Here are just some of the facilities at Leeds that may help shape your research:

NATIONAL FACILITY FOR INNOVATIVE ROBOTIC SYSTEMS

We are home to the National Facility for Innovative Robotic Systems, including the most advanced suite of robot-building equipment in the UK, the latest 3D printing and high-precision assembly technologies.

M&S COMPANY ARCHIVE

The M&S Company Archive houses over 71,000 items, including business papers, advertising materials and merchandise. It supports research across a wide range of disciplines and the University's partnership with Marks and Spencer offers exciting opportunities for collaboration. The Archive actively engages with research and offers a wealth of primary material to support postgraduate research.



ASTBURY CENTRE

Our Astbury Centre for Structural Molecular Biology has some of the world's most powerful cryo-electron microscopes, allowing molecular structure to be seen in unprecedented detail and enabling us to develop new treatments to combat global disease.



SPECIAL COLLECTIONS

From medieval manuscripts and a First Folio of Shakespeare's plays to valuable business archives, the University's Special Collections is a unique resource for primary research. Ours is the only library with five collections awarded 'designated status' by Arts Council England, in recognition of their outstanding national and international importance.



CENTRE FOR IMMERSIVE TECHNOLOGIES

Our Centre for Immersive Technologies works in the areas of human-centred design, education, decision-making, cultural engagement and improving wellbeing, helping companies and organisations use virtual reality and augmented reality.



CENTRE FOR CULTURAL VALUE

The University will be home to the UK's first Centre for Cultural Value. It will bring together diverse artists, researchers and external partners to advance understanding of the value and unexplored potential of the UK's arts and culture sector.



ACADEMIC STUDY FACILITIES

Our excellent facilities will support your research.

UNIVERSITY LIBRARY

The University Library is one of the major academic research libraries in the UK – a premier resource to underpin your research.

The Library combines a massive and ever-expanding collection of print and online resources, and includes rare book and manuscript collections.

You'll benefit from:

- expert support in literature searching, referencing, bibliometrics, open access and research data management
- four libraries on campus, open throughout the year, at a wide range of times
- easy access to more than three million print items and thousands of online library resources
- different working environments, including spaces for group study and silent individual study, as well as cafés for breaks
- IT zones and study facilities equipped with the latest technology

library.leeds.ac.uk



“As a medievalist, Leeds is one of the top places in the country to study. One of the reasons is the extremely well-stocked libraries. The scientists have their laboratories, historians have the library – the library is where we do the actual research.”

I've been to conferences and shared my research with academics from all over the world. It's expanded my reach and network in ways that I couldn't have done if the University didn't have these facilities.”

James Titterton

Trickery and deception in medieval warfare

Read more about how Leeds' well-stocked libraries have been crucial to James's research at

www.leeds.ac.uk/jamestitterton

POSTGRADUATE RESEARCH HUB

The postgraduate-only Research Hub in the Edward Boyle Library is designed to meet your needs.

It offers:

- extra-large study desks with wi-fi, individual lighting and power sockets – especially useful in the writing-up stages of your research
- space for individual and group work
- bookable individual and group study rooms, with large LED screens
- lockers for your convenience

Our expert library staff are here to help you too, online, in person and through workshops and events. They can advise and support you with literature searching, referencing, EndNote, open access publishing, increasing citations and research data management.

library.leeds.ac.uk/researcher

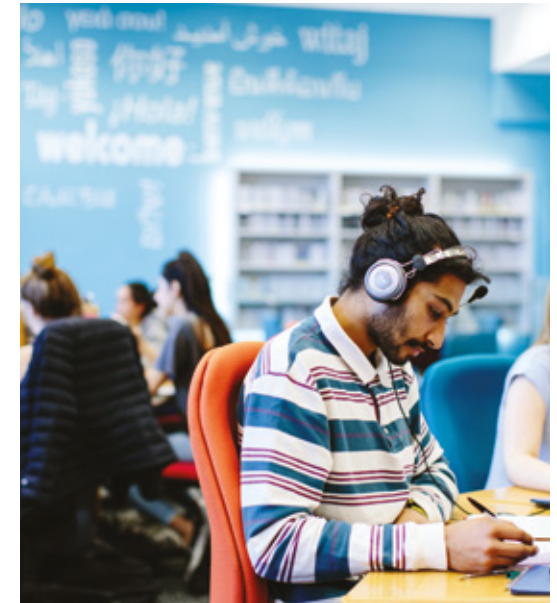
COMPUTERS AND IT

Through your University account, you'll be able to access the technologies and services to support your studies.

You'll benefit from:

- a wide range of standard and specialist software and services, providing access to all the research and industry-focused facilities you'll need
- free high-speed wi-fi across campus
- a suite of tools and services provided through Microsoft Office 365, seamlessly linked to your University account and securely available from anywhere in the world
- free access to licensed copies of Office ProPlus for you to use at home or on the move
- personalised content (like your library record) on your phone through the UniLeeds app
- IT help and support through our webpages and from our Service Desk by phone, email or in person
- teaching spaces with traditional computer-supported classrooms and flexible learning environments for personal and group study

it.leeds.ac.uk



LANGUAGE LEARNING

If you want to learn a different language, our Language Zone has learning materials in more than 50 languages. It has a dedicated space where you can study independently, with access to books, magazines, audio, video and language learning software.

You can also practise conversation skills with native speakers through our language exchange, or take part in language groups and workshops.

If English isn't your first language, you can improve your academic English before you start your research with a course at the University Language Centre.

Our pre-sessional English courses will help you prepare for life as a postgraduate researcher in the UK. You'll study with other postgraduate students and you'll be taught by academics who contribute to research into teaching languages.

www.leeds.ac.uk/languagecentre

DEVELOP AND CONNECT

Share your research and connect with experts. Build your profile, networks and skills to shape your future.



DEVELOP YOUR PROFESSIONAL PROFILE

Building your professional profile is a key part of success as a postgraduate researcher. You'll need to develop new skills and networks to share and further your research. We offer connections and training opportunities to help you realise your professional goals, whatever you decide to do next.

Your research degree helps you further develop your skills and expertise. You might access higher-level roles in industry, become a researcher in government or develop an academic career. Whatever your motivation, research study can extend your passion for your subject and push you to reach your potential.

The work is challenging, but we're here to help you succeed and enjoy your time with us. There's support at each step of your PhD, from induction, through transfer to the final thesis writing and viva. We offer extensive professional and career development opportunities, which you can tailor to your individual needs.

MAKING CONNECTIONS

We understand the importance of meeting others in your field, both in advancing your research and your future career. You'll be able to network with colleagues from the University and wider academic community, and industry experts, at national and international conferences and research events. You'll hear about the latest research in your specialism and have opportunities to present and share your own research findings.

Funding may be available from your school or faculty to ensure finance isn't an obstacle to you attending conferences and events.

You may also have opportunities to publish your research and provoke academic debate. Your supervisor will help point you in the right direction and our research collaborations mean you are well placed to meet academic and industry experts. You may also have chance to work with industry on projects and placements, and with large-scale collaborative research partnerships, widening your professional network.

A global network of Leeds graduates

As a researcher at Leeds, you'll be able to tap into one of the biggest alumni communities of any UK university. It's a global network of over 265,000 people in more than 190 countries, all with a lifelong connection to the University of Leeds and to each other.

Through the Leeds Network, our online career networking tool, you can make contact with alumni and benefit from practical careers advice and mentoring.

Developing commercial opportunities

The University's commercialisation team supports the activities of our researchers, identifying, evaluating and developing commercial opportunities from research conducted at the University.



“Working with other postgraduate researchers is a great way to collaborate across different departments, and get a fresh perspective on a research area.”

I've recently published a book chapter with my supervisor, which included research I conducted, and I'm collaborating with someone from a different department on a new paper. I get a lot out of talking to people about ideas and I love the research process.”

Brendan Lawson

Researching the use of statistics by UK news media covering humanitarian crises

Read more about Brendan's experience of building his profile at www.leeds.ac.uk/brendanlawson



“I really enjoy working with PhD researchers. We spend three years together pushing the boundaries of knowledge and I introduce them to a network of colleagues and like-minded researchers within and beyond this vibrant research-intensive University.”

Dr Gary Chambers
Professor of Education



Specialist training

To help you develop skills relevant to your research and future career, you'll have access to a whole range of workshops, courses and seminars. Specially designed for postgraduate researchers, these are run by our IT, Library and Organisational Development and Professional Learning teams and by your department or graduate school.

Your online Training Plan is the cornerstone of your professional development. It's agreed between you and your supervisor and is based on a detailed training assessment. It reflects your previous experience and personal and professional aspirations. It includes both specific research skills and broader experiences, like challenging ideas and presenting at conferences.

An online record system, the Graduate Record of Achievement and Development (GRAD), helps you plan which conferences, courses and workshops to attend. It records meetings with your supervisors and training taken, with milestones to track your progress right up to completion of your research degree.

To develop your teaching skills, we offer a series of workshops which focus on the essentials for demonstrating, lecturing, small-group teaching and assessing student work. There are also opportunities to develop your teaching practice through lectures and practical sessions.

Personal and professional development is available to you through a range of training in areas such as leadership, presentation skills, project management and team working.

BUILDING YOUR TRANSFERABLE SKILLS

A research degree can take you to the forefront of your field, and we offer academic and technical training to support each stage of your research.

As a postgraduate researcher, you'll gain skills that will be invaluable, whatever your chosen career. You'll increase your ability to understand and solve problems, analyse and communicate complex information, work independently and as part of a team, manage your time effectively and many other skills employers look for.



Career planning

Whatever your next step, our Careers Centre offers a range of events, online resources and personal advice and support. We'll help you understand your strengths and market yourself effectively.

We provide:

- individual career guidance
- CV writing advice
- job search, job applications and interview skills
- a programme of workshops specifically for postgraduate researchers

careerweb.leeds.ac.uk/researchers

Discipline-specific advice and employability events are also offered, often through your academic school.

These could include:

- advice about typical career paths and roles, writing your CV and job applications
- seminars with employers and alumni
- mentoring schemes

Enterprise at Leeds

Leeds' award-winning student enterprise opportunities are also available to you as a postgraduate researcher. Our business start-up support service, Spark, can help you develop your idea into a viable business. Gain business advice, mentoring and access to funding, networking events and bespoke workshops to help you through your entrepreneurial journey. You could apply for a £3,000 Enterprise Scholarship to help with business, training and other start-up costs, and you could win up to £2,000 to get you started in our annual Business Plan Competition.

www.leeds.ac.uk/enterprise

YOUR RESEARCH COMMUNITY

Be part of our diverse, welcoming
and supportive community.

KNOW NO BOUNDS

“Leeds is a fantastic city, it’s a very welcoming place. I’m from Bangladesh, and the International Student Office helped me bring my family with me. When I arrived, everything was really well organised. After all the help the University gave me, I became a student ambassador, using my experience to give advice to new international students. I felt like I’d made an impact, and made people feel part of the community.”

Rumana Hossain
Experience of Bangladeshi academics
on return from study abroad
Pictured in a café at the University



Learn more from Rumana about her experience of being part of our global family at www.leeds.ac.uk/rumanahossain

A WELCOMING COMMUNITY

Your time with us is about more than your academic research and professional development. When you come to Leeds you’re joining a vibrant and welcoming community of researchers from around the world. You’ll find a host of opportunities to connect with others academically and socially, and there’s help on hand if you need it. Whatever your specialism, don’t worry about feeling isolated.

LEEDS DOCTORAL COLLEGE

Our Doctoral College supports you throughout your postgraduate research journey. It brings together all the support services and opportunities to enhance your research, your development, and your overall experience.

When you join us at Leeds, you’re joining a community of postgraduate researchers, all working in different areas but sharing the experience of being a researcher at Leeds. The Doctoral College aims to support you and celebrate your achievements.

We run regular drop-in and training sessions, and organise seminars and other events. Keep up to date with postgraduate researcher events and news through our monthly newsletters. Attend one of our informal ‘Research Nights’ sessions, where you can meet your fellow-researchers, learn about other developing research, and maybe even be a speaker yourself.

www.leeds.ac.uk/doctorscollege

Leeds Doctoral College Showcase

Hone your presenting skills at our annual postgraduate research conference, which celebrates the outstanding contribution of our researchers. Conference competitions include the ‘three-minute thesis’, research poster and research image competitions and Postgraduate Researcher of the Year, with prizes awarded by the Vice-Chancellor.

www.leeds.ac.uk/doctorscollegeshowcase



CONNECTING WITH OTHERS

Besides the opportunities through our Doctoral College, you'll find there are multiple ways to connect with your fellow-researchers at Leeds.

You will:

- have access to workspace in a shared office and/or laboratory. You'll work alongside researchers, academics and support staff and quickly become part of your school's community
- be part of a research group and, beyond this, an academic team. Their social events and coffee sessions are a relaxed way to meet and share ideas with academic colleagues
- be part of a faculty graduate school which will support you and offer opportunities to connect across schools and departments through conferences, seminars and socials. Your graduate school staff will advise you on everything from registration to examinations, and can point you to the wide range of University support services
- have access to University-wide seminars and events, where you can network and discuss your work with academics and fellow-researchers



SUPPORT FOR INTERNATIONAL RESEARCHERS

As one of the most popular destinations in the UK for international researchers, you can be confident we've got the knowledge and experience to help you. Our International Student Office provides specialist immigration advice along with ongoing support.

Before you arrive, we'll help you prepare for university life. We can advise you about immigration and other UK regulations, travel to the UK, opening a bank account and other things to help you adapt to life in Leeds.

We'll continue to be here for you after you've arrived too, with year-round support to help you adapt and settle in to life in the UK. Attend a drop-in session, book a private appointment or visit the enquiry desk for general information and guidance. We hold welcome and orientation sessions all year round for new international researchers and their partners.

There are also activities and opportunities to socialise and network with other UK and international researchers and their families.

www.leeds.ac.uk/internationalstudents

A GLOBAL INSTITUTION

You'll join more than 9,000 international students from over 170 countries and staff from more than 90 countries, with all the richness of perspectives and insights this brings.

There are lots of opportunities to socialise with people from different countries and cultures. Take advantage of the weekly Global Café and other Global Community activities. Join one of the international student societies run through Leeds University Union.

LINK TO LEEDS

Discover more about the Leeds student experience. Talk directly to some of our current international postgraduates about being a postgraduate researcher here. Connect with our Link to Leeds ambassadors through live chats, email, instant messaging or social media.
www.leeds.ac.uk/linktoleeds

CITY LIFE

Leeds has one of the largest student communities in the country, making it an exciting place to live and learn. It also has lots of green space and nearby countryside to escape to.

Explore all the great things to do in Leeds at www.visitleeds.co.uk



OUR CITY

Leeds is a lively, multicultural city in the centre of the UK, with the University campus just a 10-minute walk from the city centre.

We have everything you'd expect from one of the UK's largest and fastest-growing cities and we're surrounded by beautiful, accessible countryside.

If you're relocating to Leeds we're confident it won't be long before you're calling it home.

Read more about what the city has to offer at www.leeds.ac.uk/leedsandyorkshire



SHOPPING

Leeds is famous for its historic shopping arcades, including the Victoria Quarter, Queen's Arcade and Thornton's Arcade.

You'll find some of your favourite designer and high-street brands under one roof in Trinity Leeds.



FOOD AND DRINK

Leeds has a thriving independent food and drink scene, hosting the popular Leeds Indie Food festival each year.

You'll find everything from quirky cafés and beer halls to rooftop bars with views of the city, as well as restaurants that feature in the Michelin Guide.

MUSIC

Leeds nightlife is legendary, with clubs and bars offering music to suit all tastes.

First Direct Arena attracts some of the world's biggest artists to its 13,500-capacity theatre-style venue.



ARTS AND CULTURE

Leeds is one of the few cities outside London to have resident opera and ballet companies.

You'll find several theatres, art galleries and museums, including The Grand Theatre, the Carriageworks, Leeds Playhouse, Leeds City Museum and Leeds Art Gallery.



SPORT

The famous Emerald Headingley Stadium is home to Leeds Rhinos rugby league and Yorkshire Carnegie rugby union teams, Yorkshire County Cricket Club and international Test Matches.

Leeds United Football Club is based at nearby Elland Road Stadium.



FURTHER AFIELD

Leeds has amazing parks and spaces such as Roundhay Park, Temple Newsam, Harewood House and Kirkstall Abbey.

You'll find traditional towns and cities nearby, like York, Ilkley, Harrogate, Saltaire and the village of Haworth, home of the Brontës.

Explore Yorkshire's stunning coastline, plus the Yorkshire Dales, the North York Moors, the Lake District and the Peak District.





LIVING IN LEEDS

Leeds is a great place to live, with a wide range of accommodation. Whether you're looking for a flat, studio, shared house or family accommodation, we're confident you'll find something to meet your needs.

PRIVATE ACCOMMODATION

Leeds has a range of good-quality private accommodation to suit all lifestyles and budgets.

The city centre offers smart, modern apartments perfect for city living. Suburbs such as Chapel Allerton and Horsforth with their local amenities, bars and restaurants are popular with young professionals. Headingley and Hyde Park are just a short walk or bus ride from campus and are popular with both students and academics.

If you are relocating with your family, you will find that Leeds has many family-friendly amenities and activities available alongside good schools. Many suburbs of Leeds offer semi-detached and detached family houses. There are lots of parks and green spaces and a number of well-performing schools.

Independent help and advice on all aspects of private accommodation is available from:

- Unipol, a student housing charity that works closely with the University
- the independent advice centre in the students' union

www.unipol.org.uk

www.luu.org.uk/student-advice



UNIVERSITY ACCOMMODATION

Our University-owned accommodation is close to campus and the city centre. We offer a range of different residences and contract lengths, as well as flexible payment methods. Our main residences exclusively for postgraduate and mature students are Blenheim Point, Grayson Heights, Royal Park Flats and St Mark's Residence.

Your rent includes all energy charges, internet access, contents insurance and Edge Club (gym and sports) membership at The Edge (not included in family or summer accommodation).



We have a very limited amount of postgraduate accommodation. We're sorry we probably won't be able to offer University accommodation if you're a UK or EU researcher. But don't worry, there's plenty of good quality private housing in Leeds.

New, single international postgraduates who apply before the deadline are guaranteed University accommodation.

accommodation.leeds.ac.uk

Families

The University has a limited amount of family accommodation.

accommodation.leeds.ac.uk/family

*Leeds city centre –
one of the UK's Best
Places to Live*

The Sunday Times 2019

CAMPUS LIFE

Our vibrant campus on the edge of Leeds city centre has all the amenities and services you need for the best possible experience during your time here.



STUDENTS' UNION

As a postgraduate researcher at Leeds you'll join one of the best and most active students' unions in the country – Leeds University Union. It offers great services, support and opportunities, and lots of places to meet and relax. It's also home to over 300 clubs and societies, including a dedicated postgraduate society.

Leeds University Union hosts activities exclusively for postgraduates, as well as encouraging you to make full use of the general events programme. There are also volunteering opportunities and community projects you can get involved in.

The Union building is at the heart of campus. It contains a number of cafés, bars and food outlets, as well as performance and meeting spaces. You can buy most things there – from your everyday groceries, health food and University clothing to stationery and cards. There's even a farmers' market right outside the Union building every Monday during term time. www.luu.org.uk



SPORT AND FITNESS

Whatever your level of fitness, you'll find lots of opportunities to keep healthy and get active.

INDOOR FACILITIES

The Edge, our indoor facility, offers excellent fitness, sport and wellbeing opportunities, all located on campus.

Facilities include:

- 250-station state-of-the-art fitness suite, with the latest Technogym equipment and Sky TV
- 25m eight-lane swimming pool
- sauna and steam room
- squash courts
- strength and conditioning room
- three studios offering over 220 exercise classes a week in term time, and virtual classes on demand
- personal training studio
- climbing wall
- swimming lessons, and courses including self-defence, squash and strength training

sport.leeds.ac.uk/the-edge



OUTDOOR FACILITIES

We also have excellent outdoor facilities at nearby Sports Park Weetwood and Bodington playing fields, including a 1.6km outdoor-lit cycling circuit. Two outdoor centres in the Lake District and the Yorkshire Dales offer hiking, caving, mountain biking and climbing.

sport.leeds.ac.uk/facilities

CLUBS, LEAGUES AND ACTIVITIES

The sports clubs run through Leeds University Union are another way to get involved. With more than 60 sports clubs, you can be sure there's a club for you. Our social leagues are a great way to play competitively against other student or staff teams, and our weekly social sport sessions offer non-competitive fun without a regular commitment.

Our Get Out, Get Active programme allows you to enjoy a range of physical activities and explore amazing countryside through weekend walks.

sport.leeds.ac.uk



A CREATIVE AND CULTURAL CAMPUS

There's a host of opportunities to enjoy the arts without leaving campus, with performances, galleries, archives and artworks on your doorstep.

You can also take advantage of the unique cultural heritage hosted on campus, including the M&S Company Archive and our Special Collections.

Our Cultural Institute brings together academics and partners from across the arts and beyond, aiming to widen cultural opportunities on campus and further afield.

Find out more at
www.leeds.ac.uk/aroundcampus



TREASURES OF THE BROTHERTON GALLERY

The Gallery displays treasures from the University's world-famous Special Collections. Highlights include a 4,500-year-old Babylonian clay tablet and original material written by the Brontës, along with medieval manuscripts and rare books from around the globe. The Gallery is free and open to all.



STAGE@LEEDS

We're lucky enough to have our own theatre complex, stage@leeds, which is licensed for the public and offers a range of performances from professional touring companies, as well as showcasing the talent of our students.



THE STANLEY & AUDREY BURTON GALLERY

Our art gallery displays works from the University Art Collection dating from the 17th century to the present day. It hosts a series of innovative and contemporary art exhibitions, as well as a special exhibition showing work by our recent graduates. The Gallery is accredited by Arts Council England and is free and open to all.



PUBLIC ART TRAIL

This trail guides you around the University's impressive collection of public artworks across campus, some of which have been designed and created by our own students.



INTERNATIONAL CONCERT SERIES

This varied programme of free performances and recitals covers jazz, folk and traditional music, classical, contemporary and avant-garde, as well as popular music. The University's Great Hall is also one of the venues for the renowned Leeds International Piano Competition, which takes place every three years.



M&S COMPANY ARCHIVE

Housed in the striking, purpose-built Michael Marks Building on campus, the living M&S Company Archive provides a fascinating insight into a national institution and a unique research resource for our students.

WELLBEING AND SUPPORT

There are lots of resources and information to help and support you through your time at Leeds. Your faculty graduate school and the Doctoral College will be able to point you to all the support services at the University.

You'll find quick links to useful information on our students' website including money advice, health concerns, disability support, and much more.

students.leeds.ac.uk/researchdegrees

STUDENT SERVICES CENTRE

Once you've started at Leeds, our Student Services Centre can help and advise you on anything – from accommodation and registration to fees and funding, and everything in-between.

students.leeds.ac.uk

INDEPENDENT STUDENT ADVICE

Student Advice, a professional, confidential service run by Leeds University Union, can help you with any problems you face in your life as a student. It specialises in housing, money and academic concerns, but the team can support you with anything and all their help is free and completely independent of the University.

www.luu.org.uk/student-advice

STUDENT COUNSELLING, WELLBEING AND MENTAL HEALTH SUPPORT

There may be times when stress, emotional difficulties or upsetting life events make it harder to cope academically or personally. At Leeds you can access free professional and confidential counselling, wellbeing and mental health support through groups, workshops, single-session consultations, short-term counselling and web-based self-help resources.

If you need longer-term support or treatment, we'll help you identify the most appropriate local NHS or voluntary sector services.

You can also access free online peer and professional support, 24/7, with trained counsellors through Big White Wall. It's completely anonymous and provides a safe space to get things off your chest and help you feel more in control.

If you have an existing moderate to severe and enduring mental health diagnosis, our mental health advisors provide one-to-one support and will work with you to develop an appropriate support plan. They'll also act as advocate between you and the University and liaise with external referral agencies.

students.leeds.ac.uk/supportandwellbeing

SUPPORT FOR DISABLED STUDENTS

If you have a disability, health condition or learning difficulty, you'll be offered a comprehensive range of support services. We'll work with your academic school and other University services to ensure that we meet your needs and put in place any reasonable adjustments.

Support can include drop-in advice and guidance sessions, modified examination arrangements, extended library loan facilities, transcription services, and access to computers with assistive technology. You may need to apply for additional funding to pay for specialist academic-related support and equipment. Our experienced staff can advise you on sources of funding and eligibility, and help you fill in any forms.

You don't need to wait until you start your course to contact us. Get in touch early so we can discuss your needs and arrange the right support for you before you get here.

students.leeds.ac.uk/settingupyoursupport



LEEDS STUDENT MEDICAL PRACTICE

A National Health Service (NHS) practice is located close to campus and specialises in all aspects of student health. Leeds Student Medical Practice offers all the usual family doctor services, plus specialist services such as travel advice and immunisation, contraception and sexual health, and asthma and diabetes management.

www.leedsstudentmedicalpractice.co.uk

If you need a visa to study in the UK, you will have to pay an immigration health surcharge when you make your visa application. This entitles you to health services under the NHS. The surcharge you pay is based on the length of your visa.

www.gov.uk/healthcare-immigration-application

CHILDCARE ON CAMPUS

Bright Beginnings is an award-winning, Ofsted-registered childcare centre, right here on campus. It offers a range of services, including childcare for children aged from three months to five years (preschool) and a playscheme during school holidays for children aged between three and 12 years.

www.brightbeginningschildcare.co.uk



FAITH-BASED SUPPORT AND CONTEMPLATION

There are spaces on campus for prayer and quiet contemplation. If you practise a faith, you can be confident that you will be able to follow your beliefs in Leeds and will find information and support.

students.leeds.ac.uk/prayerandcontemplation

University chaplains, from a range of faith backgrounds, offer a listening ear on any issues you need help with. There are regular group activities, open to everyone – people of faith or no faith – and the chaplaincy can also help you find a local place of worship for your faith.

www.unichaplaincy.org.uk

NEXT STEPS

Choosing the best university for your research degree is an important decision and an investment in your future.



FEES AND FUNDING

Postgraduate research study is a major investment in your future but there's support available to help ease the financial pressure.

FEES

For up-to-date fee information, visit www.leeds.ac.uk/pgrfees

Fees quoted are based on full-time study and apply for each year of the course. If you are studying part-time the fee is normally 50% of the full rate.

International fees are fixed at the point when you start your studies and will not rise in subsequent years, so you can more easily plan your finances at the outset.

Self-supporting postgraduate researchers can pay fees in full at registration, or in two instalments. If paying in two instalments, 50% must be paid when registering and 50% is payable by direct debit from a UK bank account approximately five months after your start date.

In addition to academic fees, you will need to budget for living costs. Get advice on money, budgeting and the cost of living in Leeds at students.leeds.ac.uk/budgetandcosts

POSTGRADUATE DOCTORAL LOANS

The UK government offers Postgraduate Doctoral Loans to eligible students who are self-funding study on a postgraduate doctoral course. You may be able to apply for a loan to help contribute towards course fees and living costs while you study. Postgraduate Doctoral Loans are open to UK and some EU students.

www.gov.uk/doctoral-loan

EXTERNALLY FUNDED RESEARCH OPPORTUNITIES

You could benefit from a funded PhD place along with enhanced training and development through a Doctoral Training Partnership (DTP) or Centre for a Doctoral Training (CDT), which are funded by the UK Research Councils. Work experience and placements may also be available through these routes.

The University leads five CDTs and is a partner in three more.

Read more about all these funded opportunities at www.leeds.ac.uk/externallyfundedphds

UNIVERSITY SCHOLARSHIPS

We want to attract postgraduate researchers with the talent, drive and potential to succeed, whatever their financial circumstances. There are a range of scholarships and awards available to home, EU and international students covering full or partial course fees and/or maintenance payments.

Scholarships are awarded on the basis of academic merit and are very competitive, so it is important you make enquiries and apply to all relevant sources as early as possible.

The University offers Doctoral Scholarships across the full range of disciplines. Individual faculties and departments also offer a number of scholarships and awards. Read more about our scholarship opportunities at www.leeds.ac.uk/researchdegreesfunding

If you are a former undergraduate or Masters student from the University of Leeds, you may be eligible for a 10% alumni tuition fee bursary. To check the latest eligibility criteria and deadlines, visit www.leeds.ac.uk/alumnibursary



TRUSTS, CHARITIES AND FOUNDATIONS

There are many trusts, charities and foundations that award partial funding for postgraduate study.

Useful external sources include:

www.findaphd.com
www.postgraduatelstudentships.co.uk
www.prospects.ac.uk
www.britishcouncil.org
www.researchresearch.com
www.postgraduatesearch.com
www.jobs.ac.uk
jobs.theguardian.com

INTERNATIONAL GOVERNMENT FUNDING

If you are coming to study here from overseas you should also contact your own government agencies, as there may be educational support schemes available which provide funding to study in the UK.

SERVICES FOR INTERNATIONAL SPONSORS

If you're an international sponsor looking to provide funding for a Leeds researcher, we offer a number of specialist services to help you monitor and manage the progress of your sponsored student. To find out more contact internationaloffice@leeds.ac.uk



FINDING RESEARCH OPPORTUNITIES

There are different ways to find your research degree.

You can:

- find an advertised project
- start your own project
- apply for one of our funded training programmes (see page 57)

ADVERTISED PROJECTS

Get an overview of our research areas on pages 65–71 and find the full range of research degrees we offer online at www.leeds.ac.uk/pgr

We have a strong interdisciplinary ethos, with many departments and schools collaborating in a number of research centres and clusters. These act as forums for the generation and development of ideas and they support collaboration.

Many of our current projects are also listed on www.findaphd.com – search 'University of Leeds'.



STARTING YOUR OWN PROJECT

You may want to start your own project. In some disciplines you will need to write a proposal as part of your application (see page 61).

You may already have an idea of the experts within your chosen field you'd like to work with. If you haven't, the relevant graduate school can help you find the best person. Search for potential supervisors on:

- www.leeds.ac.uk/news – find academics taking part in breakthrough research at the University
- www.leeds.ac.uk/faculties – browse our faculty websites, which list their academics.



HOW TO APPLY

Use our online admissions system to apply and track the progress of your application.

1 EXPLORE RESEARCH INTERESTS AT LEEDS

Choose an existing research project or propose your own. Find out about research areas and potential supervisors at www.leeds.ac.uk/pgr

2 CHECK THE ADMISSIONS PROCESS AND REQUIREMENTS FOR YOUR RESEARCH AREA

Check the faculty's webpages and contact the faculty graduate school. Find out about any deadlines and if you need to submit a research proposal with your application. www.leeds.ac.uk/graduateschoolcontacts

3 FIND SCHOLARSHIPS AND SOURCES OF FUNDING

Research your funding options at www.leeds.ac.uk/researchdegreesfunding

4 APPLY

Make sure you have all your supporting documents scanned and ready to upload. Check what documents you need and apply online at www.leeds.ac.uk/pgr/apply

5 GET A DECISION

We will email you to acknowledge your application. After that, you can track the progress online. We will tell you our decision by email.



FUNDING

Securing funding can be difficult, so you'll need to start looking for sources as soon as possible. Normally you need to have received an offer before you apply for funding. Be sure you know about any funding deadlines. Remember, receiving an offer of a study place from us does not imply you will receive funding. Read the information on page 57 and at www.leeds.ac.uk/researchdegreesfunding

RESEARCH PROPOSAL

For some research degrees you need to submit a research proposal as part of your application – the relevant graduate school will advise you.

A research proposal is your opportunity to demonstrate your subject knowledge and how you intend to influence your desired research area. Read our advice about writing a research proposal at www.leeds.ac.uk/researchproposals

INTERNATIONAL APPLICANTS

We have offices in China, India, Japan, Malaysia and Nigeria, as well as a global network of representatives who can advise you about studying at the University. www.leeds.ac.uk/meetus

Our staff regularly travel overseas to meet with prospective students and give advice about being an international student at the University of Leeds. www.leeds.ac.uk/visitsyourcountry

English language requirements

Read about the University's English language requirements and recognised qualifications from other countries at www.leeds.ac.uk/internationalentry

A pre-sessional English course can help you improve your academic English. www.leeds.ac.uk/pgpreessional

Advice from our International Student Office

Our team of immigration experts provides free advice on immigration law and requirements for current and prospective students, and their families. We can assist you with the process of applying for your student visa. www.leeds.ac.uk/immigration

YOUR STUDY OPTIONS

IMPORTANT INFORMATION

Information provided by the University, such as in presentations, University brochures and on the University website, is accurate at the time of first disclosure. However, courses, University services and content of publications remain subject to change. Changes may be necessary to comply with the requirements of accrediting bodies or to keep courses contemporary through updating practices or areas of study. Circumstances may arise outside the reasonable control of the University leading to required changes. Such circumstances include industrial action, unexpected student numbers, significant staff illness (where a course is reliant upon a person's expertise), unexpected lack of funding, severe weather, fire, civil disorder, political unrest, government restrictions and serious concern with regard to the transmission of serious illness making a course unsafe to deliver. After a student has taken up a place with the University, the University will look to give early notification of any changes and try to minimise their impact, offering suitable alternative arrangements or forms of compensation where it believes there is a fair case to do so. Offers of a place to study at the University will provide up-to-date information on courses. The latest key information on courses, entry requirements and fees can be found at www.leeds.ac.uk/pgr. Please check this website before making any decisions.



ABOUT YOUR RESEARCH DEGREE

Studying for a doctorate is for those seeking to push the boundaries of knowledge. You'll need to be passionate about your subject and committed to your studies – a full-time PhD normally takes three years, or five years part time.

If successful, you'll gain a doctorate, one of the highest degrees awarded by universities in the UK. Studying for a research degree enables you to conduct your own supervised research and make your own original contribution to our understanding of the world. On completion of your studies, you'll be required to submit a thesis including sufficient original material, some of which must be considered suitable for publication, and defend this at a viva voce (oral examination).

RESEARCH DEGREES FROM LEEDS

We offer a range of research degrees, with different modes of study available, including full-time, part-time and, in some cases, split-site study. You can also study a PhD by distance learning with our Faculty of Arts, Humanities and Cultures. Part-time study is not available to international candidates studying in the UK on a tier 4 student visa.

Research degrees you can study with us are:

- Masters by Research
- Doctor of Education (EdD)
- Doctor of Philosophy (PhD)
- Doctor of Medicine (MD)
- Professional doctorates
- Split-site PhD programmes
- Integrated Degrees of Doctor of Philosophy and Masters (MA and PhD, MSc and PhD)

Find out more about our different research degrees and what's involved at www.leeds.ac.uk/pgr/researchdegree

RESEARCH AREAS

Check online for a complete and up-to-date picture of our research opportunities and expertise. Here is an overview:

Accounting and Finance

business.leeds.ac.uk/phd

Asset Pricing Models and Financial Markets
Banking and Investment
Behavioural Finance
Credit Management
Historical Perspectives in Accounting and Finance
Market Based Accounting and Decision Making
Organisations: Ownership, Governance and Performance
Pensions and Employee Benefits

Biological Sciences

biologicalsciences.leeds.ac.uk/research-degrees

Biomedical Technology
Biotechnology
Cancer
Cardiovascular
Cell and Organismal Biology
Ecology and Evolution
Heredity, Development and Disease
Integrative Membrane Biology
Microbiology
Neuroscience
Plant Sciences
Sport and Exercise Sciences
Structural Biology

Chemical and Process Engineering

eps.leeds.ac.uk/chemical-engineering

Advanced Engineering Materials and Functional Materials
Applied Photon Science
Bioenergy
Clean Combustion

Colloid, Polymer and Crystal Engineering
Digital Manufacturing and Emerging Technologies
Industrial Biotechnology and Biowaste
Innovative Manufacturing and Products
Materials Characterisation
Modelling and Data Analytics
Molecules to Product
Multiscale Process Engineering
Nuclear Engineering
Process Tomography
Sustainable Low Carbon Future
Sustainable Systems and Processes

Chemistry

eps.leeds.ac.uk/chemistry

Atmospheric and Planetary Chemistry
Chemical Biology and Medicinal Chemistry
Colour and Polymer Science
Computational Chemistry and Chemical Physics
Crystallisation and Directed Assembly
Printed Electronics
Process Research and Development
Surface Coatings

Civil Engineering

eps.leeds.ac.uk/civil-engineering

Architectural Engineering and Building Physics
Cement and Concrete Science
Energy Management and Infrastructure
Engineering Project Management
Flow Modelling and Flood Risk Management
Geotechnics, Geo-energy and Geo-environmental Engineering
Health and the Built Environment
Infrastructure Materials
Non-destructive Testing and Structural Health Monitoring
Public Health and Environmental Engineering
Resource Recovery
Smart Structures and Robotics
Structural Composites and Performance of Structures
Sustainable and Resilient Infrastructure
Sustainable Global Development
Water and Wastewater Treatment
Water, Sanitation and Health

Computing

eps.leeds.ac.uk/computing

Algorithms, particularly over graphs
 Artificial Intelligence in Medical Diagnosis and Care
 Computational Modelling of Biological and Organ Systems, including computational neuroscience and computational cardiology
 Computer Vision, particularly multi-modal activity analysis and medical image computing
 Data Analytics, particularly biomedical and health-related
 Distributed Systems and Cloud Computing
 Graphics and Animation
 Knowledge Representation and Reasoning
 Logic and Proof Complexity
 Machine Learning
 Natural Language Processing and Text Mining
 Ontologies
 Parallel and Functional Programming
 Robotics, particularly manipulation, planning and biologically inspired control
 Scheduling
 Scientific Computing and Numerical Methods
 Scientific and Information Visualisation
 Spatial Representation and Reasoning
 User-aware Intelligent Systems

Dentistry

medicinehealth.leeds.ac.uk/dentistry-research-innovation

Biomaterials and Tissue Engineering
 Biomineralisation
 Dental Educational Research
 Dental Public Health and Health Services Research
 Microbiology and Cell Biology
 Translational and Clinical Research

Design

ahc.leeds.ac.uk/design-research-degrees

Archiving and Design History
 Art Practice as Research
 Colour and Imaging
 Experience Design
 Sustainable Design
 Textile and Fashion Design
 Textile Technology
 Visual Communication

You can also study a PhD by distance learning in this discipline.

Earth and Environment

environment.leeds.ac.uk/see

Applied Geoscience
 Climate and Atmospheric Science
 Earth Surface Science
 Geophysics and Tectonics
 Sustainability

Economics

business.leeds.ac.uk/phd

Development and Wellbeing
 Environment, Infrastructure, Innovation and the Circular Economy
 Financialisation and Globalisation
 The Macro Economy and Macroeconomic Policy
 Work, Labour and Organisation

Education

education.leeds.ac.uk/research

Childhood and Youth Studies
 Curriculum and Pedagogy Innovation
 Digital Education
 Disability and Inclusion
 Education and Social Justice
 Educational Policy Development and Enactment
 Language Learning and Education
 Teacher Development

Electronic and Electrical Engineering

eps.leeds.ac.uk/electronic-engineering

Autonomous Systems, Sensor Networks and Internet-of-Things
 Bio-nanoelectronics
 Communication Networks and Systems
 Electric Power Systems and Applications
 Medical Robotics
 Microwave and Millimetre-wave Engineering
 Quantum Electronics and Quantum Communications
 Signal Processing for Communications
 Terahertz Electronics and Photonics
 Ultrasonics and Instrumentation
 Wearable Electronics

English

ahc.leeds.ac.uk/english-research-degrees

American Literature and Culture
 Critical and Cultural Theory
 Drama and Theatre Studies
 Eighteenth-century and Romantic Literature
 English Language (Corpus, Forensic and Ethnographic Linguistics, and Stylistics)
 Medieval and Early Modern
 Modern and Contemporary (British and Irish)
 New Humanities (Medical, Environmental, Digital, Digital Editing)
 Postcolonial Literature and Culture
 Practice-led Research (including Creative Writing and Performance)
 Victorian Literature

You can also study a PhD by distance learning in this discipline.

Fine Art, History of Art, Cultural Studies, Museum and Heritage Studies

ahc.leeds.ac.uk/fine-art-research-degrees

Art Markets (past and present)
 Artists' Books and Publications; Creative Writing and Critical Studies
 Continental Cultural Theory/Critical Humanities
 Country House/Heritage, Museums and Galleries
 Critiques of Capitalism (Aesthetics-Politics)
 Cultural Politics
 Curatorial Studies; Exhibition and Biennale Studies
 Feminist Theory and Gender Studies
 Fine Art Practice
 Global Perspectives of Art/History
 Jewish Visualities and Representations
 Medieval, Renaissance and Early Modern Art Worlds
 Social Histories of Art
 Sound Studies (voice, music and noise)
 Transnational, Translational and Postcolonial theories, Art Practices and Histories

You can also study a PhD by distance learning in this discipline.

Fluid Dynamics

fluids.leeds.ac.uk

Biological and Physiological Flows
 Environmental Flows
 Geophysical Flows
 Imaging in Flow Modelling and Evaluation
 Microflows and Heat Transfer
 Particulate Flows, Sediments and Rheology
 Reacting Flows, Mixing and Safety

Food Science and Nutrition

environment.leeds.ac.uk/food-nutrition

Digestion and Delivery
 Food Colloids and Soft Matter at Interfaces
 Food Safety, Food Security and Global Health
 Functional Biopolymers for Food and Health
 Human Nutrition and Lifestyle Interventions
 Modelling of Food Systems Across Multiple Scales
 Novel Food Design and Processing
 Nutritional Epidemiology
 Obesity, Cancer and Metabolic Disease

Geography

environment.leeds.ac.uk/geography

Ecology and Global Change

Biogeochemical Cycles
Ecosystems and Evolution
Global Environmental Science
Palaeoecology, Palaeoclimate and Chronostratigraphy

River Basin Processes and Management

Aquatic Ecosystems
Biogeochemistry
Geomorphology
Glaciology
Hydrology and Hydraulics

Social Justice, Cities and Citizenship

Consumption, Public Space and the Arts
Identity, Difference and Citizenship
Migration, Precarity and Forced Labour
Social Movements and Scholar Activism
Urban Contestation and Alternatives
Urban Sustainability

Spatial Analysis and Policy

Agent-based Modelling
Geodemographics
Geographic Information Systems (GIS)
Quantative Geography
Urban Analytics

Healthcare

www.leeds.ac.uk/soh/research

Long-term Conditions
Maternal, Child and Family Health
Medicines Optimisation
Mental Health
People, Systems and Services

History

ahc.leeds.ac.uk/history-research-degrees

Cities
Colonial and Postcolonial Studies
Enterprise and Cultures of Consumption
Health, Medicine and Society
Modern History: Britain, Europe and International
War and Peace
Women, Gender and Society

You can also study a PhD by distance learning in this discipline.

International Business

business.leeds.ac.uk/phd

Conflict and Litigation in International Business
Corporate Governance in the International Firm
Cross-Cultural Management and Language
FDI in and from Emerging Economies such as China and India
Global Innovation
International Strategy and Firm Competitiveness
Theory of the Multinational Enterprise

Languages, Cultures and Societies

ahc.leeds.ac.uk/languages-research-degrees

Arabic, Islamic and Middle Eastern Studies
Classics
East Asian Studies
French
German
Italian
Linguistics and Phonetics
Russian and Slavonic Studies
Spanish, Portuguese and Latin American Studies
Translation Studies
World Cinemas and Digital Culture

You can also study a PhD by distance learning in this discipline.

Law

law.leeds.ac.uk/research

Business Law and Practice
Criminology and Criminal Justice
Innovation and Research in Legal Education
Law and Social Justice

Management

business.leeds.ac.uk/phd

Decision Research
Entrepreneurship
Logistics, Information Management, Operations and Networks
Organisational Behaviour, Learning, Change and Socio-technical Systems
Strategy, Technology, Innovation and Leadership

Marketing

business.leeds.ac.uk/phd

Consumers Behaviour and Branding
Global Marketing and Export Strategy
Strategic Marketing

Materials

www.leeds.ac.uk/bragg

Analytical Science
Bionanotechnology
Electronic and Photonic Materials
Functional Surfaces
Multiscale Materials
Soft Matter

Mathematics

eps.leeds.ac.uk/maths

Algebra, Geometry and Integrable Systems
Analysis
Astrophysical and Geophysical Fluids
Complex Materials and Industrial Mathematics
Data Science
Financial Mathematics
Mathematical Biology and Medicine
Mathematical Logic
Nonlinear Dynamics and Complex Systems
Probability and Stochastic Modelling
Statistics

Mechanical Engineering

eps.leeds.ac.uk/mechanical-engineering

Advanced Manufacturing
Biomechanics and Robotics
Computer-enabled Design Optimisation
Corrosion and Erosion-Corrosion
Design Sciences
Energy Efficient Aerospace and Automotive Design
Engineering Fluids and Micro/Nano-fluidics
Healthcare Technologies
Scale Formation in Oil and Gas Production
Thermofluids and Combustion
Tribology and Surface Engineering
Tribology and Tribochemistry

Media and Communication

ahc.leeds.ac.uk/media-research-degrees

Digital Cultures
Global Communication
Journalism
Media Industries and Cultural Production
Political Communication
Visual Media and Communication

Medical and Biological Engineering

www.imbe.leeds.ac.uk

Advanced Simulation Systems for Preclinical Testing
Biological Scaffolds for Tissue Regeneration
Longer Lasting Joint Replacements

Medicine

[medicinehealth.leeds.ac.uk/medicine-research-innovation](https://www.leeds.ac.uk/medicine-research-innovation)

Cancer
Cardiovascular
Complex Interventions
Diagnostics and Pathology
Educating Doctors to Provide Safer Care
Frailty and Elderly Care
Genetics and Genomics
Health Economics
Immunity and Inflammation
Infection and Antimicrobial Resistance
International Health Research
Mental Health
Musculoskeletal Disease
Palliative Care
Populations
Primary Care
Regenerative Medicine
Surgical Technology
Targets and Therapies

Medieval Studies

[ahc.leeds.ac.uk/medieval-research-degrees](https://www.leeds.ac.uk/medieval-research-degrees)

Faith, Religion and the Church in the Middle Ages
Gender, Culture and Society
Health, Medicine and Animal Studies
Material Cultures
Medieval Languages
Medieval Latin and Vernacular Literatures
Medievalism
Warfare, Frontiers and Transcultural Encounters

Music

[ahc.leeds.ac.uk/music-research-degrees](https://www.leeds.ac.uk/music-research-degrees)

Making Music

Composition (acoustic, electro-acoustic)
Improvisation
Performance Research (including historically informed performance, editing)

Music and Science

Music and Wellbeing (health, environment, society)
Music Technology (history, development, computing, multimedia, instruments)

Psychology of Music (development, identities, listening behaviour, perception, performance, creativity)

Technologies and Practices of Film Music

Music as Culture

Critical, Historical and Applied Musicology
Film Musicology
Music and Cultural Difference
Music and Literature

You can also study a PhD by distance learning in this discipline.

Performance and Cultural Industries

[ahc.leeds.ac.uk/performance-research-degrees](https://www.leeds.ac.uk/performance-research-degrees)

Applied Performance and Social Engagement
Arts Marketing, Management and Leadership
Contemporary Opera and Music Theatre
Creative Entrepreneurship
Cultural and Creative Industries
Cultural Policy and Development
Digital Technologies and Performance
Dramaturgy and Creative Writing
Engagement and Participation in Theatre and the Arts
Interactive, Immersive and Participatory Performance
Performance and Popular Culture
Performance Making and Composition
Performer Training
Phenomenology and Embodied Spectatorship
Scenography, Costume and Lighting Design

You can also study a PhD by distance learning in this discipline.

Philosophy, Religion and History of Science

[ahc.leeds.ac.uk/philosophy-research-degrees](https://www.leeds.ac.uk/philosophy-research-degrees)

[ahc.leeds.ac.uk/ethics-research-degrees](https://www.leeds.ac.uk/ethics-research-degrees)

Aesthetics and Philosophy of Art
Ancient Philosophy
Applied Ethics
Epistemology
Ethics and Metaethics
History of Science, Technology and Medicine
Metaphysics
Philosophical Logic
Philosophy of Language
Philosophy of Mind and Action

Philosophy of Physics
Philosophy of Religion
Philosophy of Science
Political Philosophy
Religion and Cultural Heritage
Religion and Gender
Religion and Global Development
Religion and Public Life
Religion and Social Sciences
Theological Ethics

You can also study a PhD by distance learning in this discipline.

Physics and Astronomy

[eps.leeds.ac.uk/physics](https://www.leeds.ac.uk/physics)

Astrophysics
Condensed Matter
Molecular and Nanoscale Physics
Physics Education
Soft Matter Physics
Theoretical Physics

Politics and International Studies

[polis.leeds.ac.uk/research](https://www.leeds.ac.uk/research)

Data Analytics
Democratic Engagement
Global Development
Global Governance
International Relations
Political Parties and Institutions
Political Theory
Responsibility to Protect
Security Studies

Psychology

[medicinehealth.leeds.ac.uk/psychology-research-innovation](https://www.leeds.ac.uk/psychology-research-innovation)

Behaviour Change
Health and Wellbeing
Successful Ageing
Successful Childhood Development
The Nervous System and its Disorders

Robotics

[robotics.leeds.ac.uk/research](https://www.leeds.ac.uk/research)

Artificial Intelligence for Robotics
Assistive and Rehabilitation Robotics
Bio-Robotic Control
Enabling Technologies for Robotics
Exploration Robotics
Infrastructure Robotics
Robot Manufacturing
Robotic Manipulation
Robotic Perception, Learning and Reasoning
Service Robotics
Soft Robotics
Surgical Robotics

Sociology and Social Policy

[sociology.leeds.ac.uk/research](https://www.leeds.ac.uk/research)

Disability Studies
Ethnicity and Racism Studies
Families, Life Course and Generations
Health, Technologies and Social Practice
Interdisciplinary Gender Studies
Social, Economic, Environmental and Political Life

Transport

[environment.leeds.ac.uk/transport](https://www.leeds.ac.uk/transport)

Automation in Transport
Choice Modelling
Digital Futures
Economics and Appraisal
Energy in Transport
Human Factors and Safety
Rail
Social and Political Sciences
Spatial Modelling and Dynamics
Transport in the Global South

Work and Employment Relations

[business.leeds.ac.uk/phd](https://www.leeds.ac.uk/phd)

Between Professions and Precarity: the New World of Work
Changing Structures of Governance and Organisation
Employment, Skills and Occupations
Labour Mobility, Migration and Citizenship
Markets, Flexibilisation and Social Protection
Voice, Representation and Social Movements



LEEDS IN THE UNITED KINGDOM

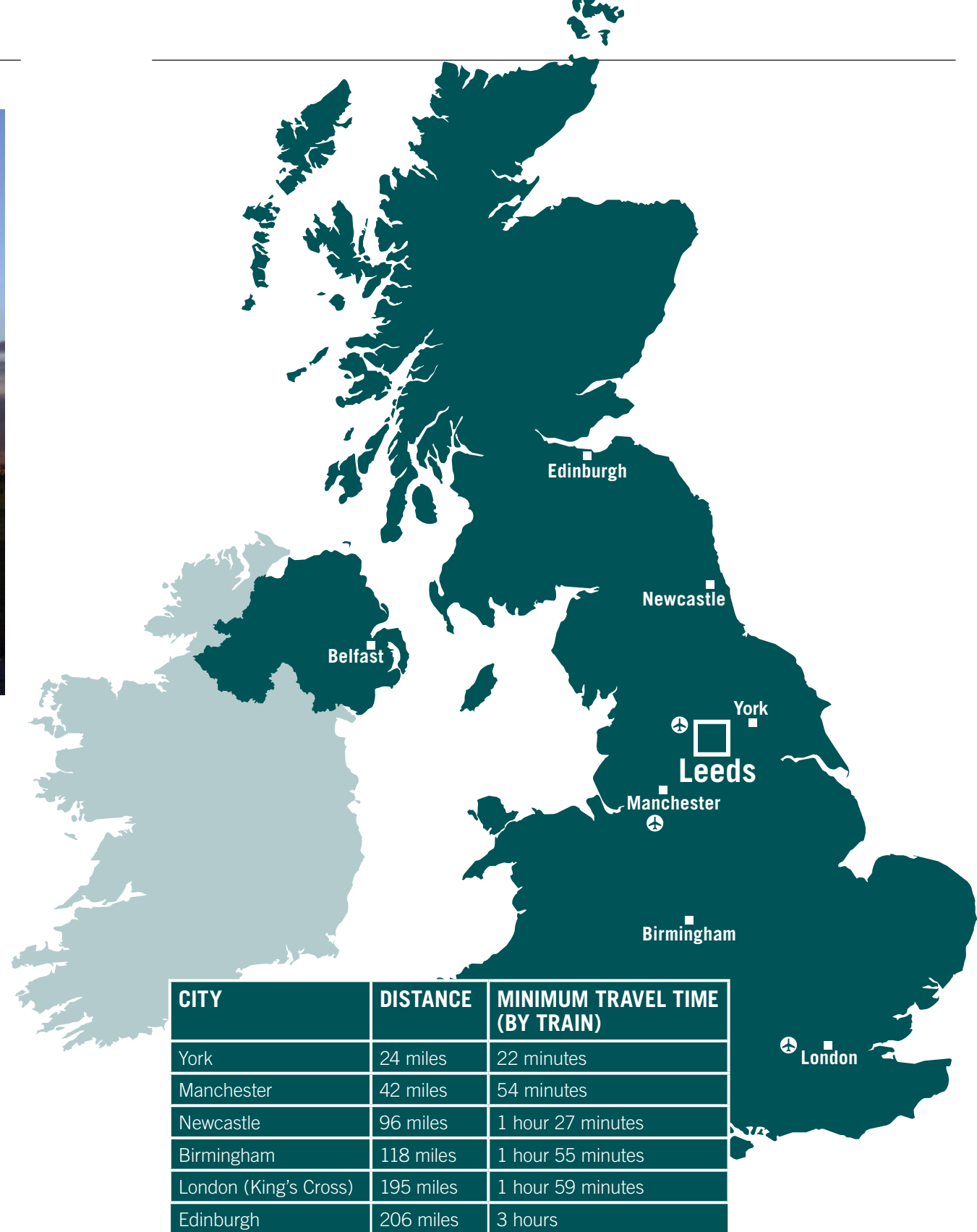
A vibrant city surrounded by countryside, Leeds is at the heart of the UK. In addition to excellent bus and train services, Leeds Bradford Airport is just 30 minutes away. Full details of how to get here by train, bus, car and air are available on our website.

www.leeds.ac.uk/howtofindus

THE CAMPUS AND THE CITY

Our campus is a short, 10-minute walk from the city centre and all its attractions and amenities, including theatres, bars, restaurants, and bus and train stations.

www.leeds.ac.uk/citylife



Alternative formats

If you require any of the information in this prospectus in an alternative format, such as Braille, large print or audio, email disability@leeds.ac.uk

This brochure was printed in September 2019 and some of the information in it may have changed. For more information about postgraduate research, visit www.leeds.ac.uk/pgr

Produced by Communications, University of Leeds.
Printed by Resource Print Solutions.

STUDENT CASE STUDIES

Photography by Andy Lord

PHOTO CREDITS

Page 12: **Dr A. E. Hogg,**
CPOM, University of Leeds

Page 12: **Keo Theasrun,**
Documentation Center of Cambodia

Page 12: **Dr Katie McQuaid**



UNIVERSITY OF LEEDS

Admissions Enquiries
University of Leeds
Leeds LS2 9JT
UK
+44 (0)113 343 2336
study@leeds.ac.uk
www.leeds.ac.uk/pgr