

POSTGRADUATE  
GUIDE

20  
23



UNIVERSITY OF LEEDS



# Our campus by the city.

## **Parkinson Building**

The iconic landmark building of the University

## **North-east quarter**

Brings together engineering, computing and physical sciences

## **St George's Field**

A beautiful green space in the heart of campus

## **The Edge**

Swimming pool, gym and sports halls

## **Edward Boyle Library**

Includes a postgraduate-only research hub

## **Leeds University Union**

Shops, cafés, music venues and home to our clubs and societies

## **Western campus**

Home to our Business School and School of Law



Learn about life at Leeds at our virtual and in-person events [www.leeds.ac.uk/pgopenday](http://www.leeds.ac.uk/pgopenday)

# Contents

## **Research at Leeds**

Research excellence	12
Making an impact	16
Research facilities	17

## **Your study experience**

Academic facilities	18
Masters learning and teaching	20

## **Your career**

Your career after your Masters	22
Your career after your research degree	26
Career planning	28

## **Life in Leeds**

Leeds and Yorkshire	30
Living in Leeds	34

## **Campus life**

Our campus	36
Leeds University Union	38
Sport and fitness	40

## **Your wellbeing**

Wellbeing and support	42
-----------------------	----

## **Fees and funding**

Fees and costs	44
Funding your Masters	46
Funding your research degree	48

## **Study options**

Your Masters study	52
Your research degree	62

## **Applying**

Applying for your Masters	64
Applying for your research degree	65
International student applications	66

### **IMPORTANT INFORMATION**

Information provided by the University, such as in presentations, University brochures and on the University website, is accurate at the time of first disclosure. However, courses, University services and content of publications remain subject to change. Changes may be necessary to comply with the requirements of accrediting bodies or to keep courses contemporary through updating practices or areas of study. Circumstances may arise outside the reasonable control of the University leading to required changes. Such circumstances include industrial action, unexpected student numbers, significant staff illness (where a course is reliant upon a person's expertise), unexpected lack of funding, severe weather, fire, civil disorder, political unrest, government restrictions and serious concern with regard to the transmission of serious illness making a course unsafe to deliver. After a student has taken up a place with the University, the University will look to give early notification of any changes and try to minimise their impact, offering suitable alternative arrangements or forms of compensation where it believes there is a fair case to do so. The latest key information on courses, entry requirements and fees can be found at [courses.leeds.ac.uk](http://courses.leeds.ac.uk) and [www.leeds.ac.uk/pgpr](http://www.leeds.ac.uk/pgpr). Please check these websites before making any decisions.

---

# Study with us.

A leading research university in one of the UK's most diverse and vibrant cities.

## Top 100 university in the world

QS World University Rankings 2023

---

## Member of the Russell Group of research-intensive universities

---

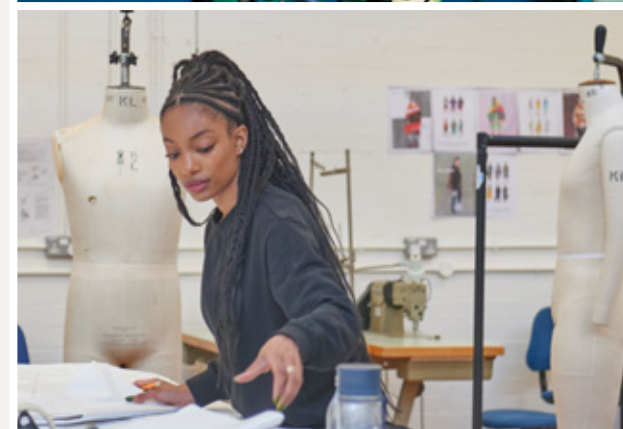
## 5th most targeted UK university by graduate recruiters

The Graduate Market in 2022, High Fliers Research

---

## 37th most international university in the world

Times Higher Education 2022





**A focus  
on your  
employability**



**A collaborative  
research culture**



**Innovative  
and interactive  
teaching**



**Outstanding  
facilities with  
continual  
investment**



**A global  
community  
of staff and  
students from  
more than  
150 countries**

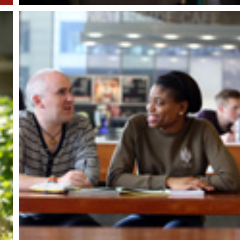
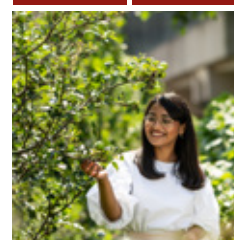
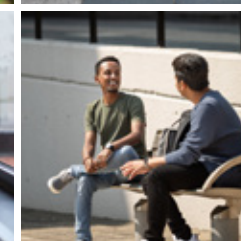
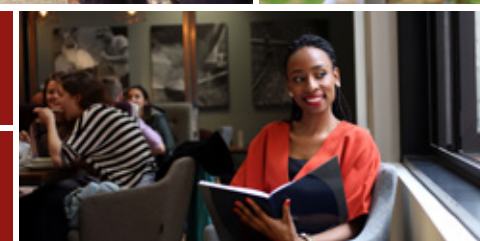


# Connect with us.

Find out why Leeds is the choice for postgraduate study.

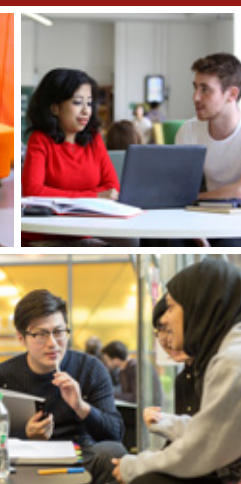
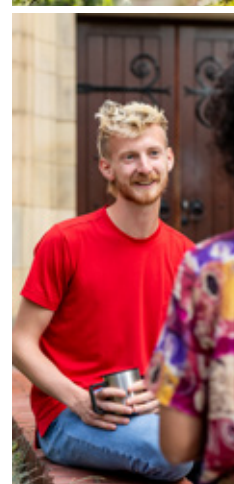
Subscribe to our Masters newsletter

[www.leeds.ac.uk/pgnewsletter](http://www.leeds.ac.uk/pgnewsletter)



Chat to our postgraduate researchers and students

[www.leeds.ac.uk/linktoleeds](http://www.leeds.ac.uk/linktoleeds)



# Research excellence

Our research is helping to build a better future. Join us and make an impact.

[www.leeds.ac.uk/research](http://www.leeds.ac.uk/research)



## Your Leeds Masters

Research is at the heart of your learning at Leeds. Our academics' globally recognised research feeds directly into your course, so you benefit from the latest knowledge and thinking.

We'll encourage you to develop a research mindset – investigating, questioning and discovering. You'll gain advanced research skills to apply in your final project and further study.

## Your Leeds research degree

You'll join our large and thriving research community, connected by the Doctoral College and faculty graduate schools. Your academic supervisors, experts in your subject, will guide your research and your personal development.

Both the scale and quality of our research give you the opportunity to be part of internationally significant work.

## Interdisciplinary solutions

Collaboration underpins our pioneering research.

We bring together researchers from different disciplines and backgrounds to create an environment in which world-leading research can flourish. Our interdisciplinary environment gives you opportunities to collaborate with others in your discipline and across disciplines, whatever your specialism.

The University of Leeds is home to high-profile interdisciplinary centres like the Bragg Centre for Materials Research and the Priestley International Centre for Climate, which push the boundaries of knowledge.

We have several Centres for Doctoral Training (CDTs), which aim to train tomorrow's leading researchers to address science-related problems for the benefit of society.

We attract prestigious research funding and have invested heavily in our people and facilities, and in partnering with the very best research institutes.

Find out more about our interdisciplinary approach at

[www.leeds.ac.uk/research-environment](http://www.leeds.ac.uk/research-environment)

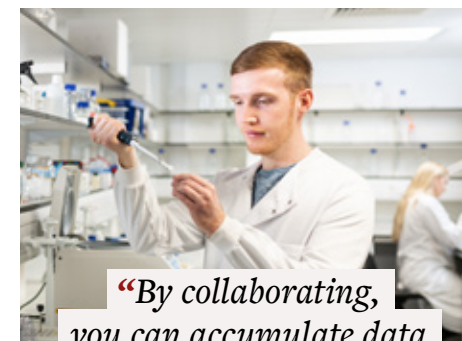
## Prestigious partnerships

Our local, national and global partnerships can help advance your research, offering access to leading facilities, specialist expertise and data.

The University's Commercialisation team supports our researchers in transforming their academic research into commercial success.

Find out more about the University partnerships that could benefit your research at

[www.leeds.ac.uk/research-partnerships](http://www.leeds.ac.uk/research-partnerships)



*“By collaborating, you can accumulate data a lot more quickly. I was lucky to publish early in my PhD. This, and the equipment and experience we had at Leeds, led me to work with researchers across Europe.”*

**Daniel Hurdiss**

**Former postgraduate researcher**

# A route to success.

Nana wants to contribute to the future of transportation. Her Masters project has allowed her to make an impact.

“

*My research is so relevant – it's about how COVID-19 affected travel patterns and public transport. I analysed data from 10 cities. There was an amazing shift to walking and cycling, but also fewer people using public transport. My recommendations are about maintaining sustainability and getting passengers back. It's likely they'll be used by Transport for the North and Transport Scotland. I want to contribute to the future of transportation.*

**Nana Abena Ametepe**  
MSc Transport Planning

Pictured outside the  
Nexus Building on campus

Read more about Nana's research at [www.leeds.ac.uk/nana-ametepe](http://www.leeds.ac.uk/nana-ametepe)



# Making an impact

Researchers at Leeds are addressing some of the world's biggest challenges. Our discoveries are making a real difference to society. Here is just some of our research that's making an impact.



## **Empowering conflict survivors**

Our researchers are supporting young conflict survivors across the world through a project which helps them use creative media to understand and share their experiences.



## **Protecting populations from health crises**

The World Health Organization has partnered with the University to develop a global strategy that helps to prevent, detect and respond to threats exposed by the COVID-19 pandemic.



## **Life-saving weather forecasting**

University scientists involved in the GCRF African SWIFT project are helping to protect lives and infrastructure from the threat of extreme weather with hour-by-hour forecasts of developing storms.



## **Finding a safer way to make the polio vaccine**

We're developing an alternative to traditional polio vaccines by engineering virus-like particles that are easier, cheaper and safer to manufacture.

# Research facilities

Our leading facilities shape your research and enhance your learning.

## **Professional facilities**

Impressive facilities across our schools and faculties allow you to build your specialist and professional skills and offer an excellent platform for your research. They include:

- specialist **laboratories and clinical facilities**
- high-end **studios, workshops, theatres and performance spaces**
- the **University Library's Special Collections** – home to thousands of rare books, manuscripts, archives and artworks for primary research
- the **M&S Company Archive** on campus, which allows research into subjects ranging from business, history and geography to marketing and fashion design
- other specialist facilities such as translation labs, galleries, trading rooms, a moot court and an observation lab

**Over 90%**  
of our research  
submitted was rated  
**'world leading' or  
'internationally  
excellent'**

REF 2021

## **Cutting-edge equipment**

The University is home to some of the UK's leading research centres, where cutting-edge equipment facilitates discovery and progress. You might use these facilities yourself, or benefit from the data and insights they provide.

### **Our research centres include:**

- **The Astbury Centre for Structural Molecular Biology** – with some of the world's most powerful cryo-electron microscopes
- **The Bragg Centre for Materials Research** – with advanced facilities for growth, fabrication, analysis and characterisation of materials
- **The University of Leeds Research Farm** – with a £3 million suite of instrumentation and research tools at a commercial working livestock and arable farm, which includes the National Pig Centre, part of the Centre of Innovation Excellence in Livestock (CIEL)

Explore the specialist facilities in your faculty at [www.leeds.ac.uk/faculties](http://www.leeds.ac.uk/faculties)

# Academic facilities

Everything you need to enhance your studies – from one of the largest libraries in the UK to extensive IT resources and skills support.

[www.leeds.ac.uk/masters-academic-facilities](http://www.leeds.ac.uk/masters-academic-facilities)

[www.leeds.ac.uk/research-academic-facilities](http://www.leeds.ac.uk/research-academic-facilities)



## Libraries

The University has one of the UK's major academic research libraries, offering:

- four libraries on campus, each offering a different working environment to suit how you want to work
- millions of printed and online resources
- spaces for group and silent individual study
- wi-fi and technology-enabled throughout
- expert library staff on hand to help

[library.leeds.ac.uk](http://library.leeds.ac.uk)

## Postgraduate research hub

The postgraduate-only research hub in the Edward Boyle Library offers:

- bookable individual and group study rooms, with large LED screens
- lockers for your convenience
- extra-large study desks with wi-fi, individual lighting and power sockets

## Skills for Masters study

Develop the academic skills you need through workshops, webinars and individual advice. Our learning advisors can help you with dissertation writing, presentation, time management and more.

[library.leeds.ac.uk/skills](http://library.leeds.ac.uk/skills)

## Support for researchers

Get support from our expert research advisors on literature searching, referencing, EndNote, open access publishing, increasing citations and research data management.

[library.leeds.ac.uk/researcher](http://library.leeds.ac.uk/researcher)

## Computers and IT support

You'll have access to the latest technologies to support your studies. Collaboration tools, like Microsoft Teams, Zoom and China Connect, allow you to connect from anywhere. You'll find:

- high-speed wi-fi across campus and 24-hour computer clusters
- a wide range of standard, specialist and professional software
- the Microsoft Office 365 suite, linked to your University account and available anywhere
- free access to licensed copies of Office 365 ProPlus to use at home or on the move
- personalised content (including your timetable and library record) on your phone through the UniLeeds app
- IT-supported teaching spaces so you can learn interactively
- lots of help and support from our IT Service Desk

[it.leeds.ac.uk](http://it.leeds.ac.uk)

## Language Centre

Learn a new language alongside your studies, with resources in more than 50 languages, in our Language Zone. You can access study spaces and learning materials, or practise your conversation through our language exchange – all for free.

If English isn't your first language, improve your academic English before you start your studies with a course at the University Language Centre.

[www.leeds.ac.uk/languagecentre](http://www.leeds.ac.uk/languagecentre)

# Masters learning and teaching

We'll encourage you to challenge and question, and to become a specialist.

[www.leeds.ac.uk/masters-learning](http://www.leeds.ac.uk/masters-learning)



## Research-based learning

You'll study among inspirational academics, world experts who share your passion for your subject area. Your tutors will share their research, so your learning is shaped by current ideas and expertise.

## Digital learning

Digital learning is embedded in your study experience at Leeds and includes:

- the latest digital learning technology in some teaching spaces, so you can collaborate with others and interact with your lecturers
- access to video and audio recordings of most of your lectures and other learning activities through our Virtual Learning Environment
- 100% online courses and distance learning (with some face-to-face meetings) for some Masters courses



## Academic support

As part of your high-quality learning experience, you'll find lots of support to help you step up to Masters study through:

- academic study skills advice and workshops (see page 19)
- your personal tutor, who can help you review your academic progress and support your personal and professional development

# Your career after your Masters

Build your professional and transferable skills. Make the most of opportunities and networks to enhance your career.

[www.leeds.ac.uk/masters-career](http://www.leeds.ac.uk/masters-career)



## Industry-focused degrees

Our Masters courses are industry-relevant, offering:

- well-established links with leading organisations
- talks by industry experts
- tutors who are industry practitioners sharing their experience
- professional accreditation and industrial advisory boards, which ensure courses meet employer needs

## Real-world experience

You can gain hands-on experience, develop professional skills and make connections to boost your employability through:

- work placements and live projects for industry as part of some courses
- short-term projects or fieldwork in the UK or overseas
- part-time and summer work placements and internships outside your course

## Transferable skills

We'll help you build transferable skills prized by employers, with opportunities to present your ideas, lead teams and manage projects. These vital skills can help you secure and progress in the career you want.

You can develop transferable skills through your course and through informal routes such as:

- volunteering, to enhance your CV and broaden your experience
- enterprise – if you have a business idea, Spark, our business start-up service, can provide mentor support and guidance
- leadership roles across our clubs and societies

## Personal and professional development

You'll have access to thousands of LinkedIn Learning online courses across a huge range of topics. Use these to enhance your personal and professional development, and your career prospects.

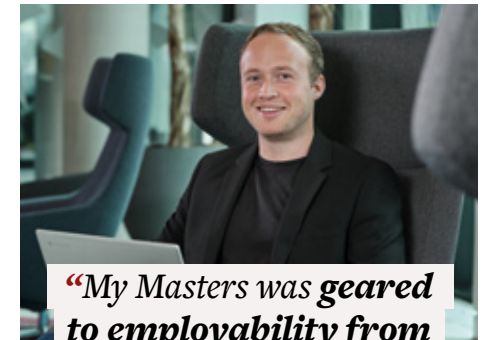
Free workshops and advice from our Skills@Library team can help you polish your skills in presentation, time management and more, enhancing your professional as well as your academic abilities (see page 19).

Our LeedsforLife commitment is designed to empower you to make the most of your time at Leeds and prepare for your future. It helps you explore student opportunities, curriculum options and support services, and succeed in a way that works for you.

[leedsforlife.leeds.ac.uk](http://leedsforlife.leeds.ac.uk)

**5th**  
**most targeted**  
**university**  
**by graduate**  
**recruiters**

The Graduate Market in 2022  
High Fliers Research



***“My Masters was geared to employability from the start – from the course content to the international connections. I got a place on Samsung’s highly competitive Emerging Talent graduate scheme. I progressed from this to be a marketing manager.”***

**Jack Castledine**

**MSc International Marketing Management**

# Peak performance.

Placements with GB Basketball, Birmingham Royal Ballet and the NHS helped Sarah get ahead in her physiotherapy career.

“

*Studying my Masters was about my professional development and progressing in my career as a physiotherapist. Work placements were a highlight. I built my links within the industry, as well as my expertise. Since then, I've continued to work with GB Basketball under-20s women's team and I now work at the Rugby Football Union (RFU), the sport's governing body in England.*

**Sarah Hattee**  
Physiotherapist with  
the Rugby Football Union

MSc Sport and Exercise  
Medicine (part time)

Pictured at the Edge, the University's  
indoor sports facility

Read more about Sarah's Masters study at [www.leeds.ac.uk/sarah-hattee](http://www.leeds.ac.uk/sarah-hattee)

# Your career after your research degree

Gain the skills and expertise to succeed, whether you're aiming for a higher-level role in industry or the public sector, or an academic career.

[www.leeds.ac.uk/research-career](http://www.leeds.ac.uk/research-career)



## Industry connections

Our research degrees offer industry links through:

- defined PhD projects, some of which offer funded studentships
- established connections with industry across all sectors, including arts, business, health and engineering
- specialist industry speakers
- events coordinated by Leeds Doctoral College
- our Commercialisation team, which identifies, evaluates and develops commercial opportunities for research at the University

## Transferable skills

A research degree shows expertise at the highest level, and demonstrates advanced research and analytical skills.

As a postgraduate researcher, you'll gain transferable skills that will be invaluable, whatever your chosen career, including analysing and communicating complex information, and working independently and as part of a team.

## Building your research profile

Building your profile is a key part of success as a postgraduate researcher. You'll have opportunities to present your research findings, and network with academic colleagues and industry experts, at national and international conferences and research events.

There are also opportunities to publish your research and provoke academic debate.



***"I've had the chance to showcase my research at international conferences. I've also published in some open access journals with the help and support of the University and my supervisor."***

**Vicente Merida**

**PhD Food Science and Nutrition**

## Your development plan

Your supervisor will be key in helping you plan and shape your development. Together you'll agree a personal development plan that reflects your experience and aspirations.

Our online Graduate Record of Achievement and Development (GRAD) helps you plan and record your development activity, with milestones to track your progress right up to completion of your research degree.

The University runs and takes part in several researcher development programmes.

## Training opportunities

You'll have access to a huge range of training and development resources, so you can tailor your development to match your needs. Opportunities include:

- workshops and learning resources covering topics ranging from academic writing to using data analysis tools
- teaching practice through lectures and practical sessions
- teaching skills workshops on demonstrating, lecturing, small-group teaching and assessing student work
- thousands of free LinkedIn Learning courses covering a huge range of topics
- online courses from Leeds Doctoral College to help you at all stages of your research and with developing core skills such as project management

# Career planning

Advice, events and resources for postgraduates to help you secure the career you want.

[students.leeds.ac.uk/careers](https://students.leeds.ac.uk/careers)



## Careers advice and information

Whether you're a Masters student or researcher, our Careers Service offers a range of events and support, including advice for researchers about both academic and alternative career paths.

### They can help you:

- understand your strengths and market yourself effectively, with advice on CV writing, job applications and interview skills
- network with employers and get industry advice through our careers events, presentations and workshops. More than 500 national and international employers target our students each year at our careers events, including Amazon, Bank of England, Deutsche Bank, IBM, Intel, NHS, P&G and UNESCO
- find internships, placements and graduate jobs through our Careers Service website

## Employability through your faculty

We also offer discipline-specific advice and employability events through your school, faculty or graduate school.

Check out your school or faculty webpages to find out more.



## Connect with our alumni

You can access one of the biggest alumni communities of any UK university – a global network of more than 310,000 Leeds graduates in 197 countries.

Connect with alumni around the world and enhance your employability through the mentoring, talks, internships and scholarship opportunities they provide.

[alumni.leeds.ac.uk](https://alumni.leeds.ac.uk)

Be targeted by top graduate recruiters, including:



# Leeds and Yorkshire

A lively, multicultural city with career opportunities across many sectors. And beautiful countryside nearby.

[www.leeds.ac.uk/citylife](http://www.leeds.ac.uk/citylife)



Boutique shopping in Leeds Corn Exchange



Food stalls in Kirkgate Market



Kirkstall Abbey, ruins of an 800-year-old Cistercian monastery



Live at Leeds music festival



Leeds Central Library and Art Gallery





Northern Ballet, the leading dance company in the north of England



Victoria Leeds shopping centre



Kirkgate Market, one of Europe's biggest indoor markets



Woodhouse Moor parkrun



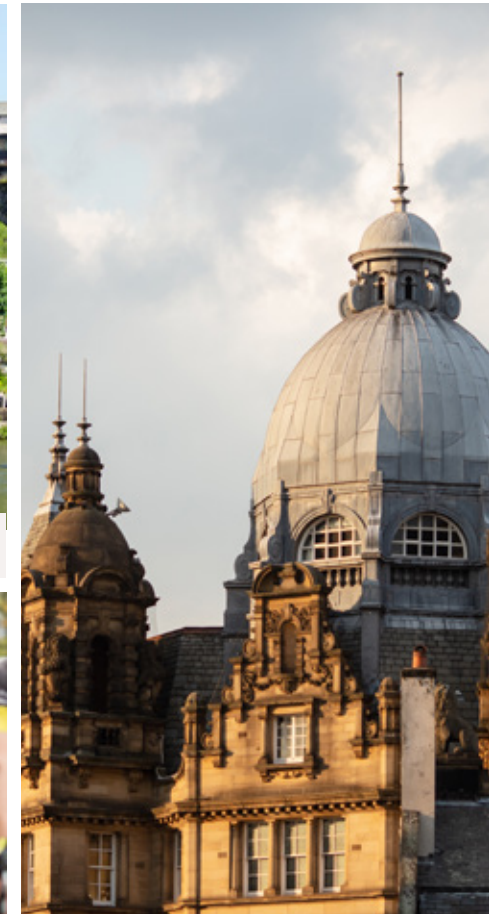
Scarborough, a seaside resort on Yorkshire's east coast



Taking a rowing boat out on the river is a great way to see Knaresborough



Tour de Yorkshire cycle race



Kirkgate Market rooftops

Explore all the great things to do in Leeds at [www.visitleeds.co.uk](http://www.visitleeds.co.uk)

# Living in Leeds

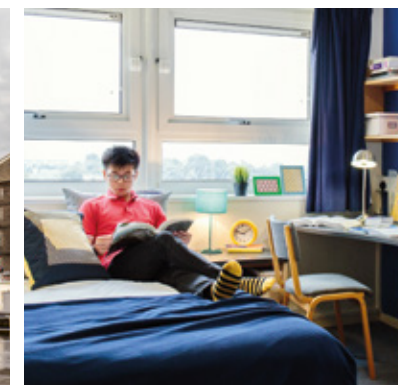
Leeds is a great place to live, with accommodation options to suit all lifestyles and budgets.



## Leeds city centre

One of the best places to live in England (North and Northeast)

The Times and Sunday Times 2022



### Private accommodation

Leeds has lots of good-quality private accommodation.

The city centre offers smart, modern apartments, perfect for city living. Headingley and Hyde Park are just a short walk or bus ride from campus and are popular with both students and academics. Several suburbs offer family homes, good schools and green spaces.

Get independent help and advice on all aspects of private accommodation from:

- Unipol, a student housing charity that works closely with the University
- the independent advice centre in the students' union

Unipol can also help you connect with potential flatmates.

[www.unipol.org.uk](http://www.unipol.org.uk)

[www.luu.org.uk/student-advice](http://www.luu.org.uk/student-advice)

### University accommodation

Our University-arranged postgraduate accommodation is close to campus and the city centre.

As a UK postgraduate, we cannot guarantee to offer you University accommodation, but we'll help if we can. We also have a small amount of family accommodation.

Find out more about University accommodation and our guarantee at [accommodation.leeds.ac.uk](http://accommodation.leeds.ac.uk)

**We guarantee\* you an offer of University-arranged accommodation if you are an international postgraduate (paying tuition fees at the international rate).**

\*Restrictions apply relating to deadlines, residence and academic fee status.

Chat to our students about living in Leeds at [www.leeds.ac.uk/linktoleeds](http://www.leeds.ac.uk/linktoleeds)

# Our campus

Everything in one place – sport, culture, things to get involved with and spaces to take a break. And all just a 10-minute walk from the city centre.

[virtualcampustour.leeds.ac.uk](http://virtualcampustour.leeds.ac.uk)



The Stanley & Audrey Burton Gallery



Common Ground, a space to relax in Leeds University Union



The gym at the Edge, our indoor sports facility



# Leeds University Union

Dedicated to making sure you love your time at Leeds.

[luu.org.uk](http://luu.org.uk)



## Your space

Leeds University Union (LUU) isn't just a great place to meet, work and relax; it offers independent advice, support and representation for all our students and researchers.

The Union building is at the heart of campus. It has a range of cafés, bars, food outlets and shops, and hosts events and live music.

## Opportunities to grow

Choose from over 300 clubs and societies, as well as lots of activities and networking events. There's also an online hub for postgraduates. Find part-time and flexible work, internships and projects through the LUU job shop, Joblink. Get involved in campaigns, volunteering and community projects.



*"I spend most of my free time in the societies. It's a **great way to relax and there's a real sense of community.** I've made lots of friends through the K-pop dance society and this has exposed me to different cultures."*

**Adeline Wong**

**MA Advertising and Design**

# Sport and fitness

Keep fit, unwind and socialise, with lots of sport and fitness options and fantastic facilities.

[sport.leeds.ac.uk/sport](http://sport.leeds.ac.uk/sport)



## Indoor facilities

**The Edge, our indoor sports facility on campus, has:**

- a 250-station gym with the latest Technogym equipment
- a 25m swimming pool, sauna and steam room
- sports halls and squash courts
- a climbing wall
- lots of exercise classes in term-time and virtual classes on demand

[sport.leeds.ac.uk/the-edge](http://sport.leeds.ac.uk/the-edge)

## Outdoor facilities

Nearby Sports Park Weetwood and Bodington Playing Fields offer sports pitches, a cycle circuit and the Brownlee Centre, the UK's first purpose-built triathlon training centre.

Enjoy hiking, caving, mountain biking and climbing at our outdoor centre in the Yorkshire Dales. There's also a boat house next to Thwaite Mills in Stourton with direct access to the canal for rowing.

## Social and competitive sport

We have more than 70 sports clubs, offering a chance to represent the University, individually or as part of a team.

Our social sport options include social leagues and Give it a Go sessions. The Get Out, Get Active programme lets you try fun, sociable activities on campus and in the beautiful Yorkshire countryside.

# Wellbeing and support

Whatever your situation, you'll have a network of support and wellbeing services dedicated to helping you.



## For Students website

Our For Students website provides help when you need it. You'll find information about money issues, health concerns, disability support and more.

[students.leeds.ac.uk](https://students.leeds.ac.uk)

## Help and advice

Leeds University Union offers impartial help and support with any problems you have as a student. The team specialises in housing, money and academic concerns, but can support you with anything. Their help is free and completely independent of the University.

[luu.org.uk/student-advice](https://luu.org.uk/student-advice)

## Medical care

Leeds Student Medical Practice is a large NHS doctors' practice, which cares for students and their immediate families. It's close to campus and offers all the usual general practitioner (GP) services and some specialist services.

[www.leedsstudentmedicalpractice.co.uk](https://www.leedsstudentmedicalpractice.co.uk)

## International students

There's lots of support to help you when you're new here and throughout your time at Leeds, including visa and immigration advice and activities specifically for international students.

[www.leeds.ac.uk/internationalstudents](https://www.leeds.ac.uk/internationalstudents)

## Childcare on campus

The Bright Beginnings Childcare Centre, on campus, offers places for children between the ages of three months and five years (preschool). There's also school holiday provision for children between three and 11 years old.

[www.brightbeginningschildcare.co.uk](https://www.brightbeginningschildcare.co.uk)

## Mental health and wellbeing

You can access free professional and confidential counselling, wellbeing and mental health support through groups, workshops, single-session consultations, short-term counselling and online self-help resources.

If you need longer-term support or treatment, we'll help you find the most appropriate NHS or voluntary sector services.

[students.leeds.ac.uk/supportandwellbeing](https://students.leeds.ac.uk/supportandwellbeing)

## Disabled student support

Our Disability Services team works with your academic school and other University services to ensure that your needs are met and any reasonable adjustments are put in place.

Don't wait until you start your course; contact us early to discuss your needs and arrange the right support before you get here.

[students.leeds.ac.uk/disabledstudents](https://students.leeds.ac.uk/disabledstudents)

## Faith and spiritual

There are spaces on campus for prayer and quiet contemplation, whether you practise a faith or not. Faith spaces on campus are places of welcome and friendship that can offer you support while you're here. Join in with regular events or talk in confidence to one of the chaplains, who come from a range of faith backgrounds.

[students.leeds.ac.uk/prayerandcontemplation](https://students.leeds.ac.uk/prayerandcontemplation)

# Fees and costs

There are two main costs to consider for postgraduate study: tuition fees and living costs.



## Tuition fees

### Masters students

The cost of your Masters degree will vary depending on your course. Find out more at [courses.leeds.ac.uk](https://www.leeds.ac.uk/courses)

Most part-time Masters fees are fixed at the point when you start your course and will not rise in subsequent years, so you can plan your finances.

If you study part time, the full-time fee is usually (but not always) split equally across each year of study. Check with the academic school running your course.

Find out more about fees, including information on how and when you'll need to pay, at [www.leeds.ac.uk/tuitionfeepaymentschedule](https://www.leeds.ac.uk/tuitionfeepaymentschedule)

### Postgraduate researchers

Find out more about the cost of your research degree and when you'll need to pay at [www.leeds.ac.uk/pgrfees](https://www.leeds.ac.uk/pgrfees)

Fees quoted are based on full-time study and apply for one year of the course. If you study part-time, the annual fee is normally 50% of the full-time rate. Check with your faculty graduate school.



## Living costs

Living costs include things like your accommodation, food, transport and social activities. Leeds is a relatively low-cost city compared to some areas of the UK, but you still need to budget carefully. Get advice on money, budgeting and the cost of living in Leeds at [students.leeds.ac.uk/budgetandcosts](https://students.leeds.ac.uk/budgetandcosts)

# Funding your Masters

Masters study is a big investment, but you might be able to get financial support from the government, the University or other funding bodies.

[www.leeds.ac.uk/mastersfunding](http://www.leeds.ac.uk/mastersfunding)



## Government funding for UK students

If you are a UK national, you may be eligible for a Postgraduate Master's Loan from the UK government to help with your tuition fees and living costs. This is a repayable loan, which is paid directly to you, but it isn't means-tested, so it doesn't depend on your personal or family income.

[www.leeds.ac.uk/postgraduateloans](http://www.leeds.ac.uk/postgraduateloans)

## Government funding for international students

If you're paying international fees, you may be able to apply for funding to study in the UK from your own government, independent sponsors or other award-paying bodies.

The UK government offers postgraduate scholarships for international students, such as the Chevening Awards and Commonwealth Scholarships.

[www.gov.uk/postgraduate-scholarships-international-students](http://www.gov.uk/postgraduate-scholarships-international-students)



## Funding from the University

If you have the talent, drive and potential to succeed, we want to help you to study with us, whatever your financial circumstances.

We offer a wide range of scholarships for UK and international students to help towards paying tuition fees or living costs. Check and apply for all possible sources of funding as soon as you have applied for your course.

[www.leeds.ac.uk/mastersfunding](http://www.leeds.ac.uk/mastersfunding)

If you are a former student of the University of Leeds, you may be eligible for a 10% alumni tuition fee bursary.

[www.leeds.ac.uk/alumnibursary](http://www.leeds.ac.uk/alumnibursary)



*"A Leeds Masters Scholarship allowed me to study an MA in Advertising and Design. I gained the knowledge and confidence to get into advertising and progress faster."*

**Liberty Maher**

Account Manager at a design and advertising agency

**MA Advertising and Design**



# Funding your research degree

Postgraduate research study is a major investment in your future but there's support available to help.

[www.leeds.ac.uk/researchdegreesfunding](http://www.leeds.ac.uk/researchdegreesfunding)



## Funding from the University

We want to attract postgraduate researchers with the talent, drive and potential to succeed, whatever their financial circumstances.

Find out about University scholarships and funding for UK and international research degree students from across our schools and subject areas.

[www.leeds.ac.uk/researchdegreesfunding](http://www.leeds.ac.uk/researchdegreesfunding)

If you are a former undergraduate or Masters student from the University of Leeds, you may be eligible for a 10% alumni tuition fee bursary.

[www.leeds.ac.uk/alumnibursary](http://www.leeds.ac.uk/alumnibursary)

## Funding from trusts, charities and foundations

Many trusts, charities and foundations award partial funding for postgraduate study. Useful sources include:

[www.findaphd.com](http://www.findaphd.com)

[www.postgraduatestudentships.co.uk](http://www.postgraduatestudentships.co.uk)

[www.prospects.ac.uk](http://www.prospects.ac.uk)

[www.britishcouncil.org](http://www.britishcouncil.org)

[www.researchresearch.com](http://www.researchresearch.com)

[www.postgraduateresearch.com](http://www.postgraduateresearch.com)

[www.jobs.ac.uk](http://www.jobs.ac.uk)

## Funding from the UK government

If you are a UK student, you may be eligible for a Postgraduate Doctoral Loan and a range of scholarships.

[www.gov.uk/doctoral-loan](http://www.gov.uk/doctoral-loan)

The UK government offers some postgraduate scholarships for international students.

[www.gov.uk/postgraduate-scholarships-international-students](http://www.gov.uk/postgraduate-scholarships-international-students)

## Externally funded research opportunities

You could benefit from a funded PhD place, along with enhanced training and development, through our Doctoral Training Partnerships (DTPs) and Centres for Doctoral Training (CDTs).

[www.leeds.ac.uk/externallyfundedphds](http://www.leeds.ac.uk/externallyfundedphds)

---

# Take the next step.

Whether you're progressing in your studies, returning to education or changing direction, we'll help you get where you want to be.

Find a Masters course:  
[courses.leeds.ac.uk](https://courses.leeds.ac.uk)

Explore research opportunities:  
[phd.leeds.ac.uk](https://phd.leeds.ac.uk)



# Your Masters study

Specialist knowledge and skills, with a focus on your career. Explore what a Leeds Masters can offer you.

[www.leeds.ac.uk/masters](http://www.leeds.ac.uk/masters)



## Expertise and professional focus

Deepen your specialist knowledge and skills and become an expert. You'll gain transferable skills and can take advantage of opportunities and connections to enhance your career.

A Masters qualification can also be excellent preparation for research degree study.

## Choice and flexibility

We offer more than 200 Masters degrees, with over 100 of these available part time.

We have online-only courses and distance learning courses which include some face-to-face sessions.

Find out if your course has flexible study options at [courses.leeds.ac.uk](http://courses.leeds.ac.uk)

## About your course

Full-time courses normally last for nine or 12 months.

Depending on the course, you'll typically be assessed through written examinations, essays and projects, and coursework.

## Your qualification

On successfully completing your course, you'll be recognised as a Master of Arts (MA), Master of Science (MSc) or other knowledge area, or a Master of Research (MRes).

You can also choose to study a Postgraduate Diploma (PGDip) or Postgraduate Certificate (PGCert) qualification in some subjects.

# Masters subject areas and courses

## Accounting, Economics, Finance, International Business, Management and Marketing

Leeds University Business School is one of a small number of business schools worldwide to be triple-accredited by AACSB, AMBA and EQUIS. Our courses combine professional practice, up-to-date business knowledge and research expertise, preparing you for the competitive global job market. We're ranked top 10 in the UK for Business, Management and Marketing, and Accounting and Finance (The Times and Sunday Times Good University Guide 2022 and Guardian University Guide 2022), and top 10 in the UK for Business and Economics (Times Higher Education World University Rankings 2022).

- Accounting and Finance
- Advertising and Marketing
- Banking and International Finance
- Business Analytics and Decision Sciences
- Consumer Analytics and Marketing Strategy
- Corporate Communications, Marketing and Public Relations
- Data Analytics and Human Resource Management
- Digital Information Management and Systems Innovation
- Economics
- Economics and Finance
- Enterprise and Entrepreneurship
- Finance and Investment
- Financial Mathematics
- Financial Risk Management
- Global Strategy and Innovation Management
- Global Supply Chain Management
- Human Resource Management
- International Business
- International Marketing Management
- Management
- Management Consulting
- Master of Business Administration (MBA)
- Organizational Psychology and Business
- Sustainable Business Leadership (online)

Find out about the Masters courses you can study at [courses.leeds.ac.uk](http://courses.leeds.ac.uk)

## **Biological Sciences**

A world-leading destination for the study of biological sciences, we're ranked top 20 in the UK for biosciences (Guardian University Guide 2022). Our courses are at the forefront of knowledge, reflecting the latest developments in the field of biological sciences.

### **Biodiversity and Conservation**

---

### **Biodiversity and Conservation with African Field Course**

---

### **Biopharmaceutical Development**

---

### **Bioscience**

---

### **Biotechnology with Business Enterprise**

---

### **Drug Discovery and Development**

---

### **Global Conservation Science**

---

### **Infection, Immunity and Human Disease**

---

### **Neuroscience**

---

### **Plant Science and Biotechnology**

---

### **Precision Medicine: Genomics and Analytics**

---

## **Chemistry, Physics and Natural Sciences**

Experience our world-leading research and learn from academics at the cutting-edge of their field. Our courses will develop your specialist knowledge and research skills to prepare you for a career in both academia and industry.

### **Chemistry**

---

### **Physics**

---

## **Computing**

The School of Computing has a global reputation for its teaching and research, with over 1,500 students from over 55 countries studying with us. Our active research environment allows us to offer a range of exciting courses. Strong links with industry ensure our courses are current and match employers' needs.

### **Advanced Computer Science**

---

### **Advanced Computer Science (Artificial Intelligence)**

---

### **Advanced Computer Science (Cloud Computing)**

---

### **Advanced Computer Science (Data Analytics) Artificial Intelligence (online)**

---

### **Data Science and Analytics for Health**

---

### **High-Performance Graphics and Games Engineering**

---

## **Design**

We're ranked top 10 in the UK for art and design (Complete University Guide 2023). Our courses are designed to meet commercial, cultural and technological needs, now and in the future. Combining theory, practice and research, we aim to develop our students as 'added value' innovators who can use aesthetics and technology to generate creative concepts and products.

### **Advertising and Design**

---

### **Design**

---

### **Digital Design Futures**

---

### **Fashion, Enterprise and Society**

---

### **Global Fashion Management**

---

### **International Fashion Marketing and Design Management (online)**

---

### **Polymers, Colorants and Fine Chemicals**

---

### **Textile Sustainability and Innovation**

---

## **Education**

We're ranked top 10 in the UK for education (Times Higher Education World University Rankings 2022) and are 1st in the UK for childhood and youth studies (Complete University Guide 2023). Our courses are taught by an international team of leading academics who are experts in their fields.

### **Childhood Studies**

---

### **Deaf Education (with or without Teacher of the Deaf qualification)**

---

### **Digital Education**

---

### **Education**

---

### **TESOL**

---

### **TESOL (China)**

---

### **TESOL Studies**

---

Find out about the Masters courses you can study at [courses.leeds.ac.uk](https://courses.leeds.ac.uk)

## **Engineering**

Comprising four schools, we're one of the largest engineering groupings in the UK. We focus on interdisciplinary collaboration while delivering world-renowned research and teaching.

We're ranked top 100 in the world for chemical engineering in the QS World University Rankings by Subject 2022, 2nd in the UK for civil engineering in the Guardian University Guide 2022, and top 10 in the UK for electrical and electronic engineering and mechanical engineering in the Complete University Guide 2023.

**Advanced Chemical Engineering**

**Advanced Mechanical Engineering**

**Aerospace Engineering**

**Automotive Engineering**

**Communications and Signal Processing**

**Electrical Engineering  
and Renewable Energy Systems**

**Electronic and Electrical Engineering**

**Embedded Systems Engineering**

**Energy and Environment**

**Engineering Management (online)**

**Engineering Project Management**

**Engineering, Technology  
and Business Management**

**Environmental Engineering  
and Project Management**

**Geotechnical Engineering**

**International Construction Management  
and Engineering**

**Materials Science and Engineering**

**Mechatronics and Robotics**

**Medical Engineering**

**Railway Engineering with Project Management**

**Structural Engineering**

**Transport Infrastructure:  
Design and Construction**

**Water, Sanitation and Health Engineering**

## **English**

The School of English is a large, diverse and dynamic learning community with a wide range of research and subject areas. We're ranked 32nd in the world for English language and literature in the QS World University Rankings by Subject 2022.

**Creative Writing and Critical Life**

**English Literature**

**Postcolonial Literary and Cultural Studies**

## **Fine Art, History of Art and Cultural Studies**

The School of Fine Art, History of Art and Cultural Studies is ranked 8th for art and design in the UK (Complete University Guide 2023). It offers a unique combination of courses centred on the encounter between historical, cultural and theoretical analysis, museum and heritage studies, and fine art practice.

**Art Gallery and Museum Studies**

**Arts Management and Heritage Studies**

**Critical and Cultural Theory**

**Fine Art**

**Social History of Art**

## **Food Science and Nutrition**

We're ranked 2nd in the UK for agriculture, forestry and food (Guardian University Guide 2022). We are globally renowned for our teaching and research across the whole spectrum of food science, from the molecular level to how food affects our body and how our diet is influencing our health. You'll be taught by active researchers and visiting industry experts, preparing you for a career in one of the world's biggest industries.

**Food Quality and Innovation**

**Food Science**

**Food Science and Nutrition**

**Food Science (Food Biotechnology)**

**Nutrition**

## **Geography, Environment and Earth Sciences**

Our reputation for world-class research and innovative teaching shapes your studies and offers the opportunity to work alongside academics at the forefront of research on major global issues.

We're ranked 11th in the world for geography in ShanghaiRanking's Global Ranking of Academic Subjects 2021, 22nd in the world for geology and 26th in the world for geophysics in the QS World University Rankings by Subject 2022.

**Climate and Atmospheric Science**

**Climate Futures: Science, Society and Politics**

**Ecological Economics**

**Engineering Geology**

**Environment and Development**

**Exploration Geophysics**

**Geographical Information Science (online)**

**Geographical Information Systems**

**River Basin Management**

**Structural Geology with Geophysics**

**Sustainability and Business**

**Sustainability and Consultancy**

**Sustainable Cities**

**Sustainable Food Systems**

**Urban Data Science and Analytics**

Find out about the Masters courses you can study at [courses.leeds.ac.uk](https://courses.leeds.ac.uk)

## **History and Medieval Studies**

Ranked 11th in the UK for studying history (The Times and Sunday Times Good University Guide 2022), we have an international reputation for innovative research and teaching in medieval studies, medical histories, military history, the histories of south and east Asia, Africa and the Americas, as well as European, British and international history.

### **Medieval Studies**

### **Modern History**

### **Race and Resistance**

### **Social and Cultural History**

### **War and Strategy**

## **Languages, Cultures and Societies**

Our School is one of the UK's leading centres for research and teaching in the field of languages, cultures and societies, both ancient and modern, as well as linguistics, translation and film studies. We're ranked top 20 in the UK for modern languages and linguistics (Guardian University Guide 2022).

### **Applied Translation Studies**

### **Arabic/English Translation**

### **Audiovisual Translation and Localisation**

### **Business and Public Service**

### **Interpreting and Translation Studies**

### **Conference Interpreting and Translation Studies**

### **Film Studies**

## **Linguistics**

### **Linguistics and English Language Teaching**

### **Professional Language and Intercultural Studies**

## **Law and Criminology**

We're ranked top 10 in the UK for law and top 3 in the UK for criminology (The Times and Sunday Times Good University Guide 2022). You'll deepen and broaden your knowledge of important aspects of law and criminal justice and develop the analytical and critical reasoning skills so vital in modern employment.

### **Criminal Justice and Criminal Law**

### **Criminal Justice and Criminology**

### **Intellectual Property Law**

### **International Banking and Finance Law**

### **International Business Law**

### **International Corporate Law**

### **International Human Rights Law**

### **International Law and Global Governance**

### **International Trade Law**

### **Law (graduate programme)**

### **Law and Finance**

### **Law and Social Justice**

### **Security, Conflict and Justice**

## **Mathematics**

As one of the UK's largest mathematics departments, our expertise ranges from data science to fluid dynamics and financial statistics. This gives you the opportunity to specialise and focus on your future career. In the REF 2021, 98% of our research activity submitted was rated 'world leading' or 'internationally excellent'.

### **Data Science and Analytics**

### **Mathematics**

### **Statistics**

### **Statistics with Applications to Finance**

## **Media and Communication**

From political campaigns to popular culture and social networking, media and communication are at the centre of everyday life. We're ranked 6th in the UK for communication and media studies (Complete University Guide 2023), offering degrees which emphasise choice and skills development.

### **Communication and Media**

### **Film, Photography and Media**

### **International Communication**

### **International Journalism**

### **Media Industries**

### **New Media**

### **Political Communication**

### **Promotional Media**

## **Medicine, Dentistry, Healthcare and Psychology**

We have an internationally excellent reputation for the outstanding quality of our teaching and research. Our goal is to improve quality of life, not only for individuals but also for society. With courses in dentistry, healthcare, medicine and psychology, we'll help you make an impact, whatever your career.

### **Cancer Biology and Therapy**

### **Cardiac Device and Rhythm Management**

### **Cardiovascular Health and Disease**

### **Clinical Education**

### **Clinical Embryology (distance learning)**

### **Clinical Embryology and Assisted Reproduction Technology**

### **Cognitive Development and Disorders**

### **Dental Materials**

### **Dental Public Health**

### **Diagnostic Imaging**

### **Echocardiography**

### **Health Informatics with Data Science**

### **Health Research**

### **International Health**

### **Medical Imaging**

### **Medicine (MRes)**

### **Molecular Medicine**

### **Oral Surgery**

### **Paediatric Dentistry**

### **Psychological Approaches to Health**

### **Psychotherapy and Counselling**

### **Public Health (International)**

### **Systemic Family Therapy**

### **Systemic Practice**

Find out about the Masters courses you can study at [courses.leeds.ac.uk](https://courses.leeds.ac.uk)

## **Music, Theatre and Performance**

Music and performance provide the creative means to express emotions and engage the mind – on stage and in the wider world. Our degrees offer a multidisciplinary approach to your studies in order to develop the critical, creative and entrepreneurial skills needed in the cultural industries.

**Applied Psychology of Music**

**Applied Theatre and Intervention**

**Arts Fundraising and Philanthropy**

**Audiences, Engagement, Participation**

**Critical and Applied Musicology**

**Critical and Experimental Composition**

**Culture, Creativity and Entrepreneurship**

**Global Performance and Cultural Industries**

**Music and Management**

**Music and Wellbeing**

**Performance**

**Performance Design**

**Writing for Performance and Digital Media**

## **Nursing, Midwifery and Social Work**

Ranked top 50 in the world for nursing and midwifery and top 10 in the UK for nursing (QS World University Rankings by Subject 2022), the School of Healthcare has an internationally excellent reputation for the outstanding quality of its teaching and research. You'll be taught by healthcare experts who are embracing technologies and modern facilities to deliver solutions that make an impact in the real world, right now. This means your future career will benefit from the latest thinking, insights and techniques.

**Advanced Clinical Practice**

**Clinical Assessment**

**Pharmacy Practice**

**Psychotherapy and Counselling**

## **Philosophy, Religion and Applied Ethics**

We provide inspirational, innovative teaching and learning in philosophy, religion and the history of science. We're also home to the Inter-Disciplinary Ethics Applied Centre – a specialist unit for teaching, research, training and consultancy in applied ethics.

**Applied and Professional Ethics (online)**

**Biomedical and Healthcare Ethics**

**Global Ethical Challenges**

**Philosophy**

**Philosophy of Religion and Ethics (online)**

**Religion**

**Science, History and Society**

## **Sociology, Social Policy, Politics and International Studies**

The School of Politics and International Studies is ranked top 50 in the world for development studies (QS World University Rankings by Subject 2022) and brings together an international staff and student community. The School of Sociology and Social Policy is top 10 in the UK for both sociology and social policy (The Times and Sunday Times Good University Guide 2022), with research that informs and enriches your learning.

**Conflict, Development and Security**

**Gender Studies**

**Global Development**

**Global Development and Education**

**Global Governance and Diplomacy**

**Global Political Economy**

**Inequalities and Social Science**

**International Relations**

**Political Science**

**Security, Terrorism and Insurgency**

**Social and Political Thought**

**Social and Public Policy**

**Social Research**

**Society, Culture and Media**

## **Sport and Exercise Sciences**

We are ranked top 15 in the UK for Sport Science (Guardian University Guide 2022), meaning you will benefit from our specialist teaching knowledge. At postgraduate level, we offer experienced professionals a unique blended learning opportunity with practitioner-led training.

**Musculoskeletal Medicine**

**Sport and Exercise Medicine**

**Sport, Exercise and Rehabilitation**

## **Transport Studies**

We're 18th in the world for transportation science and technology in ShanghaiRanking's Global Ranking of Academic Subjects 2021. Our courses have been developed in partnership with industry, are guided by current research and provide excellent teaching. You'll develop specialist knowledge which will set you apart from your peers and help you on your career path.

**Railway Operations, Management and Policy**

**Sustainability in Transport**

**Transport Economics**

**Transport Planning**

**Transport Planning and Engineering**

**Transport Planning and the Environment**

Find out about the Masters courses you can study at [courses.leeds.ac.uk](https://courses.leeds.ac.uk)

# Your research degree

A large, vibrant research community and expert supervision. Explore what a research degree at Leeds could mean for you.

[www.leeds.ac.uk/pgr](http://www.leeds.ac.uk/pgr)



## Research degree study

Studying for a research degree is about pushing the boundaries of knowledge. You'll conduct your own supervised research and will need to be passionate about your subject.

You could work on an existing project (some offer funded studentships) or conduct your own independent research. It normally takes three to four years of full-time study.

We'll challenge you intellectually and push you to new levels. It's hard work but the rewards can be huge. On successful completion, you'll gain a doctorate, one of the highest degrees awarded by universities in the UK.

## Your supervisors

Finding the right supervisor(s) is a key part of choosing your research degree. They'll steer your progress, support and encourage you.

Our academics are engaged in leading research. Many have substantial experience in consultancy and provide advice to prominent national and international organisations.

## Flexibility

We offer a range of research degrees and different ways to study, including full-time, part-time and, in some cases, split-site study.

Find out more about the research degrees you can study with us at [www.leeds.ac.uk/pgr/researchdegree](http://www.leeds.ac.uk/pgr/researchdegree)

## Collaboration

Whatever your specialism, you'll have opportunities to work with others in the same area and across disciplines, through research groups, conferences and informal networks, both within the University and more widely.

The University is home to several interdisciplinary centres, which combine expertise from different disciplines to create fresh perspectives.

Read about our interdisciplinary environment at [www.leeds.ac.uk/research-environment](http://www.leeds.ac.uk/research-environment)



## Community

You'll join a diverse and welcoming research community. You'll be supported throughout your time at Leeds by your faculty graduate school and our Doctoral College.

Leeds Doctoral College connects our whole researcher community and puts you in touch with the services, guidance and opportunities you need.

[www.leeds.ac.uk/doctorscollege](http://www.leeds.ac.uk/doctorscollege)

Search research areas, supervisors and funding opportunities at [phd.leeds.ac.uk](http://phd.leeds.ac.uk)



# Applying for your Masters

## Step 1. Choose your course

Explore the courses we offer. Check application deadlines, academic and English language requirements, and all fees and costs at [courses.leeds.ac.uk](https://courses.leeds.ac.uk)

Check scholarship deadlines. Read more on pages 46–47.

Check visa requirements for UK study at [www.gov.uk/student-visa](https://www.gov.uk/student-visa)

## Step 2. Apply online

Have all your supporting documents scanned and ready to upload. Apply as early as possible, so you have time to apply for funding, accommodation and visas, if applicable.

Check what documents you need and apply online at [www.leeds.ac.uk/mastersapply](https://www.leeds.ac.uk/mastersapply)

## Step 3. Application processing

Your academic school will contact you if they need more information or want to invite you for interview.

Track your application's progress in the applicant portal at [application.leeds.ac.uk](https://application.leeds.ac.uk)

## Step 4. Get a decision

We will tell you our decision by email. If your application is successful, you can view your offer letter and accept your offer in the applicant portal at [application.leeds.ac.uk](https://application.leeds.ac.uk)

# Applying for your research degree

## Step 1. Explore research at Leeds

Explore our academics' research interests. Choose an existing research project or propose your own. Search research areas and potential supervisors at [phd.leeds.ac.uk](https://phd.leeds.ac.uk)

Check visa requirements for UK study at [www.gov.uk/student-visa](https://www.gov.uk/student-visa)

## Step 2. Check requirements for your research area

Check the faculty's webpages and contact the faculty graduate school. Find out about any deadlines and whether you need to submit a research proposal with your application.

[www.leeds.ac.uk/graduateschoolcontacts](https://www.leeds.ac.uk/graduateschoolcontacts)

## Step 3. Apply online

Have all your supporting documents scanned and ready to upload. Check what documents you need and apply online at

[www.leeds.ac.uk/pgr/apply](https://www.leeds.ac.uk/pgr/apply)

## Step 4. Find scholarships and sources of funding

Research your funding options at

[www.leeds.ac.uk/researchdegreesfunding](https://www.leeds.ac.uk/researchdegreesfunding)

## Step 5. Get a decision

We will acknowledge your application and let you know our decision by email.

Track your application's progress and, if successful, accept your offer at [acceptionline.leeds.ac.uk](https://acceptionline.leeds.ac.uk)

# International student applications

Check the qualifications and English language level you will need, and the visa and immigration requirements.



## Entry requirements

For Masters courses, check the entry requirements for the course you're interested in at [courses.leeds.ac.uk](https://www.leeds.ac.uk/courses)

For postgraduate research degrees, check entry requirements on the academic school's webpages or contact the faculty graduate school at [www.leeds.ac.uk/graduateschoolcontacts](https://www.leeds.ac.uk/graduateschoolcontacts)

We accept a range of international qualifications. Check the accepted qualifications and equivalent requirements from your country at [www.leeds.ac.uk/internationalqualifications](https://www.leeds.ac.uk/internationalqualifications)

## English language requirements

You will need a recognised English language qualification to study at the University of Leeds. We accept a range of qualifications, including IELTS Academic.

Read more about the qualifications we accept at [www.leeds.ac.uk/internationalentry](https://www.leeds.ac.uk/internationalentry)

English language requirements vary between courses. Check the requirements for your course or research degree at [courses.leeds.ac.uk](https://www.leeds.ac.uk/courses)

## English language courses

Improve your academic English before you start your studies with a course at the University's Language Centre. Our pre-sessional English courses can help you meet the English language requirements of your Masters or postgraduate research degree. You'll study on campus, with full access to University facilities, and can apply to stay in University accommodation.

As well as our on-campus pre-sessional courses, we also have online pre-sessional courses which you can study from anywhere in the world.

Find out more about our pre-sessional courses at [www.leeds.ac.uk/languagecentre](https://www.leeds.ac.uk/languagecentre)



## Visas and immigration requirements

If you're an international student, you'll need to hold an appropriate visa to study in the UK. Read the advice on our website at [www.leeds.ac.uk/studentvisa](https://www.leeds.ac.uk/studentvisa)

Part-time study is not usually available to international students who need a student visa to study in the UK. To discuss this, contact:

Masters study  
[study@leeds.ac.uk](mailto:study@leeds.ac.uk)

Postgraduate research degree  
[www.leeds.ac.uk/graduateschoolcontacts](https://www.leeds.ac.uk/graduateschoolcontacts)

Our team of immigration experts provides free advice on immigration law and requirements for current and prospective students, and their families. For advice on preparing your visa application correctly, contact [studentvisaadvice@leeds.ac.uk](mailto:studentvisaadvice@leeds.ac.uk)

# Notes



A series of horizontal dotted lines for taking notes.



## Alternative formats

If you require any of the information in this guide in an alternative format, eg Braille, large print or audio, email **[disability@leeds.ac.uk](mailto:disability@leeds.ac.uk)**

## Photo credits

Page 16, top right: Keo Theasrun, Documentation Center of Cambodia



**UNIVERSITY OF LEEDS**

Masters admissions  
**[www.leeds.ac.uk/masters](http://www.leeds.ac.uk/masters)**  
**[study@leeds.ac.uk](mailto:study@leeds.ac.uk)**

Research degree admissions  
**[www.leeds.ac.uk/pgr/apply](http://www.leeds.ac.uk/pgr/apply)**