

# Influencers and Attitudes: How will the next generation understand domestic abuse?

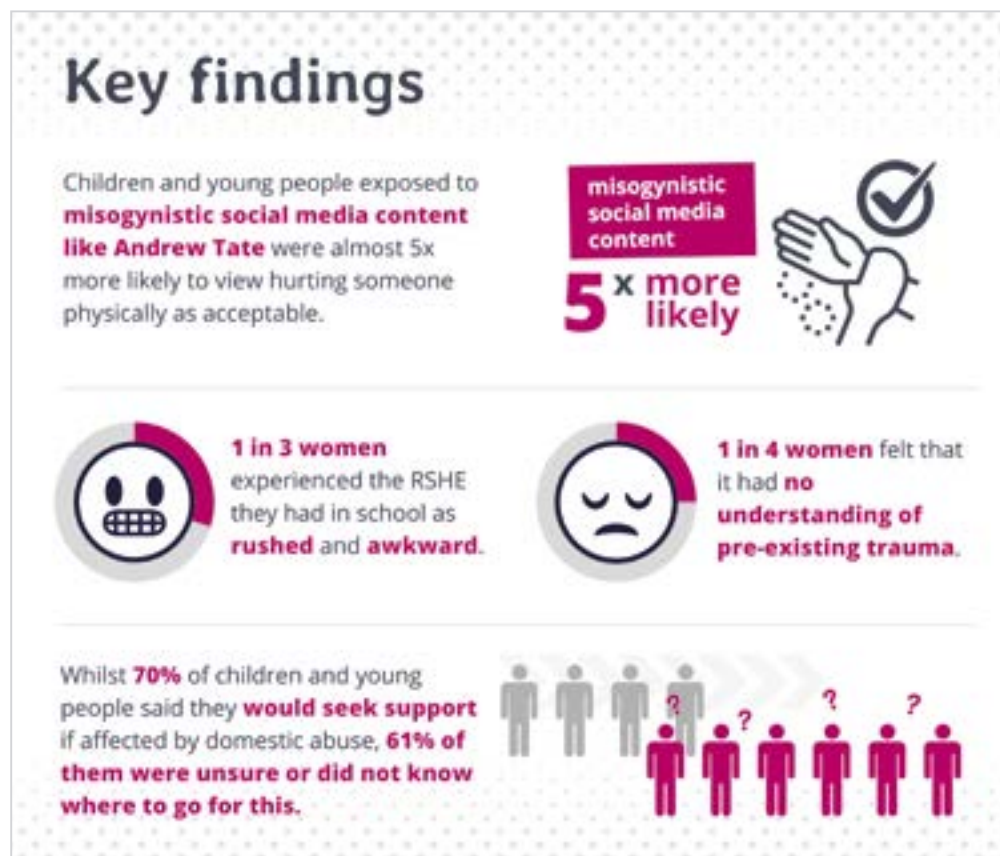
## Listening to children and young people to build a better future

### Attitudes Matter - why children and young people are key to tackling domestic abuse

Attitudes which enable and excuse domestic abuse to continue are still worryingly prevalent in the UK.

<sup>1</sup>As highlighted by our [‘Come Together’ campaign](#), challenging these attitudes is an essential part of achieving a world where domestic abuse is no longer tolerated. The knowledge and attitudes of children and young people are critical to this, as they will form the next generation of leaders, decision makers, employees, partners and parents.

Our research, based on two surveys with children and young people, provides insight into their views of gender roles, relationships and sex.<sup>2</sup> It has important implications for how society invests in preventing domestic abuse – such as through Relationships, Sex and Health Education (RSHE). At its best, RSHE can be a powerful mechanism to challenge the sexism which enables domestic abuse and to help build healthier relationships.<sup>3</sup>



### Find out more

- ▶ Join us at **10am on Thursday 2nd November** for a webinar hosted by Women's Aid to discuss the findings and implications of the report.
- ▶ To read the report and sign up to the webinar, please visit: [www.womensaid.org.uk/womens-aid-publishes-groundbreaking-research-looking-at-what-influences-children-and-young-peoples-understanding-of-domestic-abuse](http://www.womensaid.org.uk/womens-aid-publishes-groundbreaking-research-looking-at-what-influences-children-and-young-peoples-understanding-of-domestic-abuse)
- ▶ For further information about this report or to arrange a meeting, please contact: [researchandpolicy@womensaid.org.uk](mailto:researchandpolicy@womensaid.org.uk)

# Support and information from Women's Aid

If you have been affected by any of the issues or topics that this report mentioned and you would like to access further support, some links are included below.

## Expect Respect

Expect Respect is our schools delivery program working with teachers and students aged 4-18. We deliver training covering topics including gender stereotypes, domestic abuse, and healthy relationships as part of a whole school approach. If you'd like to find out more or book in an introductory session with our Children and Young People training team, contact [cyp@womensaid.org.uk](mailto:cyp@womensaid.org.uk)

## Love Respect

Love Respect is a dedicated Women's Aid website for young people in their first relationships, which gives information on what a healthy and an unhealthy relationship is, so children and young people can spot the signs.

► [loverespect.co.uk/](https://loverespect.co.uk/)



## Further support

If you're not sure if your relationship is healthy or you're worried about a friend or family member, we're here for help and support. You can talk to fully trained female support workers by email or Live Chat, connect with others with similar experiences on Survivors' Forum, or find resources in the Survivors' Handbook.

► [www.womensaid.org.uk/information-support/](https://www.womensaid.org.uk/information-support/)

## What needs to change?

- RSHE should be designed based on an understanding of gender inequality, with sensitivity to preexisting experiences and beliefs.
- RSHE should begin early and be holistic, following a 'whole school' approach.
- When developing policies for RSHE, schools must ensure that messaging is positive and promotes confidence and empowerment.
- Children and young people should be taught to think critically and influence their algorithm, and online platforms held accountable for preventing and tackling VAWG

**1** Women's Aid. (2022). *Come Together to End Domestic Abuse: A survey of UK attitudes to domestic abuse*. Available [online](#).

**2** Survey 1 received 1,000 responses from children and young people aged between 7-18, across Key Stages 2-5. Survey 2 received 1,000 responses from young adults aged 18-25 years. The samples for both surveys were drawn from nationally representative parameters based on gender and region.

**3** Goldfarb, E. and Lieberman, L. (2021). "Three Decades of Research: The Case for Comprehensive Sex Education." *Journal of Adolescent Health*, 68, 13-27.